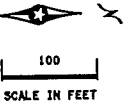


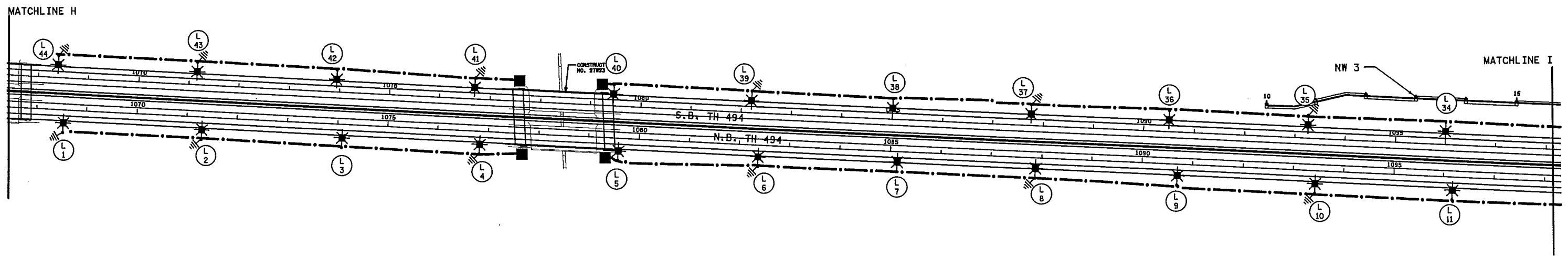
SEE LEGEND SHEET SL14



FEEDPOINT S01L

LIGHTING STANDARDS AND FOUNDATIONS					
NO.	STATION	LT.	RT.	LOCATION	TYPE
1	1068+55			T.H. 494 N.B.	9-49 LED
2	1071+30				9-49 LED
3	1074+10				9-49 LED
4	1076+85				9-49 LED
5	1079+60				9-49 LED
6	1082+40				9-49 LED
7	1085+15				9-49 LED
8	1087+90				9-49 LED
9	1090+70				9-49 LED
10	1093+45				9-49 LED
11	1096+20				9-49 LED
12	1099+00				9-49 LED
13	1101+75				9-49 LED
14	1104+50				9-49 LED
15	1107+30				9-49 LED
16	1110+05				9-49 LED
17	1112+80				9-49 LED
18	1115+55				9-49 LED
19	1118+30				9-49 LED
20	1121+10				9-49 LED
21	1123+85				9-49 LED
22	1126+65			T.H. 494 N.B.	9-49 LED
23	1126+15			T.H. 494 S.B.	9-49 LED
24	1123+40				9-49 LED
25	1120+80				9-49 LED
26	1118+05				9-49 LED
27	1115+30				9-49 LED
28	1112+55				9-49 LED
29	1109+85				9-49 LED
30	1107+10				9-49 LED
31	1104+30				9-49 LED
32	1101+55				9-49 LED
33	1098+80				9-49 LED
34	1096+00				9-49 LED
35	1093+25				9-49 LED
36	1090+50				9-49 LED
37	1087+75				9-49 LED
38	1085+00				9-49 LED
39	1082+20				9-49 LED
40	1079+45				9-49 LED
41	1076+70				9-49 LED
42	1073+95				9-49 LED
43	1071+15				9-49 LED
44	1068+40			T.H. 494 S.B.	9-49 LED

DISTRICT \*: METRO  
 IPLOT NAME: 12785-330.lit.lo.B  
 PATH & FILENAME: IP\_FWP.d1574914\2785-330.lit.lo.B.dgn  
 PLOTTED/REVISED: 12/15/2014



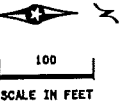
LIGHT SYSTEM "B"  
FEED POINT S1L

S.A.P. 027-030-039

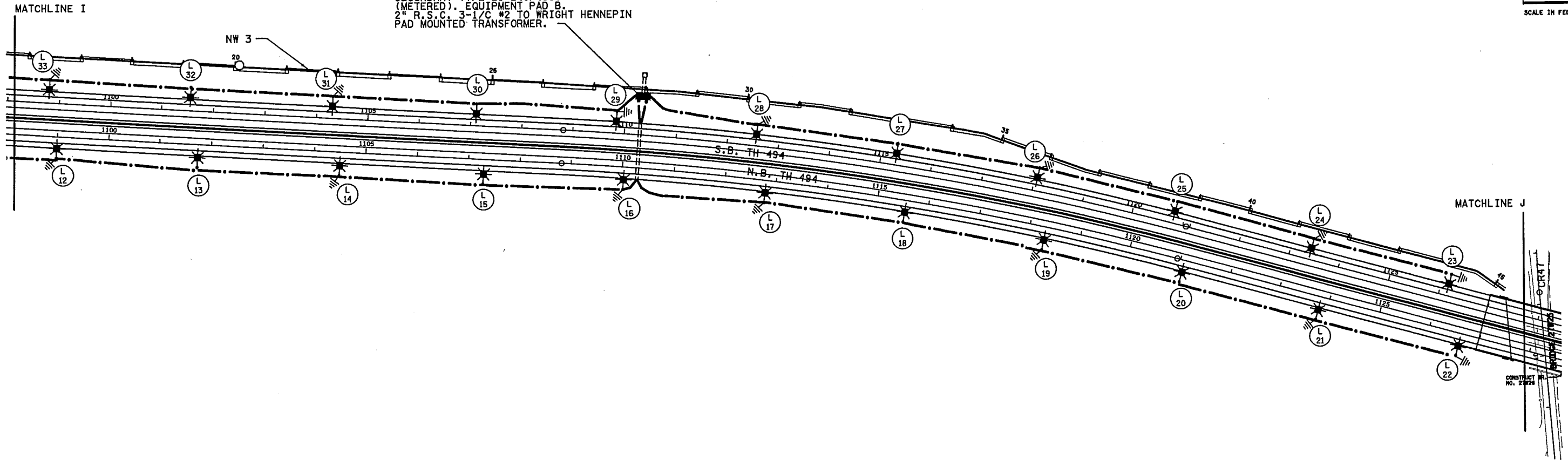
BY	DATE	REVISIONS	FEEDPOINT: S1L LOCATION: S. OF C.R.47	<b>LIGHTING PLAN</b>
			METER ADDRESS: TBD	
DRAWN BY: PB CKD BY: DATE: 9/2014			CERTIFIED BY: <i>Michael P. Sulimsky</i> LIC. NO. 19863 DATE: 12/15/2014	STATE PROJ. NO. 2785-330 (T.H. 494) SHEET NO. SL22 OF SL27 SHEETS

SEE LEGEND SHEET SL14

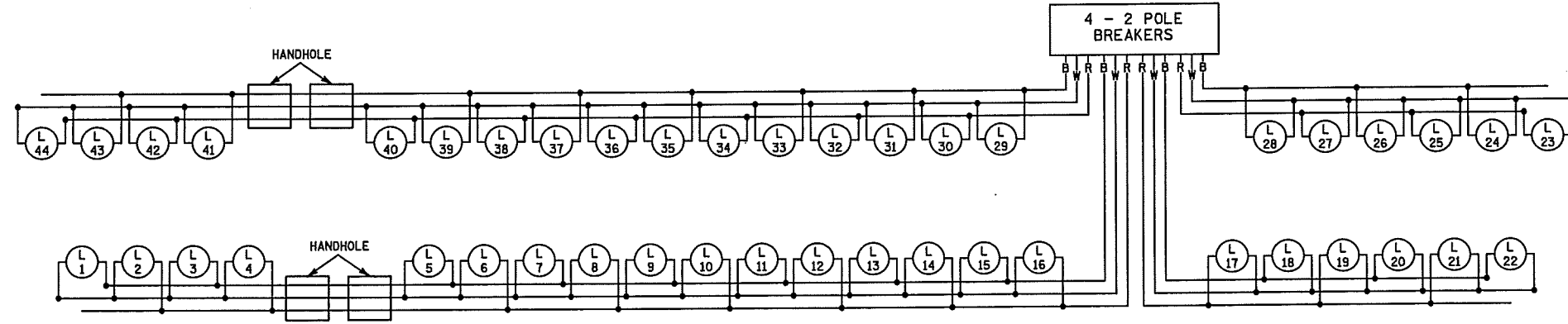
FD. PT. S1L  
 PAD MOUNTED SERVICE CABINET  
 SECONDARY TYPE LI 240/480V  
 (METERED). EQUIPMENT PAD B.  
 2" R.S.C. 3-1/C #2 TO WRIGHT HENNEPIN  
 PAD MOUNTED TRANSFORMER.



PLOTTED/REVISED: 12/15/2014



DASHED LINES DENOTE INPLACE ITEMS  
 W DENOTES NEUTRAL CONDUCTOR  
 B AND R DENOTE CURRENT CARRYING CONDUCTORS  
 FD. PT. S1L  
 240/480 VOLT



LIGHT SYSTEM "B"  
 FEED POINT S1L

S.A.P. 027-030-039

BY	DATE	REVISIONS

FEEDPOINT: S1L	LOCATION: S. OF C.R.47
METER ADDRESS:	
CERTIFIED BY <i>Michael P. Labinsky</i>	LIC. NO. 19863 DATE: 12/15/2014
LICENSED PROFESSIONAL ENGINEER	

<b>LIGHTING PLAN</b>
STATE PROJ.NO. 2785-330 (T.H. 494) SHEET NO. SL23 OF SL27 SHEETS

DISTRICT #: METRO  
 IPLOT NAME: 12785-330.lit.lo.B  
 PATH & FILENAME: IP\_FWP-d1574914N4ZT85-330.lit.lo.B.dgn

DRAWN BY: PB CKD BY: DATE: 9/2014