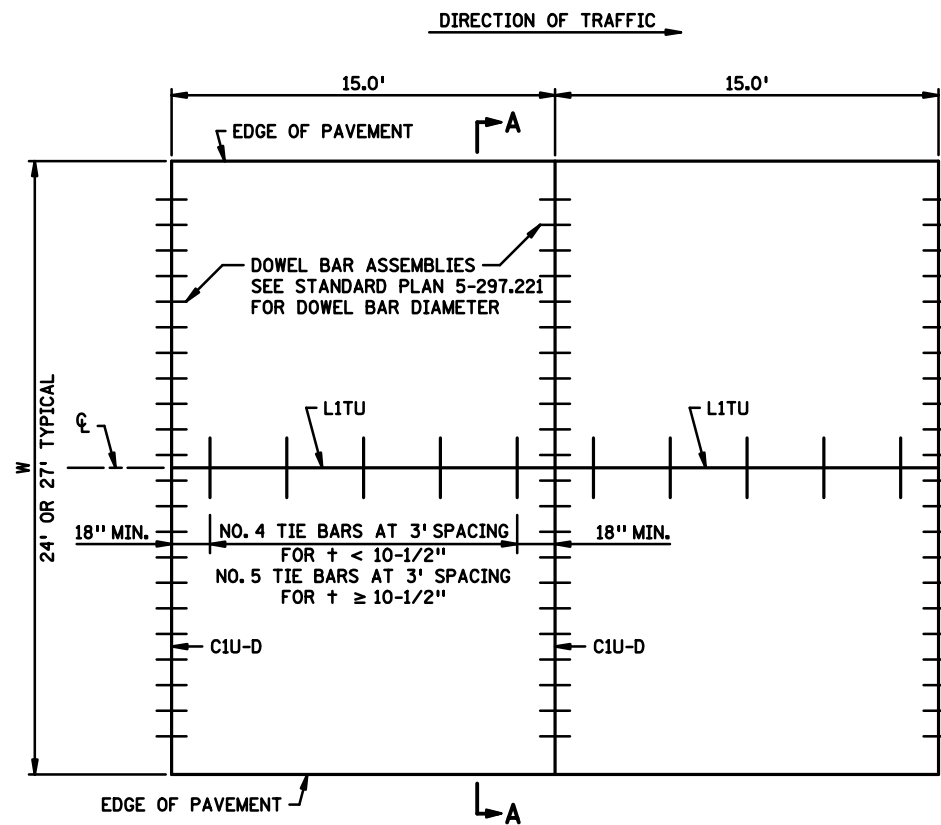
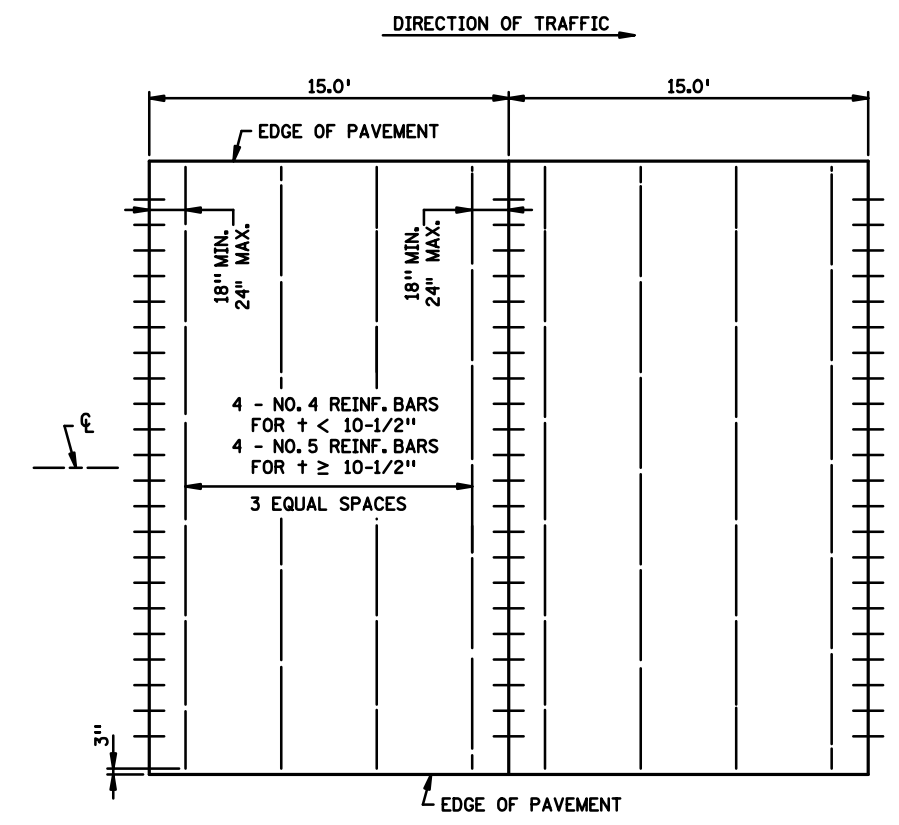


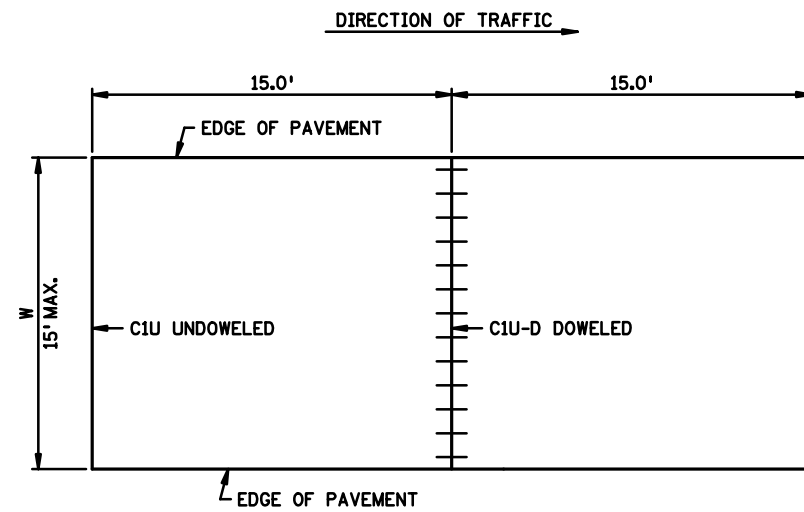
**MAINLINE PAVEMENT
UNDOWELED**



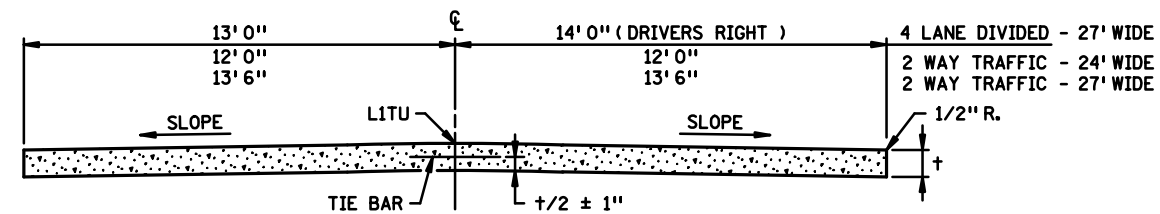
**MAINLINE PAVEMENT
DOWELED**



PANEL REINFORCEMENT



**PAVEMENT 2 FT. THRU 15 FT. WIDTH
UNDOWELED OR DOWELED**



SECTION A-A

GENERAL NOTES:

SEE TYPICAL SECTIONS AND PLAN SHEETS FOR CROSS SLOPES AND PAVEMENT THICKNESS, t .

DOWEL BAR ASSEMBLIES, WHEN REQUIRED, SHALL BE SIMILAR TO THOSE SHOWN ON STANDARD PLATE 1103.

ALL REINFORCING BARS SHALL BE EPOXY COATED AND COMPLY WITH SPEC 3301.

FOR SUPPLEMENTAL PAVEMENT REINFORCEMENT, SEE STANDARD PLATE 1070.

PANEL REINFORCEMENT:
PLACE IN PANELS WHERE PAVEMENT WIDTH EXCEEDS 15.0' WITHOUT A LONGITUDINAL JOINT. PLACEMENT DEPTH SHALL BE PLANNED $t/2 \pm 1"$. IT IS PREFERRED TO ADD A LONGITUDINAL JOINT RATHER THAN PAVE GREATER THAN 15' IN WIDTH.

LEAD EXPERT OFFICE

GLENN ENGSTROM
DIRECTOR
OFFICE OF MATERIALS
& ROAD RESEARCH



CONCRETE MAINLINE PAVEMENT
15.0 FT. PANEL LENGTH
RURAL

APPROVED: 02-16-2016
REVISED:

Thomas Styrbicki
THOMAS STYRBICKI
STATE DESIGN ENGINEER

STANDARD PLAN
5-297.217

1 OF 2

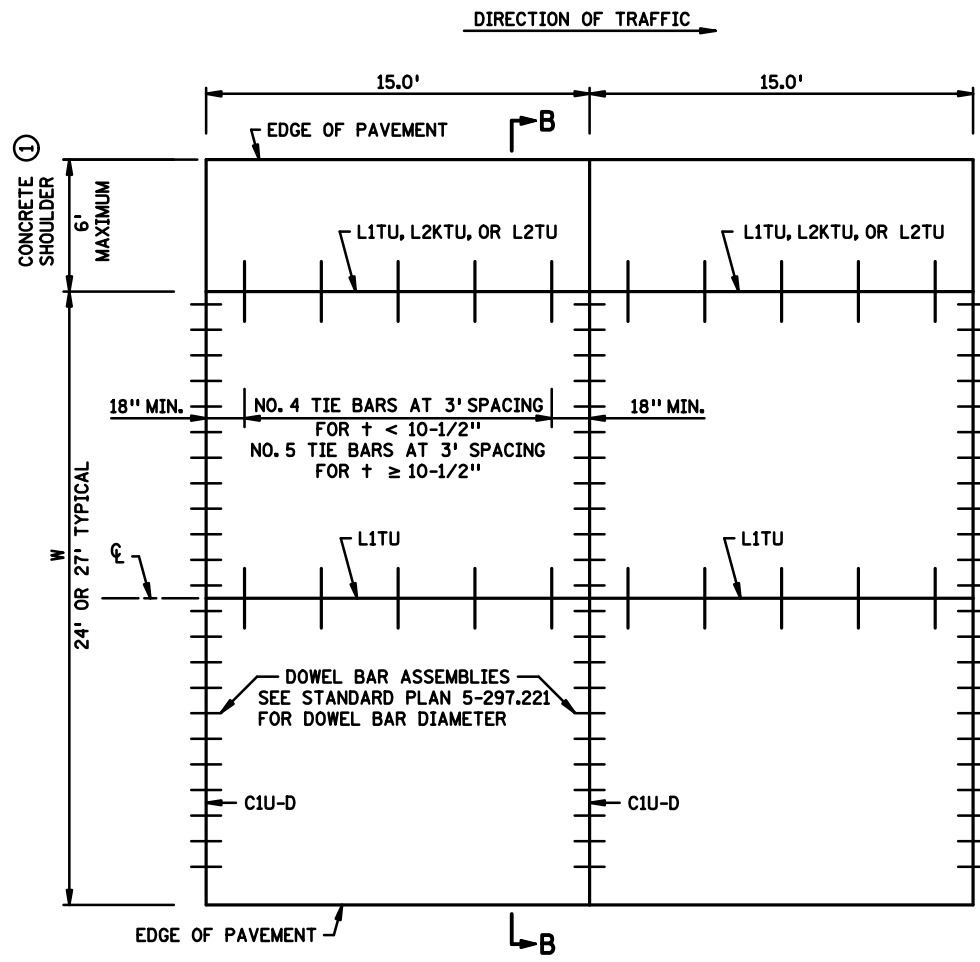
STANDARD PLAN

STATE PROJ. NO.

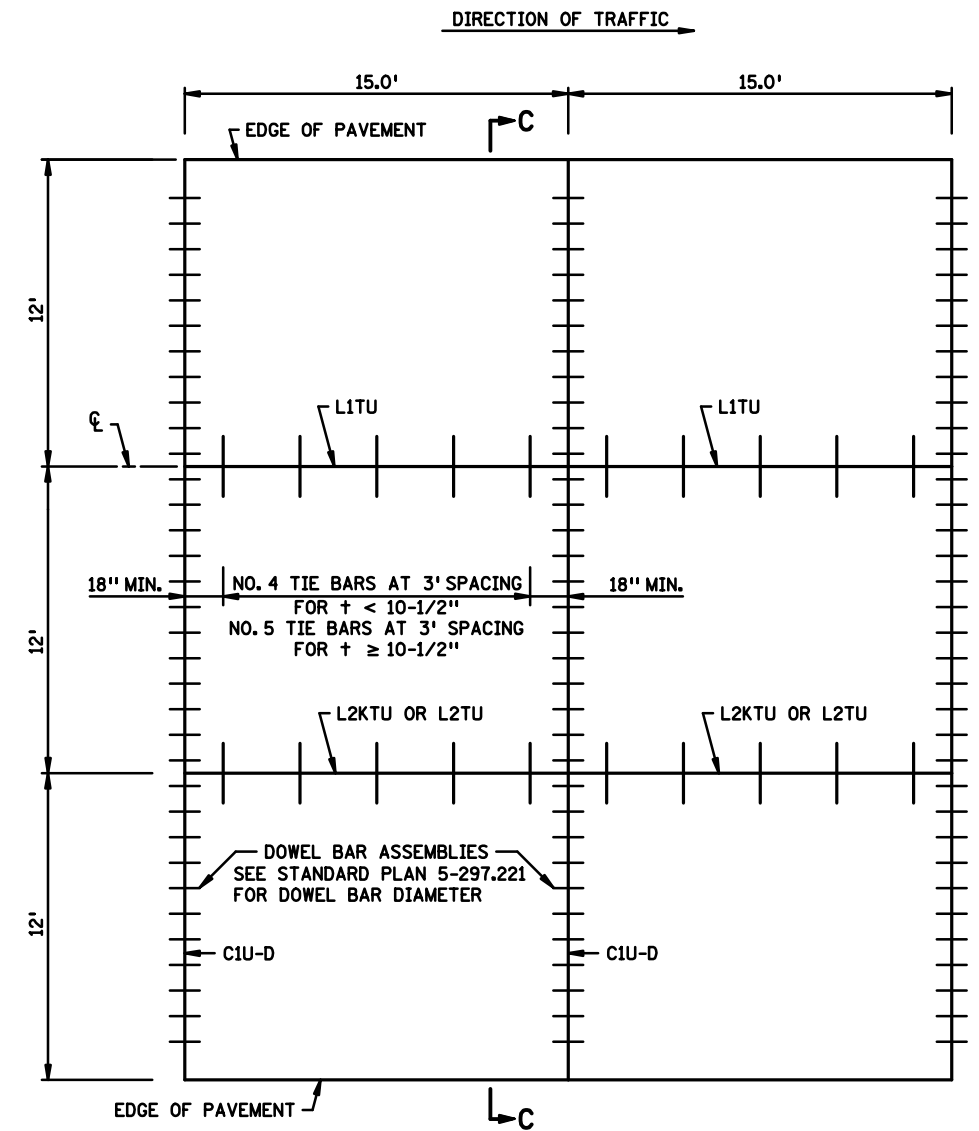
SHEET NO.

TRUNK HWY.

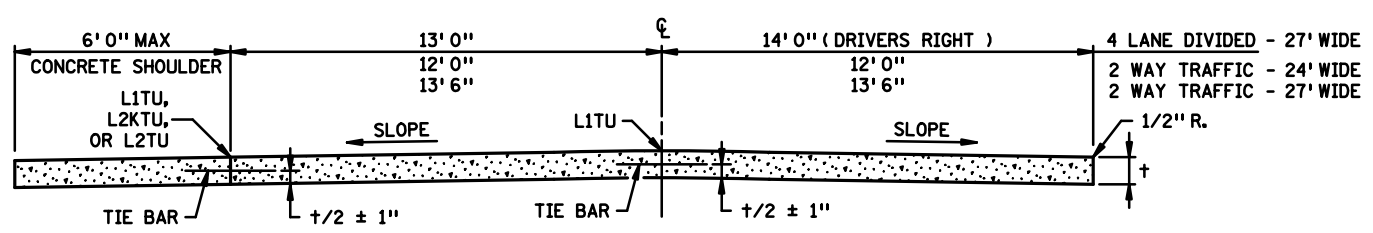
TOTAL SHEETS



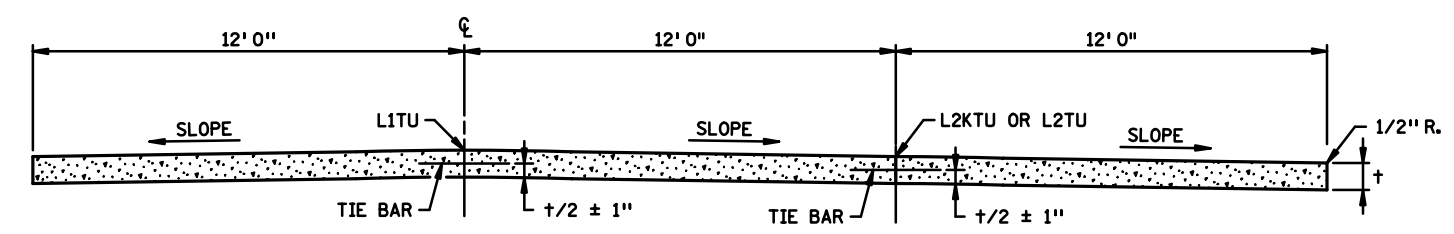
MAINLINE PAVEMENT WITH INSIDE CONCRETE SHOULDER
DOWELED



MAINLINE PAVEMENT URBAN
DOWELED



SECTION B-B



SECTION C-C

GENERAL NOTES:

SEE TYPICAL SECTIONS AND PLAN SHEETS FOR CROSS SLOPES AND PAVEMENT THICKNESS, t .
DOWEL BAR ASSEMBLIES, WHEN REQUIRED, SHALL BE SIMILAR TO THOSE SHOWN ON STANDARD PLATE 1103.
ALL REINFORCING BARS SHALL BE EPOXY COATED AND COMPLY WITH SPEC. 3301.
FOR SUPPLEMENTAL PAVEMENT REINFORCEMENT, SEE STANDARD PLATE 1070.

① CONTACT THE CONCRETE ENGINEER TO DISCUSS WHETHER TIE BARS AND SAWS JOINTS ARE NEEDED BASED ON CONCRETE SHOULDER WIDTH AND DEPTH.

LEAD EXPERT OFFICE
GLENN ENGSTROM
DIRECTOR
OFFICE OF MATERIALS & ROAD RESEARCH



CONCRETE MAINLINE PAVEMENT
15.0 FT. PANEL LENGTH
URBAN OR CONCRETE SHOULDERS

APPROVED: 02-16-2016
REVISED:

Thomas Styrbicki
THOMAS STYRBICKI
STATE DESIGN ENGINEER

STANDARD PLAN
5-297.217

2 OF 2

STANDARD PLAN

STATE PROJ. NO.
TRUNK HWY.

SHEET NO.
TOTAL SHEETS