

External ProjectWise Access

Overview

The ProjectWise Gateway Service is used to enable external ProjectWise Explorer clients (individuals located outside the company's firewall including consultants and MnDOT employees) to reach a ProjectWise Integration Server residing on the secure local network inside the MnDOT firewall.

Notes:

- Communication is through port 5800, so ensure that your firewall has this port open.
- For credentials to ProjectWise at MnDOT, contact your MnDOT project Manager.

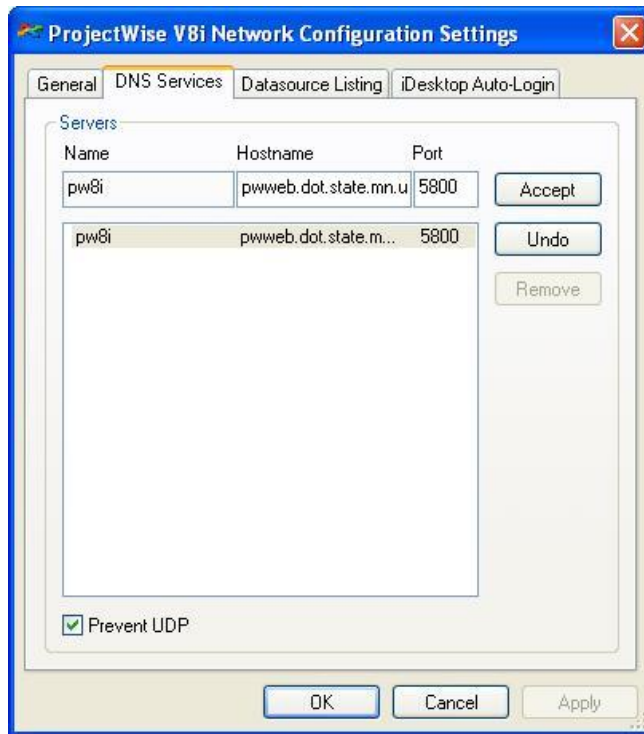
Licensing

ProjectWise licensing will be the responsibility of the consultants using the ProjectWise Gateway. If they already have a license for ProjectWise, it will be used. Otherwise, they can be purchased or leased by contacting Bentley. Please review this web site for licensing (passport subscription) <http://www.bentley.com/en-US/Subscriptions/Bentley%20Passport/>

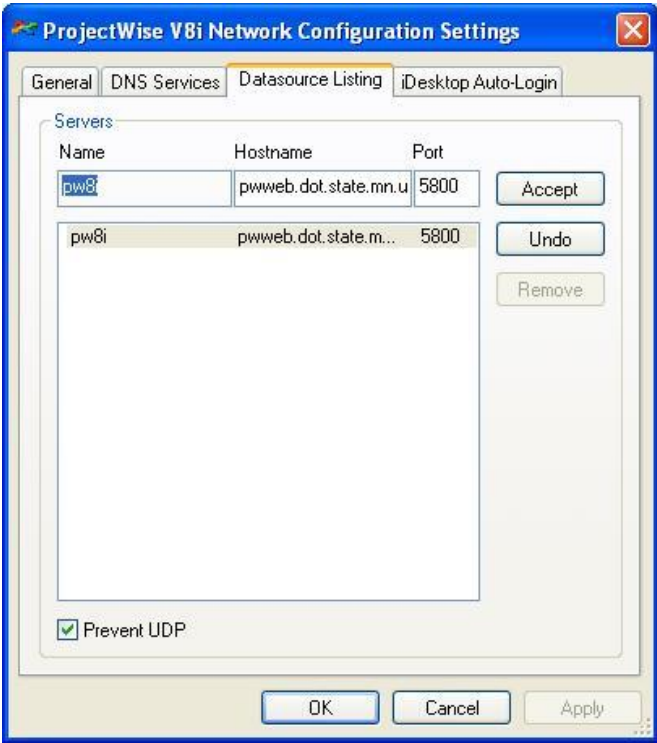
Setup

1. Install ProjectWise Explorer Select Series 3 or 4 (SS3 or SS4).
2. Open the Control Panel > ProjectWise V8i Network.
3. Click on the DNS Services Tab and set as shown here.
 - a. Name: Any name
 - b. Hostname: pwweb.dot.state.mn.us
 - c. Port: 5800

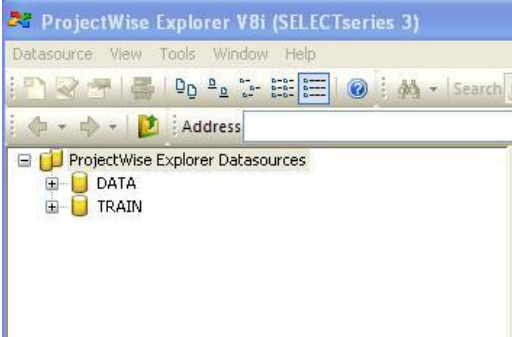
- d. Check "Prevent UDP".



4. Click Add.
5. Click the Datasource Listing tab and repeat steps 3 & 4.



- 6. Click OK.
- 7. Launch ProjectWise Explorer and you should see the two MnDOT datasources.

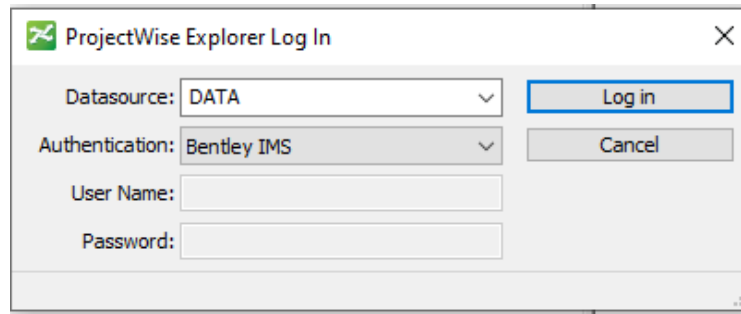


- 8. Consultants will login to the "DATA" datasource using their Bentley IMS credentials (must be logged into Bentley Connection Client and have a valid PW Explorer License) and should be able to click the plus next to "DATA" to do this (Single Sign On).

If single sign on does not work,

- a. right click on "DATA"
- b. Select "Login as..."
- c. For Datasource: Select "DATA" (if not already populated)
- d. For Authentication: Select "Bentley IMS"

e. Click “Log In”



The image shows a dialog box titled "ProjectWise Explorer Log In" with a close button (X) in the top right corner. The dialog contains the following fields and buttons:

- Datasource:** A dropdown menu with "DATA" selected.
- Authentication:** A dropdown menu with "Bentley IMS" selected.
- User Name:** An empty text input field.
- Password:** An empty text input field.
- Log in:** A button with a blue border, highlighted by a mouse cursor.
- Cancel:** A button to the right of the "Log in" button.