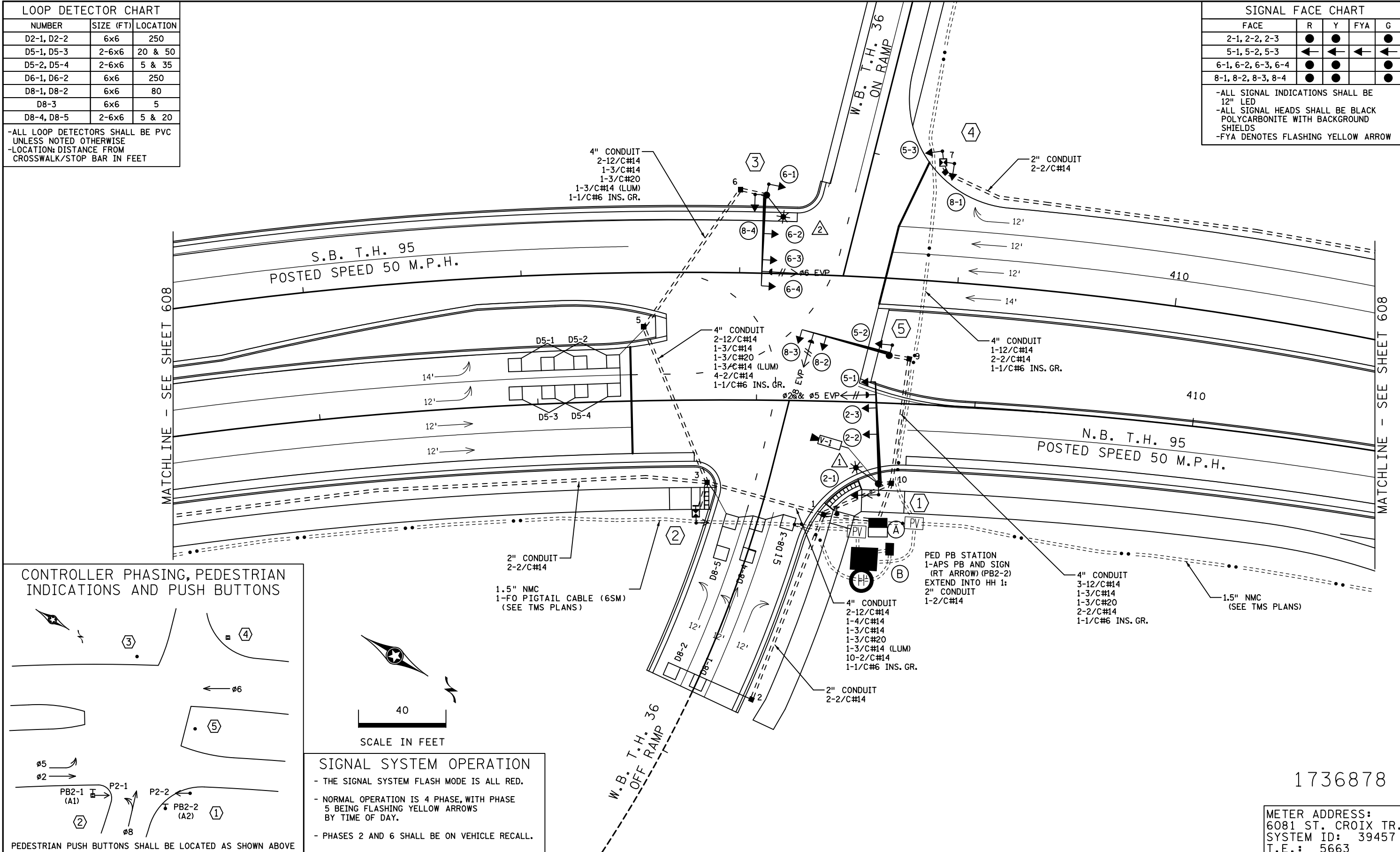


LOOP DETECTOR CHART		
NUMBER	SIZE (FT)	LOCATION
D2-1, D2-2	6x6	250
D5-1, D5-3	2-6x6	20 & 50
D5-2, D5-4	2-6x6	5 & 35
D6-1, D6-2	6x6	250
D8-1, D8-2	6x6	80
D8-3	6x6	5
D8-4, D8-5	2-6x6	5 & 20

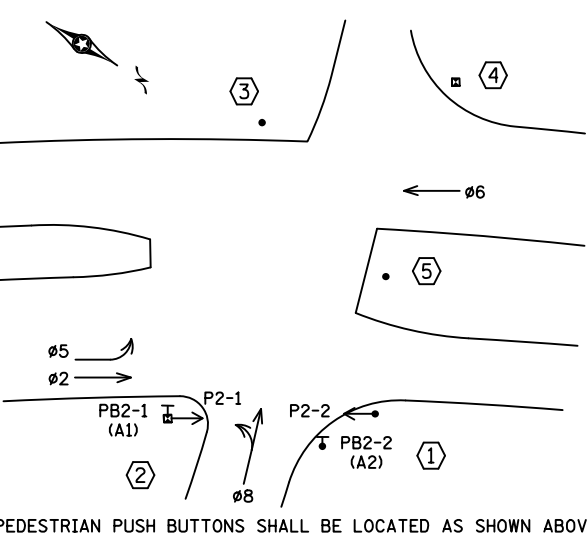
-ALL LOOP DETECTORS SHALL BE PVC UNLESS NOTED OTHERWISE
-LOCATION: DISTANCE FROM CROSSWALK/STOP BAR IN FEET

SIGNAL FACE CHART				
FACE	R	Y	FYA	G
2-1, 2-2, 2-3	●	●		●
5-1, 5-2, 5-3	←	←	←	←
6-1, 6-2, 6-3, 6-4	●	●		●
8-1, 8-2, 8-3, 8-4	●	●		●

-ALL SIGNAL INDICATIONS SHALL BE 12" LED
-ALL SIGNAL HEADS SHALL BE BLACK POLYCARBONITE WITH BACKGROUND SHIELDS
-FYA DENOTES FLASHING YELLOW ARROW



CONTROLLER PHASING, PEDESTRIAN INDICATIONS AND PUSH BUTTONS



SIGNAL SYSTEM OPERATION

- THE SIGNAL SYSTEM FLASH MODE IS ALL RED.
- NORMAL OPERATION IS 4 PHASE, WITH PHASE 5 BEING FLASHING YELLOW ARROWS BY TIME OF DAY.
- PHASES 2 AND 6 SHALL BE ON VEHICLE RECALL.

RECORD DRAWING NOTE

THESE RECORD DRAWINGS WERE DEVELOPED BASED ON THE PREVIOUS DRAWING REVISIONS AND INFORMATION TRANSMITTED FROM THE FIELD BY OTHERS. THE INFORMATION CONTAINED WITHIN THIS RECORD AS-BUILT PLAN REPRESENTS THE ACTUAL CONDITIONS FOR ALL CHANGES OF WHICH ALLIANT IS AWARE. FUTURE USERS OF THESE DRAWINGS SHOULD VERIFY AS-BUILT CONDITIONS IN THE FIELD IN ALL CIRCUMSTANCES.

1736878

METER ADDRESS:
6081 ST. CROIX TR.
SYSTEM ID: 39457
T.E.: 5663

DATE
BY

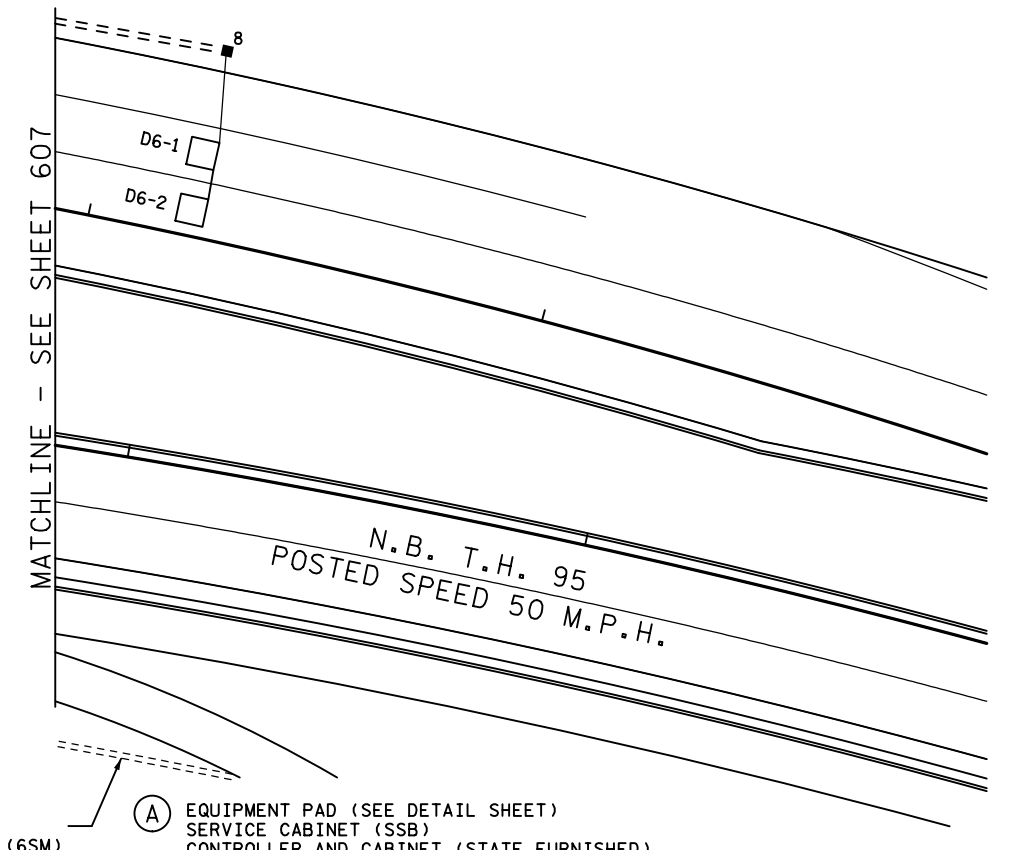
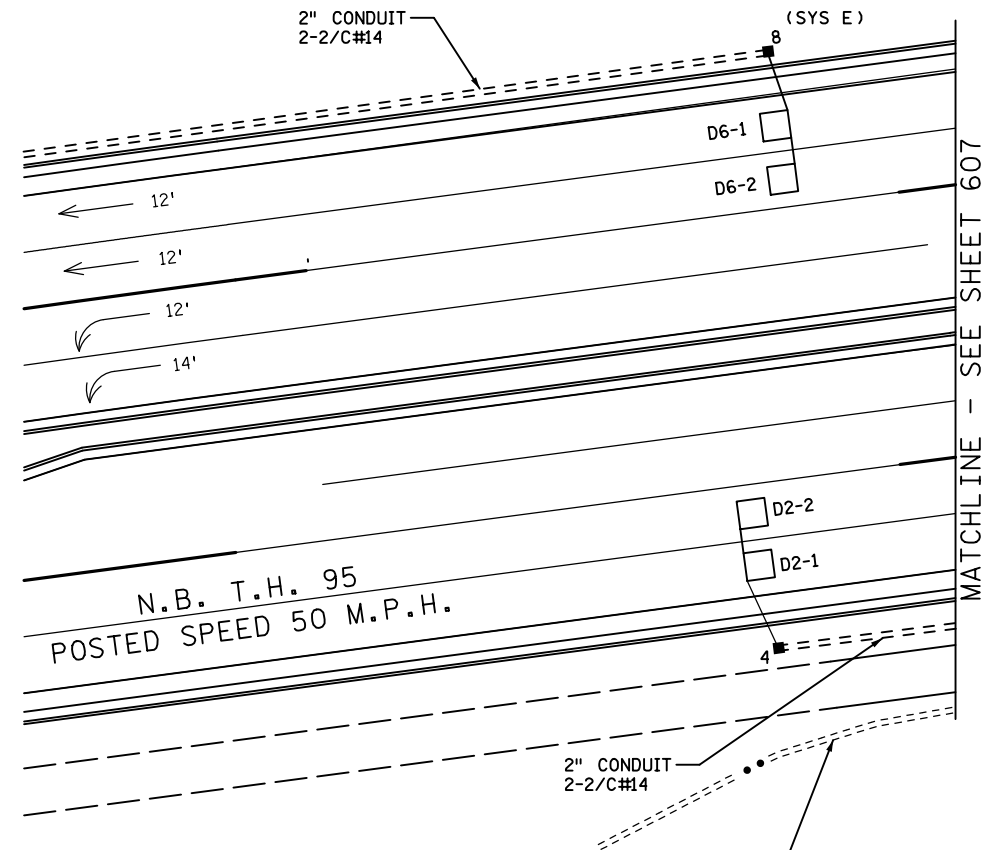
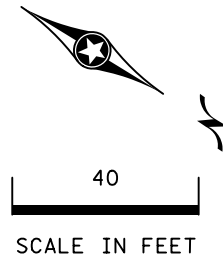
NO	DATE	BY	CKD	APPR	REVISION
0	06/20/13	KAS	BJG	JWD	EARLY RELEASE - DP T-2
1	08/08/13	KAS	BJG	KAS	INITIAL RELEASE FOR CONSTRUCTION - DP T-2
2	03/22/16	MPM	TJJ	JWD	RECORD PLAN
3	12/7/18	JBA			BY MNDOT: ADDED TAMS SYSTEM ID#, SPEED LIMIT TO 50, TO OPERATIONS PLAN
4	12/18/18	JBA			BY MNDOT: REMOVED "SOUTH JCT" IN TITLE BLOCK

DRAWING NO.: SGL110



ST. CROIX MN APPROACHES (S.P. 8214-114) SHEET 607 OF 628

SIGNAL SYSTEM G
INTERSECTION LAYOUT
T.H. 36 AT T.H. 95 NORTH RAMP



- ① X=510361.8451
Y=206113.8777
PA100 POLE FOUNDATION
TYPE PA100-A45-X6-350/CAM 400
1-VIDEO CAMERA WITH MOUNT
(STATE FURNISHED)
1-ANGLE MOUNT SIGNAL OVERHEAD AT 0'
2-STRAIGHT MOUNT SIGNAL OVERHEAD
AT 12' AND 24'
1-ANGLE MOUNT SIGNAL AT 180 DEG
1-ANGLE MOUNT C. D. PED IND
AT 180 DEG
1-ONE WAY EVP DETECTOR AND
CONFIRMATORY LIGHT (PHASES 2 & 5)
LUMINAIRE-250W LED
1-R10-X12 SIGN ADJACENT TO HEAD (5-1)
2-TYPE D SIGN (D-24 & D-28) (SEE SIGN DETAILS)
3" CONDUIT TO HH 10:
2-12/C#14
1-4/C#14
1-3/C#14
1-3/C#20
1-3/C#14 (LUM)
1-3/C#14 (CAM POWER)
1-1/C#6 INS. GR.
1-COM CABLE
1-COAXIAL CABLE

- ② X=510361.4816
Y=206114.4709
PEDESTAL FOUNDATION
13' PEDESTAL POLE AND BASE
1-ANGLE MOUNT C.D. PED IND AT 90 DEG
1-APS PB AND SIGN (LT ARROW) AT 90 DEG (PB2-1)
3" CONDUIT TO HH 3:
1-4/C#14
1-2/C#14
1-1/C#6 INS. GR.

- ③ X=510220.7725
Y=206065.4282
PA90 POLE FOUNDATION
TYPE PA90-A-40-D40-9 (DAVIT AT 350 DEG)
1-ANGLE MOUNT SIGNAL OVERHEAD AT 0'
2-STRAIGHT MOUNT SIGNALS OVERHEAD
AT 12' AND 24'
2-ANGLE MOUNT SIGNALS AT 90 AND 180 DEG
1-ONE WAY EVP DETECTOR AND
CONFIRMATORY LIGHT (PHASE 6)
LUMINAIRE-250W LED
2-TYPE D SIGN (D-25 & D-26) (SEE SIGN DETAILS)
3" CONDUIT TO HH 6:
2-12/C#14
1-3/C#14
1-3/C#20
1-3/C#14 (LUM)
1-1/C#6 INS. GR.

- ④ X=510165.8123
Y=206126.5880
PEDESTAL FOUNDATION
13' PEDESTAL POLE AND BASE
2-ANGLE MOUNT SIGNALS AT 90 & 180 DEG
3" CONDUIT TO HH 7:
1-12/C#14
1-1/C#6 INS. GR.

- ⑤ X=510254.0162
Y=206151.6189
PA90 POLE FOUNDATION
TYPE PA90-A-40
1-ANGLE MOUNT SIGNAL OVERHEAD AT 0'
1-STRAIGHT MOUNT SIGNAL OVERHEAD
AT 12'
1-ANGLE MOUNT SIGNAL AT 90
1-ONE WAY EVP DETECTOR AND
CONFIRMATORY LIGHT (PHASE 8)
1-TYPE D SIGN (D-20) (SEE SIGN DETAILS)
3" CONDUIT TO HH 9:
2-12/C#14
1-3/C#14
1-3/C#20
1-1/C#6 INS. GR.

- ⑥ SOP-GROUND MOUNTED
TRANSFORMER (XCEL ENERGY)
2" CONDUIT INTO SERVICE CABINET:
3-1/C#2

1.5" NMC
1-FO PIGTAIL CABLE (6SM)
(SEE TMS PLANS)

⑦ EQUIPMENT PAD (SEE DETAIL SHEET)
SERVICE CABINET (SSB)
CONTROLLER AND CABINET (STATE FURNISHED)
4" CONDUIT TO HH 1:
2-12/C#14
1-4/C#14
1-3/C#14
1-3/C#20
13-2/C#14
1-1/C#6 INS. GR.

4" CONDUIT TO HH 10:
5-12/C#14
1-6/C#14
1-4/C#14
2-3/C#14
2-3/C#20
2-2/C#14
1-1/C#6 INS. GR.
1-COM CABLE
1-COAXIAL CABLE

2-2" AND 1-3" CONDUIT STUBBED OUT (CAPPED BOTH ENDS)
1-1/2" CONDUIT TO PULL VAULT:
1-FO PIGTAIL (6-SM)
1-1/2" CONDUIT TO SIGNAL SYSTEM F:
1-FO PIGTAIL (6-SM)
CONTROLLER CABINET TO SERVICE CABINET:
2" CONDUIT
2-1/C#6
1-1/C#6 INS. GR.
CONTROLLER CABINET TO SERVICE CABINET (COMMS):
2" CONDUIT
1-6PR#19
SERVICE CABINET TO GROUND MOUNTED TRANSFORMER:
2" CONDUIT
3-1/C#2
SERVICE CABINET TO HH 1:
2" CONDUIT
2-3/C#14 (LUM)
1-3/C#14 (CAM POWER)
HH 1 TO HH 10:
2" CONDUIT
1-3/C#14 (LUM)
1-3/C#14 (CAM POWER)

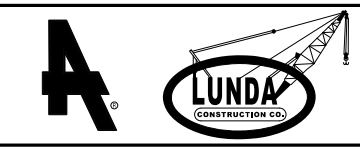
1736878

METER ADDRESS:
6081 ST. CROIX TR.
SYSTEM ID: 39457
T.E.: 5663

NO	DATE	BY	CHK	APPR	REVISION
0	06/20/13	KAS	RJG	JWD	EARLY RELEASE - DP T-2
1	08/08/13	KS	RJG	KAS	INITIAL RELEASE FOR CONSTRUCTION - DP T-2
2	03/22/16	NSM	TJJ	JWD	RECORD PLAN
3	12/7/18	JBA			BY MNDOT: ADDED TAMS SYSTEM ID*, SPEED LIMIT TO 50, TO OPERATIONS PLAN
4	12/18/18	JBA			BY MNDOT: REMOVED "SOUTH JCT" IN TITLE BLOCK

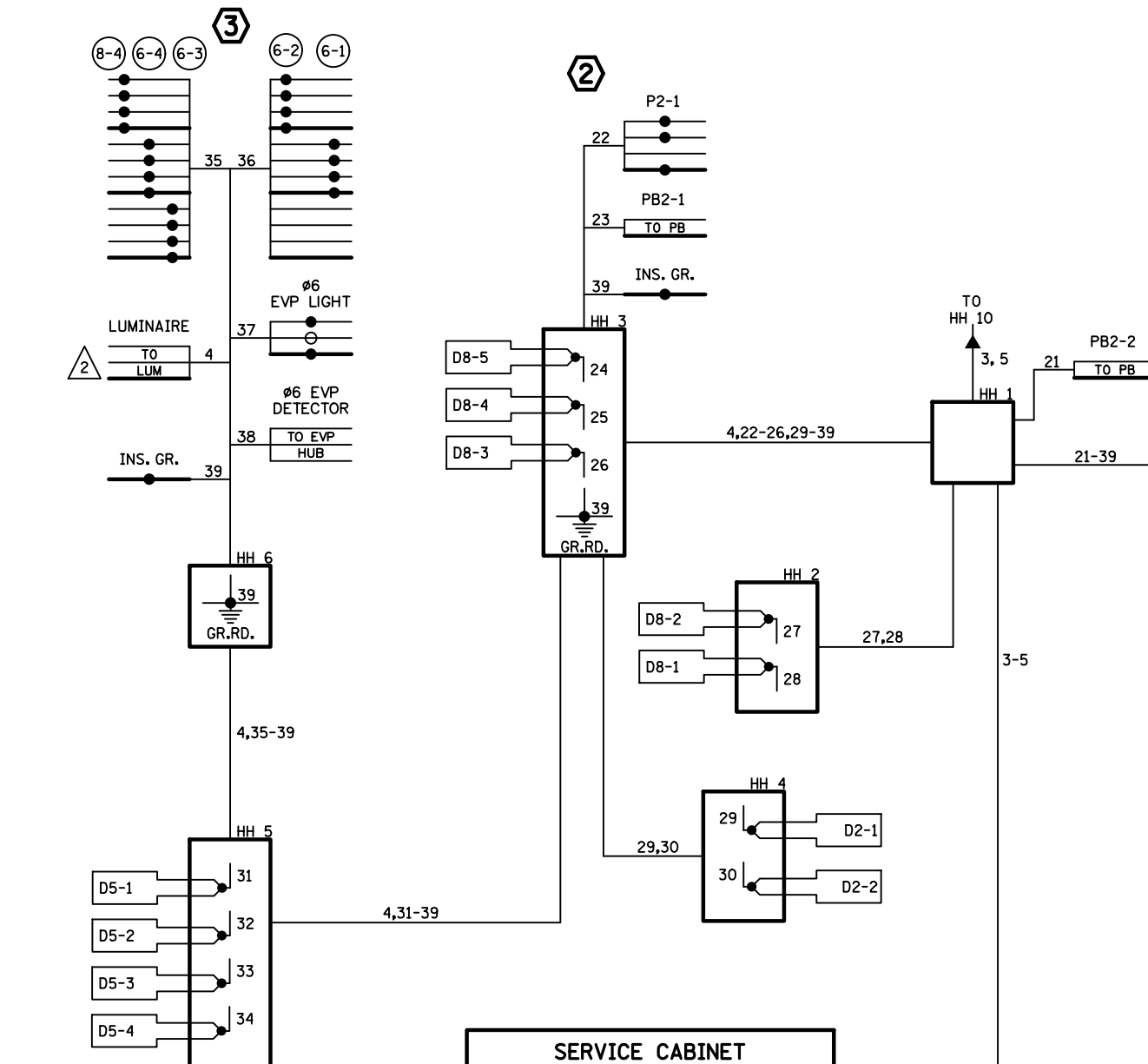
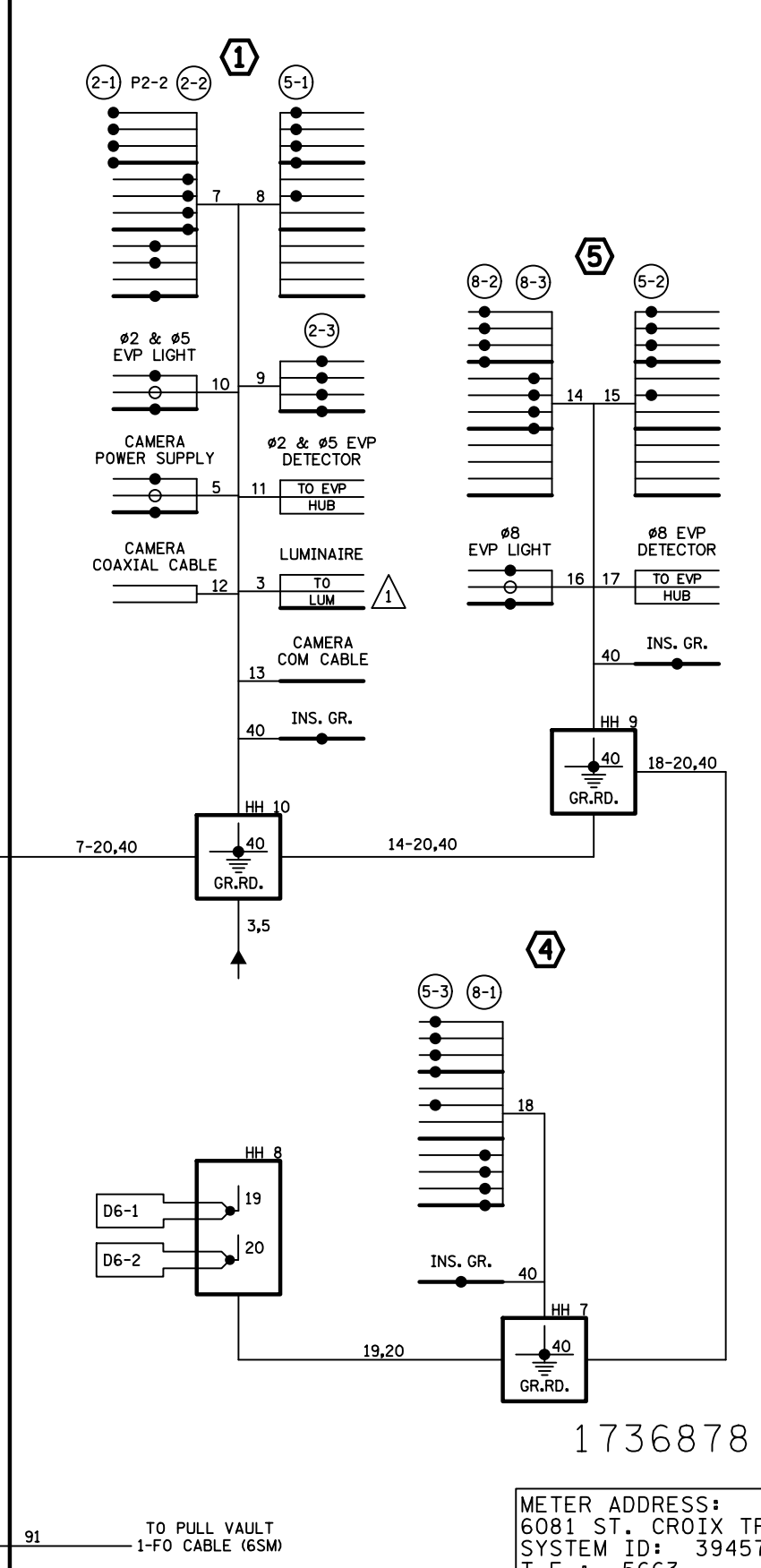
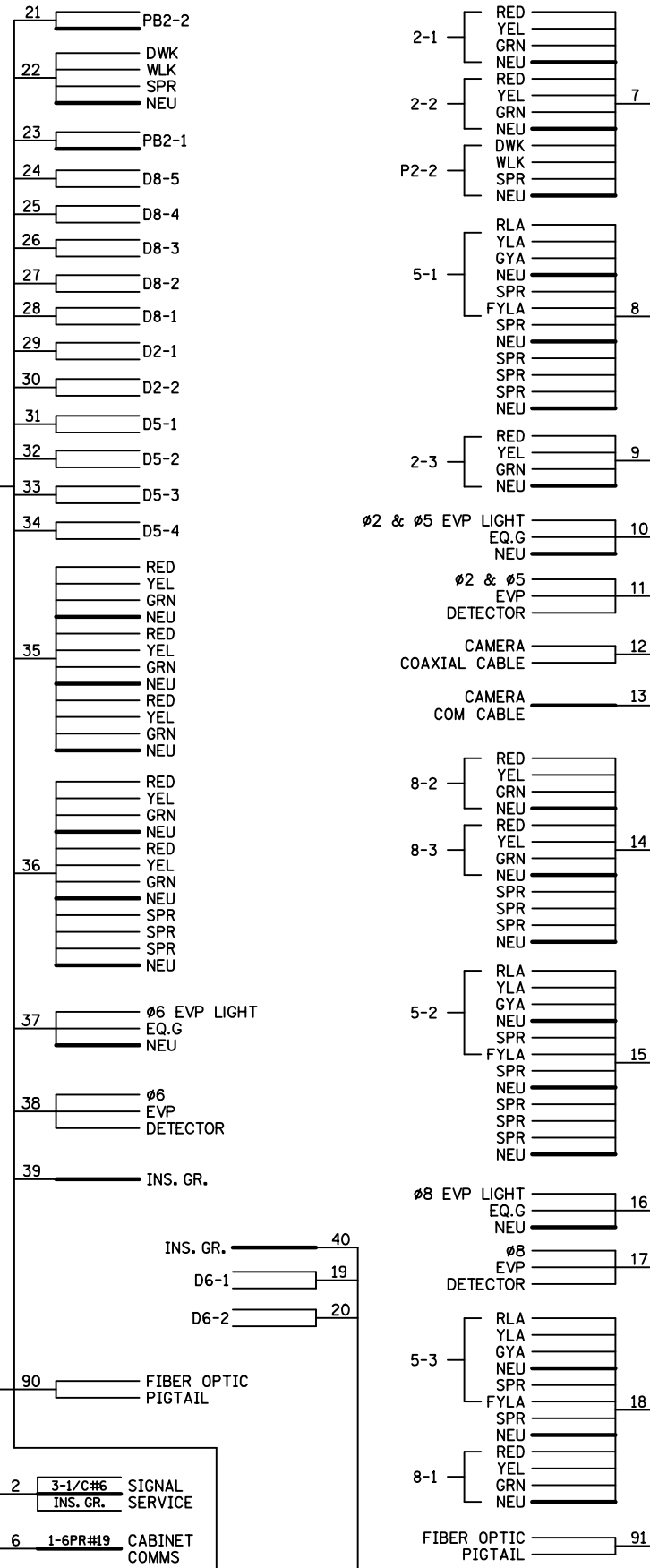
DRAWING NO.: SGL111

RECORD DRAWING NOTE
THESE RECORD DRAWINGS WERE DEVELOPED BASED ON THE PREVIOUS DRAWING REVISIONS AND INFORMATION TRANSMITTED FROM THE FIELD BY OTHERS. THE INFORMATION CONTAINED WITHIN THIS RECORD AS-BUILT PLAN REPRESENTS THE ACTUAL CONDITIONS FOR ALL CHANGES OF WHICH ALLIANT IS AWARE. FUTURE USERS OF THESE DRAWINGS SHOULD VERIFY AS-BUILT CONDITIONS IN THE FIELD IN ALL CIRCUMSTANCES.



ST. CROIX MN APPROACHES (S.P. 8214-114) SHEET 608
SIGNAL SYSTEM G OF 628
MATCHLINE LAYOUT AND POLE NOTES
T.H. 36 AT T.H. 95 NORTH RAMP

CONTROLLER CABINET

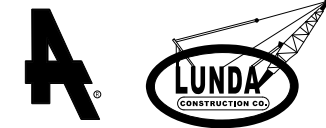


NOTES:

- LUMINAIRES ARE UNMETERED.
- SIGNAL SYSTEM INCLUDES BATTERY-BACKUP SERVICE CABINET (NO BATTERIES OR U.P.S.).
- FOR CONDUCTOR COLOR CODE SEE TRAFFIC SIGNAL POLE WIRING CONNECTOR DETAIL.

RECORD DRAWING NOTE

THESE RECORD DRAWINGS WERE DEVELOPED BASED ON THE PREVIOUS DRAWING REVISIONS AND INFORMATION TRANSMITTED FROM THE FIELD BY OTHERS. THE INFORMATION CONTAINED WITHIN THIS RECORD AS-BUILT PLAN REPRESENTS THE ACTUAL CONDITIONS FOR ALL CHANGES OF WHICH ALLIANT IS AWARE. FUTURE USERS OF THESE DRAWINGS SHOULD VERIFY AS-BUILT CONDITIONS IN THE FIELD IN ALL CIRCUMSTANCES.



ST. CROIX MN APPROACHES (S.P. 8214-114) SHEET 609 OF 628

SIGNAL SYSTEM G
FIELD WIRING DIAGRAM
T.H. 36 AT T.H. 95 NORTH RAMP

METER ADDRESS:
6081 ST. CROIX TR.
SYSTEM ID: 39457
T.E.: 5663

DATE: 08/08/13
BY: KS
CHKD: RJK
APPD: KAS
REVISION: INITIAL RELEASE FOR CONSTRUCTION - DP T-2

NO	DATE	BY	CHKD	APPD	REVISION
0	08/08/13	KS	RJK	KAS	INITIAL RELEASE FOR CONSTRUCTION - DP T-2
1	03/22/16	NSM	TJJ	JWD	RECORD PLAN
2	12/7/18	JBA			BY MNDOT: ADDED TAMS SYSTEM ID*, TO OPERATIONS PLAN
3	12/18/18	JBA			BY MNDOT: REMOVED "SOUTH JCT" IN TITLE BLOCK

DRAWING NO.: SGL112