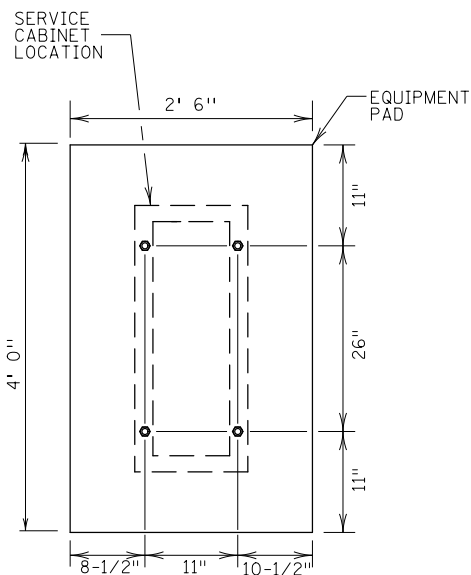
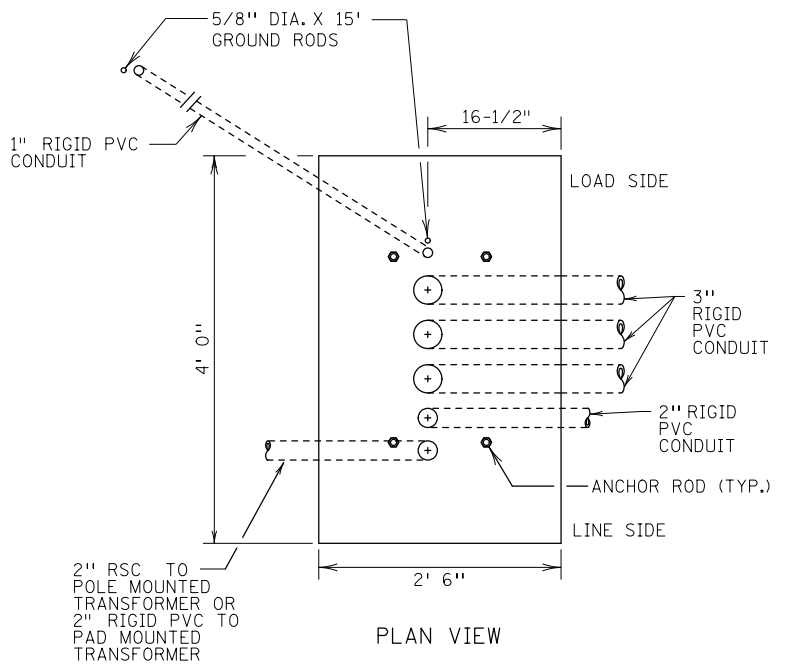


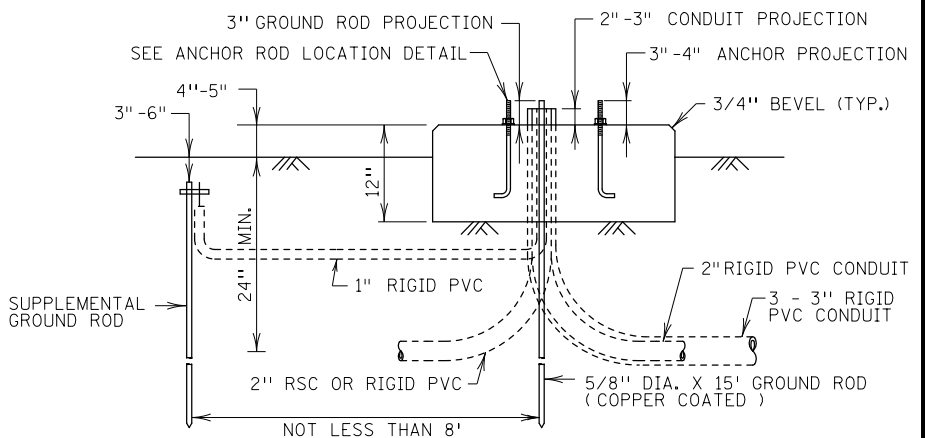
**ANCHOR ROD DETAIL**  
(SPEC. 3385 TYPE A)



**ANCHOR ROD LOCATION DETAIL**



**PLAN VIEW**



**SIDE VIEW**

**CAST-IN-PLACE EQUIPMENT PAD B**

**NOTES:**

CONTRACTOR SHALL HAVE THE OPTION OF PRECAST OR CAST-IN-PLACE EQUIPMENT PAD.

CONCRETE SHALL BE MIX 3F52.

TOP OF PAD SHALL HAVE A BRUSH TOP FINISH.

PLACE THREE (3) 3 IN. RIGID PVC CONDUIT WITH 90° ELBOWS ON THE LOAD SIDE OF THE EQUIPMENT PAD.

PLACE ONE (1) 2 IN. RIGID PVC CONDUIT WITH 90° ELBOW ON THE LOAD SIDE OF THE EQUIPMENT PAD FOR FUTURE USE ONLY. USE PVC CONDUIT CAPS OR PLUGS TO SEAL THE OPEN ENDS OF THE CONDUIT

END BELL FITTINGS ON CONDUIT ENDS SHALL BE INCLUDED PER SPEC. 2565.3D.

PLACE FOUR (4) GALVANIZED "L" SHAPED CONCRETE EMBEDDED TYPE ANCHOR RODS AS SHOWN IN THE ANCHOR ROD DETAIL. PLACE ANCHOR RODS AS SHOWN ON THE ANCHOR ROD LOCATION DETAIL. USE A RIGID STEEL TEMPLATE TO HOLD ANCHOR RODS IN PLACE UNTIL CONCRETE HAS CURED.

PLACE A 5/8" DIA. X 15' GROUND ROD ELECTRODE IN THE LOAD SIDE OF THE EQUIPMENT PAD AND PROJECT 3" +/- 1/4". PLACE A SUPPLEMENTAL 5/8" DIA. X 15' GROUND ROD ELECTRODE OUTSIDE OF THE EQUIPMENT PAD WITH THE TOP OF THE ELECTRODE BURIED 3" TO 6" BELOW THE GROUND LINE (7" TO 8" IF LOCATED UNDER BITUMINOUS OR CONCRETE SURFACES) AND NOT LESS THEN 8' FROM THE GROUND ROD ELECTRODE IN THE PAD.

APPLY DE-OX COMPOUND TO THE GROUNDING CONNECTIONS AFTER FINAL ASSEMBLY.

APPLY ANTI -SEIZE COMPOUND THAT MEETS MIL-PRF-907E SPEC. WITH A BRUSH TO ALL ANCHOR ROD THREADS.

APPROVED JULY 15, 2015

*Christy M. Ry*  
STATE DESIGN ENGINEER

STATE OF MINNESOTA  
DEPARTMENT OF TRANSPORTATION

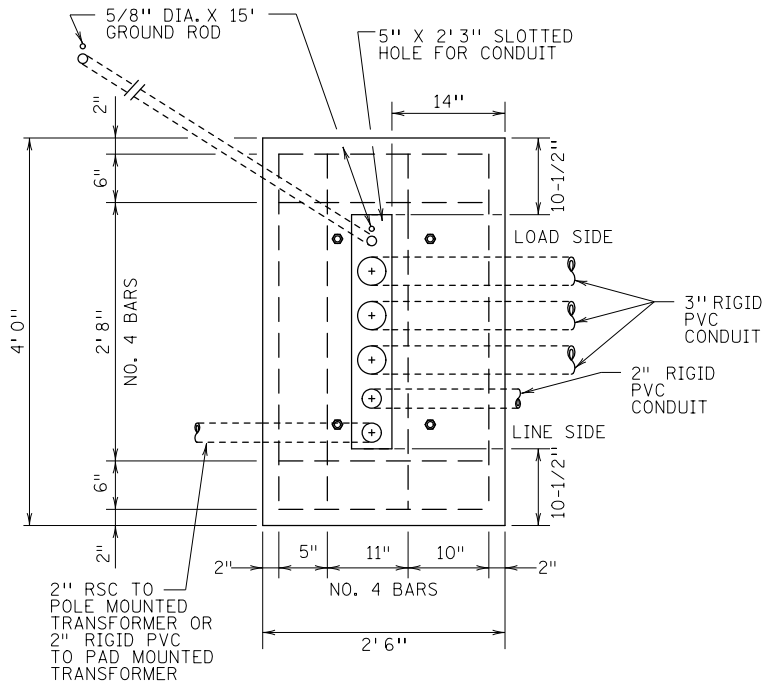
**EQUIPMENT PAD B**

SPECIFICATION  
REFERENCE  
2461, 2545  
2550, 2565

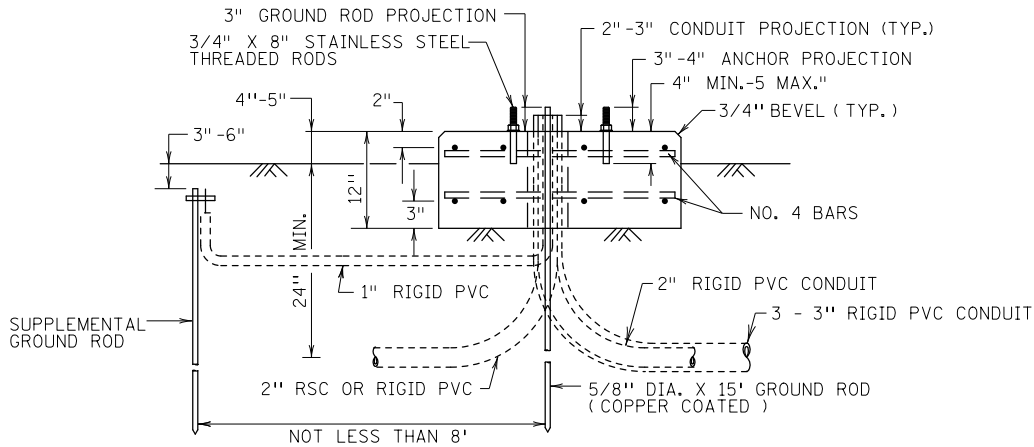
STANDARD  
PLATE  
NO.

**8106D**

1 OF 3



PLAN VIEW



SIDE VIEW  
PRECAST EQUIPMENT PAD B

**NOTES:**

- CONTRACTOR SHALL HAVE THE OPTION OF PRECAST OR CAST-IN-PLACE EQUIPMENT PAD.
- CONCRETE SHALL BE MIX 3F52.
- TOP OF PAD SHALL HAVE A BRUSH TOP FINISH.
- SEE ANCHOR ROD LOCATION DETAIL ON SHEET 1 OF 3 FOR BOLT LOCATION.
- PLACE THREE (3) 3 IN. RIGID PVC CONDUIT WITH 90° ELBOWS ON THE LOAD SIDE OF THE EQUIPMENT PAD.
- PLACE ONE (1) 2 IN. RIGID PVC CONDUIT WITH 90° ELBOW ON THE LOAD SIDE OF THE EQUIPMENT PAD FOR FUTURE USE ONLY. USE PVC CONDUIT CAPS OR PLUGS TO SEAL THE OPEN ENDS OF THE CONDUIT
- END BELL FITTINGS ON CONDUIT ENDS SHALL BE INCLUDED PER SPEC. 2565.3D.
- FILL AREA AROUND RIGID PVC CONDUIT AND GROUND ROD AS APPROVED BY THE ENGINEER.
- PLACE A 5/8" DIA. X 15' GROUND ROD ELECTRODE IN THE LOAD SIDE OF THE EQUIPMENT PAD AND PROJECT 3" +/- 1/4". PLACE A SUPPLEMENTAL 5/8" DIA. X 15' GROUND ROD ELECTRODE OUTSIDE OF THE EQUIPMENT PAD WITH THE TOP OF THE ELECTRODE BURIED 3" TO 6" BELOW THE GROUND LINE (7" TO 8" IF UNDER BITUMINOUS OR CONCRETE SURFACES) AND NOT LESS THAN 8' FROM THE GROUND ROD ELECTRODE IN THE PAD

- APPLY DE-OX COMPOUND TO THE GROUNDING CONNECTIONS AFTER FINAL ASSEMBLY.
- REINFORCEMENT SHALL BE NO. 4. BAR. EACH PAD SHALL CONTAIN: EIGHT (8) 3'-8" LENGTH BARS AND EIGHT (8) 2'-2" LENGTH BARS AS SHOWN.
- ANCHOR RODS SHALL BE CHAMFERED AND SHALL BE IN ACCORDANCE WITH 3385.2D. RODS SHALL BE ANCHORED USING AN EPOXY ADHESIVE INTO 7/8" DIA. DRILLED HOLE 4" - 5" IN DEPTH PER MANUFACTURE'S INSTRUCTIONS. MECHANICAL ANCHOR BOLTS OR CONCRETE WEDGE ANCHORS SHALL NOT BE USED. USE AN APPROVED EPOXY ADHESIVE FOR APS PUSH BUTTON BASE ADHESIVE ANCHOR SYSTEMS FROM MnDOT'S APPROVED/QUALIFIED PRODUCTS LIST. PLACE ANCHORS AS SHOWN ON THE ANCHOR ROD LOCATION DETAIL. USE NUT AND WASHER PROVIDED WITH THE SERVICE CABINET.
- APPLY ANTI-SEIZE COMPOUND THAT MEETS MIL-PRF-907E SPEC. WITH A BRUSH TO ALL ANCHOR ROD THREADS.

APPROVED JULY 15, 2015

*Christy M. Ry*  
STATE DESIGN ENGINEER

STATE OF MINNESOTA  
DEPARTMENT OF TRANSPORTATION

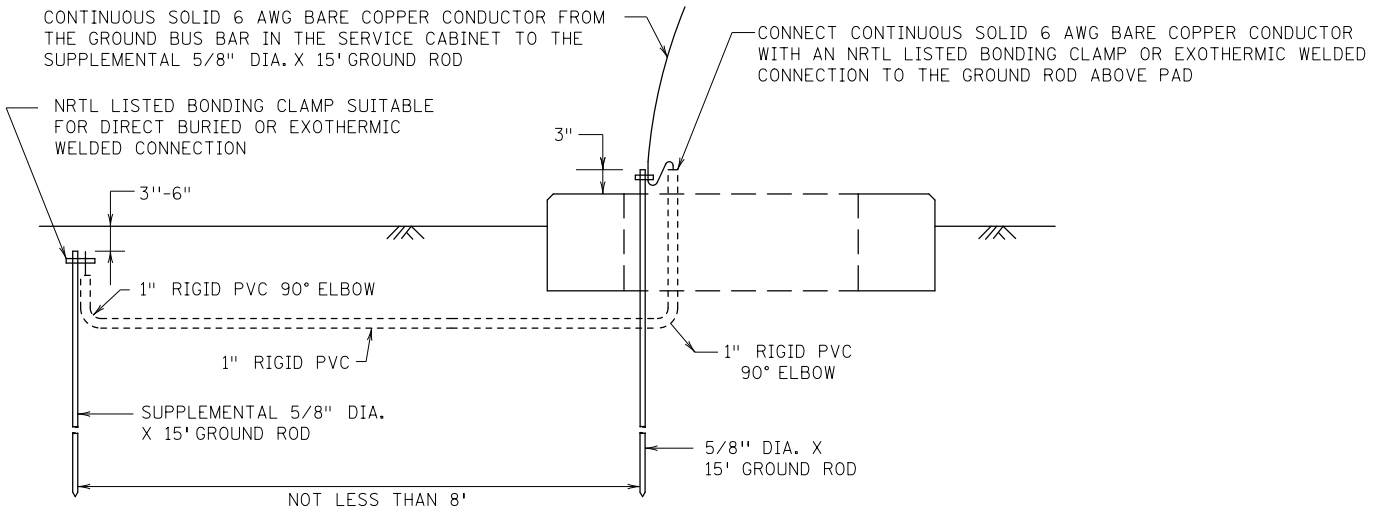
EQUIPMENT PAD B

SPECIFICATION  
REFERENCE  
2461, 2545  
2550, 2565

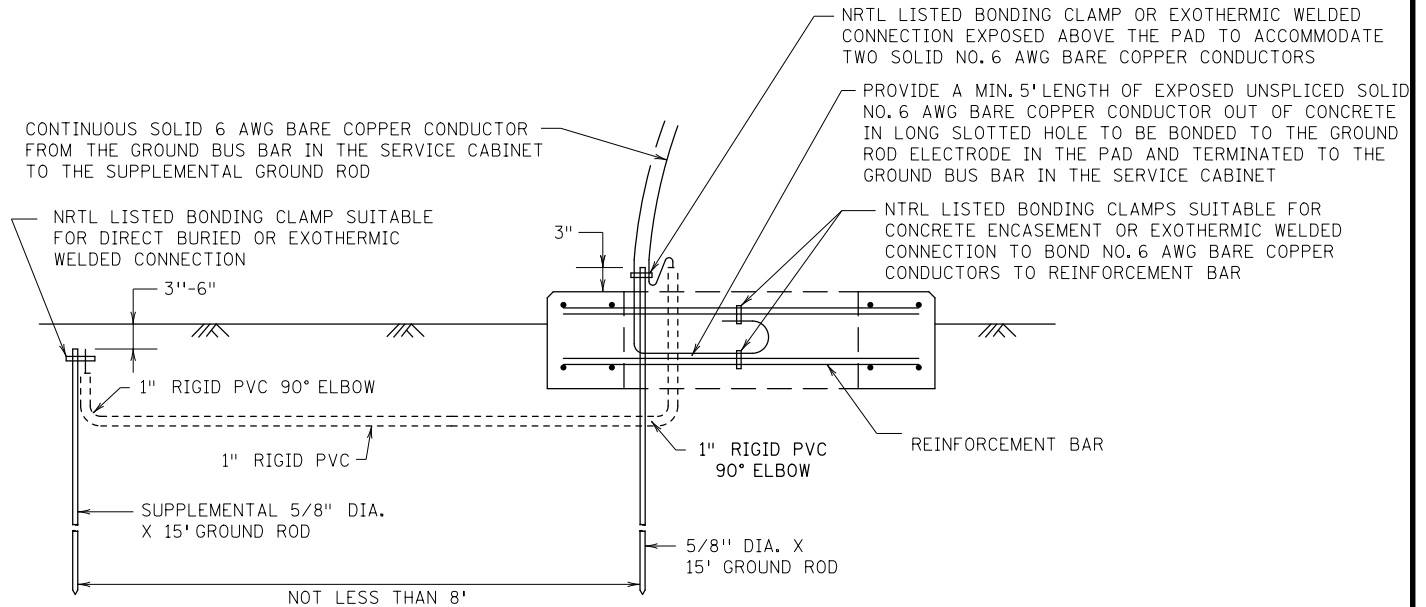
STANDARD  
PLATE  
NO.

8106D

2 OF 3



GROUNDING ELECTRODE SYSTEM FOR CAST-IN-PLACE PAD



GROUNDING ELECTRODE SYSTEM FOR PRECAST PAD

NOTES:

APPLY DE-OX COMPOUND TO THE GROUNDING CONNECTIONS AFTER FINAL ASSEMBLY.

APPROVED JULY 15, 2015

*Christy M. Ry*  
STATE DESIGN ENGINEER

STATE OF MINNESOTA  
DEPARTMENT OF TRANSPORTATION

EQUIPMENT PAD B

SPECIFICATION  
REFERENCE  
2461, 2545  
2550, 2565

STANDARD  
PLATE  
NO.

8106D

3 OF 3