

ex = 2.53'
K = 155
560.00' V.C.

ex = 1.54'
K = 73
300.00' V.C.

ex = 0.67'
K = 167
300.00' V.C.

ex = 1.08'
K = 416
600.00' V.C.

ex = 0.09'
K = 138
100.00' V.C.

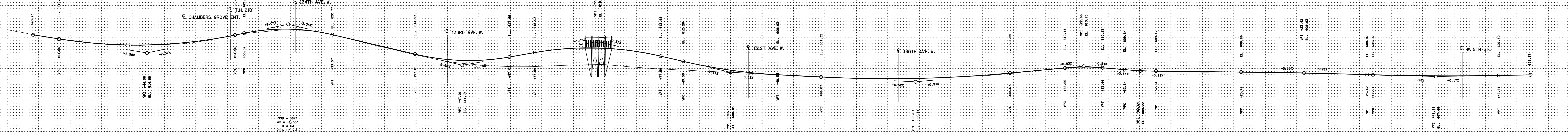
ex = 0.22'
K = 890
400.00' V.C.

SSD = 387'
ex = -1.53'
K = 54
280.00' V.C.

SSD = 466'
ex = -0.03'
K = 98
400.00' V.C.

SSD = 671'
ex = -0.26'
K = 68
120.00' V.C.

SSD = 6726'
ex = -0.08'
K = 2420
400.00' V.C.



100'
10'

100'
10'