

PLOTTED/REVISED: 6/17/2014

LOOP DETECTOR CHART		
NUMBER	SIZE (FT)	LOCATION
D2-1, D2-2 ①	6x6	180
D5-1	2-6x6	20 & 50
D5-2	2-6x6	5 & 35
D6-1, D6-2	6x6	180
D8-1	6x6	120
D8-2	2-6x6	5 & 20

-ALL LOOP DETECTORS SHALL BE PVC UNLESS NOTED OTHERWISE
-LOCATION: DISTANCE FROM CROSSWALK/STOP BAR IN FEET

① CONDUITS SUSPENDED UNDER BRIDGE, (3) JUNCTION BOXES AND (6) 6"x6" PVC LOOP DETECTORS ON BRIDGE NO. 9053, SHALL BE FURNISHED, INSTALLED AND PAID FOR AS PART OF THE BRIDGE CONTRACT. (SEE BRIDGE PLAN)

PED PB STATION
1-APS PB AND SIGN (RT ARROW) (PB6-2)
EXTEND INTO HH 8:
1" CONDUIT
1-2/C #14
1-1/C #6 INS. GR.

① INPLACE JB3 TO ABUTMENT
3" RSC SUSPENDED UNDER BRIDGE
F & I 2-2/C #14
** 1-6PR #19

① INPLACE JB1 TO JB2
3" RSC SUSPENDED UNDER BRIDGE
F & I 2-2/C #14
** 1-6PR #19

① INPLACE JB2 TO JB3
3" RSC SUSPENDED UNDER BRIDGE
F & I 4-2/C #14
** 1-6PR #19

① INPLACE 3" RSC STUBBED OUT OF ABUTMENT

HH 7 TO HH 8:
2" CONDUIT
2-2/C #14
** 1-6PR #19

HH 8 TO HH 9:
4" CONDUIT
2-12/C #14
2-4/C #14
* 1-3/C #14
1-3/C #14 (LUM)
8-2/C #14
* 1-3/C #20
** 1-6PR #19
1-1/C #6 INS. GR.

PED PB STATION
1-APS PB AND SIGN (LT ARROW) (PB6-1)
EXTEND INTO HH 9:
1" CONDUIT
1-2/C #14
1-1/C #6 INS. GR.

4" CONDUIT
2-12/C #14
2-4/C #14
* 1-3/C #14
1-3/C #14 (LUM)
2-2/C #14
* 1-3/C #20
1-1/C #6 INS. GR.

2" CONDUIT
2-2/C #14

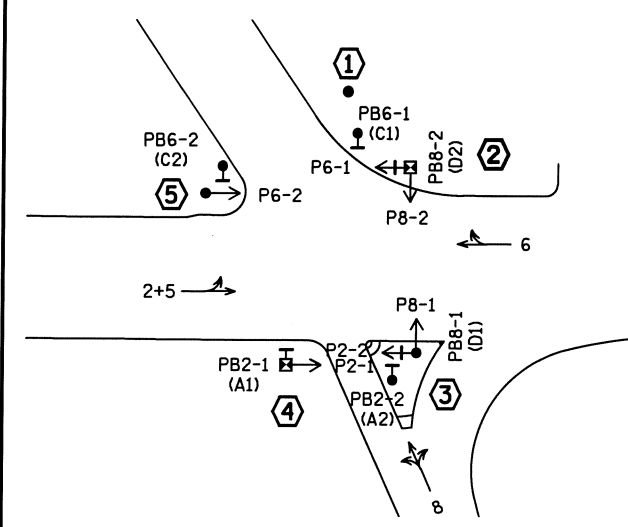
3" CONDUIT
1-4/C #14
3-2/C #14
1-1/C #6 INS. GR.

HH 6 TO HH 8:
4" CONDUIT
1-4/C #14
5-2/C #14
1-1/C #6 INS. GR.

PED PB STATION
1-APS PB AND SIGN (RT ARROW) (PB2-2)
EXTEND INTO HH 3:
1" CONDUIT
1-2/C #14
1-1/C #6 INS. GR.

2" CONDUIT
1-2/C #14

CONTROLLER PHASING, PEDESTRIAN INDICATIONS AND PUSH BUTTONS

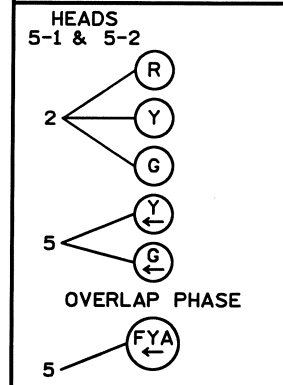


PEDESTRIAN PUSH BUTTONS SHALL BE LOCATED AS SHOWN ABOVE

SIGNAL SYSTEM OPERATION

- THE SIGNAL SYSTEM FLASH MODE IS ALL RED.
- NORMAL OPERATION IS 4 PHASE, WITH PHASE 5 BEING A FLASHING YELLOW ARROW BY TIME OF DAY.
- PHASES 2 AND 6 SHALL BE ON VEHICLE RECALL.

SIGNAL HEAD PHASING

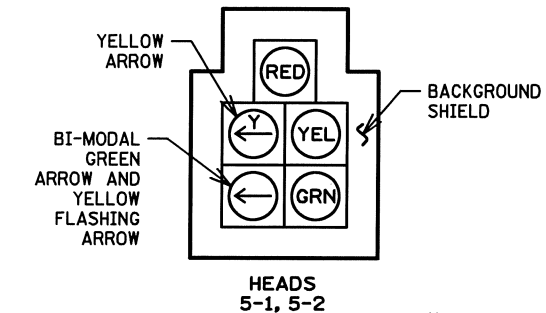


SIGNAL HEAD CHART

FACE	R	Y	FYA	G	Y	G
2-1, 2-2	●	●	←	●	←	←
5-1, 5-2	●	●	←	●	←	←
6-1, 6-2	●	●		●		
8-1, 8-2, 8-3	●	●		●		

-ALL SIGNAL INDICATIONS SHALL BE 12" LED
-ALL SIGNAL HEADS SHALL BE BLACK POLYCARBONITE WITH BACKGROUND SHIELDS
-FYA DENOTES FLASHING YELLOW ARROW

5 SECTION FYA BI-MODAL HEAD DETAIL



BY	DATE	REVISIONS

SYSTEM ID: 20579 T.E. 6007
METER ADDRESS: 1120 94TH ST. W
MASTER ID: T.E.

INTERSECTION LAYOUT
TRAFFIC CONTROL SIGNAL SYSTEM B
T.H. 35W EAST RAMP AT W 94TH ST.
IN BLOOMINGTON, HENNEPIN COUNTY

S.A.P. NO. 107-136-010

DRAWN BY: GDS CKD BY: EJA DATE: 01-28-14

CERTIFIED BY: *Michael P. Gubensky* L.C. NO. 19863 DATE: 02-06-14

STATE PROJ. NO. 2782-320 (T.H.35W) SHEET NO. SS12 OF SS20 SHEETS

DISTRICT #: METRO
PLOT NAME: layout B
PATH & FILENAME: IP_PWP-d0801382T20579_sgl.dgn

⑤ PA90 POLE FOUNDATION
 TYPE PA90-A-30-D40-9 (DAVIT AT 350 DEG)
 1-ANGLE MOUNT SIGNAL OVERHEAD AT 0'
 2-ANGLE MOUNT SIGNALS AT 90 AND 180 DEG
 1-ANGLE MOUNT C.D. PED HEAD AT 180 DEG
 * 1-ONE WAY EVP DETECTOR AND
 CONFIRMATORY LIGHT (LED) (PHASES 2+5)
 LUMINAIRE-250W HPS
 1-R9-3 SIGN (NO PEDS) FACING POLE 4
 S & I: 1-TYPE D SIGN (D-103)
 (SALVAGED FROM INPLACE POLE 5)
 3" CONDUIT TO HH 8:
 2-12/C #14
 1-4/C #14
 * 1-3/C #14
 1-3/C #14 (LUM)
 * 1-3/C #20
 1-1/C #6 INS. GR.

④ PEDESTAL FOUNDATION
 10' PEDESTAL POLE PLUS BASE
 1-STRAIGHT MOUNT C.D. PED HEAD AT 90 DEG
 1-APS PB AND SIGN (LT ARROW) (PB2-1)
 1-R9-3 SIGN (NO PEDS) FACING POLE 5
 3" CONDUIT TO HH 5:
 1-4/C #14
 1-2/C #14
 2-1/C #6 INS. GR.

① PA90 POLE FOUNDATION
 TYPE PA90-A-35
 1-ANGLE MOUNT SIGNAL OVERHEAD AT 0'
 1-ANGLE MOUNT SIGNAL AT 180 DEG
 * 1-ONE WAY EVP DETECTOR AND
 CONFIRMATORY LIGHT (LED) (PHASE 8)
 S & I: 1-R6-1R SIGN (ONE WAY)
 (SALVAGED FROM INPLACE POLE 7)
 S & I: 1-R6-1L SIGN (ONE WAY)
 (SALVAGED FROM INPLACE POLE 7)
 S & I: 1-TYPE D SIGN (D-101)
 (SALVAGED FROM INPLACE POLE 7)
 3" CONDUIT TO HH 9:
 1-12/C #14
 * 1-3/C #14
 * 1-3/C #20
 1-1/C #6 INS. GR.

② PEDESTAL FOUNDATION
 13' PEDESTAL POLE PLUS BASE
 1-STRAIGHT MOUNT SIGNAL WITH
 CLUSTER ADAPTER AT 180 DEG
 2-STRAIGHT MOUNT C.D. PED HEADS
 AT 180 AND 270 DEG
 1-APS PB AND SIGN (RT ARROW) (PB8-2)
 3" CONDUIT TO HH 1:
 1-12/C #14
 2-4/C #14
 1-2/C #14
 2-1/C #6 INS. GR.

③ PA85 POLE FOUNDATION
 TYPE PA85-A-25-D40-9 (DAVIT AT 350 DEG)
 1-ANGLE MOUNT SIGNAL WITH CLUSTER
 ADAPTER OVERHEAD AT 0'
 1-STRAIGHT MOUNT SIGNAL OVERHEAD AT 11'
 1-ANGLE MOUNT SIGNAL AT 180 DEG
 2-ANGLE MOUNT C.D. PED HEADS
 AT 90 AND 180 DEG
 1-APS PB AND SIGN (LT ARROW) (PB8-1)
 * 1-ONE WAY EVP DETECTOR AND
 CONFIRMATORY LIGHT (LED) (PHASE 6)
 LUMINAIRE-250W HPS
 1-R10-X12 SIGN ADJACENT TO HEAD (5-1)
 S & I: 1-TYPE D SIGN (D-102)
 (SALVAGED FROM INPLACE POLE 6)
 3" CONDUIT TO HH 3:
 2-12/C #14
 2-4/C #14
 * 1-3/C #14
 1-3/C #14 (LUM)
 1-2/C #14
 * 1-3/C #20
 1-1/C #6 INS. GR.

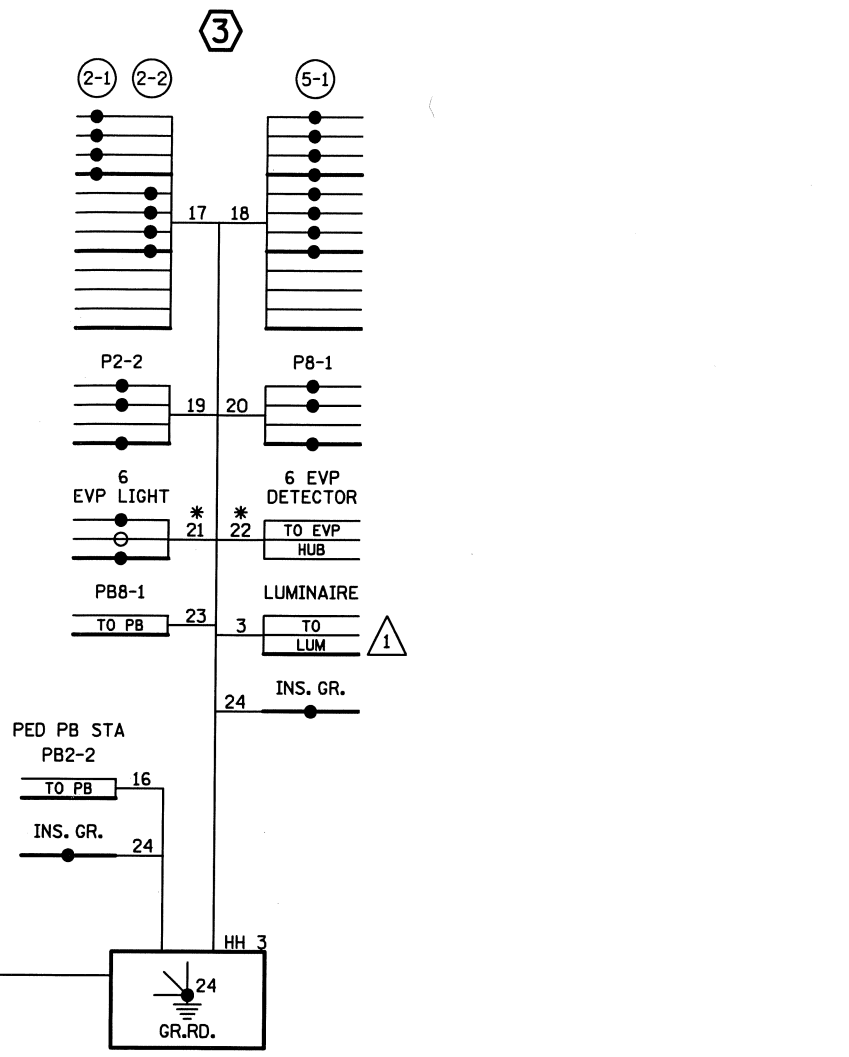
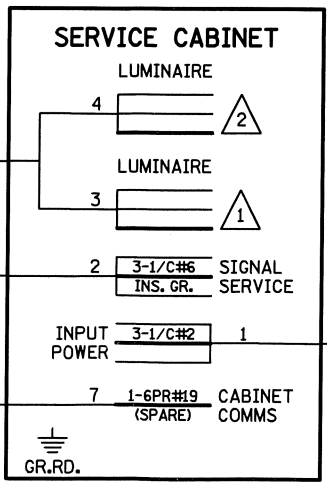
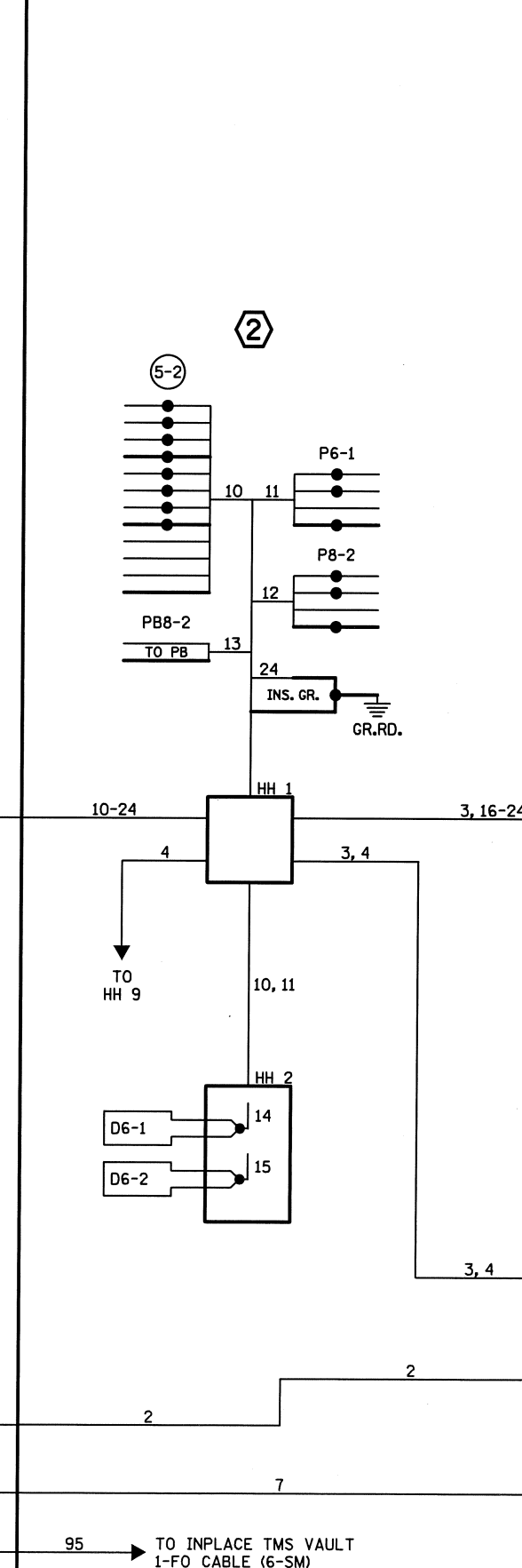
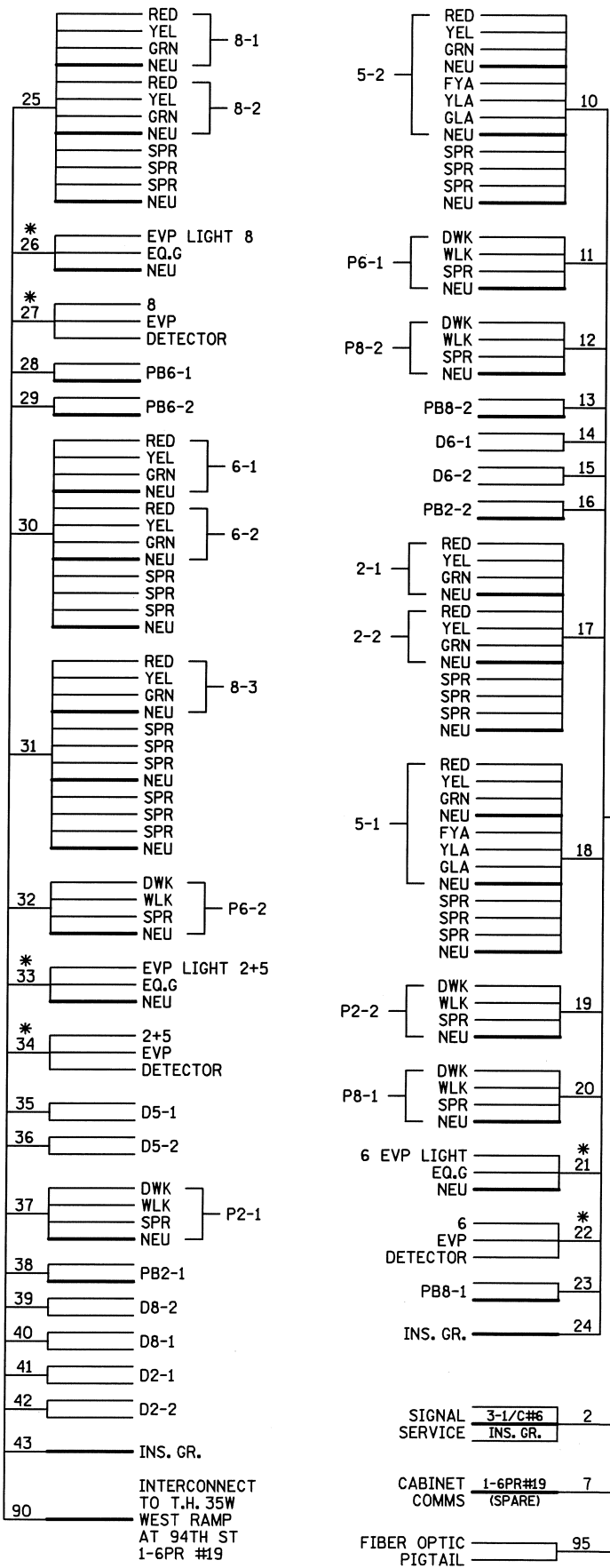
Ⓐ EQUIPMENT PAD (SEE DETAIL SHEET)
 SERVICE CABINET (SSB)
 CONTROLLER AND CABINET (STATE FURNISHED)
 4" CONDUIT TO HH 1: 4" CONDUIT TO HH 9:
 3-12/C #14 3-12/C #14
 4-4/C #14 2-4/C #14
 * 1-3/C #14 * 2-3/C #14
 5-2/C #14 9-2/C #14
 * 1-3/C #20 * 2-3/C #20
 1-1/C #6 INS. GR. ** 1-6PR #19
 1-1/C #6 INS. GR.

1-2" AND 1-3" CONDUIT STUBBED OUT (CAPPED BOTH ENDS)
 3/4" CONDUIT STUBBED OUT (FOR TELEPHONE LINE)
 CONTROLLER CABINET TO TMS VAULT:
 1-1/2" CONDUIT INSIDE 3" CONDUIT
 1-FO PIGTAIL (6-SM) (SEE NOTE 11)
 CONTROLLER CABINET TO SERVICE CABINET:
 2" CONDUIT
 2-1/C #6
 1-1/C #6 INS. GR.
 CONTROLLER CABINET TO SERVICE CABINET (COMMS):
 2" CONDUIT (FOR FUTURE USE)
 1-6PR #19
 SERVICE CABINET TO SOP VIA HH 10-12:
 2" CONDUIT
 3-1/C #2
 SERVICE CABINET TO HH 1:
 2" CONDUIT
 2-3/C #14 (LUM)
 HH 1 TO HH 9:
 2" CONDUIT
 1-3/C #14 (LUM)

Ⓑ INPLACE SOP-WOOD POLE
 (BY XCEL ENERGY)
 2" CONDUIT RISER, WEATHERHEAD
 AND CONDUIT TO HH 12:
 3-1/C #2

BY	DATE	REVISIONS	SYSTEM ID: 20579	T.E. 6007	INTERSECTION NOTES TRAFFIC CONTROL SIGNAL SYSTEM B T.H. 35W EAST RAMP AT W 94TH ST. IN BLOOMINGTON, HENNEPIN COUNTY	S.A.P. NO. 107-136-010	DRAWN BY: GDS	CKD BY: EJA	DATE: 01-28-14
			METER ADDRESS: 1120 94TH ST. W			CERTIFIED BY: <i>Michael P. Lubinsky</i>	LIC. NO. 19863	DATE: 02-06-14	
			MASTER ID:	T.E.		STATE PROJ. NO. 2782-320 (T.H. 35W) SHEET NO. SS13 OF SS20 SHEETS			

CONTROLLER CABINET



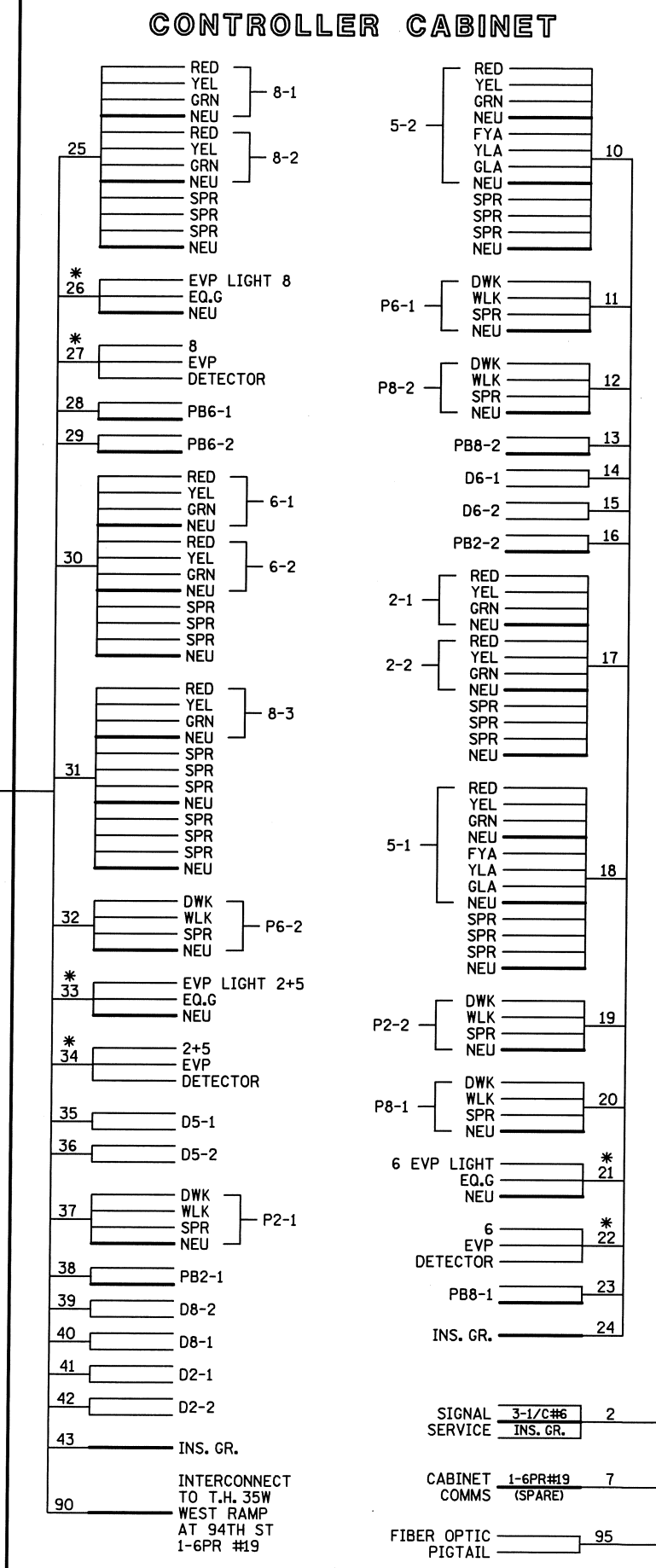
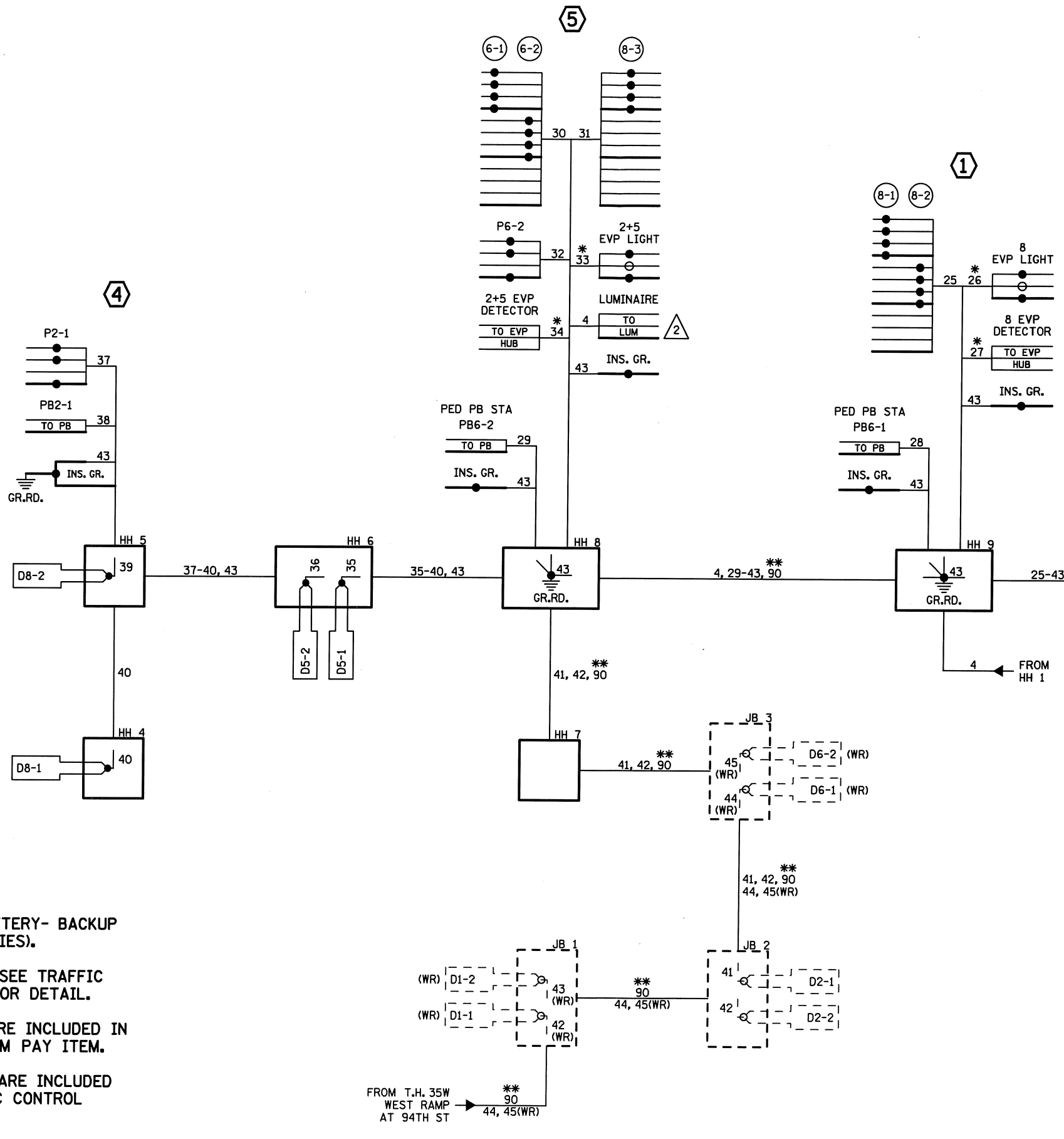
- NOTES:**
1. SIGNAL SYSTEM INCLUDES BATTERY- BACKUP SERVICE CABINET (NO BATTERIES).
 2. FOR CONDUCTOR COLOR CODE SEE TRAFFIC SIGNAL POLE WIRING CONNECTOR DETAIL.
 3. ITEMS DENOTED WITH AN * ARE INCLUDED IN PAYMENT FOR THE EVP SYSTEM PAY ITEM.
 4. ITEMS DENOTED WITH AN ** ARE INCLUDED IN PAYMENT FOR THE TRAFFIC CONTROL INTERCONNECTION PAY ITEM.

DISTRICT #: METRO
 IPLOT NAME: wiring IB
 PATH & FILENAME: IP_PWP:0080\382\T20579_sgl.dgn

BY	DATE	REVISIONS	SYSTEM ID: 20579	T.E. 6007	FIELD WIRING DIAGRAM (1 OF 2)	S.A.P. NO. 107-136-010	DRAWN BY:GDS	CKD BY:EJA	DATE:01-28-14
			METER ADDRESS: 1120 94TH ST. W		TRAFFIC CONTROL SIGNAL SYSTEM B	CERTIFIED BY: <i>Michael P. Lubinsky</i>			LIC. NO. 19863
			MASTER ID:	T.E.	T.H. 35W EAST RAMP AT W 94TH ST.	LICENSED PROFESSIONAL ENGINEER			DATE: 02-06-14
					IN BLOOMINGTON, HENNEPIN COUNTY	STATE PROJ.NO. 2782-320 (T.H.35W) SHEET NO. SS14 OF SS20 SHEETS			

PLOTTED/REVISED: 6/17/2014

DISTRICT #: METRO
 IPLOT NAME: wiring 2B
 PATH & FILENAME: IP_PWP-d0801382T20579_sgl.dgn



- NOTES:**
1. SIGNAL SYSTEM INCLUDES BATTERY- BACKUP SERVICE CABINET (NO BATTERIES).
 2. FOR CONDUCTOR COLOR CODE SEE TRAFFIC SIGNAL POLE WIRING CONNECTOR DETAIL.
 3. ITEMS DENOTED WITH AN * ARE INCLUDED IN PAYMENT FOR THE EVP SYSTEM PAY ITEM.
 4. ITEMS DENOTED WITH AN ** ARE INCLUDED IN PAYMENT FOR THE TRAFFIC CONTROL INTERCONNECTION PAY ITEM.

FROM T.H. 35W WEST RAMP AT 94TH ST
 ** 90 44, 45(WR)

	BY	DATE	REVISIONS	SYSTEM ID: 20579	T.E. 6007	FIELD WIRING DIAGRAM (2 OF 2) TRAFFIC CONTROL SIGNAL SYSTEM B T.H. 35W WEST RAMP AT W 94TH ST. IN BLOOMINGTON, HENNEPIN COUNTY	S.A.P. NO. 107-136-010	DRAWN BY: GDS	CKD BY: EJA	DATE: 01-28-14	
				METER ADDRESS: 1120 94TH ST. W			CERTIFIED BY: <i>Michael P. Lubinsky</i>	LIC. NO. 19863	DATE: 02-06-14		
				MASTER ID:	T.E.		STATE PROJ. NO. 2782-320 (T.H. 35W) SHEET NO. SS15 OF SS20 SHEETS				