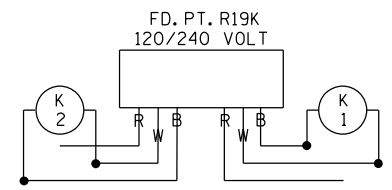
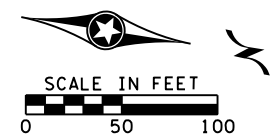
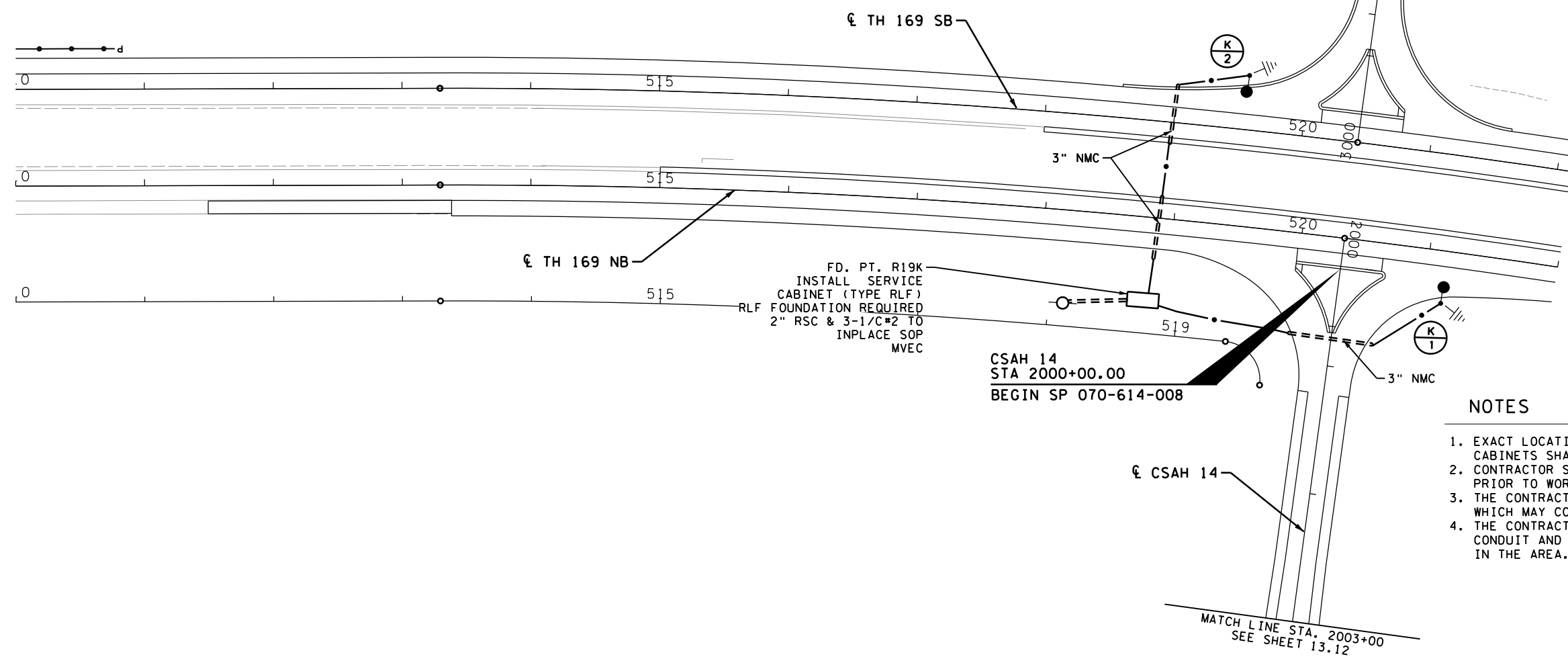


FEEDPOINT R19K						
LIGHTING STANDARDS AND BASES						
NO.	STATION	LT	RT	LOCATION	TYPE	MH
1	521+13		X	TH 169 NB	9-40	40
2	519+53	X		TH 169 SB	9-40	40



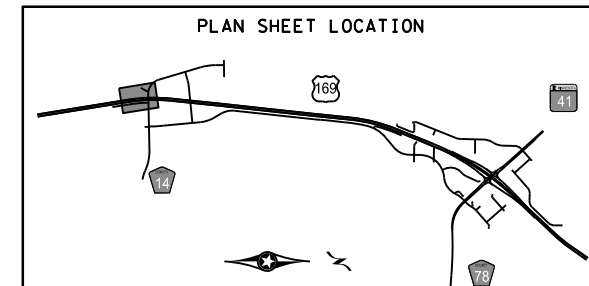
B AND R DENOTE CURRENT CARRYING CONDUCTORS
W DENOTES NEUTRAL CONDUCTOR
GROUND NOT SHOWN



LEGEND	
	INSTALL LIGHTING UNIT
	LIGHTING UNIT TYPE 9-40
	UNDERPASS LUMINAIRE
	LIGHTING UNIT TYPE SPECIAL
	CONDUIT
	DIRECT BURIED 4 CONDUCTOR NO. 4
	HANDHOLE
	INSTALL PAD MOUNTED FD. PT. CABINET RLF FOUNDATION
	PAD MOUNTED FD. PT. CABINET EQUIPMENT PAD B
	PERMANENT GROUND ROD (25 OHMS OR LESS)
	SOURCE OF POWER (BY OTHERS)
	SOURCE OF POWER (INPLACE)

NOTES

1. EXACT LOCATIONS OF LIGHT FOUNDATIONS, HANDHOLES AND SERVICE CABINETS SHALL BE LOCATED BY THE ENGINEER IN THE FIELD.
2. CONTRACTOR SHALL BE RESPONSIBLE FOR LOCATING ALL UTILITIES PRIOR TO WORK.
3. THE CONTRACTOR SHALL ADJUST EXISTING CONDUITS OR UTILITIES WHICH MAY CONFLICT WITH LIGHT POLE FOUNDATIONS INSTALLATION.
4. THE CONTRACTOR SHALL COORDINATE THE PLACEMENT OF HANDHOLES, CONDUIT AND LIGHT FOUNDATIONS WITH OTHER CONSTRUCTION ACTIVITIES IN THE AREA.



DATE: 4/11/2018 9:03:41 AM
PATH & FILENAME: K:\03212-040\Cad\Plan\cd7005-121.lp02.dgn

NO.	DATE	BY	CHK	REVISIONS

Design By: ES
Plan By: MF
Checked By: JT
Approved By: SD

I HEREBY CERTIFY THAT THIS PLAN WAS PREPARED BY ME OR UNDER MY DIRECT SUPERVISION AND THAT I AM A DULY LICENSED PROFESSIONAL ENGINEER UNDER THE LAWS OF THE STATE OF MINNESOTA.

Sean Delmore
LICENSED PROFESSIONAL ENGINEER - SEAN DELMORE, PE
DATE: 03/23/2018 40945



TH 169/TH 41/CSAH 78 DDI
147th St. Overpass
Scott County, Minnesota

LIGHTING PLAN
S.P.7005-121 (TH 169), S.P.070-596-013, ET AL

SHEET
13.04
OF
13.13
SHEETS