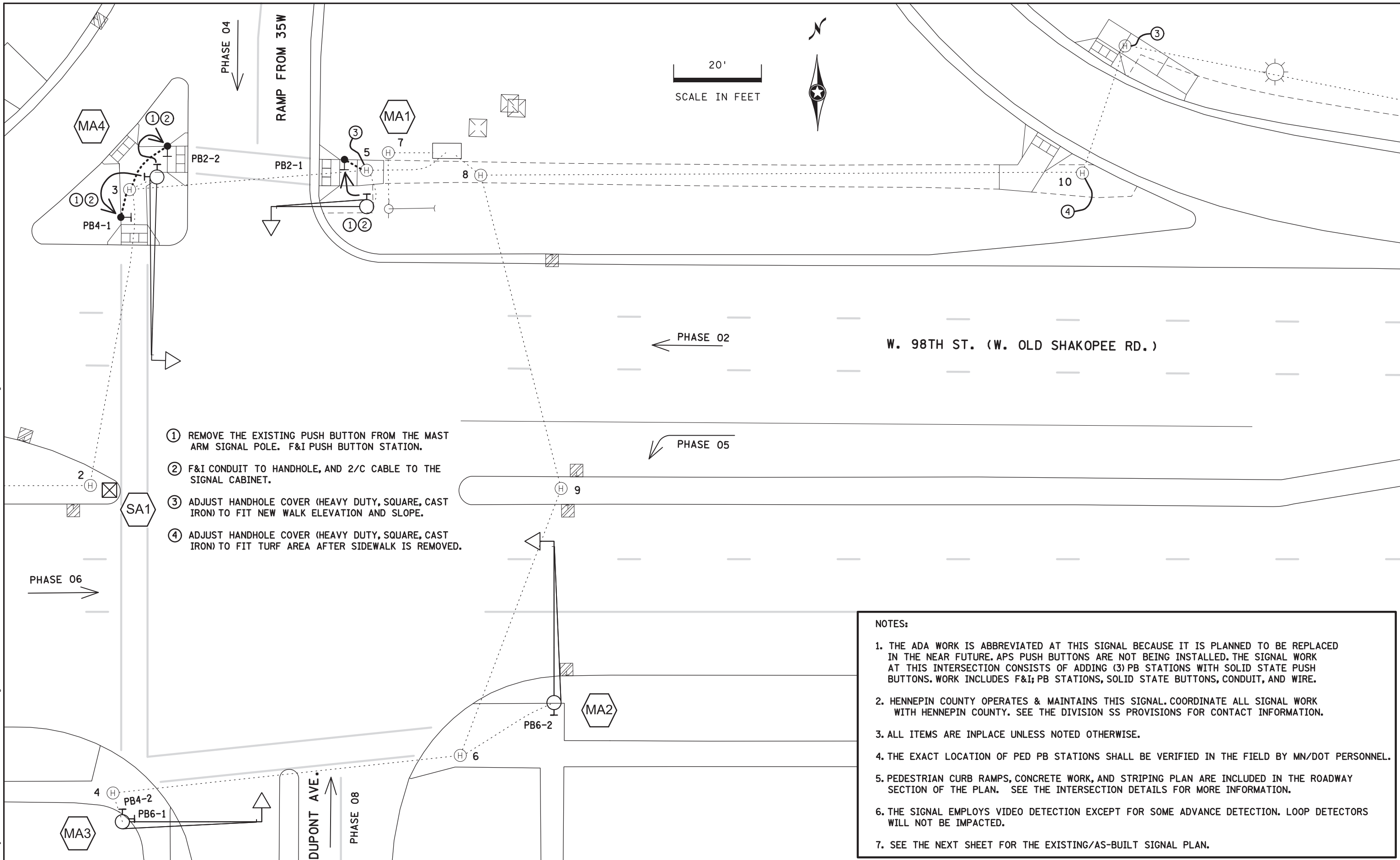


PLOTTED/REVISED: 26-OCT-2022

DISTRICT #: Metro  
 PLOT NAME: SIGNAL WORK LAYOUT  
 FILENAME: Projects\DM\_PROS\035W\0000\Traffic\Signals\6.24 1735272 (20578) CSAH (1) W 98TH ST W RAMP\VT35272R.dgn



- ① REMOVE THE EXISTING PUSH BUTTON FROM THE MAST ARM SIGNAL POLE. F&I PUSH BUTTON STATION.
- ② F&I CONDUIT TO HANDHOLE, AND 2/C CABLE TO THE SIGNAL CABINET.
- ③ ADJUST HANDHOLE COVER (HEAVY DUTY, SQUARE, CAST IRON) TO FIT NEW WALK ELEVATION AND SLOPE.
- ④ ADJUST HANDHOLE COVER (HEAVY DUTY, SQUARE, CAST IRON) TO FIT TURF AREA AFTER SIDEWALK IS REMOVED.

**NOTES:**

1. THE ADA WORK IS ABBREVIATED AT THIS SIGNAL BECAUSE IT IS PLANNED TO BE REPLACED IN THE NEAR FUTURE. APS PUSH BUTTONS ARE NOT BEING INSTALLED. THE SIGNAL WORK AT THIS INTERSECTION CONSISTS OF ADDING (3) PB STATIONS WITH SOLID STATE PUSH BUTTONS. WORK INCLUDES F&I; PB STATIONS, SOLID STATE BUTTONS, CONDUIT, AND WIRE.
2. HENNEPIN COUNTY OPERATES & MAINTAINS THIS SIGNAL. COORDINATE ALL SIGNAL WORK WITH HENNEPIN COUNTY. SEE THE DIVISION SS PROVISIONS FOR CONTACT INFORMATION.
3. ALL ITEMS ARE INPLACE UNLESS NOTED OTHERWISE.
4. THE EXACT LOCATION OF PED PB STATIONS SHALL BE VERIFIED IN THE FIELD BY MN/DOT PERSONNEL.
5. PEDESTRIAN CURB RAMPS, CONCRETE WORK, AND STRIPING PLAN ARE INCLUDED IN THE ROADWAY SECTION OF THE PLAN. SEE THE INTERSECTION DETAILS FOR MORE INFORMATION.
6. THE SIGNAL EMPLOYS VIDEO DETECTION EXCEPT FOR SOME ADVANCE DETECTION. LOOP DETECTORS WILL NOT BE IMPACTED.
7. SEE THE NEXT SHEET FOR THE EXISTING/AS-BUILT SIGNAL PLAN.

BY	DATE	REVISIONS

SYSTEM ID: 1735272 T.E.  
 METER ADDRESS:  
 OLD SYSTEM ID: 20578

**SIGNAL WORK LAYOUT**  
**T.H. 35W W RAMP/DUPONT AVE S**  
**AT W 98TH ST (CSAH 1)**  
**BLOOMINGTON, HENNEPIN COUNTY**

S.A.P. NO. \_\_\_\_\_ DRAWN BY: CDB CKD BY: CDB DATE: 8/3/22  
 CERTIFIED BY *Gregory Ken* LIC. NO. 26829 DATE: 10/26/22  
 STATE PROJ. NO. 2782-352 (T.H.35W) SHEET NO. SS3 OF SS4 SHEETS

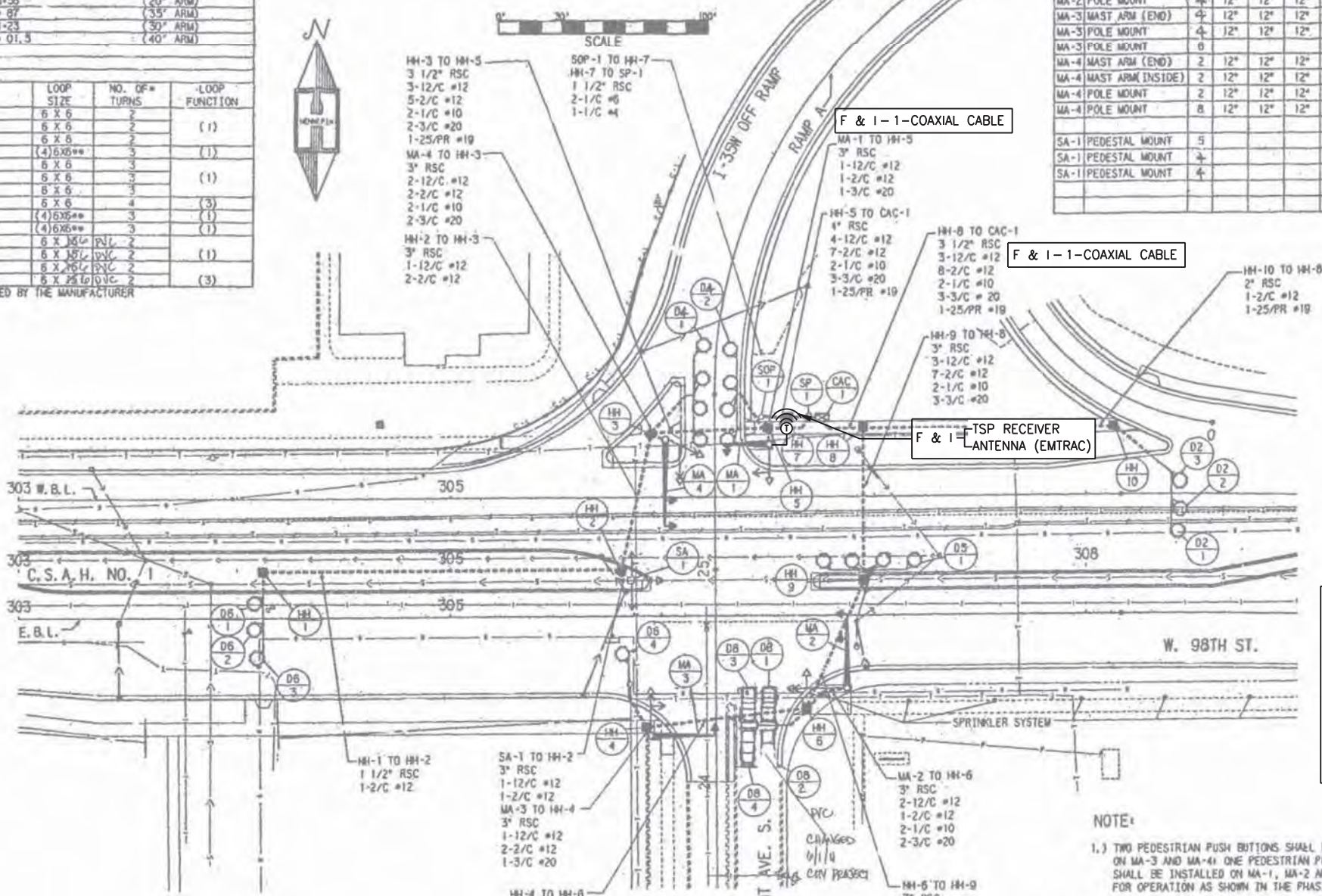
SIGNAL STRUCTURE AND COMPONENT LOCATION			
NO.	LOCATION	NO.	LOCATION
HH-1	W. 304 - 12 - 22' LT.	HH-10	W. 308 - 13 - 32' LT.
HH-2	W. 305 - 60 - 22' LT.		
HH-3	W. 305 - 95 - 28' LT.	CAC-1	W. 308 - 75 - 37' LT.
HH-4	W. 305 - 95 - 53' RT.	SP-1	WEST SIDE OF CAC-1 FOUNDATION
HH-5	W. 306 - 30 - 32' LT.	SOP-1	W. 308 - 47 - 37' LT.
HH-6	W. 306 - 68 - 44' RT.		
HH-7	W. 306 - 60 - 57' LT.		
HH-8	W. 306 - 95 - 32' LT.		
HH-9	W. 308 - 95 - 40' RT.		

NO.	LOCATION	NO.	LOCATION
MA-1	RAMP A 25-28 - 25.5 RT. ATM ARM TO RAMP A 25-28 (20' ARM)		
MA-2	W. 306 - 87 - 34' RT. ATM ARM TO W. 306 - 87 (35' ARM)		
MA-3	RAMP A 24-23 - 31' LT. ATM ARM TO RAMP A 24-23 (30' ARM)		
MA-4	W. 306 - 01.5-27' LT. ATM ARM TO W. 306 - 01.5 (40' ARM)		
SA-1	W. 305 - 88 - 17' LT.		

NO.	LOCATION	LOOP SIZE	NO. OF TURNS	LOOP FUNCTION
D2-1	WEST EDGE AT W. 308 - 40 NORTH EDGE 15' RT.	6 X 6	2	(1)
D2-2	WEST EDGE AT W. 308 - 41 NORTH EDGE 3' RT.	6 X 6	2	(1)
D2-3	WEST EDGE AT W. 308 - 41 NORTH EDGE 9' LT.	6 X 6	2	(1)
D5-1	WEST EDGE AT W. 306 - 72 NORTH EDGE 27' RT.	(4) 6X6**	3	(1)
D6-1	EAST EDGE AT W. 304 - 11 SOUTH EDGE 3' LT.	6 X 6	3	(1)
D6-2	EAST EDGE AT W. 304 - 11 NORTH EDGE 3' RT.	6 X 6	3	(1)
D6-3	E. EDGE AT W. 304 - 12 NORTH EDGE 15' RT.	6 X 6	3	(1)
D6-4	E. EDGE AT W. 305 - 82 NORTH EDGE 15' RT.	6 X 6	4	(3)
DA-1	SOUTH EDGE AT RAMP A 25-28 EAST EDGE 3' LT.	(4) 6X6**	3	(1)
DA-2	SOUTH EDGE AT RAMP A 25-28 WEST EDGE 3' RT.	(4) 6X6**	3	(1)
DB-3	NORTH EDGE AT RAMP A 24-23 WEST EDGE 11.5' RT.	6 X 6	2	(1)
DB-4	NORTH EDGE AT RAMP A 24-22 WEST EDGE 11.5' RT.	6 X 6	2	(1)
DB-1	NORTH EDGE AT RAMP A 24-23 WEST EDGE 21.5' RT.	6 X 6	2	(1)
DB-2	NORTH EDGE AT RAMP A 24-22 WEST EDGE 21.5' RT.	6 X 6	2	(3)

\* NUMBER OF TURNS IN THE LOOP UNLESS OTHERWISE SPECIFIED BY THE MANUFACTURER  
 \*\* MULTIPLE LOOP DETECTOR PER STD. PLATE NO. 81300  
 (1) CALL AND EXTEND  
 (2) CALL ONLY  
 (3) DELAY CALL AND EXTEND

SIG. POLE NO.	SIGNAL FACE MOUNT	SIG. Ø	INDICATION SIZE AND TYPE						BRACKET MOUNTING ANGLE, TYPE AND STANDARD PLATE NO.		
			CIRCULAR			LT. TURN ARROW					
			RED	YEL	GRN	RED	YEL	GRN	WALK	WALK	
MA-1	MAST ARM (END)	8	12"	12"	12"						STD. ONE-WAY/PLATE 8124D
MA-1	POLE MOUNT	8	12"	12"	12"				9"	9"	270° PLATE 8110C TYPE 10B
MA-2	MAST ARM (END)	8	12"	12"	12"						STD. ONE-WAY/PLATE 8124D
MA-2	MAST ARM (INSIDE)	6	12"	12"	12"				9"	9"	270° PLATE 8110C TYPE 20B
MA-2	POLE MOUNT	6	12"	12"	12"				9"	9"	270° PLATE 8110C TYPE 10C
MA-3	MAST ARM (END)	4	12"	12"	12"						STD. ONE-WAY/PLATE 8124D
MA-3	MAST ARM (INSIDE)	4	12"	12"	12"				9"	9"	270° PLATE 8110C TYPE 10C
MA-3	POLE MOUNT	4	12"	12"	12"				9"	9"	270° PLATE 8110C TYPE 10C
MA-4	MAST ARM (END)	2	12"	12"	12"						STD. ONE-WAY/PLATE 8124D
MA-4	MAST ARM (INSIDE)	2	12"	12"	12"				9"	9"	270° PLATE 8110C TYPE 20C
MA-4	POLE MOUNT	2	12"	12"	12"				9"	9"	270° PLATE 8110C TYPE 20C
MA-4	POLE MOUNT	8	12"	12"	12"				9"	9"	270° PLATE 8110C TYPE 20C
SA-1	PEDESTAL MOUNT	5				12"	12"	12"			PLATE 8111B TYPE 1F
SA-1	PEDESTAL MOUNT	4							9"	9"	PLATE 8111B TYPE 1F
SA-1	PEDESTAL MOUNT	4							9"	9"	PLATE 8111B TYPE 1F



CAC-1 SALVAGE -TRAFFIC SIGNAL CONTROLLER  
 F & I -TRAFFIC SIGNAL CONTROLLER (ECONOLITE COBALT)  
 TSP RECEIVER ANTENNA (EMTRAC)

- NOTES:**
- ALL ITEMS ARE IN PLACE AND SHALL REMAIN IN PLACE, UNLESS NOTED OTHERWISE.
  - THE CONTRACTOR SHALL VERIFY AS-BUILT INFORMATION IN THE FIELD.
  - THE LOCATION OF ALL NEW SIGNAL COMPONENTS IS APPROXIMATE AND SHALL BE DETERMINED BY THE ENGINEER IN THE FIELD.
  - THE CONTRACTOR SHALL LOCATE ALL UTILITIES PRIOR TO INSTALLATION.
  - SEE MOUNTING DETAIL SHEET FOR INSTALLATION OF THE TSP ANTENNA AND COAXIAL CABLE.

- NOTE:**
- TWO PEDESTRIAN PUSH BUTTONS SHALL BE INSTALLED ON MA-3 AND MA-4; ONE PEDESTRIAN PUSH BUTTON SHALL BE INSTALLED ON MA-1, MA-2 AND SA-1 FOR OPERATION AS SHOWN IN THE PHASING LAYOUT.
  - ONE 250 WATT HIGH PRESSURE SODIUM VAPOR LUMINAIRE SHALL BE INSTALLED ON MA-2 AND MA-4 LUMINAIRE SHAFT EXTENSION.
  - THE SIGNAL SYSTEM SHALL NOT INCLUDE THE INTERCONNECT QUANTITIES.
  - SEE SPECIAL PROVISIONS FOR EMERGENCY VEHICLE PRE-EMPTION (EVP) SYSTEM.

C.S.A.H. NO. 1 AT I-35W WEST JCT.

ID 1735272

NO.	REVISIONS	BY	APP	DATE

DESIGNED:	CHECKED:
MAB	NJE
DRAWN:	APPROVED:
MAB	NJE

I HEREBY CERTIFY THAT THIS PLAN, SPECIFICATION OR REPORT WAS PREPARED BY ME OR UNDER MY DIRECT SUPERVISION AND THAT I AM A DULY LICENSED PROFESSIONAL ENGINEER UNDER THE LAWS OF THE STATE OF MINNESOTA.  
 CERTIFIED BY *Nickolas J. Erpelding*  
 LIC. NO. 44582 DATE 11/09/2017

**W 98TH ST AT 35W W RAMP/DUPONT AVE S (SYSTEM "I")**  
**SIGNAL PLANS - INTERSECTION LAYOUT**  
 STATE PROJ.NO.2782-346 (T.H. 35W) SHEET NO. 136 OF 534 SHEETS