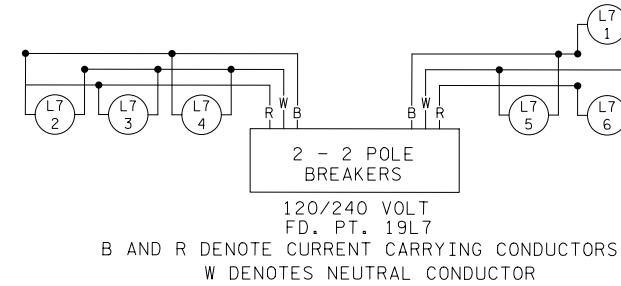
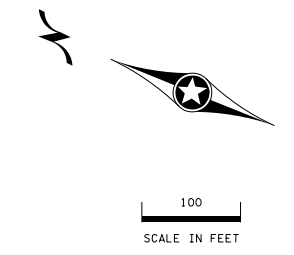


LEGEND

- LIGHTING UNIT TYPE 9-40 LED & LIGHT BASE DESIGN E
- LIGHTING UNIT TYPE 9D-40 LED & LIGHT BASE DESIGN E
- DIRECT BURIED CABLE 4 CONDUCTOR NO. 4
- 3" NON-METALLIC CONDUIT DIRECTIONAL BORE (UNLESS OTHERWISE NOTED).
- PERMANENT GROUND ROD (25 OHMS OR LESS)
- PAD MOUNTED FEEDPOINT
- OHF INPLACE OVERHEAD POWER LINES

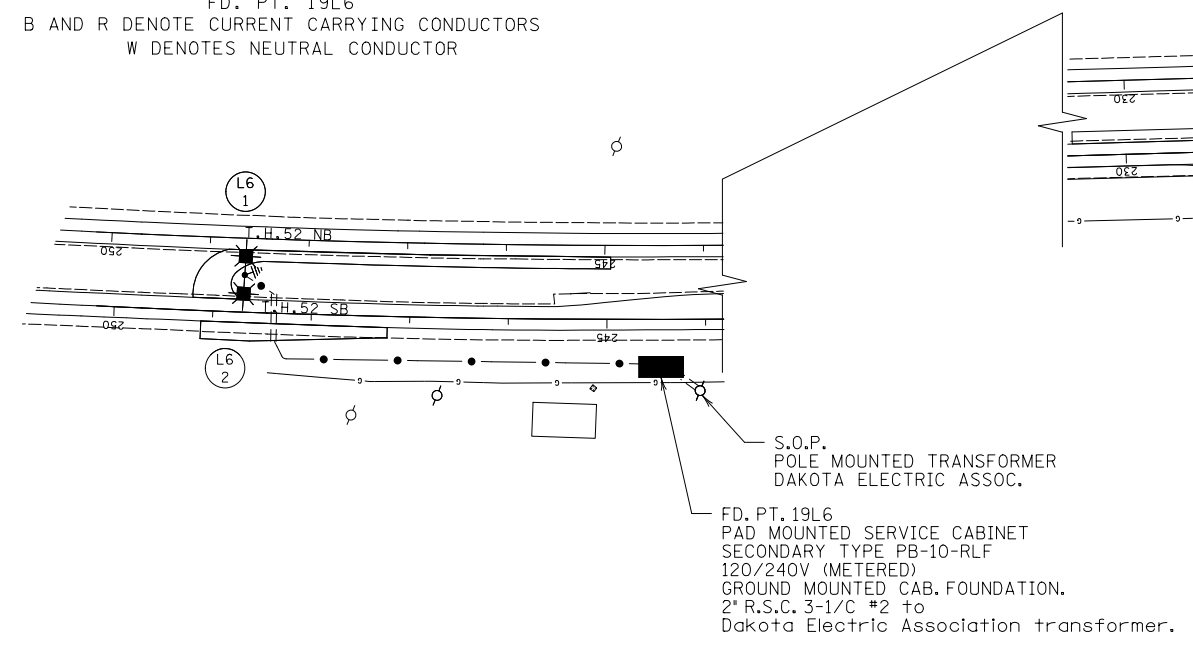
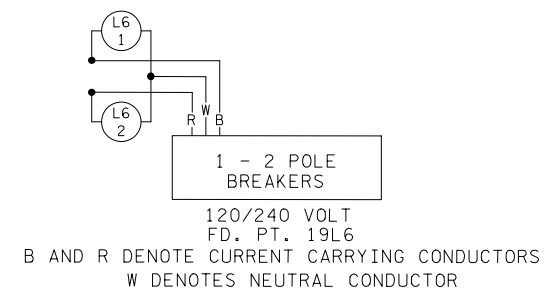


FEED POINT 19L7

LIGHTING STANDARDS AND BASES						
NO.	STA.	ALI	LT.	RT.	LOCATION	TYPE
1	214+00	NB TH52	---		T.H. 52	9D-40 LED
2	222+15	NB TH52		---	T.H. 52	9-40 LED
3	224+50	NB TH52		---	T.H. 52	9-40 LED
4	224+65	SB TH52	---		T.H. 52	9-40 LED
5	222+25	SB TH52	---		T.H. 52	9-40 LED

FEED POINT 19L6

LIGHTING STANDARDS AND BASES						
NO.	STA.	ALI	LT.	RT.	LOCATION	TYPE
1	248+70	NB52	---		T.H. 52	9D-40 LED
2						



FEEDPOINT ADDRESSES: 19L6-19121 COATES BLVD VERMILLION TWP 55033
19L7-19951 COATES BLVD VERMILLION TWP 55033

BY	DATE	REVISIONS
PB	12-7-2017	RELOCATED POLE 19L6 1/2 AS PART OF S.P.1906-65
DRAWN BY:	PB	CKD BY: GB DATE: 7/2013

FEEDPOINT: 19L6 & 19L7 LOCATION: C.S.A.H. 66
METER ADDRESS: SEE ABOVE

CERTIFIED BY Michael P. Lubinsky LIC. NO. 19863 DATE: 7-DEC-2017
LICENSED PROFESSIONAL ENGINEER

LIGHTING PLAN

STATE PROJ. NO. 1906-57 (T.H. 52) SHEET NO. SL4 OF SL4 SHEETS

DISTRICT #: Metro
 I/PLOT NAME: 1906-57_LED.II.dgn
 PATH & FILENAME: Projects\DM_ROS\0521906\057\Traffic\Lighting\1906-57_LED.II.dgn

PLOTTED/REVISED: 7-DEC-2017