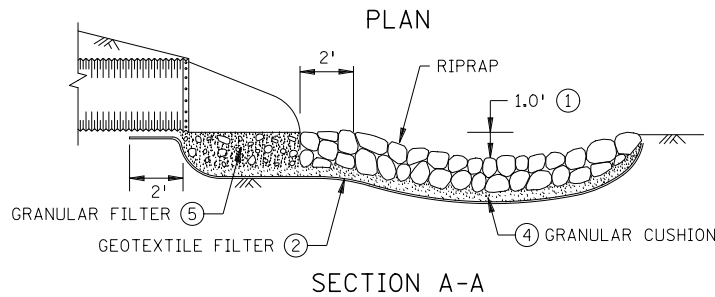
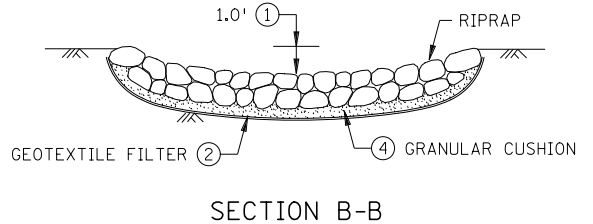
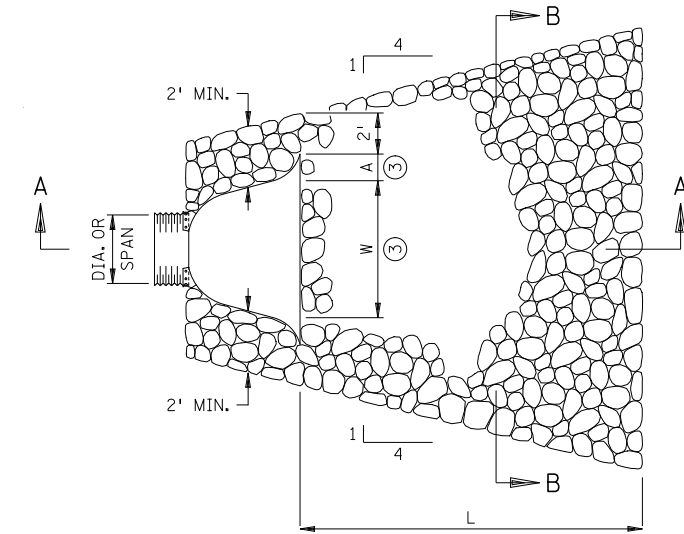


TABLE OF QUANTITIES
RIPRAP AT CSP OUTLETS

DIA. OF ROUND PIPE (IN.)	L (FT.)	CLASS II $d_{50} = 6''$			CLASS III $d_{50} = 9''$			CLASS IV $d_{50} = 12''$		
		GEO-TEXTILE FILTER (SQ. YD.)	GRANUL FILTER UNDER APRON (CU. YD.)	12" DEPTH RIPRAP (CU. YD.)	GEO-TEXTILE FILTER (SQ. YD.)	GRANULAR FILTER UNDER APRON (CU. YD.)	18" DEPTH RIPRAP (CU. YD.)	GEO-TEXTILE FILTER (SQ. YD.)	GRANUL FILTER UNDER APRON (CU. YD.)	24" DEPTH RIPRAP (CU. YD.)
12	8	16.4	0.2	3.0	19.2	0.2	4.5	22.3	0.3	6.0
15	8	17.8	0.2	3.3	20.7	0.3	4.9	23.9	0.4	6.6
18	10	22.9	0.3	4.6	26.2	0.5	6.8	29.7	0.6	9.1
21	10	24.5	0.4	4.9	27.9	0.6	7.3	31.5	0.8	9.7
24	12	30.4	0.5	6.4	34.2	0.8	9.5	38.2	1.0	12.7
30	14	38.9	0.8	8.5	43.2	1.2	12.7	47.7	1.5	16.9
36	16	48.3	1.1	10.8	53.1	1.6	16.2	58.1	2.1	21.6
42	18	58.7	1.5	13.5	64.0	2.2	20.2	69.5	2.9	27.0
48	20	68.5	1.8	16.0	74.2	2.7	24.0	80.1	3.5	32.0

TABLE OF QUANTITIES
RIPRAP AT CSP-A OUTLETS

SPAN OF PIPE ARCH (IN.)	L (FT.)	CLASS II $d_{50} = 6''$			CLASS III $d_{50} = 9''$			CLASS IV $d_{50} = 12''$		
		GEO-TEXTILE FILTER (SQ. YD.)	GRANUL FILTER UNDER APRON (CU. YD.)	12" DEPTH RIPRAP (CU. YD.)	GEO-TEXTILE FILTER (SQ. YD.)	GRANULAR FILTER UNDER APRON (CU. YD.)	18" DEPTH RIPRAP (CU. YD.)	GEO-TEXTILE FILTER (SQ. YD.)	GRANUL FILTER UNDER APRON (CU. YD.)	24" DEPTH RIPRAP (CU. YD.)
17	8	18.7	0.2	3.1	20.1	0.3	4.7	23.2	0.3	6.3
21	10	21.9	0.3	4.5	25.1	0.4	6.7	28.6	0.5	9.0
24	10	23.5	0.3	4.9	26.8	0.5	7.4	30.4	0.6	9.8
28	12	29.2	0.4	6.4	32.9	0.6	9.6	36.8	0.8	12.9
35	14	36.8	0.6	8.5	41.0	0.9	12.8	45.4	1.2	17.1
42	16	46.5	0.9	11.2	51.1	1.3	16.8	56.0	1.7	22.5
49	18	55.5	1.1	13.8	60.6	1.7	20.7	66.0	2.2	27.6
57	20	66.6	1.5	17.0	72.2	2.3	25.5	78.0	3.0	34.0



NOTES:

- REQUIREMENTS FOR GEOTEXTILE TYPE, RIPRAP SIZE AND THICKNESS SHALL BE DESIGNATED IN THE PLANS.
- PIPE SIZES LARGER THAN THOSE SHOWN REQUIRE A SPECIAL DESIGN.
- ① FOR PIPES GREATER THAN OR EQUAL TO 30", USE 1.5'.
- ② GEOTEXTILE FILTER, SPEC. 3733, SHALL COVER THE BOTTOM AND SIDES OF THE AREA EXCAVATED FOR THE RIPRAP, GRANULAR FILTER MATERIALS.
- ③ DIMENSIONS W AND A ARE GIVEN ON STANDARD PLATES 3122 AND 3123.
- ④ GRANULAR FILTER, SPEC. 3601, MAY BE USED AS A CUSHION LAYER. PLACE FILTER PER SPEC. 2511. THE CUSHION LAYER IS INCIDENTAL.
- ⑤ GRANULAR FILTER OR RIPRAP, SPEC. 3601, TO EXTEND UNDER ENTIRE OPEN PORTION OF PIPE APRON. DEPTH OF MATERIAL UNDER APRON SHALL MATCH RIPRAP DEPTH. WHEN USING RIPRAP INCREASE RIPRAP QUANTITY ACCORDINGLY AND PLACE A 3" LAYER OF 1.5" CRUSHED ROCK UNDER THE APRON TO AID IN GRADING FOR APRON PLACEMENT. CRUSHED ROCK IS INCIDENTAL.

APPROVED DECEMBER 9, 2013

Christina Ry
STATE DESIGN ENGINEER

STATE OF MINNESOTA
DEPARTMENT OF TRANSPORTATION

RIPRAP AT CSP OUTLETS

SPECIFICATION REFERENCE
3123
3122
3601
3733
2511

STANDARD PLATE NO.
3134D