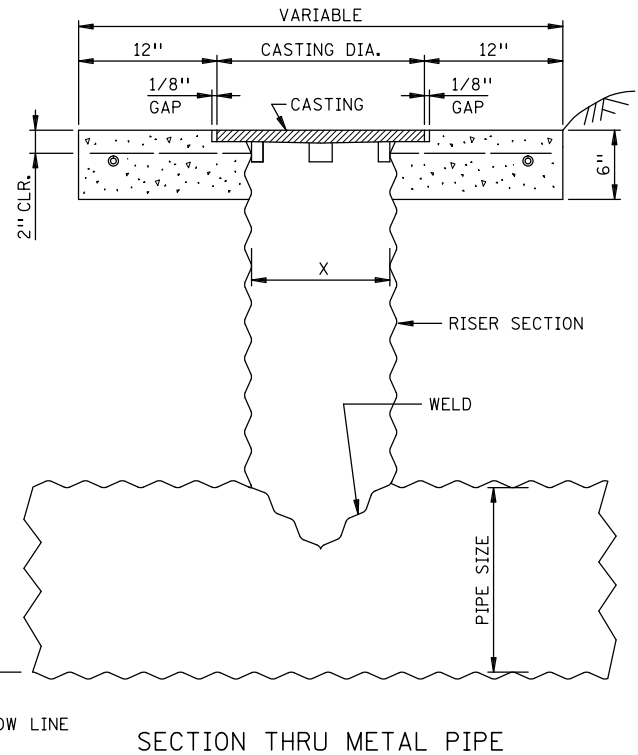
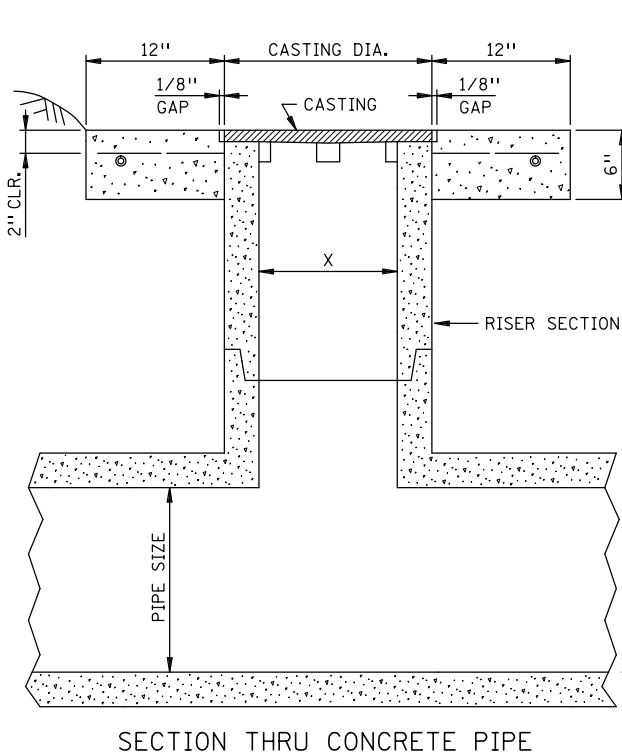


PIPE SIZE	CASTING NO.	X
6"	010-6	6"
8"	010-8	8"
10"	010-10	10"
12"	010-12	12"
15"	010-15	15"
18"	010-18	18"
21"	010-21	21"
24"	010-24	24"
27"	010-27	27"
30"	010-30	30"



**NOTES:**

WHEN CONNECTING ONE TYPE OF PIPE TO ANOTHER, THE JOINT SHALL BE LAPPED PROPERLY AND CEMENTED WITH CONCRETE OR BY OTHER APPROVED METHOD.

WHEN DROP INLET IS AT BEGINNING OR END OF DRAINAGE LINE AND A T-OR DOUBLE T-SECTION IS USED, THE ABANDONED ENDS ARE TO BE PLUGGED WITH CONCRETE OR OTHER APPROVED METHOD.

USE CASTING FROM STD. PLATE 4150.

OTHER APPROVED PIPES MAY BE USED.

DESIGN DI - ( CONCRETE )  
DESIGN DI - ( METAL )

APPROVED Oct. 1, 1966

*W. A. Ebern*

ASSISTANT COMMISSIONER  
ENGINEERING STANDARDS

STATE OF MINNESOTA  
DEPARTMENT OF TRANSPORTATION

DROP INLETS OR CATCH BASINS

SPECIFICATION  
REFERENCE  
2506

REVISED  
11-12-2013 M.J.E.

STANDARD  
PLATE  
NO.

4025B