




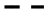




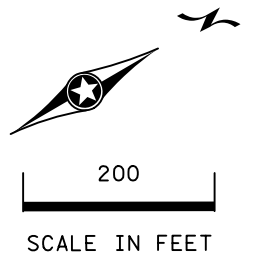
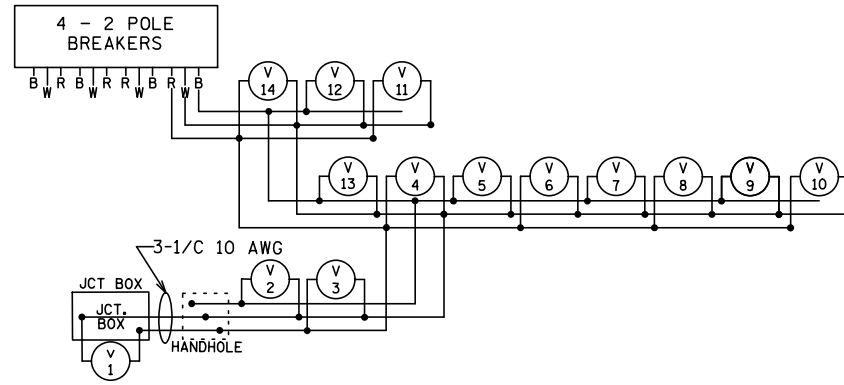


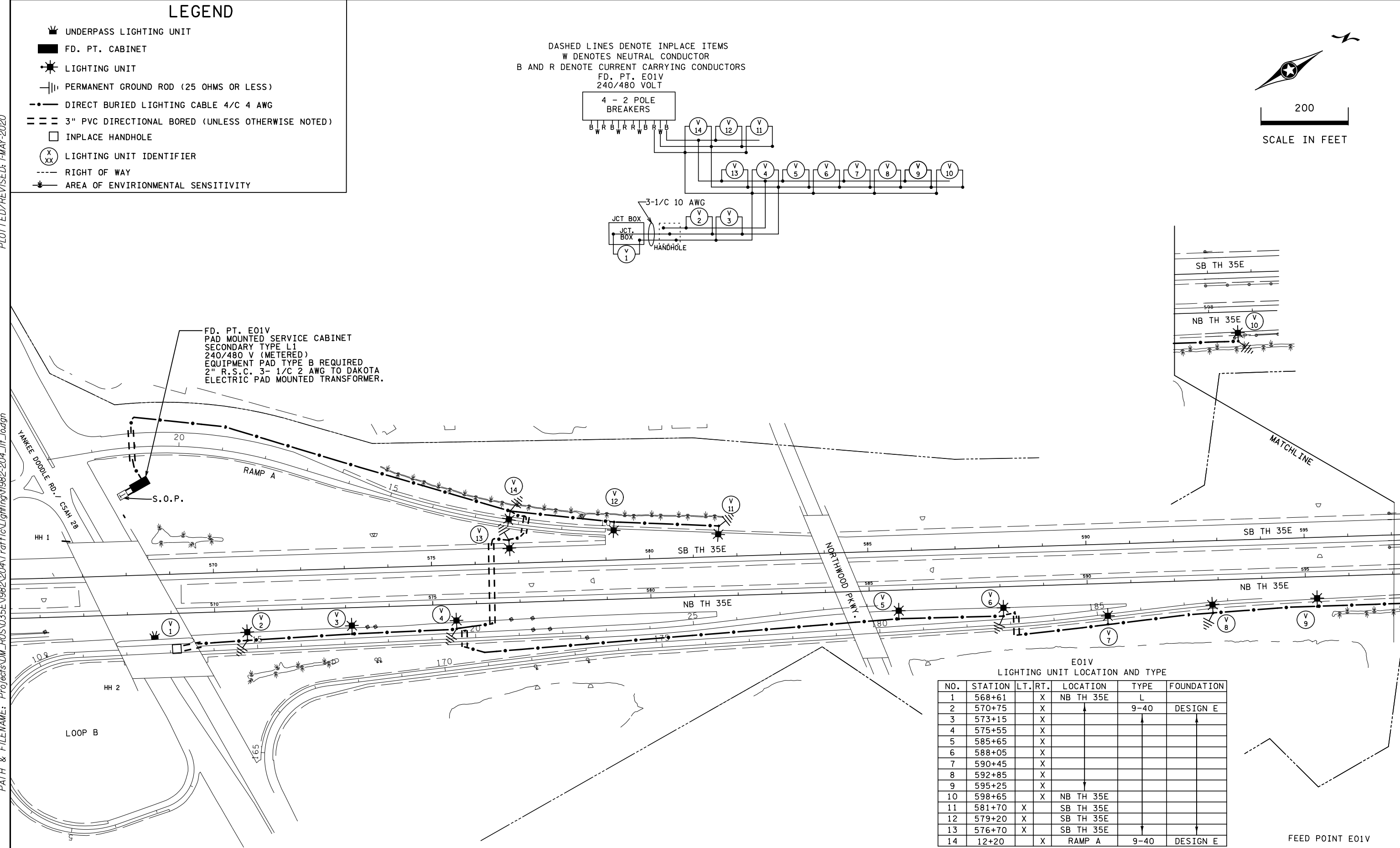
LEGEND

-  UNDERPASS LIGHTING UNIT
-  FD. PT. CABINET
-  LIGHTING UNIT
-  PERMANENT GROUND ROD (25 OHMS OR LESS)
-  DIRECT BURIED LIGHTING CABLE 4/C 4 AWG
-  3" PVC DIRECTIONAL BORED (UNLESS OTHERWISE NOTED)
-  INPLACE HANDHOLE
-  LIGHTING UNIT IDENTIFIER
-  RIGHT OF WAY
-  AREA OF ENVIRONMENTAL SENSITIVITY

DASHED LINES DENOTE INPLACE ITEMS
 W DENOTES NEUTRAL CONDUCTOR
 B AND R DENOTE CURRENT CARRYING CONDUCTORS
 FD. PT. E01V
 240/480 VOLT



FD. PT. E01V
 PAD MOUNTED SERVICE CABINET
 SECONDARY TYPE L1
 240/480 V (METERED)
 EQUIPMENT PAD TYPE B REQUIRED
 2" R.S.C. 3- 1/C 2 AWG TO DAKOTA
 ELECTRIC PAD MOUNTED TRANSFORMER.



E01V
LIGHTING UNIT LOCATION AND TYPE

NO.	STATION	LT.	RT.	LOCATION	TYPE	FOUNDATION
1	568+61		X	NB TH 35E	L	
2	570+75		X		9-40	DESIGN E
3	573+15		X			
4	575+55		X			
5	585+65		X			
6	588+05		X			
7	590+45		X			
8	592+85		X			
9	595+25		X			
10	598+65		X	NB TH 35E		
11	581+70	X		SB TH 35E		
12	579+20	X		SB TH 35E		
13	576+70	X		SB TH 35E		
14	12+20		X	RAMP A	9-40	DESIGN E

FEED POINT E01V

DISTRICT #: Metro
 PLOT NAME: 1982-204_Lit_10
 PATH & FILENAME: Projects\DM罗斯035E\1982-204\Traffic\Lighting\1982-204_Lit_10.dgn

BY	DATE	REVISIONS

DRAWN BY: PB CKD BY: JC

FEEDPOINT: E01V LOCATION: YANKEE DOODLE RD.
 METER ADDRESS: 500 YANKEE DOODLE RD. EAGAN

CERTIFIED BY *Michael P. Dubinsky* LIC. NO. 19863 DATE: 1-MAY-2020
LICENSED PROFESSIONAL ENGINEER

LIGHTING PLAN

STATE PROJ. NO. 1982-204 (T.H. 35E) SHEET NO. 10 OF 15 SHEETS