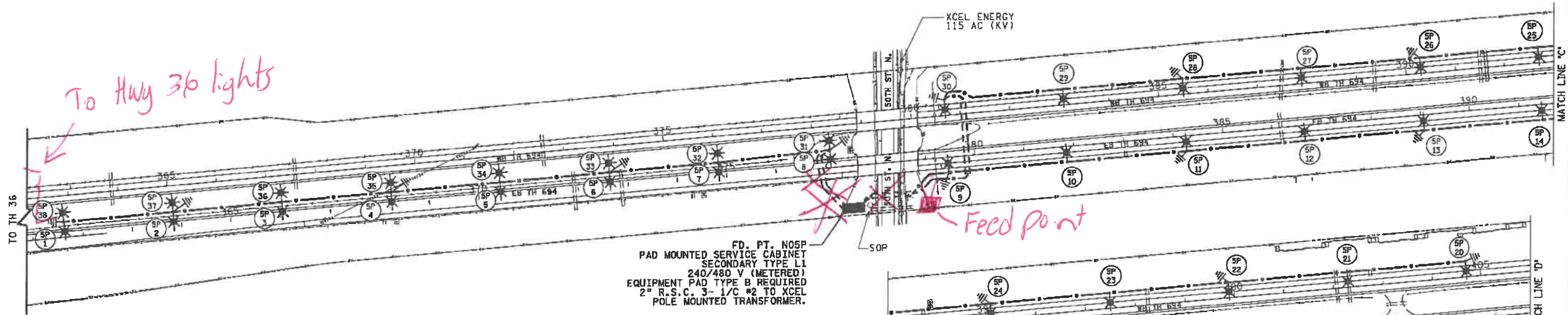
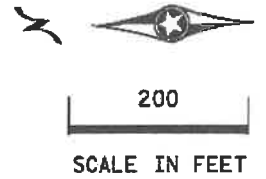
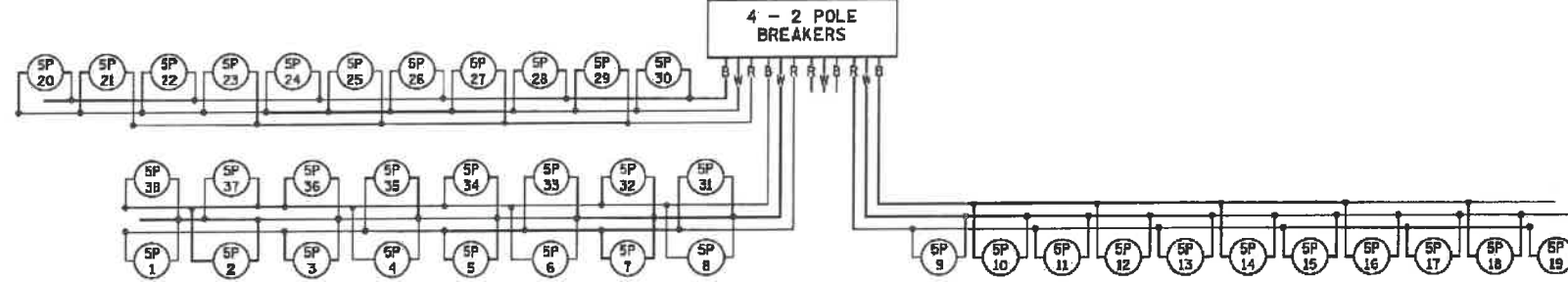


LEGEND

- LIGHTING UNIT
- PAD MOUNTED FD. PT. CABINET 240/480 VOLT
- DIRECT BURIED LIGHTING CABLE 4/C 4 AWG
- PERMANENT GROUND ROD (25 OHMS OR LESS)
- 3" PVC DIRECTIONAL BORED (UNLESS NOTED OTHERWISE)
- LIGHTING UNIT IDENTIFIER

W DENOTES NEUTRAL CONDUCTOR
 B AND R DENOTE CURRENT CARRYING CONDUCTORS
 FD. PT. NOSP
 240/480 VOLT



FD. PT. NOSP
 PAD MOUNTED SERVICE CABINET
 SECONDARY TYPE L1
 240/480 V (METERED)
 EQUIPMENT PAD TYPE B REQUIRED
 2" R.S.C. 3-1/2" TO XCEL
 POLE MOUNTED TRANSFORMER.

FEEPOINT NOSP
 LIGHTING UNIT LOCATION AND TYPE

NO.	STATION	LT.	RT.	LOCATION	TYPE	FOUNDATION	NO.	STATION	LT.	RT.	LOCATION	TYPE	FOUNDATION
1	362+90	X		EB TH 694	9D-40	DESIGN E	15	393+85		X	EB TH 694	9-40	DESIGN E
38							16	396+25		X			
2	365+11	X					17	398+65		X			
3							18	401+05		X			
37							19	403+46		X	EB TH 694		
36	367+30	X					20	404+70	X		WB TH 694		
4	369+51	X					21	402+30	X				
35							22	399+90	X				
5	371+72	X					23	397+50	X				
34							24	395+11	X				
6	373+93	X					25	392+70	X				
33							26	390+30	X				
7	376+13	X					27	387+90	X				
32							28	385+50	X				
8	378+37	X			9D-40		29	383+10	X				
31							30	380+70	X		WB TH 694	9-40	DESIGN E
9	379+45		X		9-40								
10	381+84		X										
11	384+26		X										
12	386+66		X										
13	389+05		X										
14	391+45	X		EB TH 694	9-40	DESIGN E							

BY	DATE	REVISIONS	FEEPOINT: NOSP	LOCATION: 50 TH ST	
			METER ADDRESS: 7299 50TH ST N. OAKDALE, MN 55128		
DRAWN BY: JC			CKD BY: PB		
			CERTIFIED BY: <i>Michael P. Selinsky</i>	LIC. NO. 19863	DATE: 8-JAN-2020
			LIGHTING PLAN		
			STATE PROJ. NO. 8286-90 (T.H. 694) SHEET NO. 8 OF 19 SHEETS		

PLOT NAME: B286-90.lit
 PATH & FILENAME: Projects\DM_R05\694\B286-90\Traffic\Lighting\B286-90.lit_judgn
 PLOTTED/REVISED: 8-JAN-2020

Electric Service Information Form For Roadway Lighting Systems

Project Number: **SP 8286-90**

Contractor: **Egan Company**

Date: **7/1/2021**

System	MN/DOT Feed Point Number	Meter Address	Transformer Primary Fuse Size and Type	Electric Utility Transformer Size In KVA	Transformer Internal Impedance Utility Fault Current	Transformer Secondary Voltage Line to Line and Line to Neutral	Size of Conductors In American Wire Gauge (AWG)	Length of conductors in feet from transformer connection to meter socket connection.			Calculated Available Fault Current at the line Side of the Meter Socket	Service Cabinet Main Circuit Breaker Size in AMPS
								L1 =	L2 =	Neutral		
	N04J	1701 TH 694 White Bear Lake	NA	75KVA	14,800 A	120/240	#2 awg	L1 = 10	L2 = 10	Neutral 10	12,292	100 A
	N04X	2599 TH 694 White Bear Lake	NA	75KVA	14,800 A	240/480	#2 awg	L1 = 80	L2 = 80	Neutral 80	8,149	100 A
	N05E	3051 TH 694 Mahtomedi	NA	75KVA	14,800 A	240/480	#2 awg	L1 = 200	L2 = 200	Neutral 200	4,868	100 A
	N05P	7299 50th St N Oakdale	NA	75KVA	14,800 A	240/480	#2 awg	L1 = 20	L2 = 20	Neutral 20	12,292	100 A
	N05S	7301 40th St N Oakdale	NA	75KVA	14,800 A	240/480	#2 awg	L1 = 45	L2 = 45	Neutral 45	10,143	100 A

NEC Article 110.24

12-SL

S.P. 8286-90 (TH 694)
LIGHTING SYSTEM
JANUARY 6, 2020