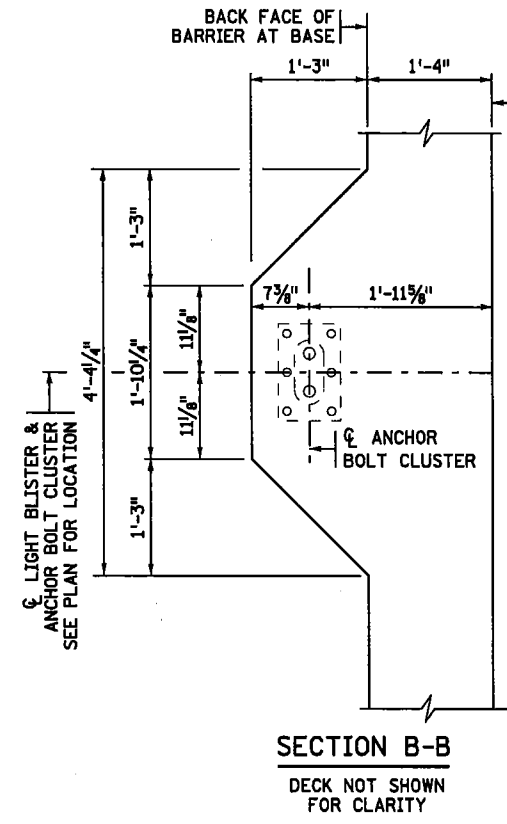
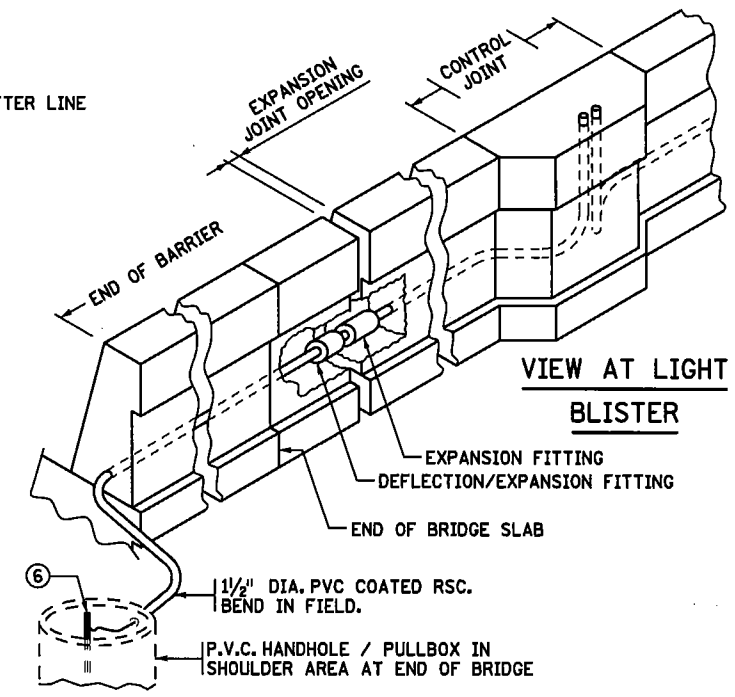


LIGHT POLE ANCHORAGE ON TYPE S BARRIER



SECTION B-B
DECK NOT SHOWN FOR CLARITY

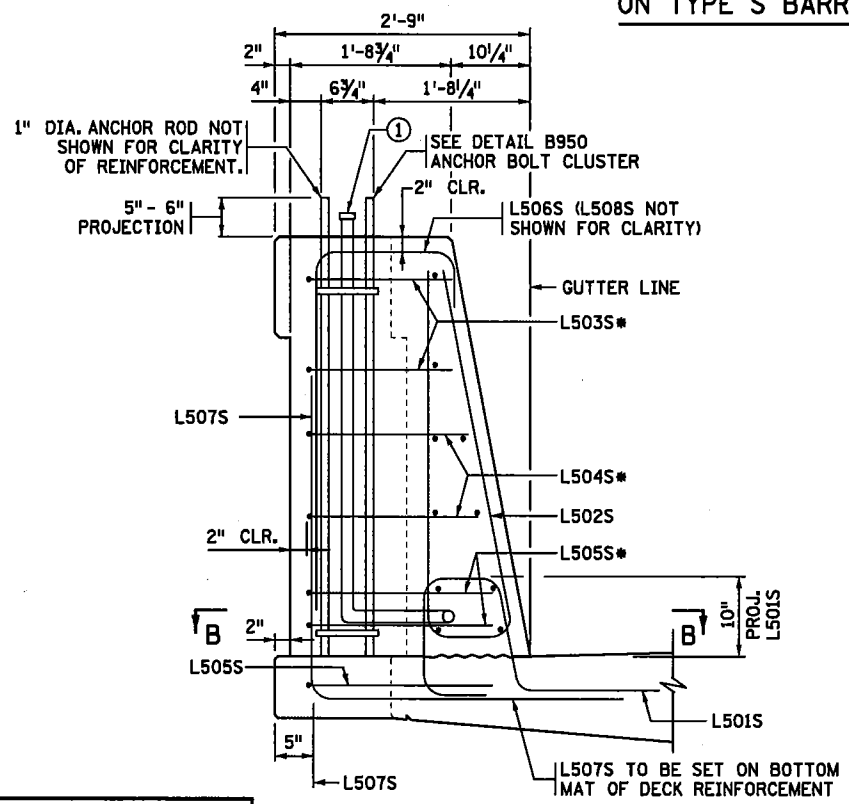


VIEW AT END OF BRIDGE
APPROACH SLAB NOT SHOWN. EXPANSION JOINT SHOWN.

- GENERAL NOTES**
- BOND AND GROUND THE CONDUIT SYSTEM (LIGHTING) IN ACCORDANCE WITH THE APPLICABLE PORTIONS OF SPEC. 2545.3.R.
 - EXTEND THE 1/2" DIA. PVC COATED RIGID STEEL CONDUIT 3" ABOVE THE BARRIER AND INSTALL CAP.
 - SEE CONCRETE BARRIER SHEETS FOR TYPICAL BARRIER REINFORCEMENT.
 - BARs SHOWN ARE FOR ONE LIGHT BLISTER.
 - WRAP PER SPEC. 2565.3.D.7.
 - PROVIDE COMBINATION DEFLECTION/EXPANSION FITTING PER SPEC. 3839.
 - PLACE GROUND ROD IN EACH HANDHOLE WITH EXOTHERMIC WELD FROM ROD TO WIRE.

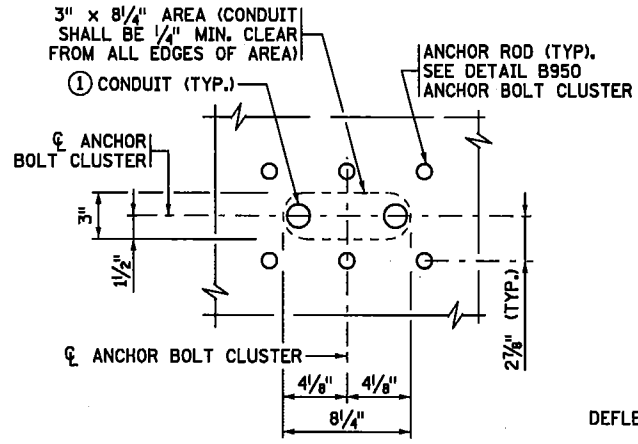
BILL OF REINFORCEMENT FOR BARRIER AT ONE LIGHT POLE

BAR NO.	LENGTH	SHAPE	LOCATION
L501S	3	5'-7"	BARRIER DOWEL
L502S	3	9'-2"	BARRIER VERTICAL
L503S	2	8'-9"	LONGITUDINAL TIE
L504S	2	9'-7"	LONGITUDINAL TIE
L505S	3	10'-5"	LONGITUDINAL TIE
L506S	4	6'-2"	VERTICAL TIE
L507S	4	6'-8"	VERTICAL DOWEL
L508S	2	5'-8"	VERTICAL TIE

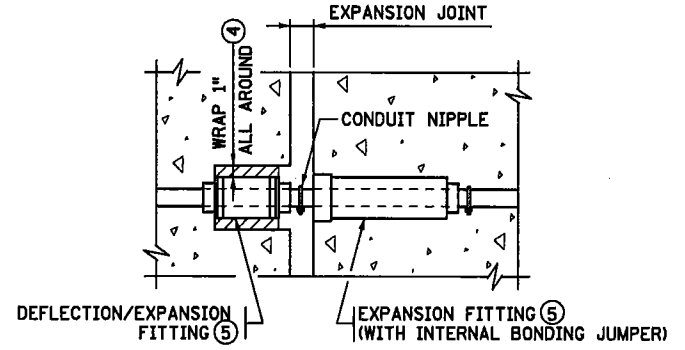


SECTION A-A

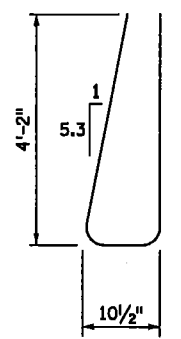
* L503S, L504S, L505S ARE SPACED WITH BARRIER LONGITUDINAL REINFORCEMENT. SEE CONCRETE BARRIER SHEET FOR SPACING.



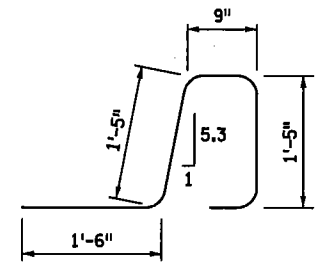
CONDUIT PLACEMENT DETAIL



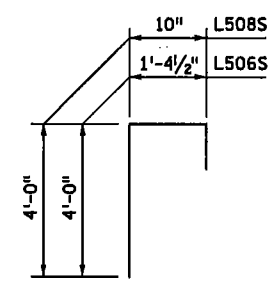
COMBINATION DEFLECTION/EXPANSION FITTING
IN BARRIER / SIDEWALK / CAST IN DECK



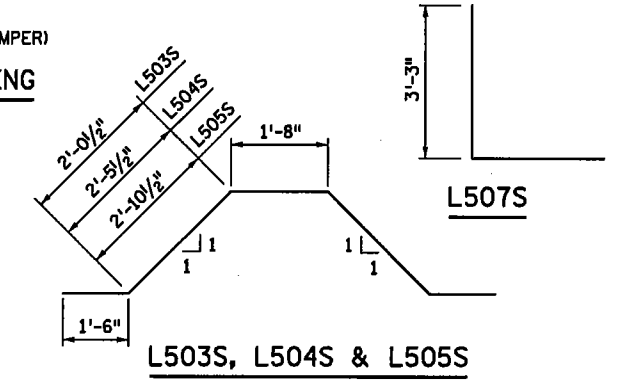
L502S



L501S



L506S, L508S



L503S, L504S & L505S

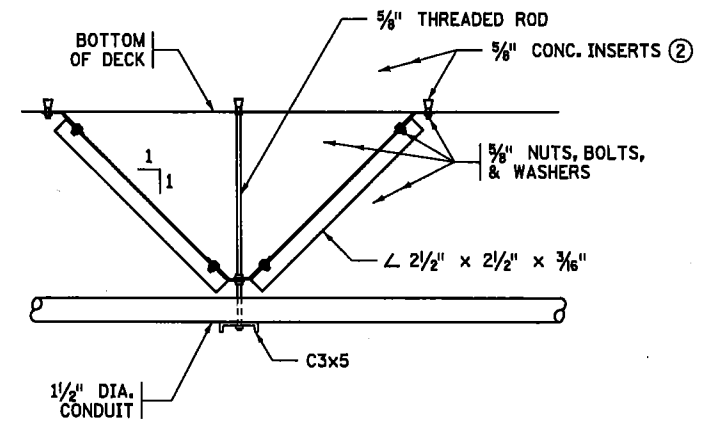
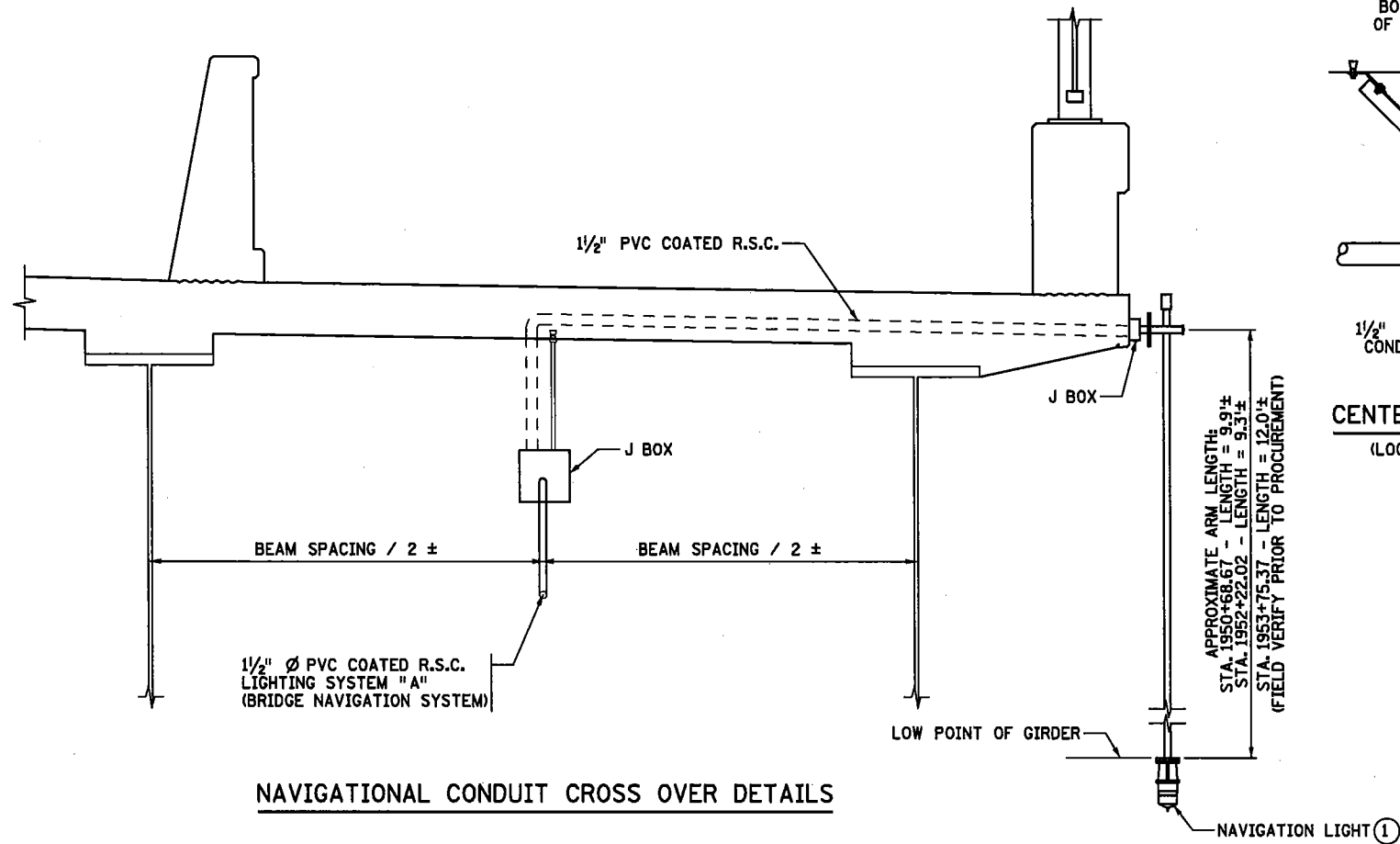
MODIFICATIONS:
UPDATE TO 54 TYPE S BARRIER
ALL REINFORCEMENT IS STAINLESS.

FIG. 5-397.406(B) MOD.

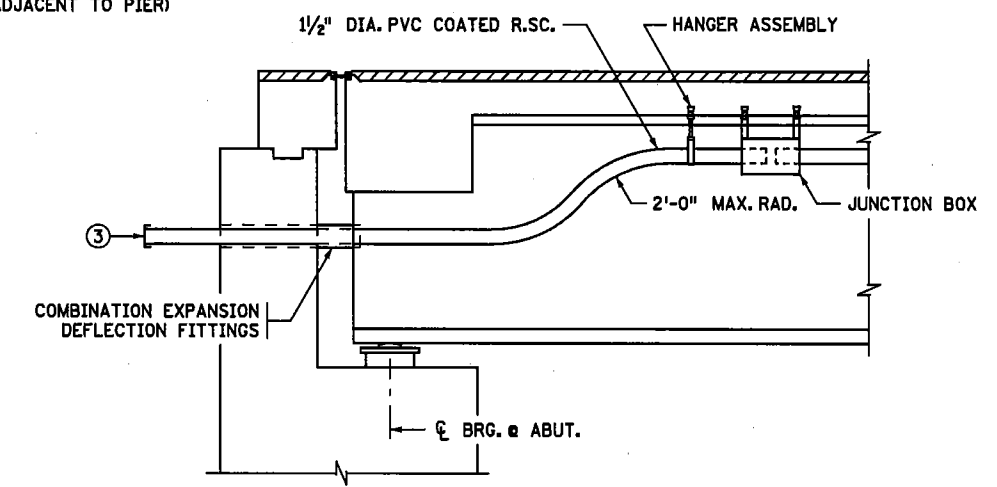
Plotted By: P0007740
Date Plotted: 11-DEC-2018
Time Plotted: 12:35:42 PM
Pen Tablet: MNDOT-1p10t.pen
File Path: 093_27W38_ConduitSystem.dct.dgn

REVISION:
APPROVED: AUGUST 24, 2016
Kevin Western
STATE BRIDGE ENGINEER

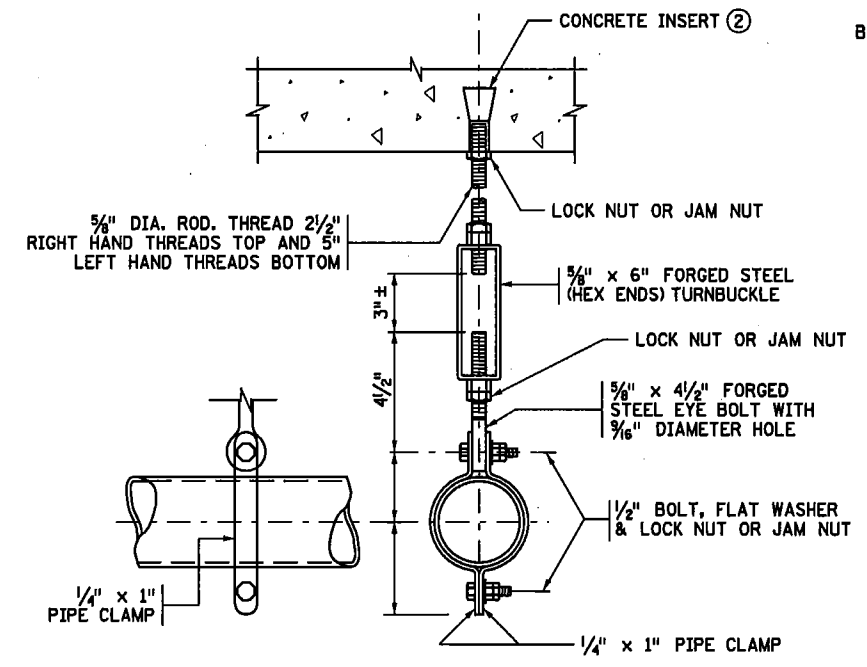
REV. NO.	DATE	REVISION DESCRIPTION	APPR.	AMES TEAM PARSONS	MNDOT ACCEPTANCE 12/18/18	CERTIFIED BY: BRADLEY J. BERG LICENSED PROFESSIONAL ENGINEER DATE: 12/13/18 LIC. NO. 46696	TITLE: CONDUIT SYSTEM (LIGHTING) 54" TYPE S CONCRETE BARRIER BLISTER, WITHOUT WEARING COURSE	DES: BJB CHK: AMP	DR: BJB CHK: AMP	APPROVED:	BRIDGE NO. 27W38
								SHEET NO. 93 OF 119 SHEETS			



CENTERING DEVICE DETAIL - SIDE VIEW
(LOCATED ONLY ON A HANGER ADJACENT TO PIER)

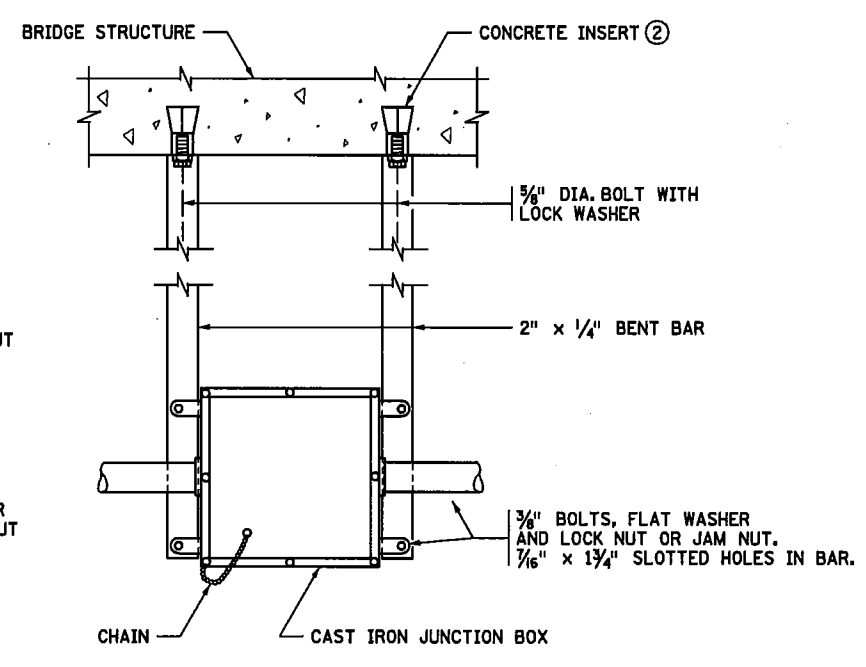


LONGITUDINAL SECTION
(FOR BRIDGE NAVIGATION LIGHT SYSTEM)



HANGER ASSEMBLY

EACH HANGER ASSEMBLY SHALL CONSIST OF CONCRETE INSERT, 5/8" DIA. ROD, PIPE CLAMPS, NUTS, BOLTS, WASHERS, TURNBUCKLE AND EYE BOLT



JUNCTION BOX DETAILS

GENERAL NOTES

- RODS, EYE BOLTS AND PIPE CLAMPS SHALL COMPLY WITH SPEC. 3313, TYPE I.
- TURNBUCKLES AND EYE BOLTS SHALL COMPLY WITH A.S.T.M. A235 CLASS A MINIMUM REQUIREMENTS.
- FLAT BARS AND ANCHORAGES SHALL COMPLY WITH SPEC. 3306.
- CONCRETE INSERTS SHALL BE APPROVED TYPE MALLEABLE IRON, MATERIAL AS PER SPEC. 3324, GRADE 35018. TAP AFTER GALVANIZING.
- GALVANIZE BOLTS, NUTS, WASHERS, TURNBUCKLES, RODS, EYE BOLTS, AND INSERTS AS PER SPEC. 3392. GALVANIZE OTHER MATERIAL AS PER SPEC. 3394 AFTER FABRICATION.
- PIPE SLEEVES SHALL COMPLY WITH SPEC. 3362.
- ① FOR LIGHT TYPE AND ADDITIONAL DETAILS SEE SHEET 91.
- ② SPACE INSERTS AT 10'-0" MAXIMUM CENTERS.
- ③ CAP ENDS.

MODIFICATIONS:
REMOVE UNUSED DETAILS.
ADD NAVIGATION LIGHT DETAILS.

FIG. 5-397.402 MOD.

Plotted By: P0007740
 Date Plotted: 01-NOV-2018
 Time Plotted: 2:31:58 PM
 Pen Table: MNDOT-IPLOT.PEN
 File Path: 094_27W38_ConduitDetails.dgn

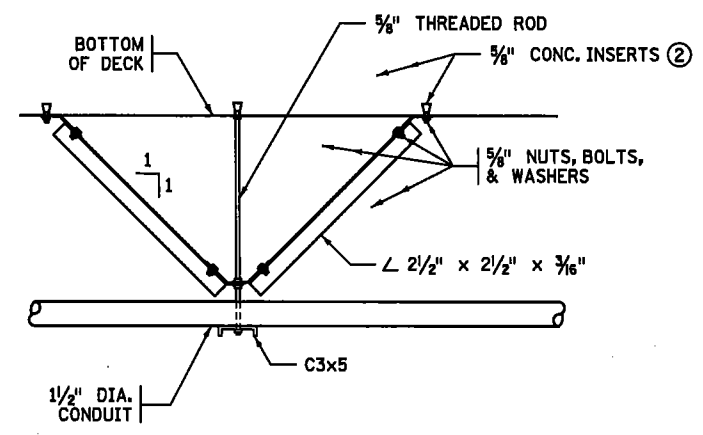
REVISION: 05-24-2012
 APPROVED: SEPTEMBER 26, 2003
David C. Halperin
 STATE BRIDGE ENGINEER

DES: BJB	DR: BJB	APPROVED:	BRIDGE NO.
CHK: AMP	CHK: AMP		27W38
SHEET NO. 94 OF 119 SHEETS			

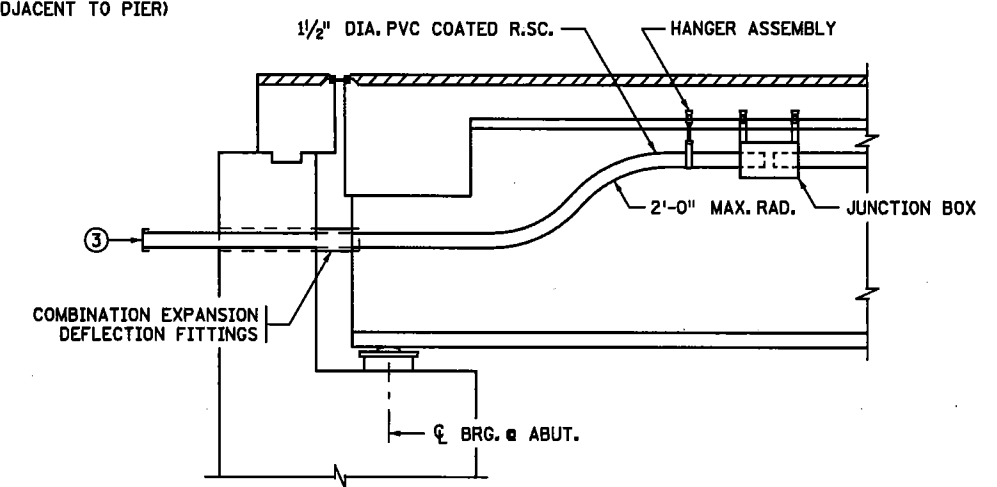


MNDOT ACCEPTANCE
 BY: *John J. Kelly* 12/18/18
 SIGNATURE DATE
 CERTIFIED *Bradley J. Berg* 12/13/18
 BY: LICENSED PROFESSIONAL ENGINEER DATE
 NAME: BRADLEY J. BERG LIC. NO. 46696

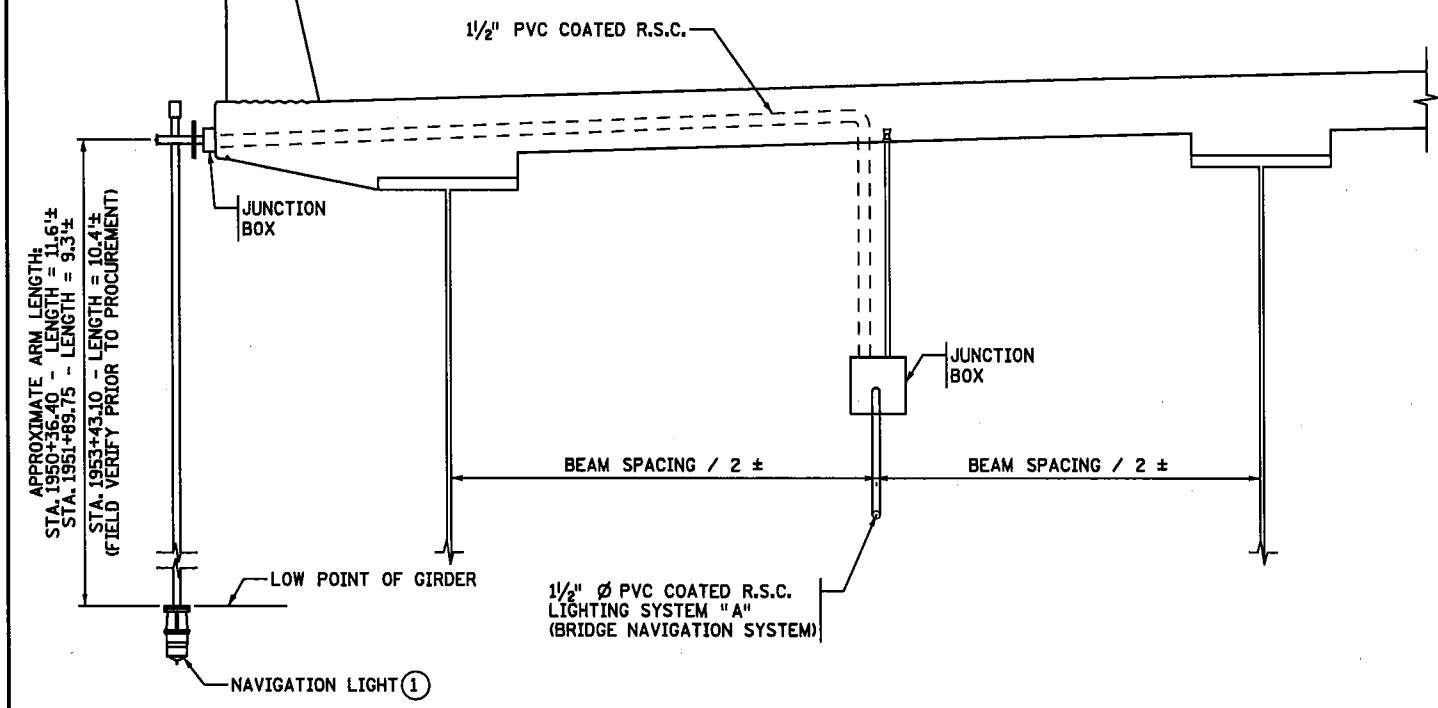
TITLE: CONDUIT DETAILS



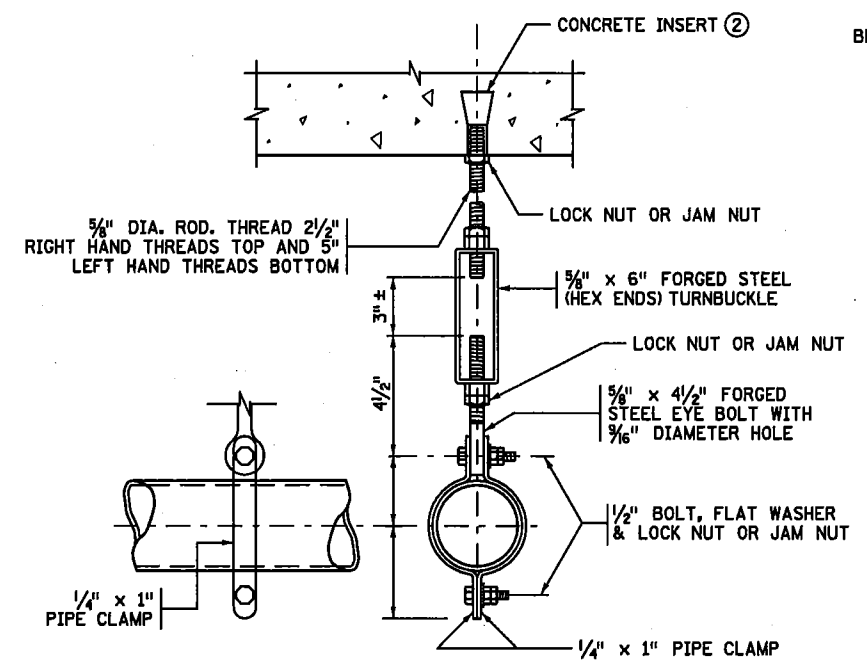
CENTERING DEVICE DETAIL - SIDE VIEW
(LOCATED ONLY ON A HANGER ADJACENT TO PIER)



LONGITUDINAL SECTION
(FOR BRIDGE NAVIGATION LIGHT SYSTEM)

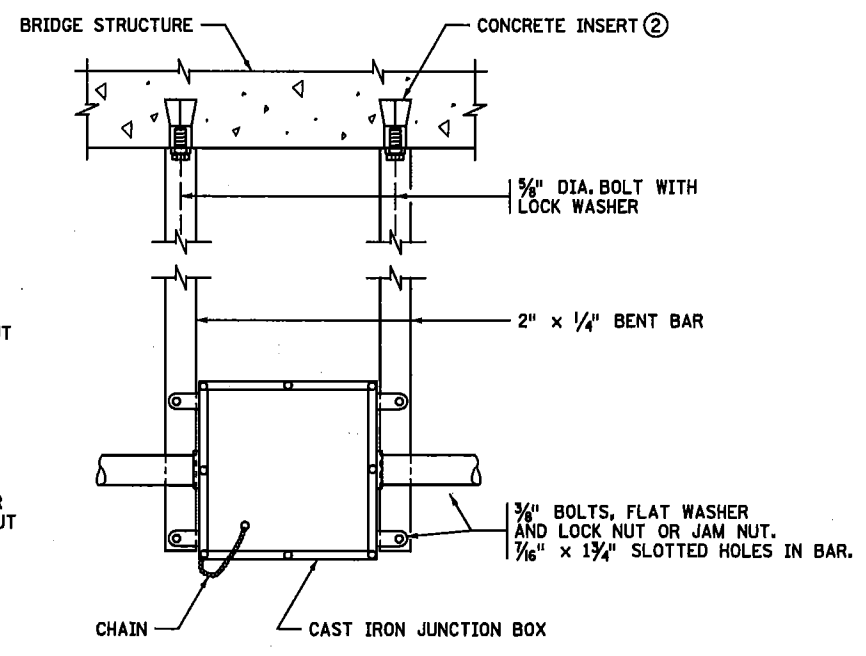


NAVIGATIONAL CONDUIT CROSS OVER DETAILS



HANGER ASSEMBLY

EACH HANGER ASSEMBLY SHALL CONSIST OF CONCRETE INSERT, 5/8" DIA. ROD, PIPE CLAMPS, NUTS, BOLTS, WASHERS, TURNBUCKLE AND EYE BOLT



JUNCTION BOX DETAILS

GENERAL NOTES

- RODS, EYE BOLTS AND PIPE CLAMPS SHALL COMPLY WITH SPEC. 3313, TYPE I.
- TURNBUCKLES AND EYE BOLTS SHALL COMPLY WITH A.S.T.M. A235 CLASS A MINIMUM REQUIREMENTS.
- FLAT BARS AND ANCHORAGES SHALL COMPLY WITH SPEC. 3306.
- CONCRETE INSERTS SHALL BE APPROVED TYPE MALLEABLE IRON. MATERIAL AS PER SPEC. 3324, GRADE 35018. TAP AFTER GALVANIZING.
- GALVANIZE BOLTS, NUTS, WASHERS, TURNBUCKLES, RODS, EYE BOLTS, AND INSERTS AS PER SPEC. 3392. GALVANIZE OTHER MATERIAL AS PER SPEC. 3394 AFTER FABRICATION.
- PIPE SLEEVES SHALL COMPLY WITH SPEC. 3362.
- ① FOR LIGHT TYPE AND ADDITIONAL DETAILS SEE SHEET 88.
- ② SPACE INSERTS AT 10'-0" MAXIMUM CENTERS.
- ③ CAP ENDS.

MODIFICATIONS:
REMOVE UNUSED DETAILS.
ADD NAVIGATION LIGHT DETAILS.

FIG. 5-397.402 MOD.

Plotted By: P008395d
 Date Plotted: 18-MAR-2019
 Time Plotted: 1:57:02 PM
 Pen Table: Mndot-plot.pen
 File Path: 090-27W39_Conduit+Detail1.s.dwg

REVISION: 05-24-2012
 APPROVED: SEPTEMBER 26, 2003
Daniel A. Henson
 STATE BRIDGE ENGINEER

REV. NO.	DATE	REVISION DESCRIPTION	APPR.	AMES TEAM	MNDOT ACCEPTANCE	CERTIFIED BY: <i>Bradley J. Berg</i> 4/24/19 LICENSED PROFESSIONAL ENGINEER DATE	TITLE: CONDUIT DETAILS	DES: BJB CHK: AMP	DR: BJB CHK: AMP	APPROVED:	BRIDGE NO. 27W39
				PARSONS	<i>John J. Kelly</i> 4/30/19	NAME: BRADLEY J. BERG LIC. NO. 46696					SHEET NO. 90 OF 99 SHEETS