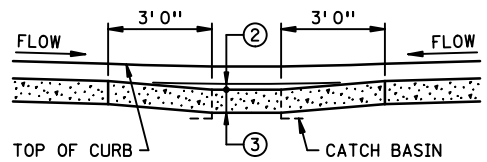
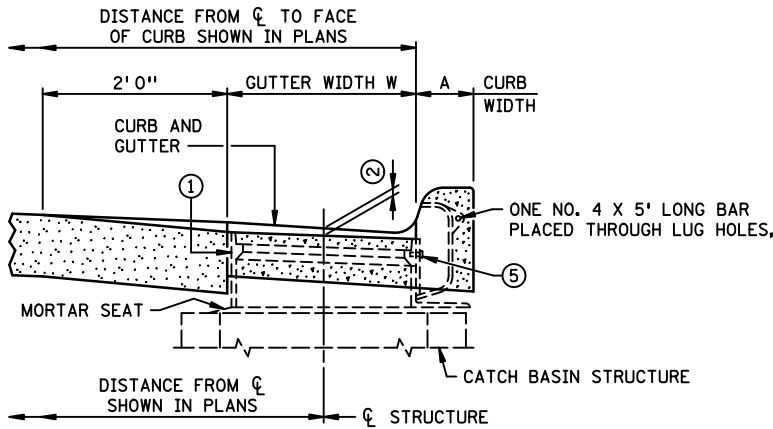


DESIGN D CONCRETE CURB & GUTTER

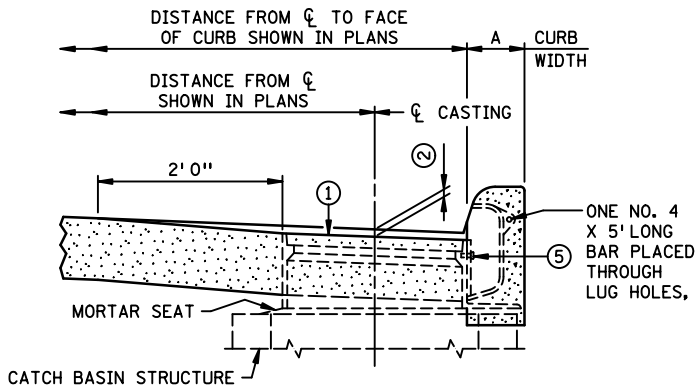


DEPRESSION (SUMP) IN FLOW LINE AT CATCH BASIN LOCATION



DESIGN B CONCRETE CURB & GUTTER

CURB BOX CASTINGS USED FOR ASSEMBLY
821B, 823A, 824, 831A & 833A



DESIGN B CONCRETE CURB

NOTES:

- COMPENSATE FOR TILT BY VARYING THE DEPTH OF MORTAR SEAT.
- DETAILS ARE TYPICAL AND APPLY TO INSTALLATION OF BOTH TELESCOPING AND NON-TELESCOPING CASTINGS. REFER TO PLANS FOR SPECIFIC ITEMS REQUIRED.
- ALL REINFORCEMENT REQUIRED IS INCIDENTAL, WITH NO DIRECT PAYMENT.
- ① CATCH BASIN CASTING.
- ② ON ALL APPLICATIONS USE .10' SUMP. SUMP SHALL BE MEASURED AT CENTER OF CASTING.
- ③ SAME THICKNESS AS ADJACENT PAVEMENT OR GUTTER.
- ④ THREE NO. 4 HORIZONTAL BARS 5' 0" LONG CENTERED ABOUT CL OF CASTING.
- ⑤ CURB INLET CASTING SHALL BE FASTENED TEMPORARILY TO FRAME CASTING WITH 2 CAP SCREWS, DURING CURB CONSTRUCTION. CAP SCREWS MUST BE REMOVED AFTER CURB HAS HARDENED.

APPROVED APRIL 23, 1996
Gerald J. Rodenbeck
 STATE DESIGN ENGINEER

STATE OF MINNESOTA
 DEPARTMENT OF TRANSPORTATION
**INSTALLATION OF
 CATCH BASIN CASTINGS
 CONCRETE CURB & GUTTER**

SPECIFICATION
 REFERENCE
 2531
 REVISED
 3-22-2013 M.J.E.

STANDARD
 PLATE
 NO.
7111J