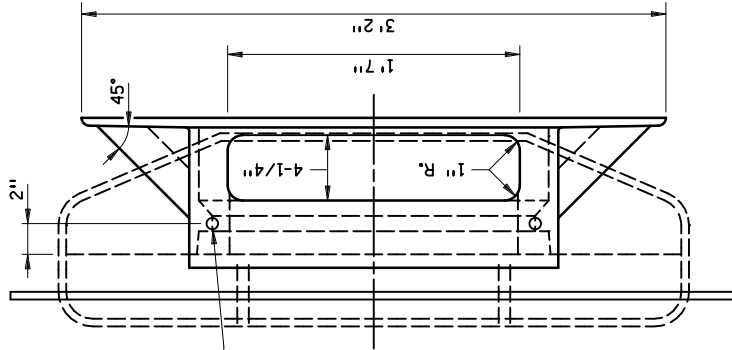
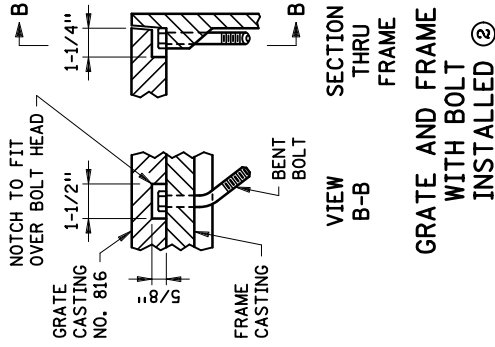


TOP VIEW



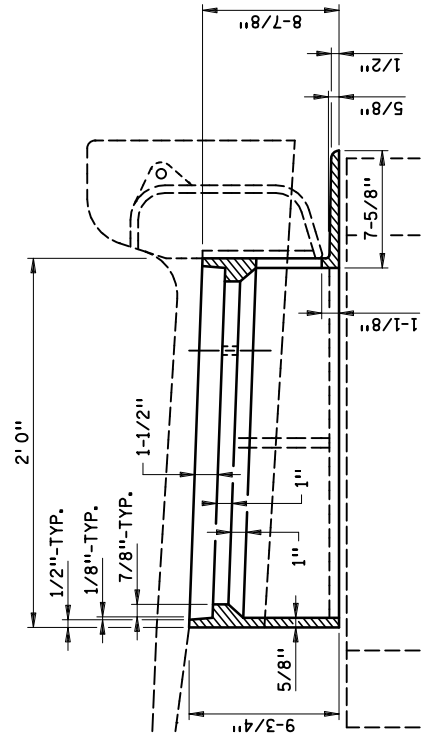
END VIEW



CASTINGS USED FOR ASSEMBLY	
GRATE FRAME	NO. 802A (4129)
GRATE	NO. 811 (4151), 814A (4152), 815 (4153), 816 (4154)
CURB BOX ①	NO. 823A (4160) OR 833A (4160)

NOTES:

- USE 1/4" FILLETS IN ALL CORNERS.
- SEE STANDARD PLATE 7111 FOR INSTALLATION REQUIREMENTS.
- ① APPLIES TO DESIGN B OR V CURB AND CURB AND GUTTER.
- ② AT LOCATIONS INDICATED IN TOP VIEW, PROVIDE 9/16" DIA. HOLES WHEN GRATE NO. 816 (4154) IS USED WITH THIS FRAME. FIELD PLACE 1/2" DIA. X 4" LONG GALV. BOLT IN UP STREAM SIDE AND BEND UNDERSIDE TO PREVENT REMOVAL. THIS WILL PREVENT GRATE NO. 816 (4154) FROM BEING PLACED IN WRONG DIRECTION AND NOT BEING BICYCLE SAFE.



SECTION A-A

GRATE FRAME CASTING NO. 802A

APPROVED MARCH 14, 1996

*Gerald J. Robinson*

STATE DESIGN ENGINEER

STATE OF MINNESOTA  
DEPARTMENT OF TRANSPORTATION

CATCH BASIN FRAME CASTING  
FOR SQUARE GRATE

SPECIFICATION  
REFERENCE

2506

REVISED  
3-22-2013 M.J.E.

STANDARD  
PLATE  
NO.

4129G