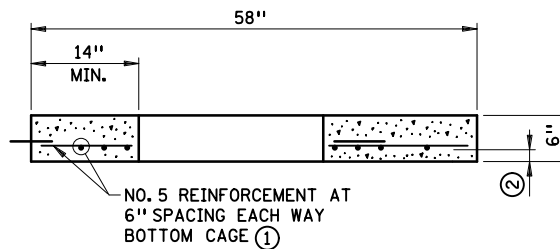


PLAN



SECTION A-A

NOTES:

- AASHTO HS 25 LOADING.
- MAXIMUM FILL HEIGHT 8 FEET.
- THE NO. 4022 SHALL BE PERMANENTLY MARKED ON THE TOP OF THE COVER.
- EQUIVALENT STEEL AREAS IN WIRE MESH MAY BE USED.
- REINFORCEMENT PER SPEC. 3301, GRADE 60.
- TO BE USED WITH 4 FT. DIA. STRUCTURES ONLY.

- ① TOP CAGE NOT REQUIRED.
- ② 1-1/2" MINIMUM REINFORCEMENT CLEARANCE.

APPROVED MARCH 2, 1998
Delbert W. Godes
 STATE DESIGN ENGINEER

STATE OF MINNESOTA
 DEPARTMENT OF TRANSPORTATION
MANHOLE OR CATCH BASIN COVER
 3 FT. X 2 FT. OPENING
 FOR USE WITH OR WITHOUT TRAFFIC LOADS

SPECIFICATION
 REFERENCE
 2506
 REVISED
 3-22-2013 M.J.E.

STANDARD
 PLATE
 NO.
4022A