

PLOTTED/REVISED: 21-MAY-2018

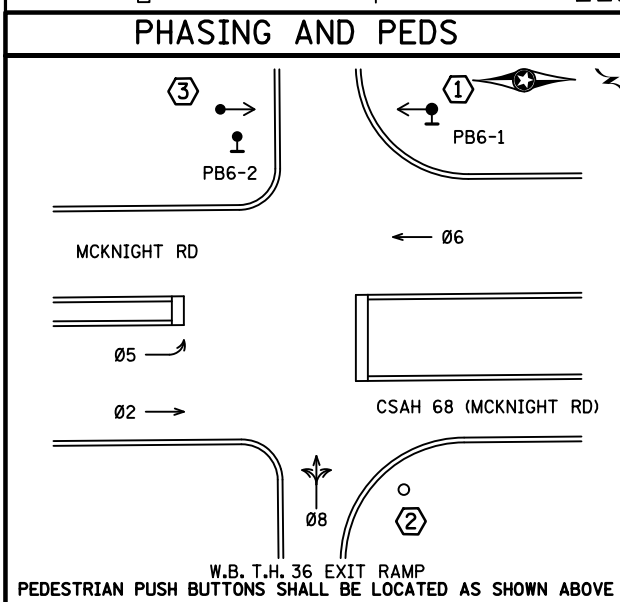
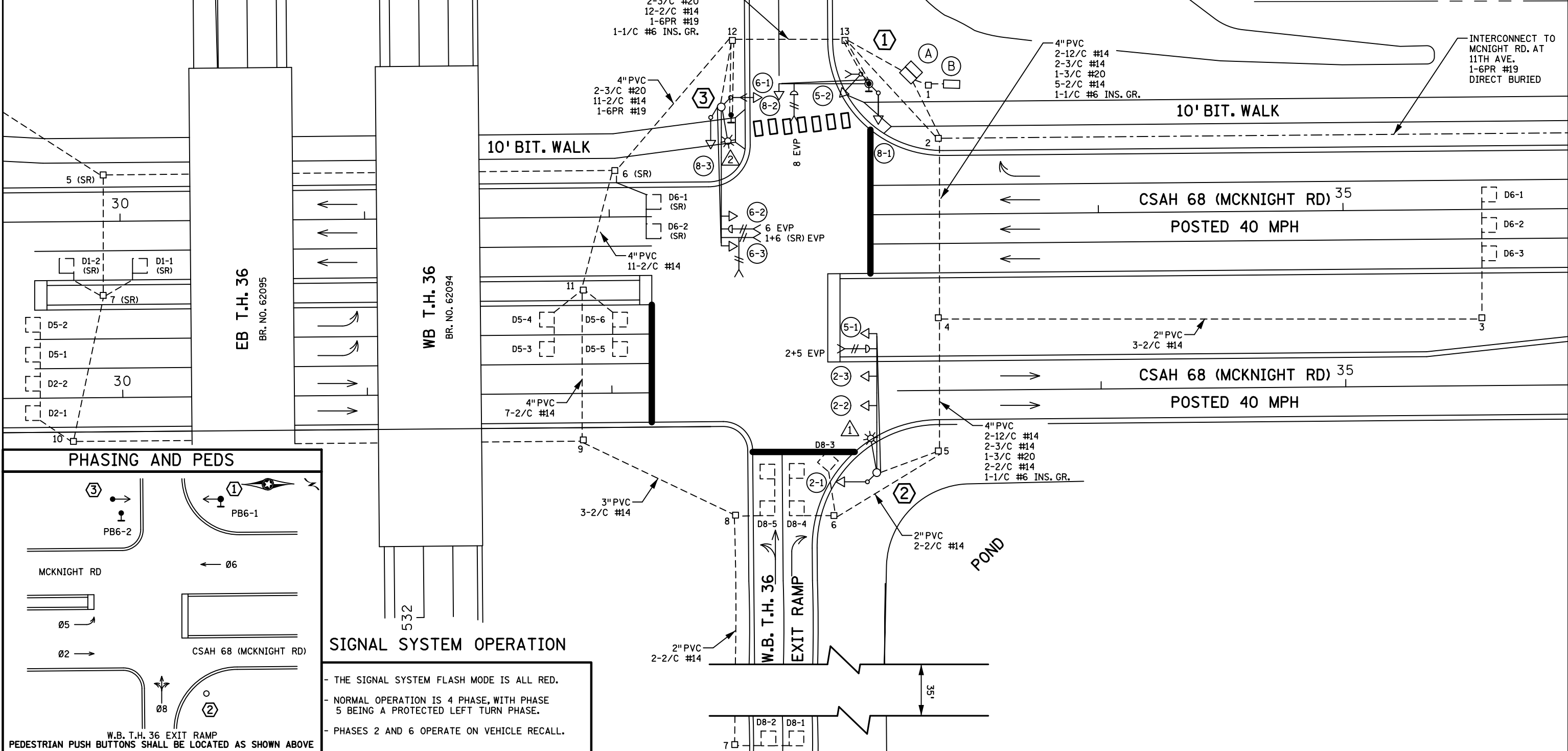
DISTRICT #: Metro
PLOT NAME: Layout
PATH & FILENAME: Projects\DM_POS\036\0000\Traffic\Signal\38544\T 38544_sgl.dgn

SIGNAL HEAD CHART					
FACE	R	Y	G	G	
2-1, 2-2, 2-3	○	○	○		
5-1, 5-2	◀	◀	◀		
6-1, 6-2, 6-3	○	○	○		
8-1	○	○	○		
8-2	○	○	○	◀	
8-3	○	◀	◀		

-ALL SIGNAL INDICATIONS ARE 12" LED
-ALL SIGNAL FACES HAVE A BACKGROUND SHIELD
-ALL SIGNAL HEADS ARE BLACK POLYCARBONITE

LOOP DETECTOR CHART		
NUMBER	SIZE (FT)	LOCATION
D2-1, D2-2	6x6	250
D5-1, D5-2	6x6	250
D5-3, D5-4	6x6	40
D5-5, D5-6	6x6	10
D6-1, D6-2, D6-3	6x6	250
D8-1, D8-2	6x6	120
D8-3	6x6	0
D8-4, D8-5	2-6x6	5 & 20

-ALL LOOP DETECTORS SHALL BE PVC UNLESS NOTED OTHERWISE
-LOCATION: DISTANCE FROM CROSSWALK/STOP BAR IN FEET



SIGNAL SYSTEM OPERATION

- THE SIGNAL SYSTEM FLASH MODE IS ALL RED.
- NORMAL OPERATION IS 4 PHASE, WITH PHASE 5 BEING A PROTECTED LEFT TURN PHASE.
- PHASES 2 AND 6 OPERATE ON VEHICLE RECALL.

BY	DATE	REVISIONS
EJA	12-30-15	AS-BUILT OF SP 8825-507 APS UPDATES
JT3	05-18-18	APS PUSHBUTTON AND SIGN

SYSTEM ID: 38544 T.E.
METER ADDRESS: 2357 MCKNIGHT RD
MASTER ID: T.E.

INTERSECTION LAYOUT
T.H. 36 AT C.S.A.H. 68
(MCKNIGHT RD.) NORTH RAMPS
IN NORTH ST. PAUL, RAMSEY CO.

S.A.P. NO. _____ DRAWN BY: _____ CKD BY: _____ DATE: _____
CERTIFIED BY _____ LIC. NO. _____ DATE: _____
STATE PROJ. NO. (T.H. 36) SHEET NO. 1 OF 3 SHEETS

POLE NOTES

① S.B. STA. 33+07, 54' LT.
 PA90 POLE FOUNDATION
 (W/1" PVC STUB OUT & 5/8" x 15' GR. ROD)
 TYPE PA90-A-35
 1-ONE WAY SIGNAL AT 0'
 2-ONE WAY SIGNALS AT 45 & 225 DEG
 1-CD PED HEAD AT 45 DEG
 1-APS PB & SIGN (LT ARROW) PB6-1
 ONE WAY EVP DETECTOR
 AND CONFIRMATORY LIGHT (8)
 1-R9-3 SIGN (FACING POLE 2)
 1-R6-1L SIGN (ONE WAY)
 1-R6-1R SIGN (ONE WAY)
 1-TYPE D SIGN
 EXTEND INTO HH 13:
 3" PVC
 2-12/C #14
 1-3/C #14
 1-3/C #20
 1-2/C #14
 2-1/C #6 INS. GR.

② N.B. STA. 33+08, 33' RT.
 PA100 POLE FOUNDATION
 (W/1" PVC STUB OUT & 5/8" x 15' GR. ROD)
 TYPE A100-A-55-D40-12 (DAVIT AT 350 DEG)
 3-ONE WAY SIGNALS AT 0', 17' & 29'
 2-ONE WAY SIGNAL MOUNTED AT 45 & 225 DEG
 ONE WAY EVP DETECTOR AND
 CONFIRMATORY LIGHT (2+5)
 LUMINAIRE-250W HPS
 2-R9-3 SIGNS (FACING POLE 1 & SE CORNER)
 1-R6-1R SIGN (ONE WAY)
 1-TYPE D SIGN
 EXTEND INTO HH 5:
 3" NMC
 2-12/C #14
 2-3/C #14
 1-3/C #20
 1-1/C #6 INS. GR.

③ S.B. STA. 32+46, 45' LT.
 PA100 POLE FOUNDATION
 (W/1" PVC STUB OUT & 5/8" x 15' GR. ROD)
 TYPE PA100-A-55-D40-9 (DAVIT AT 350 DEG)
 2-ONE WAY SIGNALS OVERHEAD
 (0', AND 12' FROM END OF MAST ARM)
 2-ONE WAY SIGNALS MOUNTED AT 45 & 225 DEG
 1-CD PED HEAD AT 225 DEG
 TWO WAY 1-CHANNEL EVP DETECTOR
 (1+6 SR ADVANCE) MOUNTED AT 5'
 ONE WAY EVP DETECTOR AND
 CONFIRMATORY LIGHT (6)
 LUMINAIRE-250W HPS
 1-R9-3 SIGN (FACING SE CORNER)
 1-R6-1L SIGN (ONE WAY)
 2-TYPE D SIGN
 EXTEND INTO HH 12:
 3" PVC
 2-12/C #14
 2-3/C #14
 2-3/C #20
 1-1/C #6 INS. GR.
 PED PB STA
 1-APS PB & SIGN (RT ARROW) PB6-2
 EXTEND INTO HH 12:
 1" PVC
 1-2/C #14

Ⓐ S.B. STA. 33+23, 57' LT.
 EQUIPMENT PAD
 SERVICE CABINET
 CONTROLLER AND CABINET
 APS CONTROL UNIT
 4" PVC TO HH 2:
 2-12/C #14
 1-3/C #14
 1-3/C #20
 5-2/C #14
 1-6PR #19
 1-1/C #6 INS. GR.
 2" AND 3" PVC STUBBED OUT (CAPPED BOTH ENDS)
 3/4" PVC STUBBED OUT (CAPPED FOR TELEPHONE LINE)
 SERVICE CABINET TO CONTROLLER CABINET:
 2" PVC
 2-1/C #6
 1-1/C #6 INS. GR.
 SERVICE CABINET TO HH 1:
 2" PVC
 3-1/C #2
 SERVICE CABINET TO HH 2:
 2" PVC
 2-3/C #14
 HH 2 TO HH 13:
 2" PVC
 1-3/C #14
 4" PVC TO HH 13:
 4-12/C #14
 2-3/C #14
 3-3/C #20
 13-2/C #14
 1-6PR #19
 1-1/C #6 INS. GR.
 1-2/C #4

Ⓑ SOP-NORTH ST. PAUL UTILITIES
 EQUIPMENT PAD WITH TRANSFORMER
 2" PVC INTO HH 1:
 3-1/C #2

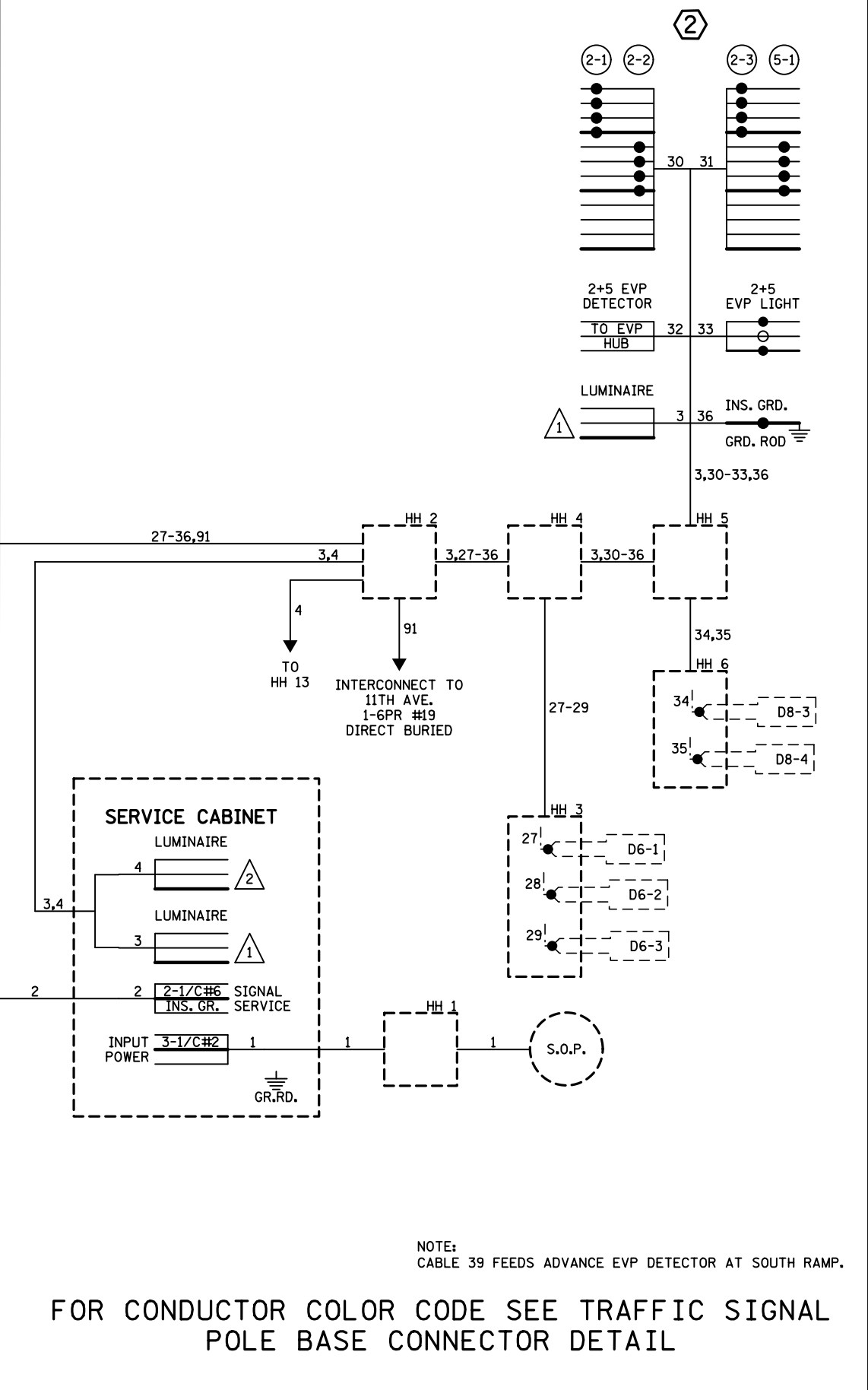
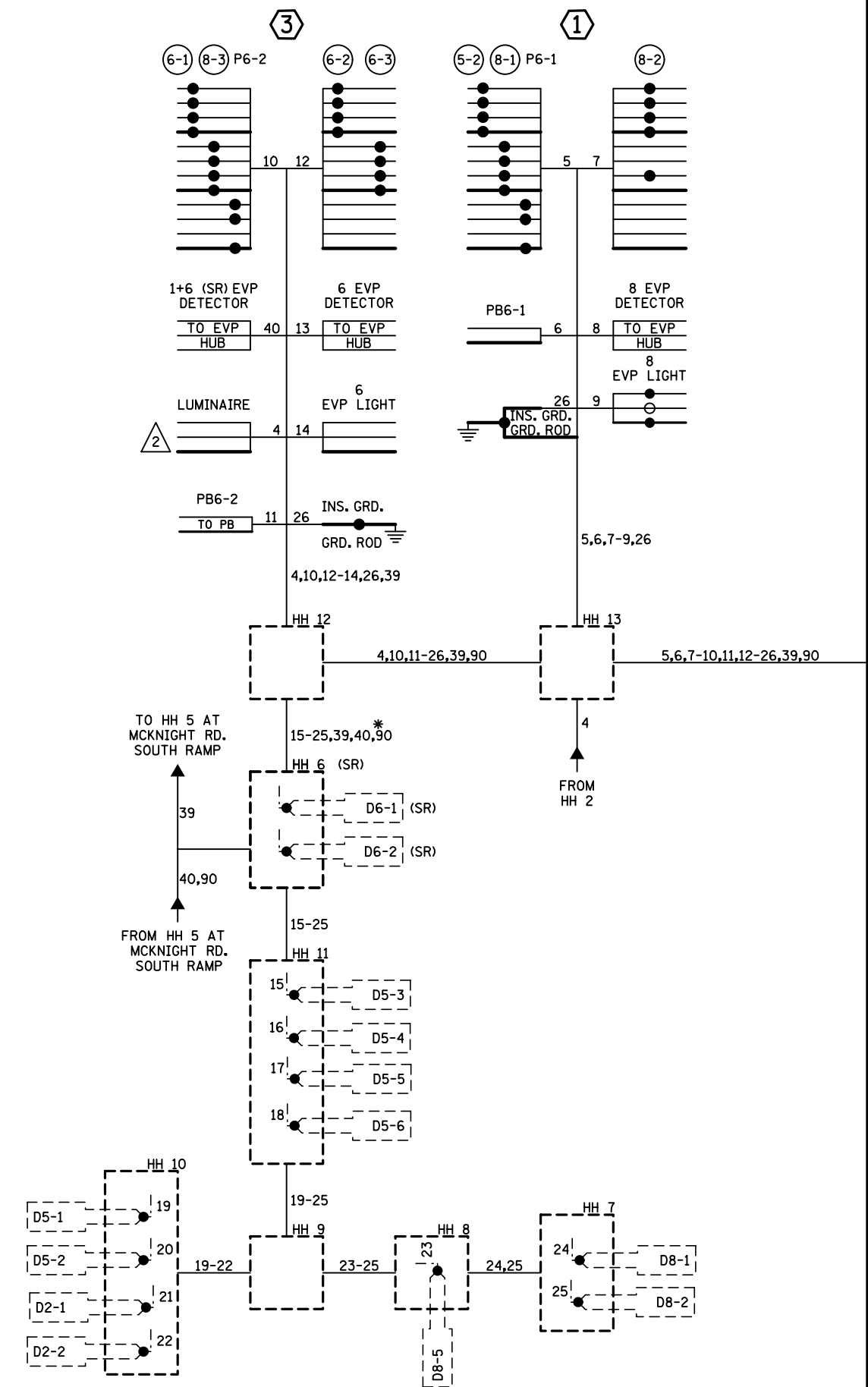
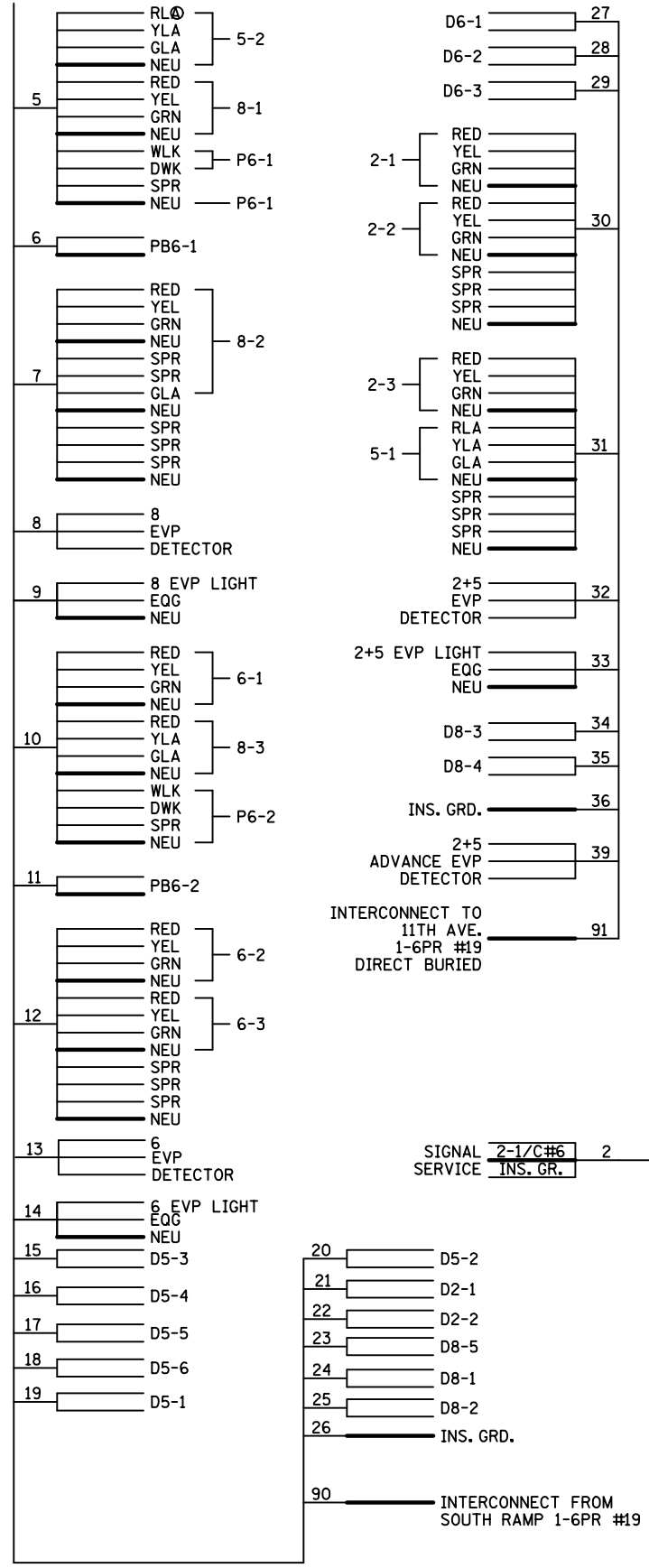
DISTRICT #: Metro
 PLOT NAME: Pole NBote
 PATH & FILENAME: Projects\DM罗斯0360000\Traffic\Signals\38544\T 38544_sgl.dgn
 PLOTTED/REVISED: 21-MAY-2018

BY	DATE	REVISIONS	SYSTEM ID: 38544	T.E.	S.A.P. NO.	DRAWN BY:	CKD BY:	DATE:
EJA	12-30-15	AS-BUILT OF SP 8825-507 APS UPDATES	METER ADDRESS: 2357 MCKNIGHT RD		CERTIFIED BY _____	LIC. NO. _____	DATE: _____	
JT3	05-18-18	APS PUSH BUTTONS AND SIGNS	MASTER ID:	T.E.	STATE PROJ. NO.	(T.H. 36)	SHEET NO. 2 OF 3 SHEETS	
			POLE & CABINET NOTES T.H. 36 AT C.S.A.H. 68 (MCKNIGHT RD.) NORTH RAMPS IN NORTH ST. PAUL, RAMSEY CO.					

PLOTTED/REVISED: 21-MAY-2018

DISTRICT #: Metro
 IPLOT NAME: Wiring
 PATH & FILENAME: Projects\DM_ROM\036\0000\Traffic\Signal\38544\T_38544_sgl.dgn

CONTROLLER CABINET



NOTE:
 CABLE 39 FEEDS ADVANCE EVP DETECTOR AT SOUTH RAMP.

FOR CONDUCTOR COLOR CODE SEE TRAFFIC SIGNAL
 POLE BASE CONNECTOR DETAIL

BY	DATE	REVISIONS
EJA	12-30-15	AS-BUILT OF SP 8825-507 APS UPDATES
JT3	052118	APS PUSH BUTTONS AND SIGNS

SYSTEM ID: 38544	T.E.
METER ADDRESS: 2357 MCKNIGHT RD	
MASTER ID:	T.E.

WIRING DIAGRAM
T.H. 36 AT C.S.A.H. 68
(MCKNIGHT RD.) NORTH RAMPS
IN NORTH ST. PAUL, RAMSEY CO.

S.A.P. NO.	DRAWN BY:	CKD BY:	DATE:
CERTIFIED BY _____	LIC. NO. _____	DATE: _____	
STATE PROJ. NO.	(T.H. 36)	SHEET NO. 3 OF 3 SHEETS	