

DISTRICT #: Metro
 PLOT NAME: Layout
 PATH & FILENAME: Projects\DM_R05\036\0000\Traffic\Signal\38543\T 38543.spl.dgn
 PLOTTED/REVISED: 22-MAY-2018

F & I:
 PED PB STATION
 1-APS PB AND SIGN (LT ARROW/XP86-2)
 EXTEND INTO HH 12:
 1' CONDUIT

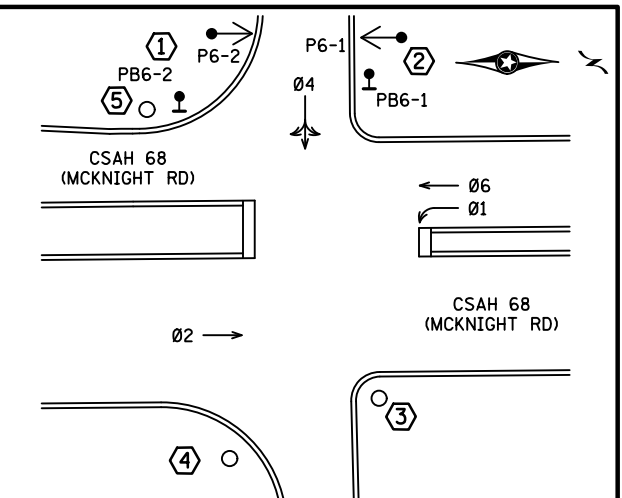
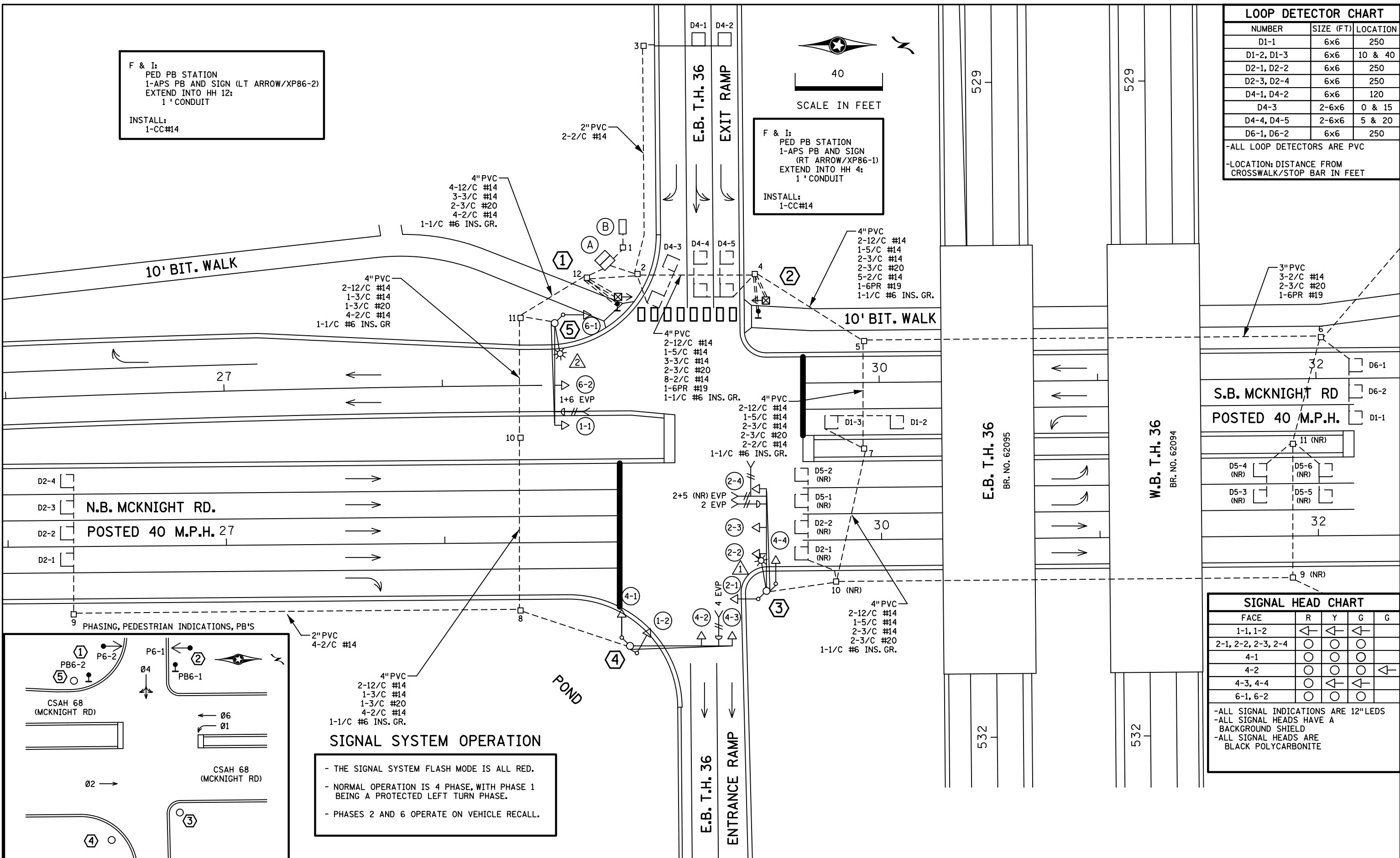
INSTALL:
 1-CC#14

F & I:
 PED PB STATION
 1-APS PB AND SIGN
 (RT ARROW/XP86-1)
 EXTEND INTO HH 4:
 1' CONDUIT

INSTALL:
 1-CC#14

LOOP DETECTOR CHART		
NUMBER	SIZE (FT)	LOCATION
D1-1	6x6	250
D1-2, D1-3	6x6	10 & 40
D2-1, D2-2	6x6	250
D2-3, D2-4	6x6	250
D4-1, D4-2	6x6	120
D4-3	2-6x6	0 & 15
D4-4, D4-5	2-6x6	5 & 20
D6-1, D6-2	6x6	250

-ALL LOOP DETECTORS ARE PVC
 -LOCATION: DISTANCE FROM CROSSWALK/STOP BAR IN FEET



SIGNAL SYSTEM OPERATION
 - THE SIGNAL SYSTEM FLASH MODE IS ALL RED.
 - NORMAL OPERATION IS 4 PHASE, WITH PHASE 1 BEING A PROTECTED LEFT TURN PHASE.
 - PHASES 2 AND 6 OPERATE ON VEHICLE RECALL.

SIGNAL HEAD CHART				
FACE	R	Y	G	G
1-1, 1-2	◀	◀	◀	
2-1, 2-2, 2-3, 2-4	○	○	○	
4-1	○	○	○	
4-2	○	○	○	◀
4-3, 4-4	○	◀	◀	
6-1, 6-2	○	○	○	

-ALL SIGNAL INDICATIONS ARE 12" LEDS
 -ALL SIGNAL HEADS HAVE A BACKGROUND SHIELD
 -ALL SIGNAL HEADS ARE BLACK POLYCARBONITE

BY	DATE	REVISIONS	SYSTEM ID: 38543	T.E.	S.A.P. NO.	DRAWN BY:	CKD BY:	DATE:
EJA	01-08-16	AS-BUILT OF SP 8825-507 APS UPDATES						
JT3	05-21-18	PED PB STATION, APS PUSH BUTTONS AND SIGN	METER ADDRESS:		CERTIFIED BY _____	LIC. NO. _____	DATE: _____	
			MASTER ID: 38542	T.E.	STATE PROJ. NO. (T.H.36)	SHEET NO. 1 OF 3 SHEETS		

POLE NOTES

① S.B. STA. 28+81, 40' LT.
PEDESTAL FOUNDATION
10' PEDESTAL POLE PLUS BASE
ONEWAY CD PED HEAD AT 270 DEG
APS PB & SIGN (RT ARROW) PB6-2
R9-3 SIGN (FACING POLE 4)
EXTEND INTO HH 12:
2" PVC
1-3/C #14
1-2/C #14
2-1/C #6 INS. GR.
PULL BACK INTO HH12:
1-3/C #14

② S.B. STA. 29+48, 38' LT.
PEDESTAL FOUNDATION
10' PEDESTAL POLE PLUS BASE
ONEWAY CD PED HEAD AT 90 DEG
APS PB & SIRM (LT ARROW) PB6-1
R9-3 SIGN (FACING POLE 3)
R6-1L SIGN (ONE WAY)
R6-1R SIGN (ONE WAY)
EXTEND INTO HH 4:
2" PVC
1-3/C #14
1-2/C #14
2-1/C #6 INS. GR.

③ N.B. STA. 29+47, 23' RT.
PA100 POLE FOUNDATION
(W/1" PVC STUB OUT & 5/8" X 15' GR. ROD)
TYPE PA100-A-45-D40-9 (DAVIT AT 350 DEG)
3-ONE WAY SIGNALS AT 0', 18' AND 30'
ONE WAY SIGNAL MOUNTED AT 45 DEG
ONE WAY SIGNAL MOUNTED AT 225 DEG
TWO WAY 1-CHANNEL EVP DETECTOR
(PH 2+5NR) AT 5'
ONE WAY EVP DETECTOR AND
CONFIRMATORY LIGHT (PH 2)
LUMINAIRE-250W HPS
2-R9-3 SIGNS (FACING POLES 2&4)
R6-1L SIGN (ONE WAY)
2-TYPE D SIGNS
EXTEND INTO HH 10 (NR):
3" PVC
2-12/C #14
1-5/C #14
2-3/C #14
2-3/C #20
1-1/C #6 INS. GR.

Ⓐ S.B. STA. 28+76, 56' LT.
EQUIPMENT PAD (SEE DETAIL SHEET)
SERVICE CABINET
MASTER CONTROLLER, CONTROLLER AND CABINET
APS CONTROL UNIT
4" NMC TO HH 2:
2-12/C #14 4" NMC TO HH 12:
1-5/C #14 4-12/C #14
2-3/C #14 3-3/C #14
2-3/C #20 2-3/C #20
11-2/C #14 5-2/C #14
1-6PR #19 1-1/C #6 INS. GR.
1-1/C #6 INS. GR. 1-2/C #14

2" AND 3" NMC STUBBED OUT (CAPPED BOTH ENDS)
3/4" NMC STUBBED OUT (CAPPED FOR TELEPHONE LINE)
SERVICE CABINET TO CONTROLLER CABINET:
2" NMC
2-1/C #6
1-1/C #6 INS. GR.
SERVICE CABINET TO HH 1:
2" NMC
3-1/C #2
SERVICE CABINET TO HH 12:
2" NMC
2-3/C #14
HH 12 TO HH 2:
2" NMC
1-3/C #14

④ N.B. STA. 28+84, 48' RT.
PA100 POLE FOUNDATION
(W/1" PVC STUB OUT & 5/8" X 15' GR. ROD)
TYPE PA100-A-45
2-ONE WAY SIGNALS AT 0', & 13'
ONE WAY SIGNAL AT 45 DEG
ONE WAY SIGNAL AT 225 DEG
ONE WAY EVP DETECTOR AND
CONFIRMATORY LIGHT (PH 4)
2-R9-3 SIGNS (FACING POLES 1&3)
R6-1L SIGN (ONE WAY)
R6-1R SIGN (ONE WAY)
TYPE D SIGN
EXTEND INTO HH 8:
3" PVC
2-12/C #14
1-3/C #14
1-3/C #20
1-1/C #6 INS. GR.

⑤ S.B. STA. 28+52, 28' LT.
PA100 POLE FOUNDATION
(W/1" PVC STUB OUT & 5/8" X 15' GR. ROD)
TYPE PA100-A-45-D40-9 (DAVIT AT 350")
2-ONE WAY SIGNALS AT 0', & 19'
ONE WAY SIGNAL AT 225 DEG
ONE WAY EVP DETECTOR AND
CONFIRMATORY LIGHT (PH 1+6)
LUMINAIRE-250W HPS
R6-1R SIGN (ONE WAY)
TYPE D SIGN
EXTEND INTO HH 11:
3" PVC
2-12/C #14
2-3/C #14
1-3/C #20
2-1/C #6 INS. GR.

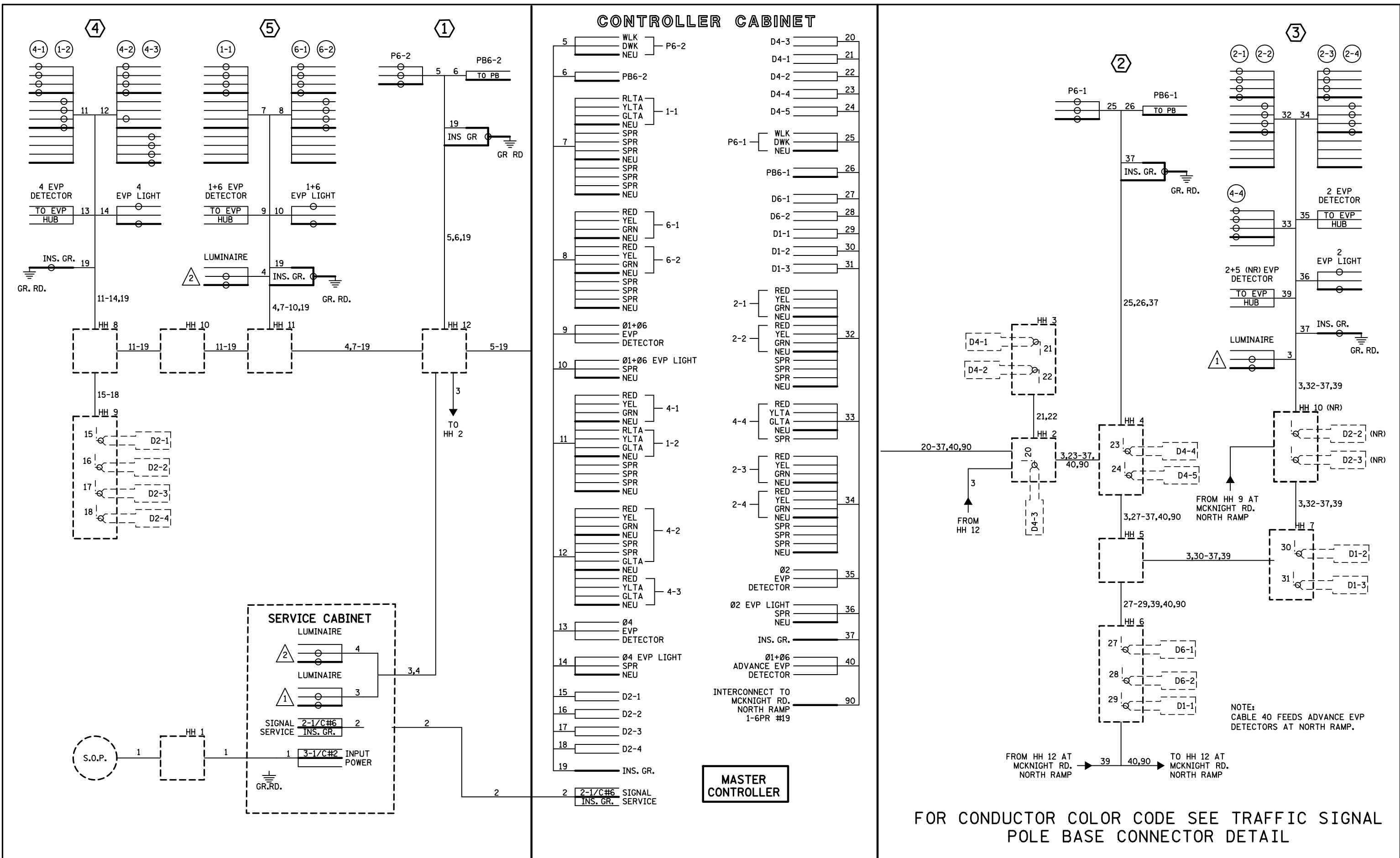
Ⓑ SOP-BY NORTH ST. PAUL UTILITIES
EQUIPMENT PAD WITH TRANSFORMER
2" PVC INTO HH 1:
3-1/C #2

DISTRICT #: Metro
 PLOT NAME: Pole Notes
 PATH & FILENAME: Projects\DM罗斯03600000\Traffic\Signal\38543\T 38543.spl.dgn
 PLOTTED/REVISED: 22-MAY-2018

BY	DATE	REVISIONS	SYSTEM ID: 38543	T.E.	POLE NOTES TH 36 AT CSAH 68 (MCKNIGHT ROAD) SOUTH RAMPS IN NORTH ST. PAUL, RAMSEY CO.	S.A.P. NO.	DRAWN BY:	CKD BY:	DATE:
EJA	01-08-16	AS-BUILT OF SP 8825-507 APS UPDATES	METER ADDRESS:			CERTIFIED BY _____	LIC. NO. _____	DATE: _____	
JT3	05-22-18	PED PB STATION, APS PUSH BUTTONS AND SIGN	MASTER ID: 38542	T.E.		STATE PROJ. NO.	(T.H.36)	SHEET NO.	2 OF

DISTRICT #: Metro
 PLOT NAME: Wiring
 PATH & FILENAME: Projects\DM_POS\036\0000\Traffic\Signal\38543\T 38543.sgl.dgn

PLOTTED/REVISED: 22-MAY-2018



BY	DATE	REVISIONS	SYSTEM ID: 38543	T.E.	S.A.P. NO.	DRAWN BY:	CKD BY:	DATE:
EJA	01-08-16	AS-BUILT OF SP 8825-507 APS UPDATES	METER ADDRESS:		CERTIFIED BY _____	LICENSED PROFESSIONAL ENGINEER	LIC. NO. _____	DATE: _____
			MASTER ID: 38542	T.E.	STATE PROJ.NO.	(T.H.36)	SHEET NO.	3 OF 3 SHEETS

WIRING DIAGRAM
TH 36 AT CSAH 68
(MCKNIGHT ROAD) SOUTH RAMPS
IN NORTH ST. PAUL, RAMSEY CO.

FOR CONDUCTOR COLOR CODE SEE TRAFFIC SIGNAL
 POLE BASE CONNECTOR DETAIL