

INPLACE ELEVATION AND REMOVALS  
INPLACE REINFORCEMENT NOT SHOWN FOR CLARITY

**NOTES:**

- ⊗ DENOTES REMOVAL
- DIMENSIONS FOR NEW WORK BASED ON INPLACE BOLT DIMENSIONS.
- FIELD-VERIFY FOR LENGTH OF REQUIRED THREADED ANCHOR ROD EXTENSION.
- FIELD-ADJUST REBAR LOCATIONS TO AVOID CONDUITS.
- PROVIDE CONCRETE IN ACCORDANCE WITH SPEC. 2461, MIX 3652.
- CONSTRUCT EXTENSION IN ACCORDANCE WITH THE PLAN, SPEC. 2401, AND SPEC. 2471.
- QUANTITIES PROVIDED ARE FOR ONE POST BASE EXTENSION. REBAR QUANTITIES ARE PROVIDED FOR REFERENCE ONLY.
- MINIMUM FOUNDATION EXTENSION IS 1' 0", EXTEND FOUNDATION 1' 0", 1' 6", OR 2' 0" AS REQUIRED. VERIFY WITH THE ENGINEER.
- PROVIDE COUPLING NUTS IN ACCORDANCE WITH ASTM A563 GRADE A AND GALVANIZE IN ACCORDANCE WITH SPEC. 3392. SEE SPECIAL PROVISION FOR SPECIAL INSPECTION OF COUPLING NUT INSTALLATION.
- FURNISH TYPE B ANCHOR RODS IN ACCORDANCE WITH SPEC. 3385.
- FURNISH EPOXY-COATED REINFORCING BARS IN ACCORDANCE WITH SPEC. 3301.

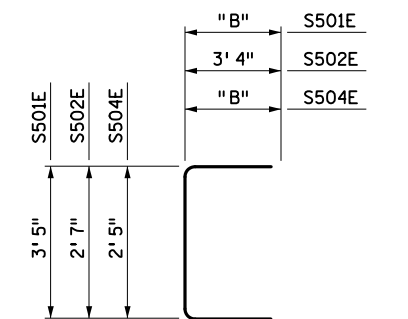
- ① SAWCUT PEDESTAL PERIMETER WITHOUT CUTTING ANY INPLACE REINFORCEMENT BARS BEFORE REMOVING CONCRETE. ALL INPLACE REINFORCEMENT BARS TO REMAIN. CLEAN AND STRAIGHTEN INPLACE REINFORCEMENT.
- ② REMOVE UNSOUND CONCRETE.
- ③ CLEAN CONCRETE.
- ④ APPLY EPOXY BONDING AGENT BEFORE PLACING NEW CONCRETE.
- ⑤ INPLACE ANCHOR RODS WITH MINIMAL OR NO DETERIORATION MAY REMAIN WITHOUT CUTTING IF COMPATIBLE WITH THE FOUNDATION EXTENSION. PROVIDE 2" MINIMUM COVER FOR COUPLING NUTS.
- ⑥ EXTEND EXISTING CONDUIT AS NEEDED.
- ⑦ 2 1/4" DIAMETER ANCHOR ROD (TYPE 8 POST); 2 1/2" DIAMETER ANCHOR ROD (TYPE 9 POST). FIELD VERIFY.
- ⑧ 10 1/4" TYPE 8 POST; 11" TYPE 9 POST.

EXTENSION DIMENSIONS AND QUANTITIES											
EXTENSION, "P"	"H"	"X"	"L"	"B"	"C"	"D"	"E"	"F"	"G"	CONCRETE (CY)	REINF. STEEL (LBS.)
1' 0"	1' 6"	4	1	1' 3"	5' 11"	8	4	4' 11"	8	0.67	148
1' 6"	2' 0"	5	2	1' 9"	6' 11"	10	5	5' 11"	10	0.89	183
2' 0"	2' 6"	6	3	2' 3"	7' 11"	12	6	6' 11"	12	1.12	218

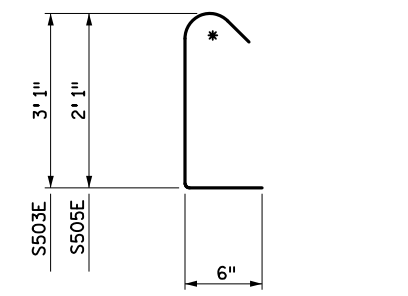
**BAR BENDING DIAGRAMS**

BENT BAR DIMENSIONS GIVEN ARE OUT-TO-OUT. DETERMINE ACTUAL BAR LENGTHS BASED ON THE DETAIL DIMENSIONS SHOWN IN THE BAR BENDING DIAGRAMS.

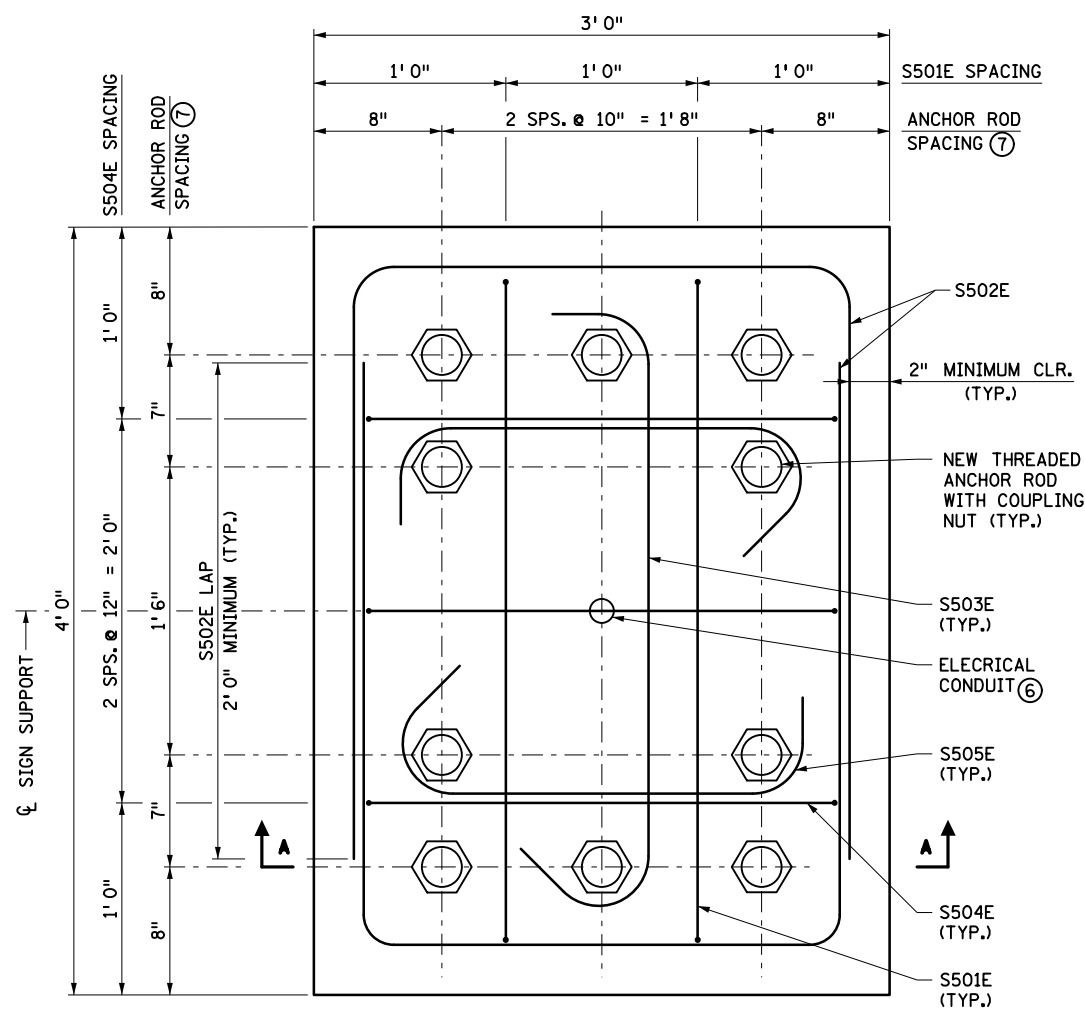
\* DENOTES STANDARD STIRRUP HOOK.



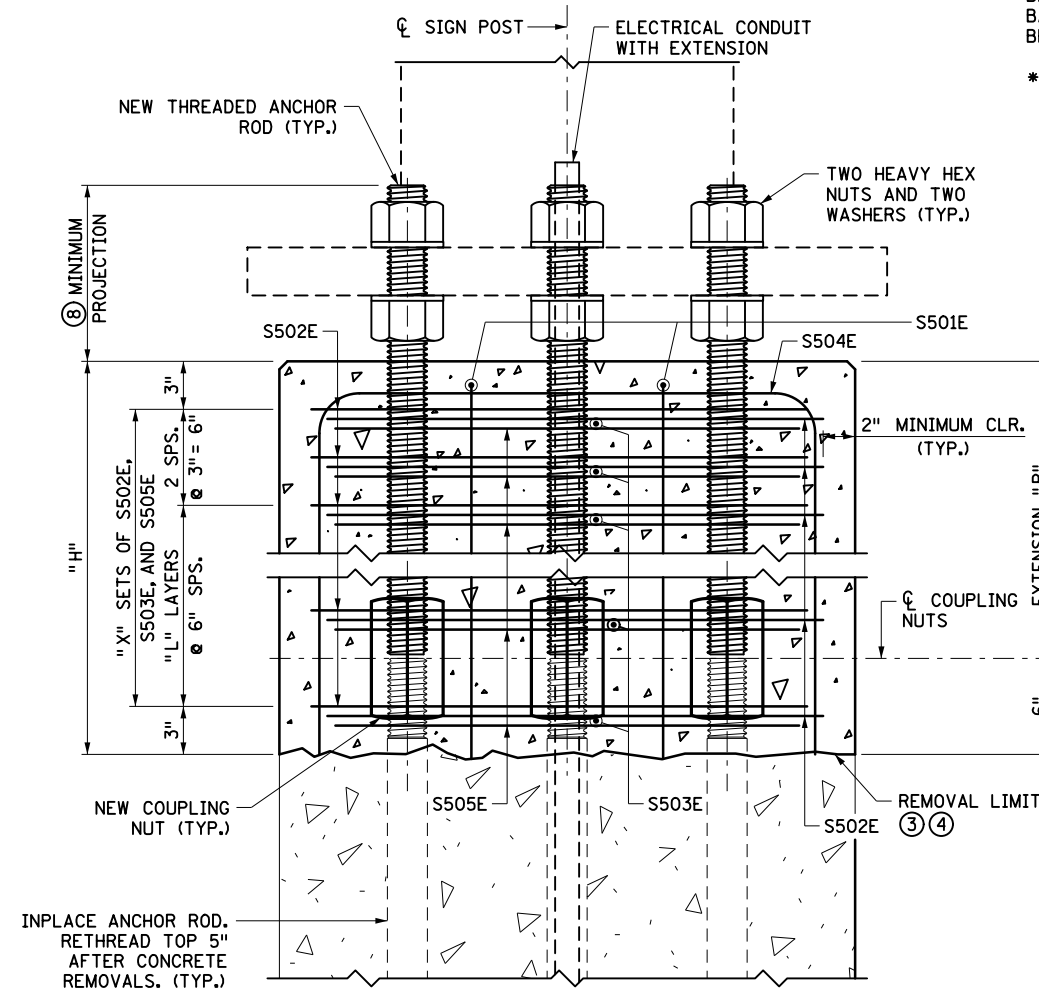
S501E, S502E, & S504E



S503E & S505E



NEW CONSTRUCTION PLAN VIEW



SECTION A-A  
INPLACE REINFORCEMENT NOT SHOWN FOR CLARITY

BILL OF REINFORCEMENT				
BAR	NO.	LENGTH	SHAPE	LOCATION
S501E	2	"C"	U	VERTICAL TIE
S502E	"D"	9' 3"	U	HORIZONTAL TIE
S503E	"E"	4' 1"	U	HORIZONTAL TIE
S504E	3	"F"	U	VERTICAL TIE
S505E	"G"	3' 1"	U	HORIZONTAL TIE

LEAD EXPERT OFFICE  
KEVIN WESTERN  
STATE BRIDGE ENGINEER

OVERHEAD SIGN STRUCTURES FOUNDATION EXTENSION  
DESIGN B EXTENSION DETAILS - TYPE 8-9 POSTS

APPROVED: 01-15-2021  
REVISED:

THOMAS STYRICKI  
STATE DESIGN ENGINEER

STANDARD PLAN  
5-297.786

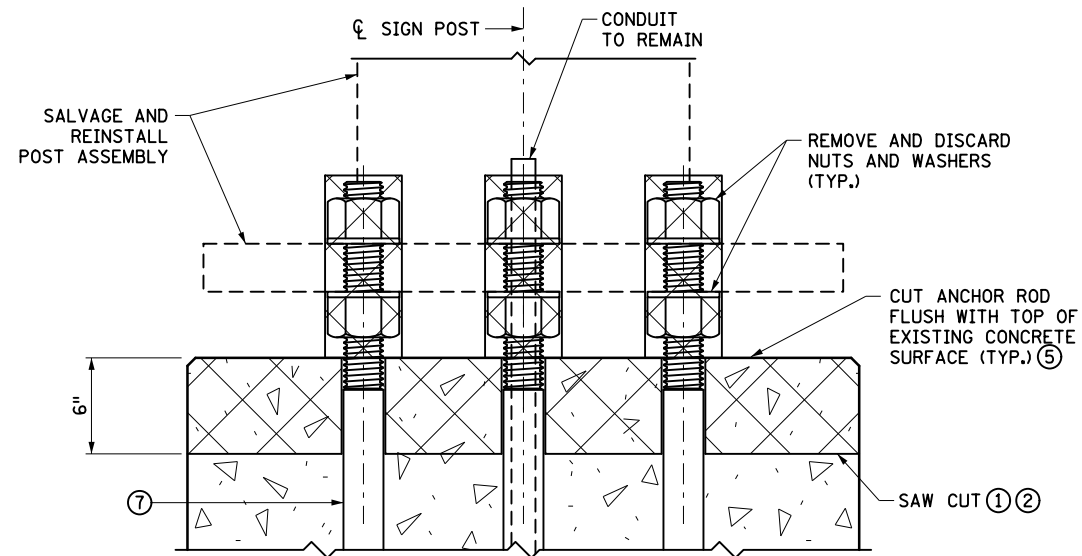
1 OF 2



STANDARD PLAN

STATE PROJ. NO.  
TRUNK HWY.

SHEET NO.  
TOTAL SHEETS



**INPLACE ELEVATION AND REMOVALS**  
INPLACE REINFORCEMENT NOT SHOWN FOR CLARITY

**NOTES:**

⊗ DENOTES REMOVAL  
DIMENSIONS FOR NEW WORK BASED ON INPLACE BOLT DIMENSIONS.  
FIELD VERIFY FOR LENGTH OF REQUIRED THREADED ANCHOR ROD EXTENSION.  
FIELD ADJUST REBAR LOCATIONS TO AVOID CONDUITS.  
PROVIDE CONCRETE IN ACCORDANCE WITH SPEC. 2461, MIX 3G52.  
CONSTRUCT EXTENSION IN ACCORDANCE WITH THE PLAN, SPEC. 2401, AND SPEC. 2471.  
QUANTITIES PROVIDED ARE FOR ONE POST BASE EXTENSION. REBAR QUANTITIES ARE PROVIDED FOR REFERENCE ONLY.  
MINIMUM FOUNDATION EXTENSION IS 1' 0". EXTEND FOUNDATION 1' 0", 1' 6", OR 2' 0" AS REQUIRED. VERIFY WITH THE ENGINEER.  
PROVIDE COUPLING NUTS IN ACCORDANCE WITH ASTM A563 GRADE A AND GALVANIZE IN ACCORDANCE WITH SPEC. 3392. SEE SPECIAL PROVISION FOR SPECIAL INSPECTION OF COUPLING NUT INSTALLATION.  
FURNISH TYPE B ANCHOR RODS IN ACCORDANCE WITH SPEC. 3385.  
FURNISH EPOXY-COATED REINFORCING BARS IN ACCORDANCE WITH SPEC. 3301.

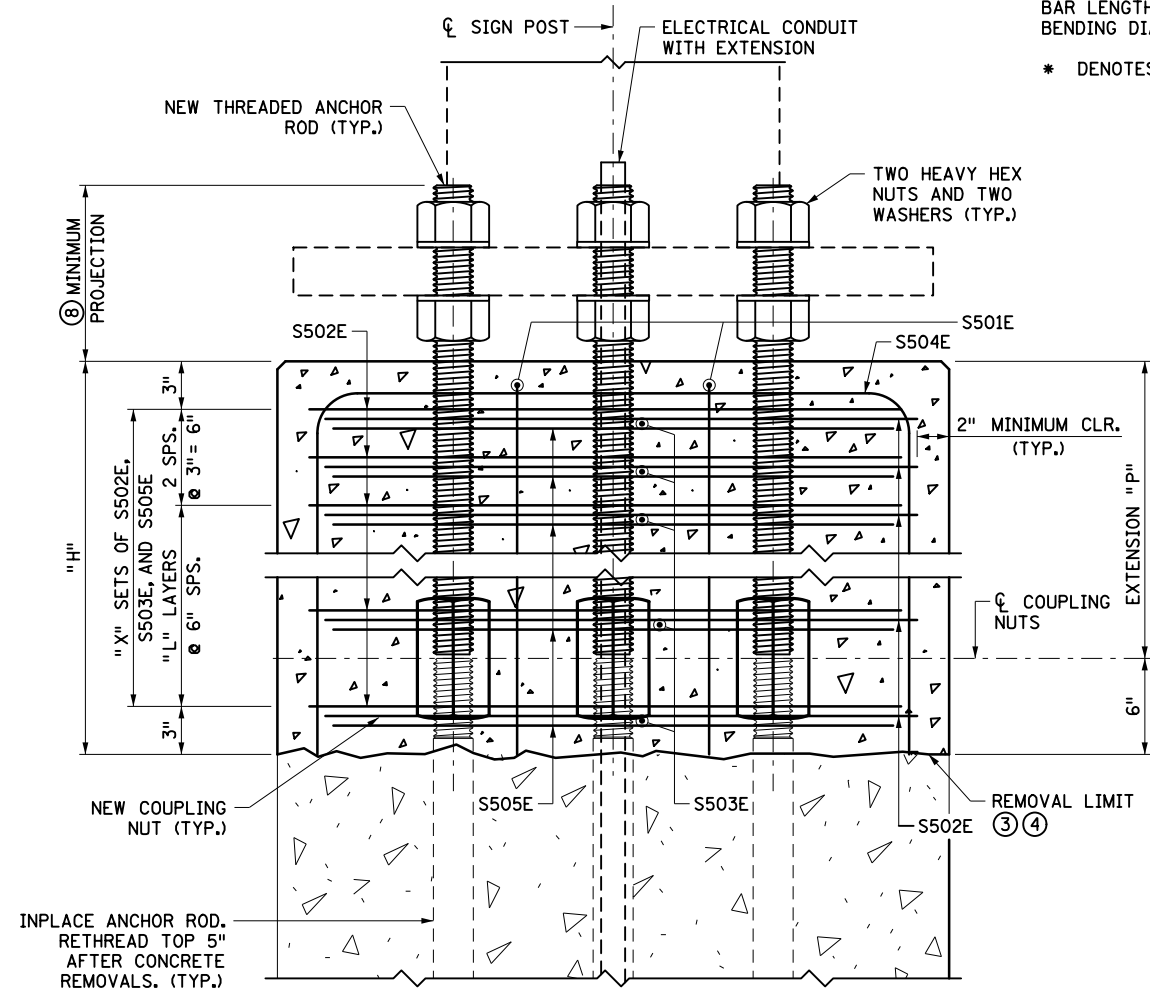
- ① SAWCUT PEDESTAL PERIMETER WITHOUT CUTTING ANY INPLACE REINFORCEMENT BARS BEFORE REMOVING CONCRETE. ALL INPLACE REINFORCEMENT BARS TO REMAIN. CLEAN AND STRAIGHTEN IN-PLACE REINFORCEMENT.
- ② REMOVE UNSOUND CONCRETE.
- ③ CLEAN CONCRETE.
- ④ APPLY EPOXY BONDING AGENT BEFORE PLACING NEW CONCRETE.
- ⑤ INPLACE ANCHOR RODS WITH MINIMAL OR NO DETERIORATION MAY REMAIN WITHOUT CUTTING IF COMPATIBLE WITH THE FOUNDATION EXTENSION. PROVIDE 2" MINIMUM COVER FOR COUPLING NUTS.
- ⑥ EXTEND EXISTING CONDUIT AS NEEDED.
- ⑦ 2 1/4" DIAMETER ANCHOR ROD (TYPE 8 POST); 2 1/2" DIAMETER ANCHOR ROD (TYPE 9 POST). FIELD VERIFY.
- ⑧ 10 1/4" TYPE 8 POST; 11" TYPE 9 POST.

EXTENSION DIMENSIONS AND QUANTITIES											
EXTENSION, "P"	"H"	"X"	"L"	"B"	"C"	"D"	"E"	"F"	"G"	CONCRETE (CY)	REINF. STEEL (LBS.)
1' 0"	1' 6"	4	1	1' 3"	5' 11"	8	4	5' 5"	8	0.78	153
1' 6"	2' 0"	5	2	1' 9"	6' 11"	10	5	6' 5"	10	1.04	190
2' 0"	2' 6"	6	3	2' 3"	7' 11"	12	6	7' 5"	12	1.30	227

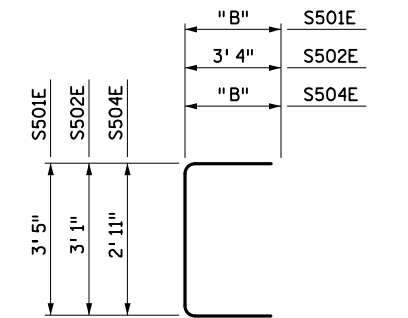
**BAR BENDING DIAGRAMS**

BENT BAR DIMENSIONS GIVEN ARE OUT-TO-OUT. DETERMINE ACTUAL BAR LENGTHS BASED ON THE DETAIL DIMENSIONS SHOWN IN THE BAR BENDING DIAGRAMS.

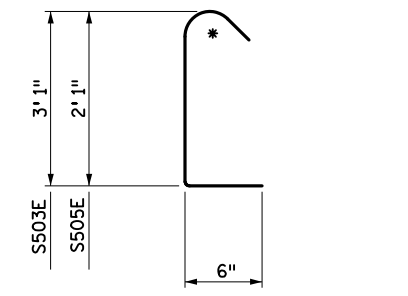
\* DENOTES STANDARD STIRRUP HOOK.



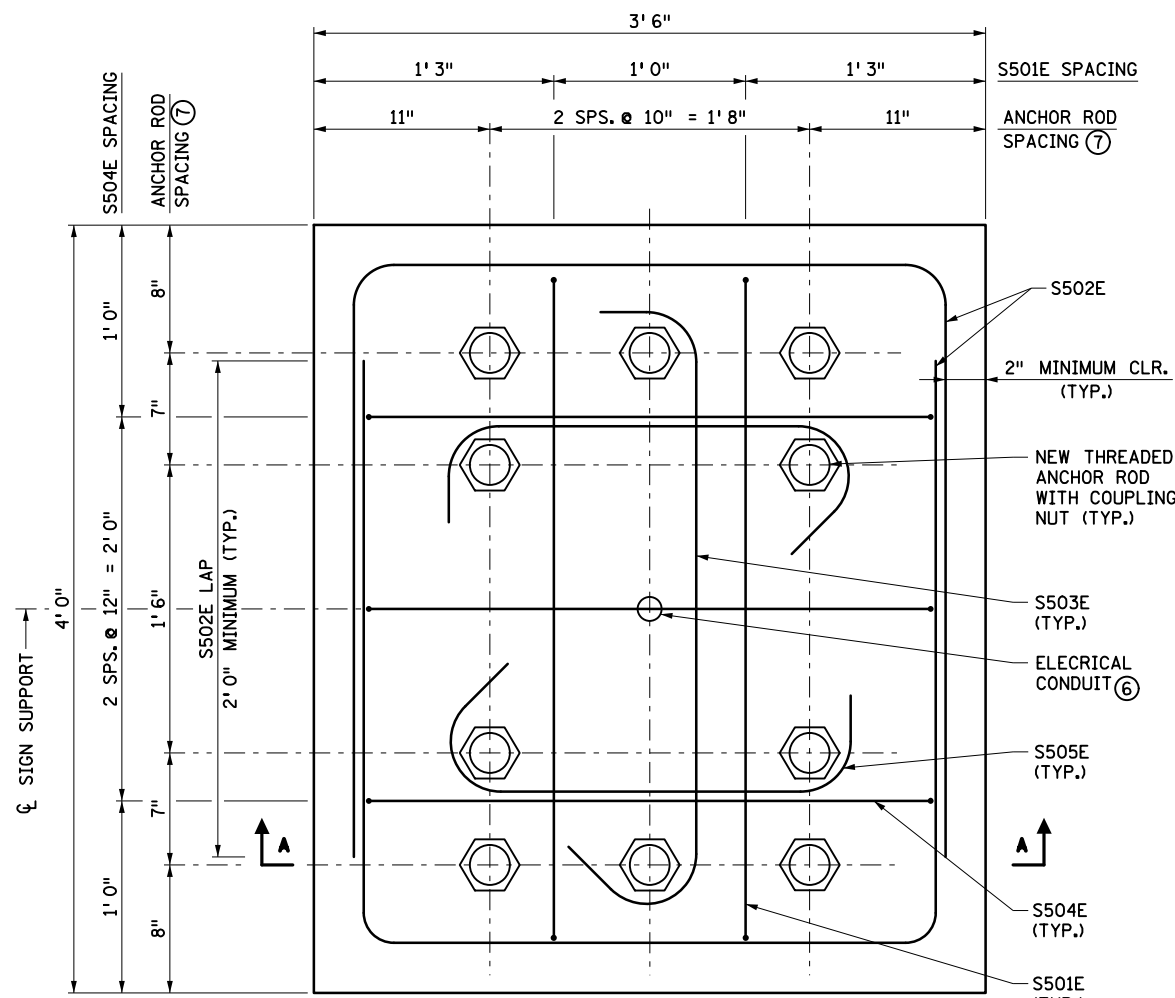
**SECTION A-A**  
INPLACE REINFORCEMENT NOT SHOWN FOR CLARITY



S501E, S502E, & S504E



S503E & S505E



**NEW CONSTRUCTION PLAN VIEW**

BILL OF REINFORCEMENT				
BAR NO.	LENGTH	SHAPE	LOCATION	
S501E	2 "C"	U	VERTICAL TIE	
S502E	"D" 9' 9"	U	HORIZONTAL TIE	
S503E	"E" 4' 1"	U	HORIZONTAL TIE	
S504E	3 "F"	U	VERTICAL TIE	
S505E	"G" 3' 1"	U	HORIZONTAL TIE	

LEAD EXPERT OFFICE  
KEVIN WESTERN  
STATE BRIDGE ENGINEER

OVERHEAD SIGN STRUCTURES FOUNDATION EXTENSION  
DESIGN B EXTENSION DETAILS - TYPE 8-9 POSTS

APPROVED: 01-15-2021  
REVISED:

THOMAS STYRICKI  
STATE DESIGN ENGINEER

STANDARD PLAN  
5-297.786

2 OF 2



STANDARD PLAN

STATE PROJ. NO.  
TRUNK HWY.

SHEET NO.  
TOTAL SHEETS