

INPLACE ELEVATION AND REMOVALS
INPLACE REINFORCEMENT NOT SHOWN FOR CLARITY

NOTES:

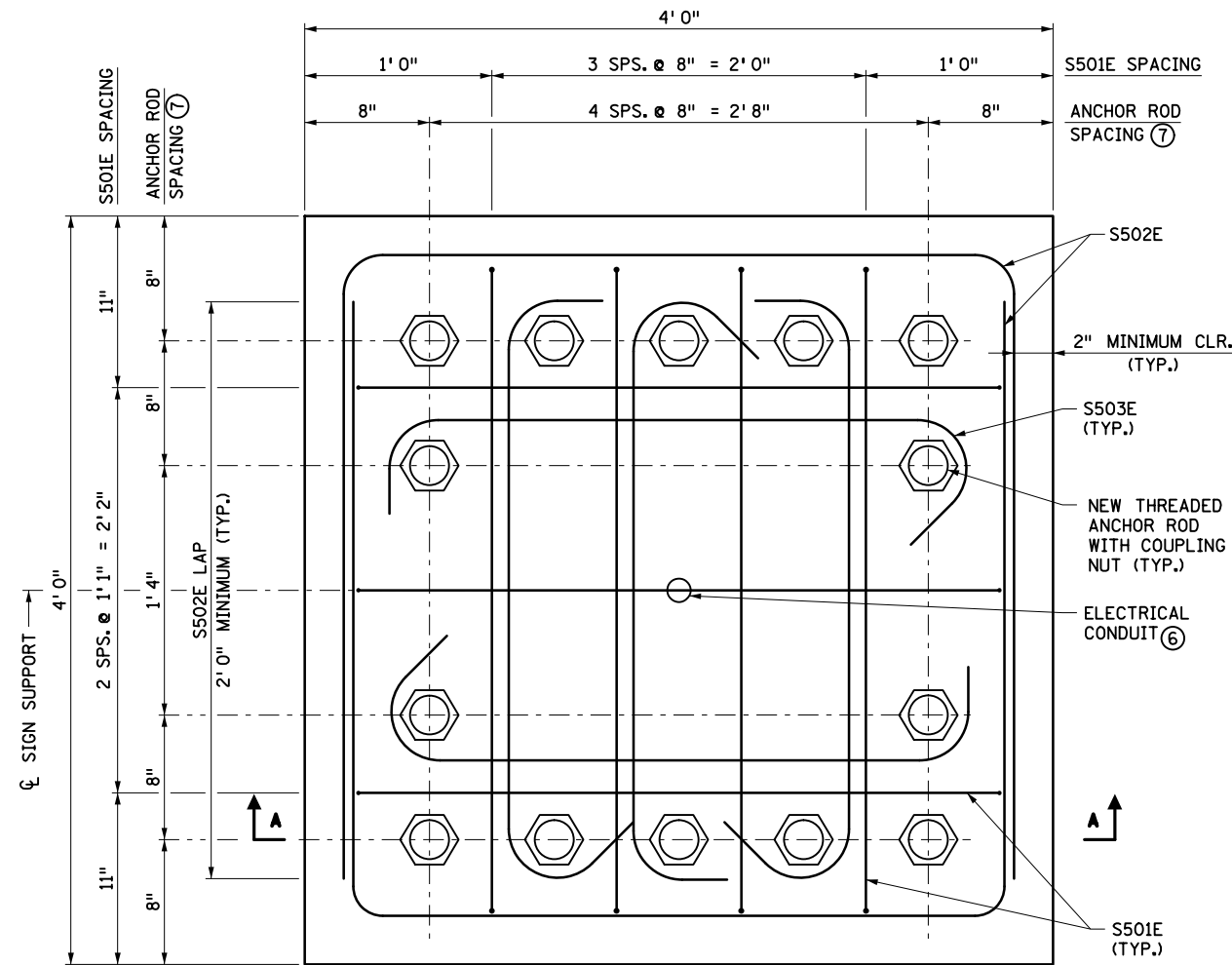
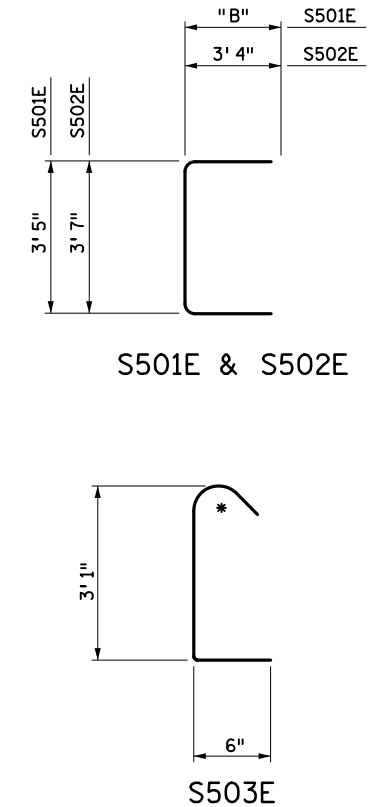
- ☒ DENOTES REMOVAL
- DIMENSIONS FOR NEW WORK BASED ON INPLACE BOLT DIMENSIONS.
- FIELD-VERIFY FOR LENGTH OF REQUIRED THREADED ANCHOR ROD EXTENSION.
- FIELD-ADJUST REBAR LOCATIONS TO AVOID CONDUITS.
- PROVIDE CONCRETE IN ACCORDANCE WITH SPEC. 2461, MIX 3G52.
- CONSTRUCT EXTENSION IN ACCORDANCE WITH THE PLAN, SPEC. 2401, AND SPEC. 2471.
- QUANTITIES PROVIDED ARE FOR ONE POST BASE EXTENSION. REBAR QUANTITIES ARE PROVIDED FOR REFERENCE ONLY.
- MINIMUM FOUNDATION EXTENSION IS 1' 0". EXTEND FOUNDATION 1' 0", 1' 6", OR 2' 0" AS REQUIRED. VERIFY WITH THE ENGINEER.
- PROVIDE COUPLING NUTS IN ACCORDANCE WITH ASTM A563 GRADE A AND GALVANIZE IN ACCORDANCE WITH SPEC. 3392. SEE SPECIAL PROVISION FOR SPECIAL INSPECTION OF COUPLING NUT INSTALLATION.
- FURNISH TYPE B ANCHOR RODS IN ACCORDANCE WITH SPEC. 3385.
- FURNISH EPOXY-COATED REINFORCING BARS IN ACCORDANCE WITH SPEC. 3301.

- ① SAWCUT PEDESTAL PERIMETER WITHOUT CUTTING ANY INPLACE REINFORCEMENT BARS BEFORE REMOVING CONCRETE. ALL INPLACE REINFORCEMENT BARS TO REMAIN. CLEAN AND STRAIGHTEN INPLACE REINFORCEMENT.
- ② REMOVE UNSOUND CONCRETE.
- ③ CLEAN CONCRETE.
- ④ APPLY EPOXY BONDING AGENT BEFORE PLACING NEW CONCRETE.
- ⑤ INPLACE ANCHOR RODS WITH MINIMAL OR NO DETERIORATION MAY REMAIN WITHOUT CUTTING IF COMPATIBLE WITH THE FOUNDATION EXTENSION. PROVIDE 2" MINIMUM COVER FOR COUPLING NUTS.
- ⑥ EXTEND EXISTING CONDUIT AS NEEDED.
- ⑦ 2 1/4" DIAMETER ANCHOR ROD (TYPE 6 POST); 2 1/2" DIAMETER ANCHOR ROD (TYPE 7 POST). FIELD VERIFY.
- ⑧ 9/16" TYPE 6 POST; 10/16" TYPE 7 POST.

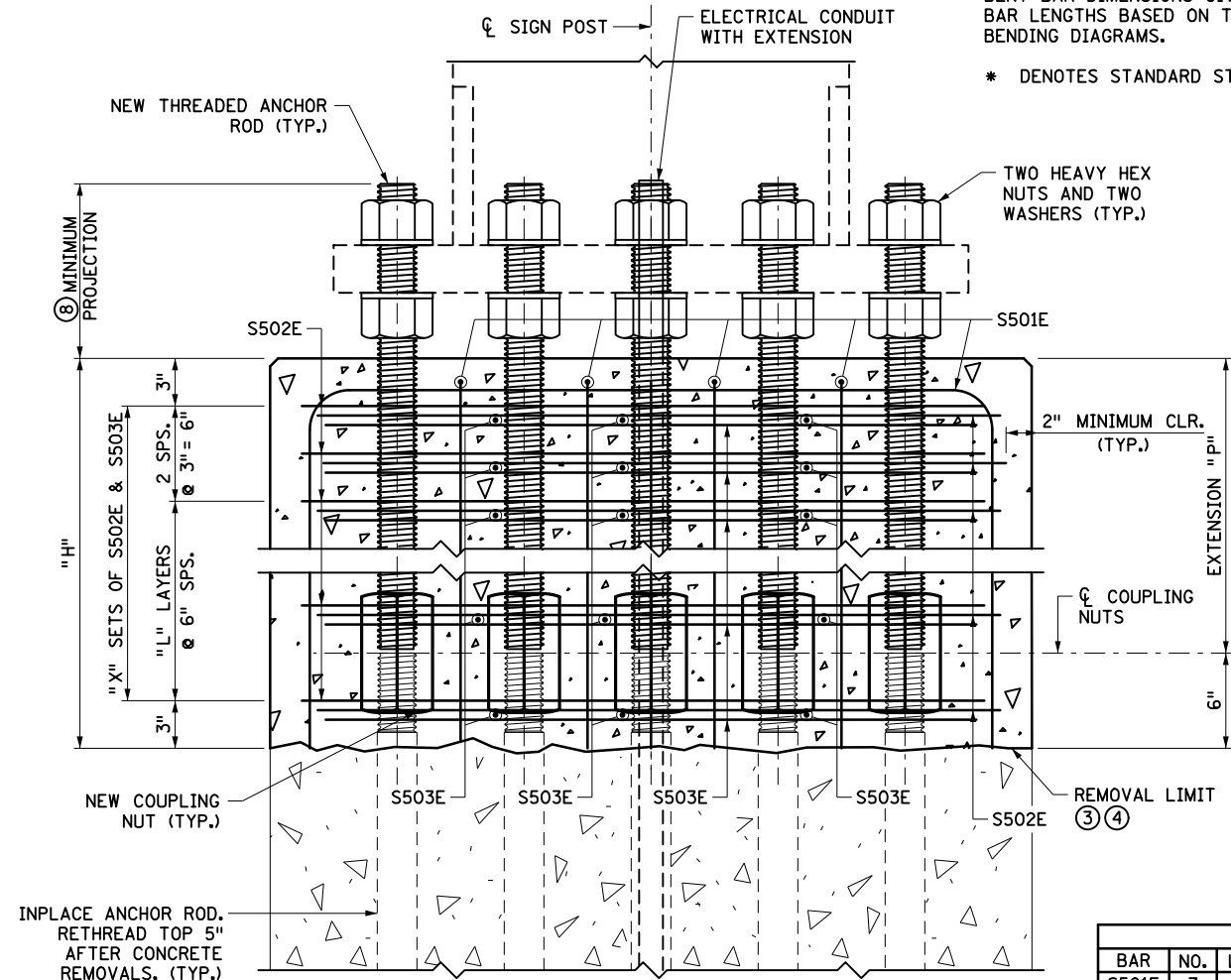
EXTENSION DIMENSIONS AND QUANTITIES									
EXTENSION, "P"	"H"	"X"	"L"	"B"	"C"	"D"	"E"	CONCRETE (CY)	REINF. STEEL (LBS.)
1' 0"	1' 6"	4	1	1' 3"	5' 11"	8	20	0.89	214
1' 6"	2' 0"	5	2	1' 9"	6' 11"	10	25	1.19	264
2' 0"	2' 6"	6	3	2' 3"	7' 11"	12	30	1.49	314

BAR BENDING DIAGRAMS

BENT BAR DIMENSIONS GIVEN ARE OUT-TO-OUT. DETERMINE ACTUAL BAR LENGTHS BASED ON THE DETAIL DIMENSIONS SHOWN IN THE BAR BENDING DIAGRAMS.
* DENOTES STANDARD STIRRUP HOOK.



NEW CONSTRUCTION PLAN VIEW



SECTION A-A
INPLACE REINFORCEMENT NOT SHOWN FOR CLARITY

BILL OF REINFORCEMENT				
BAR NO.	LENGTH	SHAPE	LOCATION	
S501E	7	"C"	VERTICAL TIE	
S502E	"D"	10' 3"	HORIZONTAL TIE	
S503E	"E"	4' 1"	HORIZONTAL TIE	

LEAD EXPERT OFFICE
KEVIN WESTERN
STATE BRIDGE ENGINEER



OVERHEAD SIGN STRUCTURES FOUNDATION EXTENSION
DESIGN B EXTENSION DETAILS - TYPE 6-7 POSTS

APPROVED: 01-15-2021
REVISED:

THOMAS STYRBICKI
STATE DESIGN ENGINEER

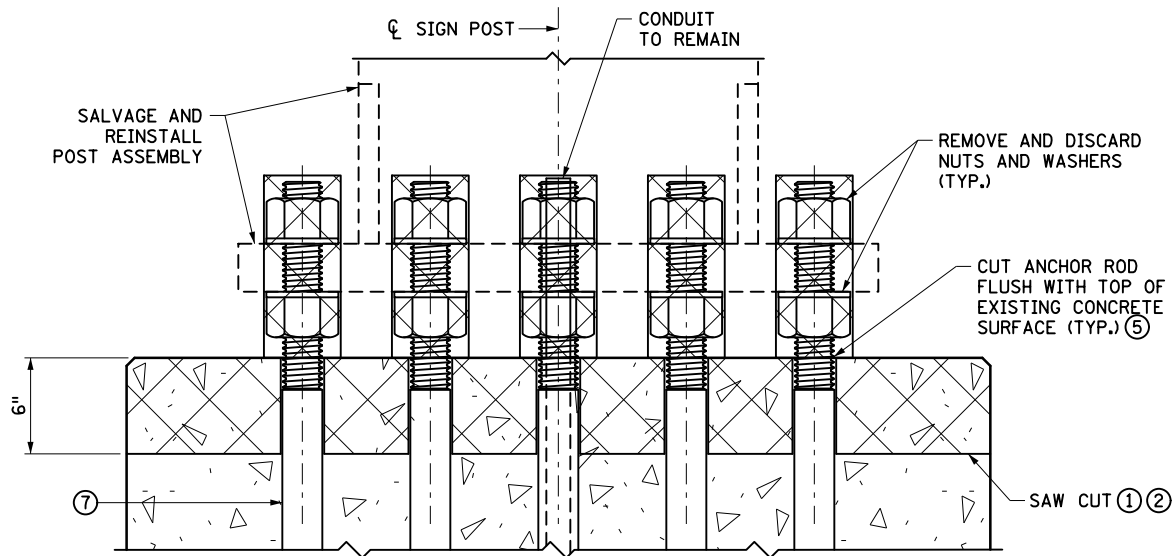
STANDARD PLAN
5-297.785

1 OF 2

STANDARD PLAN

STATE PROJ. NO.
TRUNK HWY.

SHEET NO.
TOTAL SHEETS



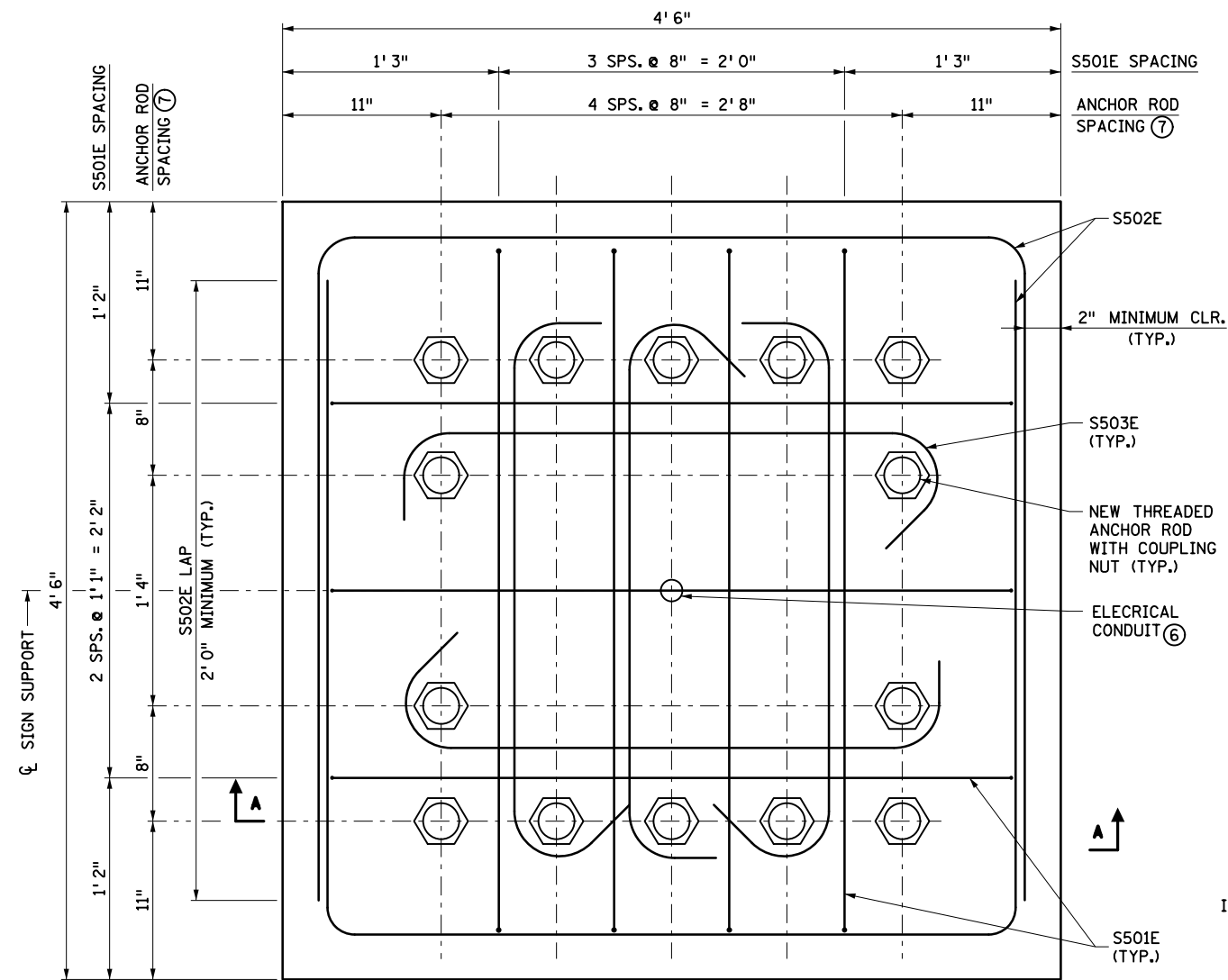
INPLACE ELEVATION AND REMOVALS
INPLACE REINFORCEMENT NOT SHOWN FOR CLARITY

NOTES:

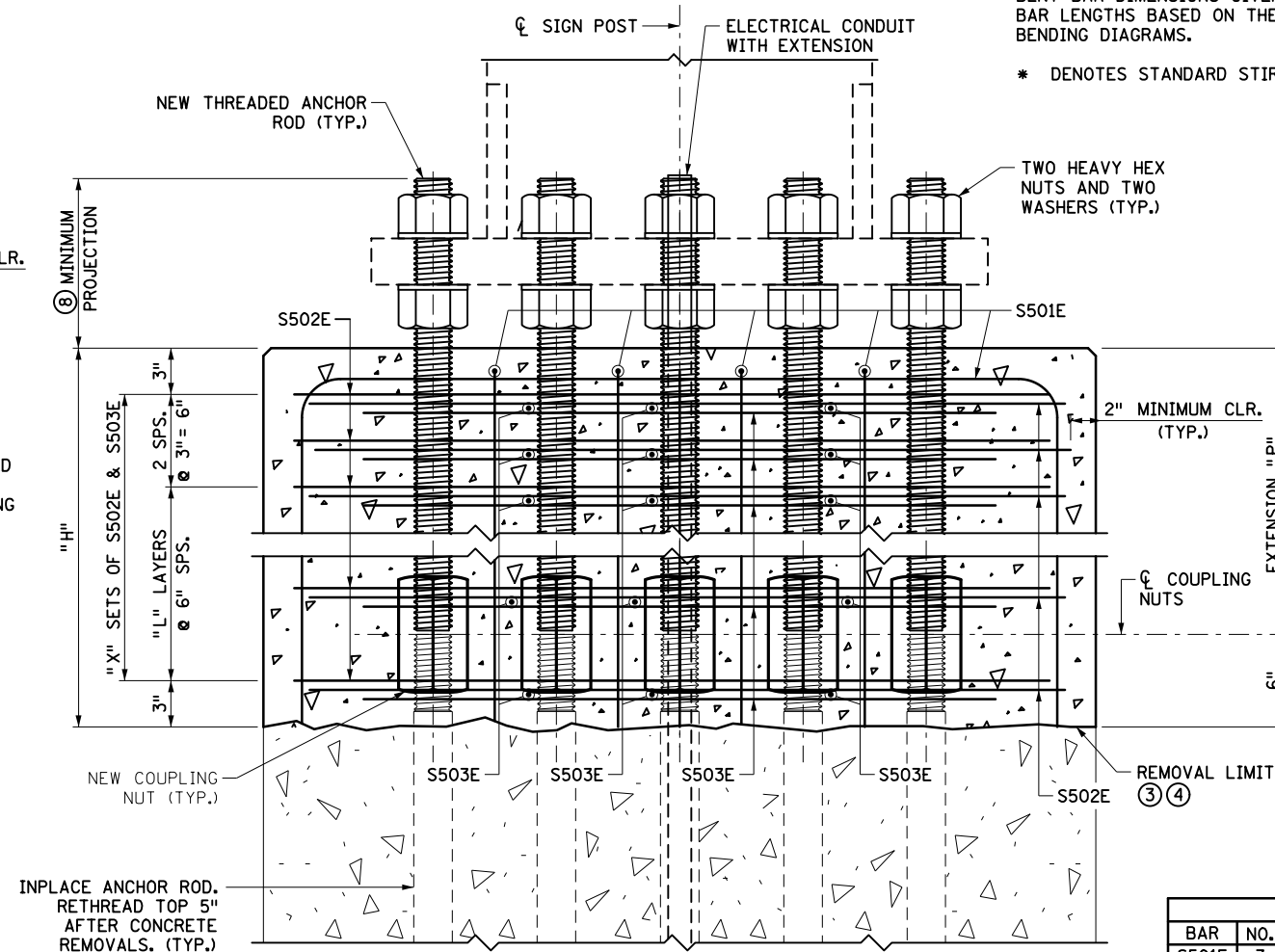
- ⊗ DENOTES REMOVAL
- DIMENSIONS FOR NEW WORK BASED ON INPLACE BOLT DIMENSIONS.
- FIELD-VERIFY FOR LENGTH OF REQUIRED THREADED ANCHOR ROD EXTENSION.
- FIELD-ADJUST REBAR LOCATIONS TO AVOID CONDUITS.
- PROVIDE CONCRETE IN ACCORDANCE WITH SPEC. 2461, MIX 3G52.
- CONSTRUCT EXTENSION IN ACCORDANCE WITH THE PLAN, SPEC. 2401, AND SPEC. 2471.
- QUANTITIES PROVIDED ARE FOR ONE POST BASE EXTENSION. REBAR QUANTITIES ARE PROVIDED FOR REFERENCE ONLY.
- MINIMUM FOUNDATION EXTENSION IS 1' 0". EXTEND FOUNDATION 1' 0", 1' 6", OR 2' 0" AS REQUIRED. VERIFY WITH THE ENGINEER.
- PROVIDE COUPLING NUTS IN ACCORDANCE WITH ASTM A563 GRADE A AND GALVANIZE IN ACCORDANCE WITH SPEC. 3392. SEE SPECIAL PROVISION FOR SPECIAL INSPECTION OF COUPLING NUT INSTALLATION.
- FURNISH TYPE B ANCHOR RODS IN ACCORDANCE WITH SPEC. 3385.
- FURNISH EPOXY-COATED REINFORCING BARS IN ACCORDANCE WITH SPEC. 3301.

- ① SAWCUT PEDESTAL PERIMETER WITHOUT CUTTING ANY INPLACE REINFORCEMENT BARS BEFORE REMOVING CONCRETE. ALL INPLACE REINFORCEMENT BARS TO REMAIN. CLEAN AND STRAIGHTEN IN-PLACE REINFORCEMENT.
- ② REMOVE UNSOUND CONCRETE.
- ③ CLEAN CONCRETE.
- ④ APPLY EPOXY BONDING AGENT BEFORE PLACING NEW CONCRETE.
- ⑤ INPLACE ANCHOR RODS WITH MINIMAL OR NO DETERIORATION MAY REMAIN WITHOUT CUTTING IF COMPATIBLE WITH THE FOUNDATION EXTENSION. PROVIDE 2" MINIMUM COVER FOR COUPLING NUTS.
- ⑥ EXTEND EXISTING CONDUIT AS NEEDED.
- ⑦ 2 1/4" DIAMETER ANCHOR ROD (TYPE 6 POST); 2 1/2" DIAMETER ANCHOR ROD (TYPE 7 POST). FIELD VERIFY.
- ⑧ 9/2" TYPE 6 POST; 10 1/2" TYPE 7 POST.

EXTENSION DIMENSIONS AND QUANTITIES									
EXTENSION, "P"	"H"	"X"	"L"	"B"	"C"	"D"	"E"	CONCRETE (CY)	REINF. STEEL (LBS.)
1' 0"	1' 6"	4	1	1' 3"	6' 5"	8	20	1.13	230
1' 6"	2' 0"	5	2	1' 9"	7' 5"	10	25	1.50	283
2' 0"	2' 6"	6	3	2' 3"	8' 5"	12	30	1.88	336



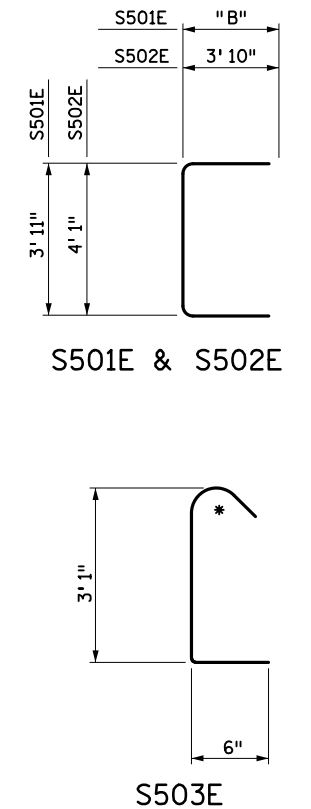
NEW CONSTRUCTION PLAN VIEW



SECTION A-A
INPLACE REINFORCEMENT NOT SHOWN FOR CLARITY

BAR BENDING DIAGRAMS

BENT BAR DIMENSIONS GIVEN ARE OUT-TO-OUT. DETERMINE ACTUAL BAR LENGTHS BASED ON THE DETAIL DIMENSIONS SHOWN IN THE BAR BENDING DIAGRAMS.
* DENOTES STANDARD STIRRUP HOOK.



BILL OF REINFORCEMENT				
BAR NO.	LENGTH	SHAPE	LOCATION	
S501E	7	"C"	VERTICAL TIE	
S502E	"D"	11' 9"	HORIZONTAL TIE	
S503E	"E"	4' 1"	HORIZONTAL TIE	

LEAD EXPERT OFFICE
KEVIN WESTERN
STATE BRIDGE ENGINEER



OVERHEAD SIGN STRUCTURES FOUNDATION EXTENSION
DESIGN B EXTENSION DETAILS - TYPE 6-7 POSTS

APPROVED: 01-15-2021
REVISED:

THOMAS STYRBICKI
STATE DESIGN ENGINEER

STANDARD PLAN
5-297.785
2 OF 2

STANDARD PLAN

STATE PROJ. NO.
TRUNK HWY.
SHEET NO.
TOTAL SHEETS