

INPLACE ELEVATION AND REMOVALS
INPLACE REINFORCEMENT NOT SHOWN FOR CLARITY

NOTES:

☒ DENOTES REMOVAL

DIMENSIONS FOR NEW WORK BASED ON INPLACE BOLT DIMENSIONS.

FIELD-VERIFY FOR LENGTH OF REQUIRED THREADED ANCHOR ROD EXTENSION.

FIELD-ADJUST REBAR LOCATIONS TO AVOID CONDUITS.

PROVIDE CONCRETE IN ACCORDANCE WITH SPEC. 2461, MIX 3G52.

CONSTRUCT EXTENSION IN ACCORDANCE WITH THE PLAN, SPEC. 2401, AND SPEC. 2471.

QUANTITIES PROVIDED ARE FOR ONE POST BASE EXTENSION. REBAR QUANTITIES ARE PROVIDED FOR REFERENCE ONLY.

MINIMUM FOUNDATION EXTENSION IS 1' 0". EXTEND FOUNDATION 1' 0", 1' 6", OR 2' 0" AS REQUIRED. VERIFY WITH THE ENGINEER.

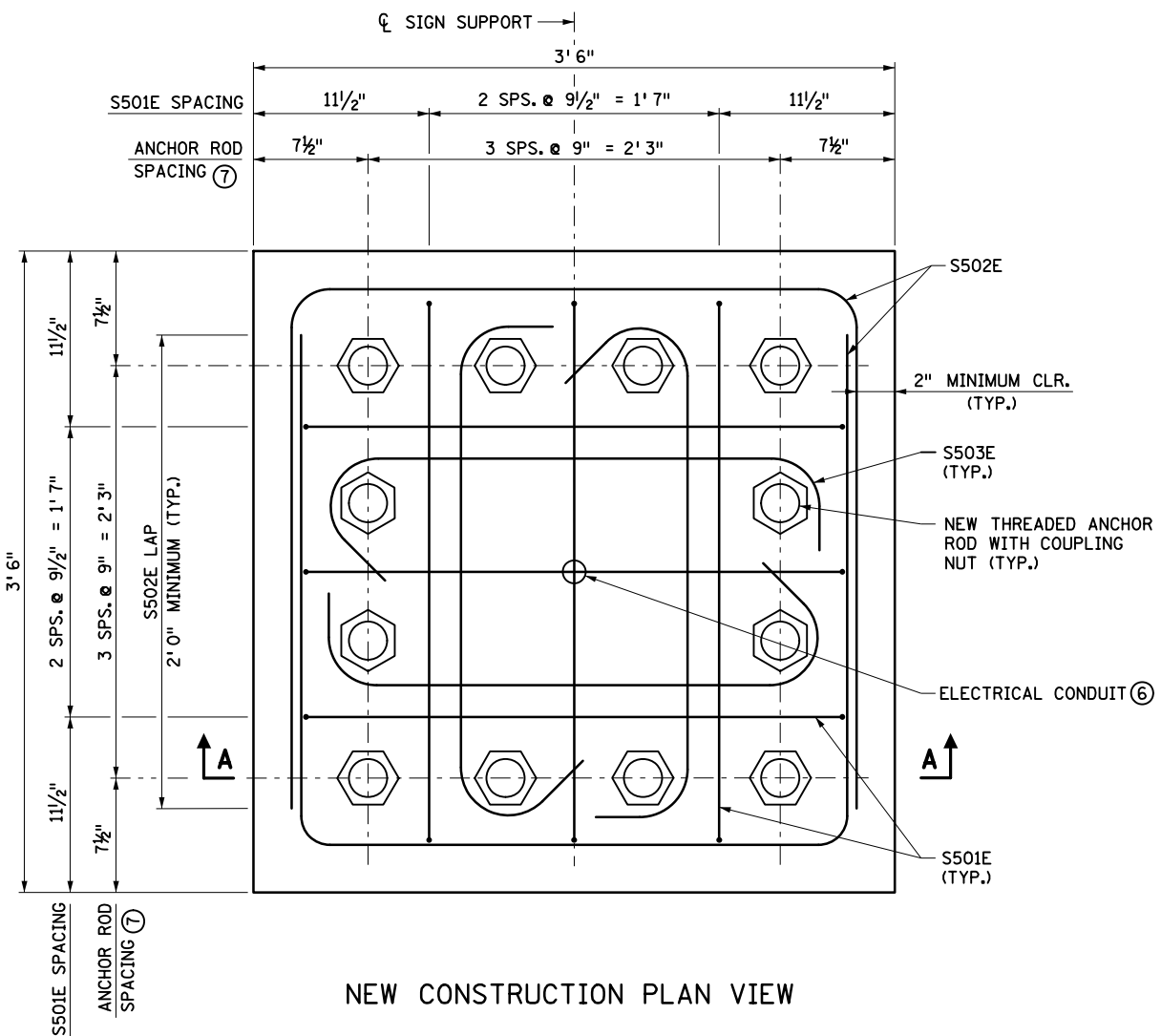
PROVIDE COUPLING NUTS IN ACCORDANCE WITH ASTM A563 GRADE A AND GALVANIZE IN ACCORDANCE WITH SPEC. 3392. SEE SPECIAL PROVISION FOR SPECIAL INSPECTION OF COUPLING NUT INSTALLATION.

FURNISH TYPE B ANCHOR RODS IN ACCORDANCE WITH SPEC. 3385.

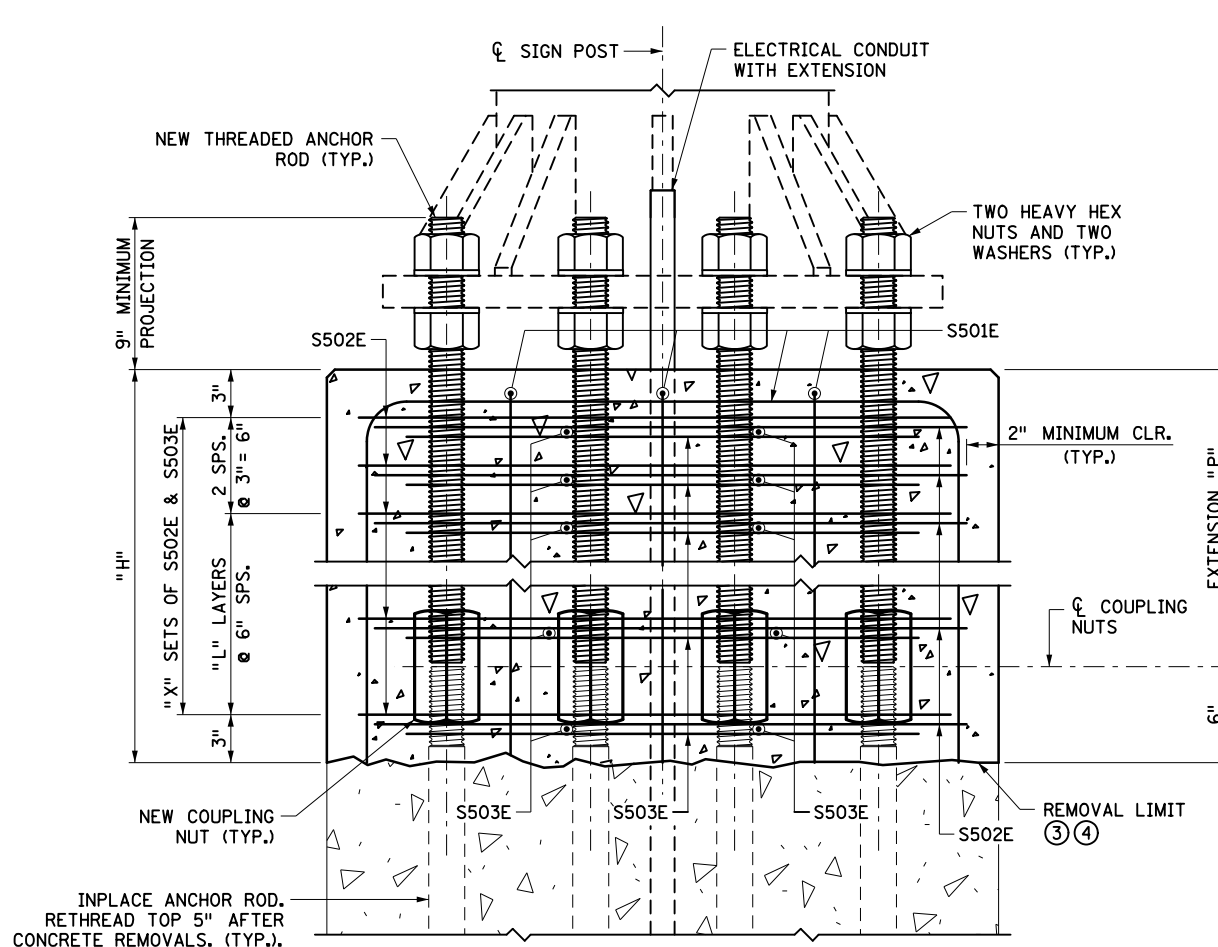
FURNISH EPOXY-COATED REINFORCING BARS IN ACCORDANCE WITH SPEC. 3301.

- ① SAWCUT PEDESTAL PERIMETER WITHOUT CUTTING ANY INPLACE REINFORCEMENT BARS BEFORE REMOVING CONCRETE. ALL INPLACE REINFORCEMENT BARS WILL REMAIN. CLEAN AND STRAIGHTEN INPLACE REINFORCEMENT.
- ② REMOVE UNSOUND CONCRETE.
- ③ CLEAN CONCRETE.
- ④ APPLY EPOXY BONDING AGENT BEFORE PLACING NEW CONCRETE.
- ⑤ INPLACE ANCHOR RODS WITH MINIMAL OR NO DETERIORATION MAY REMAIN WITHOUT CUTTING IF COMPATIBLE WITH THE FOUNDATION EXTENSION. PROVIDE 2" MINIMUM COVER FOR COUPLING NUTS.
- ⑥ EXTEND EXISTING CONDUIT AS NEEDED.
- ⑦ 2 1/2" DIAMETER ANCHOR ROD. FIELD VERIFY.

EXTENSION DIMENSIONS AND QUANTITIES									
EXTENSION, "P"	"H"	"X"	"L"	"B"	"C"	"D"	"E"	CONCRETE (CY)	REINF. STEEL (LBS.)
1' 0"	1' 6"	4	1	1' 3"	5' 5"	8	16	0.69	168
1' 6"	2' 0"	5	2	1' 9"	6' 5"	10	20	0.91	208
2' 0"	2' 6"	6	3	2' 3"	7' 5"	12	24	1.14	248



NEW CONSTRUCTION PLAN VIEW

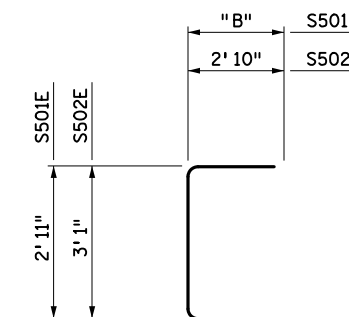


SECTION A-A
INPLACE REINFORCEMENT NOT SHOWN FOR CLARITY

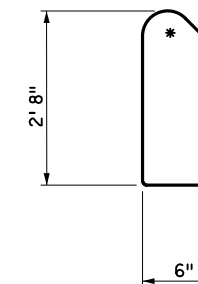
BAR BENDING DIAGRAMS

BENT BAR DIMENSIONS GIVEN ARE OUT-TO-OUT. DETERMINE ACTUAL BAR LENGTHS BASED ON THE DETAIL DIMENSIONS SHOWN IN THE BAR BENDING DIAGRAMS.

* DENOTES STANDARD STIRRUP HOOK.



S501E & S502E



S503E

BILL OF REINFORCEMENT				
BAR	NO.	LENGTH	SHAPE	LOCATION
S501E	6	"C"		VERTICAL TIE
S502E	"D"	8' 9"		HORIZONTAL TIE
S503E	"E"	3' 8"		HORIZONTAL TIE

LEAD EXPERT OFFICE
KEVIN WESTERN
STATE BRIDGE ENGINEER

OVERHEAD SIGN STRUCTURES FOUNDATION EXTENSION
INTERIM DESIGN B EXTENSION DETAILS - TYPE 5-7 POSTS

APPROVED: 01-15-2021
REVISED:

Tom Styrbicki
THOMAS STYRBICKI
STATE DESIGN ENGINEER

STANDARD PLAN
5-297.782

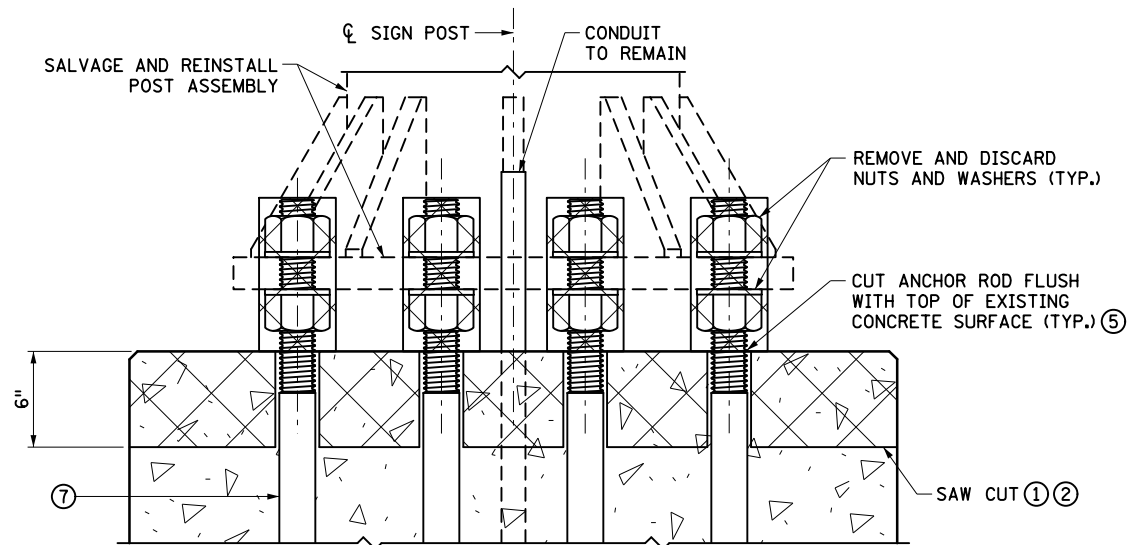
1 OF 2



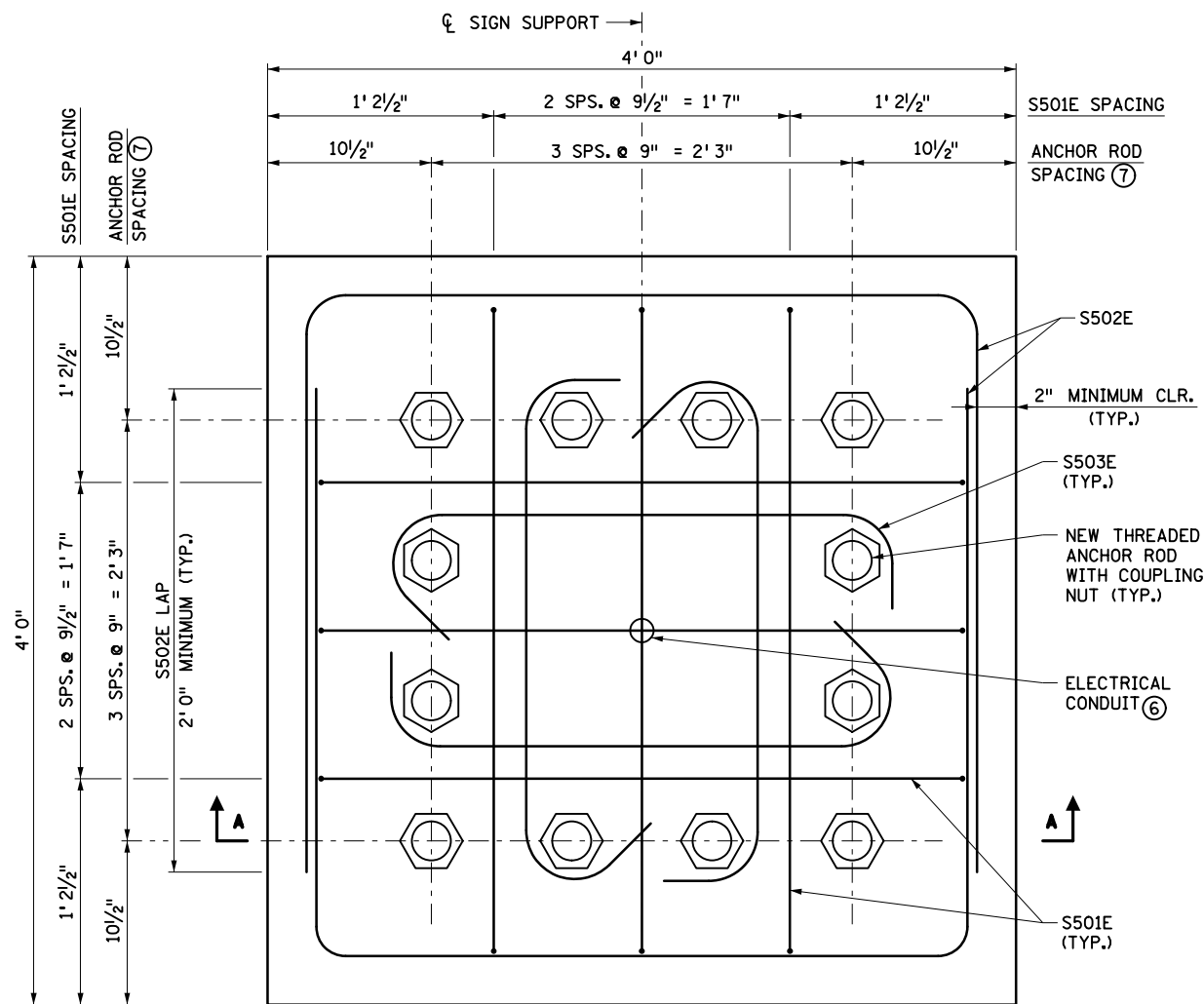
STANDARD PLAN

STATE PROJ. NO.
TRUNK HWY.

SHEET NO.
TOTAL SHEETS



INPLACE ELEVATION AND REMOVALS
INPLACE REINFORCEMENT NOT SHOWN FOR CLARITY



NEW CONSTRUCTION PLAN VIEW

NOTES:

- ☒ DENOTES REMOVAL
- DIMENSIONS FOR NEW WORK BASED ON INPLACE BOLT DIMENSIONS.
- FIELD-VERIFY FOR LENGTH OF REQUIRED THREADED ANCHOR ROD EXTENSION.
- FIELD-ADJUST REBAR LOCATIONS TO AVOID CONDUITS.
- PROVIDE CONCRETE IN ACCORDANCE WITH SPEC. 2461, MIX 3G52.
- CONSTRUCT EXTENSION IN ACCORDANCE WITH THE PLAN, SPEC. 2401, AND SPEC. 2471.
- QUANTITIES PROVIDED ARE FOR ONE POST BASE EXTENSION. REBAR QUANTITIES ARE PROVIDED FOR REFERENCE ONLY.
- MINIMUM FOUNDATION EXTENSION IS 1' 0". EXTEND FOUNDATION 1' 0", 1' 6", OR 2' 0" AS REQUIRED. VERIFY WITH THE ENGINEER.
- PROVIDE COUPLING NUTS IN ACCORDANCE WITH ASTM A563 GRADE A AND GALVANIZE IN ACCORDANCE WITH SPEC. 3392. SEE SPECIAL PROVISION FOR SPECIAL INSPECTION OF COUPLING NUT INSTALLATION.
- FURNISH TYPE B ANCHOR RODS IN ACCORDANCE WITH SPEC. 3385.
- FURNISH EPOXY-COATED REINFORCING BARS IN ACCORDANCE WITH SPEC. 3301.

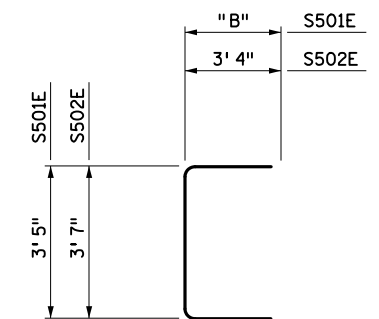
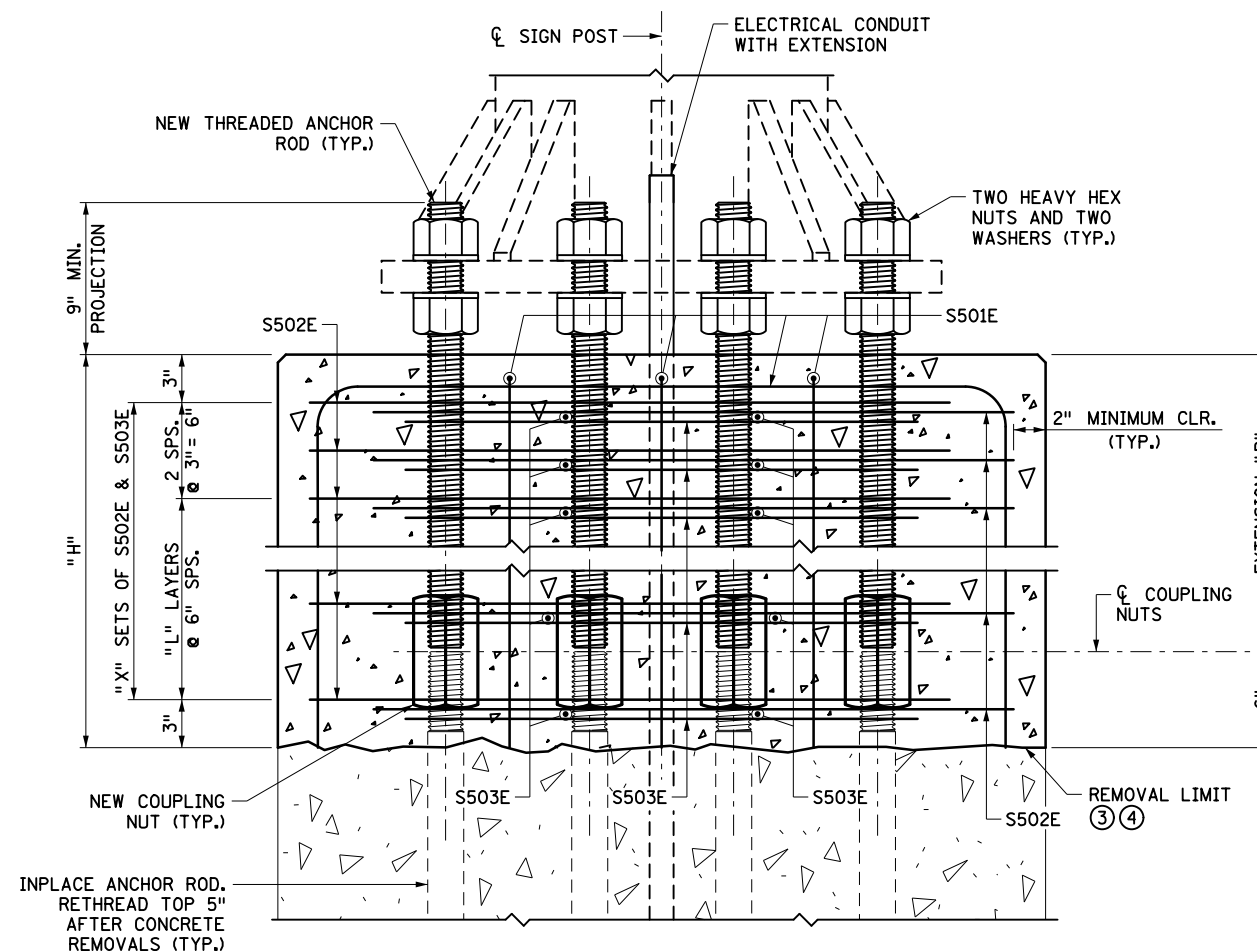
- ① SAWCUT PEDESTAL PERIMETER WITHOUT CUTTING ANY INPLACE REINFORCEMENT BARS BEFORE REMOVING CONCRETE. ALL INPLACE REINFORCEMENT BARS WILL REMAIN. CLEAN AND STRAIGHTEN INPLACE REINFORCEMENT.
- ② REMOVE UNSOUND CONCRETE.
- ③ CLEAN CONCRETE.
- ④ APPLY EPOXY BONDING AGENT BEFORE PLACING NEW CONCRETE.
- ⑤ INPLACE ANCHOR RODS WITH MINIMAL OR NO DETERIORATION MAY REMAIN WITHOUT CUTTING IF COMPATIBLE WITH THE FOUNDATION EXTENSION. PROVIDE 2" MINIMUM COVER FOR COUPLING NUTS.
- ⑥ EXTEND EXISTING CONDUIT AS NEEDED.
- ⑦ 2 1/2" DIAMETER ANCHOR ROD. FIELD-VERIFY.

EXTENSION DIMENSIONS AND QUANTITIES									
EXTENSION, "P"	"H"	"X"	"L"	"B"	"C"	"D"	"E"	CONCRETE (CY)	REINF. STEEL (LBS.)
1' 0"	1' 6"	4	1	1' 3"	5' 11"	8	16	0.89	184
1' 6"	2' 0"	5	2	1' 9"	6' 11"	10	20	1.19	227
2' 0"	2' 6"	6	3	2' 3"	7' 11"	12	24	1.49	270

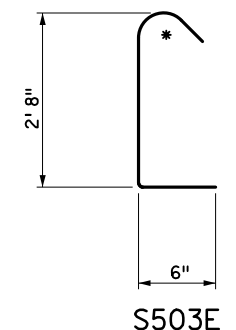
BAR BENDING DIAGRAMS

BENT BAR DIMENSIONS GIVEN ARE OUT-TO-OUT. DETERMINE ACTUAL BAR LENGTHS BASED ON THE DETAIL DIMENSIONS SHOWN IN THE BAR BENDING DIAGRAMS.

* DENOTES STANDARD STIRRUP HOOK.



S501E & S502E



S503E

SECTION A-A
INPLACE REINFORCEMENT NOT SHOWN FOR CLARITY

BILL OF REINFORCEMENT				
BAR NO.	LENGTH	SHAPE	LOCATION	
S501E	6	"C"		VERTICAL TIE
S502E	"D"	10' 3"		HORIZONTAL TIE
S503E	"E"	3' 8"		HORIZONTAL TIE

LEAD EXPERT OFFICE
KEVIN WESTERN
STATE BRIDGE ENGINEER



OVERHEAD SIGN STRUCTURES FOUNDATION EXTENSION
INTERIM DESIGN B EXTENSION DETAILS - TYPE 5-7 POSTS

APPROVED: 01-15-2021
REVISED:

THOMAS STYRBICKI
STATE DESIGN ENGINEER

STANDARD PLAN
5-297.782

2 OF 2

STANDARD PLAN

STATE PROJ. NO.
TRUNK HWY.

SHEET NO.
TOTAL SHEETS