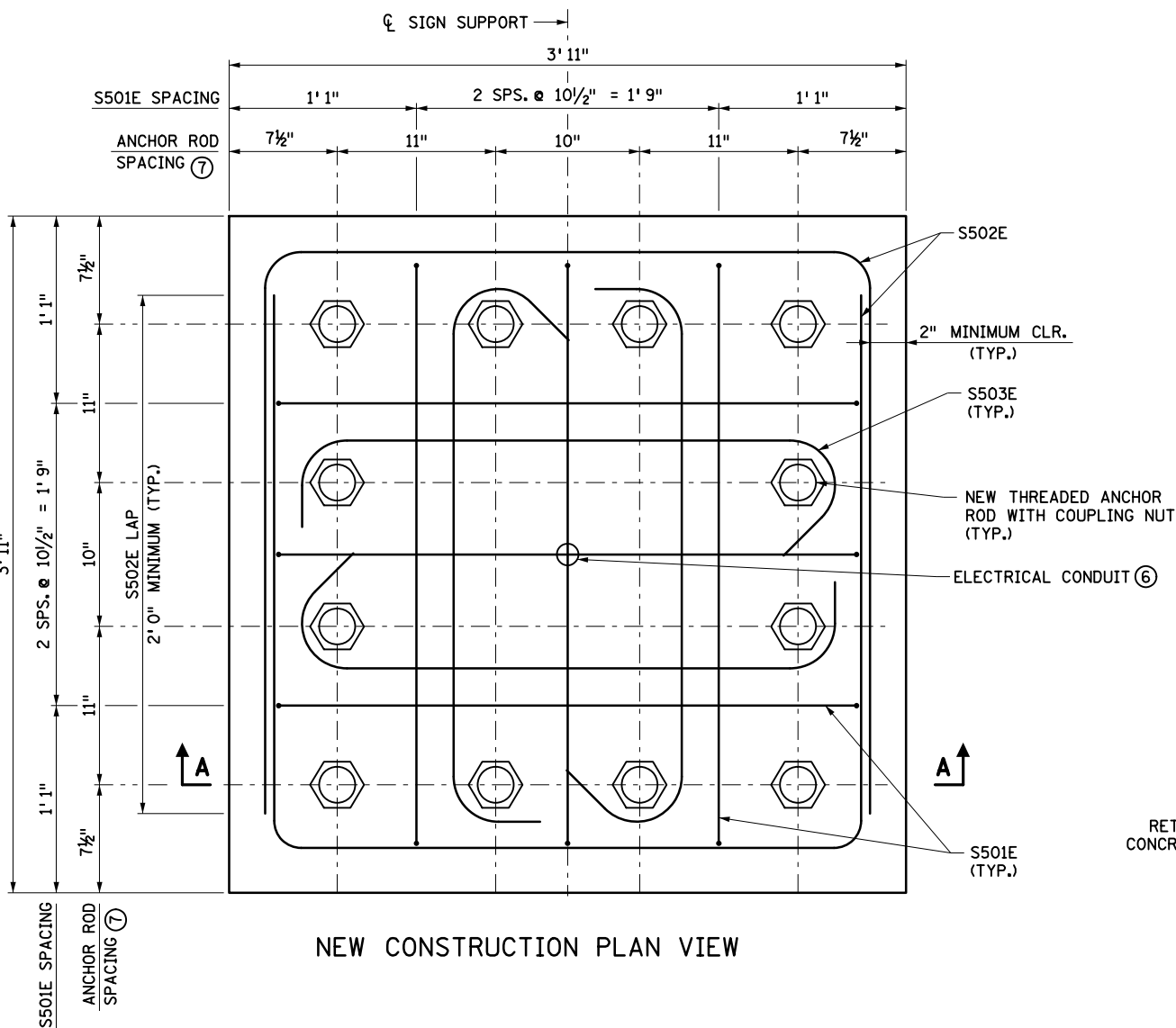


**INPLACE ELEVATION AND REMOVALS**  
INPLACE REINFORCEMENT NOT SHOWN FOR CLARITY



**NEW CONSTRUCTION PLAN VIEW**  
INPLACE REINFORCEMENT NOT SHOWN FOR CLARITY

**NOTES:**

- ☒ DENOTES REMOVAL
- DIMENSIONS FOR NEW WORK BASED ON INPLACE BOLT DIMENSIONS.
- FIELD-VERIFY FOR LENGTH OF REQUIRED THREADED ANCHOR ROD EXTENSION.
- FIELD-ADJUST REBAR LOCATIONS TO AVOID CONDUITS.
- PROVIDE CONCRETE IN ACCORDANCE WITH SPEC. 2461, MIX 3G52.
- CONSTRUCT EXTENSION IN ACCORDANCE WITH THE PLAN, SPEC. 2401, AND SPEC. 2471.
- QUANTITIES PROVIDED ARE FOR ONE POST BASE EXTENSION. REBAR QUANTITIES ARE PROVIDED FOR REFERENCE ONLY.
- MINIMUM FOUNDATION EXTENSION IS 1' 0". EXTEND FOUNDATION 1' 0", 1' 6", OR 2' 0" AS REQUIRED. VERIFY WITH THE ENGINEER.
- PROVIDE COUPLING NUTS IN ACCORDANCE WITH ASTM A563 GRADE A AND GALVANIZE IN ACCORDANCE WITH SPEC. 3392. SEE SPECIAL PROVISION FOR SPECIAL INSPECTION OF COUPLING NUT INSTALLATION.
- FURNISH TYPE B ANCHOR RODS IN ACCORDANCE WITH SPEC. 3385.
- FURNISH EPOXY-COATED REINFORCING BARS IN ACCORDANCE WITH SPEC. 3301.

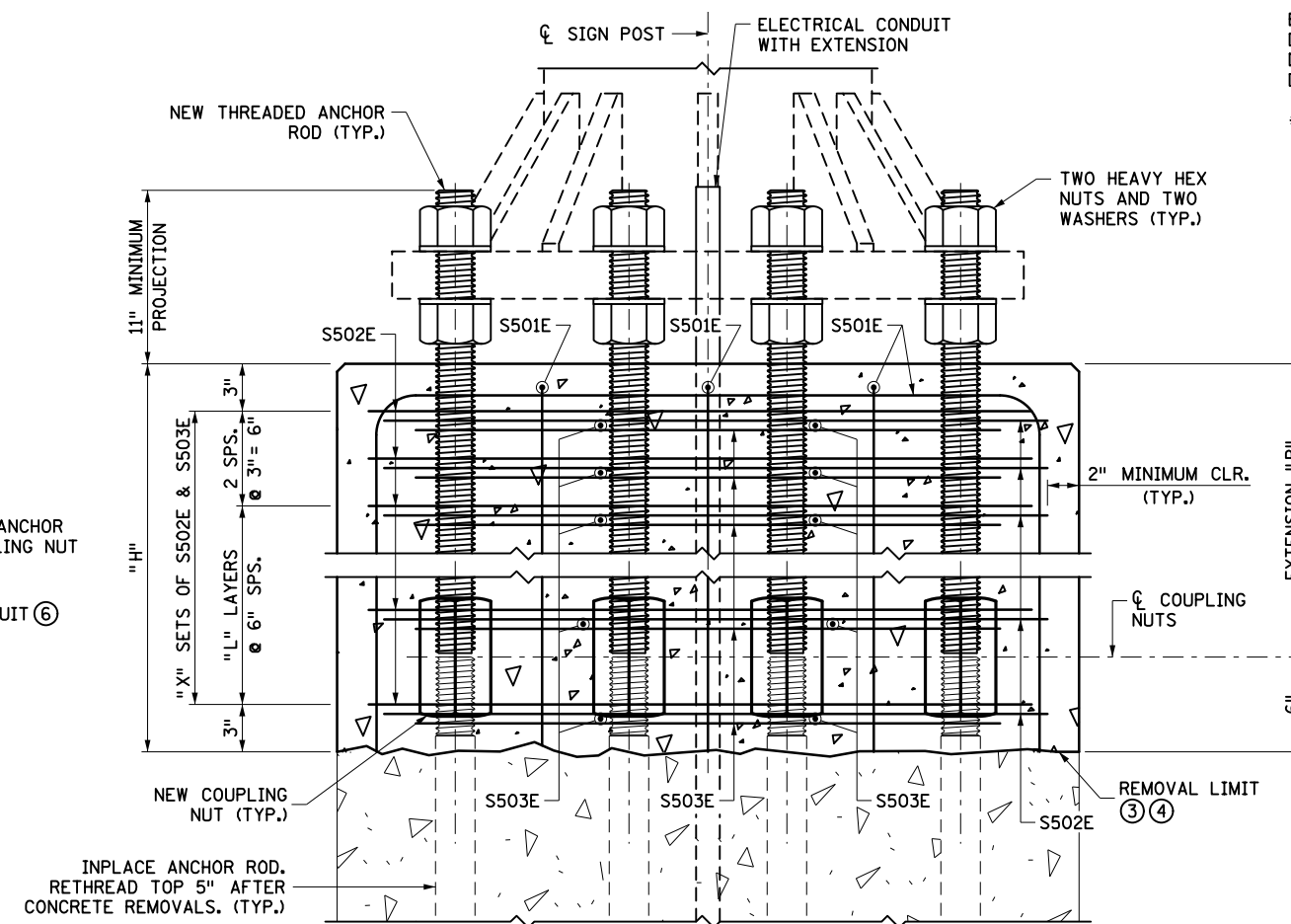
- ① SAWCUT PEDESTAL PERIMETER WITHOUT CUTTING ANY INPLACE REINFORCEMENT BARS BEFORE REMOVING CONCRETE. ALL INPLACE REINFORCEMENT BARS TO REMAIN. CLEAN AND STRAIGHTEN INPLACE REINFORCEMENT.
- ② REMOVE UNSOUND CONCRETE.
- ③ CLEAN CONCRETE.
- ④ APPLY EPOXY BONDING AGENT BEFORE PLACING NEW CONCRETE.
- ⑤ INPLACE ANCHOR RODS WITH MINIMAL OR NO DETERIORATION MAY REMAIN WITHOUT CUTTING IF COMPATIBLE WITH THE FOUNDATION EXTENSION. PROVIDE 2" MINIMUM COVER FOR COUPLING NUTS.
- ⑥ EXTEND EXISTING CONDUIT AS NEEDED.
- ⑦ 2 1/2" DIAMETER ANCHOR ROD. FIELD VERIFY.

EXTENSION DIMENSIONS AND QUANTITIES									
EXTENSION, "P"	"H"	"X"	"L"	"B"	"C"	"D"	"E"	CONCRETE (CY)	REINF. STEEL (LBS.)
1' 0"	1' 6"	4	1	1' 3"	5' 10"	8	16	0.86	188
1' 6"	2' 0"	5	2	1' 9"	6' 10"	10	20	1.14	232
2' 0"	2' 6"	6	3	2' 3"	7' 10"	12	24	1.43	276

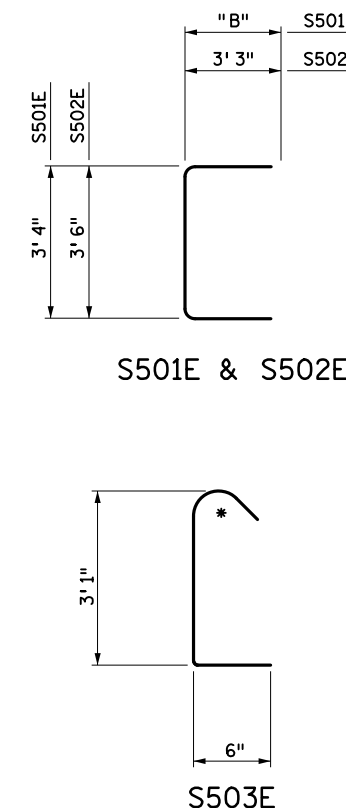
**BAR BENDING DIAGRAMS**

BENT BAR DIMENSIONS GIVEN ARE OUT-TO-OUT. DETERMINE ACTUAL BAR LENGTHS BASED ON THE DETAIL DIMENSIONS SHOWN IN THE BAR BENDING DIAGRAMS.

\* DENOTES STANDARD STIRRUP HOOK.



**SECTION A-A**  
INPLACE REINFORCEMENT NOT SHOWN FOR CLARITY



BILL OF REINFORCEMENT				
BAR NO.	LENGTH	SHAPE	LOCATION	
S501E	6	"C"	VERTICAL TIE	
S502E	"D"	10' 0"	HORIZONTAL TIE	
S503E	"E"	4' 1"	HORIZONTAL TIE	

LEAD EXPERT OFFICE  
KEVIN WESTERN  
STATE BRIDGE ENGINEER

OVERHEAD SIGN STRUCTURES FOUNDATION EXTENSION  
DESIGN D EXTENSION DETAILS - TYPE 5-6 POSTS

APPROVED: 01-15-2021  
REVISED:

THOMAS STYRBICKI  
STATE DESIGN ENGINEER

STANDARD PLAN  
5-297.780

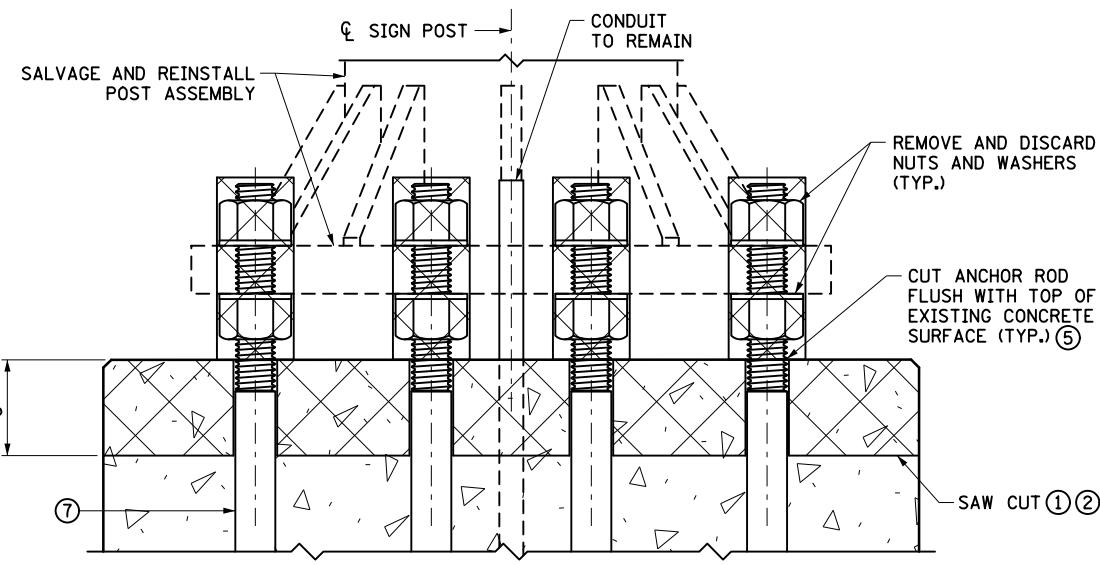
1 OF 2



STANDARD PLAN

STATE PROJ. NO.  
TRUNK HWY.

SHEET NO.  
TOTAL SHEETS



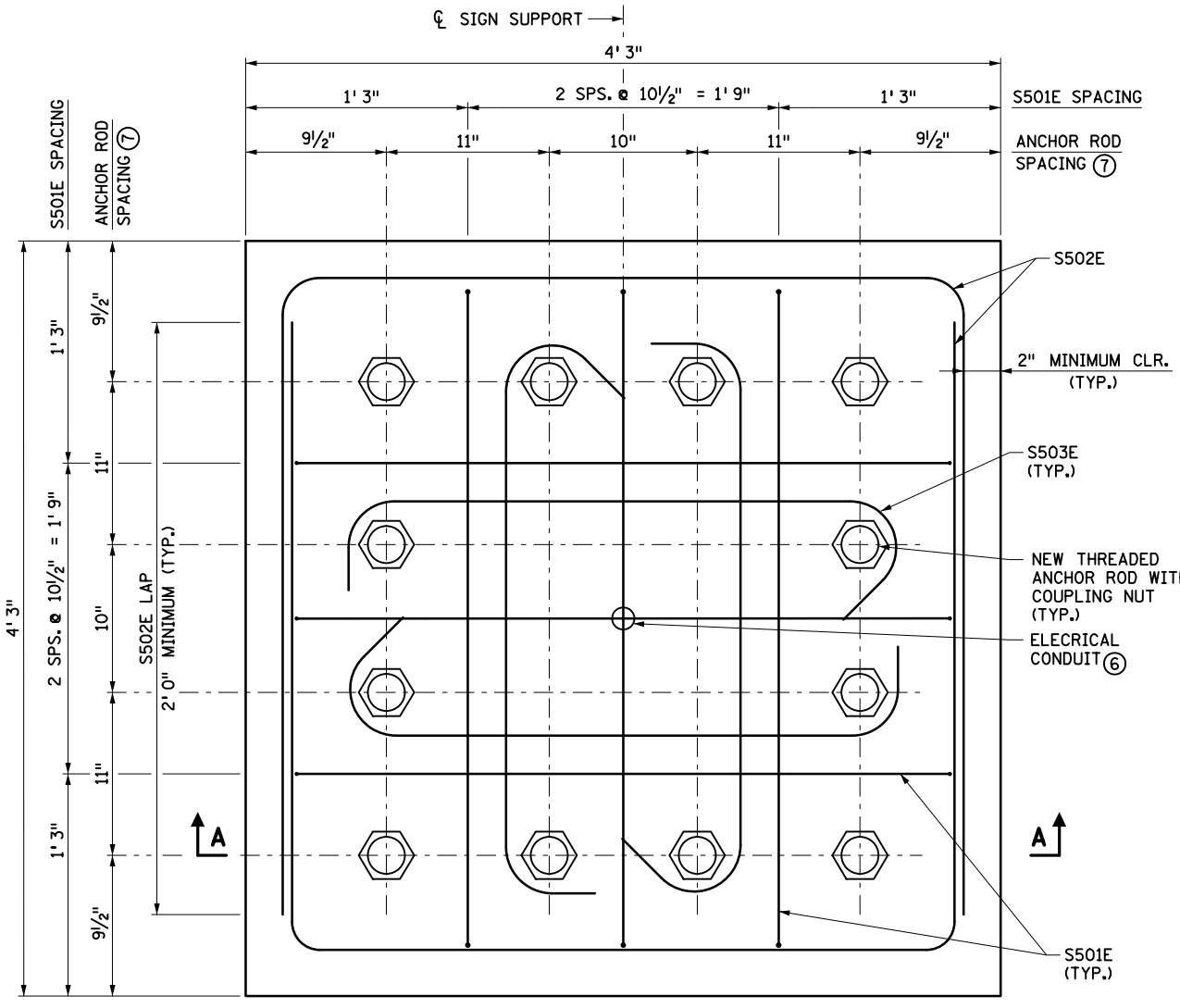
**INPLACE ELEVATION AND REMOVALS**  
INPLACE REINFORCEMENT NOT SHOWN FOR CLARITY

**NOTES:**

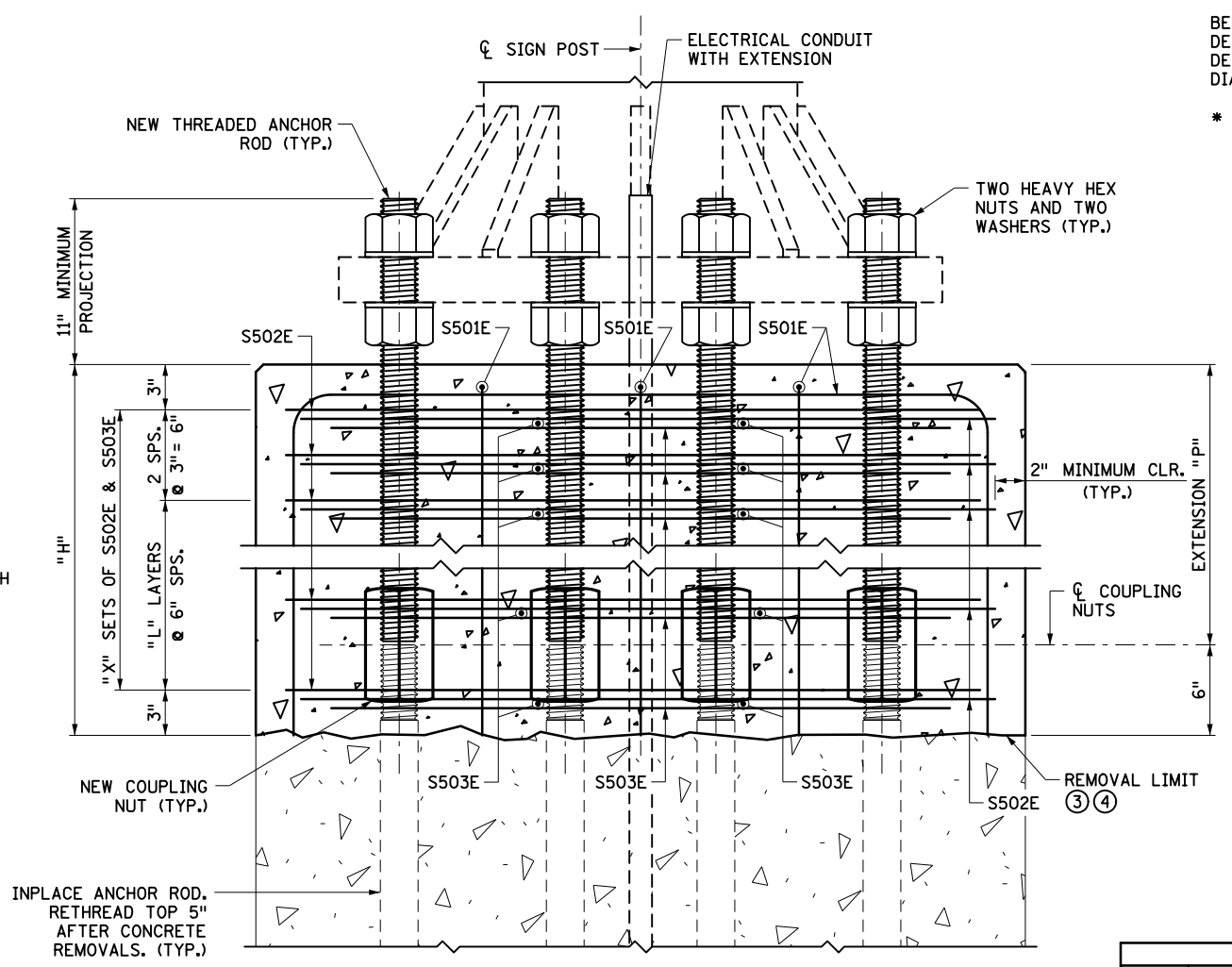
- ☒ DENOTES REMOVAL
- DIMENSIONS FOR NEW WORK BASED ON INPLACE BOLT DIMENSIONS.
- FIELD-VERIFY FOR LENGTH OF REQUIRED THREADED ANCHOR ROD EXTENSION.
- FIELD-ADJUST REBAR LOCATIONS TO AVOID CONDUITS.
- PROVIDE CONCRETE IN ACCORDANCE WITH SPEC. 2461, MIX 3G52.
- CONSTRUCT EXTENSION IN ACCORDANCE WITH THE PLAN, SPEC. 2401, AND SPEC. 2471.
- QUANTITIES PROVIDED ARE FOR ONE POST BASE EXTENSION. REBAR QUANTITIES ARE PROVIDED FOR REFERENCE ONLY.
- MINIMUM FOUNDATION EXTENSION IS 1' 0". EXTEND FOUNDATION 1' 0", 1' 6", OR 2' 0" AS REQUIRED. VERIFY WITH THE ENGINEER.
- PROVIDE COUPLING NUTS IN ACCORDANCE WITH ASTM A563 GRADE A AND GALVANIZE IN ACCORDANCE WITH SPEC. 3392. SEE SPECIAL PROVISION FOR SPECIAL INSPECTION OF COUPLING NUT INSTALLATION.
- FURNISH TYPE B ANCHOR RODS IN ACCORDANCE WITH SPEC. 3385.
- FURNISH EPOXY-COATED REINFORCING BARS IN ACCORDANCE WITH SPEC. 3301.

- ① SAWCUT PEDESTAL PERIMETER WITHOUT CUTTING ANY INPLACE REINFORCEMENT BARS BEFORE REMOVING CONCRETE. ALL INPLACE REINFORCEMENT BARS TO REMAIN. CLEAN AND STRAIGHTEN INPLACE REINFORCEMENT.
- ② REMOVE UNSOUND CONCRETE.
- ③ CLEAN CONCRETE.
- ④ APPLY EPOXY BONDING AGENT BEFORE PLACING NEW CONCRETE.
- ⑤ INPLACE ANCHOR RODS WITH MINIMAL OR NO DETERIORATION MAY REMAIN WITHOUT CUTTING IF COMPATIBLE WITH THE FOUNDATION EXTENSION. PROVIDE 2" MINIMUM COVER FOR COUPLING NUTS.
- ⑥ EXTEND EXISTING CONDUIT AS NEEDED.
- ⑦ 2 1/2" DIAMETER ANCHOR ROD. FIELD VERIFY.

EXTENSION DIMENSIONS AND QUANTITIES									
EXTENSION, "P"	"H"	"X"	"L"	"B"	"C"	"D"	"E"	CONCRETE (CY)	REINF. STEEL (LBS.)
1' 0"	1' 6"	4	1	1' 3"	6' 2"	8	16	1.01	198
1' 6"	2' 0"	5	2	1' 9"	7' 2"	10	20	1.34	245
2' 0"	2' 6"	6	3	2' 3"	8' 2"	12	24	1.68	291



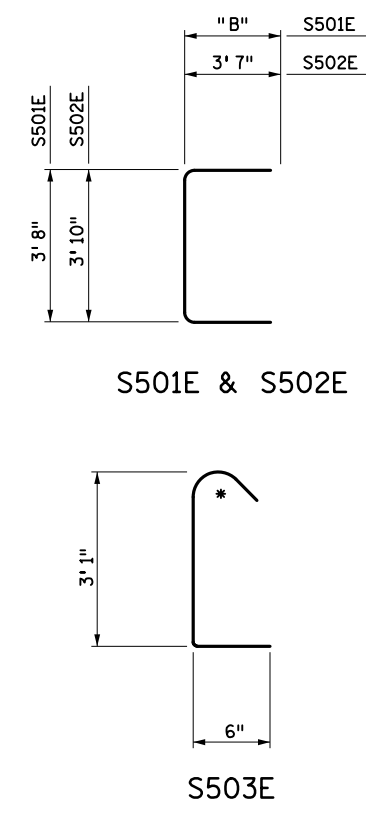
**NEW CONSTRUCTION PLAN VIEW**



**SECTION A-A**  
INPLACE REINFORCEMENT NOT SHOWN FOR CLARITY

**BAR BENDING DIAGRAMS**

BENT BAR DIMENSIONS GIVEN ARE OUT-TO-OUT. DETERMINE ACTUAL BAR LENGTHS BASED ON THE DETAIL DIMENSIONS SHOWN IN THE BAR BENDING DIAGRAMS.  
\* DENOTES STANDARD STIRRUP HOOK.



BILL OF REINFORCEMENT				
BAR	NO.	LENGTH	SHAPE	LOCATION
S501E	6	"C"	U	VERTICAL TIE
S502E	"D"	11' 0"	U	HORIZONTAL TIE
S503E	"E"	4' 1"	U	HORIZONTAL TIE

LEAD EXPERT OFFICE  
KEVIN WESTERN  
STATE BRIDGE ENGINEER

OVERHEAD SIGN STRUCTURES FOUNDATION EXTENSION  
DESIGN D EXTENSION DETAILS - TYPE 5-6 POSTS

APPROVED: 01-15-2021  
REVISED:

THOMAS STYRBICKI  
STATE DESIGN ENGINEER

STANDARD PLAN  
5-297.780  
2 OF 2



STANDARD PLAN

STATE PROJ. NO.  
TRUNK HWY.  
SHEET NO.  
TOTAL SHEETS