

SIGNAL HEAD CHART

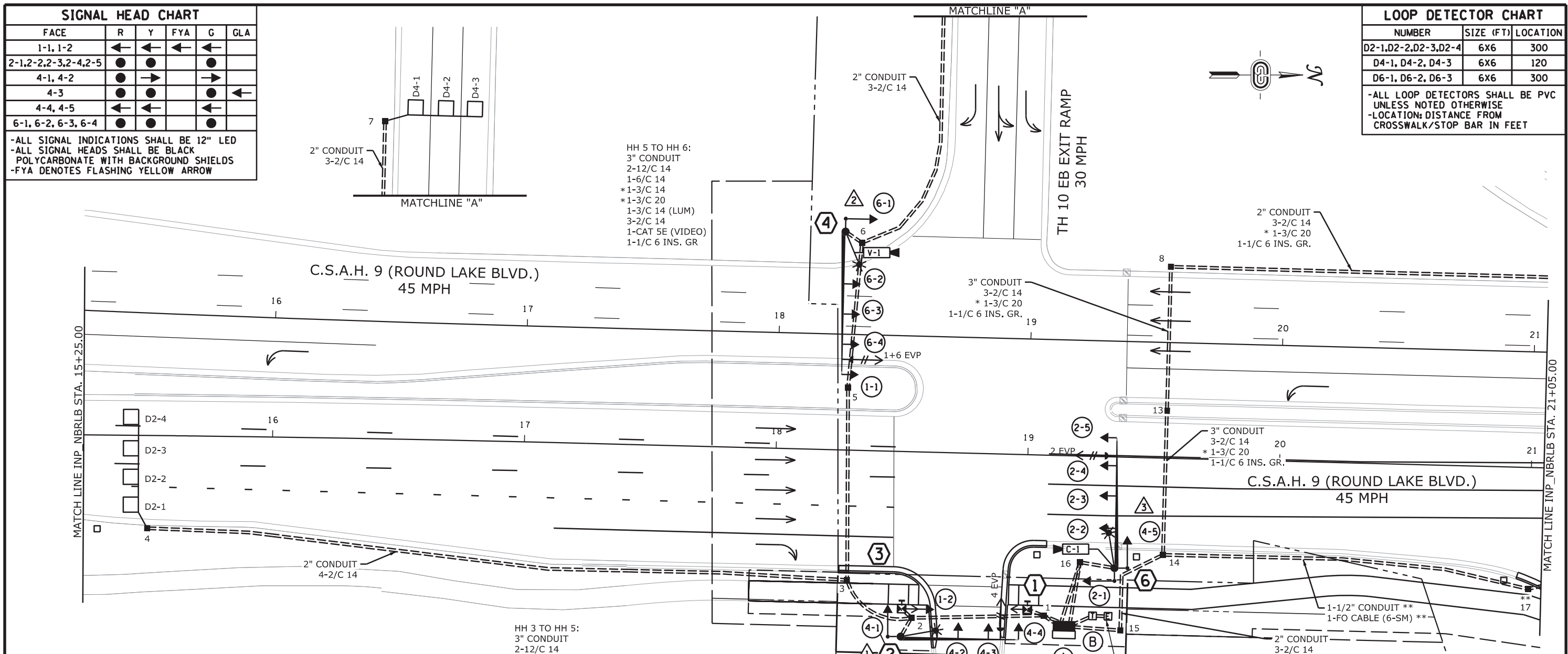
FACE	R	Y	FYA	G	GLA
1-1, 1-2	←	←	←	←	
2-1, 2-2, 2-3, 2-4, 2-5	●	●	●	●	
4-1, 4-2	●	→		→	
4-3	●	●		●	←
4-4, 4-5	←	←	←	←	
6-1, 6-2, 6-3, 6-4	●	●		●	

-ALL SIGNAL INDICATIONS SHALL BE 12" LED
 -ALL SIGNAL HEADS SHALL BE BLACK POLYCARBONATE WITH BACKGROUND SHIELDS
 -FYA DENOTES FLASHING YELLOW ARROW

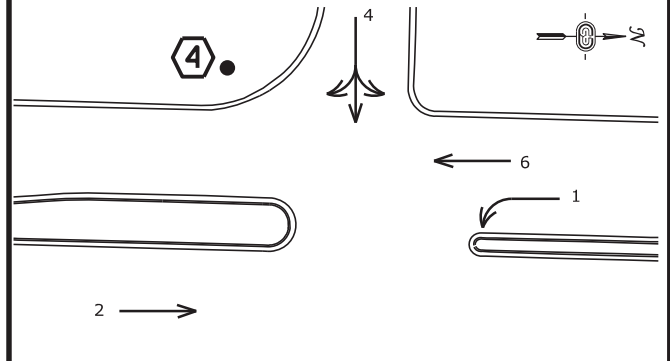
LOOP DETECTOR CHART

NUMBER	SIZE (FT)	LOCATION
D2-1, D2-2, D2-3, D2-4	6X6	300
D4-1, D4-2, D4-3	6X6	120
D6-1, D6-2, D6-3	6X6	300

-ALL LOOP DETECTORS SHALL BE PVC UNLESS NOTED OTHERWISE
 -LOCATION: DISTANCE FROM CROSSWALK/STOP BAR IN FEET



CONTROLLER PHASING, PEDESTRIAN INDICATIONS AND PUSH BUTTONS



PEDESTRIAN PUSH BUTTONS SHALL BE LOCATED AS SHOWN ABOVE

SIGNAL SYSTEM OPERATION

- THE SIGNAL SYSTEM FLASH MODE IS ALL RED.
- NORMAL OPERATION IS 4 PHASE, WITH PHASE(S) 1 BEING FLASHING YELLOW ARROWS BY TIME OF DAY.
- PHASES 2 AND 6 SHALL BE ON VEHICLE RECALL.

SYSTEM ID: 4035906 T.E. 23876
 METER ADDRESS: 12921 ROUND LAKE BLVD
 OLD SYSTEM ID: 1735929 (21854)

HH 3 TO HH 5:
 3" CONDUIT
 2-12/C 14
 1-6/C 14
 *1-3/C 14
 *1-3/C 20
 1-3/C 14 (LUM)
 3-2/C 14
 1-CAT 5E (VIDEO)
 1-1/C 6 INS. GR

HH 2 TO HH 3:
 3" CONDUIT
 2-12/C 14
 1-6/C 14
 *1-3/C 14
 *1-3/C 20
 1-3/C 14 (LUM)
 7-2/C 14
 1-CAT 5E (VIDEO)
 1-1/C 6 INS. GR

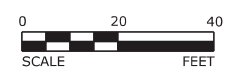
HH 1 TO HH 2:
 3" CONDUIT
 2-12/C 14
 1-6/C 14
 *1-3/C 14
 *1-3/C 20
 1-3/C 14 (LUM)
 7-2/C 14
 1-CAT 5E (VIDEO)
 1-1/C 6 INS. GR

HH 1 TO HH 2:
 3" CONDUIT
 3-12/C 14
 1-4/C 14
 *1-3/C 14
 *1-3/C 20
 1-2/C 14
 1-3/C 14 (LUM)

- NOTES:**
- SEE SPECIAL PROVISIONS FOR STATE FURNISHED MATERIALS.
 - ENSURE THE EXACT LOCATION OF THE HANDHOLES, POLES, LOOP DETECTORS AND EQUIPMENT PAD ARE VERIFIED IN THE FIELD BY MNDOT OFFICE PERSONNEL.
 - THE CONTRACTOR IS RESPONSIBLE FOR COORDINATING THE CONNECTION OF THE POWER FOR THE TRAFFIC SIGNAL SYSTEM.
 - FOR TYPE D SIGNS SEE DETAIL SHEET. ALL SIGNS REQUIRED ARE INCLUDED IN SIGNAL SYSTEM "A" PAY ITEM.
 - FOR PAVEMENT MARKINGS SEE PAVEMENT MARKING PLANS.
 - FOR CONSTRUCTION OF PEDESTRIAN CURB RAMPS, CONCRETE WALK AND MEDIAN WORK SEE INTERSECTION DETAIL SHEETS.
 - THIS PLAN SPECIFIES CONDUIT SIZES, TYPES, AND GENERAL LOCATIONS. THE EXACT LOCATIONS WILL BE DETERMINED IN THE FIELD. CONDUITS UNDER THE ROADWAYS REQUIRE BORING.
 - USE PVC OR HDPE FOR ALL NEW CONDUIT.
 - CONDUIT SIZES ARE NOMINAL DIAMETER.
 - ALL WIRES LISTED ARE AWG (AMERICAN WIRE GAUGE).
 - ITEMS DENOTED WITH AN * ARE INCLUDED IN PAYMENT FOR THE EVP SYSTEM "A" PAY ITEM.
 - ITEMS DENOTED WITH AN ** ARE INCLUDED IN PAYMENT FOR THE TRAFFIC CONTROL INTERCONNECT SYSTEM "A" PAY ITEM.

USER: kmidhuth
 PEN TABLE: cfd021577_planset.tbl
 FILE: S:\PROJECTS\TRANS\0309_MNDOT\T-005556\Design\SP021577_RoundLakeBlvd_TH10\Road_Design\Sheets\cd021577\NDR\Bldgn 11 - Signal Plan Layout A
 PLOT DRIVER: pdf_bw_11x17only.plt
 PLOT DATE: 10/19/2020 9:27:42 AM

REV. NO.	DATE	BY	CHK	DESCRIPTION



I HEREBY CERTIFY THAT THIS PLAN, SPECIFICATION, OR REPORT WAS PREPARED BY ME OR UNDER MY DIRECT SUPERVISION AND THAT I AM A DULY LICENSED PROFESSIONAL ENGINEER UNDER THE LAWS OF THE STATE OF MINNESOTA.

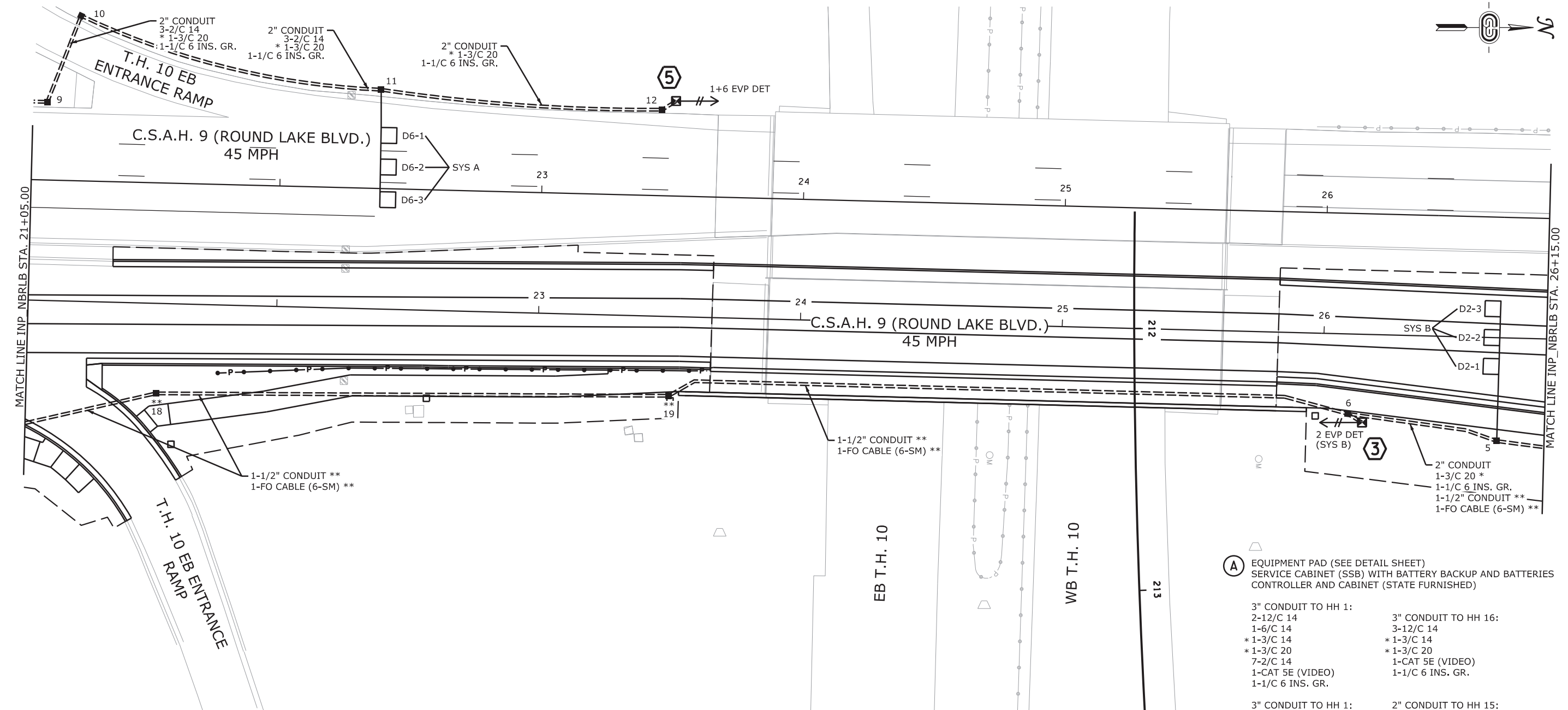
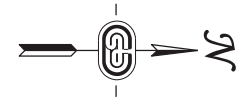
Brian P. Vitek
 NAME: BRIAN P. VITEK LIC. NO. 40444 DATE: 10/19/2020

DESIGNED: BPV
 DRAWN: BPV
 CHECKED: KEM



TRAFFIC CONTROL SIGNAL SYSTEM A - SOUTH RAMP
 INTERSECTION LAYOUT
 S.A.P. 002-609-020, S.A.P. 114-020-056
 S.P. 0215-77 (TH 10)

SHEET 159 OF 175
 PLAN PAGE 10 of 26



- 1** PEDESTAL FOUNDATION
10' PEDESTAL POLE PLUS BASE
1-STRAIGHT MOUNT C.D. PED HEAD
AT 0 DEG
1-APS PB AND SIGN (RT ARROW) (PB2-2)
AND APS PB MOUNTING SPACERS
3" CONDUIT TO HH 1:
1-4/C 14
1-2/C 14
1-1/C 6 INS. GR.

- 2** PA100 POLE FOUNDATION
TYPE PA100-A-45-D40-9 DAVIT AT 350 DEG (STATE FURNISHED)
1-ANGLE MOUNT SIGNAL OVERHEAD AT 0'
2-STRAIGHT MOUNT SIGNALS OVERHEAD AT 11' AND 23'
1-ANGLE MOUNT SIGNAL AT 180 DEG
1-ONE WAY EVP DETECTOR AND
CONFIRMATORY LIGHT (PHASE 4)
LUMINAIRE LED (FOR 40' MOUNTING HEIGHT)
1-TYPE D SIGN (D-1) (SEE SIGN DETAILS)
3" CONDUIT TO HH 2:
2-12/C 14
* 1-3/C 14
* 1-3/C 20
1-3/C 14 (LUM)
1-1/C 6 INS. GR.

- 3** PEDESTAL FOUNDATION
15' PEDESTAL POLE PLUS BASE
1-STRAIGHT MOUNT SIGNAL HEAD
AT 0 DEG
1-STRAIGHT MOUNT C.D. PED HEAD
AT 0 DEG
1-APS PB AND SIGN (LT ARROW) (PB2-1)
AND APS PB MOUNTING SPACERS
3" CONDUIT TO HH 2:
1-12/C 14
1-4/C 14
1-2/C 14
1-1/C 6 INS. GR.

- 4** PA100 POLE FOUNDATION
TYPE PA100-A-55-D40-9 DAVIT AT 350 DEG (STATE FURNISHED)
1-ANGLE MOUNT SIGNAL OVERHEAD AT 0'
3-STRAIGHT MOUNT SIGNALS OVERHEAD
AT 11', 23' AND 35'
1-ANGLE MOUNT SIGNAL AT 180 DEG
1-ONE WAY EVP DETECTOR AND
CONFIRMATORY LIGHT (PHASE 1+6)
1-VIDEO DETECTION CAMERA (V-1)
(STATE FURNISHED)
LUMINAIRE LED (FOR 40' MOUNTING HEIGHT)
1-R10-X12 SIGN ADJACENT TO HEAD (1-1)
3" CONDUIT TO HH 6:
2-12/C 14
1-6/C 14
* 1-3/C 14
* 1-3/C 20
1-3/C 14 (LUM)
1-CAT 5E (VIDEO)
1-1/C 6 INS. GR.

- 5** PEDESTAL FOUNDATION
10' PEDESTAL POLE PLUS BASE
1-ONE WAY EVP DETECTOR
(PHASE 1+6)
2" CONDUIT TO HH 12:
* 1-3/C 20
1-1/C 6 INS. GR.

- 6** PA100 POLE FOUNDATION
TYPE PA100-A-50-X350/CAM 400 EXTENSION
DAVIT AT 350 DEG (STATE FURNISHED)
1-ANGLE MOUNT SIGNAL OVERHEAD AT 0'
3-STRAIGHT MOUNT SIGNALS OVERHEAD
AT 11', 23' AND 35'
2-ANGLE MOUNT SIGNALS AT 90 AND 180 DEG
1-ONE WAY EVP DETECTOR AND
CONFIRMATORY LIGHT (PHASE 2)
1-IP CAMERA (C-1) AND CAMERA MOUNT
(STATE FURNISHED)
MOUNTED ON CAM 400 EXTENSION
LUMINAIRE LED (FOR 40' MOUNTING HEIGHT)
3" CONDUIT TO HH 16:
3-12/C 14
* 1-3/C 14
* 1-3/C 20
1-3/C 14 (LUM)
1-CAT 5E (VIDEO)
1-1/C 6 INS. GR.

- A** EQUIPMENT PAD (SEE DETAIL SHEET)
SERVICE CABINET (SSB) WITH BATTERY BACKUP AND BATTERIES
CONTROLLER AND CABINET (STATE FURNISHED)

- 3" CONDUIT TO HH 1:
2-12/C 14
1-6/C 14
* 1-3/C 14
* 1-3/C 20
7-2/C 14
1-CAT 5E (VIDEO)
1-1/C 6 INS. GR.
- 3" CONDUIT TO HH 16:
3-12/C 14
* 1-3/C 14
* 1-3/C 20
2-2/C 14

- 3" CONDUIT TO HH 1:
3-12/C 14
2-4/C 14
* 1-3/C 14
* 1-3/C 20
- 2" CONDUIT TO HH 15:
3-2/C 14
* 1-3/C 20
1-1/C 6 INS. GR.

- GROUND WIRE AND GROUND ROD - MIN 8' OUT FROM PAD
2-2" AND 1-3" CONDUIT STUBBED OUT (CAPPED BOTH ENDS)
1-1/2" CONDUIT TO TO HH 15:
** 1-FO PIGTAIL (6-SM)
** CONTROLLER CABINET TO SERVICE CABINET:
2" CONDUIT
3-1/C 6
CONTROLLER CABINET TO SERVICE CABINET (COMMS):
2" CONDUIT
1-6PR 19

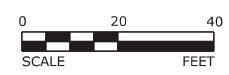
- SERVICE CABINET TO TO GROUND MOUNTED TRANSFORMER:
2" CONDUIT
3-1/C 2
- SERVICE CABINET TO HH 1:
2-3/C 14 (LUM)
- SERVICE CABINET TO HH 16:
1-3/C 14 (LUM)
- SERVICE CABINET TO EXTERNAL GR. RD:
1" CONDUIT
1-1/C 6 INS. GR.

- B** SOP - GROUND MOUNTED
TRANSFORMER (CONNEXUS ENERGY)
2" CONDUIT INTO SERVICE CABINET:
3-1/C 2

SYSTEM ID: 4035906 T.E. 23876
METER ADDRESS: 12921 ROUND LAKE BLVD
OLD SYSTEM ID: 1735929 (21854)

USER: mkahl
 PEN TABLE: c:\p021577_planset.tbl
 FILE: S:\PROJECTS\TRANS\0309_MidDOT\T-00556\Design\SP021577_RoundLakeBlvd_TH10\Road_Design\Sheets\c021577\NOB\Bldgn 12 - Signal Notes MATCHLINE A
 PLOT DRIVER: pdf_bw_11x17only.plt
 PLOT DATE: 11/4/2020 6:34:01 PM

REV. NO.	DATE	BY	CHK	DESCRIPTION



I HEREBY CERTIFY THAT THIS PLAN, SPECIFICATION, OR REPORT WAS PREPARED BY ME OR UNDER MY DIRECT SUPERVISION AND THAT I AM A DULY LICENSED PROFESSIONAL ENGINEER UNDER THE LAWS OF THE STATE OF MINNESOTA.

Brian P. Vitek
 NAME: BRIAN P. VITEK LIC. NO. 40444 DATE: 11/05/2020

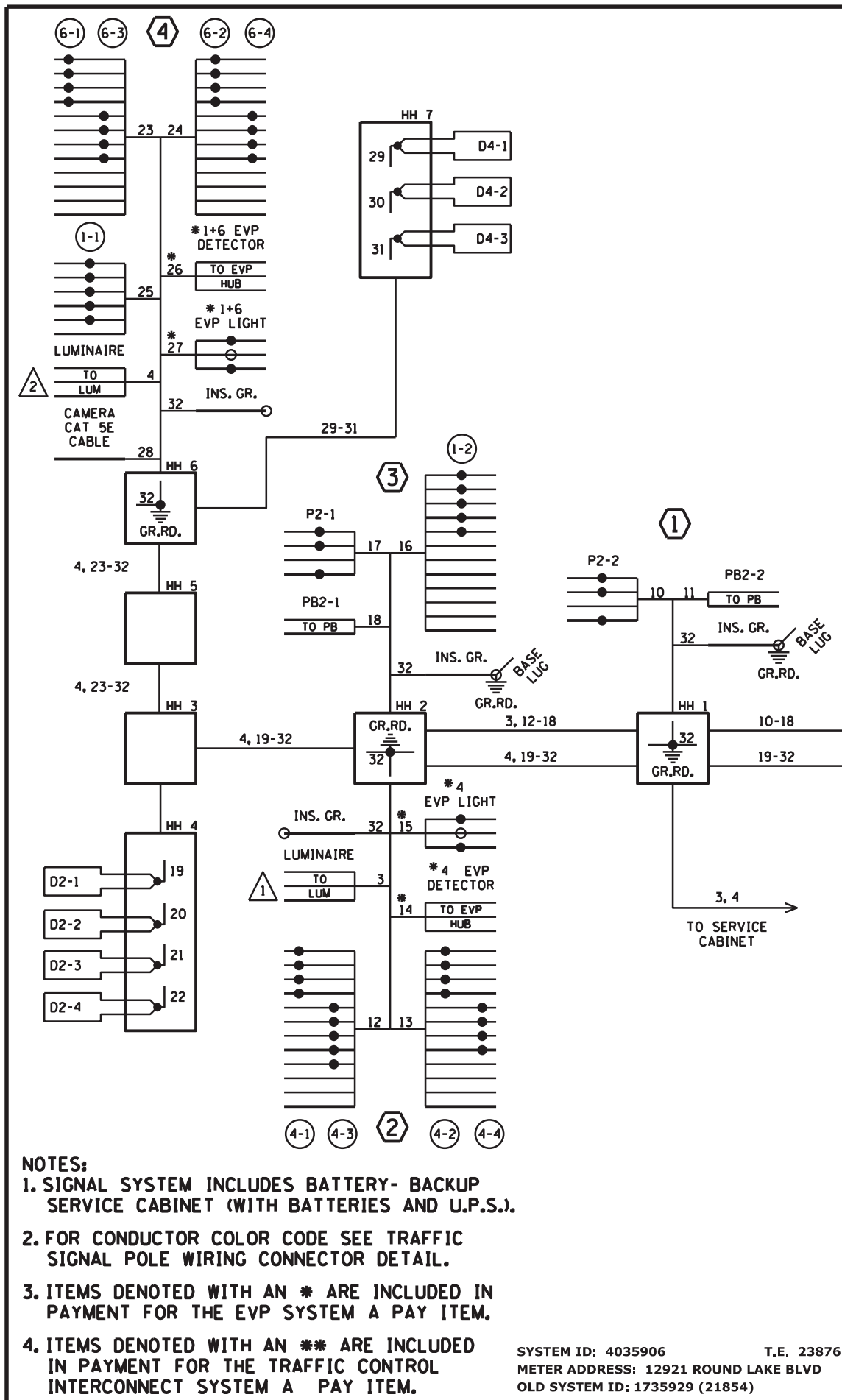
DESIGNED
BPV
DRAWN
BPV
CHECKED
KEM



TRAFFIC CONTROL SIGNAL SYSTEM A - SOUTH RAMP
 INTERSECTION NOTES / MATCHLINES PLAN PAGE 11 of 26
 S.A.P. 002-609-020, S.A.P. 114-020-056
 S.P. 0215-77 (TH 10)

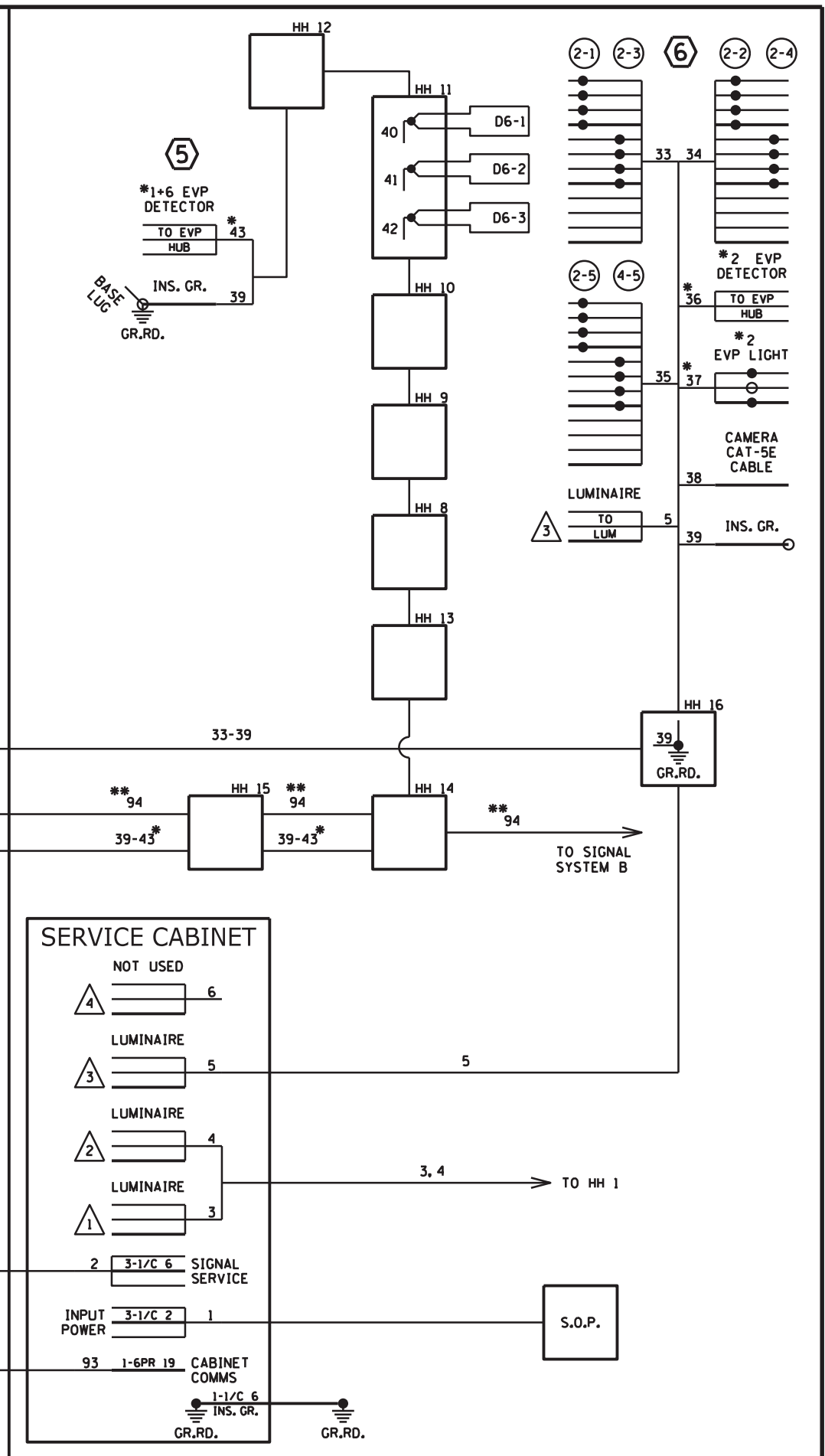
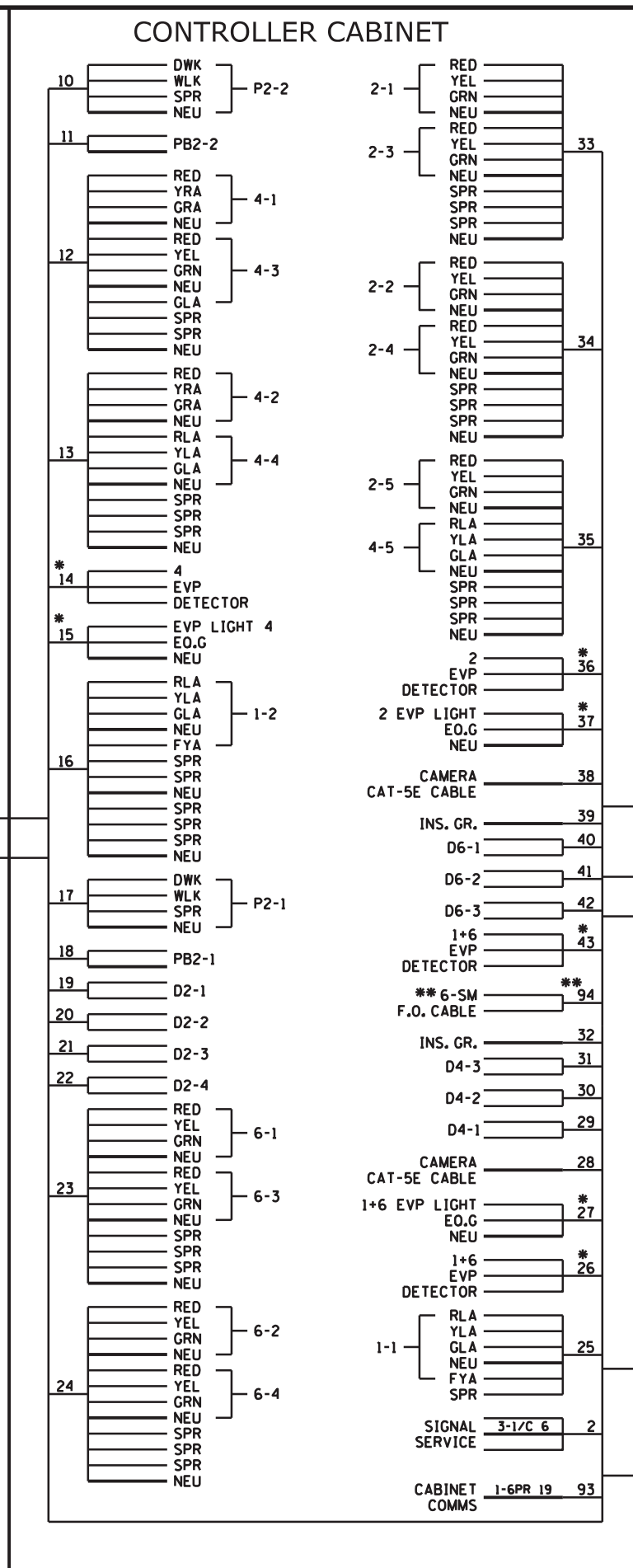
SHEET
160
OF
175

USER: mkahl
 PEN TABLE: cd021577_planset.tbl
 FILE: S:\PROJECTS\TRANS\0039_MidDOT\T-00556\Design\SP021577_RoundLakeBlvd_TH10\Road_Design\Sheets\cd021577\06Bldgn 13 - Signal Wiring A

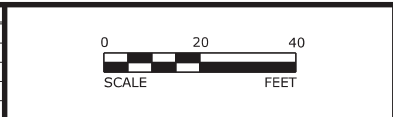


- NOTES:**
1. SIGNAL SYSTEM INCLUDES BATTERY- BACKUP SERVICE CABINET (WITH BATTERIES AND U.P.S.).
 2. FOR CONDUCTOR COLOR CODE SEE TRAFFIC SIGNAL POLE WIRING CONNECTOR DETAIL.
 3. ITEMS DENOTED WITH AN * ARE INCLUDED IN PAYMENT FOR THE EVP SYSTEM A PAY ITEM.
 4. ITEMS DENOTED WITH AN ** ARE INCLUDED IN PAYMENT FOR THE TRAFFIC CONTROL INTERCONNECT SYSTEM A PAY ITEM.

SYSTEM ID: 4035906 T.E. 23876
 METER ADDRESS: 12921 ROUND LAKE BLVD
 OLD SYSTEM ID: 1735929 (21854)



REV. NO.	DATE	BY	CHK	DESCRIPTION



I HEREBY CERTIFY THAT THIS PLAN, SPECIFICATION, OR REPORT WAS PREPARED BY ME OR UNDER MY DIRECT SUPERVISION AND THAT I AM A DULY LICENSED PROFESSIONAL ENGINEER UNDER THE LAWS OF THE STATE OF MINNESOTA.

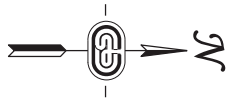
NAME: BRIAN P. VITEK LIC. NO. 40444 DATE: 11/05/2020

DESIGNED: BPV
 DRAWN: BPV
 CHECKED: KEM



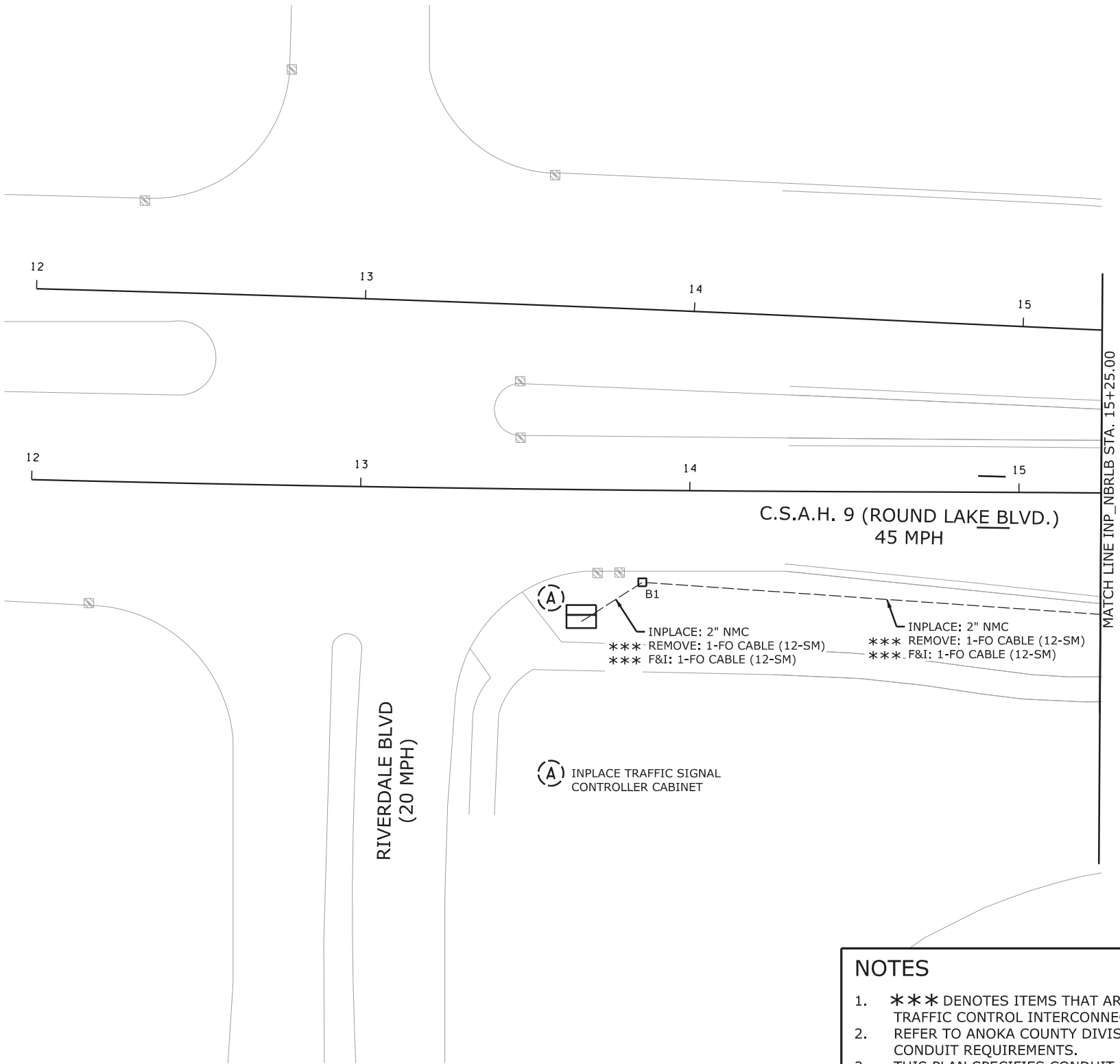
TRAFFIC CONTROL SIGNAL SYSTEM A - SOUTH RAMP
 FIELD WIRING DIAGRAM
 S.A.P. 002-609-020, S.A.P. 114-020-056
 S.P. 0215-77 (TH 10)

SHEET 161 OF 175
 PLAN PAGE 12 of 26



LEGEND

- HANDHOLE
- INPLACE HANDHOLE
- ==== CONDUIT
- INPLACE CONDUIT
- SIGNAL CABINET
- INPLACE SIGNAL CABINET



C.S.A.H. 9 (ROUND LAKE BLVD.)
45 MPH

RIVERDALE BLVD
(20 MPH)

MATCH LINE INP_NBR LB STA. 15+25.00

INPLACE: 2" NMC
*** REMOVE: 1-FO CABLE (12-SM)
*** F&I: 1-FO CABLE (12-SM)

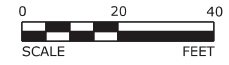
INPLACE: 2" NMC
*** REMOVE: 1-FO CABLE (12-SM)
*** F&I: 1-FO CABLE (12-SM)

(A) INPLACE TRAFFIC SIGNAL CONTROLLER CABINET

- NOTES**
1. *** DENOTES ITEMS THAT ARE INCLUDED IN PAYMENT FOR THE TRAFFIC CONTROL INTERCONNECT SYSTEM B PAY ITEM.
 2. REFER TO ANOKA COUNTY DIVISION SS FOR FIBER OPTIC CABLE AND CONDUIT REQUIREMENTS.
 3. THIS PLAN SPECIFIES CONDUIT SIZES, TYPES AND GENERAL LOCATIONS. THE EXACT LOCATIONS WILL BE DETERMINED IN THE FIELD. CONDUITS UNDER ROADWAYS REQUIRE BORING.
 4. USE PVC OR HDPE FOR ALL NEW CONDUIT.
 5. CONDUIT SIZES ARE NOMINAL DIAMETER.
 6. IT SHALL BE THE CONTRACTOR'S RESPONSIBILITY TO UTILIZE THE "ONE CALL EXCAVATION NOTICE SYSTEM" (TELEPHONE NUMBER 651-454-0002). THIS IS REQUIRED BY MINNESOTA STATUTE 216D.

PLOT DRIVER: pdf_bw_11x17only.pltcfq
 PLOT DATE: 11/5/2020 9:13:04 AM
 USER: mkahl
 PEN TABLE: cd021577_planset.tbl
 FILE: S:\PROJECTS\TRANS\0039_MnDOT\T-00556\Design\SP021577_RoundLakeBlvd_TH10\Road_Design\Sheets\cd021577\NBR\Bgn_1 - Interconnect Plan

REV. NO.	DATE	BY	CHK	DESCRIPTION



I HEREBY CERTIFY THAT THIS PLAN, SPECIFICATION, OR REPORT WAS PREPARED BY ME OR UNDER MY DIRECT SUPERVISION AND THAT I AM A DULY LICENSED PROFESSIONAL ENGINEER UNDER THE LAWS OF THE STATE OF MINNESOTA.

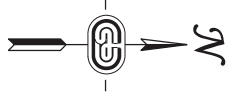
Brian P. Vitek
 NAME: BRIAN P. VITEK LIC. NO. 40444 DATE: 11/05/2020

DESIGNED
BPV
DRAWN
BPV
CHECKED
KEM



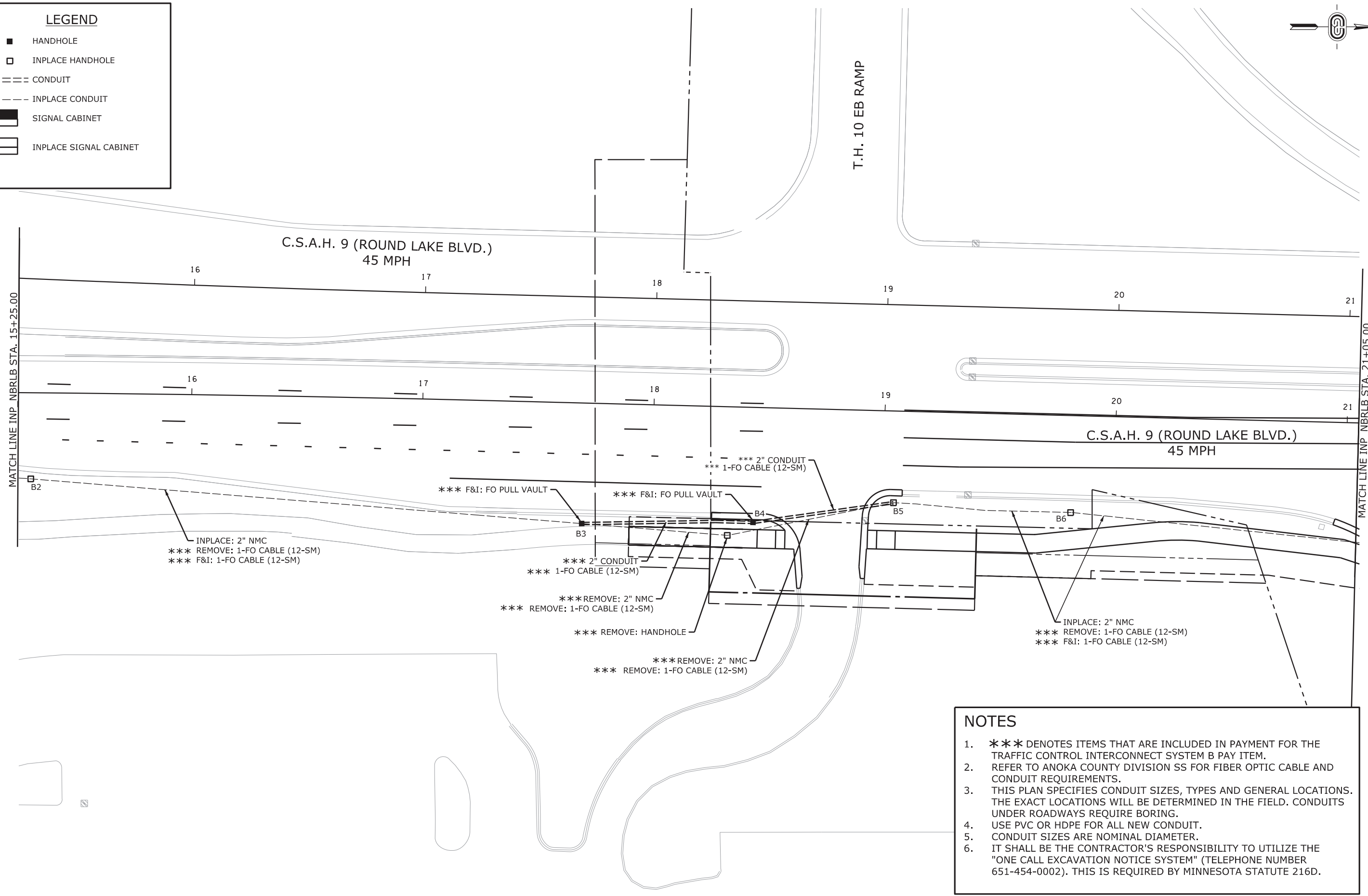
INTERCONNECT PLAN
 INTERCONNECT SYSTEM B PLAN PLAN PAGE 22 of 26
 S.P. 0215-77 (TH 10)
 S.A.P 002-609-020, S.A.P. 114-020-056

SHEET
171
OF
175



LEGEND

- HANDHOLE
- INPLACE HANDHOLE
- CONDUIT
- - - INPLACE CONDUIT
- SIGNAL CABINET
- INPLACE SIGNAL CABINET

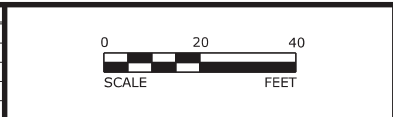


NOTES

- *** DENOTES ITEMS THAT ARE INCLUDED IN PAYMENT FOR THE TRAFFIC CONTROL INTERCONNECT SYSTEM B PAY ITEM.
- REFER TO ANOKA COUNTY DIVISION SS FOR FIBER OPTIC CABLE AND CONDUIT REQUIREMENTS.
- THIS PLAN SPECIFIES CONDUIT SIZES, TYPES AND GENERAL LOCATIONS. THE EXACT LOCATIONS WILL BE DETERMINED IN THE FIELD. CONDUITS UNDER ROADWAYS REQUIRE BORING.
- USE PVC OR HDPE FOR ALL NEW CONDUIT.
- CONDUIT SIZES ARE NOMINAL DIAMETER.
- IT SHALL BE THE CONTRACTOR'S RESPONSIBILITY TO UTILIZE THE "ONE CALL EXCAVATION NOTICE SYSTEM" (TELEPHONE NUMBER 651-454-0002). THIS IS REQUIRED BY MINNESOTA STATUTE 216D.

USER: mkahl
 PEN TABLE: cd021577_planset.tbl
 FILE: S:\PROJECTS\TRANS\0039_MnDOT\T-00556\Design\SP021577_RoundLakeBlvd_TH10\Road_Design\Sheets\cd021577\NOB\Bgn 2 - Interconnect Plan
 PLOT DRIVER: pdf_bw_11x17only.plt
 PLOT DATE: 11/5/2020 9:13:05 AM

REV. NO.	DATE	BY	CHK	DESCRIPTION



I HEREBY CERTIFY THAT THIS PLAN, SPECIFICATION, OR REPORT WAS PREPARED BY ME OR UNDER MY DIRECT SUPERVISION AND THAT I AM A DULY LICENSED PROFESSIONAL ENGINEER UNDER THE LAWS OF THE STATE OF MINNESOTA.

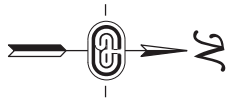
Brian P. Vitek
 NAME: BRIAN P. VITEK LIC. NO. 40444 DATE: 11/05/2020

DESIGNED: BPV
 DRAWN: BPV
 CHECKED: KEM



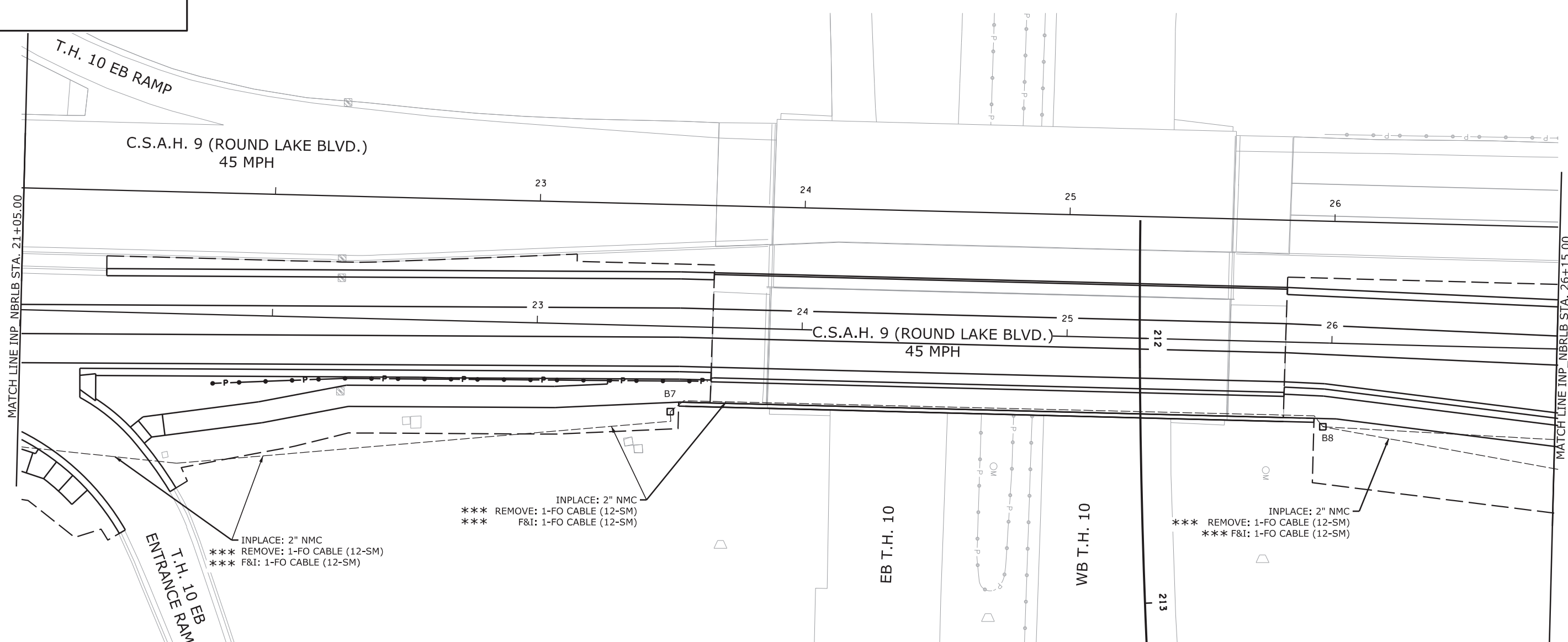
INTERCONNECT PLAN
 INTERCONNECT SYSTEM B PLAN PLAN PAGE 23 of 26
 S.P. 0215-77 (TH 10)
 S.A.P 002-609-020, S.A.P. 114-020-056

SHEET
 172
 OF
 175



LEGEND

- HANDHOLE
- INPLACE HANDHOLE
- ==== CONDUIT
- INPLACE CONDUIT
- SIGNAL CABINET
- INPLACE SIGNAL CABINET



INPLACE: 2" NMC
 *** REMOVE: 1-FO CABLE (12-SM)
 *** F&I: 1-FO CABLE (12-SM)

INPLACE: 2" NMC
 *** REMOVE: 1-FO CABLE (12-SM)
 *** F&I: 1-FO CABLE (12-SM)

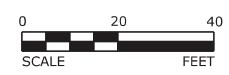
INPLACE: 2" NMC
 *** REMOVE: 1-FO CABLE (12-SM)
 *** F&I: 1-FO CABLE (12-SM)

NOTES

1. *** DENOTES ITEMS THAT ARE INCLUDED IN PAYMENT FOR THE TRAFFIC CONTROL INTERCONNECT SYSTEM B PAY ITEM.
2. REFER TO ANOKA COUNTY DIVISION SS FOR FIBER OPTIC CABLE AND CONDUIT REQUIREMENTS.
3. THIS PLAN SPECIFIES CONDUIT SIZES, TYPES AND GENERAL LOCATIONS. THE EXACT LOCATIONS WILL BE DETERMINED IN THE FIELD. CONDUITS UNDER ROADWAYS REQUIRE BORING.
4. USE PVC OR HDPE FOR ALL NEW CONDUIT.
5. CONDUIT SIZES ARE NOMINAL DIAMETER.
6. IT SHALL BE THE CONTRACTOR'S RESPONSIBILITY TO UTILIZE THE "ONE CALL EXCAVATION NOTICE SYSTEM" (TELEPHONE NUMBER 651-454-0002). THIS IS REQUIRED BY MINNESOTA STATUTE 216D.

USER: mkahl
 PEN TABLE: cd021577_planset.tbl
 FILE: S:\PROJECTS\TRANS\0039_MndOT\T-00556\Design\SP021577_RoundLakeBlvd_TH10\Road_Design\Sheets\cd021577\NOB\Bgn_3 - Interconnect Plan
 PLOT DRIVER: pdf_bw_11x17only.plt
 PLOT DATE: 11/5/2020 9:13:08 AM

REV. NO.	DATE	BY	CHK	DESCRIPTION



I HEREBY CERTIFY THAT THIS PLAN, SPECIFICATION, OR REPORT WAS PREPARED BY ME OR UNDER MY DIRECT SUPERVISION AND THAT I AM A DULY LICENSED PROFESSIONAL ENGINEER UNDER THE LAWS OF THE STATE OF MINNESOTA.

Brian P. Vitek
 NAME: BRIAN P. VITEK LIC. NO. 40444 DATE: 11/05/2020

DESIGNED: BPV
 DRAWN: BPV
 CHECKED: KEM

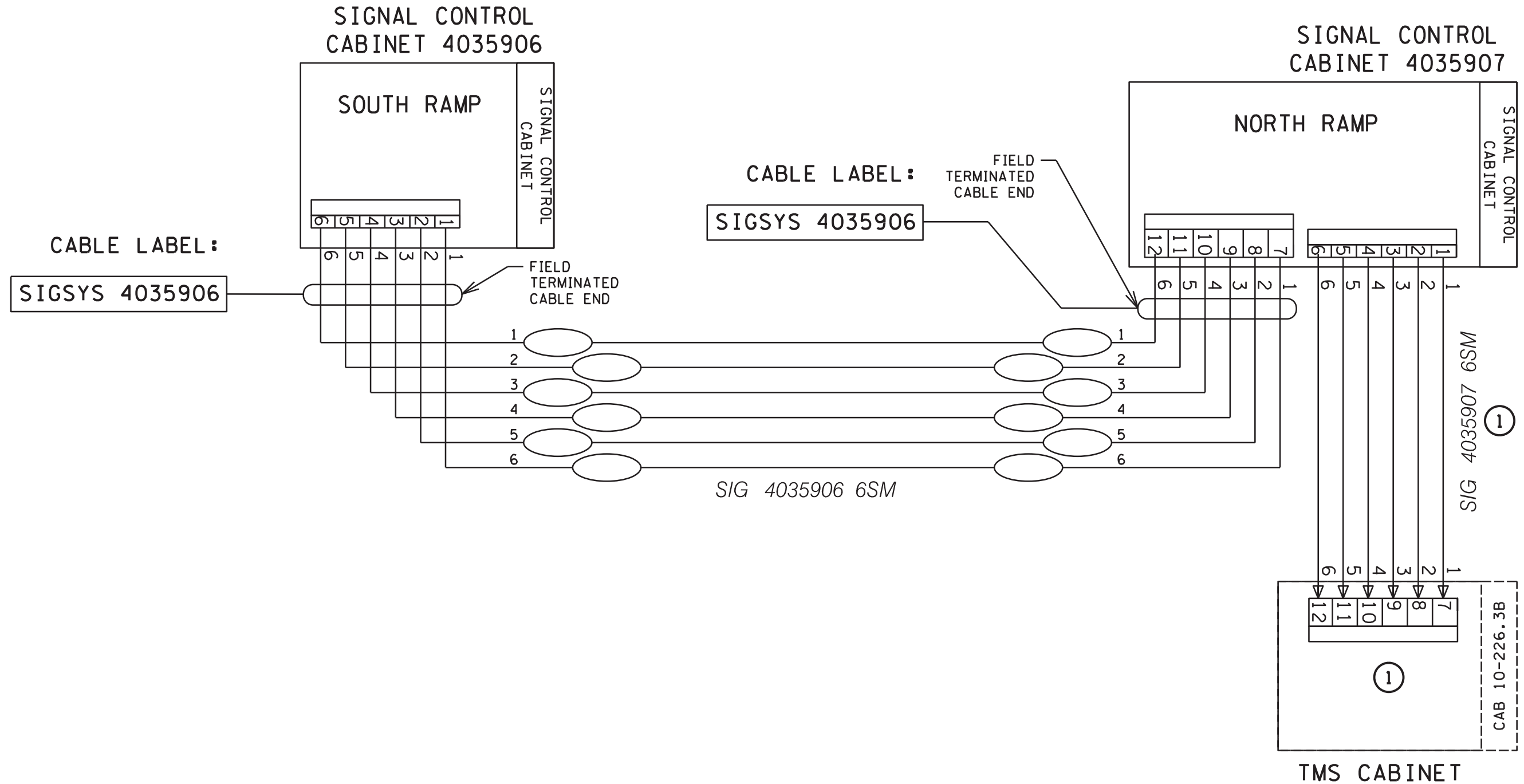


INTERCONNECT PLAN
 INTERCONNECT SYSTEM B PLAN PLAN PAGE 24 of 26
 S.P. 0215-77 (TH 10)
 S.A.P 002-609-020, S.A.P. 114-020-056

SHEET
 173
 OF
 175

FIBER OPTIC SCHEMATIC

(FOR SIGNAL COMMUNICATIONS)



① SEE TMS PLAN FOR DETAILS ON CONNECTING, TESTING AND SPLICING.

USER: kmiehlthun
 PEN TABLE: cd021577_planset.tbl
 FILE: S:\PROJECTS\TRANS\0039_MnDOT\T-00556\Design\SP021577_RoundLakeBvd_TH10\Road_Design\Sheets\cd021577\NOB\Bldgn 10 - Fiber Optic Schematic
 PLOT DRIVER: pdf_bw_11x17only.pltcfq
 PLOT DATE: 10/19/2020 9:27:40 AM

REV. NO.	DATE	BY	CHK	DESCRIPTION

I HEREBY CERTIFY THAT THIS PLAN, SPECIFICATION, OR REPORT WAS PREPARED BY ME OR UNDER MY DIRECT SUPERVISION AND THAT I AM A DULY LICENSED PROFESSIONAL ENGINEER UNDER THE LAWS OF THE STATE OF MINNESOTA.

NAME: BRIAN P. VITEK LIC. NO. 40444 DATE 10/19/2020

DESIGNED
BPV
DRAWN
BPV
CHECKED
KEM



TRAFFIC CONTROL SIGNAL SYSTEM
 FIBER OPTIC SCHEMATIC PLAN PAGE 9 of 26
 S.A.P. 002-609-020, S.A.P. 114-020-056
 S.P. 0215-77 (TH 10)

SHEET
158
OF
175