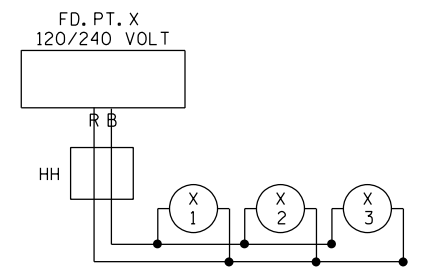
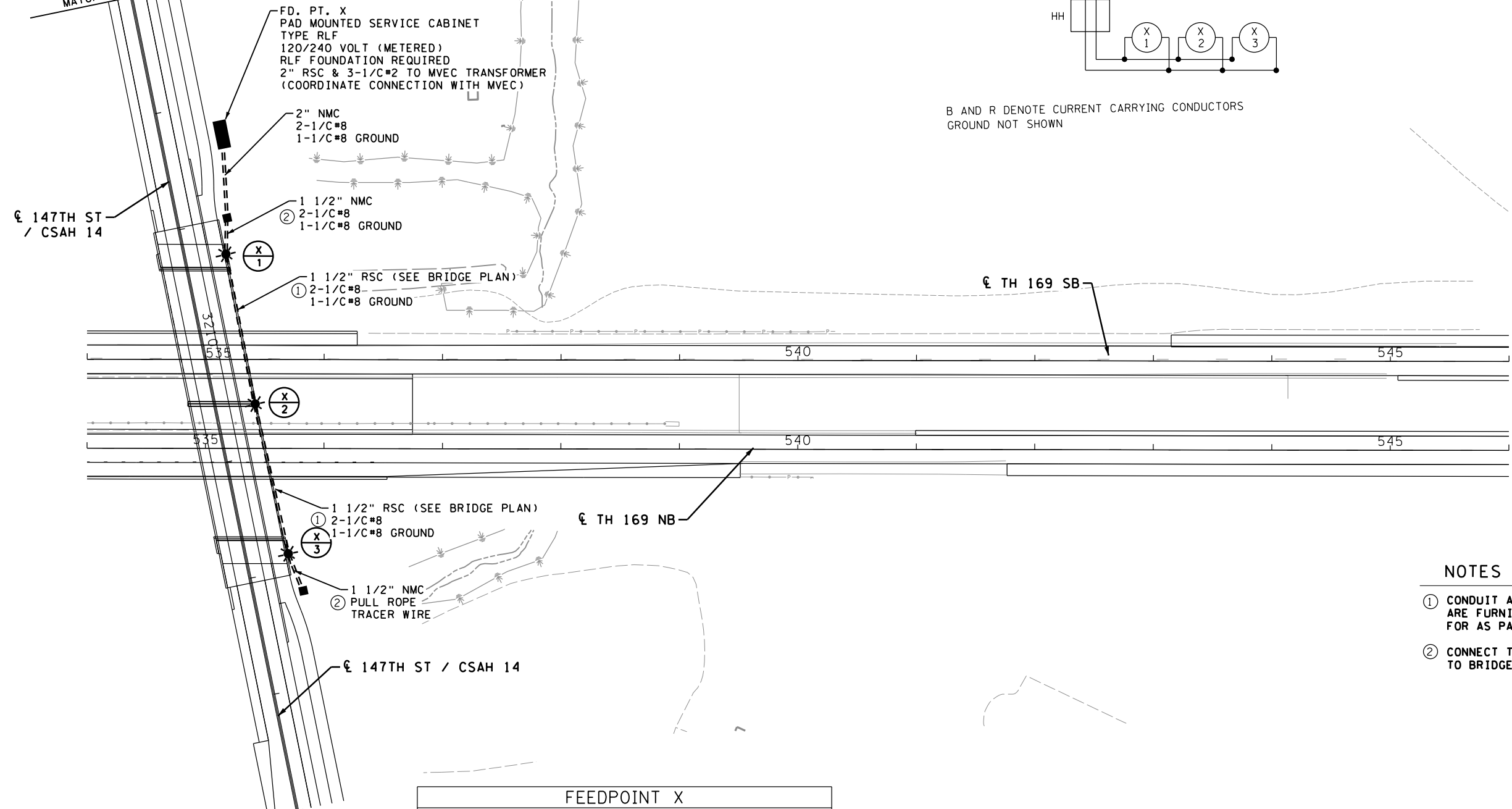


SEE SHEET 13.11  
MATCH LINE STA. 3207+00

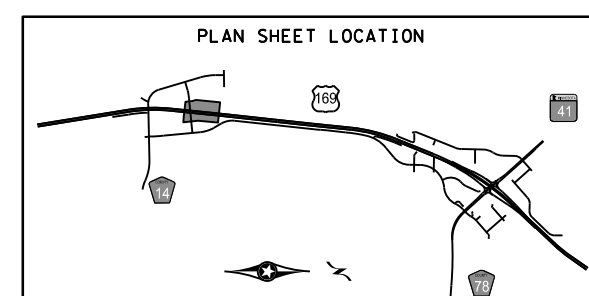


B AND R DENOTE CURRENT CARRYING CONDUCTORS  
GROUND NOT SHOWN

- NOTES**
- ① CONDUIT AND LIGHTING UNIT ANCHORAGES ARE FURNISHED, INSTALLED, AND PAID FOR AS PART OF THE BRIDGE CONTRACT.
  - ② CONNECT TO BRIDGE CONDUIT (REFER TO BRIDGE PLANS).

SEE LEGEND SHEET 13.04

FEEDPOINT X LIGHTING STANDARDS AND BASES						
NO.	STATION	LT	RT	LOCATION	TYPE	NOTES
1	3209+28	X		147TH ST	SPECIAL	②
2	3210+57	X		147TH ST	SPECIAL	②
2	3211+86	X		174TH ST	SPECIAL	②



DATE: 4/11/2018 9:03:42 AM  
PATH & FILENAME: K:\03212-040\Cad\Plan\cfd7005-121.lp04.dgn

NO.	DATE	BY	CHK	REVISIONS

Design By: ES  
Plan By: MF  
Checked By: ES  
Approved By: SD

I HEREBY CERTIFY THAT THIS PLAN WAS PREPARED BY ME OR UNDER MY DIRECT SUPERVISION AND THAT I AM A DULY LICENSED PROFESSIONAL ENGINEER UNDER THE LAWS OF THE STATE OF MINNESOTA.

*Sean Delmore*  
LICENSED PROFESSIONAL ENGINEER - SEAN DELMORE, PE  
DATE: 03/23/2018 40945



TH 169/TH 41/CSAH 78 DDI  
147th St. Overpass  
Scott County, Minnesota

LIGHTING PLAN  
S.P.7005-121 (TH 169), S.P.070-596-013, ET AL

SHEET  
13.05  
OF  
13.13  
SHEETS