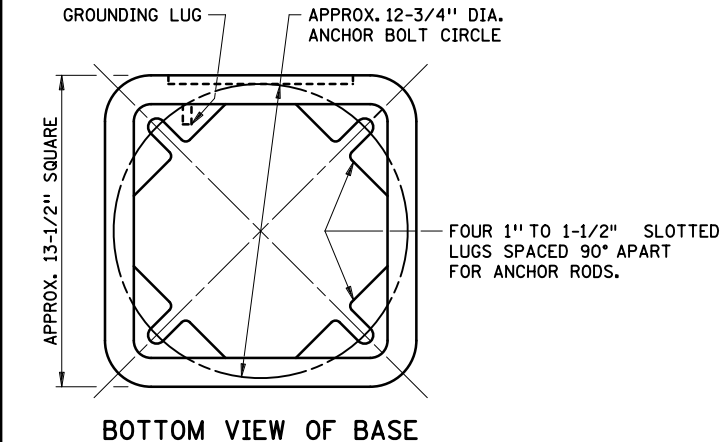


TRAFFIC SIGNAL CABINET
VEHICLE AND PEDESTRIAN SIGNAL
SUPPORT



SIDE VIEW OF BASE

NOTES:

THE GROUNDING LUG IN THE PEDESTAL BASE AND THE GROUND CONNECTION ON THE GROUND ROD SHALL BE COATED WITH AN ANTI-OXIDATION COMPOUND.

ANTI-SEIZE COMPOUND THAT MEETS MIL-PRF-907E SPEC. SHALL BE APPLIED WITH A BRUSH TO ALL THREADS.

SHALL USE SHIMS AND WASHERS SHOWN IN STANDARD PLATE 8129.

PEDESTAL AND PEDESTAL BASE SHALL BE PROPERLY BONDED AND GROUNDED TO ENTERING CONDUIT OR EQUIPMENT GROUND.

BASE SHALL MEET OR EXCEED CURRENT AASHTO BREAKAWAY REQUIREMENTS.

SHALL BE SPUN FINISHED AND HAVE ANODIC COATING AS PER SPEC MIL-A-8625C FOR TYPE II, CLASS I COATING.

- ① STEEL PEDESTAL SHAFT SHALL BE A WELDED STEEL TUBING AND A THREADED SCHEDULE 40 STANDARD NOMINAL TRADE SIZE STEEL PIPE NIPPLE. THE STEEL TUBING WALL THICKNESS SHALL BE A MINIMUM 0.125 INCH TO A MAXIMUM 0.156 INCH. THE STEEL TUBING SHALL WEIGH 5.6 LBS./FT TO A MAXIMUM OF 7.2 LBS./FT. THE THREADED STEEL NIPPLE SHALL BE 5 INCHES LONG WEIGHING 10.7 LBS./FT. THE NIPPLE SHALL BE ELECTRIC WELDED TO AN END OF THE STEEL TUBING, AND THE WELDING SHALL MEET AMERICAN WELDING SOCIETY STANDARDS.
- ② ALUMINUM PEDESTAL SHAFT (REPLACES 5" NIPPLE AND STEEL TUBING) SHALL BE 0.34 INCHES THICK AND WEIGH 5.2 LBS./FT. THREADS ARE PER ANSIB2.1.

PLANS SYMBOL
TRAFFIC SIGNAL PEDESTAL

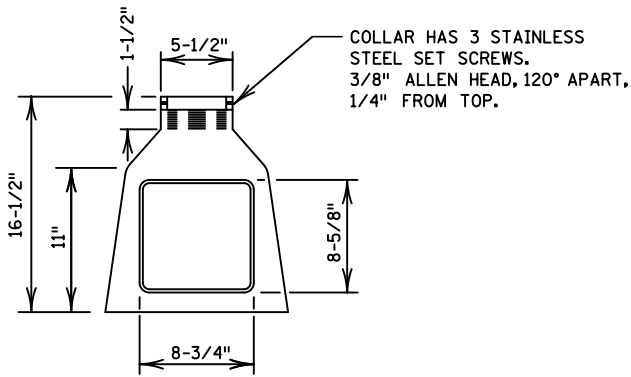
APPROVED DECEMBER 20, 2011

STATE DESIGN ENGINEER

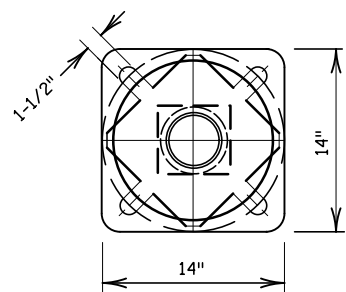
STATE OF MINNESOTA
DEPARTMENT OF TRANSPORTATION
PEDESTAL AND PEDESTAL BASE
(FOR TRAFFIC CONTROL SIGNALS SUPPORT)

SPECIFICATION
REFERENCE
2565

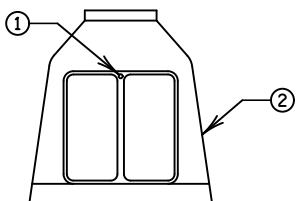
STANDARD
PLATE
NO.
8122F
1 OF 2



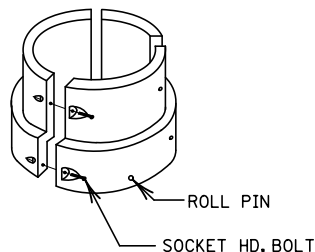
FRONT VIEW OF BASE WITH INTEGRATED WIND COLLAR



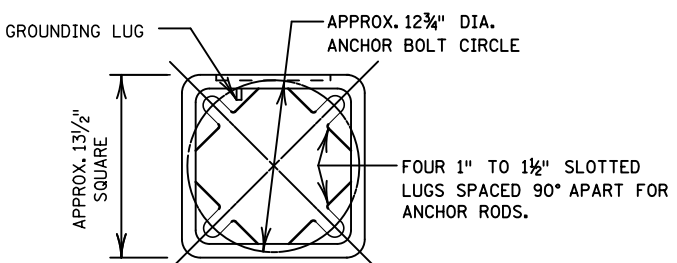
BOTTOM VIEW OF BASE WITH INTEGRATED WIND COLLAR



FRONT VIEW OF BASE WITHOUT INTEGRATED WIND COLLAR



WIND COLLAR (FOR BASE WITHOUT INTEGRATED WIND COLLAR)



BOTTOM VIEW OF BASE WITHOUT INTEGRATED WIND COLLAR

NOTES:

- THE GROUNDING LUG IN THE PEDESTAL BASE AND THE GROUND CONNECTION ON THE GROUND ROD SHALL BE COATED WITH AN ANTI-OXIDATION COMPOUND.
- ANTI-SEIZE COMPOUND THAT MEETS MIL-PRF-907E SPEC. SHALL BE APPLIED WITH A BRUSH TO ALL THREADS.
- SHALL USE SHIMS AND WASHERS SHOWN IN STANDARD PLATE 8129.
- PEDESTAL AND PEDESTAL BASE SHALL BE PROPERLY BONDED AND GROUNDED TO ENTERING CONDUIT OR EQUIPMENT GROUND. BASE SHALL MEET OR EXCEED CURRENT AASHTO BREAKAWAY REQUIREMENTS.
- SHALL BE SPUN FINISHED AND HAVE ANODIC COATING AS PER SPEC. MIL-A-8625C FOR TYPE II, CLASS I COATING.
- ① STAINLESS STEEL HEX-HEAD THREADED BOLT (NOMINAL 1/4" X 1-1/2") THAT SCREWS THROUGH THE ACCESS DOOR INTO A PRE-THREADED APERTURE AND IS PART OF THE PEDESTAL BASE. THE ACCESS DOOR SHALL HAVE (A) FIXED CATCHES) ON THE BOTTOM OF THE ACCESS DOOR.
- ② THREADED SQUARE PEDESTAL BASE FABRICATED FROM CAST ALUMINUM (CONFORMING TO THE REQUIREMENTS OF THE ALUMINUM ASSOCIATIONS FOR ALLOY NO. 319.0) SHALL BE SPUN FINISHED. SHALL HAVE AN ANODIC COATING AS PER MIL-A-8625C FOR TYPE II, CLASS 1 COATING.

<p>PLANS SYMBOL TRAFFIC SIGNAL PEDESTAL</p>
--

APPROVED DECEMBER 20, 2011

 STATE DESIGN ENGINEER

STATE OF MINNESOTA
 DEPARTMENT OF TRANSPORTATION
PEDESTAL AND PEDESTAL BASE
 (FOR TRAFFIC CONTROL SIGNALS SUPPORT)

SPECIFICATION REFERENCE
 2565

STANDARD PLATE NO.
8122F
 2 OF 2