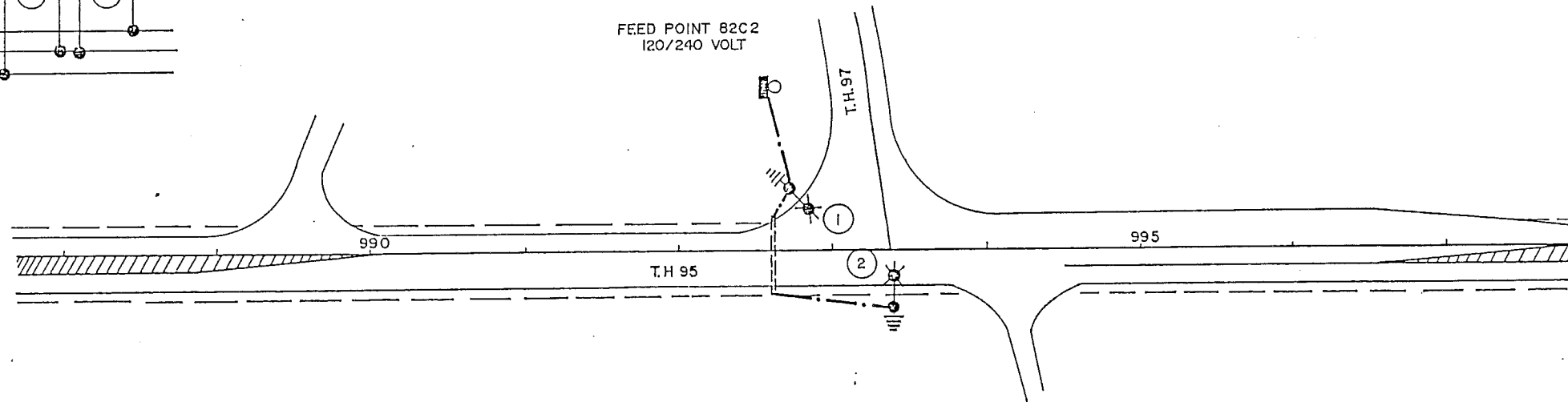
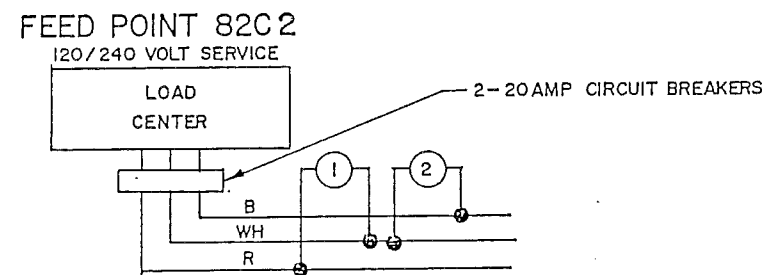
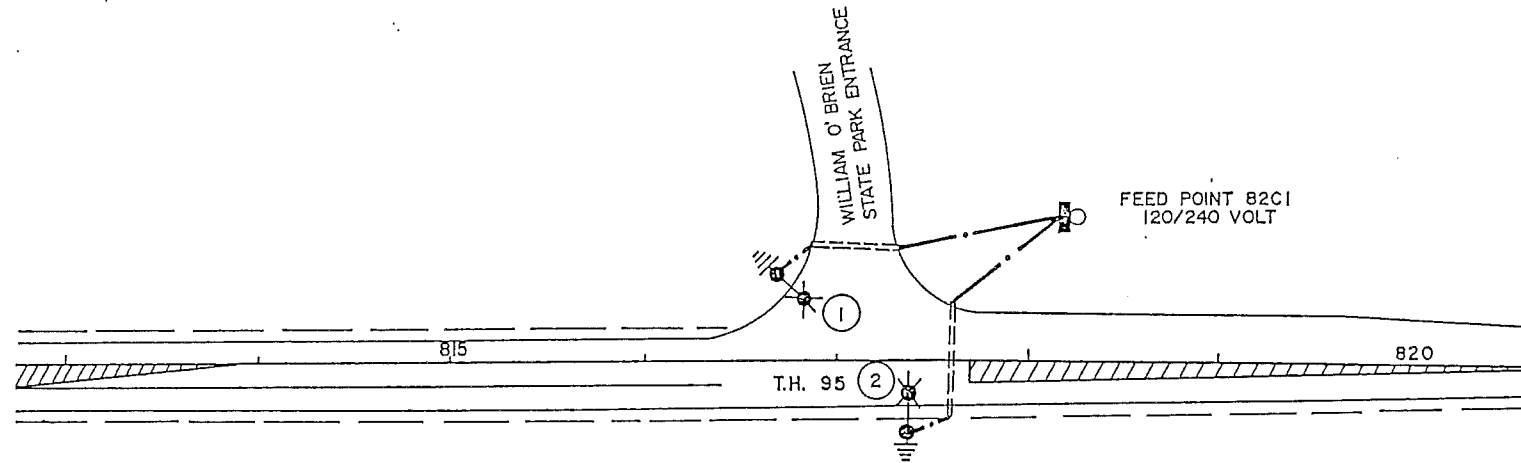
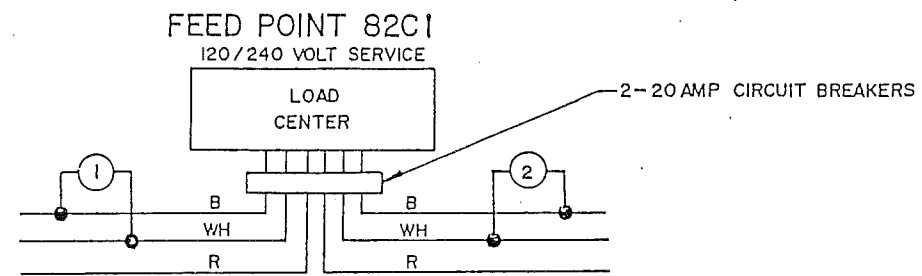




0 50'
SCALE



NOTE:

LIGHT POLES SHALL BE LOCATED APPROXIMATELY 9' FROM EDGE OF SHOULDER.
EXACT POLE LOCATIONS SHALL BE DETERMINED BY THE ENGINEER IN THE FIELD.

STREET LIGHTING

T.H. 95 AT WILLIAM O'BRIEN STATE PARK
T.H. 95 AT T.H. 97