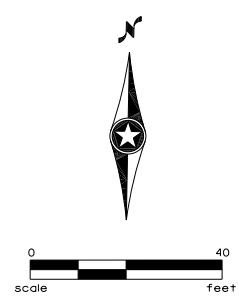


PLOTTED/REVISED: 11/21/2016

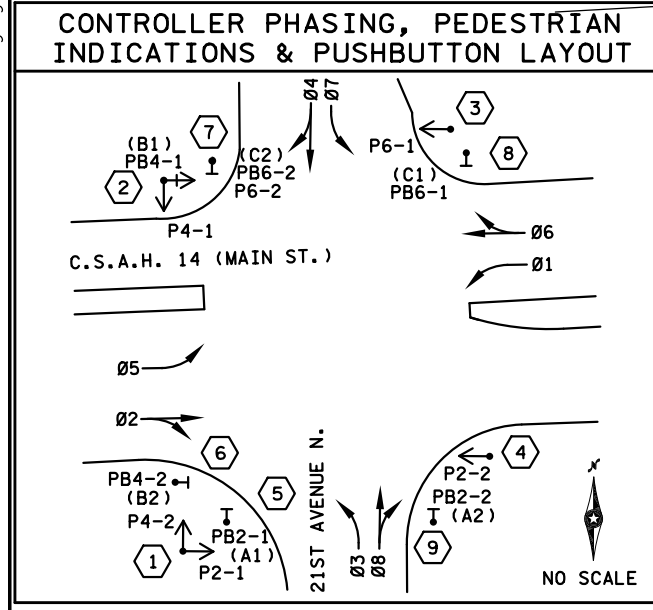
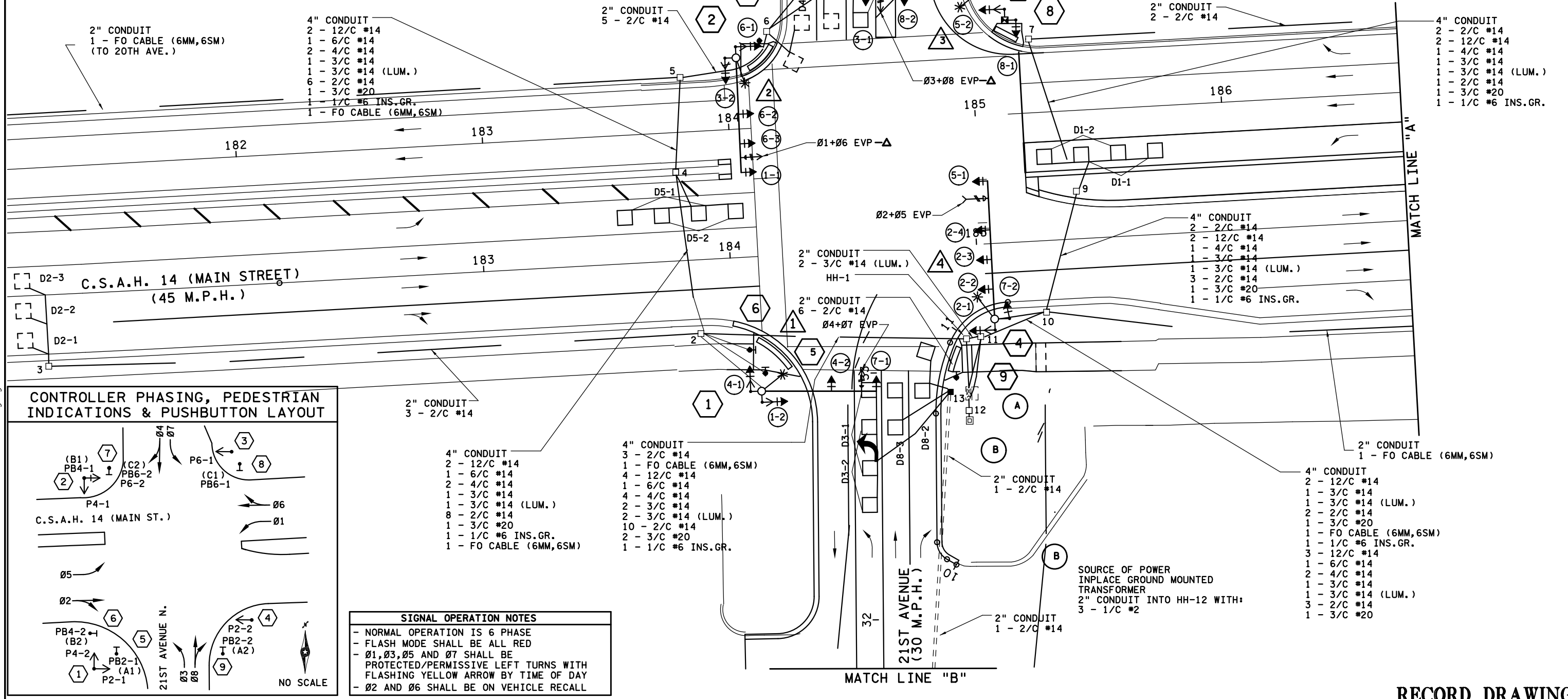
LED SIGNAL INDICATIONS							
FACE	R	Y	G	RLA	YLA	FYA	GLA
1-1,1-2				←	←	←	←
2-1,2-2,2-3,2-4	●	●	●				
3-1,3-2				←	←	←	←
4-1,4-2	●	●	●				
5-1,5-2				←	←	←	←
6-1,6-2,6-3	●	●	●				
7-1,7-2				←	←	←	←
8-1,8-2	●	●	●				

-ALL VEHICLE SIGNAL INDICATIONS SHALL BE 12"
-EACH SIGNAL FACE SHALL BE BLACK POLYCARBONITE WITH BACKGROUND SHIELD



PVC LOOP DETECTORS		
DESIGNATION	NO. & SIZE/FT.	LOCATION
D1-1,D5-1	2-6' X6'	20', 50'
D2-1,D2-2,D2-3	1-6' X6'	300'
D4-1	2-6' X6'	-6', 9'
D4-2	2-6' X6'	0', 15'
D3-1,D7-1	2-6' X6'	5', 35'
D3-2,D7-2	2-6' X6'	20', 50'
D1-2,D5-2	2-6' X6'	5', 35'
D6-1,D6-2	1-6' X6'	300'
D8-1	1-6' X6'	145'
D8-2	2-6' X6'	-6', 9'
D8-3	2-6' X6'	0', 15'

-LOCATION: DISTANCE FROM CROSSWALK/STOP LINE IN FEET



SIGNAL OPERATION NOTES

- NORMAL OPERATION IS 6 PHASE
- FLASH MODE SHALL BE ALL RED
- Ø1, Ø3, Ø5 AND Ø7 SHALL BE PROTECTED/PERMISSIVE LEFT TURNS WITH FLASHING YELLOW ARROW BY TIME OF DAY
- Ø2 AND Ø6 SHALL BE ON VEHICLE RECALL

RECORD DRAWING

BY	DATE	REVISIONS
SJK	11-21-16	RECORD PLAN

SYSTEM ID: 38824 T.E.
METER ADDRESS: 2108 MAIN STREET
MASTER ID: T.E.

INTERSECTION LAYOUT
C.S.A.H. 14 AT 21ST AVENUE N.
IN LINO LAKES, ANOKA COUNTY

S.A.P. NO.	DRAWN BY:	CKD BY:	DATE:
CERTIFIED BY _____	LIC. NO. _____		DATE: _____
STATE PROJ. NO.	(T.H.)	SHEET NO.	1 OF 3 SHEETS

DISTRICT #: METRO
PLOT NAME: T38824.sgl
PATH & FILENAME: IP_PWP-d1433446V38824.sgl.dgn

PLOTTED/REVISED: 11/21/2016

- 1 PA100 POLE FOUNDATION
TYPE PA100-A-45-D40-9 (DAVIT AT 350°)
1 - STRAIGHT MOUNT SIGNAL OVERHEAD AT 0' AND 18'
1 - ANGLE MOUNT SIGNAL AT 90°
1 - ANGLE MOUNT SIGNAL AT 180°
1 - ANGLE MOUNT C.D. PED IND AT 90°
1 - ANGLE MOUNT C.D. PED IND AT 180°
ONE WAY EVP DETECTOR AND
CONFIRMATORY LIGHT (PHASES 4+7)
LUMINAIRE - 250 WATT H.P.S.
TYPE D SIGN - SEE MAST ARM SIGN DETAILS
1 - R10-X12 SIGN (ADJACENT TO HEAD 7-1)
EXTEND INTO HH-2:
3" CONDUIT
2 - 12/C #14
2 - 4/C #14
1 - 3/C #14
1 - 3/C #14 (LUM.)
1 - 3/C #20
1 - 1/C #6 INS.GR.

- 4 PA100 POLE FOUNDATION
TYPE PA100-A-55-D40-9 (DAVIT AT 350°)
3 - STRAIGHT MOUNT SIGNALS OVERHEAD AT 18', 30' AND 42'
1 - ANGLE MOUNT SIGNAL OVERHEAD AT 0°
2 - ANGLE MOUNT SIGNALS AT 90° AND 180°
1 - ANGLE MOUNT C.D. PED IND AT 180°
ONE WAY EVP DETECTOR AND
CONFIRMATORY LIGHT (PHASES 2+5)
LUMINAIRE - 250 WATT H.P.S.
TYPE D SIGN - SEE MAST ARM SIGN DETAILS
1 - R6-1L SIGN (36x12)
1 - R9-3a SIGN (18x18) FACING POLE 8
1 - R10-X12 SIGN (ADJACENT TO HEAD 5-1)
EXTEND INTO HH-10:
3" CONDUIT
2 - 12/C #14
1 - 3/C #14
1 - 3/C #14 (LUM.)
1 - 3/C #20
1 - 1/C #6 INS.GR.
1 - 12/C #14
1 - 4/C #14

- 9 PUSHBUTTON STATION FOUNDATION
1 - APS PEDESTRIAN PUSH BUTTON STATION
1 - APS PUSH BUTTON & SIGN (RT ARROW) PB2-2
EXTEND INTO HH-1:
2" CONDUIT
1 - 2/C #14

- 2 PA100 POLE FOUNDATION
TYPE PA100-A-45-D40-9 (DAVIT AT 350°)
1 - ANGLE MOUNT SIGNAL OVERHEAD AT 0'
2 - STRAIGHT MOUNT SIGNALS OVERHEAD AT 12' AND 24'
2 - ANGLE MOUNT SIGNALS AT 90° AND 180°
1 - ANGLE MOUNT C.D. PED IND AT 90°
1 - ANGLE MOUNT C.D. PED IND AT 180°
ONE WAY EVP DETECTOR AND
CONFIRMATORY LIGHT (PHASES 1+6)
LUMINAIRE - 250 WATT H.P.S.
TYPE D SIGN - SEE MAST ARM SIGN DETAILS
1 - R6-1L SIGN (36x12)
1 - R10-X12 SIGN (ADJACENT TO HEAD 1-1)
EXTEND INTO HH-5:
3" CONDUIT
2 - 12/C #14
1 - 6/C #14
2 - 4/C #14
1 - 3/C #14
1 - 3/C #14 (LUM.)
1 - 2/C #14
1 - 3/C #20
1 - 1/C #6 INS.GR.
1 - APS PUSH BUTTON & SIGN (RT ARROW) PB4-1

- 5 PUSHBUTTON STATION FOUNDATION
1 - APS PEDESTRIAN PUSH BUTTON STATION
1 - APS PUSH BUTTON & SIGN (LT ARROW) PB2-1
EXTEND INTO HH-2:
2" CONDUIT
1 - 2/C #14

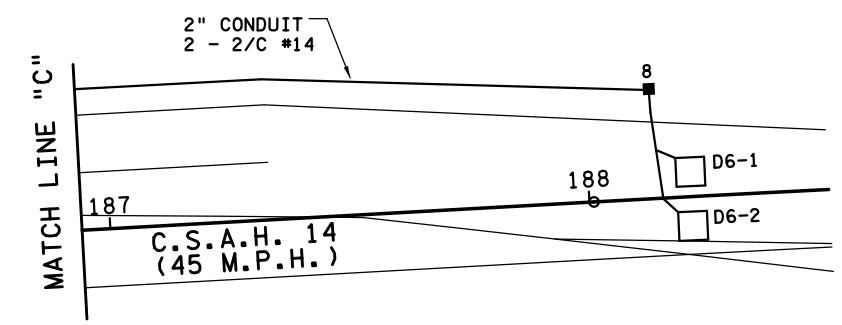
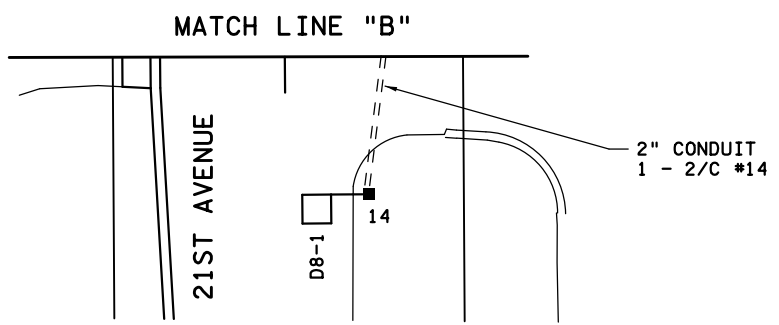
- 7 PUSHBUTTON STATION FOUNDATION
1 - APS PEDESTRIAN PUSH BUTTON STATION
1 - APS PUSH BUTTON & SIGN (RT ARROW) PB6-2
EXTEND INTO HH-6:
2" CONDUIT
1 - 2/C #14

- 3 PA100 POLE FOUNDATION
TYPE PA100-A-45-D40-9 (DAVIT AT 350°)
1 - STRAIGHT MOUNT SIGNAL OVERHEAD AT 0' AND 16'
ONE WAY EVP DETECTOR AND
CONFIRMATORY LIGHT (PHASES 3+8)
LUMINAIRE - 250 WATT H.P.S.
TYPE D SIGN - SEE MAST ARM SIGN DETAILS
1 - R10-X12 SIGN (ADJACENT TO HEAD 3-1)
EXTEND INTO HH-7:
3" CONDUIT
1 - 12/C #14
1 - 3/C #14
1 - 3/C #14 (LUM.)
1 - 3/C #20
1 - 1/C #6 INS.GR.

- 6 PUSHBUTTON STATION FOUNDATION
1 - APS PEDESTRIAN PUSH BUTTON STATION
1 - APS PUSH BUTTON & SIGN (RT ARROW) PB4-2
EXTEND INTO HH-2:
2" CONDUIT
1 - 2/C #14

- 8 PEDESTAL POLE FOUNDATION
13' PEDESTAL POLE AND BASE
2 - ANGLE MOUNT SIGNALS AT 90° AND 180°
1 - ANGLE MOUNT C.D. PED IND AT 90°
1 - R9-3a SIGN (18x18) FACING POLE 2
1 - APS PEDESTRIAN PUSH BUTTON STATION
1 - APS PUSH BUTTON & SIGN (LT ARROW) PB6-1
EXTEND INTO HH-7:
3" CONDUIT
1 - 12/C #14
1 - 4/C #14
1 - 2/C #14
1 - 1/C #6 INS.GR.

- A EQUIPMENT PAD
CONTROLLER & CABINET
SERVICE CABINET
1 - FIBER-OPTIC TELEMETRY
INTERFACE PANEL WITH HARNESS
2 - FIBER-OPTIC MODEMS
EXTEND 4" CONDUIT INTO HH-1 WITH:
3 - 2/C #14
1 - FO CABLE (6MM,6SM)
4 - 12/C #14
1 - 6/C #14
4 - 4/C #14
2 - 3/C #14
2 - 3/C #20
16 - 2/C #14
1 - 1/C #6 INS.GR.
EXTEND 4" CONDUIT INTO HH-11 WITH:
2 - 12/C #14
1 - 3/C #14
2 - 2/C #14
1 - 3/C #20
1 - FO CABLE (6MM,6SM)
1 - 1/C #6 INS.GR.
3 - 12/C #14
2 - 4/C #14
1 - 3/C #14
3 - 2/C #14
1 - 3/C #20
3/4" CONDUIT STUBBED OUT
(THREADED & CAPPED BOTH ENDS)
CONTROLLER TO SERVICE CABINET
EXTEND 2" CONDUIT WITH:
2 - 1/C #6 AND 1 - 1/C #6 INS.GR.
SERVICE CABINET TO HH-11
EXTEND 2" CONDUIT WITH:
1 - 3/C #14 (LUM.)
3 - 3/C #14 (LUM.)
SERVICE CABINET TO HH-12
EXTEND 2" CONDUIT WITH:
3 - 1/C #2
3" CONDUIT STUBBED OUT



RECORD DRAWING

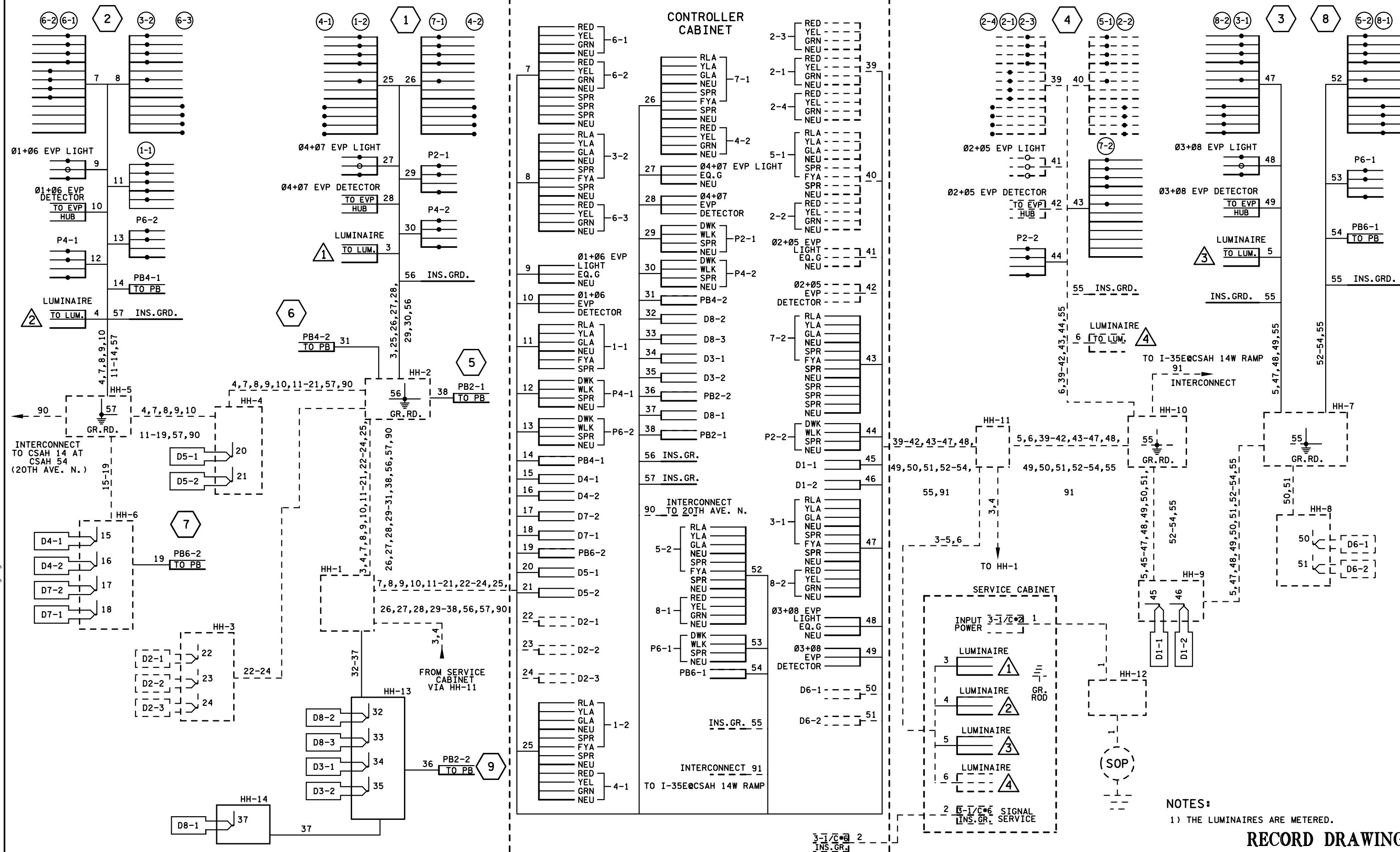
BY	DATE	REVISIONS	SYSTEM ID: 38824	T.E.	S.A.P. NO.	DRAWN BY:	CKD BY:	DATE:
SJK	11-21-16	RECORD PLAN	METER ADDRESS: 2108 MAIN STREET		CERTIFIED BY _____	LIC. NO. _____	DATE: _____	
			MASTER ID:	T.E.	STATE PROJ. NO.	(T.H.)	SHEET NO. 2 OF 3 SHEETS	

MATCH LINES AND POLE NOTES
C.S.A.H. 14 AT 21ST AVENUE N.
IN LINO LAKES, ANOKA COUNTY

DISTRICT #: METRO
PLOT NAME: T38824_sgl2
PATH & FILENAME: IP_PWP-d1433446V38824_sgl.dgn

PLOTTED/REVISED: 11/21/2016

DISTRICT #: METRO
IPLOT NAME: T38824_sgl
PATH & FILENAME: IP_PWP-d1433446VT38824_sgl.dgn



NOTES:
1) THE LUMINAIRES ARE METERED.

RECORD DRAWING

BY	DATE	REVISIONS
SJK	11-21-16	RECORD PLAN

SYSTEM ID: 38824 T.E.
METER ADDRESS: 2108 MAIN STREET
MASTER ID: T.E.

WIRING DIAGRAM
C.S.A.H. 14 AT 21ST AVENUE N.
IN LINO LAKES, ANOKA COUNTY

S.A.P. NO.	DRAWN BY:	CKD BY:	DATE:
CERTIFIED BY _____	LIC. NO. _____		DATE: _____
STATE PROJ. NO.	(T.H.)	SHEET NO. 3 OF 3 SHEETS	

LED SIGNAL INDICATIONS

FACE	R	Y	G	RLA	YLA	FYA	GLA
1-1,1-2				←	←	←	←
2-1,2-2,2-3,2-4	●	●	●				
3-1,3-2				←	←	←	←
4-1,4-2	●	●	●				
5-1,5-2				←	←	←	←
6-1,6-2,6-3	●	●	●				
7-1,7-2				←	←	←	←
8-1,8-2	●	●	●				

-CONTRACTOR SHALL INSTALL COUNTY FURNISHED VEHICLE HEADS AND INDICATIONS, SALVAGED SYSTEM "B" VEHICLE HEADS AND INDICATIONS, AND CONTRACTOR FURNISHED VEHICLE INDICATIONS, AS DESCRIBED IN THE SPECIAL PROVISIONS
 -ALL VEHICLE SIGNAL INDICATIONS ARE 12"
 -EACH SIGNAL FACE SHALL BE BLACK POLYCARBONITE WITH BACKGROUND SHIELD

2" PVC
 1-FO CABLE
 6MM,6SM

2" PVC
 1-FO CABLE
 6MM,6SM

INPLACE 4" PVC
 2 - 12/C #14
 1 - 6/C #14
 2 - 4/C #14
 1 - 3/C #14
 1 - 3/C #14 (LUM.)
 6 - 2/C #14
 1 - 3/C #20
 1 - 1/C #6 INS.GR.

1-FO CABLE
 6MM,6SM

PVC

INPLACE 2" CONDUIT
 5 - 2/C #14

PVC

INPLACE 2" CONDUIT
 2 - 2/C #14

4" PVC

2 - 2/C #14
 2 - 12/C #14
 1 - 4/C #14
 1 - 3/C #14
 1 - 3/C #14 (LUM.)
 1 - 2/C #14
 1 - 3/C #20
 1 - 1/C #6 INS.GR.

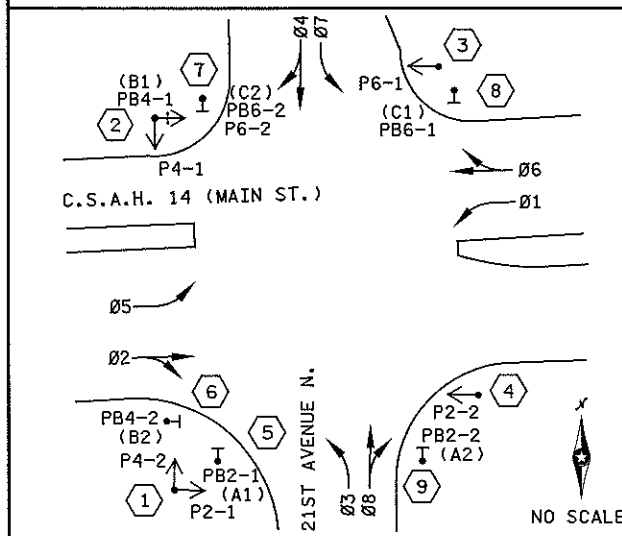
PVC

4" CONDUIT
 2 - 2/C #14
 2 - 12/C #14
 1 - 4/C #14
 1 - 3/C #14
 1 - 3/C #14 (LUM.)
 3 - 2/C #14
 1 - 3/C #20
 1 - 1/C #6 INS.GR.

INPLACE 2" PVC
 1 - FO CABLE (6MM,6SM)

4" CONDUIT
 2 - 12/C #14
 1 - 3/C #14
 1 - 3/C #14 (LUM.)
 2 - 2/C #14
 1 - 3/C #20
 1 - FO CABLE (6MM,6SM)
 1 - 1/C #6 INS.GR.
 3 - 12/C #14
 1 - 6/C #14
 2 - 4/C #14
 1 - 3/C #14
 1 - 3/C #14 (LUM.)
 3 - 2/C #14
 1 - 3/C #20

CONTROLLER PHASING, PEDESTRIAN INDICATIONS & PUSHBUTTON LAYOUT



PVC

INPLACE 2" CONDUIT
 3 - 2/C #14
 1 - FO CABLE (6MM,6SM)

4" PVC
 2 - 12/C #14
 1 - 6/C #14
 2 - 4/C #14
 1 - 3/C #14
 1 - 3/C #14 (LUM.)
 8 - 2/C #14
 1 - 3/C #20
 1 - 1/C #6 INS.GR.

1-FO CABLE
 6MM,6SM

PVC

INPLACE 4" CONDUIT
 3 - 2/C #14
 1 - FO CABLE (6MM,6SM)
 2 - 12/C #14
 1 - 6/C #14
 2 - 4/C #14
 1 - 3/C #14
 1 - 3/C #14 (LUM.)
 8 - 2/C #14
 1 - 3/C #20
 1 - 1/C #6 INS.GR.

4" CONDUIT
 2 - 12/C #14
 2 - 4/C #14
 1 - 3/C #14
 1 - 3/C #14 (LUM.)
 2 - 2/C #14
 1 - 3/C #20
 1 - 1/C #6 INS.GR.

1-FO CABLE
 6MM,6SM

SIGNAL OPERATION NOTES

- NORMAL OPERATION IS 6 PHASE
- FLASH MODE SHALL BE ALL RED
- Ø1, Ø3, Ø5 AND Ø7 SHALL BE PROTECTED/PERMISSIVE LEFT TURNS WITH FLASHING YELLOW ARROW BY TIME OF DAY
- Ø2 AND Ø6 SHALL BE ON VEHICLE RECALL

AS-BUILT REDLINES PROVIDED BY PETE ELLWANGER AND ED ANDRAJACK MN/DOT 8-19-13

PVC LOOP DETECTORS

DESIGNATION	NO. & SIZE/FT.	LOCATION
D1-1,D5-1	2-6'X6'	20',50'
D2-1,D2-2,D2-3	1-6'X6'	300'
D4-1	2-6'X6'	-6',9'
D4-2	2-6'X6'	0',15'
D3-1,D7-1	2-6'X6'	5',35'
D3-2,D7-2	2-6'X6'	20',50'
D1-2,D5-2	2-6'X6'	5',35'
D6-1,D6-2	1-6'X6'	300'
D8-1	1-6'X6'	145'
D8-2	2-6'X6'	-6',9'
D8-3	2-6'X6'	0',15'

-LOCATION: DISTANCE FROM CROSSWALK/STOP LINE IN FEET

MATCH LINE "B" SEE SHEET 32

SEE SHEET 2 FOR POLE NOTES AND CONSTRUCTION NOTES

STATE SYSTEM ID #38824
 METER ADDRESS:
 2108 MAIN STREET
 T.E. #5832

9:31:35 AM 5/8/2013 H:\Projects\7841\NH-MJN\Plan\7841_r01.dgn

NO	DATE	BY	CHKD	APPR	REVISION

I hereby certify that this plan, specification, or report was prepared by me or under my direct supervision and that I am a duly Licensed Professional Engineer under the laws of the State of Minnesota.
 Print Name: SCOTT C. POSKA
 Date: 5-8-13 License #: 47068

STATE AID PROJECT NO.
 STATE PROJECT NO.
 COUNTY PROJECT NO. 12-56-14
 CITY PROJECT NO.

DRAWN BY D. RASMUSSEN
 DESIGNED BY D. RASMUSSEN
 CHECKED BY S. POSKA
 COMM. NO. 0127841



ENGINEERS
 PLANNERS
 DESIGNERS

ANOKA COUNTY
 TRAFFIC SIGNAL PLANS
 21ST AVENUE
 C.S.A.H. 14 AT 21ST AVENUE N.
 REVISED INTERSECTION LAYOUT (SYSTEM "A")

SHEET 1 OF 3

1 PA100 POLE FOUNDATION
 INSTALL (SEE NOTE 13) TYPE PA100-A-45-D40-9 (DAVIT AT 350°)
 1 - STRAIGHT MOUNT SIGNAL OVERHEAD AT 0' AND 18'
 1 - ANGLE MOUNT SIGNAL AT 90°
 1 - ANGLE MOUNT SIGNAL AT 180°
 INSTALL (SEE NOTE 2) 1 - ANGLE MOUNT C.D. PED IND AT 90°
 1 - ANGLE MOUNT C.D. PED IND AT 180°
 ONE WAY EVP DETECTOR AND CONFIRMATORY LIGHT (PHASES 4+7)
 LUMINAIRE - 250 WATT H.P.S.
 TYPE D SIGN - SEE MAST ARM SIGN DETAILS
 1 - R10-X12 SIGN (ADJACENT TO HEAD 7-1)
 EXTEND INTO HH-15:
 3" CONDUIT
 2 - 12/C #14
 2 - 4/C #14
 1 - 3/C #14
 1 - 3/C #14 (LUM.)
 1 - 3/C #20
 1 - 1/C #6 INS.GR.

2 PA100 POLE FOUNDATION
 INSTALL (SEE NOTE 13) TYPE PA100-A-45-D40-9 (DAVIT AT 350°)
 1 - STRAIGHT MOUNT SIGNAL OVERHEAD AT 0' AND 18'
 2 - STRAIGHT MOUNT SIGNALS OVERHEAD AT 12' AND 24'
 2 - ANGLE MOUNT SIGNALS AT 90° AND 180°
 1 - ANGLE MOUNT C.D. PED IND AT 90°
 1 - ANGLE MOUNT C.D. PED IND AT 180°
 ONE WAY EVP DETECTOR AND CONFIRMATORY LIGHT (PHASES 1+6)
 LUMINAIRE - 250 WATT H.P.S.
 TYPE D SIGN - SEE MAST ARM SIGN DETAILS
 1 - R6-1L SIGN (36x12)
 1 - R10-X12 SIGN (ADJACENT TO HEAD 1-1)
 EXTEND INTO HH-5:
 3" CONDUIT
 2 - 12/C #14
 1 - 6/C #14
 2 - 4/C #14
 1 - 3/C #14
 1 - 3/C #14 (LUM.)
 1 - 2/C #14
 1 - 3/C #20
 1 - 1/C #6 INS.GR.
 1 - APS PUSH BUTTON & SIGN (RT ARROW) PB4-1

3 PA100 POLE FOUNDATION
 INSTALL (SEE NOTE 13) TYPE PA100-A-45-D40-9 (DAVIT AT 350°)
 1 - STRAIGHT MOUNT SIGNAL OVERHEAD AT 0' AND 16'
 ONE WAY EVP DETECTOR AND CONFIRMATORY LIGHT (PHASES 3+8)
 LUMINAIRE - 250 WATT H.P.S.
 TYPE D SIGN - SEE MAST ARM SIGN DETAILS
 1 - R10-X12 SIGN (ADJACENT TO HEAD 3-1)
 EXTEND INTO HH-7:
 3" CONDUIT
 1 - 12/C #14
 1 - 3/C #14
 1 - 3/C #14 (LUM.)
 1 - 3/C #20
 1 - 1/C #6 INS.GR.

A EQUIPMENT PAD
 CONTROLLER & CABINET SERVICE CABINET
 1 - FIBER-OPTIC TELEMETRY INTERFACE PANEL WITH HARNESS
 2 - FIBER-OPTIC MODEMS
 EXTEND 4" CONDUIT INTO HH-1 WITH:
 3 - 2/C #14
 1 - FO CABLE (6MM,6SM)
 2 - 12/C #14
 1 - 6/C #14
 2 - 4/C #14
 1 - 3/C #14
 1 - 3/C #20
 8 - 2/C #14
 1 - 1/C #6 INS.GR.
 EXTEND 4" CONDUIT INTO HH-11 WITH:
 2 - 12/C #14
 1 - 3/C #14
 1 - 3/C #14
 2 - 2/C #14
 1 - 3/C #20
 1 - FO CABLE (6MM,6SM)
 1 - 1/C #6 INS.GR.
 3 - 12/C #14
 2 - 4/C #14
 1 - 3/C #14
 3 - 2/C #14
 1 - 3/C #20
 3/4" CONDUIT STUBBED OUT (THREADED & CAPPED BOTH ENDS)
 CONTROLLER TO SERVICE CABINET
 EXTEND 2" CONDUIT WITH:
 2 - 1/C #6 AND 1 - 1/C #6 INS.GR.
 SERVICE CABINET TO HH-11
 EXTEND 2" CONDUIT WITH:
 1 - 3/C #14 (LUM.)
 3 - 3/C #14 (LUM.)
 SERVICE CABINET TO HH-12
 EXTEND 2" CONDUIT WITH:
 3 - 1/C #2
 CONNECT WITH INPLACE STUBBED OUT 3" CONDUIT
 3" CONDUIT TO HH-13 WITH:
 2 - 12/C #14
 2 - 4/C #14
 1 - 3/C #14
 1 - 3/C #20
 8 - 2/C #14

4 PA100 POLE FOUNDATION
 INPLACE TYPE PA100-A-55-D40-9 (DAVIT AT 350°)
 3 - STRAIGHT MOUNT SIGNALS OVERHEAD AT 18', 30' AND 42'
 1 - ANGLE MOUNT SIGNAL OVERHEAD AT 0'
 2 - ANGLE MOUNT SIGNALS AT 90° AND 180°
 1 - ANGLE MOUNT C.D. PED IND AT 180°
 ONE WAY EVP DETECTOR AND CONFIRMATORY LIGHT (PHASES 2+5)
 LUMINAIRE - 250 WATT H.P.S.
 TYPE D SIGN - SEE MAST ARM SIGN DETAILS
 1 - R6-1L SIGN (36x12)
 1 - R9-3a SIGN (18x18) FACING POLE 8
 1 - R10-X12 SIGN (ADJACENT TO HEAD 5-1)
 EXTEND INTO HH-10:
 3" CONDUIT
 2 - 12/C #14
 1 - 3/C #14
 1 - 3/C #14 (LUM.)
 1 - 3/C #20
 1 - 1/C #6 INS.GR.
 1 - 12/C #14
 1 - 4/C #14

5 PUSHBUTTON STATION FOUNDATION
 INSTALL (SEE NOTE 2) 1 - APS PEDESTRIAN PUSH BUTTON STATION
 1 - APS PUSH BUTTON & SIGN (LT ARROW) PB2-1
 EXTEND INTO HH-15:
 2" CONDUIT
 1 - 2/C #14

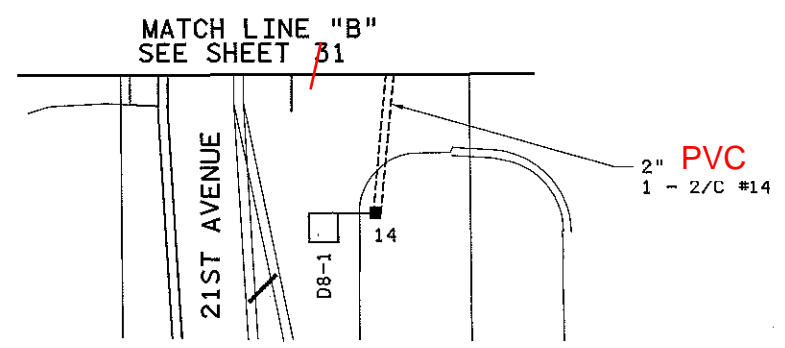
6 PUSHBUTTON STATION FOUNDATION
 1 - APS PEDESTRIAN PUSH BUTTON STATION
 1 - APS PUSH BUTTON & SIGN (RT ARROW) PB4-2
 EXTEND INTO HH-18:
 2" CONDUIT
 1 - 2/C #14

9 PUSHBUTTON STATION FOUNDATION
 INSTALL (SEE NOTE 2) 1 - APS PEDESTRIAN PUSH BUTTON STATION
 1 - APS PUSH BUTTON & SIGN (RT ARROW) PB2-2
 EXTEND INTO HH-1:
 2" CONDUIT
 1 - 2/C #14

7 PUSHBUTTON STATION FOUNDATION
 1 - APS PEDESTRIAN PUSH BUTTON STATION
 1 - APS PUSH BUTTON & SIGN (RT ARROW) PB6-2
 EXTEND INTO HH-6:
 2" CONDUIT
 1 - 2/C #14

8 PEDESTAL POLE FOUNDATION
 13' PEDESTAL POLE AND BASE
 2 - ANGLE MOUNT SIGNALS AT 90° AND 180°
 1 - ANGLE MOUNT C.D. PED IND AT 90°
 1 - R9-3a SIGN (18x18) FACING POLE 2
 1 - APS PEDESTRIAN PUSH BUTTON STATION
 1 - APS PUSH BUTTON & SIGN (LT ARROW) PB6-1
 EXTEND INTO HH-7:
 3" CONDUIT
 1 - 12/C #14
 1 - 4/C #14
 1 - 2/C #14
 1 - 1/C #6 INS.GR.

- NOTES:**
- 1) ALL ITEMS ARE FURNISH AND INSTALL UNLESS NOTED OTHERWISE.
 - 2) CONTRACTOR SHALL INSTALL PEDESTRIAN HEADS, PEDESTRIAN PUSH BUTTONS, PHASES 1+6 AND 8 EVP DETECTOR, AND PHASES 1+6 AND 8 EVP CONFIRMATORY LIGHT AS DESCRIBED IN THE SPECIAL PROVISIONS.
 - 3) THE EXACT LOCATION OF HANDHOLES, POLES, LOOP DETECTORS SHALL BE DETERMINED IN FIELD BY THE ENGINEER AND VERIFIED BY MNDOT TRAFFIC OFFICE PERSONNEL.
 - 4) A 3/4" HALF COUPLING, 3/4" PIPE NIPPLE AND CONDUIT OUTLET BODY FOR EMERGENCY VEHICLE PREEMPTION EQUIPMENT SHALL BE FURNISHED AND INSTALLED 6' FROM THE END OF EACH MAST ARM.
 - 5) MAST ARM SIGNING IS INCLUDED IN THE SIGNAL PAY ITEM. FOR TYPE "D" MAST ARM SIGNS, SEE DETAILS.
 - 6) FOR PAVEMENT MARKINGS, SEE SIGNING AND STRIPING PLANS.
 - 7) ITEMS DENOTED WITH AN **A** ARE INCLUDED IN THE EVP SYSTEM PAY ITEM.
 - 8) ALL SCHEDULE 80 PVC OR HDPE SHALL CARRY 1 - 1/C #6 INSULATED GREEN GROUNDING CONDUCTOR AS SHOWN ON THE PLAN.
 - 9) ADJUST AND RE-LOCATE INPLACE HH-1 TO AVOID CONFLICT WITH NEW PEDESTRIAN RAMP.
 - 10) THE CONTRACTOR SHALL INSTALL SIGNS AS DESCRIBED IN THE SPECIAL PROVISIONS.
 - 11) REFER TO "FOR INFORMATION ONLY" SHEETS FOR INPLACE SIGNAL COMPONENTS.
 - 12) THE CONTRACTOR SHALL PROTECT AND MAINTAIN INPLACE ITEMS.
 - 13) THE CONTRACTOR SHALL SALVAGE INPLACE LUMINAIRE EXTENSIONS AND LUMINAIRES, AND SHALL INSTALL POLE, MAST ARM, LUMINAIRE EXTENSIONS, AND LUMINAIRES, AS DESCRIBED IN THE SPECIAL PROVISIONS.
 - 14) THE CONTRACTOR SHALL INSTALL COUNTY FURNISHED VEHICLE HEADS AND INDICATIONS, SALVAGED SYSTEM "B" VEHICLE HEADS AND INDICATIONS, AND CONTRACTOR FURNISHED VEHICLE INDICATIONS, AS DESCRIBED IN THE SPECIAL PROVISIONS.
 - 15) THE CONTRACTOR SHALL SALVAGE INPLACE SIGNAL POLE AND MAST ARMS 2 AND 3 TO ANOKA COUNTY AS DESCRIBED IN THE SPECIAL PROVISIONS.



STATE SYSTEM ID #38824
 METER ADDRESS:
 2108 MAIN STREET
 T.E. #5832

9:33:21 AM 5/8/2013 H:\Projects\7841\HI-WUP\Plan\7841_I-03.dgn

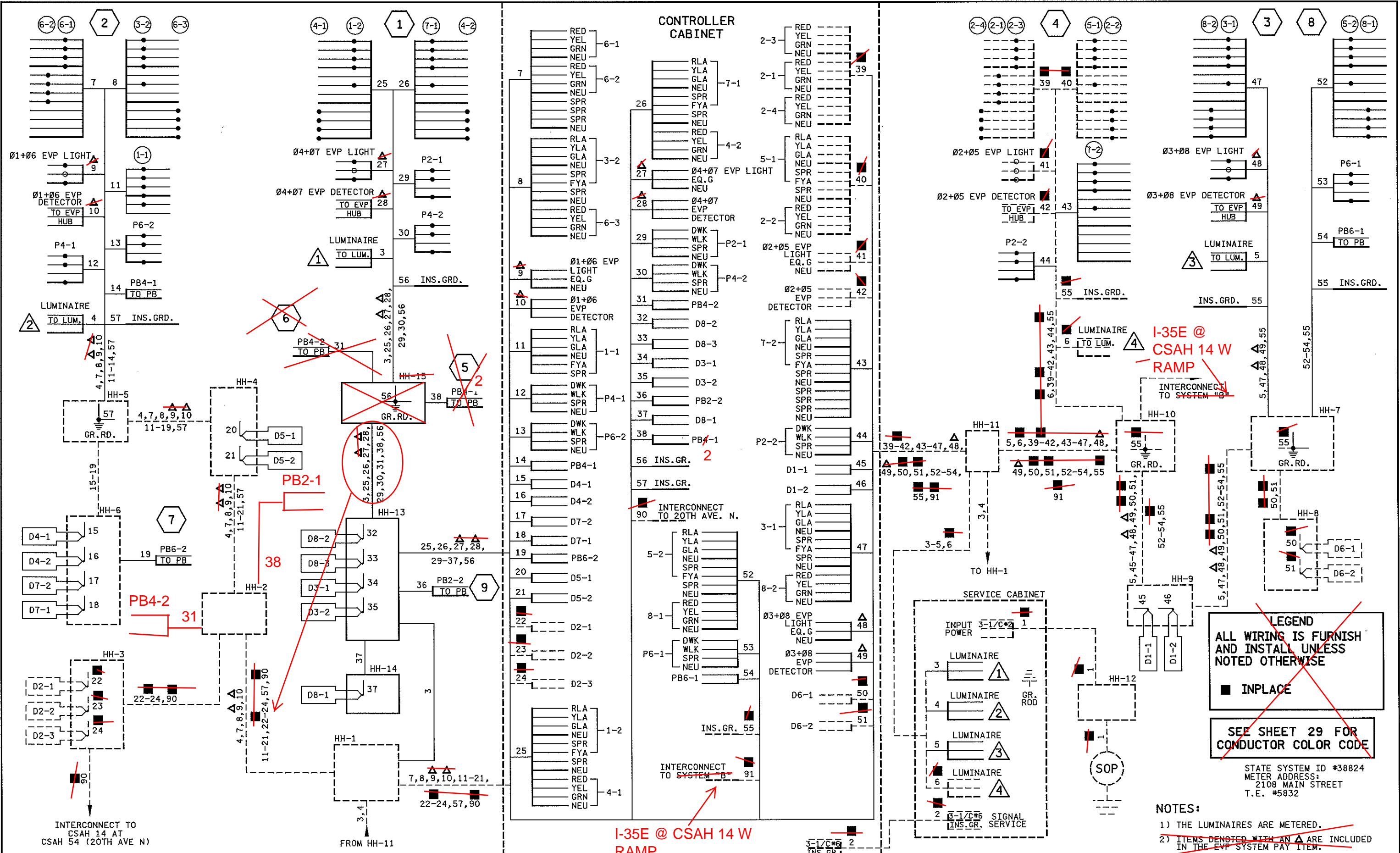
I hereby certify that this plan, specification, or report was prepared by me or under my direct supervision and that I am a duly Licensed Professional Engineer under the laws of the State of Minnesota.
 Print Name: SCOTT C. POSKA
 Date: 5-8-13 License #: 47068

STATE AID PROJECT NO.
 STATE PROJECT NO.
 COUNTY PROJECT NO. 12-56-14
 CITY PROJECT NO.

DRAWN BY D. RASMUSSEN
 DESIGNED BY D. RASMUSSEN
 CHECKED BY S. POSKA
 COMM. NO. 0127841
SRH ENGINEERS PLANNERS DESIGNERS
 Consulting Group, Inc.

ANOKA COUNTY
 TRAFFIC SIGNAL PLANS
 21ST AVENUE
 C.S.A.H. 14 AT 21ST AVENUE N.
 REVISED INTERSECTION LAYOUT (SYSTEM "A")

SHEET 2 OF 3



9/26/01 AM
 5/8/2013
 H:\P\01\ects\7841\HI-MUNP\an\7841_wd01.dgn

NO	DATE	BY	CKD	APPR	REVISION

I hereby certify that this plan, specification, or report was prepared by me or under my direct supervision and that I am a duly Licensed Professional Engineer under the laws of the State of Minnesota.
 Print Name: SCOTT C. POSKA
 Date: 5-8-13 License #: 47068

STATE AID PROJECT NO.
 STATE PROJECT NO.
 COUNTY PROJECT NO. 12-56-14
 CITY PROJECT NO.
 DRAWN BY D. RASMUSSEN
 DESIGNED BY D. RASMUSSEN
 CHECKED BY S. POSKA
 COMM. NO. 0127841



ANOKA COUNTY
 TRAFFIC SIGNAL PLANS
 21ST AVENUE
 C.S.A.H. 14 AT 21ST AVENUE N.
 REVISED FIELD WIRING DIAGRAM (SYSTEM "A")
SHEET 3 OF 3