

NUMBER	SIZE (FT)	LOCATION
D1-1	2-6x6	0 & 15
D1-1	2-6x6	30 & 45
D2-1, D6-1	2-6x6	230
D4-1, D4-2	2-6x6	0 & 20

-ALL LOOP DETECTORS ARE SAWCUT
-LOCATION: DISTANCE FROM CROSSWALK/STOP BAR IN FEET

⑤ PEDESTAL FOUNDATION
10' PEDESTAL POLE PLUS BASE
1-ONE WAY EVP DETECTOR
-POLE MOUNTED (PHASE 1+6)
EXTEND INTO HH 32:
2" PVC
1-3/C #20

Ⓐ EQUIPMENT PAD
CONTROLLER AND CABINET
2-3" RSC TO HH 1:
5-12/C #12
9-2/C #12

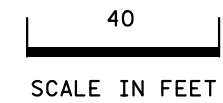
3" RSC TO HH 13:
3" RSC
2-12/C #12
1-2/C #12
2-1/C #3
1-25PR #19

Ⓑ SOP-WOOD POLE (XCEL ENERGY)
METER AND DISCONNECT
2" RSC RISER AND WEATHERHEAD
ABOVE METER
3-1/C #2
EXTEND INTO HH 15:
2" RSC
2-1/C #6
1-1/C #6 BR. GR.

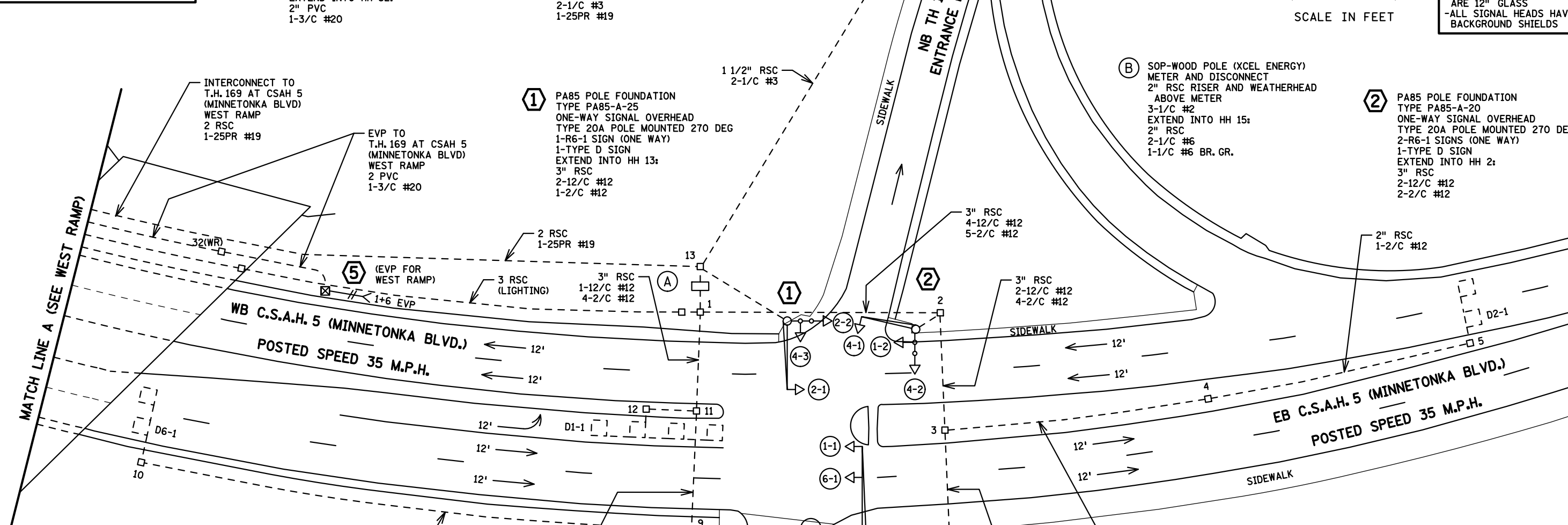
② PA85 POLE FOUNDATION
TYPE PA85-A-20
ONE-WAY SIGNAL OVERHEAD
TYPE 20A POLE MOUNTED 270 DEG
2-R6-1 SIGNS (ONE WAY)
1-TYPE D SIGN
EXTEND INTO HH 2:
3" RSC
2-12/C #12
2-2/C #12

SIGNAL FACE CHART			
FACE	R	Y	G
1-1, 1-2	←	←	←
2-1, 2-2	○	○	○
4-1, 4-2, 4-3, 4-4	○	○	○
6-1, 6-2	○	○	○

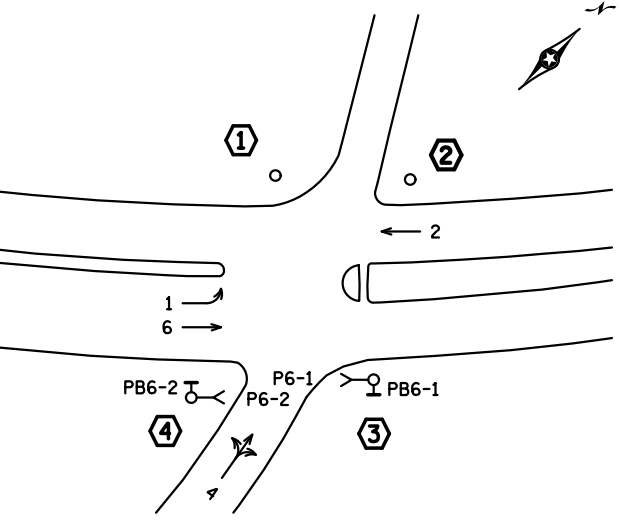
-ALL RED AND GREEN SIGNAL INDICATIONS ARE 12" LED
-ALL YELLOW SIGNAL INDICATIONS ARE 12" GLASS
-ALL SIGNAL HEADS HAVE BACKGROUND SHIELDS



PLOTTED/REVISED: 4/12/2013



CONTROLLER PHASING, PEDESTRIAN INDICATIONS AND PUSH BUTTONS



PEDESTRIAN PUSH BUTTONS SHALL BE LOCATED AS SHOWN ABOVE

④ PEDESTAL FOUNDATION
10' PEDESTAL POLE PLUS BASE
TYPE 4C
1-PED PB AND SIGN
EXTEND INTO HH 9:
3" RSC
1-12/C #12
1-2/C #12

③ PA90 POLE FOUNDATION
TYPE PA90-A-35
2-ONE-WAY SIGNALS OVERHEAD AT 0' AND 11'
TYPE 20B POLE MOUNTED 270 DEG
1-PED PB AND SIGN
1-TYPE D SIGN
EXTEND INTO HH 6:
3" RSC
2-12/C #12
2-2/C #12

SIGNAL SYSTEM OPERATION

- THE SIGNAL SYSTEM FLASH MODE IS ALL RED.
- NORMAL OPERATION IS 4 PHASE, WITH PHASE 1 BEING A PROTECTED LEFT TURN PHASE.
- PHASES 2 AND 6 SHALL BE ON VEHICLE RECALL.

BY	DATE	REVISIONS
GDS	04-12-13	AS BUILT OF TE NO. 5717 - REMOVED PHASE 2 AND 4 PED CROSSINGS

SYSTEM ID: 21503
METER ADDRESS:
MASTER ID:
T.E.
T.E.

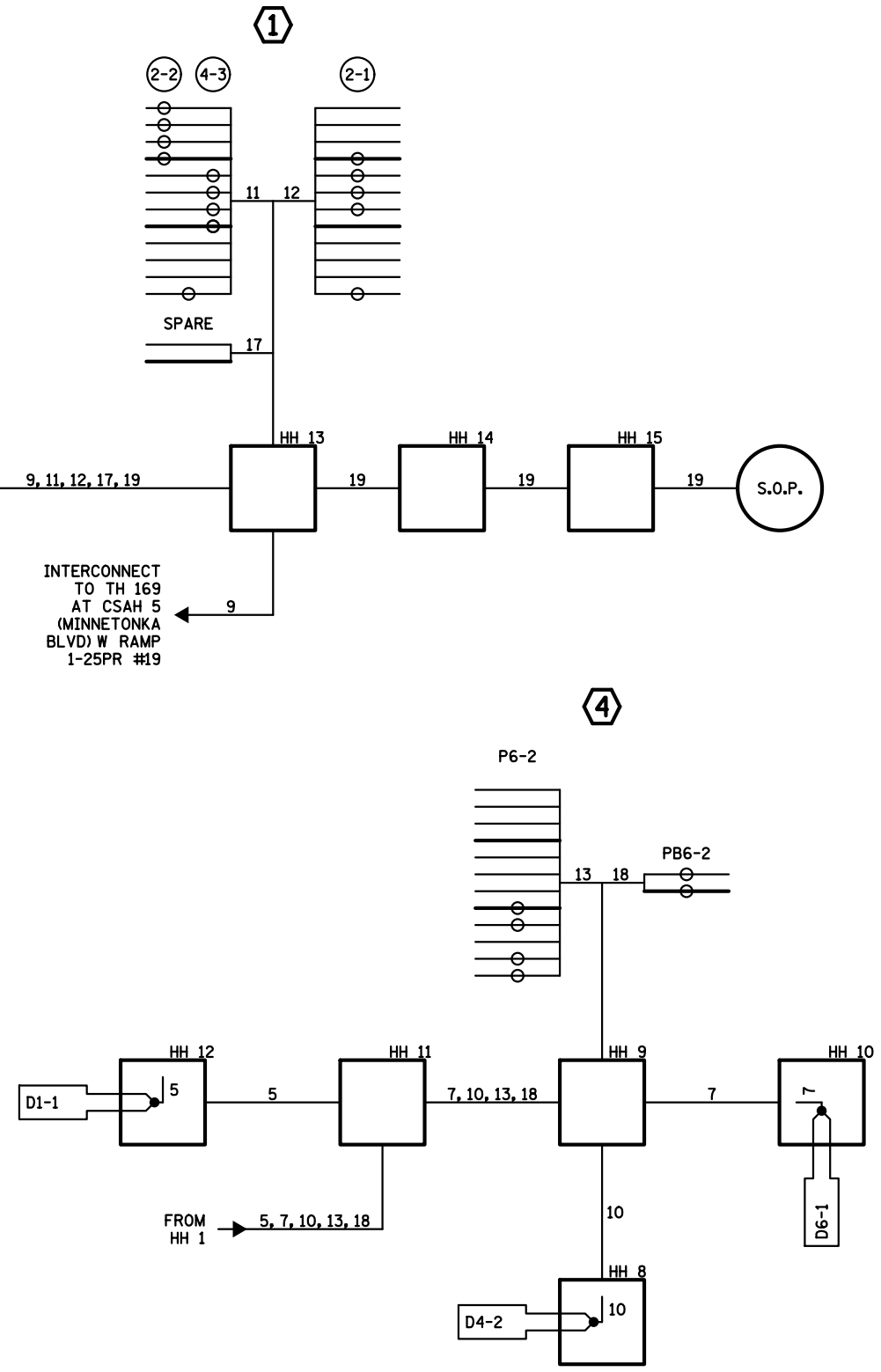
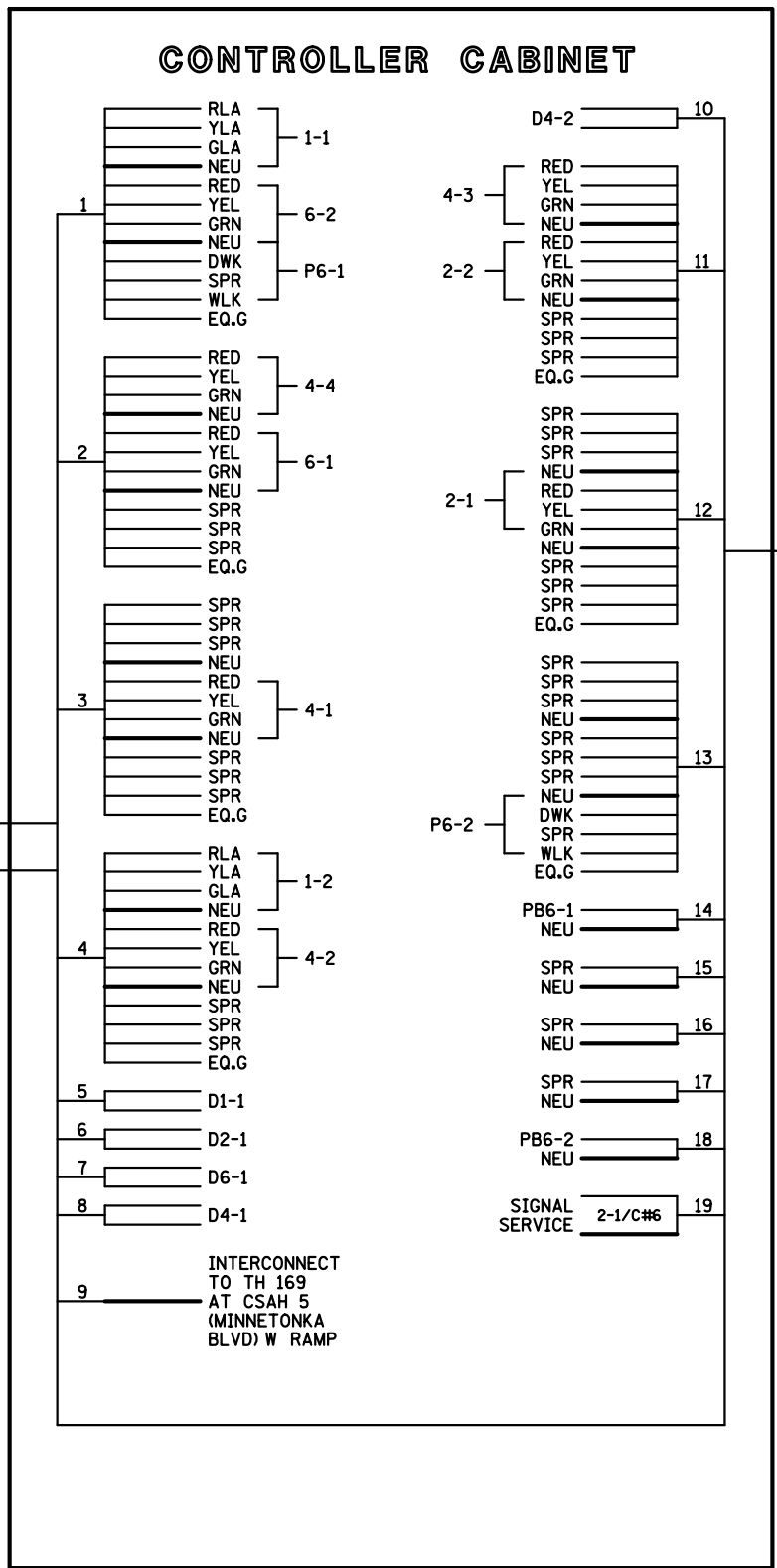
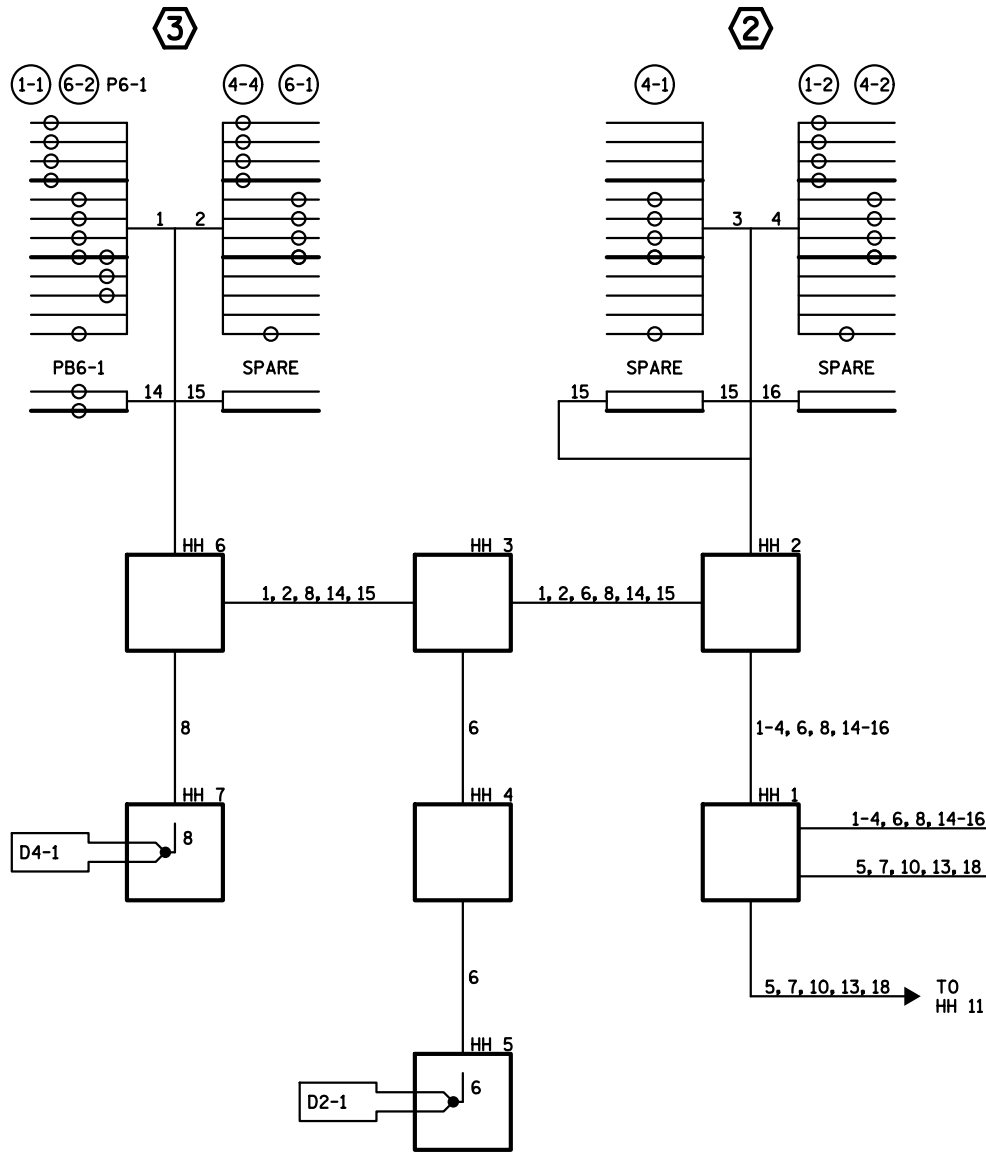
INTERSECTION LAYOUT
TRAFFIC CONTROL SIGNAL SYSTEM
TH 169 AT C.S.A.H. 5 (MINNETONKA BLVD.) E. RAMP
IN ST. LOUIS PARK, HENNEPIN COUNTY

S.A.P. NO. _____
DRAWN BY: _____ CKD BY: _____ DATE: _____
CERTIFIED BY _____ L.C. NO. _____ DATE: _____
STATE PROJ. NO. (T.H.169) SHEET NO. 1 OF 2 SHEETS

DISTRICT #: METRO
PLOT NAME: layout
PATH & FILENAME: IP_PWP-d0784327\21503_sgl.dgn

PLOTTED/REVISED: 4/12/2013

DISTRICT #: METRO
 IPLOT NAME: wiring
 PATH & FILENAME: IP_PWP-d0784327\21503_sgl.dgn



CONDUCTOR COLOR CODING	
R	BLK 2-1/C
O	WH
BL	R
WH	WH 3/C#12
R/BLK	BLK
O/BLK	R OR O 3/C#20
BL/BLK	WH OR YEL
WH/BLK	BLK OR BL
BLK	BLK 2/C#12
BLK/WH	WH
G/BLK	
G	

NOTE: ALL TERMINAL BLOCK CONNECTIONS ARE ARRANGED AS SPECIFIED ABOVE

BY	DATE	REVISIONS	SYSTEM ID: 21503	T.E.	FIELD WIRING DIAGRAM TRAFFIC CONTROL SIGNAL SYSTEM TH 169 AT C.S.A.H. 5 (MINNETONKA BLVD.) E. RAMP IN ST. LOUIS PARK, HENNEPIN COUNTY	S.A.P. NO.	DRAWN BY:	CKD BY:	DATE:	
GDS	04-12-13	AS BUILT OF TE NO. 5717 - REMOVED PHASE 2 AND 4	METER ADDRESS:			CERTIFIED BY _____	LIC. NO. _____	DATE: _____		
		PED CROSSINGS	MASTER ID:	T.E.		STATE PROJ. NO. (T.H. 169)	SHEET NO. 2 OF 2 SHEETS			