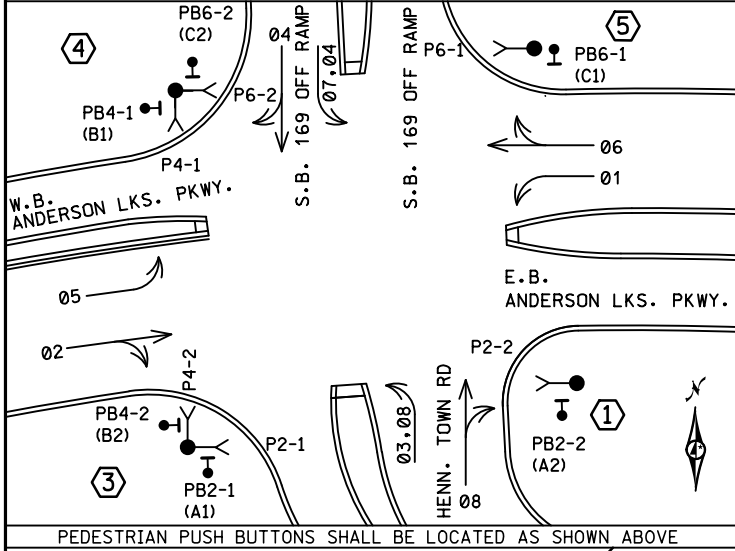


PLOTTED/REVISED: 18-MAY-2018

DISTRICT #: Metro
 IPLOT NAME: layout
 PATH & FILENAME: Projects\DM_ROMS\69\0000\Traffic\Signals\22109\T22109_sgl.dgn

CONTROLLER PHASING, PEDESTRIAN INDICATIONS & PUSH BUTTONS.

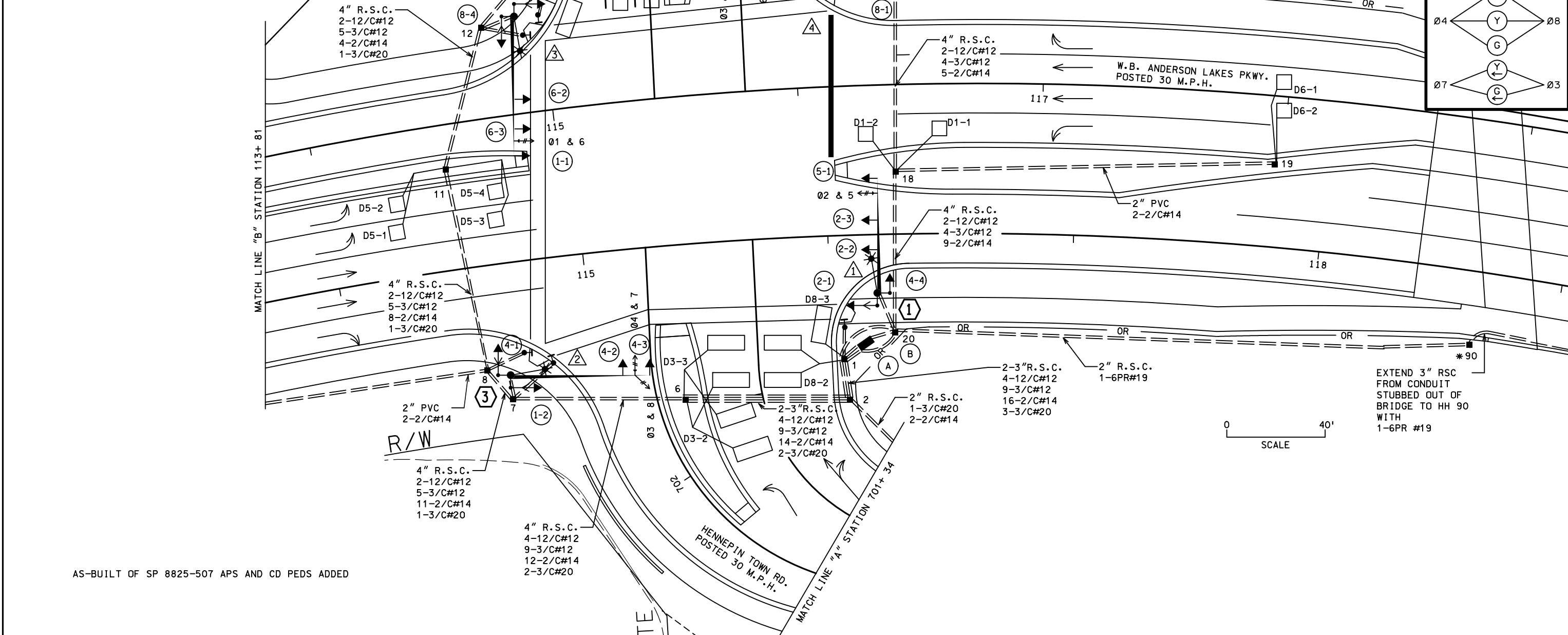
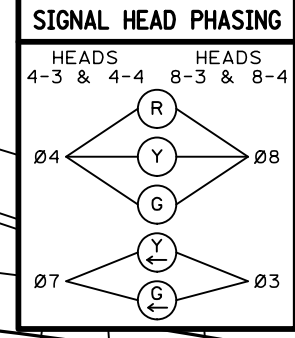


PEDESTRIAN PUSH BUTTONS SHALL BE LOCATED AS SHOWN ABOVE

SIGNAL HEAD CHART						LOOP DETECTOR CHART		
FACE	R	Y	G	Y	G	DESIGNATION	NO. OF LOOPS	LOCATION
1-1, 1-2	←	←	←			D1-1, D5-1, D5-2	1	40
2-1, 2-2, 2-3	○	○	○			D1-2, D5-3, D5-4	1	10
4-1, 4-2	○	○	○			D2-1, D2-2, D6-1, D6-2	1	180
4-3, 4-4	○	○	○	←	←	D3-1, D4-1, D7-1, D8-1	1	120
5-1, 5-2	←	←	←			D3-2	2-6X15	20 & 50
6-1, 6-2, 6-3	○	○	○			D3-3	2-6X15	5 & 35
8-1, 8-2	○	○	○			D4-2	2	5 & 20
8-3, 8-4	○	○	○	←	←	D4-3, D8-3	1-6X15	-5
						D7-2	2	20 & 50
						D7-3	2	5 & 35
						D8-2	2-6X15	5 & 20

-ALL SIGNAL INDICATIONS ARE 12"
 -ALL SIGNAL INDICATIONS ARE LED
 -ALL SIGNAL FACES HAVE A BACKGROUND SHIELD

-ALL LOOP DETECTORS SHALL BE 6' X 6' PVC UNLESS OTHERWISE SPECIFIED
 -LOCATION: DISTANCE FROM CROSSWALK/STOP LINE IN FEET



EXTEND 3" RSC FROM CONDUIT STUBBED OUT OF BRIDGE TO HH 90 WITH 1-6PR #19

AS-BUILT OF SP 8825-507 APS AND CD PEDS ADDED

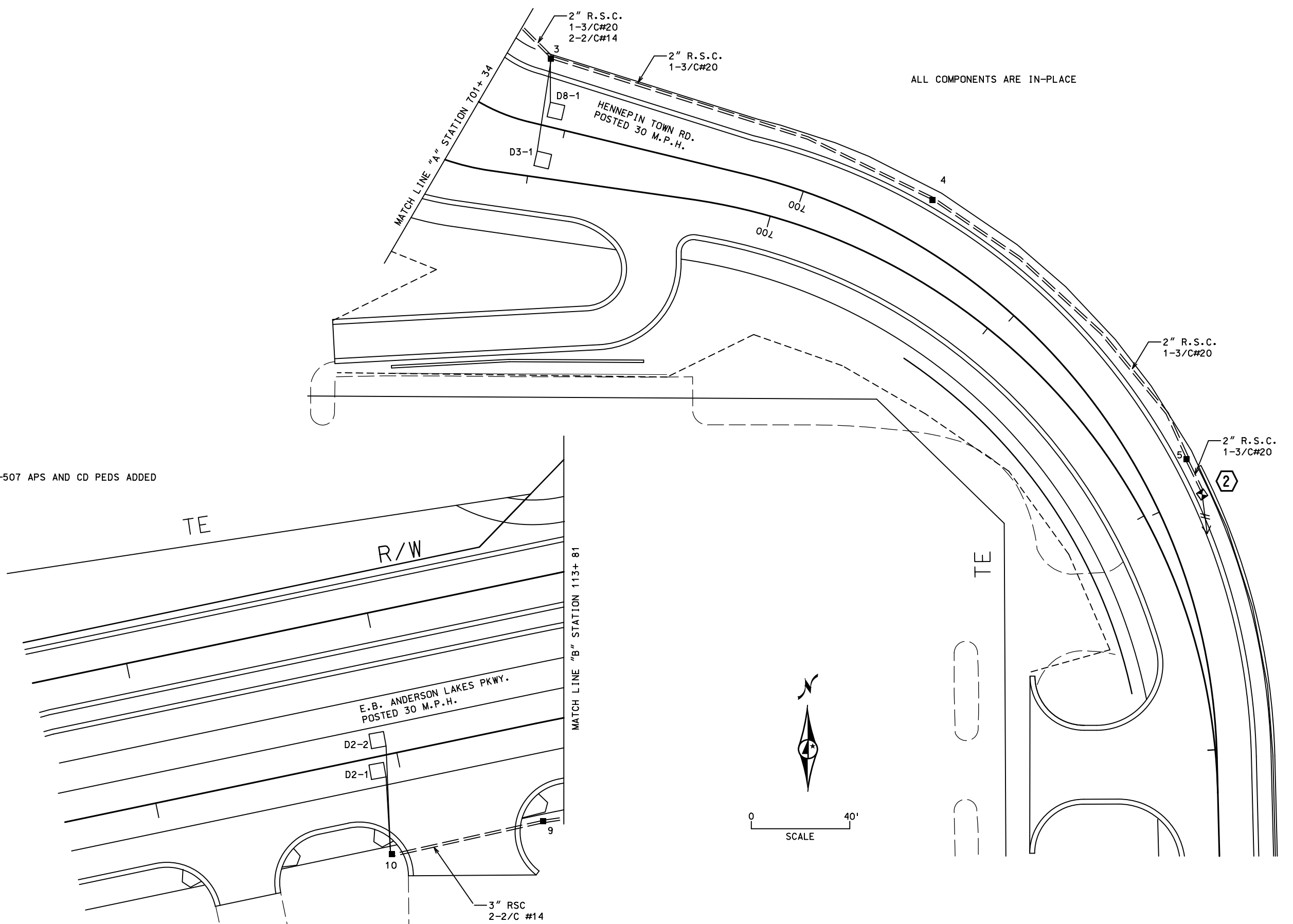
BY	DATE	REVISIONS	SYSTEM ID: 1726068	T.E.	S.A.P. NO.	DRAWN BY:	CKD BY:	DATE:
JT3	MAY 2018	PUSH BUTTONS, CABLE IN CONDUIT, CONDUIT TYPE	METER ADDRESS:		CERTIFIED BY _____			LIC. NO. _____ DATE: _____
		SP NO. 2776-02	OLD SYSTEM ID: 22109		STATE PROJ. NO.	(T.H.169)	SHEET NO. 1 OF 4 SHEETS	

INTERSECTION LAYOUT
 TH 169 AT ANDERSON LAKES PKWY/
 HENNEPIN TOWN RD
 W RAMP
 IN EDEN PRARIE, HENNEPIN COUNTY

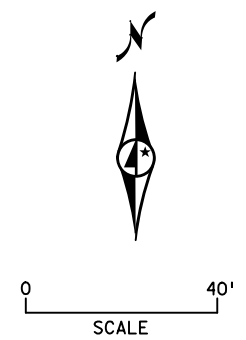
DISTRICT #: Metro
 PLOT NAME: match lines
 PATH & FILENAME: Projects\DM_ROS\69\0000\Traffic\Signals\22\09\T22\09_sgl.dgn

PLOTTED/REVISED: 18-MAY-2018

AS-BUILT OF SP 8825-507 APS AND CD PEDS ADDED



ALL COMPONENTS ARE IN-PLACE



BY	DATE	REVISIONS	SYSTEM ID: 1736068	T.E.	S.A.P. NO.	DRAWN BY:	CKD BY:	DATE:
JT3	MAY 2018	SP NO. 2776-02	METER ADDRESS:		CERTIFIED BY _____			LIC. NO. _____ DATE: _____
			OLD SYSTEM ID: 22109		STATE PROJ.NO.	(T.H.169)	SHEET NO. 2 OF 4 SHEETS	
INTERSECTION LAYOUT TH 169 AT ANDERSON LAKES PKWY/ HENNEPIN TOWN RD W RAMP IN EDEN PRARIE, HENNEPIN COUNTY								

DISTRICT #: Metro
 IPLOT NAME: notes
 PATH & FILENAME: Projects\DM罗斯\69\00000\Traffic\Signals\22\09\T22\09\T22\09\sgl.dgn
 PLOTTED/REVISED: 18-MAY-2018

A EQUIPMENT PAD
 3/4", 2" & 3" RSC STUBBED OUT OF
 CONTROLLER CABINET THREADED AND
 CAPPED BOTH ENDS

SERVICE CABINET
 CONTROLLER AND CABINET

4" RSC TO HH 1	3" RSC TO HH 1	4" RSC TO HH 20
2-12/C#12	2-12/C#12	4-12/C#12
3-3/C#12	4-3/C#12	6-3/C#12
3-3/C#20	9-2/C#14	1-3/C#20
8-2/C#14		10-2/C#14
		1-6PR#19

SERVICE CABINET TO CONTROLLER CABINET
 2" RSC
 2-1/C#6
 1-1/C#6 INS. GR.

SERVICE CABINET TO PANEL BOARD
 2" RSC
 3-1/C#2

SERVICE CABINET TO HH 20
 2" RSC
 4-3/C#12 (LUM)

HH 20 TO HH 1
 2" RSC
 2-3/C#12 (LUM)

B SOP - XCEL ENERGY

PB STA
 APS PB & SIGN (LT ARROW) PB2-1
 1" PVC TO HH7
 1-2/C#14

PB STA
 APS PB & SIGN (RT ARROW) PB2-2
 1" PVC TO HH20
 1-2/C#14

PB STA
 APS PB & SIGN (LT ARROW) PB4-1
 1" PVC TO HH12
 1-2/C#14

PB STA
 APS PB & SIGN (RT ARROW) PB4-2
 1" PVC TO HH8
 1-2/C#14

PB STA
 APS PB & SIGN (LT ARROW) PB6-1
 1" PVC TO HH17
 1-2/C#14

PB STA
 APS PB & SIGN (RT ARROW) PB6-2
 1" PVC TO HH13
 1-2/C#14

AS-BUILT OF SP 8825-507 APS AND CD PEDS ADDED

1 E.B. STATION 116+ 20 24' RT
 PA100 POLE FOUNDATION
 TYPE PA100-A-45-D40-9 (DAVIT AT 350 DEG)
 3-ONE WAY SIGNALS OVERHEAD (0', 17', & 29' FROM END OF MAST ARM)
 2-POLE MOUNTED ONE-WAY SIGNALS AT 45 DEG AND 225 DEG
 1-POLE MOUNTED CD PED HEAD AT 225 DEG
 ONE WAY EVP DETECTOR AND CONFIRMATORY
 LIGHT (PHASE 2 & 5)
 LUMINAIRE-250W HPS
 1-R9-3 SIGN (NO PED) FACING POLE 5
 2-TYPE D SIGNS
 3" RSC TO HH 20
 2-12/C#12
 3-3/C#12
 1-3/C#20
 1-3/C#12 (LUM)

2 N.B. STATION 697+ 99 19' RT
 PEDESTAL FOUNDATION
 8' PEDESTAL (INCLUDES BASE)
 TYPE 4A
 ONE WAY EVP DETECTOR (ADVANCE PHASE 3 & 8)
 2" RSC TO HH 5
 1-3/C#20

3 E.B. STATION 114+ 64 45' RT
 PA100 POLE FOUNDATION
 TYPE PA100-A-55-D40-9 (DAVIT AT 350 DEG)
 2-ONE WAY SIGNALS OVERHEAD (0', & 11' FROM
 END OF MAST ARM)
 2-POLE MOUNTED ONE-WAY SIGNALS AT 45 DEG AND 225 DEG
 2-POLE MOUNTED CD PED HEADS AT 45 DEG AND 225 DEG
 TWO WAY TWO CHANNEL EVP DETECTOR (PHASES 3 & 8, 4 & 7)
 AND CONFIRMATORY LIGHT (PHASE 4 & 7)
 LUMINAIRE-250W HPS
 1-R10-12 SIGN ADJACENT TO HEAD 4-3 (36" x 48")
 3" RSC TO HH 7
 2-12/C#12
 3-3/C#12
 1-3/C#20
 1-3/C#12 (LUM)

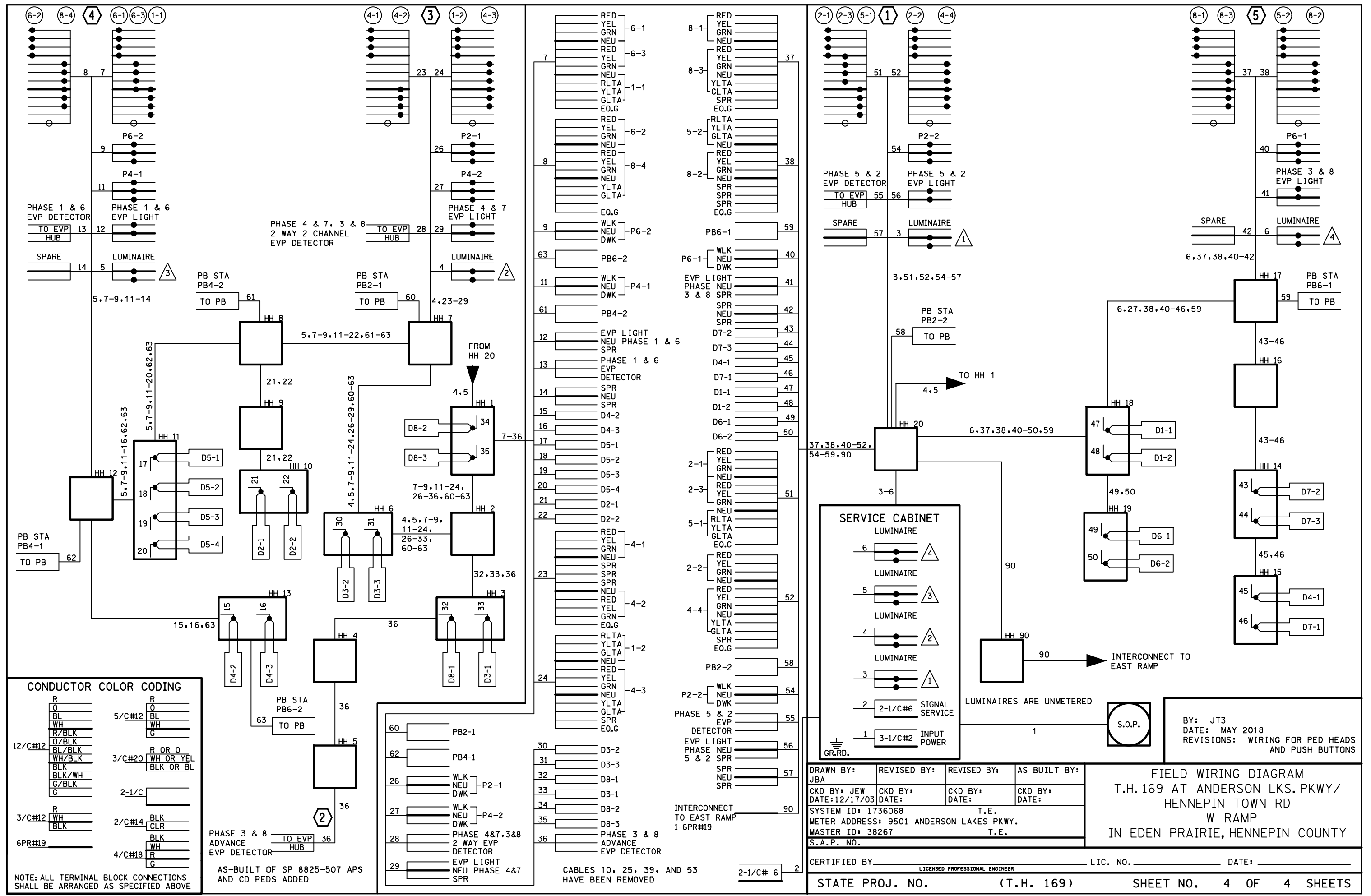
4 W.B. STATION 114+ 89 40' LT
 PA100 POLE FOUNDATION
 TYPE PA100-A-55-D40-9 (DAVIT AT 350 DEG)
 3-ONE WAY SIGNALS OVERHEAD (0', 11', & 23'
 FROM END OF MAST ARM)
 2-POLE MOUNTED ONE-WAY SIGNALS AT 45 DEG AND 225 DEG
 2-POLE MOUNTED CD PED HEADS AT 45 DEG AND 225 DEG
 ONE WAY EVP DETECTOR AND CONFIRMATORY
 LIGHT (PHASE 1 & 6)
 LUMINAIRE-250W HPS
 3" RSC TO HH 12
 2-12/C#12
 4-3/C#12
 1-3/C#20
 1-3/C#12 (LUM)

5 W.B. STATION 116+ 22 46' LT
 PA100 POLE FOUNDATION
 TYPE PA100-A-55-D40-9 (DAVIT AT 350 DEG)
 2-ONE WAY SIGNALS OVERHEAD (0', 17'
 FROM END OF MAST ARM)
 2-POLE MOUNTED ONE-WAY SIGNALS AT 45 DEG AND 225 DEG
 1-POLE MOUNTED CD PED HEAD AT 45 DEG
 ONE WAY EVP CONFIRMATORY
 LIGHT (PHASE 3 & 8)
 LUMINAIRE-250W HPS
 1-R10-12 SIGN ADJACENT TO HEAD 8-3 (36" x 48")
 1-R9-3 SIGN (NO PED) FACING POLE 1
 3" RSC TO HH 17
 2-12/C#12
 3-3/C#12
 1-3/C#12 (LUM)

BY	DATE	REVISIONS	SYSTEM ID: 1736068	T.E.	INTERSECTION LAYOUT TH 169 AT ANDERSON LAKES PKWY/ HENNEPIN TOWN RD W RAMP IN EDEN PRARIE, HENNEPIN COUNTY	S.A.P. NO.	DRAWN BY:	CKD BY:	DATE:	
JT3	MAY 2018	CD PED HEADS, LUMINAIRES SP NO. 2776-02	METER ADDRESS:			CERTIFIED BY _____	LIC. NO. _____	DATE: _____		
			OLD SYSTEM ID: 22109			STATE PROJ.NO. (T.H.169)	SHEET NO. 3 OF 4 SHEETS			

PLOTTED/REVISED: 18-MAY-2018

DISTRICT #: Metro
PLOT NAME: wiring
PATH & FILENAME: Projects\DM_POS\690000\Traffic\Signal\22109\T22109_sgl.dgn



CONDUCTOR COLOR CODING

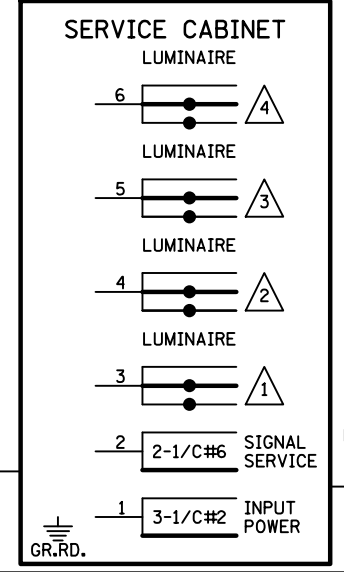
R	R
O	O
BL	BL
WH	WH
R/BLK	R OR O
O/BLK	WH OR YEL
BL/BLK	BLK OR BL
WH/BLK	
BLK/WH	
G/BLK	
G	
2-1/C	
R	BLK
3/C#12	WH
WH	CLR
BLK	WH
6PR#19	R
	G

NOTE: ALL TERMINAL BLOCK CONNECTIONS SHALL BE ARRANGED AS SPECIFIED ABOVE

AS-BUILT OF SP 8825-507 APS AND CD PEDS ADDED

60	PB2-1
62	PB4-1
26	WLK NEU DWK P2-1
27	WLK NEU DWK P4-2
28	PHASE 4&7,3&8 2 WAY EVP DETECTOR
29	EVP LIGHT NEU PHASE 4&7 SPR

CABLES 10, 25, 39, AND 53 HAVE BEEN REMOVED



DRAWN BY: JBA	REVISED BY:	REVISED BY:	AS BUILT BY:
CKD BY: JEW	CKD BY:	CKD BY:	CKD BY:
DATE: 12/17/03	DATE:	DATE:	DATE:
SYSTEM ID: 1736068	T.E.		
METER ADDRESS: 9501 ANDERSON LAKES PKWY.	T.E.		
MASTER ID: 38267	T.E.		
S.A.P. NO.			

CERTIFIED BY _____ LIC. NO. _____ DATE: _____

STATE PROJ. NO. (T.H. 169) SHEET NO. 4 OF 4 SHEETS