

SIGNAL HEAD CHART

FACE	R	Y	G
2-1, 2-2, 2-3	○	○	○
6-1, 6-2, 6-3	○	○	○
4-1, 4-2	○	○	○
5-1, 5-2	◀	◀	◀
4-3, 4-4	○	○	○

-ALL SIGNAL INDICATIONS ARE 12"

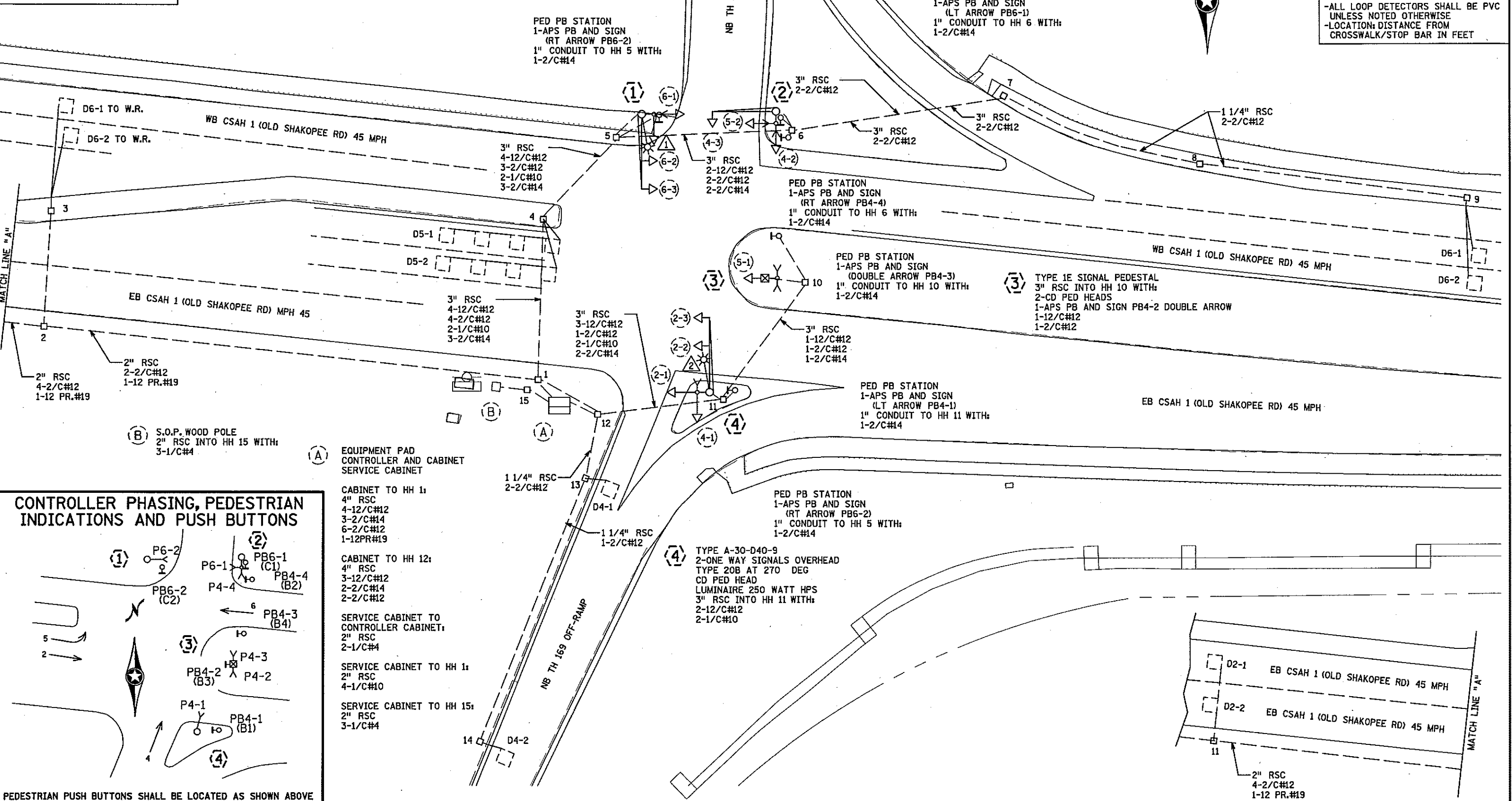
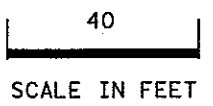
LOOP DETECTOR CHART

NUMBER	SIZE (FT)	LOCATION
D2-1, D2-2	6X6	340
D5-1	2-6X6	20 & 50
D5-2	2-6X6	5 & 35
D6-1, D6-2	6X6	340
D4-1	6X6	70
D4-2	6X6	170

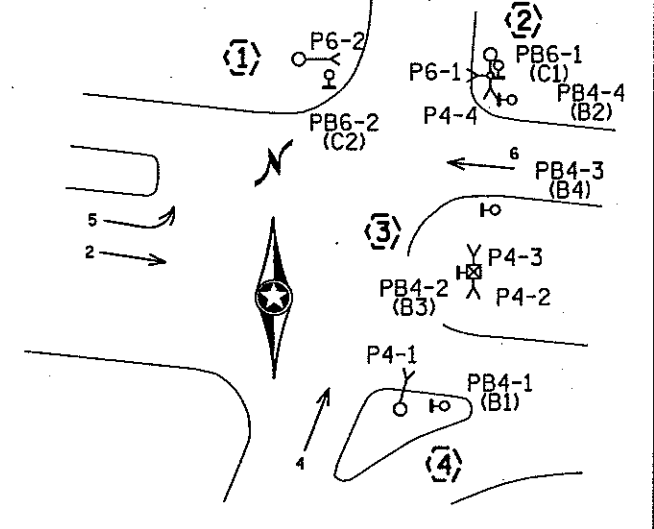
-ALL LOOP DETECTORS SHALL BE PVC UNLESS NOTED OTHERWISE
-LOCATION: DISTANCE FROM CROSSWALK/STOP BAR IN FEET

(1) TYPE A-30-D40-9
2-ONE WAY SIGNALS OVERHEAD
TYPE 20B AT 270 DEG
CD PED HEAD AT 270 DEG
LUMINAIRE 250 WATT HPS
3" RSC TO HH 5 WITH:
2-12/C#12
2-1/C#10

(2) TYPE A-25
1-ONE WAY SIGNAL OVERHEAD
TYPE 20C AT 270 DEG
2-CD PED HEADS AT 0 AND 270 DEG
3" RSC INTO HH 6 WITH:
2-12/C#12



CONTROLLER PHASING, PEDESTRIAN INDICATIONS AND PUSH BUTTONS



- (A) EQUIPMENT PAD
CONTROLLER AND CABINET
SERVICE CABINET
- (B) S.O.P. WOOD POLE
2" RSC INTO HH 15 WITH:
3-1/C#4
- CABINET TO HH 1:
4" RSC
4-12/C#12
3-2/C#14
6-2/C#12
1-12PR#19
- CABINET TO HH 12:
4" RSC
3-12/C#12
2-2/C#14
2-2/C#12
- SERVICE CABINET TO CONTROLLER CABINET:
2" RSC
2-1/C#4
- SERVICE CABINET TO HH 1:
2" RSC
4-1/C#10
- SERVICE CABINET TO HH 15:
2" RSC
3-1/C#4

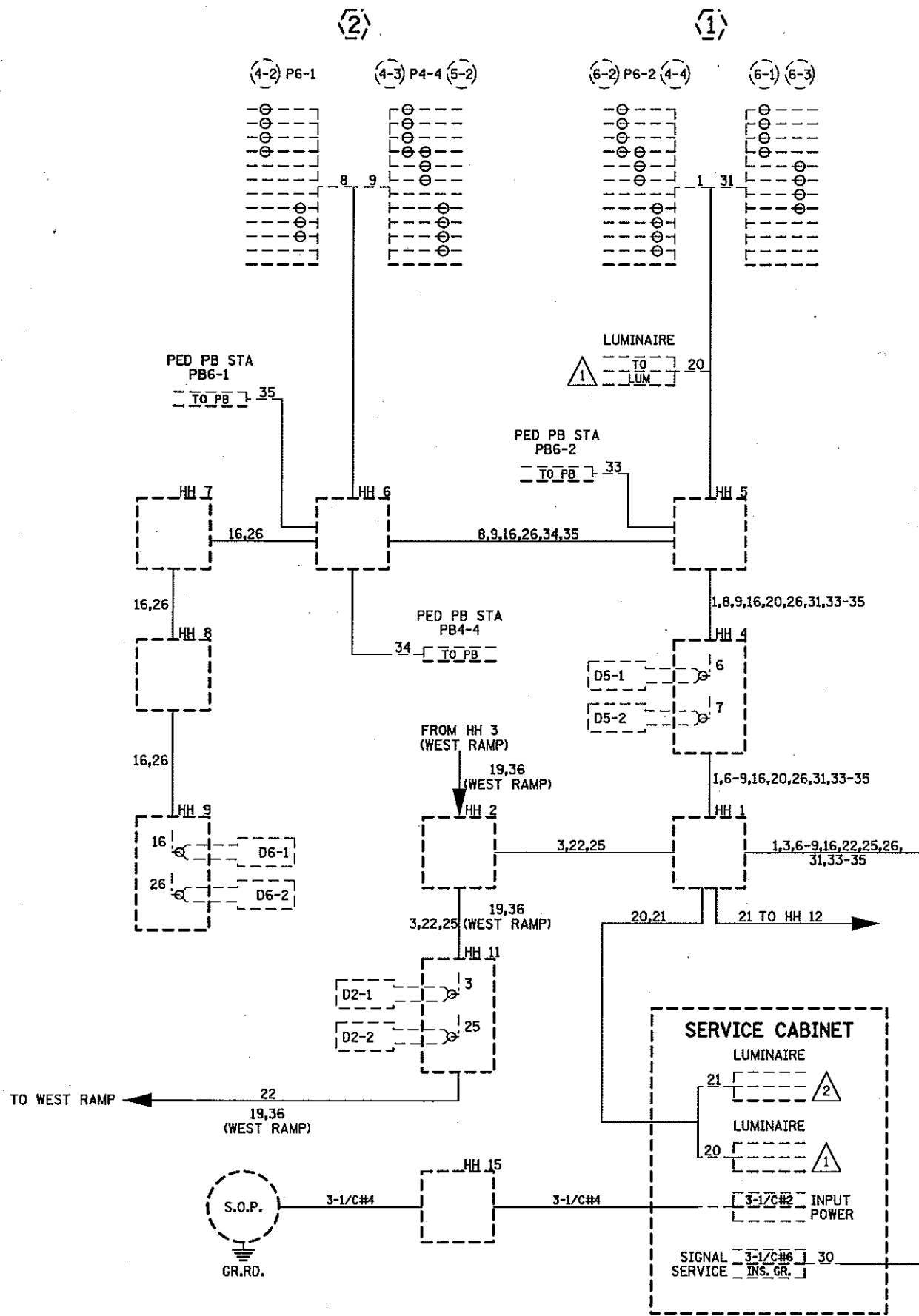
PEDESTRIAN PUSH BUTTONS SHALL BE LOCATED AS SHOWN ABOVE

IPILOT NAME: 1735910R
PATH & FILENAME: Projects\DM_R05\69\0000\Traffic\Signals\21822\1735910R.dgn

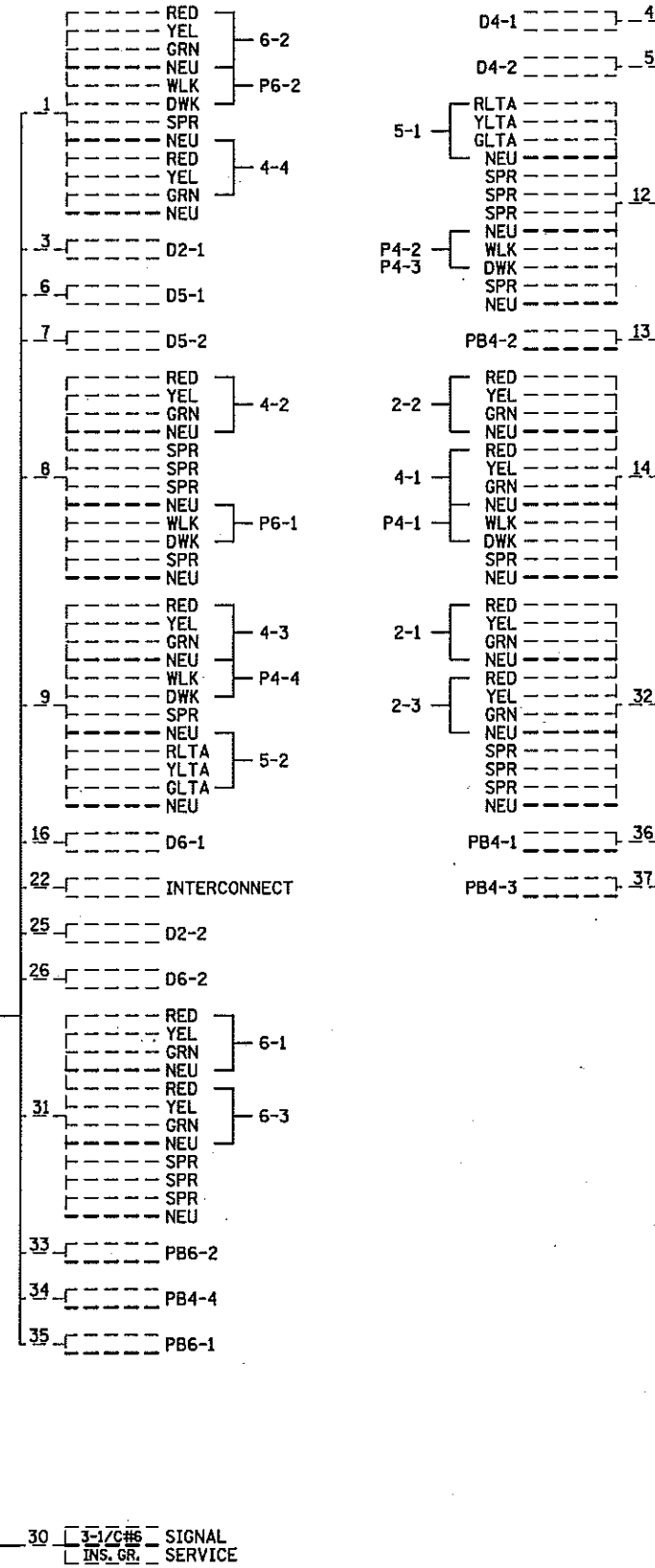
BY	DATE	REVISIONS	SYSTEM ID: 1735910	T.E.	S.A.P. NO.	DRAWN BY:	CKD BY:	DATE:
SJK	FEB 2017	ADDED APS BUTTONS	METER ADDRESS:					
J3T	11-02-18	AS-BUILT FOR SP 8825-507	OLD SYSTEM ID: 21822					
INTERSECTION LAYOUT T.H. 169 AT CSAH 1 (OLD SHAKOPEE RD) E RAMP BLOOMINGTON, HENNEPIN COUNTY					STATE PROJ.NO.	(T.H. 169)	SHEET NO. 1 OF 2 SHEETS	

PLOTTED/REVISED: 5-NOV-2018

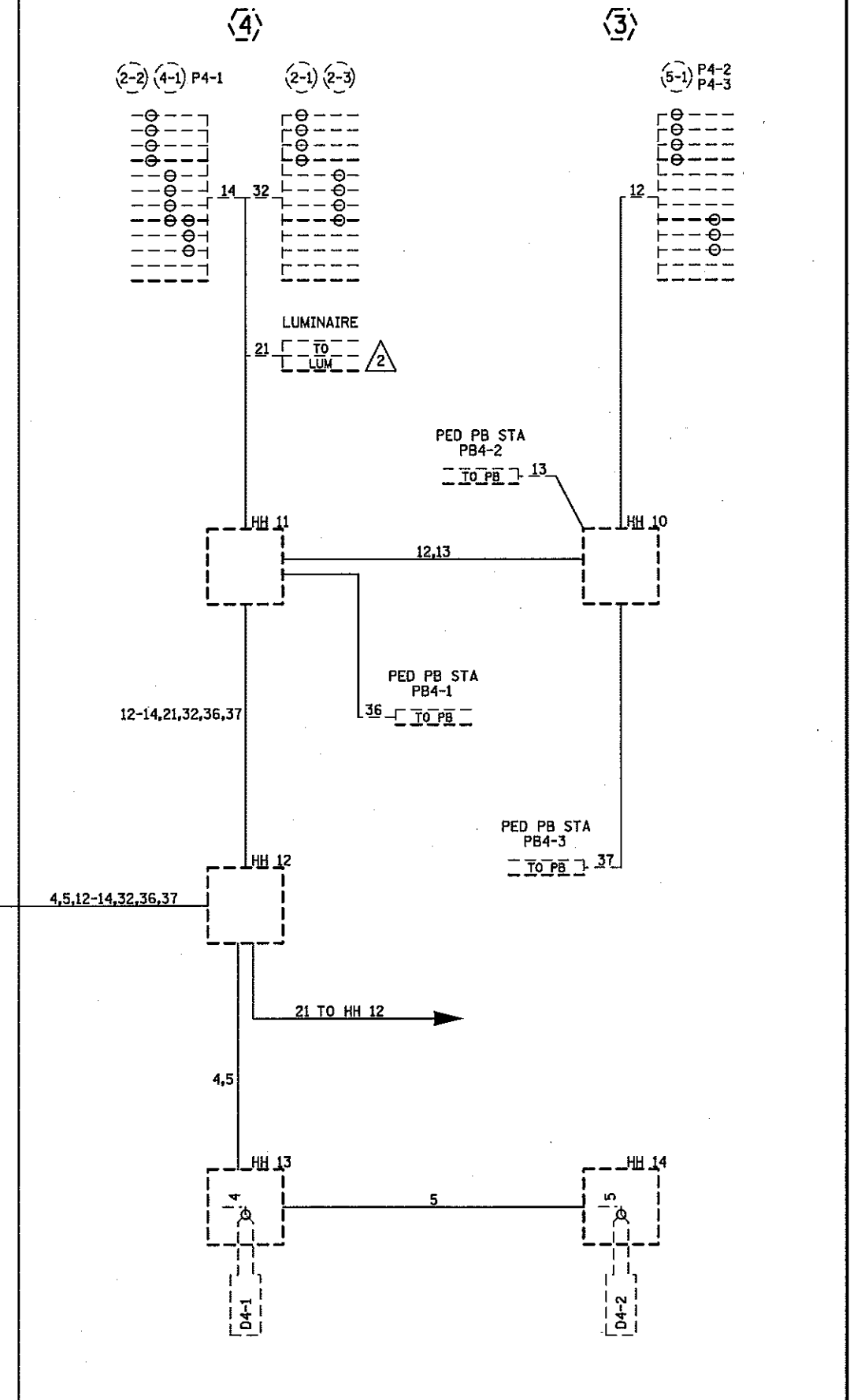
IPLOT NAME: 173591OR
PATH & FILENAME: Projects\DM_R05\169\0000\Traffic\Signals\21822\173591OR.dgn



CONTROLLER CABINET



CABLES 2,10,11 AND 15 HAVE BEEN REMOVED



BY	DATE	REVISIONS
SJK	FEB 2017	ADDED APS BUTTONS
J3T	11-05-18	AS-BUILT FOR DP 8825-507

SYSTEM ID: 1735910	T.E.
METER ADDRESS:	
OLD SYSTEM ID: 21822	

FIELD WIRING DIAGRAM
T.H. 169 AT CSAH 1 (OLD SHAKOPEE RD) E RAMP
BLOOMINGTON, HENNEPIN COUNTY

S.A.P. NO.	DRAWN BY:	CKD BY:	DATE:
STATE PROJ. NO.	(T.H. 169)	SHEET NO. 2 OF 2 SHEETS	