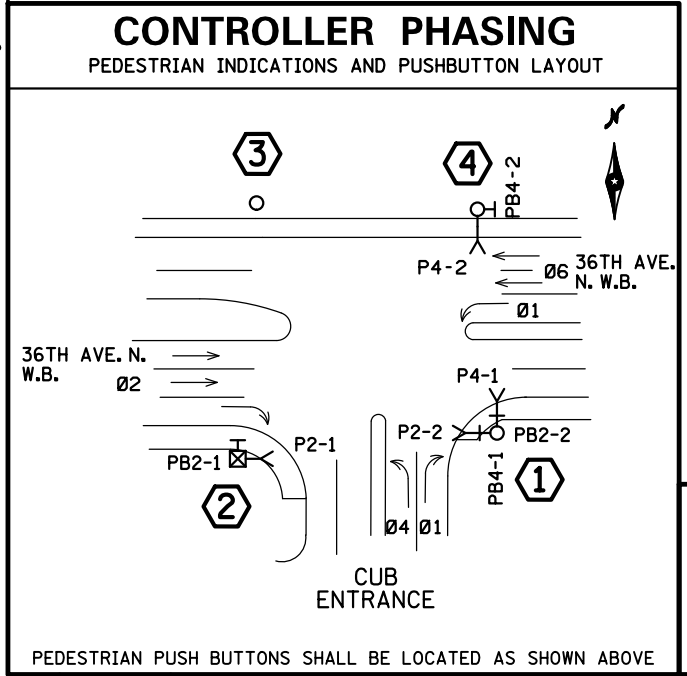
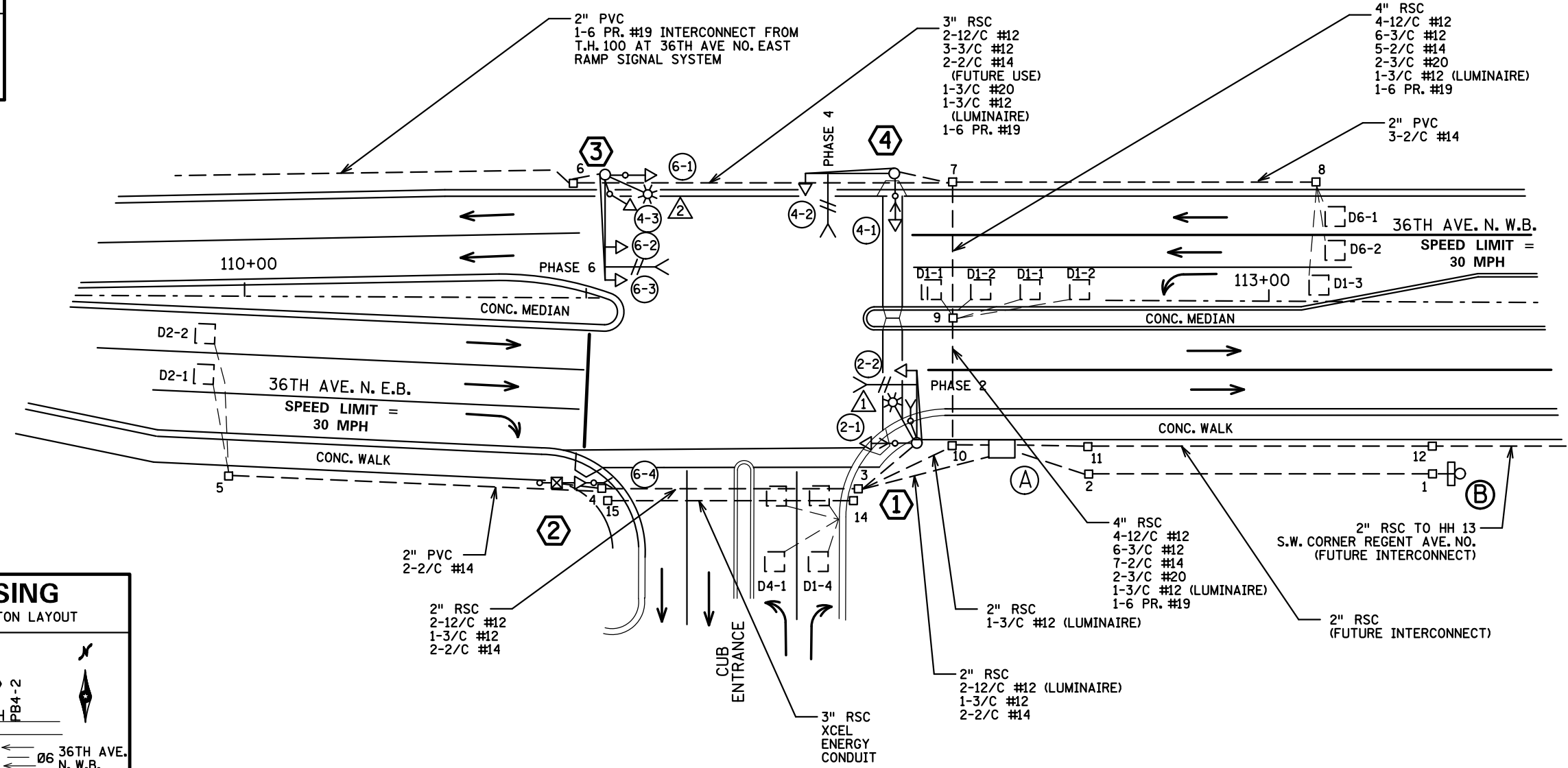
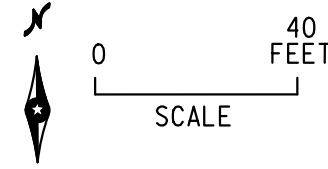
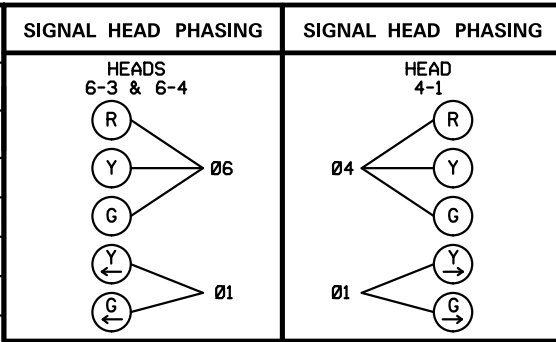


PLOTTED/REVISED: 7/15/2014

PVC LOOP DETECTORS			
NUMBER	PHASE	SIZE (FEET)	LOCATION (FEET)
D1-1	1	2 - 6 X 6	5 & 35
D1-2	1	2 - 6 X 6	20 & 50
D1-3	1	1 - 6 X 6	115
D1-4	4	2 - 6 X 6	5 & 20
D2-1	2	1 - 6 X 6	120
D2-2	2	1 - 6 X 6	120
D4-1	4	2 - 6 X 6	5 & 20
D6-1	6	1 - 6 X 6	120
D6-2	6	1 - 6 X 6	120

LOCATION = DISTANCE IN FEET FROM VEHICLE STOP BAR/PEDESTRIAN CROSSWALK TO FRONT EDGE OF DETECTOR

SIGNAL HEAD CHART					
FACE NO.	ALL SIGNAL INDICATIONS TO BE 12 INCH				
	R	Y	G	Y	G
2-1, 2-2	○	○	○		
4-1	○	○	○	→	→
4-2, 4-3	○	○	○		
6-1, 6-2	○	○	○		
6-3, 6-4	○	○	○	←	←



SIGNAL SYSTEM OPERATION

- THE SIGNAL SYSTEM FLASH MODE IS ALL RED.
- PHASES 2 AND 6 ARE ON VEHICLE RECALL.
- NORMAL OPERATION IS 4 PHASE. PHASE 1 SHALL BE A PROTECTED/PERMISSIVE LEFT TURN.

BY	DATE	REVISIONS
DC	08/01/14	AS-BUILT OF SP 2735-160

SYSTEM ID: 21911 T.E.
 METER ADDRESS: 5107 36TH AVE N.
 MASTER ID: T.E.

INTERSECTION LAYOUT
36TH AVE N.
IN CRYSTAL, HENNEPIN COUNTY

S.A.P. NO.	DRAWN BY:	CKD BY:	DATE:
CERTIFIED BY _____	LIC. NO. _____	DATE: _____	
STATE PROJ. NO. (T.H.100)		SHEET NO. 1 OF 3 SHEETS	

DISTRICT #: METRO
 IPLOT NAME: LAYOUT
 PATH & FILENAME: IP_PWP-d0782904T2191_SGL.dgn

(A) EQUIPMENT PAD
 CONTROLLER AND CABINET
 SERVICE EQUIPMENT
 CONTROLLER CABINET TO HH 10:
 4" RSC
 4-12/C #12
 6-3/C #12
 7-2/C #14
 2-3/C #20
 1- 6 PR. #19 INTERCONNECT TO SIGNAL SYSTEM
 AT T.H. 100 AND 36TH AVE NO. EAST RAMP
 CONTROLLER CABINET TO HH 3:
 4" RSC
 4-12/C #12
 3-3/C #12
 4-2/C #14
 1-3/C #20
 LOAD CENTER TO
 CONTROLLER CABINET:
 1-1/4" RSC
 2-1/C #6
 1-1/C #6 BR. GR.
 LOAD CENTER TO HH 2:
 2" RSC
 3-1/C # 2
 LOAD CENTER TO HH 10:
 2" RSC
 2-3/C #12 (LUMINAIRE)
 CABINET TO HH 11:
 2" RSC FOR FUTURE INTERCONNECT
 CABINET STUB OUT
 1" RSC FOR FUTURE PHONE LINE
 (THREADED AND CAPPED BOTH ENDS)

(B) S.O.P.
 WOOD POLE
 2" RSC RISER AND WEATHERHEAD
 METER SOCKET
 ENCLOSED CIRCUIT BREAKER
 2" RSC BELOW CIRCUIT BREAKER
 INTO HH 1 WITH 3-1/C #2

(1) PA85 POLE FOUNDATION
 TYPE PA85-A-20-D40-9 (DAVIT AT 350 DEG)
 ONE WAY SIGNAL OVERHEAD AT 0'
 TYPE 30A POLE MOUNTED AT 0 DEG
 TYPE 10B POLE MOUNTED AT 270 DEG
 PEDESTRIAN PUSH BUTTON AND SIGN
 (R10-4C)
 ONE WAY EVP DETECTOR AND
 CONFIRMATORY LIGHT PHASE 2
 LUMINAIRE - 200 WATT HPS
 EXTEND INTO HH 6:
 3" RSC
 2-12/C #12
 2-3/C #12
 1-3/C #20
 1-3/C #12 (LUMINAIRE)

(3) PA85 POLE FOUNDATION
 TYPE PA85-A-30-D40-9 (DAVIT AT 350 DEG)
 2-ONE WAY SIGNAL OVERHEAD AT 0' AND 11'
 TYPE 10A POLE MOUNTED AT 0 DEG AND 270 DEG
 R10-12 SIGN (36" X 48") MOUNTED 3 FEET
 FROM END OF MAST ARM
 R9-3 SIGN POLE MOUNTED FACING POLE 2
 ONE WAY EVP DETECTOR AND
 CONFIRMATORY LIGHT PHASE 6
 LUMINAIRE - 200 WATT HPS
 EXTEND INTO HH 11:
 3" RSC
 2-12/C #12
 3-3/C #12
 1-3/C #20
 1-3/C #12 (LUMINAIRE)

(2) PEDESTAL FOUNDATION
 10' SIGNAL PEDESTAL POLE PLUS BASE
 TYPE 1C
 R9-3 SIGN PEDESTAL MOUNTED
 (FACING POLE 3)
 CONFIRMATORY LIGHT PHASE 4
 PEDESTRIAN PUSH BUTTON AND SIGN
 (R10-4C)
 EXTEND INTO TO HH 7:
 3" RSC
 2-12/C #12
 1-3/C #12

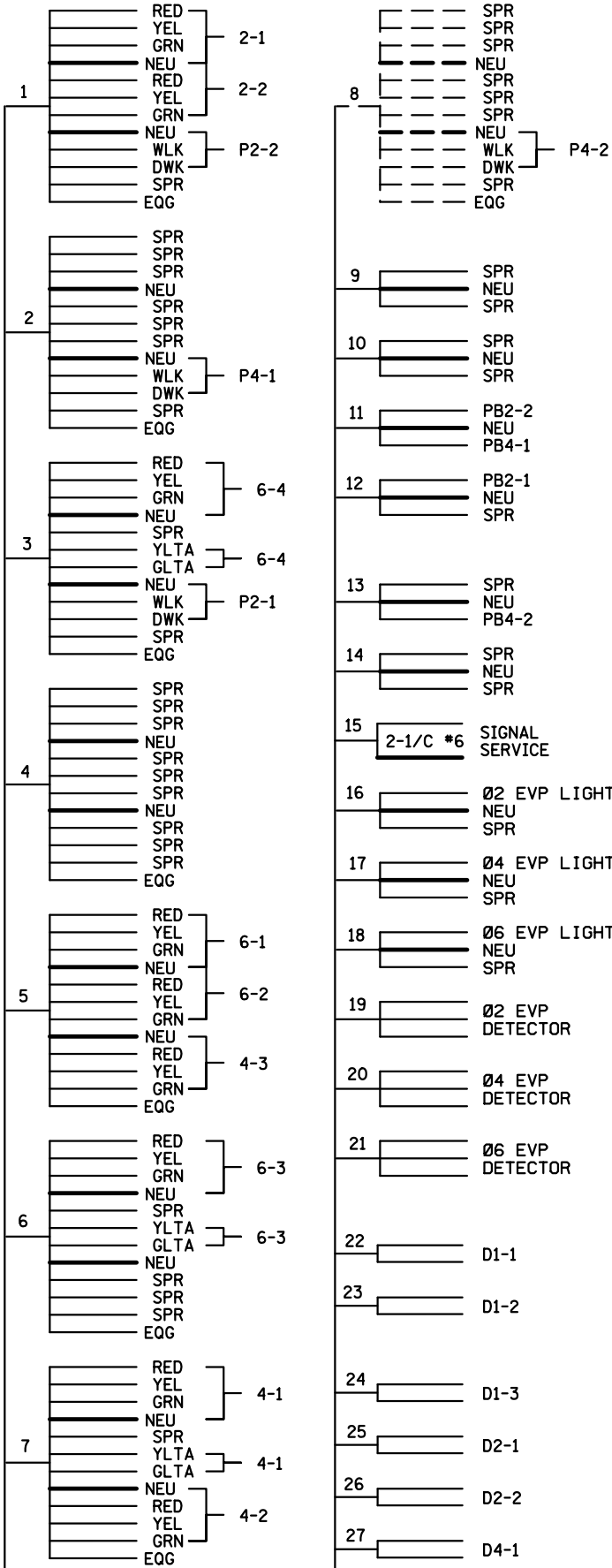
(4) PA85 POLE FOUNDATION
 TYPE PA85-A-25
 ONE WAY SIGNAL OVERHEAD AT 0'
 TYPE 10B POLE MOUNTED AT 270 DEG
 ONE WAY EVP DETECTOR AND
 CONFIRMATORY LIGHT PHASE 4
 PEDESTRIAN PUSH BUTTON AND SIGN
 (R10-4C)
 EXTEND INTO TO HH 12:
 3" RSC
 2-12/C #12
 3-3/C #12
 1-3/C #20

BY	DATE	REVISIONS	SYSTEM ID: 21911	T.E.	S.A.P. NO.	DRAWN BY:	CKD BY:	DATE:
DC	08/01/14	AS-BUILT OF SP 2735-160	METER ADDRESS: 5107 36TH AVE N.		CERTIFIED BY _____	LIC. NO. _____	DATE: _____	
			MASTER ID:	T.E.	MATCH LINES 36TH AVE N. IN CRYSTAL, HENNEPIN COUNTY			
					STATE PROJ. NO.	(T.H. 100)	SHEET NO.	2 OF 3 SHEETS

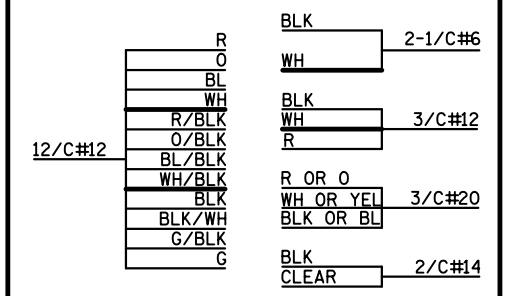
PLOTTED/REVISED: 7/15/2014

DISTRICT #: METRO
PLOT NAME: WIRING DIAGRAM
PATH & FILENAME: IP_PWP-d0782904T2191_SGL.dgn

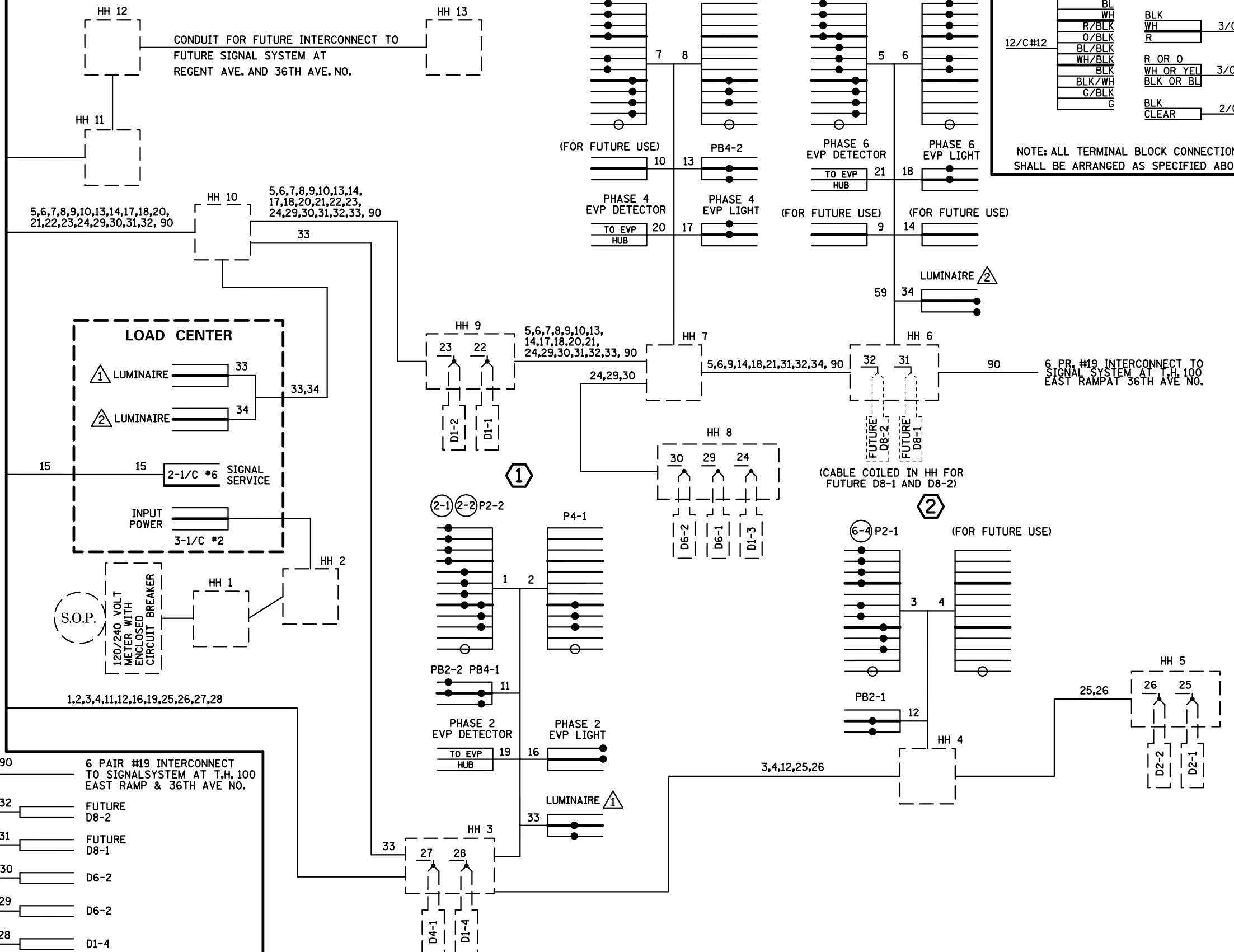
CONTROLLER CABINET



CONDUCTOR COLOR CODING



NOTE: ALL TERMINAL BLOCK CONNECTIONS SHALL BE ARRANGED AS SPECIFIED ABOVE



BY	DATE	REVISIONS
DC	08/01/14	AS-BUILT OF SP 2735-160

SYSTEM ID: 21911 T.E.
 METER ADDRESS: 5107 36TH AVE N.
 MASTER ID: T.E.

FIELD WIRING DIAGRAM 36TH AVE N. IN CRYSTAL, HENNEPIN COUNTY

S.A.P. NO.	DRAWN BY:	CKD BY:	DATE:
CERTIFIED BY _____	LIC. NO. _____	DATE: _____	
STATE PROJ. NO.	(T.H. 100)	SHEET NO.	3 OF 3 SHEETS