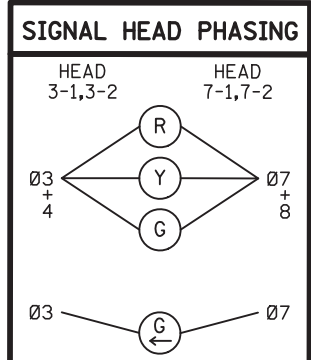


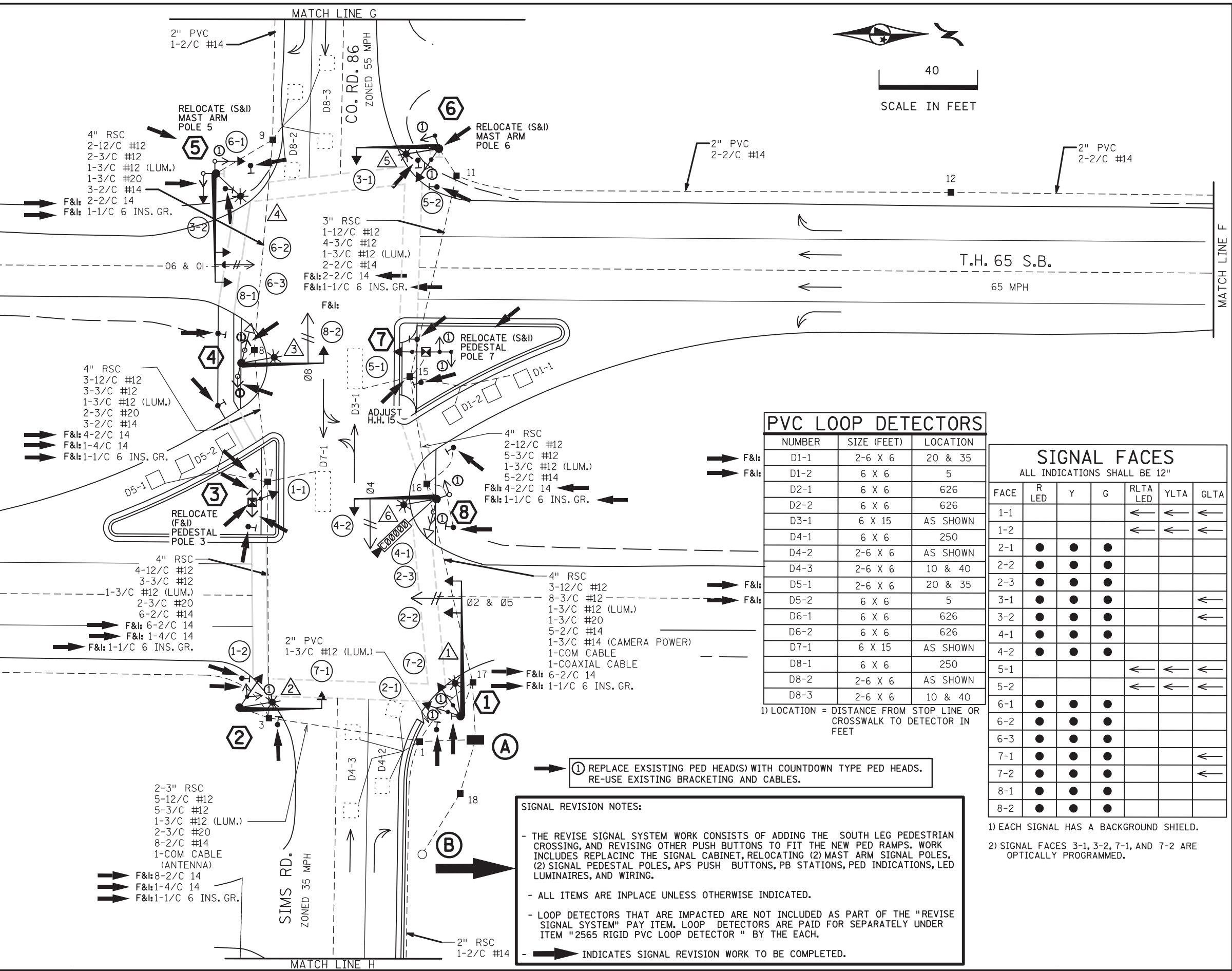
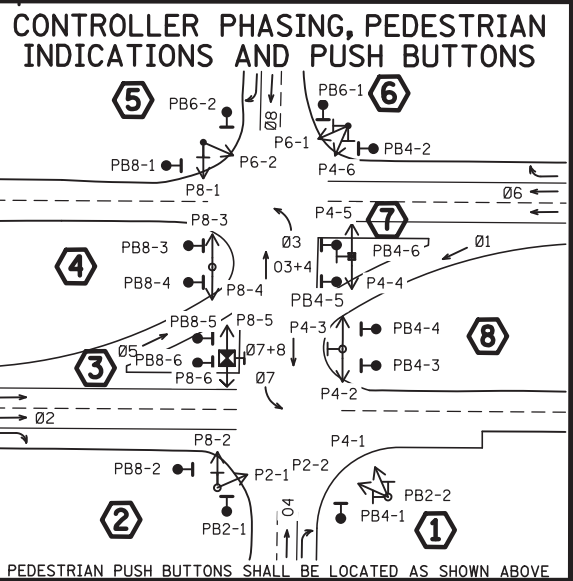
PLOTTED/REVISED: 14-DEC-2023

DISTRICT #: Metro  
PLOT NAME: T22208A\_SGL.J3  
FILENAME: Projects\DM\_FOS\06500000\Traffic\Signals\27.98.22208\_CSAH (86)\Sims Ave - 233TH 1736136\PEINDING\T22208A\_SGL.DGN



### SIGNAL SYSTEM OPERATION

- THE SIGNAL SYSTEM FLASH MODE IS ALL RED.
- PHASES 1 AND 5 ARE PROTECTED LEFT TURN PHASES. PHASES 3 AND 7 ARE INSIDE CLEARANCE PHASES.



### PVC LOOP DETECTORS

NUMBER	SIZE (FEET)	LOCATION
D1-1	2-6 X 6	20 & 35
D1-2	6 X 6	5
D2-1	6 X 6	626
D2-2	6 X 6	626
D3-1	6 X 15	AS SHOWN
D4-1	6 X 6	250
D4-2	2-6 X 6	AS SHOWN
D4-3	2-6 X 6	10 & 40
D5-1	2-6 X 6	20 & 35
D5-2	6 X 6	5
D6-1	6 X 6	626
D6-2	6 X 6	626
D7-1	6 X 15	AS SHOWN
D8-1	6 X 6	250
D8-2	2-6 X 6	AS SHOWN
D8-3	2-6 X 6	10 & 40

1) LOCATION = DISTANCE FROM STOP LINE OR CROSSWALK TO DETECTOR IN FEET

### SIGNAL FACES

ALL INDICATIONS SHALL BE 12"

FACE	R LED	Y	G	RLTA LED	YLTA	GLTA
1-1				←	←	←
1-2				←	←	←
2-1	●	●	●			
2-2	●	●	●			
2-3	●	●	●			
3-1	●	●	●			←
3-2	●	●	●			←
4-1	●	●	●			
4-2	●	●	●			
5-1				←	←	←
5-2				←	←	←
6-1	●	●	●			
6-2	●	●	●			
6-3	●	●	●			
7-1	●	●	●			←
7-2	●	●	●			←
8-1	●	●	●			
8-2	●	●	●			

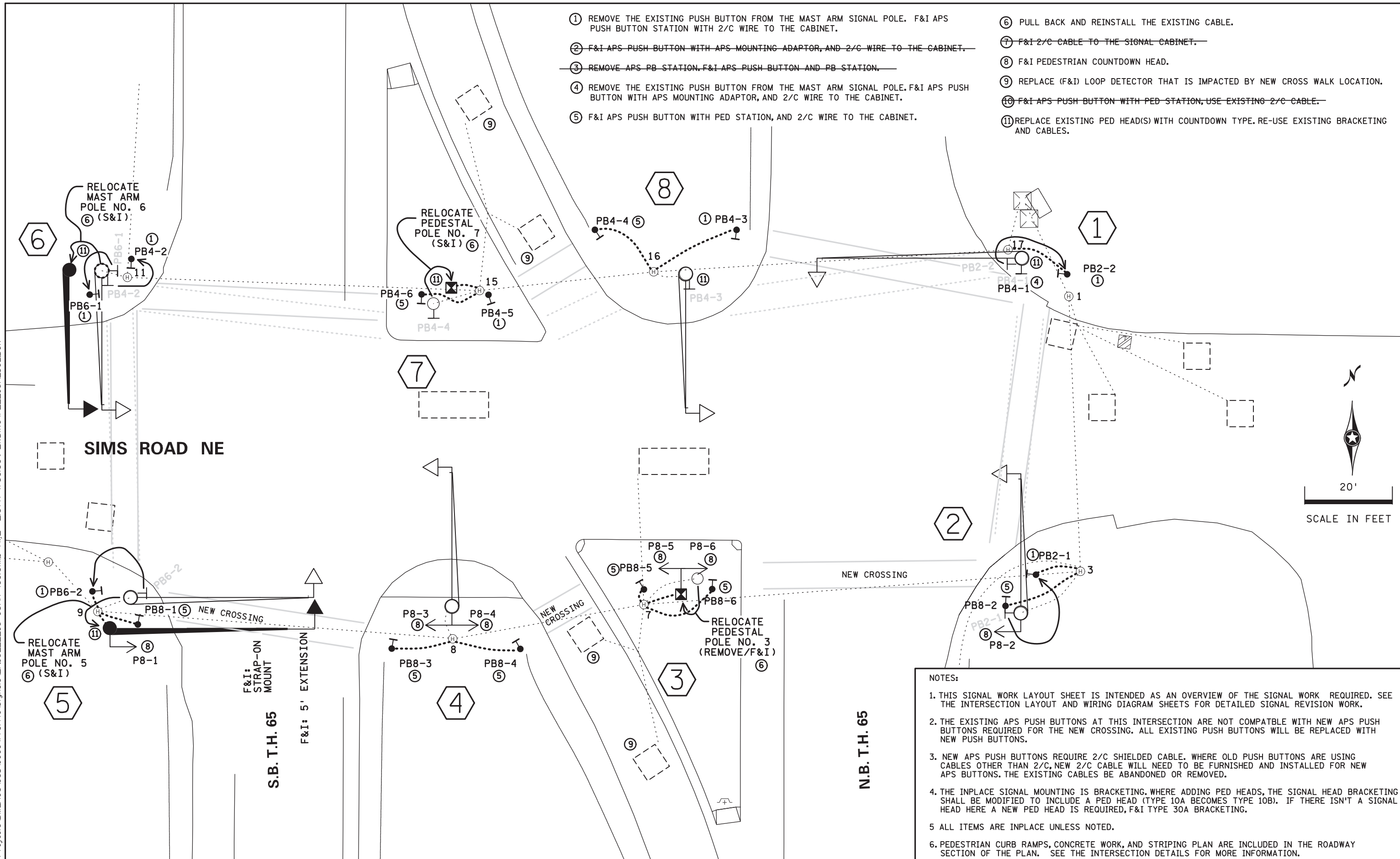
### SIGNAL REVISION NOTES:

- THE REVISE SIGNAL SYSTEM WORK CONSISTS OF ADDING THE SOUTH LEG PEDESTRIAN CROSSING, AND REVISING OTHER PUSH BUTTONS TO FIT THE NEW PED RAMPS. WORK INCLUDES REPLACING THE SIGNAL CABINET, RELOCATING (2) MAST ARM SIGNAL POLES, (2) SIGNAL PEDESTAL POLES, APS PUSH BUTTONS, PB STATIONS, PED INDICATIONS, LED LUMINAIRES, AND WIRING.
- ALL ITEMS ARE INPLACE UNLESS OTHERWISE INDICATED.
- LOOP DETECTORS THAT ARE IMPACTED ARE NOT INCLUDED AS PART OF THE "REVISE SIGNAL SYSTEM" PAY ITEM. LOOP DETECTORS ARE PAID FOR SEPARATELY UNDER ITEM "2565 RIGID PVC LOOP DETECTOR" BY THE EACH.
- INDICATES SIGNAL REVISION WORK TO BE COMPLETED.

BY	DATE	REVISIONS	SYSTEM ID: 1736136	T.E. 103237	REVISE SIGNAL SYSTEM "S" INTERSECTION LAYOUT TH 65 AT CSAH 86 (SIMS AVE.) EAST BETHEL, ANOKA COUNTY	S.P. 002-632-021, S.P. 106-020-040, S.P. 106-125-009	DRAWN BY: HRL	CKD BY: CDB	DATE: 10/10/23
			METER ADDRESS:			CERTIFIED BY: <i>Gregory Ken</i>	LIC. NO. 26829	DATE: 12/11/23	
			OLD SYSTEM ID: 22208			STATE PROJ. NO. 0208-165 (T.H.65)	SHEET NO. SS78 OF SS87 SHEETS		

PLOTTED/REVISED: 3-NOV-2023

DISTRICT \*: Metro  
PLOT NAME: T22208A\_SGL\_L2  
FILENAME: Projects\DM\_FOS\06500001\Traffic\Signals\27.98.22208 CSAH (86)\SIMS AVE -213TH 1736136\PENDING\T22208A\_SGL.DGN



- ① REMOVE THE EXISTING PUSH BUTTON FROM THE MAST ARM SIGNAL POLE. F&I APS PUSH BUTTON STATION WITH 2/C WIRE TO THE CABINET.
- ② F&I APS PUSH BUTTON WITH APS MOUNTING ADAPTOR, AND 2/C WIRE TO THE CABINET.
- ③ REMOVE APS PB STATION, F&I APS PUSH BUTTON AND PB STATION.
- ④ REMOVE THE EXISTING PUSH BUTTON FROM THE MAST ARM SIGNAL POLE. F&I APS PUSH BUTTON WITH APS MOUNTING ADAPTOR, AND 2/C WIRE TO THE CABINET.
- ⑤ F&I APS PUSH BUTTON WITH PED STATION, AND 2/C WIRE TO THE CABINET.
- ⑥ PULL BACK AND REINSTALL THE EXISTING CABLE.
- ⑦ F&I 2/C CABLE TO THE SIGNAL CABINET.
- ⑧ F&I PEDESTRIAN COUNTDOWN HEAD.
- ⑨ REPLACE (F&I) LOOP DETECTOR THAT IS IMPACTED BY NEW CROSS WALK LOCATION.
- ⑩ F&I APS PUSH BUTTON WITH PED STATION, USE EXISTING 2/C CABLE.
- ⑪ REPLACE EXISTING PED HEAD(S) WITH COUNTDOWN TYPE. RE-USE EXISTING BRACKETING AND CABLES.

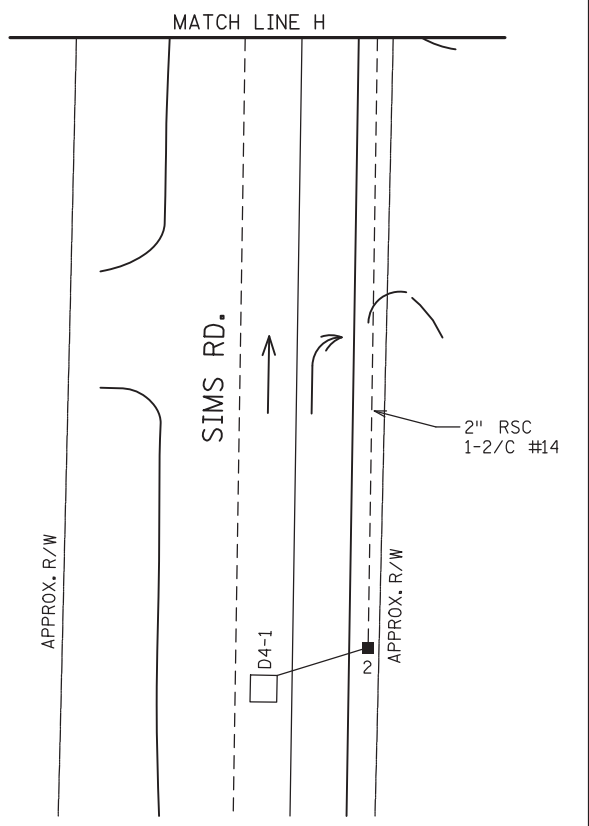
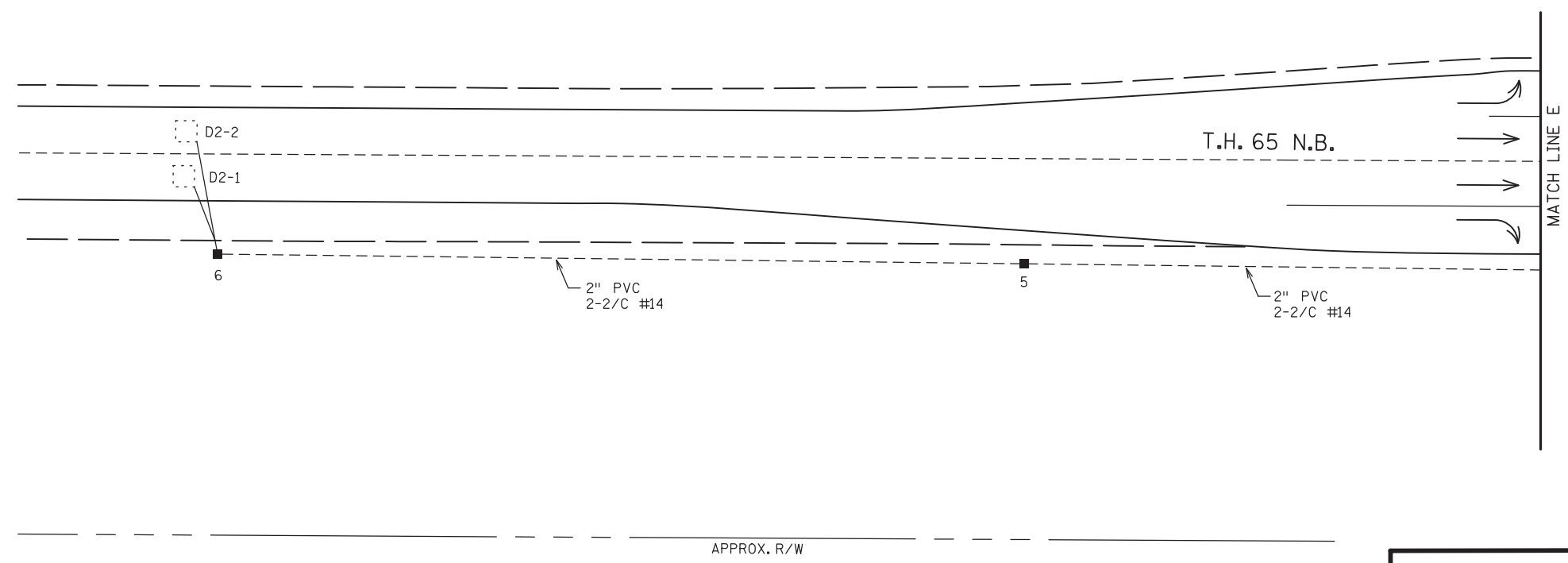
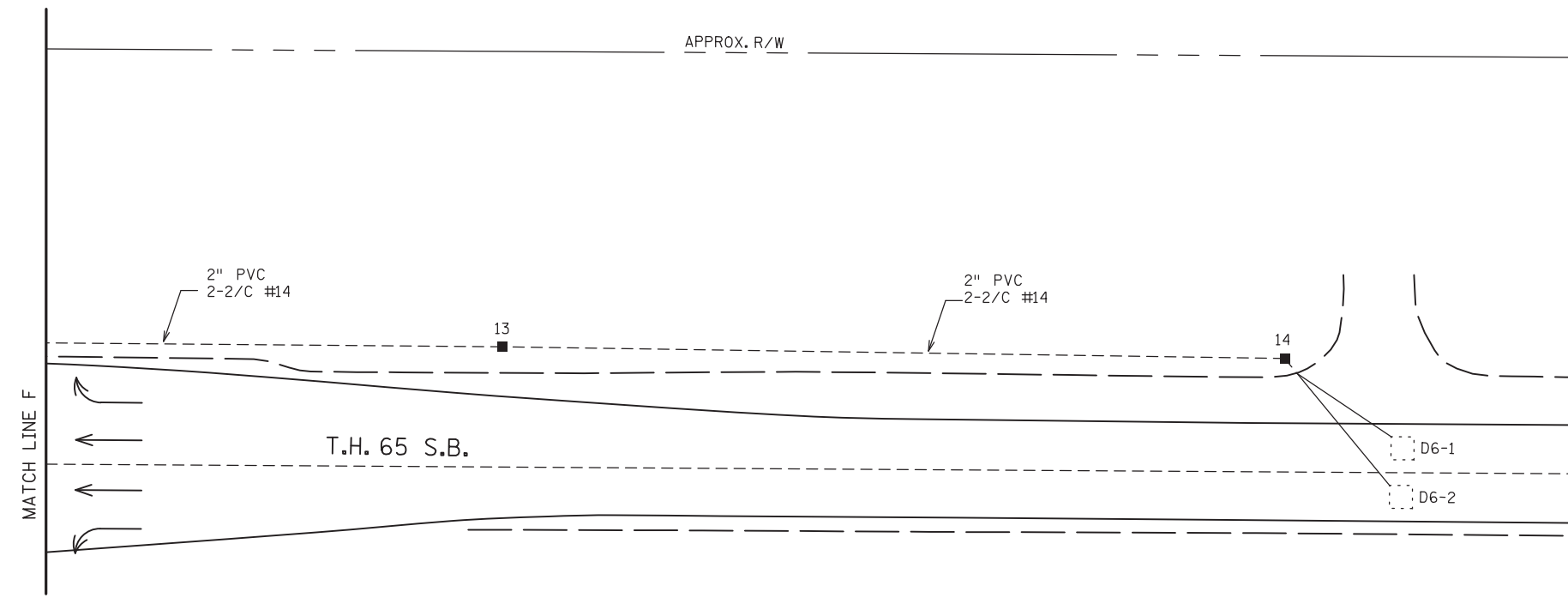
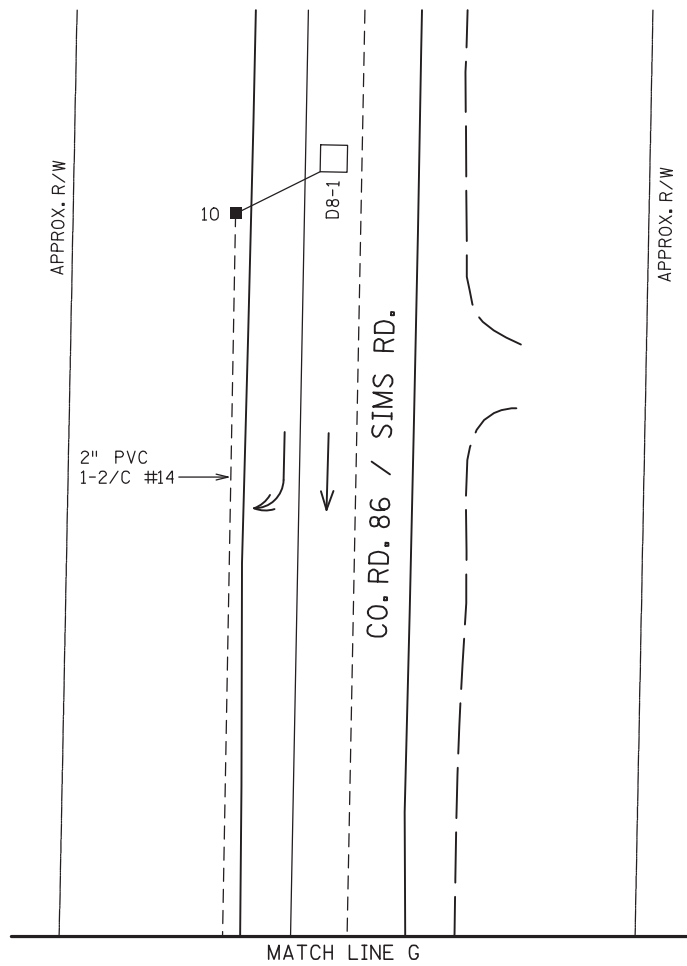
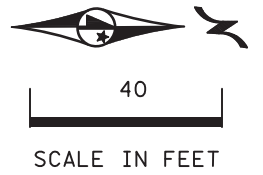
- NOTES:
1. THIS SIGNAL WORK LAYOUT SHEET IS INTENDED AS AN OVERVIEW OF THE SIGNAL WORK REQUIRED. SEE THE INTERSECTION LAYOUT AND WIRING DIAGRAM SHEETS FOR DETAILED SIGNAL REVISION WORK.
  2. THE EXISTING APS PUSH BUTTONS AT THIS INTERSECTION ARE NOT COMPATIBLE WITH NEW APS PUSH BUTTONS REQUIRED FOR THE NEW CROSSING. ALL EXISTING PUSH BUTTONS WILL BE REPLACED WITH NEW PUSH BUTTONS.
  3. NEW APS PUSH BUTTONS REQUIRE 2/C SHIELDED CABLE. WHERE OLD PUSH BUTTONS ARE USING CABLES OTHER THAN 2/C, NEW 2/C CABLE WILL NEED TO BE FURNISHED AND INSTALLED FOR NEW APS BUTTONS. THE EXISTING CABLES BE ABANDONED OR REMOVED.
  4. THE INPLACE SIGNAL MOUNTING IS BRACKETING. WHERE ADDING PED HEADS, THE SIGNAL HEAD BRACKETING SHALL BE MODIFIED TO INCLUDE A PED HEAD (TYPE 10A BECOMES TYPE 10B). IF THERE ISN'T A SIGNAL HEAD HERE A NEW PED HEAD IS REQUIRED, F&I TYPE 30A BRACKETING.
  - 5 ALL ITEMS ARE INPLACE UNLESS NOTED.
  6. PEDESTRIAN CURB RAMPS, CONCRETE WORK, AND STRIPING PLAN ARE INCLUDED IN THE ROADWAY SECTION OF THE PLAN. SEE THE INTERSECTION DETAILS FOR MORE INFORMATION.

BY	DATE	REVISIONS	SYSTEM ID:	T.E. 103237	S.P.002-632-021, S.P.106-020-040, S.P.106-125-009	DRAWN BY: CDB	CKD BY: CDB	DATE: 10/10/23
			METER ADDRESS:		CERTIFIED BY: <i>Gregory Ken</i>	LIC. NO. 26829	DATE: 10/12/23	
			OLD SYSTEM ID:		STATE PROJ. NO. 0208-165 (T.H.65) SHEET NO. SS76 OF SS87 SHEETS			

**SIGNAL WORK LAYOUT**  
**REVISE SIGNAL SYSTEM "S"**  
**TH 65 AT CSAH 86 (SIMS AVE.)**  
**EAST BETHEL, ANOKA COUNTY**

PLOTTED/REVISED: 3-NOV-2023

DISTRICT \*: Metro  
I/PLOT NAME: T22208A\_SGL\_T4  
FILENAME: Projects\DM\_FROSO6500000\Traffic\Signals\27.98\_22208 CSAH (86)\SIMS AVE -213TH 1736136\PE\DRAWING\T22208A\_SGL.DGN



NOTE: THERE IS NOT ANY SIGNAL WORK REQUIRED ON THIS SHEET.

BY	DATE	REVISIONS

SYSTEM ID: 1736136 T.E. 103237  
 METER ADDRESS:  
 OLD SYSTEM ID: 22208

**REVISE SIGNAL SYSTEM "S"  
 MATCH LINE  
 TH 65 AT CSAH 86 (SIMS AVE.)  
 EAST BETHEL, ANOKA COUNTY**

S.P.002-632-021, S.P.106-020-040, S.P.106-125-009  
 DRAWN BY: HRL CKD BY: CDB DATE: 10/10/23  
 CERTIFIED BY *Gregory Ken* LIC. NO. 26829 DATE: 10/12/23  
 STATE PROJ. NO. 0208-165 (T.H.65) SHEET NO. SS79 OF SS87 SHEETS

PLOTTED/REVISED: 3-NOV-2023

DISTRICT \*: Metro  
PLOT NAME: T22208A\_SGL75  
FILENAME: Projects\DM\_FOS\0650000\Traffic\Signals\2798\_22208\_CSAH (86)\SIMS AVE -213TH 1736136\PENDING\T22208A\_SGL.DGN



**SIGNAL REVISION NOTES:**

- THE REVISE SIGNAL SYSTEM WORK CONSISTS OF ADDING THE SOUTH LEG PEDESTRIAN CROSSING, AND REVISING OTHER PUSH BUTTONS TO FIT THE NEW PED RAMPS. WORK INCLUDES REPLACING THE SIGNAL CABINET, RELOCATING (2) MAST ARM SIGNAL POLES, (2) SIGNAL PEDESTAL POLES, APS PUSH BUTTONS, PB STATIONS, PED INDICATIONS, LED LUMINAIRES, AND WIRING.
- ALL ITEMS ARE INPLACE UNLESS OTHERWISE INDICATED.
- LOOP DETECTORS THAT ARE IMPACTED ARE NOT INCLUDED AS PART OF THE "REVISE SIGNAL SYSTEM" PAY ITEM. LOOP DETECTORS ARE PAID FOR SEPARATELY UNDER ITEM "2565 RIGID PVC LOOP DETECTOR " BY THE EACH.
- **→** INDICATES SIGNAL REVISION WORK TO BE COMPLETED.

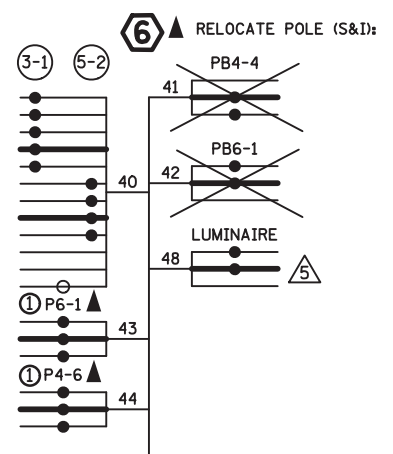
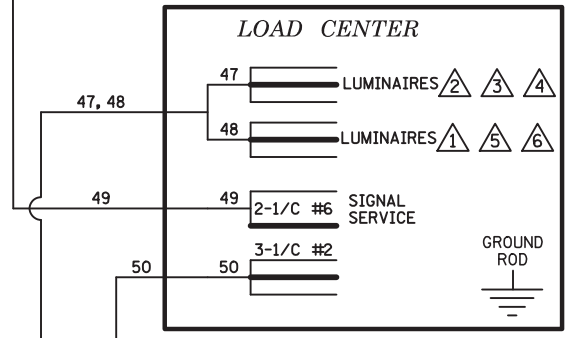
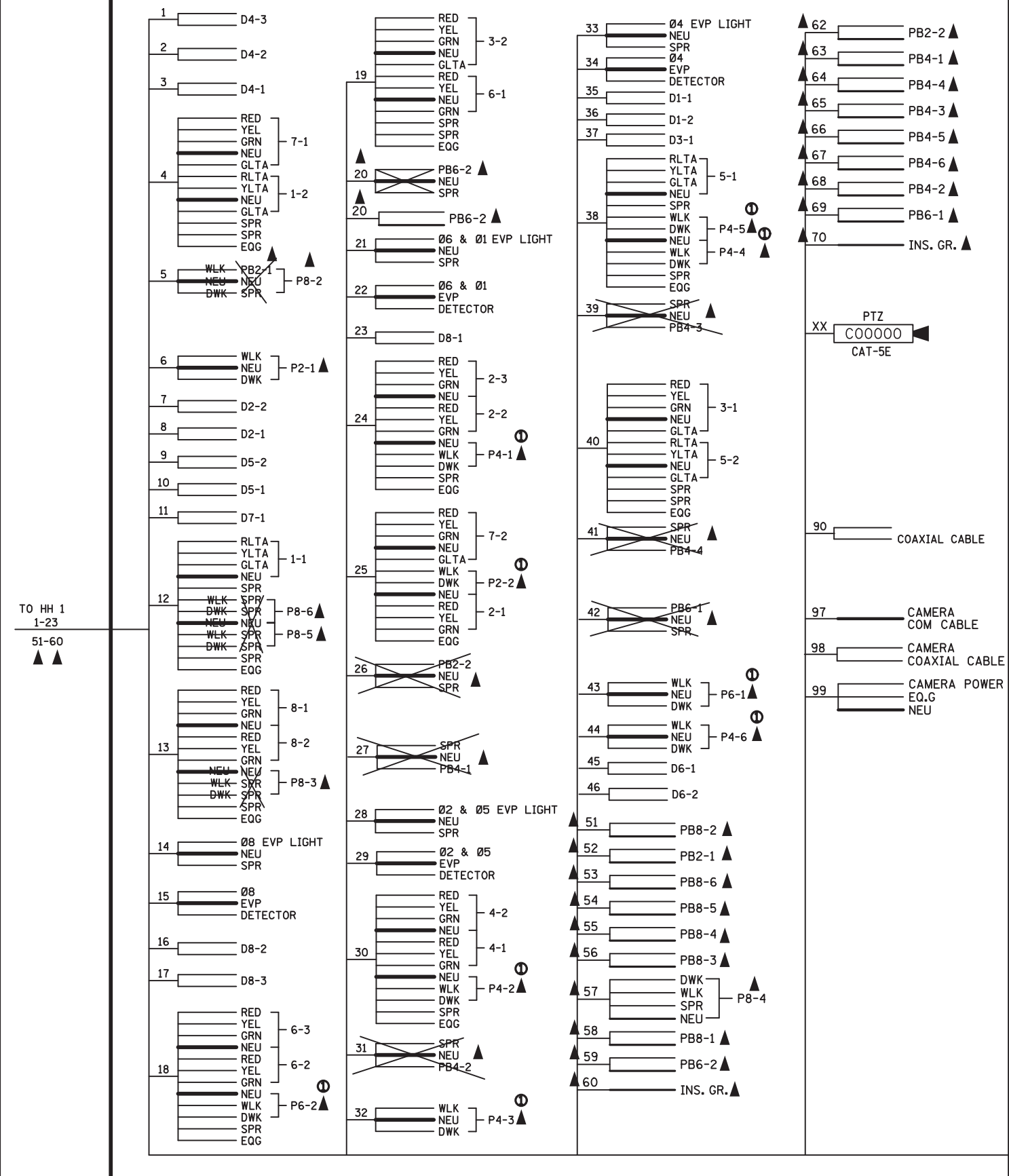
BY	DATE	REVISIONS	SYSTEM ID: 1736136	T.E. 103237	REVISE SIGNAL SYSTEM "S" INTERSECTION NOTES TH 65 AT CSAH 86 (SIMS AVE.) EAST BETHEL, ANOKA COUNTY	S.P. 002-632-021, S.P. 106-020-040, S.P. 106-125-009	DRAWN BY: HRL	CKD BY: CDB	DATE: 10/10/23
			METER ADDRESS:			CERTIFIED BY: <i>Gregory Ken</i>	LIC. NO. 26829	DATE: 10/12/23	
			OLD SYSTEM ID: 22208			STATE PROJ. NO. 0208-165 (T.H.65)	SHEET NO. SS87	OF SS87 SHEETS	

PLOTTED/REVISED: 3-NOV-2023

DISTRICT \*: Metro  
PLOT NAME: T22208A\_SGL76  
FILENAME: Projects\DM\_FOS\06500000\Traffic\Signals\27.98.22208 CSAH (86)\SIMS AVE -213TH 1736136\PENDING\T22208A\_SGL.DGN

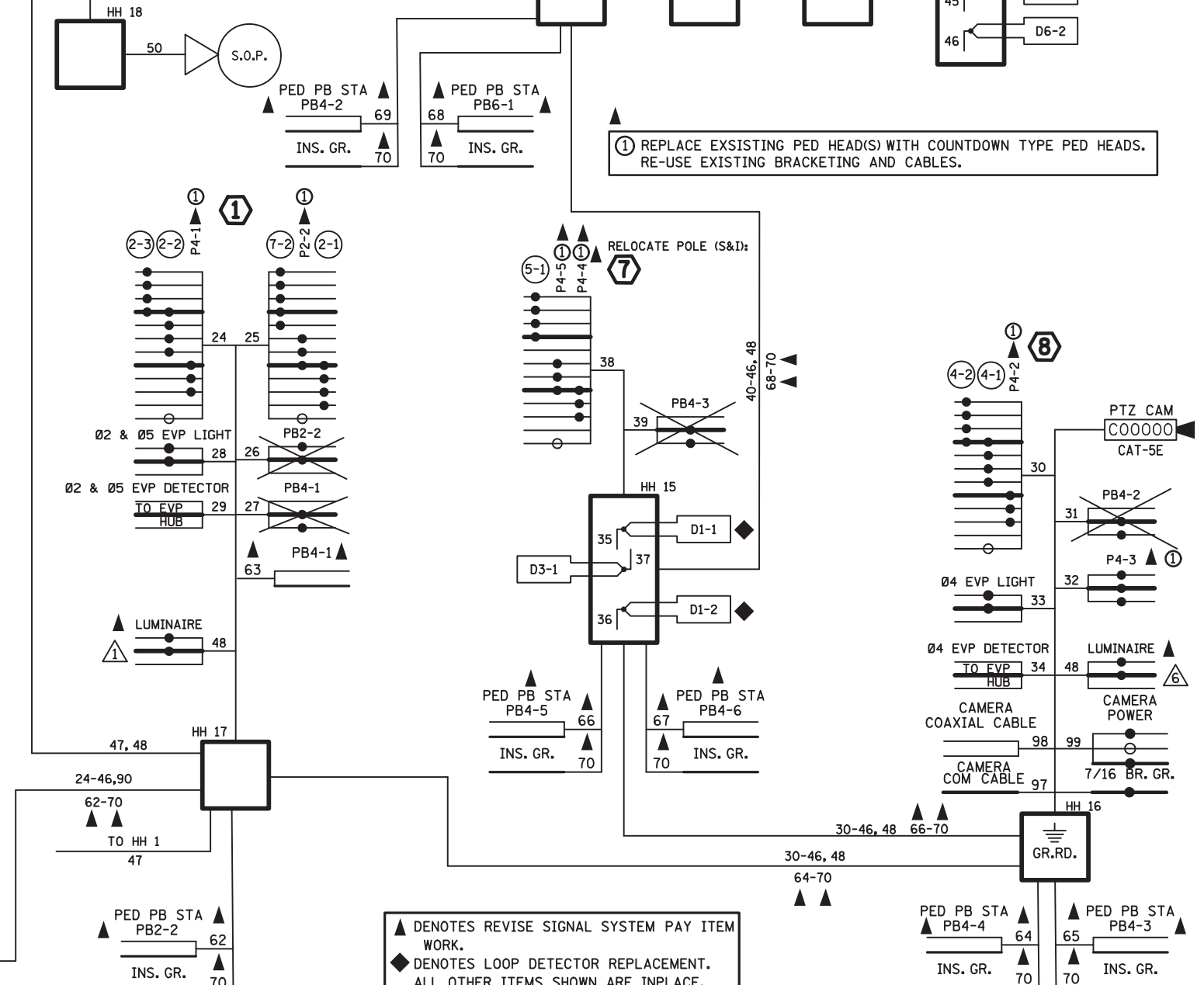
# CONTROLLER CABINET

2-1/C #6 49



CONDUCTOR COLOR CODING	
12/C #12	R O BL WH G
2-1/C #6	R O BLK WH
3/C #14	R O BLK WH
2-1/C #6	R O BLK WH
3/C #14	R O BLK WH
5/C #12	R O BL WH
3/C #12	R O BLK WH
3/C #20	R OR O WH OR YEL BLK OR BL
2/C #14	BLK CLEAR

NOTE: ALL TERMINAL BLOCK CONNECTIONS SHALL BE ARRANGED AS SPECIFIED ABOVE



① REPLACE EXISTING PED HEAD(S) WITH COUNTDOWN TYPE PED HEADS. RE-USE EXISTING BRACKETING AND CABLES.

▲ DENOTES REVISE SIGNAL SYSTEM PAY ITEM WORK.  
◆ DENOTES LOOP DETECTOR REPLACEMENT. ALL OTHER ITEMS SHOWN ARE INPLACE.

BY	DATE	REVISIONS

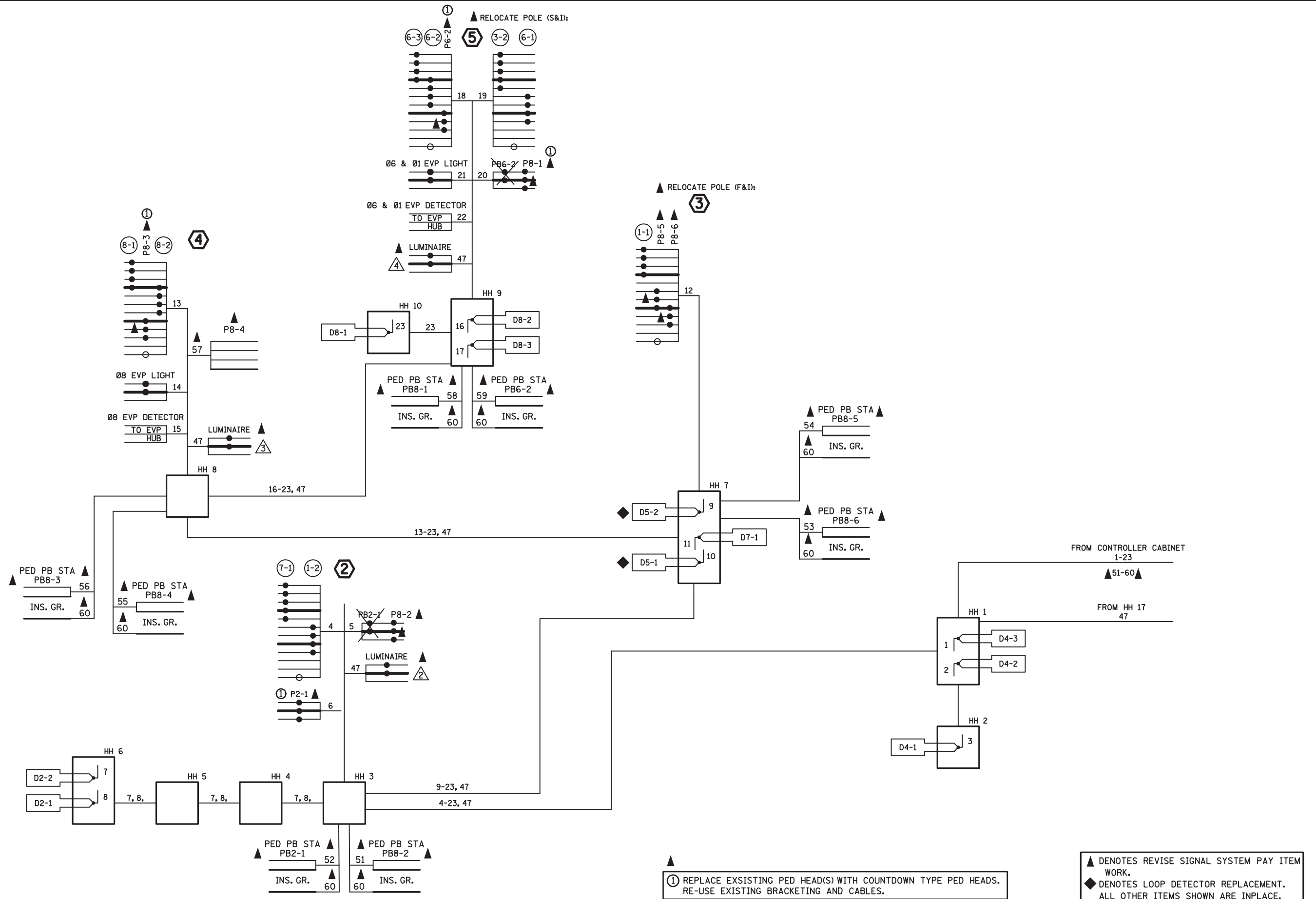
SYSTEM ID: 1736136 T.E. 103237  
 METER ADDRESS:  
 OLD SYSTEM ID: 22208

REVISE SIGNAL SYSTEM "S"  
 FIELD WIRING DIAGRAM 1 OF 2  
 TH 65 AT CSAH 86 (SIMS AVE.)  
 EAST BETHEL, ANOKA COUNTY

S.P.002-632-021, S.P.106-020-040, S.P.106-125-009  
 DRAWN BY: HRL CKD BY: CDB DATE: 10/10/23  
 CERTIFIED BY: *Gregory Ken* LIC. NO. 26829 DATE: 10/12/23  
 STATE PROJ. NO. 0208-165 (T.H.65) SHEET NO. SS81 OF SS87 SHEETS

PLOTTED/REVISED: 3-NOV-2023

DISTRICT \*: Metro  
PLOT NAME: T22208A\_SGL.T7  
FILENAME: Projects\DM\_FOS\06500000\Traffic\Signal\27.98.22208 CSAH (86)\SIMS AVE -213TH 1736136\PEINDING\T22208A\_SGL.DGN

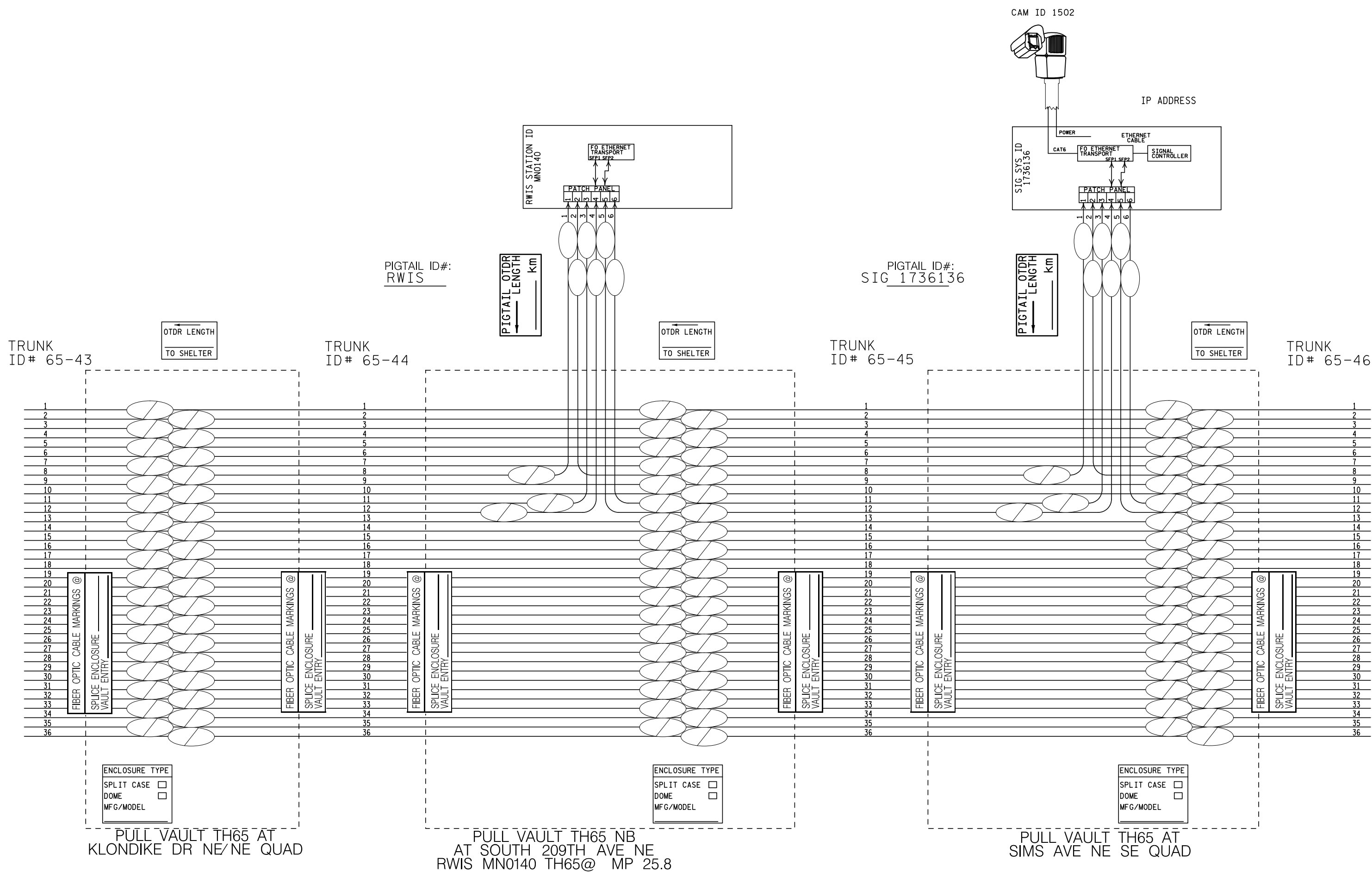


BY	DATE	REVISIONS

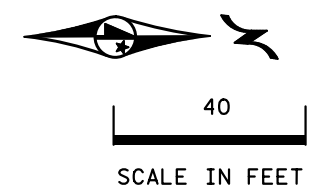
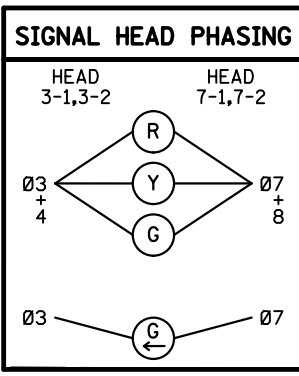
SYSTEM ID: 1736136 T.E. 103237  
 METER ADDRESS:  
 OLD SYSTEM ID: 22208

REVISE SIGNAL SYSTEM "S"  
 FIELD WIRING DIAGRAM 2 OF 2  
 TH 65 AT CSAH 86 (SIMS AVE.)  
 EAST BETHEL, ANOKA COUNTY

S.P.002-632-021, S.P.106-020-040, S.P.106-125-009  
 DRAWN BY:HRL CKD BY:CDB DATE:10/10/23  
 CERTIFIED BY *Gregory Kern* LIC. NO. 26829 DATE: 10/12/23  
 STATE PROJ.NO. 0208-165 (T.H.65) SHEET NO. SS82 OF SS87 SHEETS

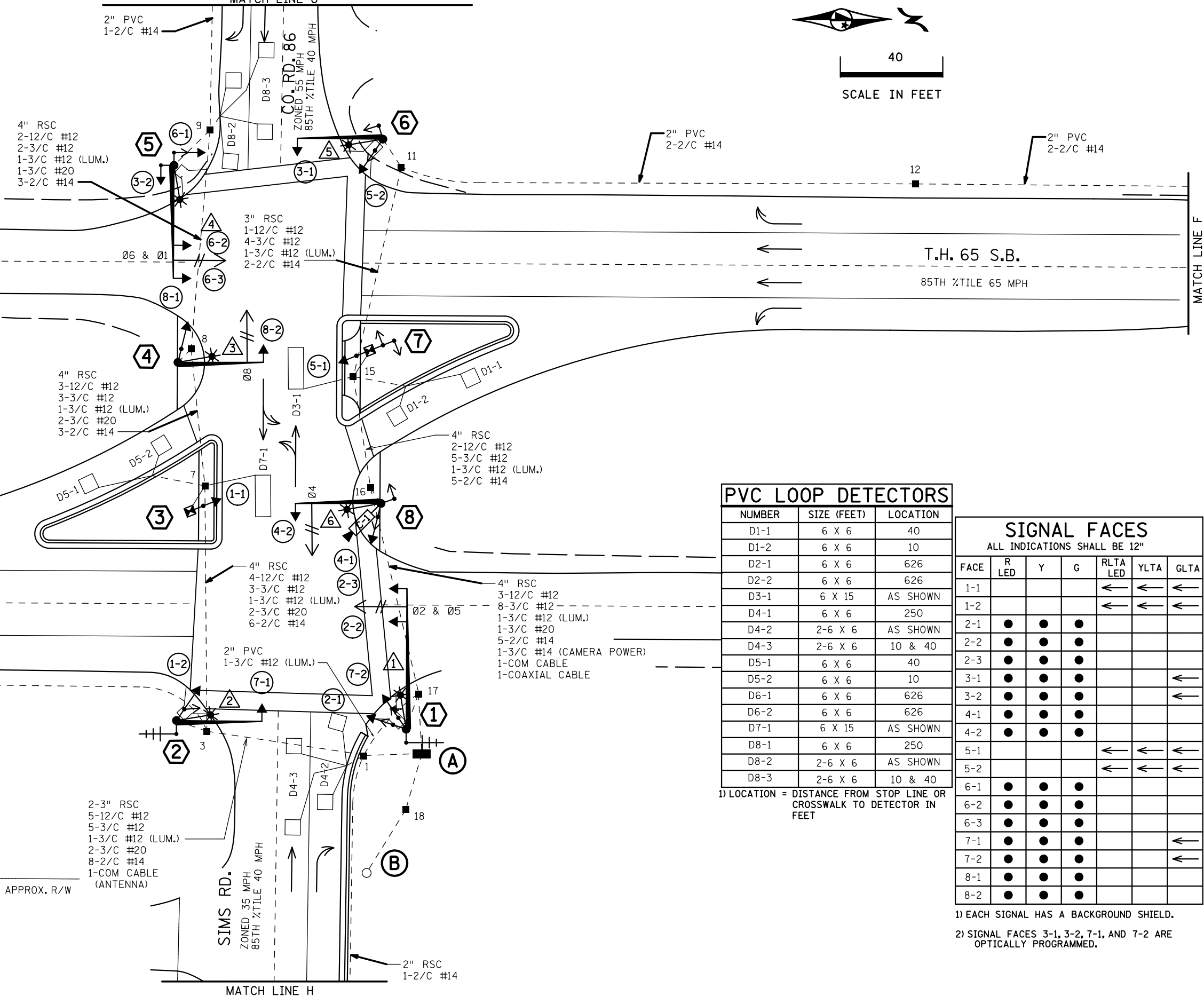
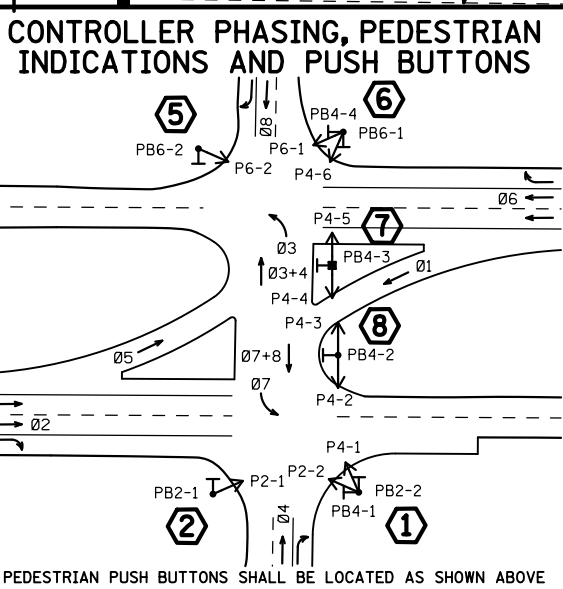


SP 002-632-021, SP 106-020-040, SP 106-125-009



### SIGNAL SYSTEM OPERATION

- THE SIGNAL SYSTEM FLASH MODE IS ALL RED.
- PHASES 1 AND 5 ARE PROTECTED LEFT TURN PHASES.
- PHASES 3 AND 7 ARE INSIDE CLEARANCE PHASES.



### PVC LOOP DETECTORS

NUMBER	SIZE (FEET)	LOCATION
D1-1	6 X 6	40
D1-2	6 X 6	10
D2-1	6 X 6	626
D2-2	6 X 6	626
D3-1	6 X 15	AS SHOWN
D4-1	6 X 6	250
D4-2	2-6 X 6	AS SHOWN
D4-3	2-6 X 6	10 & 40
D5-1	6 X 6	40
D5-2	6 X 6	10
D6-1	6 X 6	626
D6-2	6 X 6	626
D7-1	6 X 15	AS SHOWN
D8-1	6 X 6	250
D8-2	2-6 X 6	AS SHOWN
D8-3	2-6 X 6	10 & 40

1) LOCATION = DISTANCE FROM STOP LINE OR CROSSWALK TO DETECTOR IN FEET

### SIGNAL FACES

ALL INDICATIONS SHALL BE 12"

FACE	R LED	Y	G	RLTA LED	YLTA	GLTA
1-1				←	←	←
1-2				←	←	←
2-1	●	●	●			
2-2	●	●	●			
2-3	●	●	●			
3-1	●	●	●			←
3-2	●	●	●			←
4-1	●	●	●			
4-2	●	●	●			
5-1				←	←	←
5-2				←	←	←
6-1	●	●	●			
6-2	●	●	●			
6-3	●	●	●			
7-1	●	●	●			←
7-2	●	●	●			←
8-1	●	●	●			
8-2	●	●	●			

1) EACH SIGNAL HAS A BACKGROUND SHIELD.  
2) SIGNAL FACES 3-1, 3-2, 7-1, AND 7-2 ARE OPTICALLY PROGRAMMED.

BY	DATE	REVISIONS	SYSTEM ID: 22208	T.E.	S.A.P. NO.	DRAWN BY: BAM	CKD BY: CDB	DATE: 05-23-11
		AS-BUILT PLAN SP 0207-94	METER ADDRESS:		CERTIFIED BY: <i>Michael P. Gelbrach</i>			LIC. NO. 19863 DATE: 05-23-11
			MASTER ID:	T.E.	STATE PROJ. NO. 0207-94 (T.H.65)		SHEET NO. SS80 OF SS88 SHEETS	
			INTERSECTION LAYOUT TH 65 AT CSAH 86 (SIMS AVE.) EAST BETHEL, ANOKA COUNTY					

DISTRICT #: METRO  
 IPLOT NAME: LAYOUT  
 PATH & FILENAME: IP\_PWP-d0781347V22208A\_SGL.DGN  
 PLOTTED/REVISED: 7/30/2013



PLOTTED/REVISED: 7/30/2013

DISTRICT #: METRO  
IPLOT NAME: NOTES  
PATH & FILENAME: IP\_PWP-d0781347\T22208A\_SGL.DGN

① PA100 POLE FOUNDATION  
 TYPE PA100-A-45-D40-9 (DAVIT AT 350)  
 2-SWING AWAY HINGES  
 2-ONE WAY SIGNALS OVERHEAD AT 0' AND 11'  
 2-TYPE 10B POLE MOUNTED AT 0 AND 270  
 ONE WAY EVP DETECTOR AND CONFIRMATORY  
 LIGHT PHASES 2&5  
 LUMINAIRE-200 W HPS  
 RADIO INTERCONNECT ANTENNA  
 2-PED PUSH BUTTONS AND SIGNS (R10-4C)  
 EXTEND INTO HH 17  
 3" RSC  
 2-12/C #12  
 3-3/C #12  
 1-3/C #12 (LUM.)  
 1-3/C #20  
 1-COAXIAL CABLE  
 1-COM CABLE (ANTENNA)

② PA90 POLE FOUNDATION  
 TYPE PA90-A-30-D40-9 (DAVIT AT 350)  
 2-SWING AWAY HINGES  
 ONE WAY SIGNAL OVERHEAD AT 0'  
 TYPE 10B POLE MOUNTED AT 270  
 LUMINAIRE-200 W HPS  
 RADIO INTERCONNECT ANTENNA  
 PED PUSH BUTTON AND SIGN (R10-4C)  
 EXTEND INTO HH 3  
 3" RSC  
 1-12/C #12  
 2-3/C #12  
 1-3/C #12 (LUM.)  
 1-COM CABLE (ANTENNA)

③ PEDESTAL FOUNDATION  
 15' PEDESTAL POLE AND BASE  
 TYPE 5A  
 R9-3a SIGN (NO PED) FACING POLE 2  
 EXTEND INTO HH 7  
 3" RSC  
 1-12/C #12

④ PA90 POLE FOUNDATION  
 TYPE PA90-A-30-D40-9 (DAVIT AT 350)  
 2-SWING AWAY HINGES  
 ONE WAY SIGNAL OVERHEAD AT 0'  
 TYPE 10A POLE MOUNTED AT 270  
 ONE WAY EVP DETECTOR AND CONFIRMATORY  
 LIGHT PHASE 8  
 LUMINAIRE-200 W HPS  
 R9-3a SIGN (NO PED) FACING POLE 5  
 EXTEND INTO HH 8  
 3" RSC  
 1-12/C #12  
 1-3/C #12  
 1-3/C #12 (LUM.)  
 1-3/C #20

⑤ PA100 POLE FOUNDATION  
 TYPE PA100-A-40-D40-9 (DAVIT AT 350)  
 2-SWING AWAY HINGES  
 2-ONE WAY SIGNALS OVERHEAD AT 0' AND 11'  
 TYPE 10A POLE MOUNTED AT 90  
 TYPE 10B POLE MOUNTED AT 180  
 ONE WAY EVP DETECTOR AND CONFIRMATORY  
 LIGHT PHASES 6&1  
 LUMINAIRE-200 W HPS  
 PED PUSH BUTTON AND SIGN (R10-4C)  
 EXTEND INTO HH 9  
 3" RSC  
 2-12/C #12  
 2-3/C #12  
 1-3/C #12 (LUM.)  
 1-3/C #20

⑥ PA90 POLE FOUNDATION  
 TYPE PA90-A-30-D40-9 (DAVIT AT 350)  
 2-SWING AWAY HINGES  
 ONE WAY SIGNAL OVERHEAD AT 0'  
 TYPE 10B POLE MOUNTED AT 270  
 LUMINAIRE-200 W HPS  
 2-PED PUSH BUTTONS AND SIGNS (R10-4C)  
 EXTEND INTO HH 11  
 3" RSC  
 1-12/C #12  
 4-3/C #12  
 1-3/C #12 (LUM.)

⑦ PEDESTAL FOUNDATION  
 15' PEDESTAL POLE AND BASE  
 TYPE 5E  
 PED PUSH BUTTON AND SIGN (R10-4C)  
 EXTEND INTO HH 15  
 3" RSC  
 1-12/C #12  
 1-3/C #12

⑧ PA90 POLE FOUNDATION  
 TYPE PA90-A-30  
 1-X6-350/CAM 400 EXTENSION (MOUNTED AT 350 DEG)  
 (INCLUDES LIGHTNING ROD, 7/16" GROUND BRAID  
 AND GROUND ROD)  
 1-VIDEO CAMER WITH MOUNT  
 2-SWING AWAY HINGES  
 ONE WAY SIGNAL OVERHEAD AT 0'  
 TYPE 10B POLE MOUNTED AT 270  
 TYPE 30A POLE MOUNTED AT 180  
 ONE WAY EVP DETECTOR AND CONFIRMATORY  
 LIGHT PHASE 4  
 LUMINAIRE-200 W HPS  
 PED PUSH BUTTON AND SIGN (R10-4C)  
 EXTEND INTO HH 16  
 3" RSC  
 1-12/C #12  
 3-3/C #12  
 1-3/C #12 (LUM.)  
 1-3/C #20  
 1-7/16" GROUNDING BRAID TO GROUND ROD  
 IN HH 16  
 1-3/C #14 (CAMERA POWER)  
 1-COM CABLE  
 1-COAXIAL CABLE

Ⓐ EQUIPMENT PAD  
 CONTROLLER AND CABINET  
 SERVICE EQUIPMENT (PAD MOUNTED)  
 LOAD CENTER TO CABINET  
 1 1/2" RSC  
 2-1/C #6  
 1-1/C #6 INS. GR.  
 LOAD CENTER TO HH 17  
 2" RSC  
 2-3/C #12 (LUM.)  
 METER TO HH 18  
 2" RSC  
 3-1/C #2

CONTROLLER CABINET TO HH 1  
 2-3" RSC  
 5-12/C #12  
 5-3/C #12  
 2-3/C #20  
 11-2/C #14  
 1-COM CABLE (ANTENNA)

CONTROLLER CABINET TO HH 17  
 2-3" RSC  
 5-12/C #12  
 11-3/C #12  
 2-3/C #20  
 5-2/C #14  
 1-COAXIAL CABLE  
 1-3/C #14 (CAMERA POWER)  
 1-COM CABLE (CAMERA)  
 1-COAXIAL CABLE  
 1-COM CABLE (ANTENNA)

STUB OUT THREAD AND CAP  
 3" RSC

Ⓑ SOP WOOD POLE  
 2" RSC RISER WITH  
 WEATHERHEAD  
 2" RSC TO HH 18  
 WITH 3-1/C #2

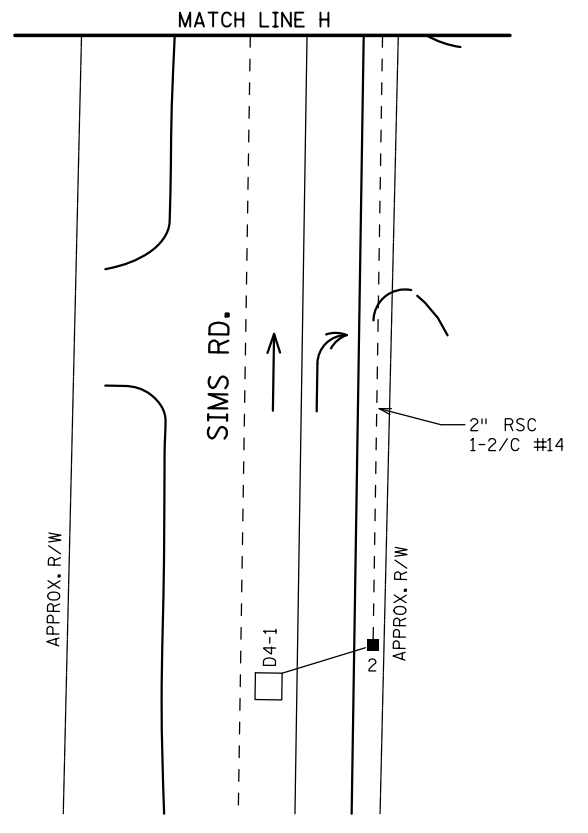
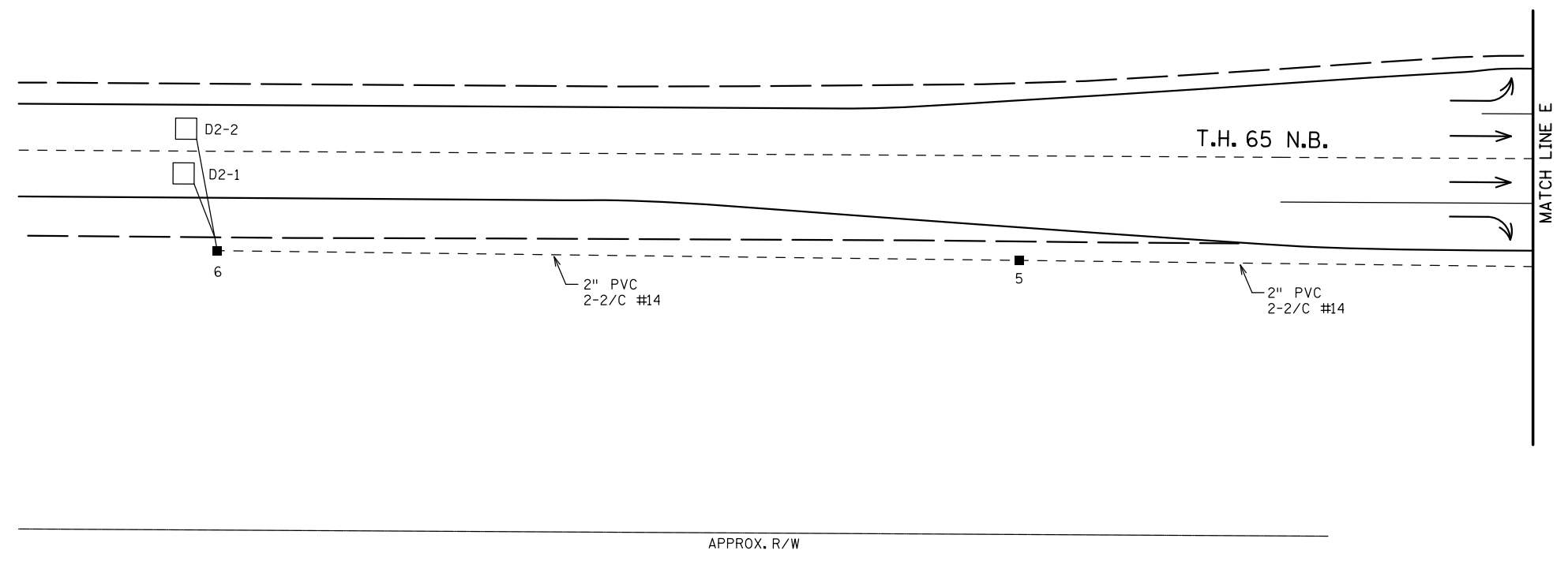
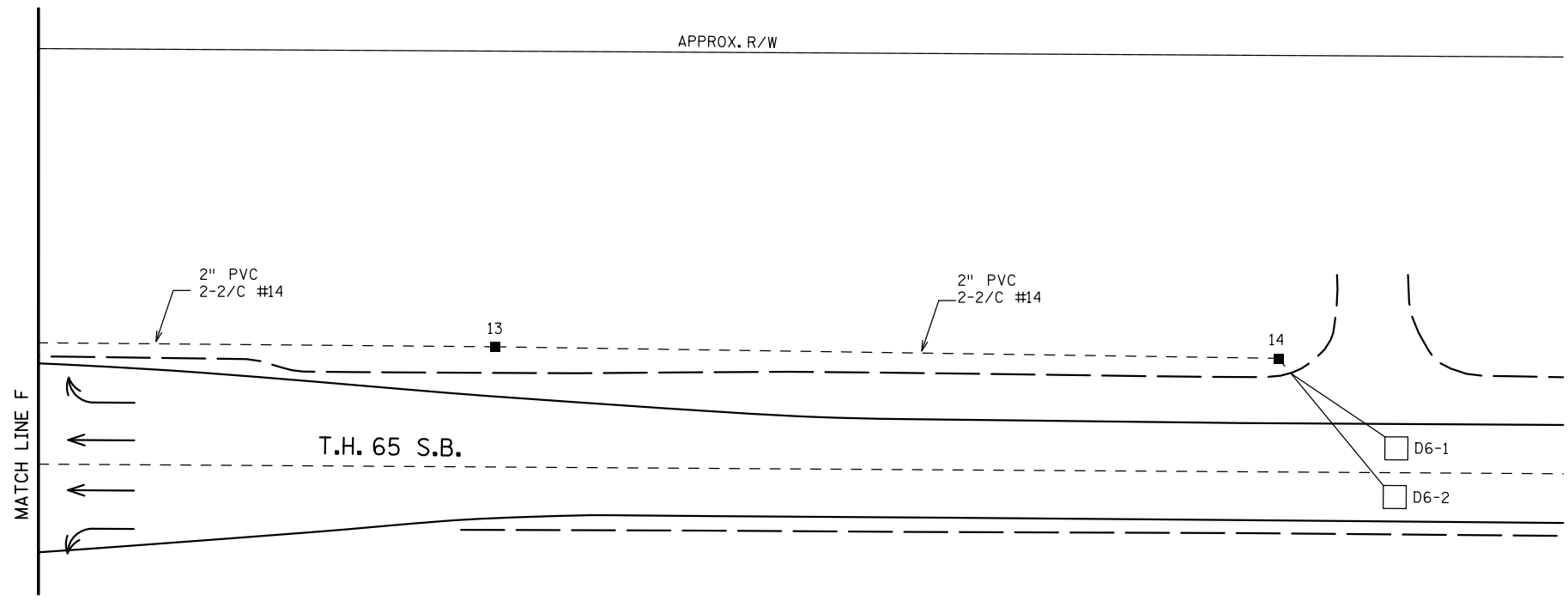
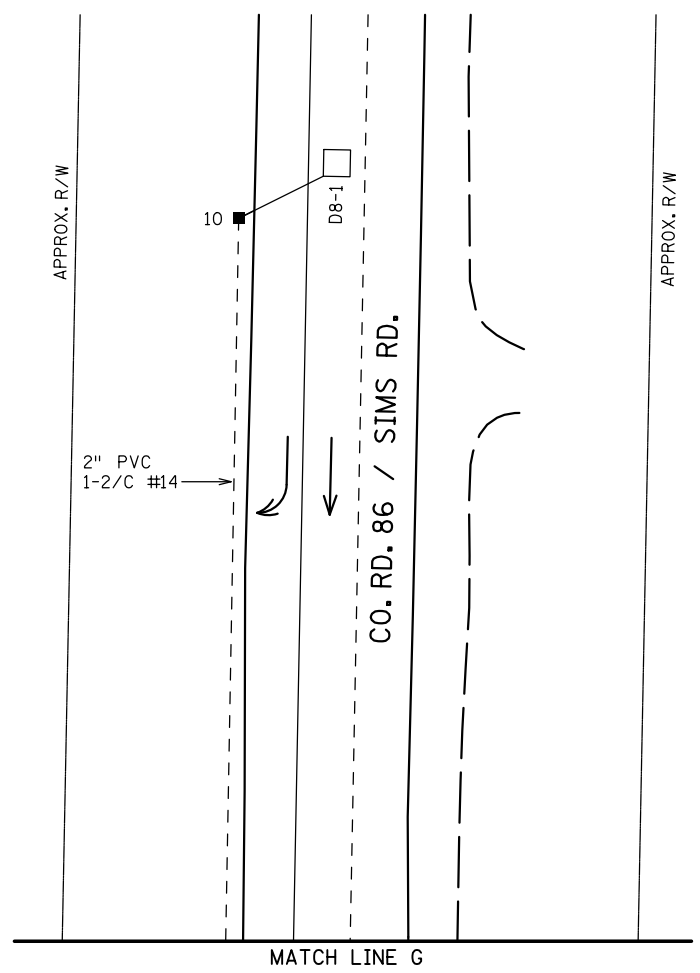
BY	DATE	REVISIONS	SYSTEM ID: 22208	T.E.	<b>INTERSECTION NOTES</b> <b>TH 65 AT CSAH 86 (SIMS AVE.)</b> <b>EAST BETHEL, ANOKA COUNTY</b>	S.A.P. NO.	DRAWN BY: BAM	CKD BY: CDB	DATE: 05-23-11
		AS-BUILT PLAN SP 0207-94	METER ADDRESS:			CERTIFIED BY <i>Michael P. Gubinsky</i>	LIC. NO. 19863	DATE: 05-23-11	
			MASTER ID:	T.E.		STATE PROJ. NO. 0207-94 (T.H.65) SHEET NO. SS82 OF SS88 SHEETS			



40

SCALE IN FEET

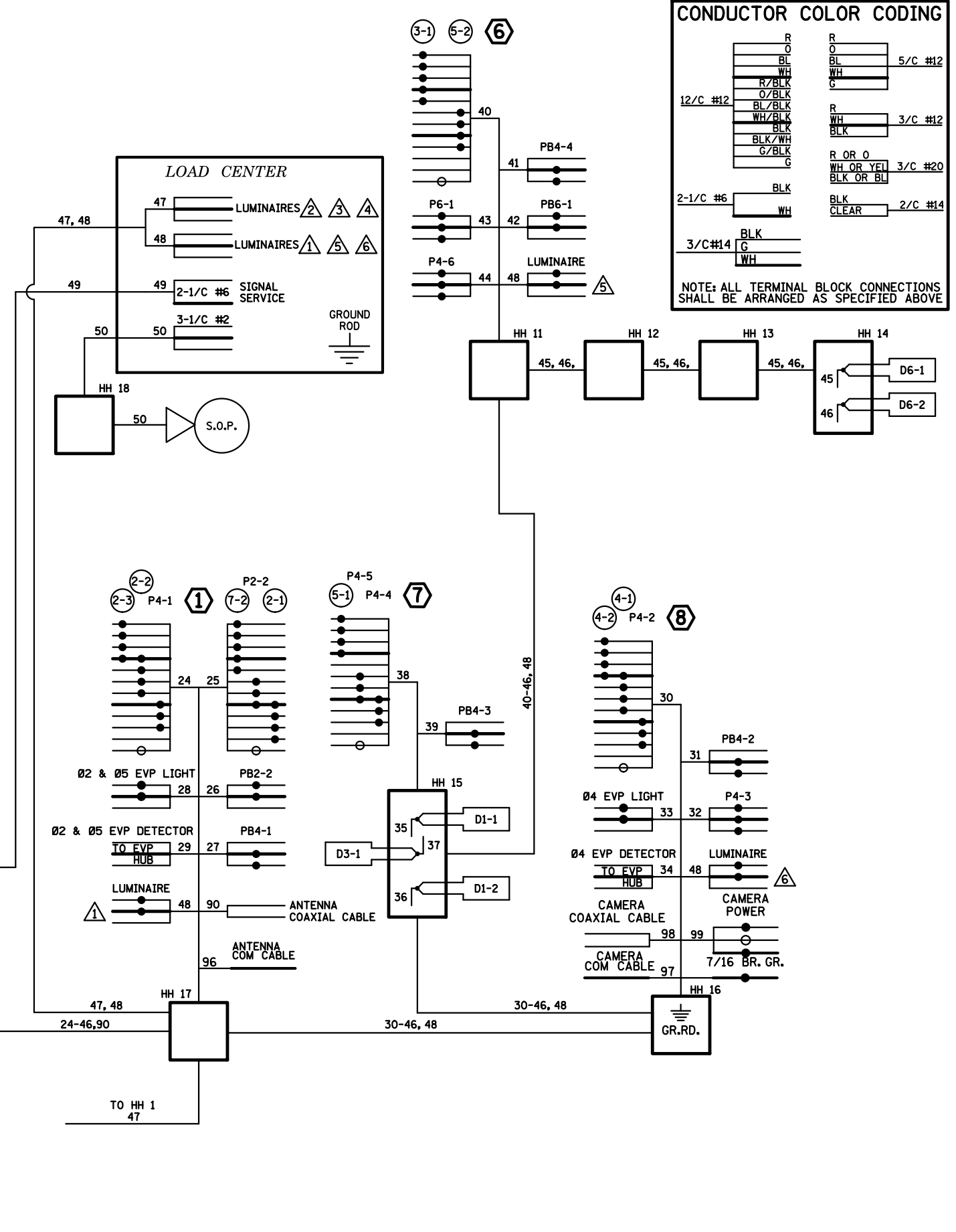
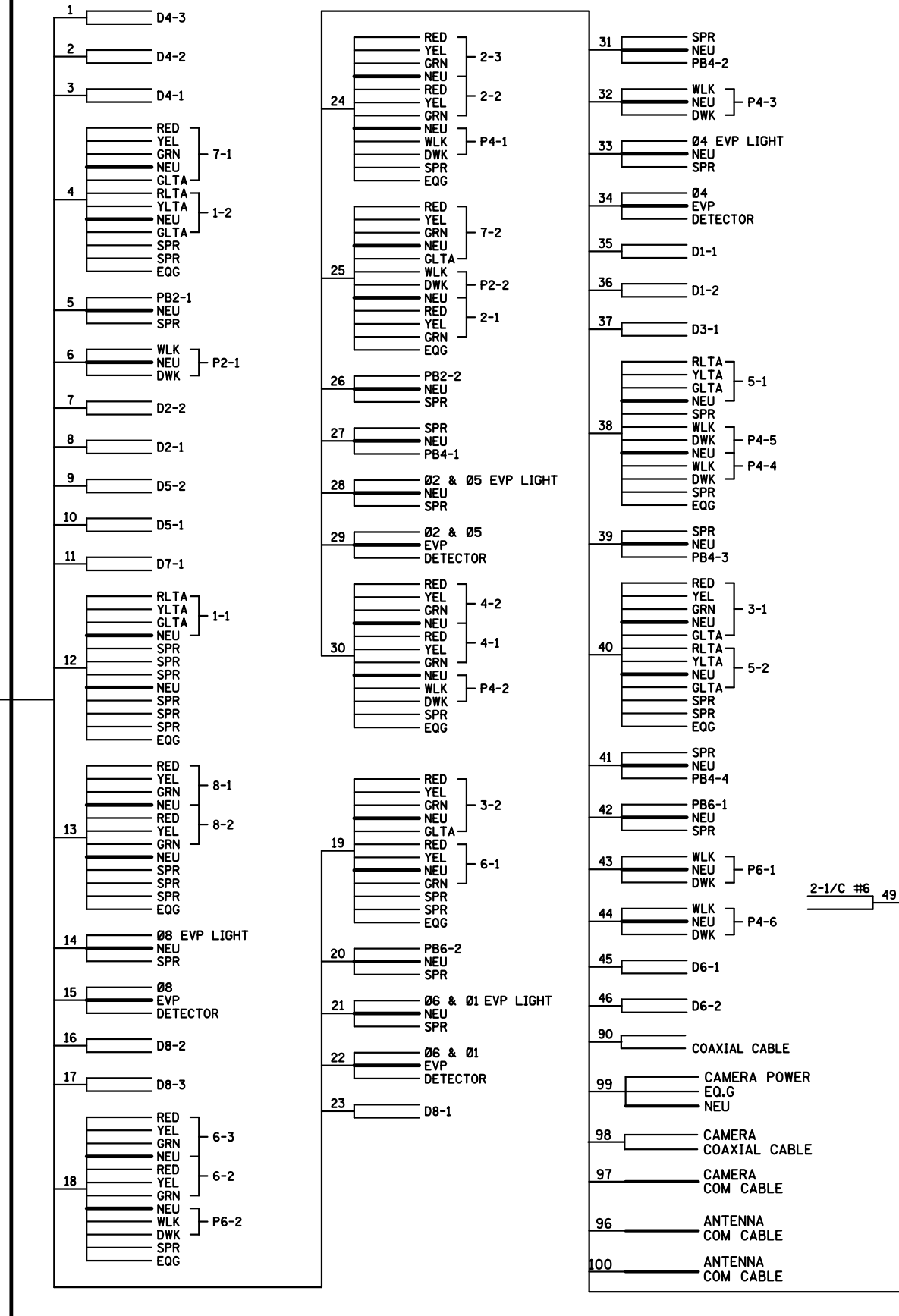
PLOTTED/REVISED: 7/30/2013



DISTRICT #: METRO  
 IPLOT NAME: MATCHLINE  
 PATH & FILENAME: IP\_PWP-d0781347\T22208A\_SGL.DGN

BY	DATE	REVISIONS	SYSTEM ID: 22208	T.E.	<b>MATCH LINE</b> <b>TH 65 AT CSAH 86 (SIMS AVE.)</b> <b>EAST BETHEL, ANOKA COUNTY</b>	STATE PROJ. NO. 0207-94 (T.H.65) SHEET NO. SS81 OF SS88 SHEETS
		AS-BUILT PLAN SP 0207-94	METER ADDRESS:			
			MASTER ID:	T.E.		

# CONTROLLER CABINET



R	R
O	BL
BL	WH
WH	G
5/C #12	
R/BLK	R
O/BLK	WH
BL/BLK	BLK
WH/BLK	3/C #12
BLK	
BLK/WH	R OR O
G/BLK	WH OR YEL
G	BLK OR BL
	3/C #20
	BLK
	WH
	2/C #14
	BLK
	G
	WH

NOTE: ALL TERMINAL BLOCK CONNECTIONS SHALL BE ARRANGED AS SPECIFIED ABOVE

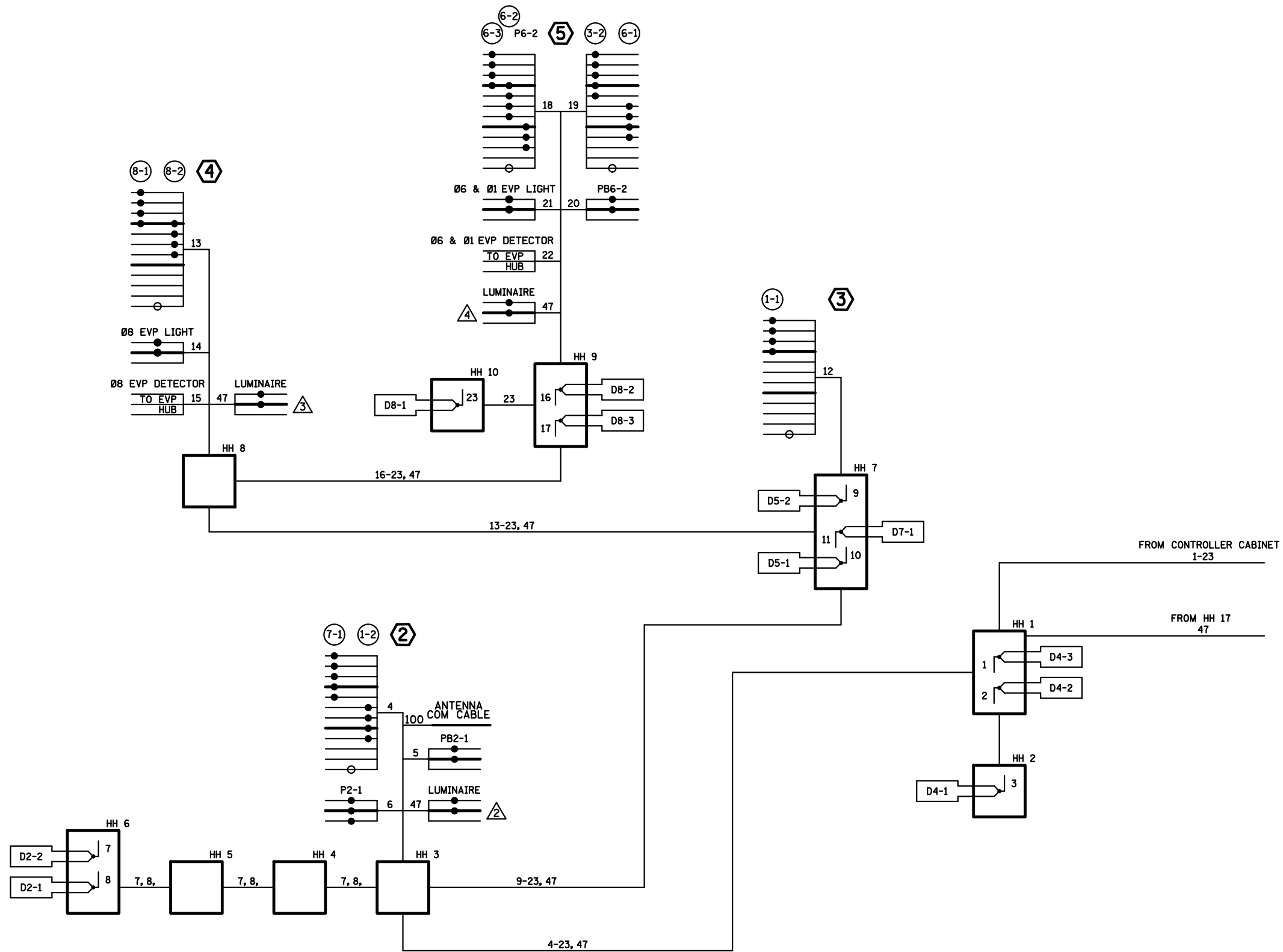
PLOTTED/REVISED: 7/30/2013

DISTRICT #: METRO  
 IPLOT NAME: WIRE I0F 2  
 PATH & FILENAME: IP\_PWP-d0781347\T22208A\_SGL.DGN

BY	DATE	REVISIONS	SYSTEM ID: 22208	T.E.	FIELD WIRING DIAGRAM 1 OF 2 TH 65 AT CSAH 86 (SIMS AVE.) EAST BETHEL, ANOKA COUNTY	S.A.P. NO.	DRAWN BY: BAM	CKD BY: CDB	DATE: 05-23-11
		AS-BUILT PLAN SP 0207-94	METER ADDRESS:			CERTIFIED BY: <i>Michael P. Gubinsky</i> LICENSED PROFESSIONAL ENGINEER	LIC. NO. 19863	DATE: 05-23-11	
			MASTER ID:	T.E.		STATE PROJ. NO. 0207-94 (T.H.65)	SHEET NO. SS83 OF SS88 SHEETS		

PLOTTED/REVISED: 7/30/2013

DISTRICT #: METRO  
 IPLOT NAME: WIRE 2 OF 2  
 PATH & FILENAME: IP\_PWP-d0781347\T22208A\_SGL.DGN



BY	DATE	REVISIONS
		AS-BUILT PLAN SP 0207-94

SYSTEM ID: 22208 T.E.  
 METER ADDRESS:  
 MASTER ID: T.E.

**FIELD WIRING DIAGRAM 2 OF 2**  
**TH 65 AT CSAH 86 (SIMS AVE.)**  
**EAST BETHEL, ANOKA COUNTY**

S.A.P. NO. \_\_\_\_\_ DRAWN BY: BAM CKD BY: CDB DATE: 05-23-11  
 CERTIFIED BY: *Michael P. Gubinsky* LIC. NO. 19863 DATE: 05-23-11  
 LICENSED PROFESSIONAL ENGINEER  
 STATE PROJ. NO. 0207-94 (T.H.65) SHEET NO. SS84 OF SS88 SHEETS