

PVC LOOP DETECTOR CHART

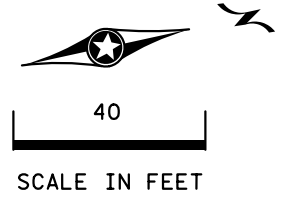
| NUMBER | SIZE (FT) | LOCATION |
|------------------|-----------|----------|
| D1-1, D5-1 | 2-6x6 | 20 & 50 |
| D1-2, D5-2 | 2-6x6 | 5 & 35 |
| D2-1 | 6x6 | 300 |
| D4-1, D4-2 | 6x6 | 120 |
| D4-3, D4-4, D4-5 | 6x6 | 77 |
| D4-6, D4-7 | 6x10 | 4 |
| D4-8 | 6x6 | 6 |
| D6-1 | 6x6 | 300 |
| D8-1, D8-2 | 6x6 | 173 |
| D8-3 | 6x6 | 28 |
| D8-4, D8-5 | 6x10 | 0 |
| D8-6 | 6x6 | -2 |

-LOCATION: DISTANCE FROM CROSSWALK /STOP BAR IN FEET

SIGNAL HEAD CHART

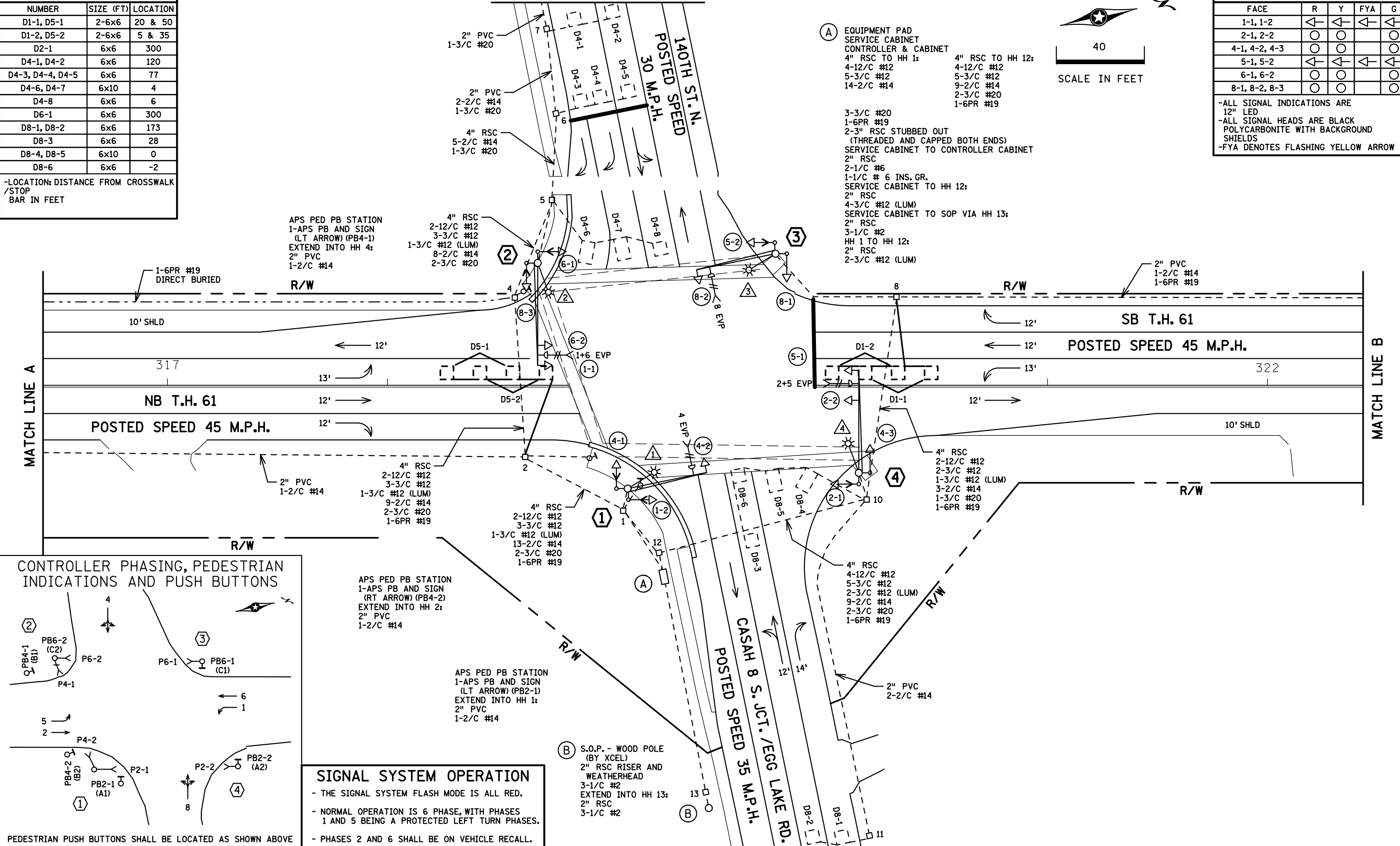
| FACE | R | Y | FYA | G |
|---------------|---|---|-----|---|
| 1-1, 1-2 | ← | ← | ← | ← |
| 2-1, 2-2 | ○ | ○ | | ○ |
| 4-1, 4-2, 4-3 | ○ | ○ | | ○ |
| 5-1, 5-2 | ← | ← | ← | ← |
| 6-1, 6-2 | ○ | ○ | | ○ |
| 8-1, 8-2, 8-3 | ○ | ○ | | ○ |

-ALL SIGNAL INDICATIONS ARE 12" LED
 -ALL SIGNAL HEADS ARE BLACK POLYCARBONITE WITH BACKGROUND SHIELDS
 -FYA DENOTES FLASHING YELLOW ARROW

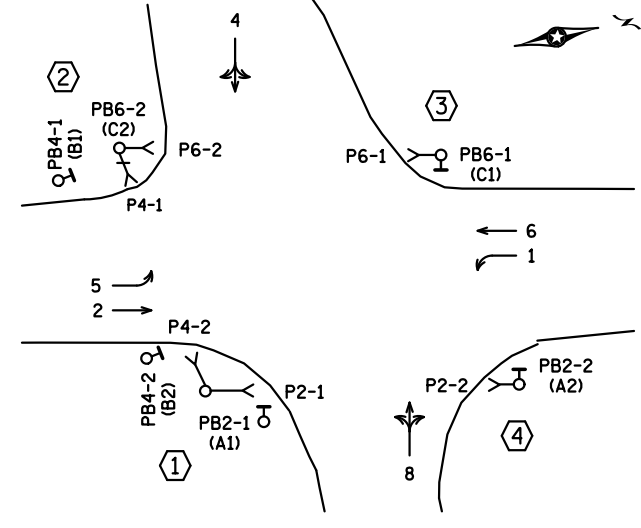


PLOTTED/REVISED: 11/13/2015

DISTRICT #: METRO
 IPLOT NAME: T22565FYAL
 PATH & FILENAME: IP_PWP-d079849YT22565FYAL.dgn



CONTROLLER PHASING, PEDESTRIAN INDICATIONS AND PUSH BUTTONS



SIGNAL SYSTEM OPERATION

- THE SIGNAL SYSTEM FLASH MODE IS ALL RED.
- NORMAL OPERATION IS 6 PHASE, WITH PHASES 1 AND 5 BEING A PROTECTED LEFT TURN PHASES.
- PHASES 2 AND 6 SHALL BE ON VEHICLE RECALL.

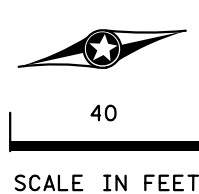
| BY | DATE | REVISIONS | SYSTEM ID: 22565 | T.E. | S.A.P. NO. | DRAWN BY: SJK | CKD BY: EJA | DATE: 06-14-12 |
|-----|----------|---|-----------------------------------|------|---------------------------------|---------------|--------------------------------|----------------|
| EJA | 3-8-13 | AS-BUILT OF SP 6222-165 (APS) & TE 5606 (FYA) | METER ADDRESS: 13999 FOREST BLVD. | | | | | |
| EJA | 11-13-15 | PLAN UPDATES | MASTER ID: | T.E. | STATE PROJ. NO. (T.H.61) | | SHEET NO. 1 OF 3 SHEETS | |

**INTERSECTION LAYOUT
 TH 61 AT CSAH 8 S JCT. (140TH ST N)
 / EGG LAKE RD IN HUGO, WASHINGTON COUNTY**

PLOTTED/REVISED: 11/13/2015

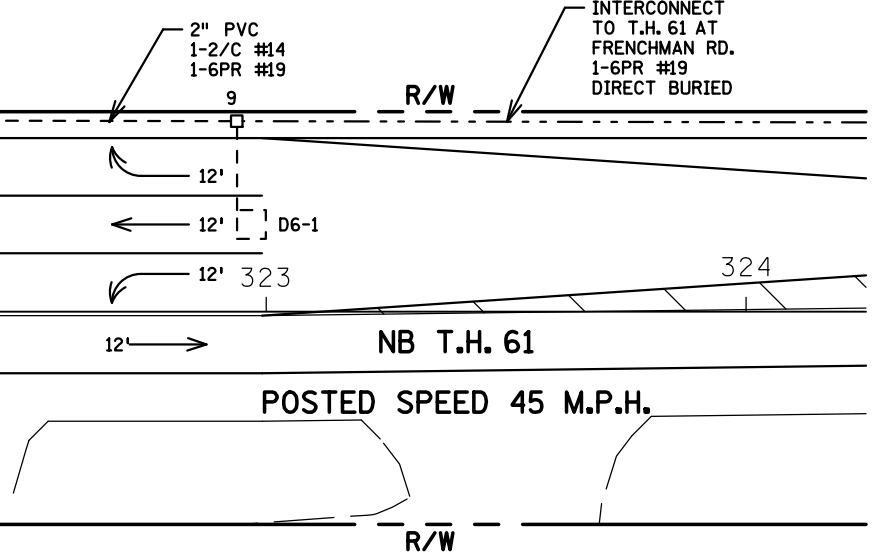
DISTRICT #: METRO
PLOT NAME: T22565FYAW
PATH & FILENAME: IP_PWP-d0779849YT22565FYAW.dgn

MATCH LINE Y - SEE BELOW RIGHT



- ② PA100 POLE FOUNDATION
TYPE PA100-A-45-D40-9 (DAVIT AT 350 DEG)
LUMINAIRE-250W HPS
2-ONE-WAY SIGNALS AT 0' AND 11'
1-ONE WAY EVP DETECTOR AND CONFIRMATORY LIGHT (PHASES 1+6) AT 6'
2-TYPE 10B AT 90 AND 180 DEG
2-CD PED HEADS AT 90 AND 180 DEG
1-APS PB AND SIGN (RT ARROW) (PB6-2)
2-TYPE D SIGNS
EXTEND INTO HH 5:
3" RSC
2-12/C #12
3-3/C #12
1-3/C #12 (LUM)
1-3/C #20

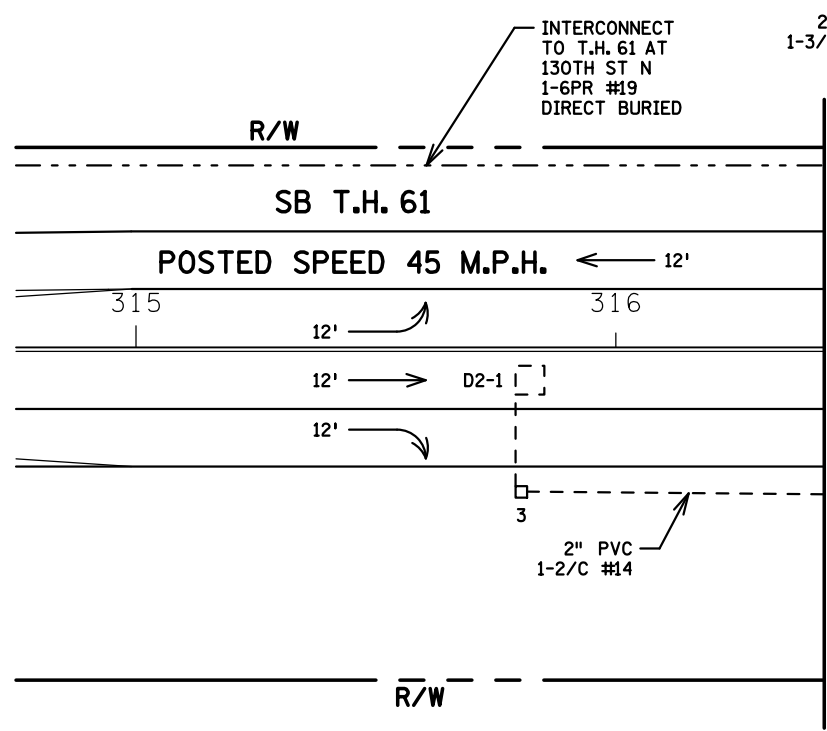
- ① PA90 POLE FOUNDATION
TYPE PA90-A-35-D40-9 (DAVIT AT 350 DEG)
LUMINAIRE-250W HPS
1-ONE WAY SIGNAL AT 0'
1-ONE WAY EVP DETECTOR AND CONFIRMATORY LIGHT (PHASE 4) AT 6'
2-TYPE 10B AT 90 AND 180 DEG
2-CD PED HEADS AT 90 AND 180 DEG
1-TYPE D SIGN
EXTEND INTO HH 1:
3" RSC
2-12/C #12
2-3/C #12
1-3/C #12 (LUM)
1-3/C #20



- ⑤ PEDESTAL FOUNDATION
8' PEDESTAL POLE PLUS BASE
1-ONE WAY EVP DETECTOR AND MOUNTING BRACKET ASSEMBLY- MOUNT ON TOP OF PEDESTAL (PHASE 4)
EXTEND INTO HH 53:
2" RSC
1-3/C #20

- ③ PA90 POLE FOUNDATION
TYPE PA90-A-35-D40-9 (DAVIT AT 350 DEG)
LUMINAIRE-250W HPS
1-ONE WAY SIGNAL AT 0'
1-ONE WAY EVP DETECTOR AND CONFIRMATORY LIGHT (PHASE 8) AT 6'
1-TYPE 10A AT 180 DEG
1-TYPE 10B AT 90 DEG
1-CD PED HEAD AT 90 DEG
1-R9-3 SIGN (FACING POLE 4)
1-APS PB AND SIGN (LT ARROW) (PB6-1)
1-TYPE D SIGN
EXTEND INTO HH 8:
3" RSC
2-12/C #12
2-3/C #12
1-3/C #12 (LUM)
1-3/C #20

- ④ PA100 POLE FOUNDATION
TYPE PA100-A-45-D40-9 (DAVIT AT 350 DEG)
2-ONE-WAY SIGNALS AT 0' AND 11'
LUMINAIRE-250W HPS
1-ONE WAY EVP DETECTOR AND CONFIRMATORY LIGHT (PHASES 2+5) AT 6'
1-TYPE 10A AT 90 DEG
1-TYPE 10B AT 180 DEG
1-CD PED HEAD AT 180 DEG
1-R9-3 SIGN (FACING POLE 3)
1-APS PB AND SIGN (RT ARROW) (PB2-2)
2-TYPE D SIGN (D-5+6)
EXTEND INTO HH 10:
3" RSC
2-12/C #12
3-3/C #12
1-3/C #12 (LUM)
1-3/C #20



140TH ST. N.
POSTED SPEED 30 M.P.H.

FIRE STATION DRIVEWAY

140TH ST. N.
POSTED SPEED 30 M.P.H.

FINALE AVE N.

MATCH LINE X

MATCH LINE Y - SEE ABOVE LEFT

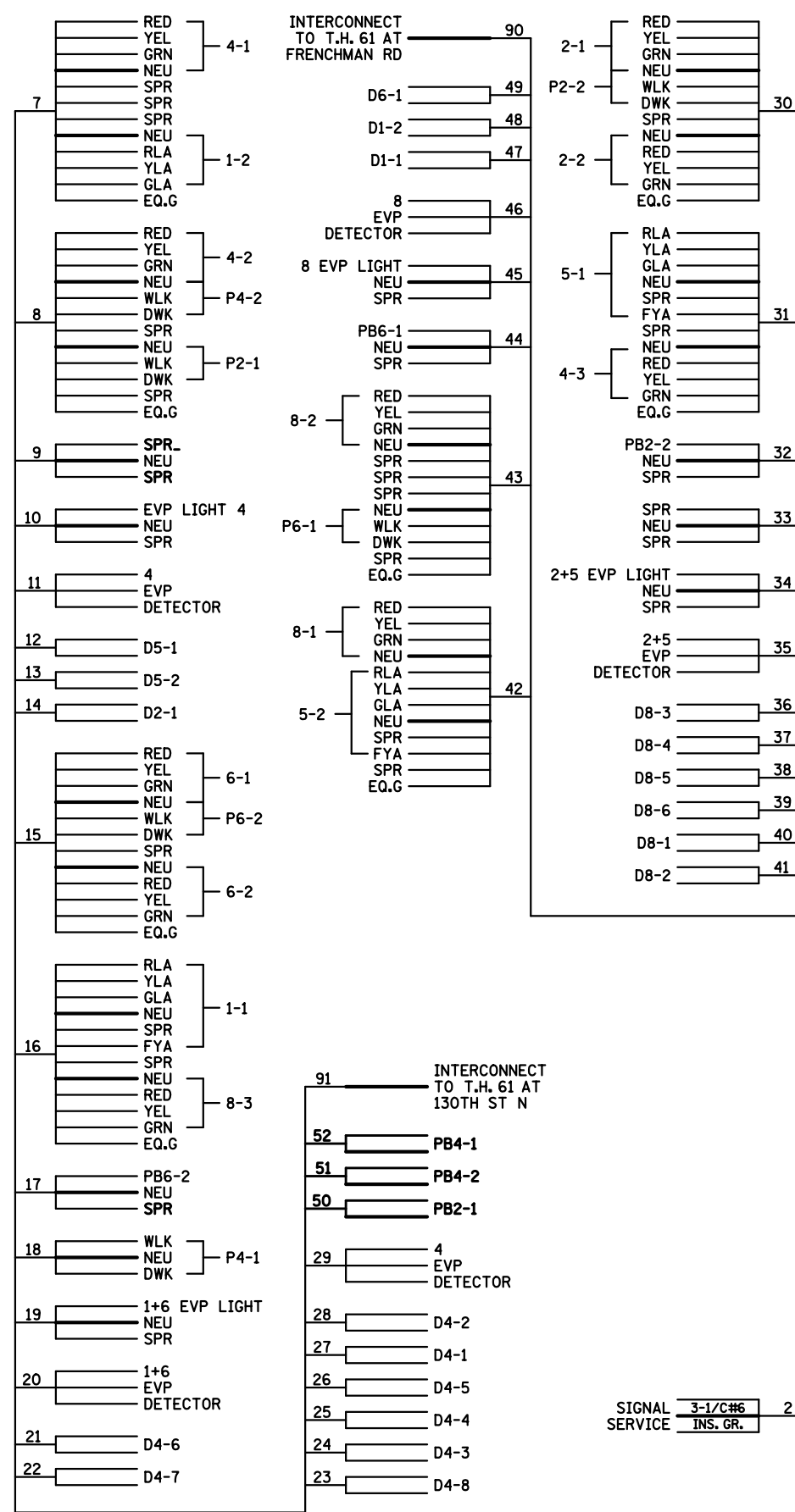
| | | | | | | | | |
|-----|----------|--|--|------|--------------------------------|---------------|-------------------------|----------------|
| BY | DATE | REVISIONS | SYSTEM ID: 22565 | T.E. | S.A.P. NO. | DRAWN BY: GDS | CKD BY: EJA | DATE: 02-01-12 |
| EJA | 03-08-13 | AS-BUILT OF 6222-165 (APS) & TE 5606 (FYA) | METER ADDRESS: 13999 FOREST BLVD. | | CERTIFIED BY | LIC. NO. | | DATE: |
| EJA | 11-13-15 | PLAN UPDATES | MASTER ID: | T.E. | LICENSED PROFESSIONAL ENGINEER | | | |
| | | | MATCH LINE LAYOUTS AND NOTES TH 61 AT CSAH 8 S. JCT (140TH ST N) /EGG LAKE RD IN HUGO, WASHINGTON COUNTY | | STATE PROJ. NO. (T.H.61) | | SHEET NO. 2 OF 3 SHEETS | |

CONDUCTOR COLOR CODING

| | |
|--------|-----------|
| R | OR O |
| O | WH OR YEL |
| BL | BLK OR BL |
| WH | |
| R/BLK | R |
| O/BLK | WH |
| BL/BLK | BLK |
| WH/BLK | |
| BLK | BLK |
| BLK/WH | WH |
| G/BLK | |
| G | |
| 6PR#19 | 2/C#14 |
| | BLK |
| | CLR |

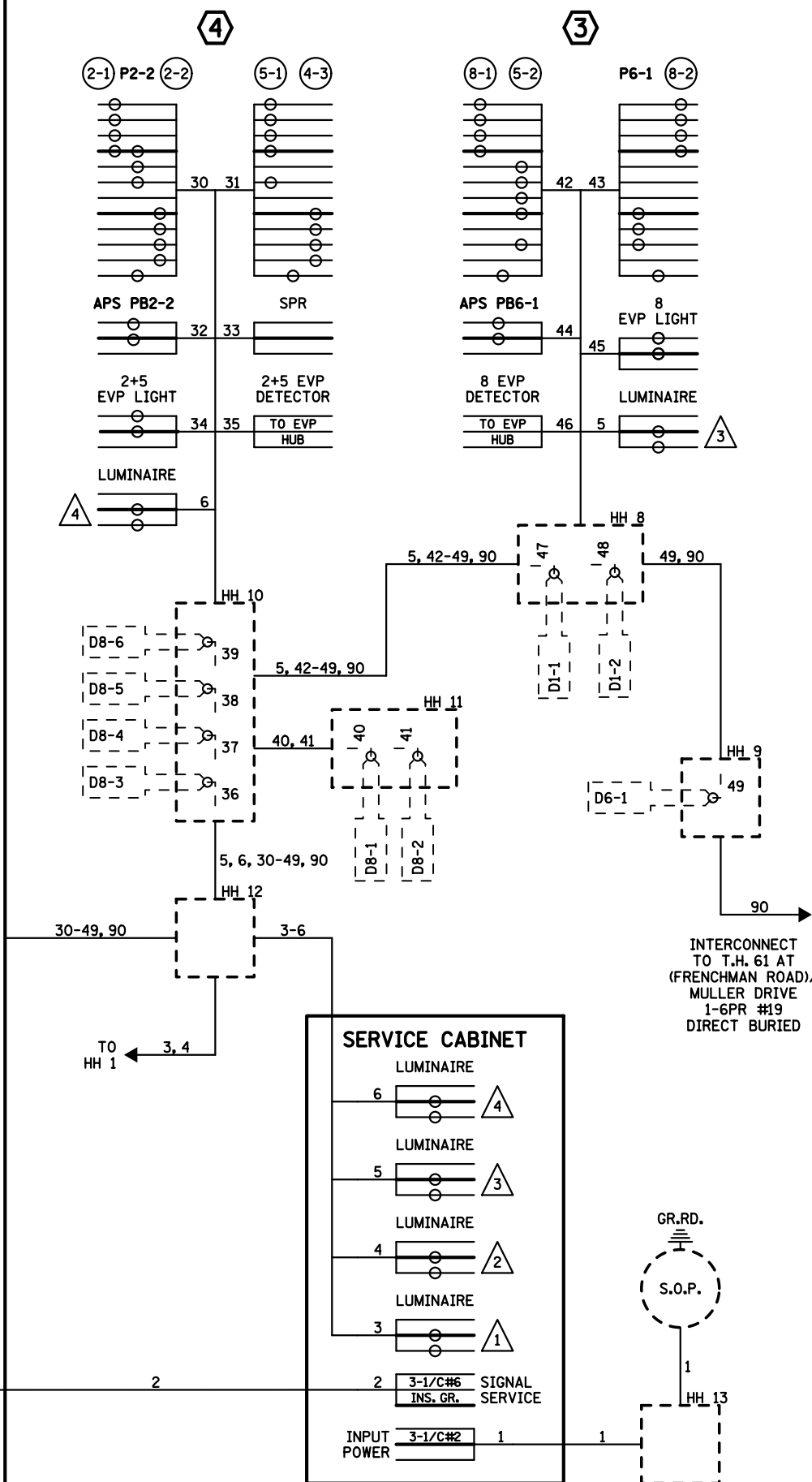
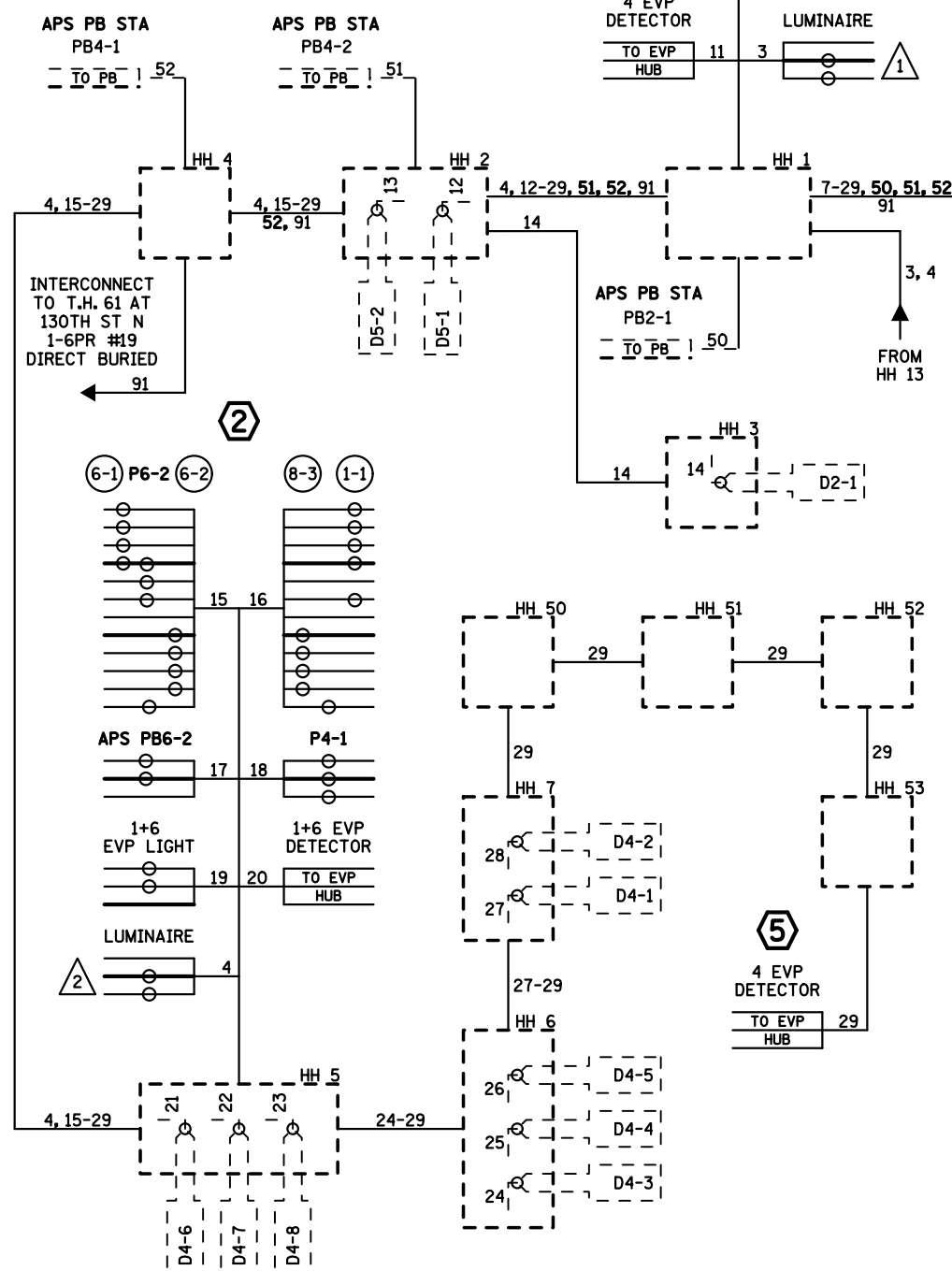
NOTE: ALL TERMINAL BLOCK CONNECTIONS SHALL BE ARRANGED AS SPECIFIED ABOVE

CONTROLLER CABINET



PLOTTED/REVISED: 11/13/2015

DISTRICT #: METRO
PLOT NAME: T22565FYAW
PATH & FILENAME: IP_PWP-d079849YT22565FYAW.dgn



| | | | | | | | | | | |
|---------|---------------|--|-----------------------------------|------|--|--------------------------|-------------------------|-------------|----------------|--|
| BY: EJA | DATE: 03-8-12 | AS-BUILT OF SP 6222-165(APS) & TE 5606 (FYA) | SYSTEM ID: 22565 | T.E. | <p align="center">FIELD WIRING DIAGRAM TH 61 AT CSAH 8 S JCT (140TH ST N) /EGG LAKE RD IN HUGO, WASHINGTON COUNTY</p> | S.A.P. NO. | DRAWN BY: GDS | CKD BY: EJA | DATE: 02-01-12 | |
| EJA | 11-13-15 | PLAN UPDATES | METER ADDRESS: 13999 FOREST BLVD. | T.E. | | CERTIFIED BY: _____ | LIC. NO. _____ | DATE: _____ | | |
| | | | MASTER ID: | | | STATE PROJ. NO. (T.H.61) | SHEET NO. 3 OF 3 SHEETS | | | |