

PLOTTED/REVISED: 10/30/2015

LOOP DETECTORS		
NUMBER	SIZE (FT.)	LOCATION
** D1-1	6x6	40'
** D1-2	6x6	40'
** D1-3	6x6	10'
** D1-4	6x6	10'
** D2-1	6x6	400'
** D2-2	6x6	400'
D3-1	6x6	40'
D3-2	6x6	40'
D3-3	6x6	10'
D3-4	6x6	10'
D4-1	6x6	250'
D4-2	6x6	250'
D4-3	2-6x6	5' & 20'
D4-4	2-6x6	5' & 20'
D4-5	2-6x6	5' & 20'
** D5-1	6x6	40'
** D5-2	6x6	10'
** D6-1	6x6	400'
** D6-2	6x6	400'
D7-1	6x6	40'
D7-2	6x6	10'
D8-1	6x6	250'
D8-2	2-6x6	5' & 20'
D8-3	2-6x6	5' & 20'

LOCATION = DISTANCE FROM CROSSWALK OR STOP BAR TO FRONT OF LOOP DETECTOR.

** = SAWCUT LOOP DETECTOR (ALL)

NOTE: 1-4" R.S.C. BETWEEN H.H.15-19 DOES NOT PASS THROUGH H.H.18.

WOOD POLE (S.O.P.) (XCEL ENERGY)
2" R.S.C. RISER AND WEATHERHEAD
3-1/c#2
EXTEND INTO H.H.20:
2" R.S.C.
3-1/c#2

PED PB STATION
1-APS PB AND SIGN (RT ARROW) (PB6-2)
EXTEND INTO HH 19:
1 1/4" PVC
1-2/C#14

4" R.S.C.
2-12/c#12
3-3/c#12
1-3/c#20
2-2/c#12
2-2/c#14
1-3/c#12 (LUM)

2" PVC (ABANDONED)
1-25 Pr.#19 (ABANDONED)

H.H.20

H.H.19

H.H.18

H.H.15

H.H.14

H.H.13

H.H.3

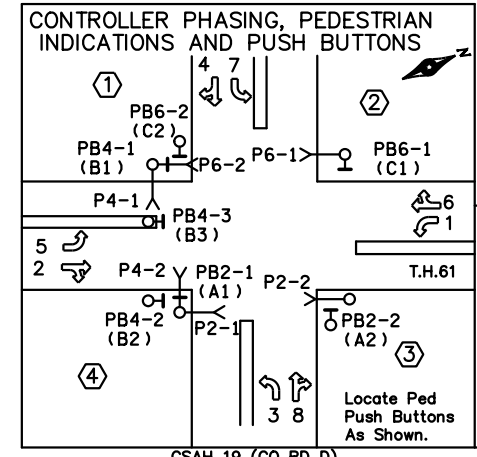
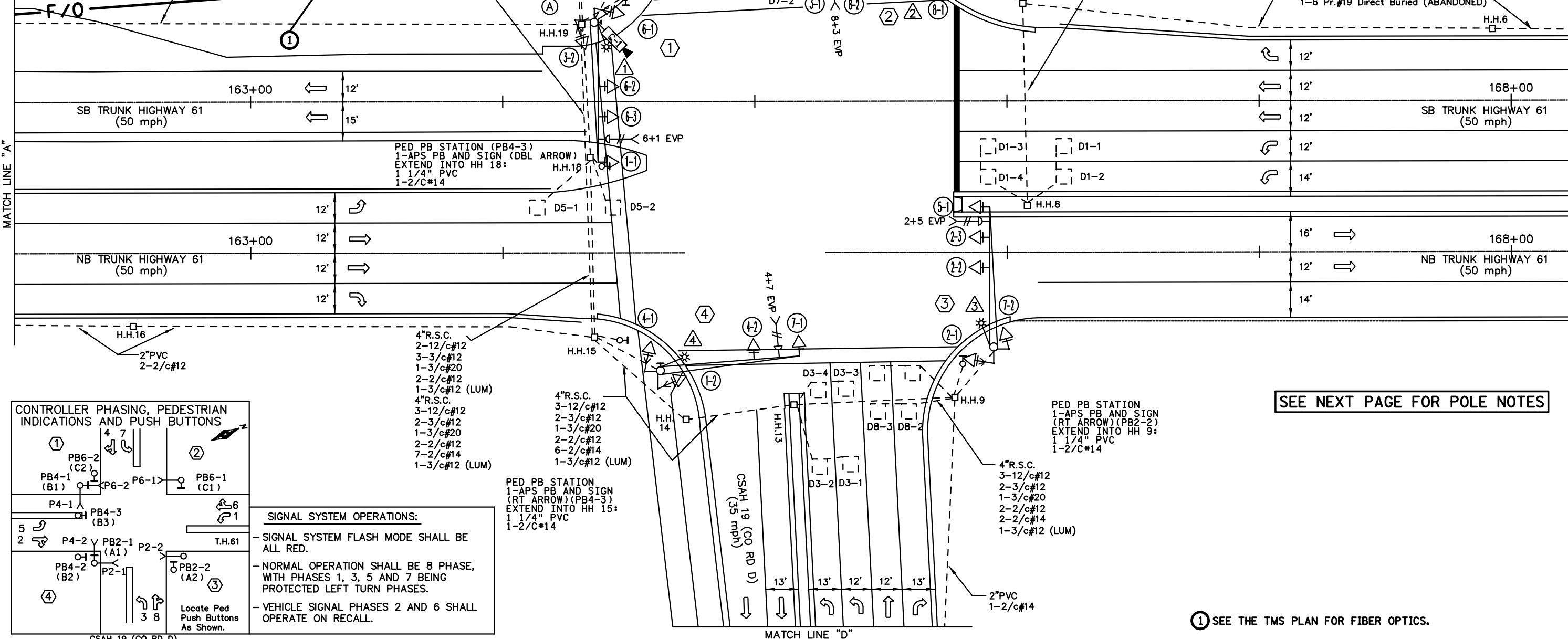
H.H.4

H.H.5

H.H.6

H.H.8

H.H.9



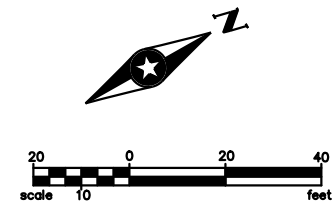
SIGNAL SYSTEM OPERATIONS:

- SIGNAL SYSTEM FLASH MODE SHALL BE ALL RED.
- NORMAL OPERATION SHALL BE 8 PHASE, WITH PHASES 1, 3, 5 AND 7 BEING PROTECTED LEFT TURN PHASES.
- VEHICLE SIGNAL PHASES 2 AND 6 SHALL OPERATE ON RECALL.

Locate Ped Push Buttons As Shown.

SIGNAL HEAD CHART			
SIGNAL FACE	ALL 12"		
	R	Y	G
1-1, 1-2	←	←	←
2-1, 2-2, 2-3	○	○	○
3-1, 3-2	←	←	←
4-1, 4-2	○	○	○
5-1, 5-2	←	←	←
6-1, 6-2, 6-3	○	○	○
7-1, 7-2	←	←	←
8-1, 8-2	○	○	○

ALL HEADS ARE 12" LEDS WITH BACKGROUND SHIELDS.



SEE NEXT PAGE FOR POLE NOTES

SEE THE TMS PLAN FOR FIBER OPTICS.

DISTRICT #: METRO
IPLOT NAME: T38332.sgl
PATH & FILENAME: IP_PWP-d079856\T38332.sgl.dgn

BY: EJA	DATE: 10-30-20	REVISIONS: AS-BUILT OF SP 6222-168 FIBER & CAMERA	SYSTEM ID: 38332	T.E.	INTERSECTION LAYOUT TH 61 AT CSAH 19 (CO RD D) MAPLEWOOD, RAMSEY COUNTY	S.A.P. NO.	DRAWN BY: SJK	CKD BY: EJA	DATE: 06-14-12
			METER ADDRESS: HIGHWAY 61/CO RD D	T.E.		CERTIFIED BY: _____	LIC. NO. _____	DATE: _____	
			MASTER ID:		STATE PROJ. NO. (T.H.61)	SHEET NO. 1 OF 4 SHEETS			

CONTROLLER AND CABINET
EQUIPMENT PAD - SEE DETAILS
SIGNAL SERVICE CABINET

CONTROLLER CABINET TO H.H.1:
4"R.S.C.
3-12/c#12 1-3/c#14 (CAMERA POWER)
2-3/c#12 1-COM CABLE
1-3/c#20 1-COAXIAL CABLE
4-2/c#14
4"R.S.C.
2-12/c#12
3-3/c#12
1-3/c#20
3-2/c#12
7-2/c#14

1-6 Pr.#19 Direct Buried (ABANDONED)
CONTROLLER CABINET TO H.H.19:
4"R.S.C.
3-12/c#12
2-3/c#12
1-3/c#20
2-2/c#12
9-2/c#14

4"R.S.C.
2-12/c#12
3-3/c#12
1-3/c#20
2-2/c#12
2-2/c#14
1-25 Pr.#19 (ABANDONED)

SERVICE CABINET TO H.H.1:
2"R.S.C.
2-3/c#12 (LUM)

SERVICE CABINET TO H.H.19:
2"R.S.C.
2-3/c#12 (LUM)

BETWEEN SERVICE CABINET AND
CONTROLLER CABINET:
2"R.S.C.
2-1/c#6
1-1/c#6 Ins. Gr.

SERVICE CABINET TO H.H.20:
2"R.S.C.
3-1/c#2

STUB OUT 1-3/4" PVC FROM
CONTROLLER CABINET TO
WEST

3"R.S.C. STUBOUT FROM
CONTROLLER CABINET TO
EAST (THREADED & CAPPED BOTH
ENDS-FOR FUTURE USE)

CONTROLLER CABINET TO TMS PULL VAULT
1 1/2" PVC INSIDE 3" RSC STUB OUT;
1-6SM FIBER OPTIC

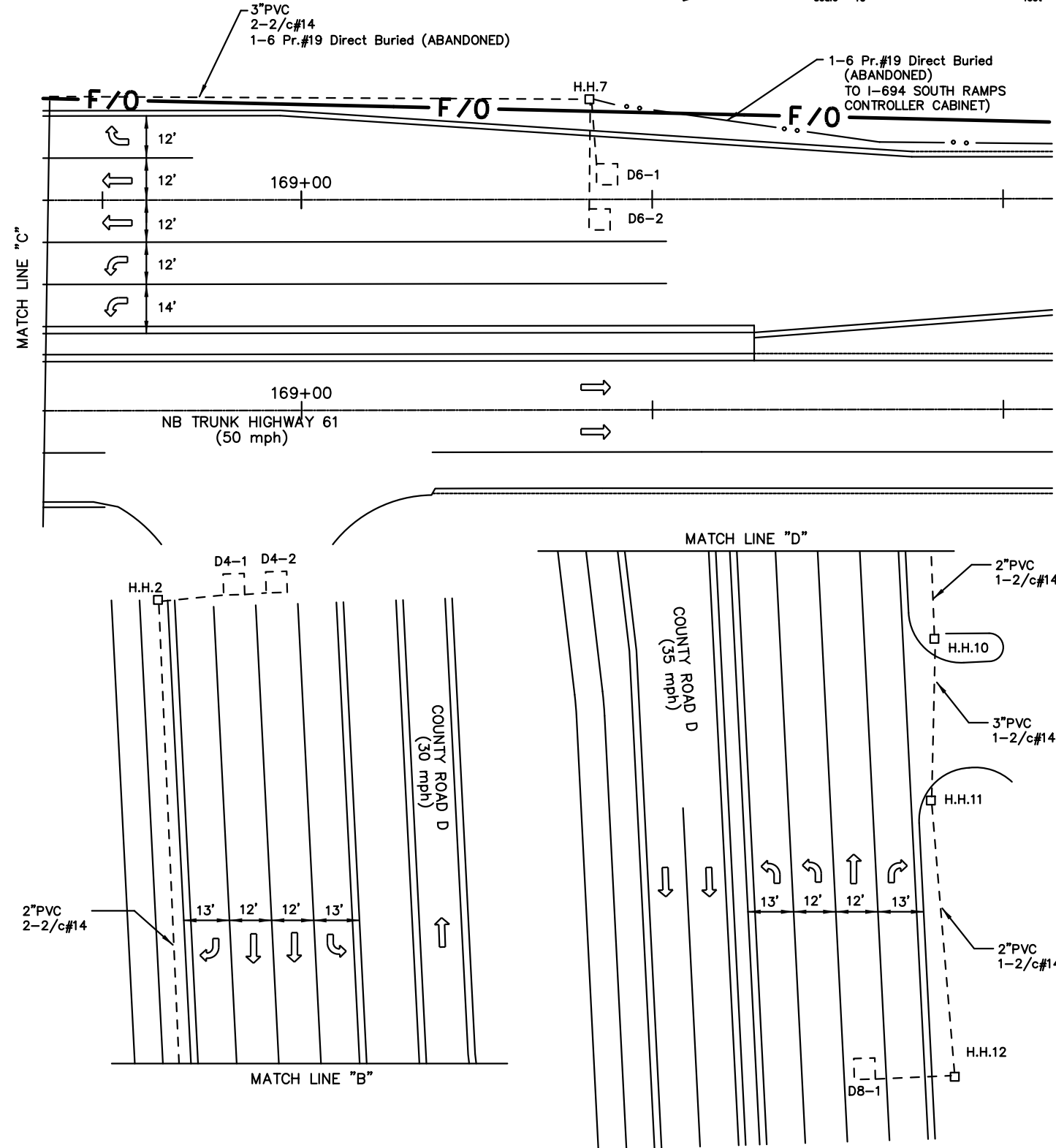
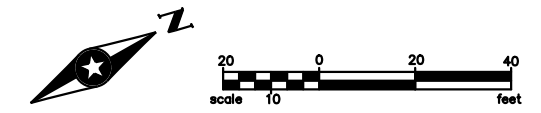
1 PA100 POLE FOUNDATION
TYPE PA100-A-55-1-X6-350/CAM 400 (X6 AT 350 DEG)
LUMINAIRE-250 W HPS
VIDEO CAMERA
3-ONE WAY SIGNALS AT 0', 17', & 29'
ONE WAY EVP DETECTOR AND LIGHT (6+1)
2-TYPE 10B AT 90 & 180 DEG
1-APS PB AND SIGN (LT ARROW) (PB4-1)
2-R6-1 SIGNS (L & R)
TYPE D SIGN
EXTEND INTO H.H.1:
3"R.S.C.
3-12/c#12
2-3/c#12
1-3/c#20
1-3/c#12 (LUM)
1-7/16" GROUNDING BRAID TO GROUND ROD IN H.H.1
1-3/c#14 (CAMERA POWER)
1-COM CABLE
1-COAXIAL CABLE

2 PA100 POLE FOUNDATION
TYPE PA100-A-50-D40-9 (DAVIT AT 350 DEG)
LUMINAIRE-250 W HPS
2-ONE WAY SIGNALS AT 0' & 17'
ONE WAY EVP DETECTOR AND LIGHT (8+3)
TYPE 10B AT 90 DEG
TYPE 10A AT 180 DEG
1-APS PUSH BUTTON AND SIGN (LT ARROW) (PB6-1)
R9-3 SIGN (FACING POLE 3)
2-R6-1 SIGNS (L & R)
TYPE D SIGN
EXTEND INTO H.H.4:
3"R.S.C.
2-12/c#12
3-3/c#12
1-3/c#20
1-2/c#14
1-3/c#12 (LUM)

3 PA100 POLE FOUNDATION
TYPE PA100-A-55-D40-9 (DAVIT AT 350 DEG)
LUMINAIRE-250 W HPS
3-ONE WAY SIGNALS AT 0', 11', & 23'
ONE WAY EVP DETECTOR AND LIGHT (2+5)
TYPE 10A AT 90 DEG
TYPE 10B AT 180 DEG
R9-3 SIGN (FACING POLE 2)
2-R6-1 SIGNS (L & R)
TYPE D SIGN
EXTEND INTO H.H.9:
3"R.S.C.
3-12/c#12
2-3/c#12
1-3/c#20
1-3/c#12 (LUM)

4 PA100 POLE FOUNDATION
TYPE PA100-A-55-D40-9 (DAVIT AT 315 DEG)
LUMINAIRE-250 W HPS
2-ONE WAY SIGNALS AT 0' & 17'
ONE WAY EVP DETECTOR AND LIGHT (4+7)
2-TYPE 10B AT 90 & 180 DEG
1-APS PB AND SIGN (LT ARROW) (PB2-1)
2-R6-1 SIGNS (L & R)
TYPE D SIGN
EXTEND INTO H.H.15:
3"R.S.C.
2-12/c#12
3-3/c#12
1-3/c#20
1-3/c#12 (LUM)

1 SEE THE TMS PLAN FOR FIBER OPTICS.



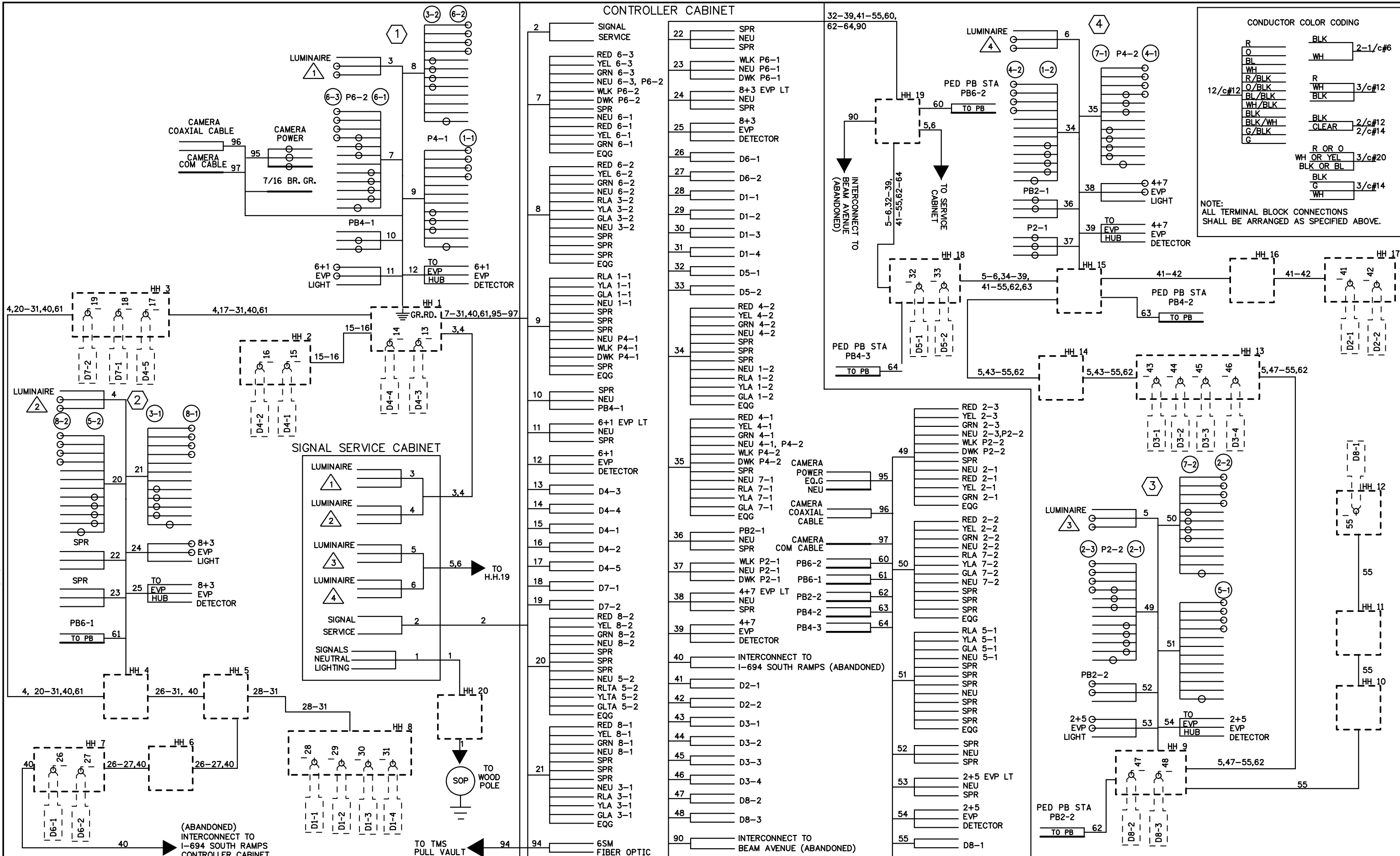
PLOTTED/REVISED: 10/30/2015

DISTRICT #: METRO
PLOT NAME: T38332.sgl
PATH & FILENAME: IP_PWP-d079856\T38332.sgl.dgn

BY: EJA	DATE: 10-30-20	REVISIONS: AS-BUILT OF SP 6222-168 FIBER & CAMERA	SYSTEM ID: 38332	T.E. 5547	MATCH LINES (1 OF 2) AND POLE NOTES TH 61 AT CSAH 19 (CO RD D) MAPLEWOOD, RAMSEY COUNTY	S.A.P. NO.	DRAWN BY: SJK	CKD BY: EJA	DATE: 06-14-12
			METER ADDRESS: HIGHWAY 61/CO RD D			CERTIFIED BY: _____	LIC. NO. _____	DATE: _____	
			MASTER ID:	T.E.		STATE PROJ. NO. (T.H. 61)	SHEET NO. 2 OF 4 SHEETS		

PLOTTED/REVISED: 10/30/2015

DISTRICT #: METRO
IPLOT NAME: T38332_sq1
PATH & FILENAME: IP_PWP-d0779856\T38332_sq1.dgn



BY	DATE	REVISIONS
EJA	10-30-20	AS-BUILT OF SP 6222-168 FIBER & CAMERA

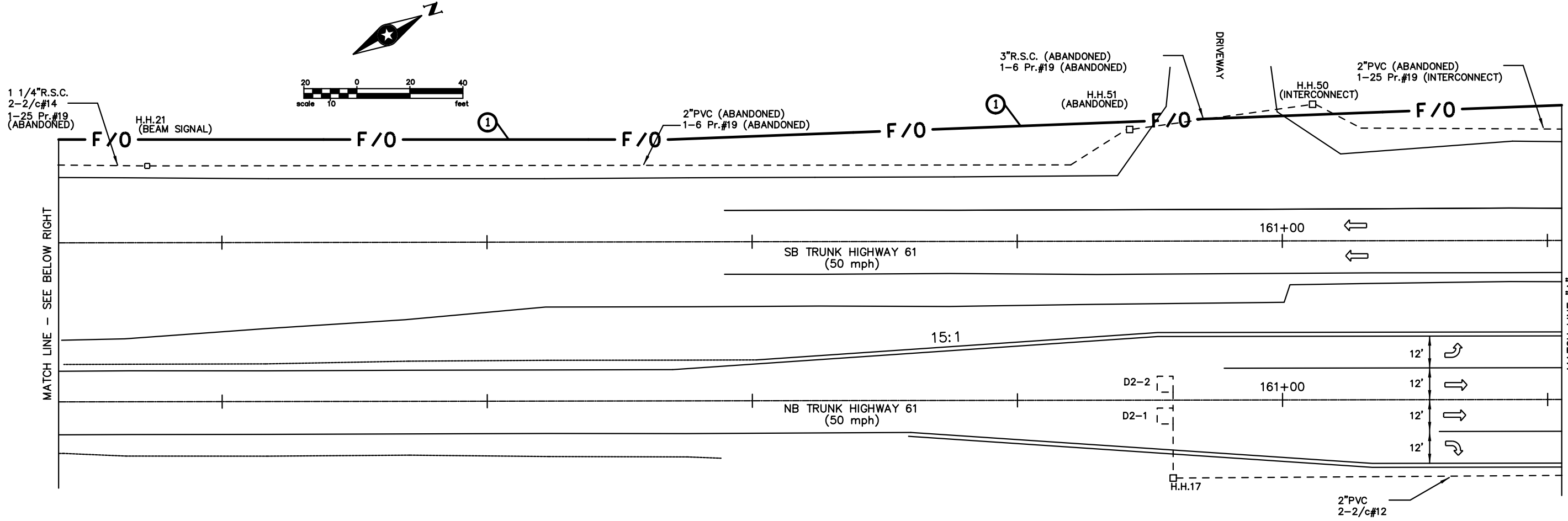
SYSTEM ID: 38332	T.E.
METER ADDRESS: HIGHWAY 61/CO RD D	
MASTER ID:	T.E.

FIELD WIRING DIAGRAM
TH 61 AT CSAH 19 (CO RD D)
MAPLEWOOD, RAMSEY COUNTY

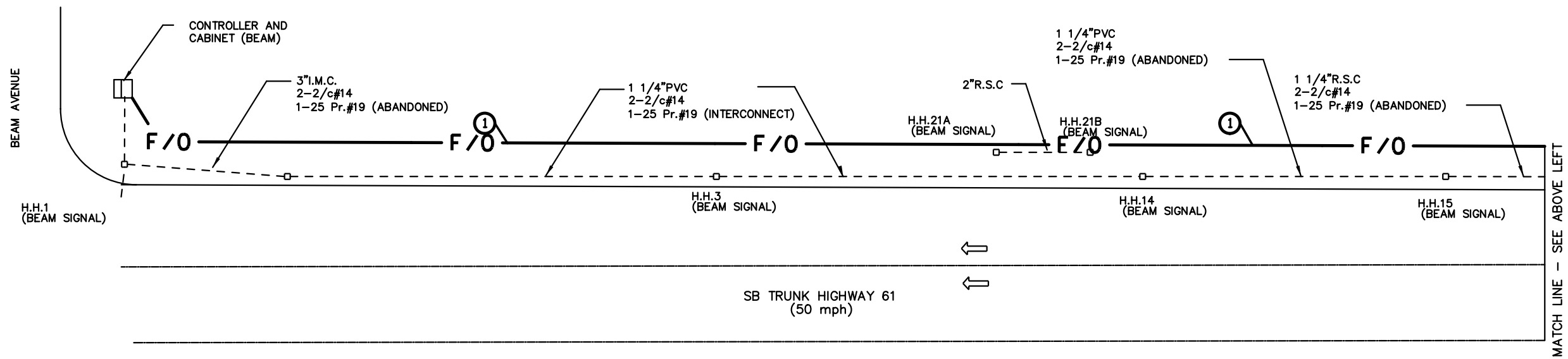
S.A.P. NO.	DRAWN BY: SJK	CKD BY: EJA	DATE: 06-14-12
CERTIFIED BY _____	LIC. NO. _____	DATE: _____	
STATE PROJ. NO.	(T.H. 61)	SHEET NO.	4 OF 4 SHEETS

PLOTTED/REVISED: 10/30/2015

DISTRICT #: METRO
 IPLOT NAME: T38332.sgl
 PATH & FILENAME: IP_PWP-d079856\T38332.sgl.dgn



- CABINET TO H.H.1:
 4" I.M.C.
 5-12/c#12
 3-3/c#12
 1-3/c#20
 14-2/c#14
 2-1/c#6
 1-1/c#6 Br.Gr.
 1-25 Pr.#19 (ABANDONED)



① SEE THE TMS PLAN FOR FIBER OPTICS.

BY	DATE	REVISIONS	SYSTEM ID: 38332	T.E.	S.A.P. NO.	DRAWN BY: SJK	CKD BY: EJA	DATE: 06-14-12
EJA	10-30-20	AS-BUILT OF SP 6222-168 FIBER & CAMERA	METER ADDRESS: HIGHWAY 61/CO RD D		CERTIFIED BY _____	LIC. NO. _____	DATE: _____	
			MASTER ID:	T.E.	STATE PROJ. NO.	(T.H.61)	SHEET NO.	3 OF 4 SHEETS
			MATCH LINES (2 OF 2) TH 61 AT CSAH 19 (CO RD D) MAPLEWOOD, RAMSEY COUNTY					