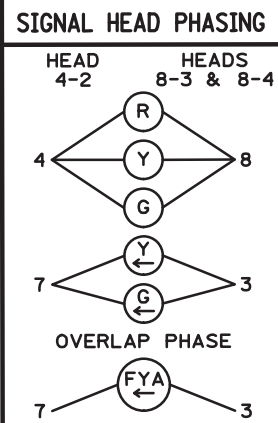
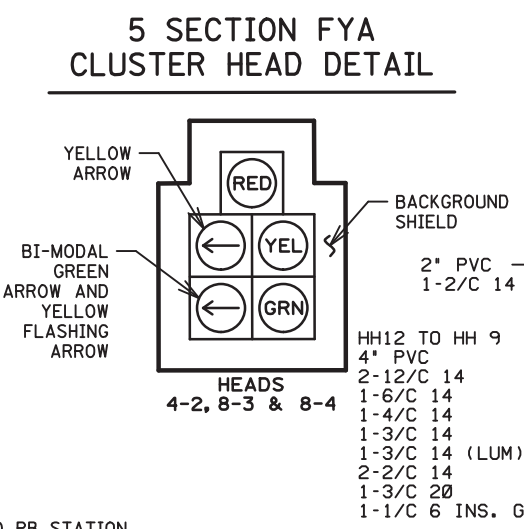


PLOTTED/REVISED: 16-SEP-2021

DISTRICT \*: Metro  
PLOT NAME: (T of 36) T.H.49 N Layout  
FILE NAME: Projects\DM\_FOS\055\0000\Traffic\Signals\2022 TH55 @ 149\000 RD-COMMERS NJCT T735415\PENDING\20925\_sgl.dgn

LOOP DETECTOR CHART		
NUMBER	SIZE (FT)	LOCATION
◆D1-1	2-6X6	35 & 65
◆D1-2	2-6X6	20 & 50
◆D2-1, D2-2, D2-3	6X6	475
D4-1	2-6X6	300
D4-2, D7-1	2-6X6	5 & 20
D8-1, D8-2	6X6	100
D8-3, D8-4	2-6X6	5 & 20
D8-5	6X6	5
◆D5-1, D5-2	2-6X6	20 & 50
◆D5-3, D5-4	2-6X6	5 & 35
◆D6-1, D6-2	6X6	475

-ALL LOOP DETECTORS ARE PVC  
-LOCATION: DISTANCE FROM CROSSWALK/STOP BAR IN FEET

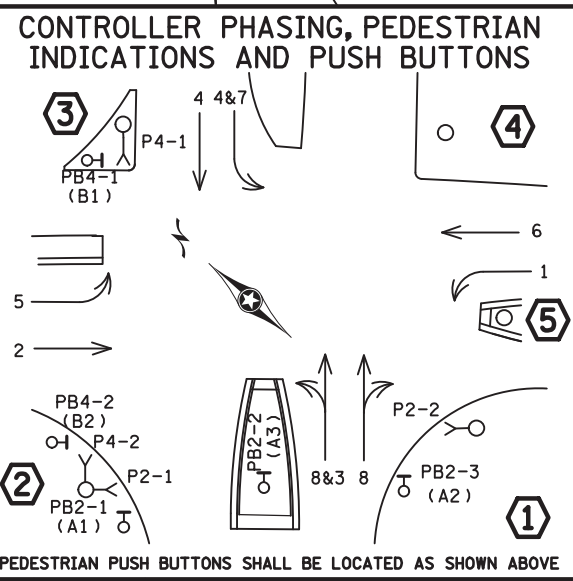
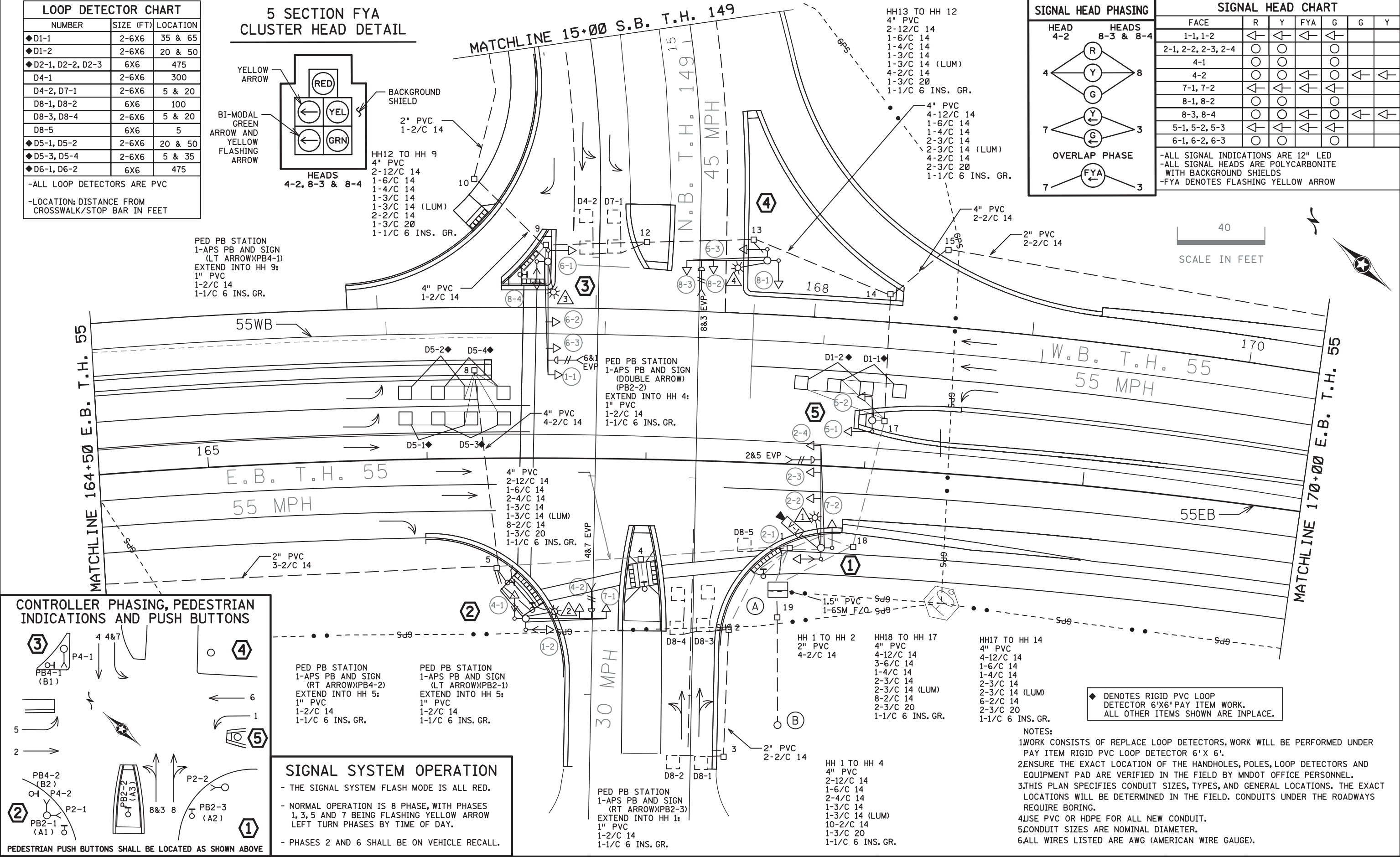


### SIGNAL HEAD CHART

FACE	R	Y	FYA	G	G	Y
1-1, 1-2	←	←	←	←		
2-1, 2-2, 2-3, 2-4	○	○		○		
4-1	○	○		○		
4-2	○	○	←	○	←	←
7-1, 7-2	←	←	←	←		
8-1, 8-2	○	○		○		
8-3, 8-4	○	○	←	○	←	←
5-1, 5-2, 5-3	←	←	←	←		
6-1, 6-2, 6-3	○	○		○		

-ALL SIGNAL INDICATIONS ARE 12" LED  
-ALL SIGNAL HEADS ARE POLYCARBONITE WITH BACKGROUND SHIELDS  
-FYA DENOTES FLASHING YELLOW ARROW

PED PB STATION  
1-APS PB AND SIGN (LT. ARROW)(PB4-1)  
EXTEND INTO HH 9:  
1" PVC  
1-2/C 14  
1-1/C 6 INS. GR.



PED PB STATION  
1-APS PB AND SIGN (RT. ARROW)(PB4-2)  
EXTEND INTO HH 5:  
1" PVC  
1-2/C 14  
1-1/C 6 INS. GR.

PED PB STATION  
1-APS PB AND SIGN (LT. ARROW)(PB2-1)  
EXTEND INTO HH 5:  
1" PVC  
1-2/C 14  
1-1/C 6 INS. GR.

### SIGNAL SYSTEM OPERATION

- THE SIGNAL SYSTEM FLASH MODE IS ALL RED.
- NORMAL OPERATION IS 8 PHASE, WITH PHASES 1, 3, 5 AND 7 BEING FLASHING YELLOW ARROW LEFT TURN PHASES BY TIME OF DAY.
- PHASES 2 AND 6 SHALL BE ON VEHICLE RECALL.

◆ DENOTES RIGID PVC LOOP DETECTOR 6'X6' PAY ITEM WORK. ALL OTHER ITEMS SHOWN ARE INPLACE.

NOTES:  
1.WORK CONSISTS OF REPLACE LOOP DETECTORS. WORK WILL BE PERFORMED UNDER PAY ITEM RIGID PVC LOOP DETECTOR 6' X 6'.  
2.ENSURE THE EXACT LOCATION OF THE HANDHOLES, POLES, LOOP DETECTORS AND EQUIPMENT PAD ARE VERIFIED IN THE FIELD BY MNDOT OFFICE PERSONNEL.  
3.THIS PLAN SPECIFIES CONDUIT SIZES, TYPES, AND GENERAL LOCATIONS. THE EXACT LOCATIONS WILL BE DETERMINED IN THE FIELD. CONDUITS UNDER THE ROADWAYS REQUIRE BORING.  
4.USE PVC OR HDPE FOR ALL NEW CONDUIT.  
5.CONDUIT SIZES ARE NOMINAL DIAMETER.  
6.ALL WIRES LISTED ARE AWG (AMERICAN WIRE GAUGE).

BY	DATE	REVISIONS	SYSTEM ID: 1735415	T.E.	S.A.P. NO.	DRAWN BY: MJB	CKD BY: RMV	DATE: 9/15/21
			METER ADDRESS: 3261 HIGHWAY 55		CERTIFIED BY: <i>Gregory Kim</i>	LIC. NO. 26829		DATE: 9/16/21
			OLD SYSTEM ID:		STATE PROJ. NO. 1909-99 (T.H.55) SHEET NO. SS17 OF SS36 SHEETS			

REPLACE LOOP DETECTORS INTERSECTION LAYOUT  
T.H. 55 AT T.H. 149 NORTH JUNCTION  
IN EAGAN, DAKOTA COUNTY

PLOTTED/REVISED: 16-SEP-2021

DISTRICT \*: Metro  
PLOT NAME: (18 of 36) TH149 N Matchlines  
FILE NAME: Projects\DM\_FOS\055\0000\Traffic\Signals\202.2 TH55 @ 149\DODD RD-COMMERS NJCT IT35415\PENDING\20925\_sgl.dgn

- ① 55EB STA. 167+82.0, 37.5' (RIGHT)  
PA100 POLE FOUNDATION  
TYPE PA100-A-45-X6-350/CAM 400 (MOUNTED AT 350 DEG)  
(INCLUDES LIGHTNING ROD, 7/16" GROUND BRAID AND GROUND ROD)  
1-ANGLE MOUNT SIGNAL OVERHEAD AT 0'  
2-STRAIGHT MOUNT SIGNALS OVERHEAD AT 11' AND 23'  
2-ANGLE MOUNT SIGNALS AT 90 AND 180 DEG  
1-ANGLE MOUNT C.D. PED HEAD AT 180°  
1-ONE WAY EVP DETECTOR AND CONFIRMATORY LIGHT (PHASES 6&1)  
LUMINAIRE-LED  
1-TYPE D SIGN (SEE SIGN DETAILS)  
1-R9-3 SIGN (NO PED) FACING POLE 4  
3" PVC TO HH 1:  
2-12/C 14  
1-6/C 14  
1-4/C 14  
1-3/C 14  
1-3/C 14 (LUM)  
1-3/C 20  
1-1/2" 6 INS. GR.  
1-COAXIAL CABLE  
1-CAT 6 CABLE  
1-3/C 14 (CAMERA POWER)  
1-7/16" BRAIDED GROUND

- ② 55EB STA. 166+45.0, 73.4' (RIGHT)  
PA90 POLE FOUNDATION  
TYPE PA90-A-35-D40-9 (DAVIT AT 350 DEG)  
1-ANGLE MOUNT SIGNAL OVERHEAD AT 0'  
1-STRAIGHT MOUNT SIGNAL OVERHEAD AT 11'  
2-ANGLE MOUNT SIGNALS AT 90 AND 180 DEG  
2-ANGLE MOUNT C.D. PED HEADS AT 90° AND 180°  
1-ONE WAY EVP DETECTOR AND CONFIRMATORY LIGHT (PHASES 4&7)  
LUMINAIRE-LED  
1-R10-X12 SIGN (42" x 48")  
ADJACENT TO HEAD 7-1  
1-TYPE D SIGN (SEE SIGN DETAILS)  
3" PVC TO HH 5:  
2-12/C 14  
1-6/C 14  
2-4/C 14  
1-3/C 14  
1-3/C 14 (LUM)  
1-3/C 20  
1-1/2" 6 INS. GR.

- ③ 55WB STA. 166+73.6, 33.1' (LEFT)  
PA100 POLE FOUNDATION  
TYPE PA100-A-50-D40-9 (DAVIT AT 350 DEG)  
1-ANGLE MOUNT SIGNAL OVERHEAD AT 0'  
2-STRAIGHT MOUNT SIGNALS OVERHEAD AT 11' AND 23'  
2-ANGLE MOUNT SIGNALS AT 90 AND 180 DEG  
1-ANGLE MOUNT C.D. PED HEAD AT 90°  
1-ONE WAY EVP DETECTOR AND CONFIRMATORY LIGHT (PHASES 6&1)  
LUMINAIRE-LED  
1-R10-X12-SIGN (42" X 48")  
ADJACENT TO HEAD 1-1  
1-TYPE D SIGN (SEE SIGN DETAILS)  
1-TYPE R9-3 SIGN (NO PED) FACING POLE 4  
3" PVC TO HH 9:  
2-12/C 14  
1-6/C 14  
1-4/C 14  
1-3/C 14  
1-3/C 14 (LUM)  
1-3/C 20  
1-1/2" 6 INS. GR.

- ④ 55WB STA. 167+72.4, 36.6' (LEFT)  
PA90 POLE FOUNDATION  
TYPE PA90-A-35-D40-9 (DAVIT AT 350 DEG)  
1-ANGLE MOUNT SIGNAL OVERHEAD AT 0'  
1-STRAIGHT MOUNT SIGNAL OVERHEAD AT 11'  
2-ANGLE MOUNT SIGNALS AT 90 AND 180 DEG  
1-ONE WAY EVP DETECTOR AND CONFIRMATORY LIGHT (PHASES 8&3)  
LUMINAIRE-LED  
1-R10-X12 SIGN (42" x 48")  
ADJACENT TO HEAD 8-3  
1-TYPE D SIGN (SEE SIGN DETAILS)  
2-TYPE R9-3 SIGNS (NO PED) FACING POLES 1 & 3  
3" PVC TO HH 13:  
2-12/C 14  
1-3/C 14  
1-3/C 14 (LUM)  
1-3/C 20  
1-1/2" 6 INS. GR.
- Ⓟ SOP-WOOD POLE (BY XCEL ENERGY)  
2" RISER, WEATHERHEAD AND PVC TO HH 19:  
3-1/2" 2

- Ⓐ EQUIPMENT PAD (SEE DETAIL SHEET)  
SERVICE CABINET (SSB)  
CONTROLLER AND CABINET)  
2-4" PVC TO HH 1:  
4-12/C 14  
2-6/C 14  
3-4/C 14  
2-3/C 14  
16-2/C 14  
2-3/C 20  
2-1/2" 6 INS. GR.  
1-COAXIAL CABLE  
1-CAT 6 CABLE  
1-3/C 14 (CAMERA POWER)
- 2-4" PVC TO HH 18:  
4-12/C 14  
3-6/C 14  
1-4/C 14  
2-3/C 14  
8-2/C 14  
2-3/C 20  
1-1/2" 6 INS. GR.

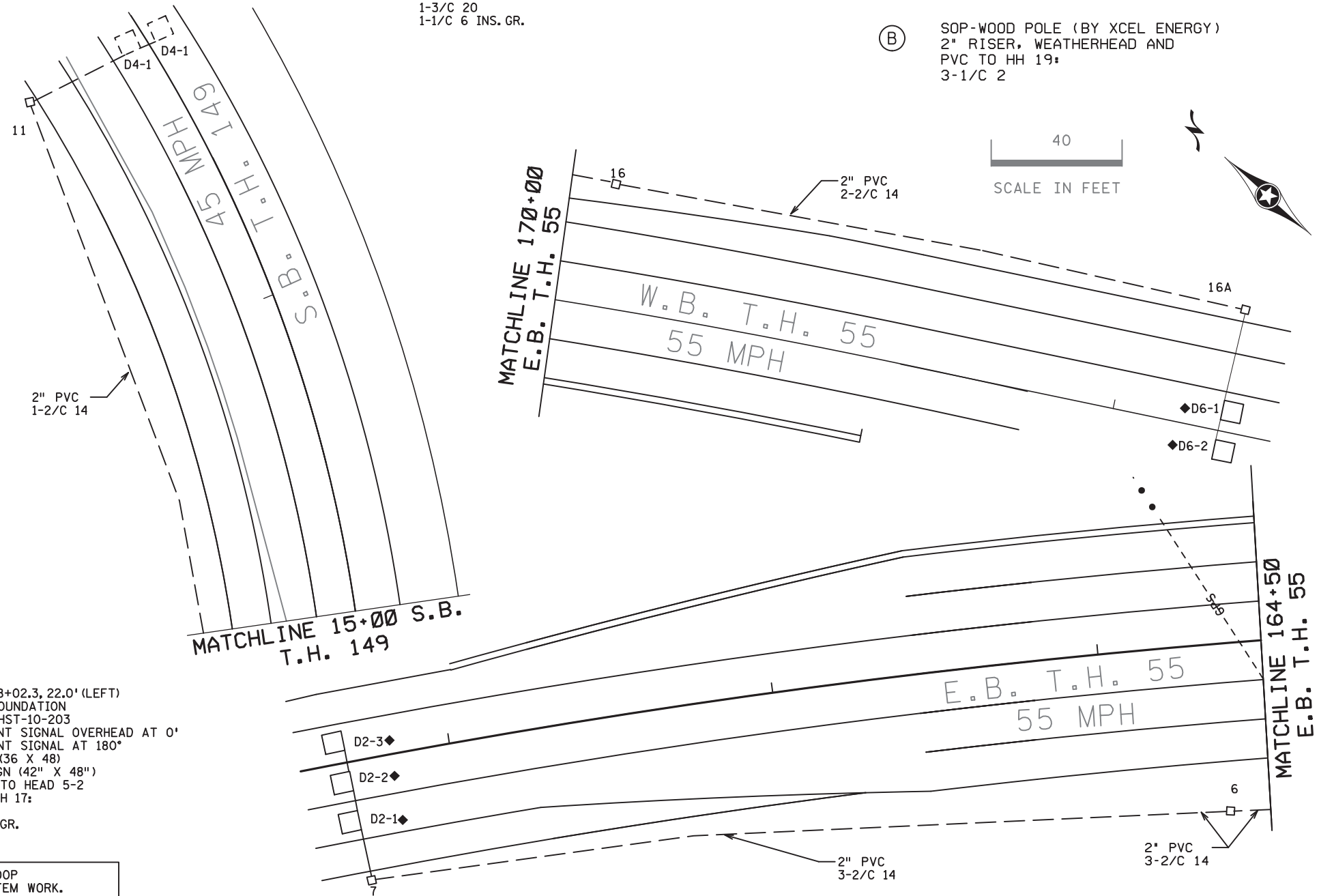
1-2" AND 1-3" PVC STUBBED OUT (CAPPED BOTH ENDS)  
3/4" PVC STUBBED OUT (FOR TELEPHONE LINE)

CONTROLLER CABINET TO TMS VAULT  
1.5" PVC  
1-6SM FO PIGTAIL

CONTROLLER CABINET TO SERVICE CABINET:  
2" PVC  
2-1/2" 6  
1-1/2" 6 INS. GR.  
CONTROLLER CABINET TO SERVICE CABINET (COMMS):  
2" PVC  
1-6PR 19  
SERVICE CABINET TO HH 19:  
2" PVC  
3-1/2" 2  
SERVICE CABINET TO HH 1:  
2" PVC  
4-3/C 14 (LUM)  
HH 18 TO HH 1:  
2" PVC  
2-3/C 14 (LUM)

- ⑤ 55EB STA. 168+02.3, 22.0' (LEFT)  
PA85 POLE FOUNDATION  
TYPE PA85-AHST-10-203  
1-ANGLE MOUNT SIGNAL OVERHEAD AT 0'  
1-ANGLE MOUNT SIGNAL AT 180°  
1-R4-7 SIGN (36 X 48)  
1-R10-X12 SIGN (42" X 48")  
ADJACENT TO HEAD 5-2  
3" PVC TO HH 17:  
2-6/C 14  
1-1/2" 6 INS. GR.

◆ DENOTES RIGID PVC LOOP DETECTOR 6'X6' PAY ITEM WORK.  
ALL OTHER ITEMS SHOWN ARE INPLACE.



BY	DATE	REVISIONS

SYSTEM ID: 1735415	T.E.
METER ADDRESS: 3261 HIGHWAY 55	
OLD SYSTEM ID:	

**REPLACE LOOP DETECTORS  
MATCHLINE LAYOUT AND POLE NOTES  
T.H. 55 AND T.H. 149, NORTH JUNCTION  
IN EAGAN, DAKOTA COUNTY**

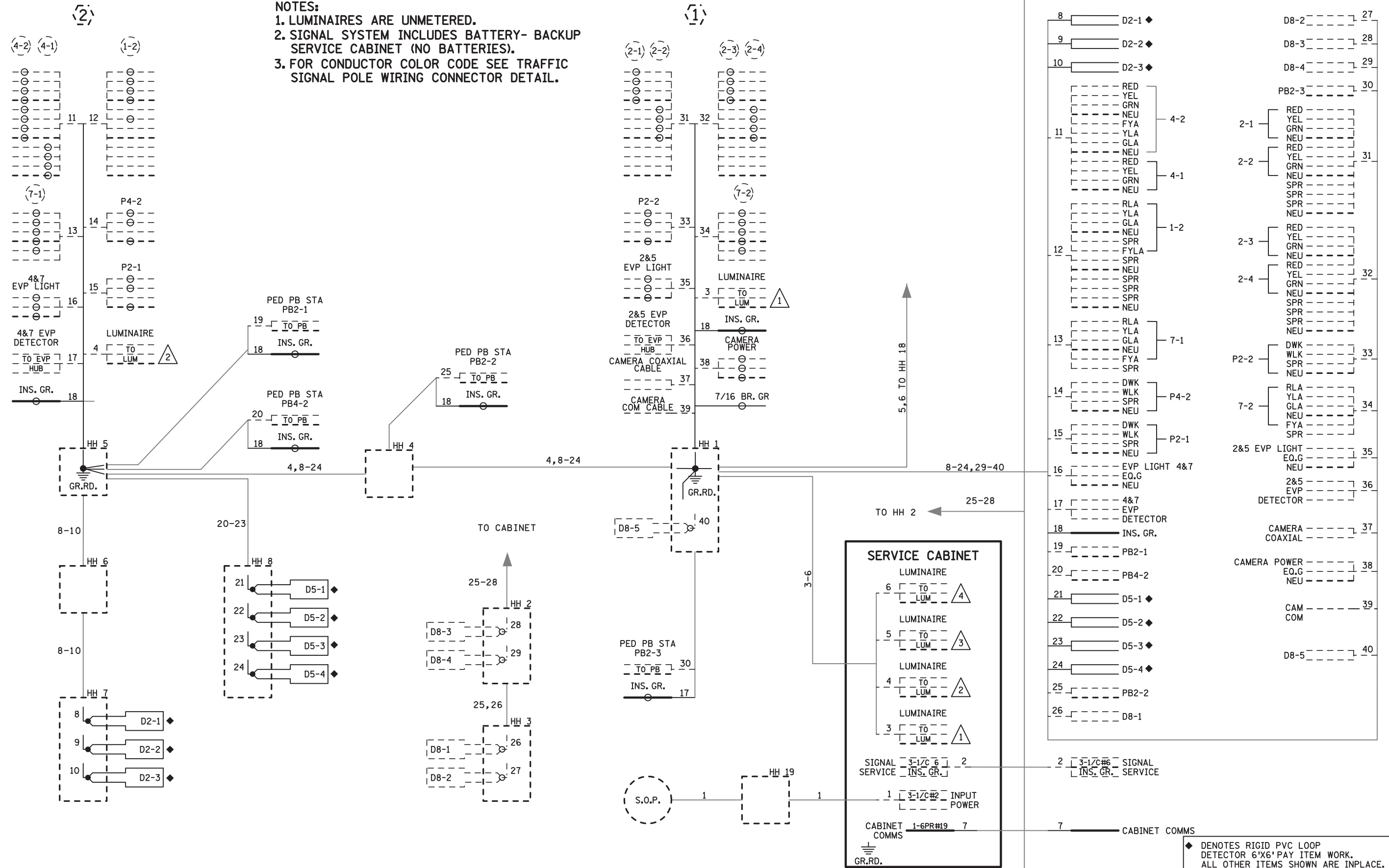
S.A.P. NO.	DRAWN BY: MJB	CKD BY: RMV	DATE: 9/15/21
CERTIFIED BY: <i>Gregory Ken</i>	LIC. NO. 26829	DATE: 9/16/21	
STATE PROJ. NO. 1909-99 (T.H.55)		SHEET NO. SS18 OF SS36 SHEETS	

PLOTTED/REVISED: 16-SEP-2021

DISTRICT \*: Metro  
PLOT NAME: (19 of 36) TH149 N Wiring 1  
FILENAME: Projects\DM\_FOS\055\0000\Traffic\Signal\202.2 TH55 @ 149\DODD RD-COMMERS NJCT IT35415\PENDNG\20925\_sgl.dgn

# CONTROLLER CABINET

- NOTES:**
- LUMINAIRES ARE UNMETERED.
  - SIGNAL SYSTEM INCLUDES BATTERY- BACKUP SERVICE CABINET (NO BATTERIES).
  - FOR CONDUCTOR COLOR CODE SEE TRAFFIC SIGNAL POLE WIRING CONNECTOR DETAIL.



◆ DENOTES RIGID PVC LOOP DETECTOR 6'X6' PAY ITEM WORK. ALL OTHER ITEMS SHOWN ARE INPLACE.

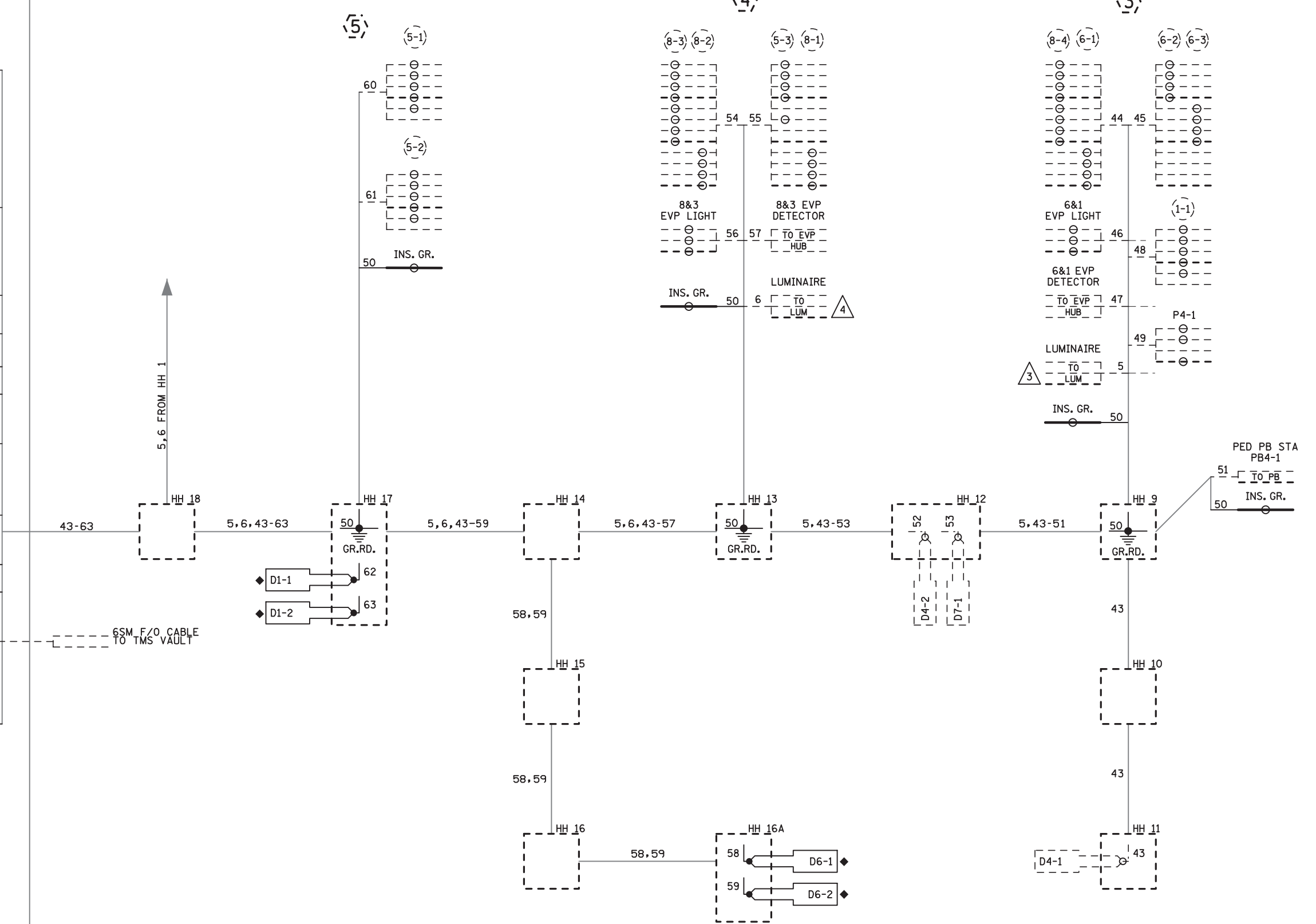
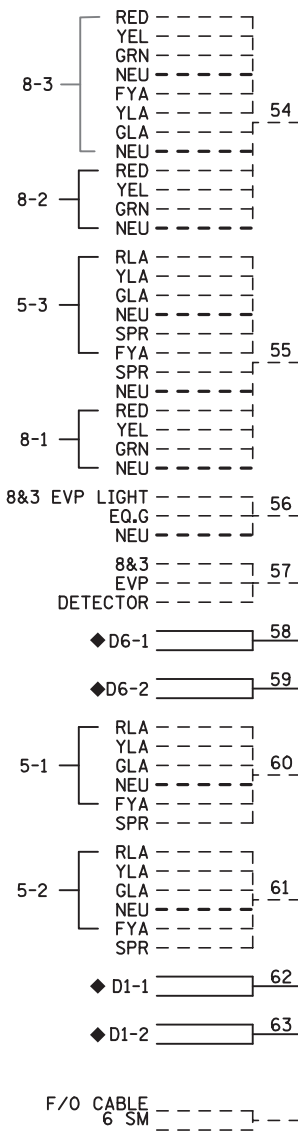
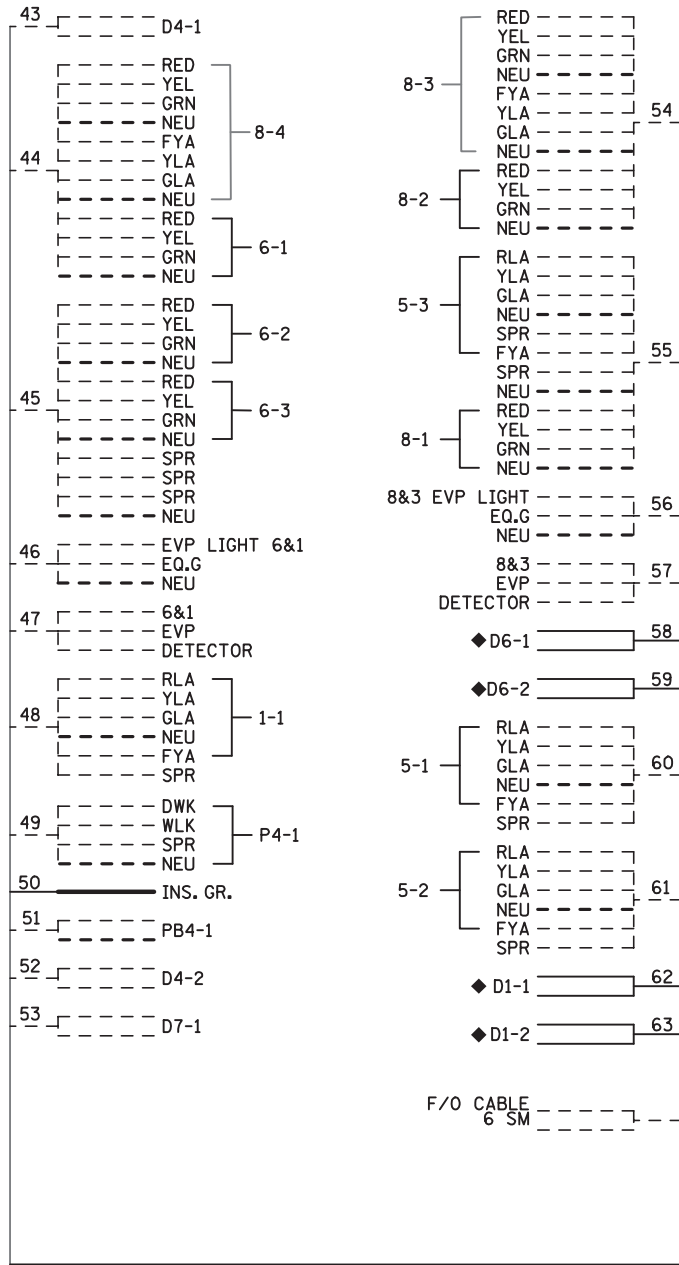
BY	DATE	REVISIONS

SYSTEM ID: 1735415 T.E.  
METER ADDRESS: 3261 HIGHWAY 55  
OLD SYSTEM ID:

**REPLACE LOOP DETECTORS WIRING DIAGRAM (1 OF 2)**  
T.H. 55 AT T.H. 149, NORTH JUNCTION IN EAGAN, DAKOTA COUNTY

S.A.P. NO. \_\_\_\_\_ DRAWN BY: MJB CKD BY: RMV DATE: 9/15/21  
CERTIFIED BY: *Gregory Kim* LIC. NO. 26829 DATE: 9/16/21  
STATE PROJ. NO. 1909-99 (T.H.55) SHEET NO. SS19 OF SS36 SHEETS

# CONTROLLER CABINET



- NOTES:**
- LUMINAIRES ARE UNMETERED.
  - SIGNAL SYSTEM INCLUDES BATTERY- BACKUP SERVICE CABINET (NO BATTERIES).
  - FOR CONDUCTOR COLOR CODE SEE TRAFFIC SIGNAL POLE WIRING CONNECTOR DETAIL.

◆ DENOTES RIGID PVC LOOP DETECTOR 6'X6' PAY ITEM WORK. ALL OTHER ITEMS SHOWN ARE INPLACE.

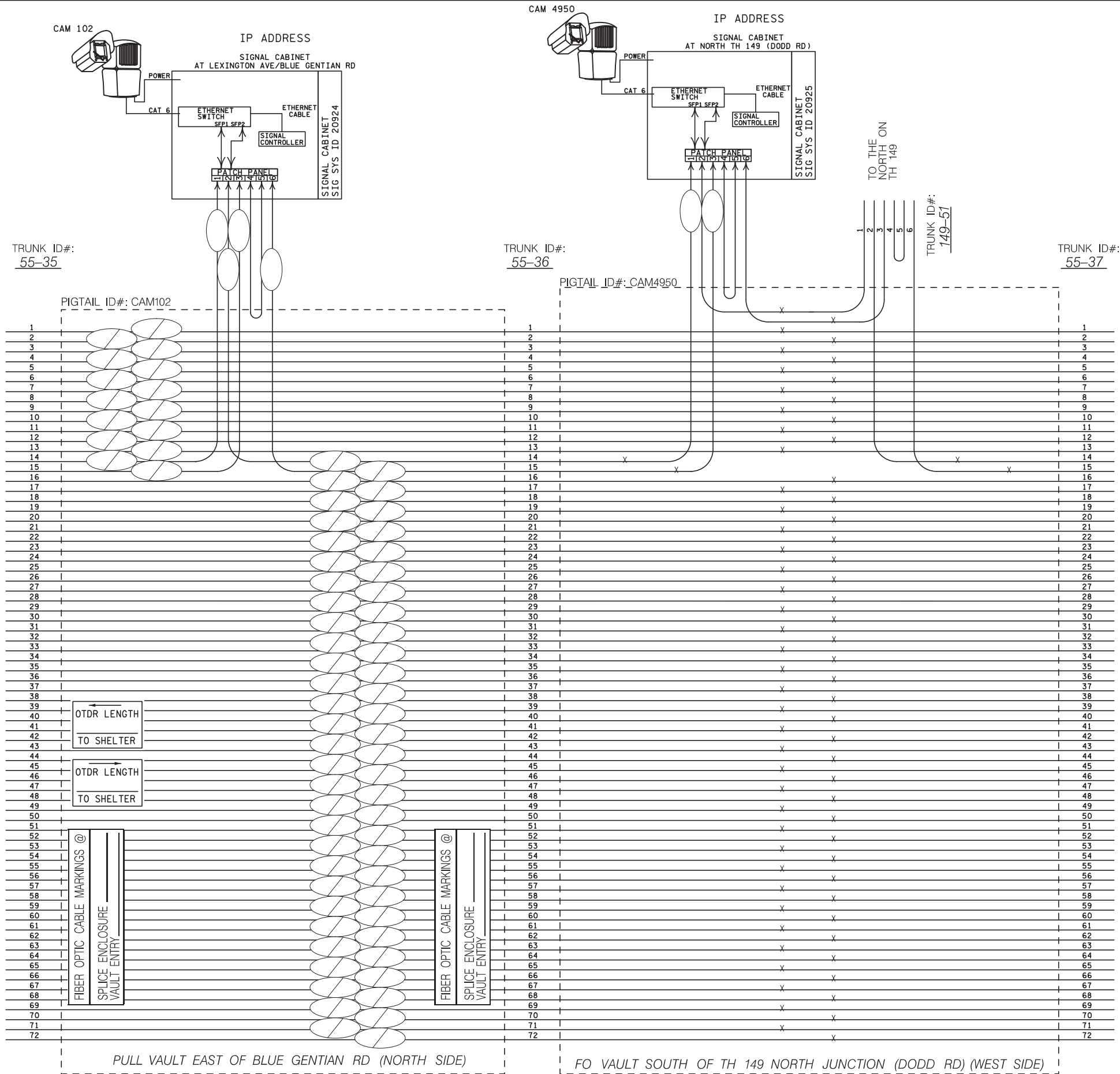
DISTRICT \*: Metro  
 IPLOT NAME: (20 of 36) TH149 N Wiring 2  
 FILENAME: Projects\DM\_POS\055\0000\Traffic\Signals\202.2 TH55 @ 149\DDDD RD-COMMERS N.JT 1735415\PENDING\20925\_sgl.dgn  
 PLOTTED/REVISED: 16-SEP-2021

BY	DATE	REVISIONS

SYSTEM ID: 1735415 T.E.  
 METER ADDRESS: 3261 HIGHWAY 55  
 OLD SYSTEM ID:

**REPLACE LOOP DETECTORS  
 WIRING DIAGRAM (2 OF 2)  
 T.H. 55 AT T.H. 149, NORTH JUNCTION  
 IN EAGAN, DAKOTA COUNTY**

S.A.P. NO. \_\_\_\_\_  
 DRAWN BY: MJB CKD BY: RMV DATE: 9/15/21  
 CERTIFIED BY: *Gregory Ken* LIC. NO. 26829 DATE: 9/16/21  
 STATE PROJ. NO. 1909-99 (T.H.55) SHEET NO. SS20 OF SS36 SHEETS



REV. NO.	DATE: / /
REV. NO.	DATE: / /

CERTIFIED BY *Mohd P Manji* LIC.NO. 43957 JUNE 29 2021  
 LICENSED PROFESSIONAL ENGINEER

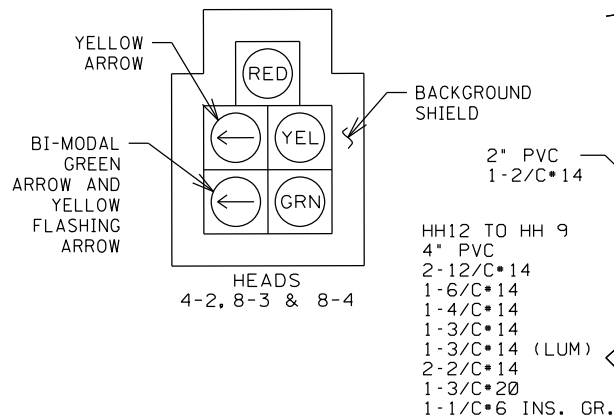
PLOTTED/REVISED: \$\$\$@DATE@\$\$\$

DISTRICT #: \$\$\$@DISTRICT@  
PLOT NAME: \$\$\$@PLOT\$NAME@  
PATH & FILENAME: \$\$\$@PATH\$FILENAME@\$\$\$

LOOP DETECTOR CHART		
NUMBER	SIZE (FT)	LOCATION
D1-1	2-6X6	35 & 65
D1-2	2-6X6	20 & 50
D2-1, D2-2, D2-3	6X6	475
D4-1	2-6X6	300
D4-2, D7-1	2-6X6	5 & 20
D8-1, D8-2	6X6	100
D8-3, D8-4	2-6X6	5 & 20
D8-5	6X6	5
D5-1, D5-2	2-6X6	20 & 50
D5-3, D5-4	2-6X6	5 & 35
D6-1, D6-2	6X6	475

-ALL LOOP DETECTORS ARE PVC  
-LOCATION: DISTANCE FROM CROSSWALK/STOP BAR IN FEET

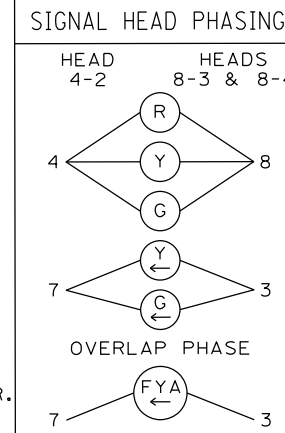
### 5 SECTION FYA CLUSTER HEAD DETAIL



PED PB STATION  
1-APS PB AND SIGN (LT ARROW)(PB4-1)  
EXTEND INTO HH 9:  
1" PVC  
1-2/C#14  
1-1/C#6 INS. GR.

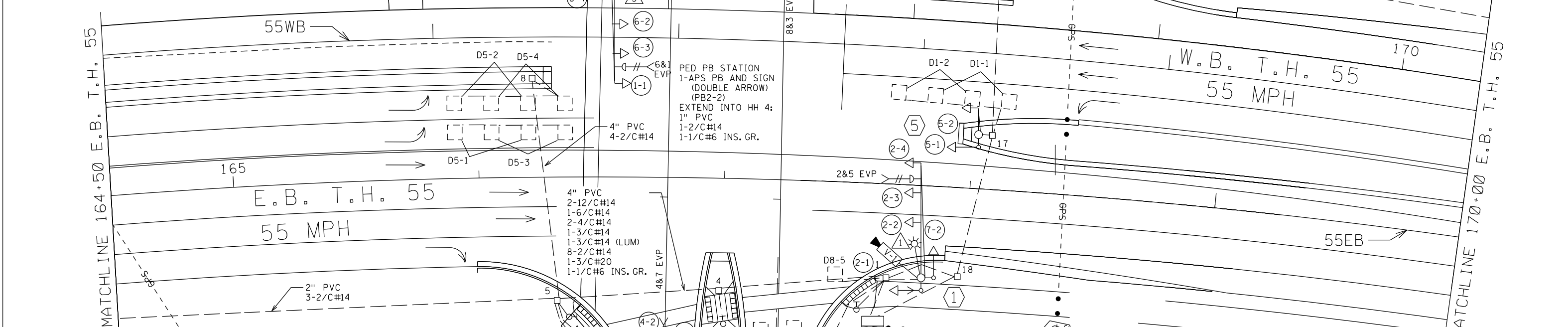
MATCHLINE 15+00 S.B. T.H. 149

HH13 TO HH 12  
4" PVC  
2-12/C#14  
1-6/C#14  
1-4/C#14  
1-3/C#14  
1-3/C#14 (LUM)  
4-2/C#14  
1-3/C#20  
1-1/C#6 INS. GR.

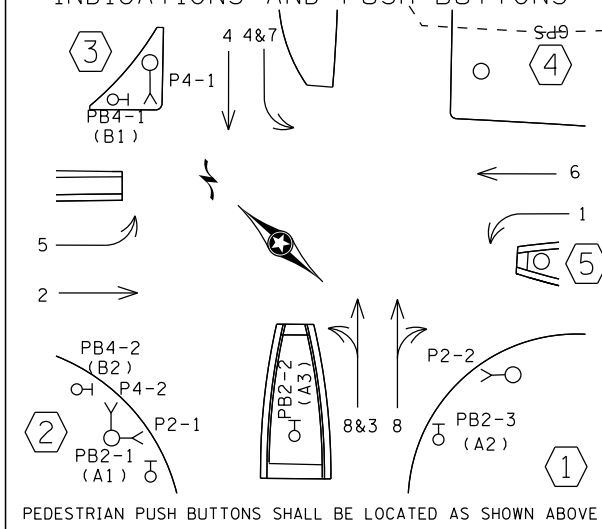


SIGNAL HEAD CHART						
FACE	R	Y	FYA	G	G	Y
1-1, 1-2	←	←	←	←		
2-1, 2-2, 2-3, 2-4	○	○		○		
4-1	○	○	←	○	←	←
4-2	○	○	←	○	←	←
7-1, 7-2	←	←	←	←		
8-1, 8-2	○	○		○		
8-3, 8-4	○	○	←	○	←	←
5-1, 5-2, 5-3	←	←	←	←		
6-1, 6-2, 6-3	○	○		○		

-ALL SIGNAL INDICATIONS ARE 12" LED  
-ALL SIGNAL HEADS ARE POLYCARBONITE WITH BACKGROUND SHIELDS  
-FYA DENOTES FLASHING YELLOW ARROW



### CONTROLLER PHASING, PEDESTRIAN INDICATIONS AND PUSH BUTTONS



PED PB STATION  
1-APS PB AND SIGN (RT ARROW)(PB4-2)  
EXTEND INTO HH 5:  
1" PVC  
1-2/C#14  
1-1/C#6 INS. GR.

PED PB STATION  
1-APS PB AND SIGN (LT ARROW)(PB2-1)  
EXTEND INTO HH 5:  
1" PVC  
1-2/C#14  
1-1/C#6 INS. GR.

**SIGNAL SYSTEM OPERATION**

- THE SIGNAL SYSTEM FLASH MODE IS ALL RED.
- NORMAL OPERATION IS 8 PHASE, WITH PHASES 1, 3, 5 AND 7 BEING FLASHING YELLOW ARROW LEFT TURN PHASES BY TIME OF DAY.
- PHASES 2 AND 6 SHALL BE ON VEHICLE RECALL.

PED PB STATION  
1-APS PB AND SIGN (RT ARROW)(PB2-3)  
EXTEND INTO HH 1:  
1" PVC  
1-2/C#14  
1-1/C#6 INS. GR.

HH 1 TO HH 2  
4" PVC  
2-2/C#14

HH18 TO HH 17  
4" PVC  
4-12/C#14  
3-6/C#14  
1-4/C#14  
2-3/C#14  
2-3/C#14 (LUM)  
8-2/C#14  
2-3/C#20  
1-1/C#6 INS. GR.

HH17 TO HH 14  
4" PVC  
4-12/C#14  
1-6/C#14  
1-4/C#14  
2-3/C#14  
2-3/C#14 (LUM)  
6-2/C#14  
2-3/C#20  
1-1/C#6 INS. GR.

HH 1 TO HH 4  
4" PVC  
2-12/C#14  
1-6/C#14  
2-4/C#14  
1-3/C#14  
1-3/C#14 (LUM)  
10-2/C#14  
1-3/C#20  
1-1/C#6 INS. GR.

BY	DATE	REVISIONS
EJA	12-16-14	AS-BUILTS OF SP 1905-95 AND 8825-388
MAS	6-24-15	ADDED TMS FIBER OPTIC FROM SP 8825-388

SYSTEM ID: 20925 T.E. 6030  
METER ADDRESS: 3261 HIGHWAY 55  
MASTER ID: T.E.

INTERSECTION LAYOUT  
T.H. 55 AT T.H. 149, NORTH JUNCTION  
IN EAGAN, DAKOTA COUNTY

CERTIFIED BY: *Michael P. Subrinsky*  
(T.H. 55)

DRAWN BY: MAS CKD BY: GAK DATE: 1/10/14  
LIC. NO. 19863 DATE: 1/16/14  
SHEET NO. 1 OF 5 SHEETS

PLOTTED/REVISED: \$\$\$@DATE@\$\$\$

- ① 55EB STA. 167+82.0, 37.5' (RIGHT)  
PA100 POLE FOUNDATION  
TYPE PA100-A-45-X6-350/CAM 400 (MOUNTED AT 350 DEG)  
(INCLUDES LIGHTNING ROD, 7/16" GROUND BRAID AND GROUND ROD)  
1-ANGLE MOUNT SIGNAL OVERHEAD AT 0'  
2-STRAIGHT MOUNT SIGNALS OVERHEAD  
AT 11' AND 23'  
2-ANGLE MOUNT SIGNALS AT 90 AND 180 DEG  
1-ANGLE MOUNT C.D. PED HEAD AT 180°  
1-ONE WAY EVP DETECTOR AND  
CONFIRMATORY LIGHT (PHASES 6&1)  
LUMINAIRE-LED  
1-TYPE D SIGN (SEE SIGN DETAILS)  
1-R9-3 SIGN (NO PED) FACING POLE 4  
3" PVC TO HH 1:  
2-12/C #14  
1-6/C #14  
1-4/C #14  
1-3/C #14  
1-3/C #14 (LUM)  
1-3/C #20  
1-1/C #6 INS. GR.  
1-COAXIAL CABLE  
1-CAT 6 CABLE  
1-3/C #14 (CAMERA POWER)  
1-7/16" BRAIDED GROUND

- ② 55EB STA. 166+45.0, 73.4' (RIGHT)  
PA90 POLE FOUNDATION  
TYPE PA90-A-35-D40-9 (DAVIT AT 350 DEG)  
1-ANGLE MOUNT SIGNAL OVERHEAD AT 0'  
1-STRAIGHT MOUNT SIGNAL OVERHEAD AT 11'  
2-ANGLE MOUNT SIGNALS AT 90 AND 180 DEG  
2-ANGLE MOUNT C.D. PED HEADS AT 90° AND 180°  
1-ONE WAY EVP DETECTOR AND  
CONFIRMATORY LIGHT (PHASES 4&7)  
LUMINAIRE-LED  
1-R10-X12 SIGN (42" x 48")  
ADJACENT TO HEAD 7-1  
1-TYPE D SIGN (SEE SIGN DETAILS)  
3" PVC TO HH 5:  
2-12/C #14  
1-6/C #14  
2-4/C #14  
1-3/C #14  
1-3/C #14 (LUM)  
1-3/C #20  
1-1/C #6 INS. GR.

- ③ 55WB STA. 166+73.6, 33.1' (LEFT)  
PA100 POLE FOUNDATION  
TYPE PA100-A-50-D40-9 (DAVIT AT 350 DEG)  
1-ANGLE MOUNT SIGNAL OVERHEAD AT 0'  
2-STRAIGHT MOUNT SIGNALS OVERHEAD  
AT 11' AND 23'  
2-ANGLE MOUNT SIGNALS AT 90 AND 180 DEG  
1-ANGLE MOUNT C.D. PED HEAD AT 90°  
1-ONE WAY EVP DETECTOR AND  
CONFIRMATORY LIGHT (PHASES 6&1)  
LUMINAIRE-LED  
1-R10-X12-SIGN (42" x 48")  
ADJACENT TO HEAD 1-1  
1-TYPE D SIGN (SEE SIGN DETAILS)  
1-TYPE R9-3 SIGN (NO PED) FACING POLE 4  
3" PVC TO HH 9:  
2-12/C #14  
1-6/C #14  
1-4/C #14  
1-3/C #14  
1-3/C #14 (LUM)  
1-3/C #20  
1-1/C #6 INS. GR.

- ④ 55WB STA. 167+72.4, 36.6' (LEFT)  
PA90 POLE FOUNDATION  
TYPE PA90-A-35-D40-9 (DAVIT AT 350 DEG)  
1-ANGLE MOUNT SIGNAL OVERHEAD AT 0'  
1-STRAIGHT MOUNT SIGNAL OVERHEAD AT 11'  
2-ANGLE MOUNT SIGNALS AT 90 AND 180 DEG  
1-ONE WAY EVP DETECTOR AND  
CONFIRMATORY LIGHT (PHASES 8&3)  
LUMINAIRE-LED  
1-R10-X12 SIGN (42" x 48")  
ADJACENT TO HEAD 8-3  
1-TYPE D SIGN (SEE SIGN DETAILS)  
2-TYPE R9-3 SIGNS (NO PED) FACING POLES 1 & 3  
3" PVC TO HH 13:  
2-12/C #14  
1-3/C #14  
1-3/C #14 (LUM)  
1-3/C #20  
1-1/C #6 INS. GR.

- ⑤ SOP-WOOD POLE (BY XCEL ENERGY)  
2" RISER, WEATHERHEAD AND  
PVC TO HH 19:  
3-1/C #2

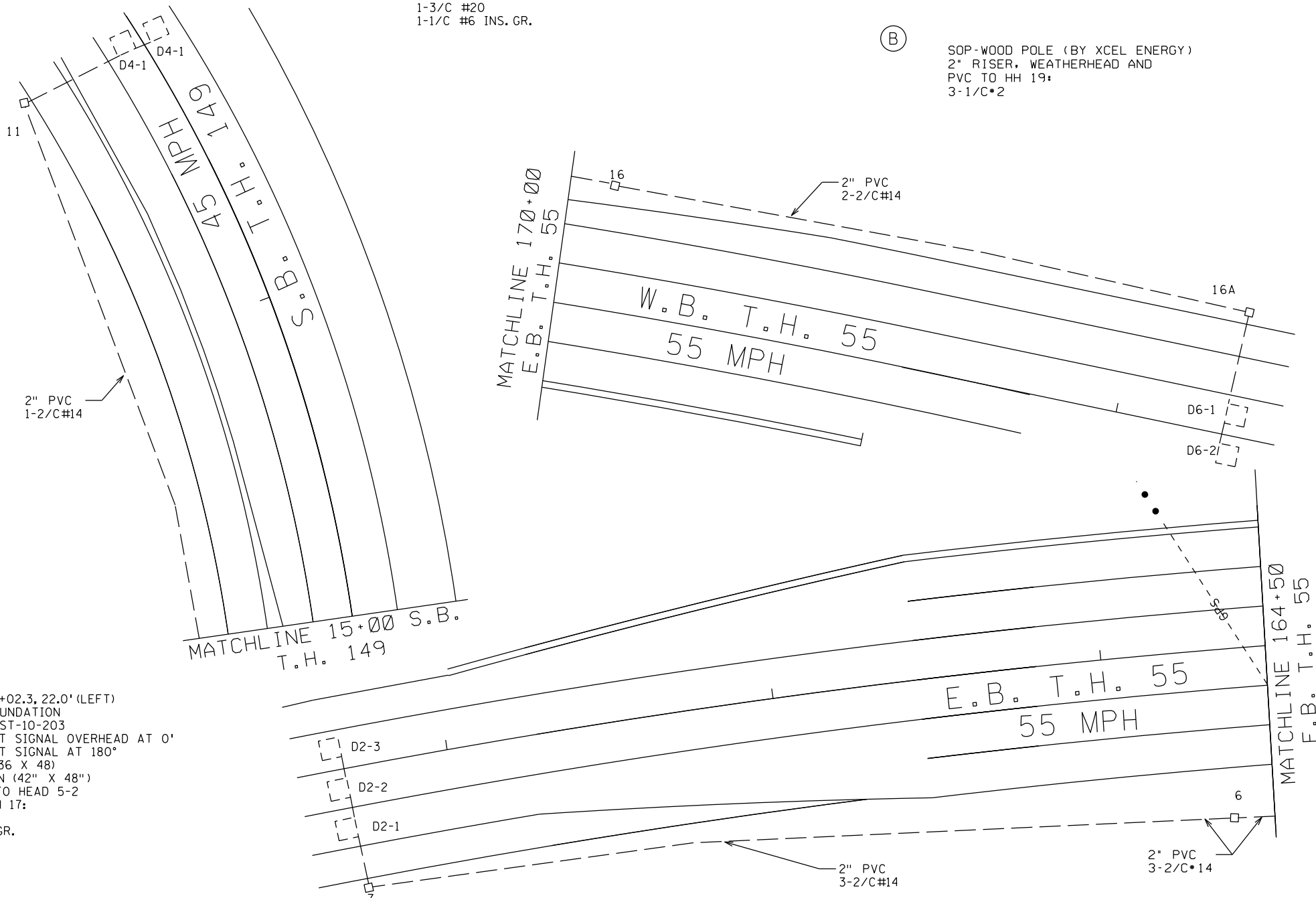
- ⑥ EQUIPMENT PAD (SEE DETAIL SHEET)  
SERVICE CABINET (SSB)  
CONTROLLER AND CABINET)  
2-4" PVC TO HH 1:  
4-12/C #14  
2-6/C #14  
3-4/C #14  
2-3/C #14  
16-2/C #14  
2-3/C #20  
2-1/C #6 INS. GR.  
1-COAXIAL CABLE  
1-CAT 6 CABLE  
1-3/C #14 (CAMERA POWER)  
2-4" PVC TO HH 18:  
4-12/C #14  
3-6/C #14  
1-4/C #14  
2-3/C #14  
8-2/C #14  
2-3/C #20  
1-1/C #6 INS. GR.

- 1-2" AND 1-3" PVC STUBBED OUT (CAPPED BOTH ENDS)  
3/4" PVC STUBBED OUT (FOR TELEPHONE LINE)

- CONTROLLER CABINET TO TMS VAULT  
1.5" PVC  
1-6SM FO PIGTAIL

- CONTROLLER CABINET TO SERVICE CABINET:  
2" PVC  
2-1/C #6  
1-1/C #6 INS. GR.  
CONTROLLER CABINET TO SERVICE CABINET (COMMS):  
2" PVC  
1-6PR #19  
SERVICE CABINET TO HH 19:  
2" PVC  
3-1/C #2  
SERVICE CABINET TO HH 1:  
2" PVC  
4-3/C #14 (LUM)  
HH 18 TO HH 1:  
2" PVC  
2-3/C #14 (LUM)

- ⑦ 55EB STA. 168+02.3, 22.0' (LEFT)  
PA85 POLE FOUNDATION  
TYPE PA85-AHST-10-203  
1-ANGLE MOUNT SIGNAL OVERHEAD AT 0'  
1-ANGLE MOUNT SIGNAL AT 180°  
1-R4-7 SIGN (36 X 48)  
1-R10-X12 SIGN (42" X 48")  
ADJACENT TO HEAD 5-2  
3" PVC TO HH 17:  
2-6/C #14  
1-1/C #6 INS. GR.



DISTRICT #: \$@DISTRICT@  
PLOT NAME: \$\$\$@PLOT\$NAME\$\$\$  
PATH & FILENAME: \$\$\$@PATH\$FILENAME\$\$\$

BY	DATE	REVISIONS
EJA	12-16-14	AS-BUILTS OF SP 1905-95 AND 8825-388
MAS	6-24-15	ADDED TMS FIBER OPTIC FROM SP 8825-388

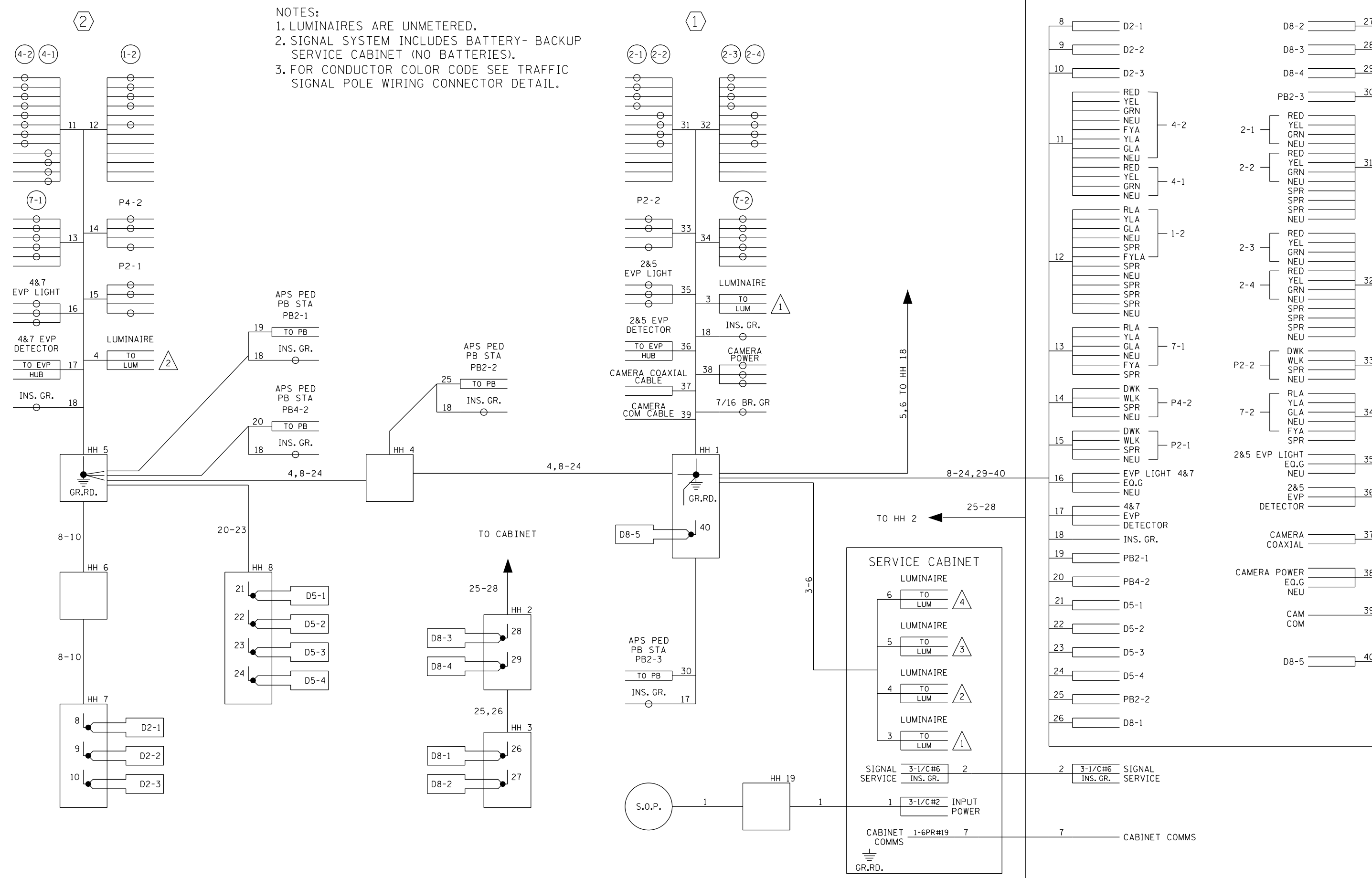
SYSTEM ID: 20925	T.E. 6030
METER ADDRESS: 3261	HIGHWAY 55
MASTER ID:	T.E.

MATCHLINE LAYOUT AND POLE NOTES  
T.H. 55 AT T.H. 149, NORTH JUNCTION  
IN EAGAN, DAKOTA COUNTY

CERTIFIED BY: <i>Michael P. Lubinsky</i>	LIC. NO. 19863	DATE: 1/16/14
(T.H. 55)	SHEET NO. 2 OF 5 SHEETS	

PLOTTED/REVISED: \$\$\$@DATE@\$\$\$

DISTRICT #: \$@DISTRICT@  
PLOT NAME: \$\$\$@PLOT\$NAME@\$\$  
PATH & FILENAME: \$\$\$@PATH\$FILENAME@\$\$\$



NOTES:  
 1. LUMINAIRES ARE UNMETERED.  
 2. SIGNAL SYSTEM INCLUDES BATTERY- BACKUP SERVICE CABINET (NO BATTERIES).  
 3. FOR CONDUCTOR COLOR CODE SEE TRAFFIC SIGNAL POLE WIRING CONNECTOR DETAIL.

CONTROLLER CABINET

SERVICE CABINET

BY	DATE	REVISIONS
EJA	12-16-14	AS-BUILTS OF SP 1905-95 AND 8825-388

SYSTEM ID: 20925 T.E. 6030  
 METER ADDRESS: 3261 HIGHWAY 55  
 MASTER ID: T.E.

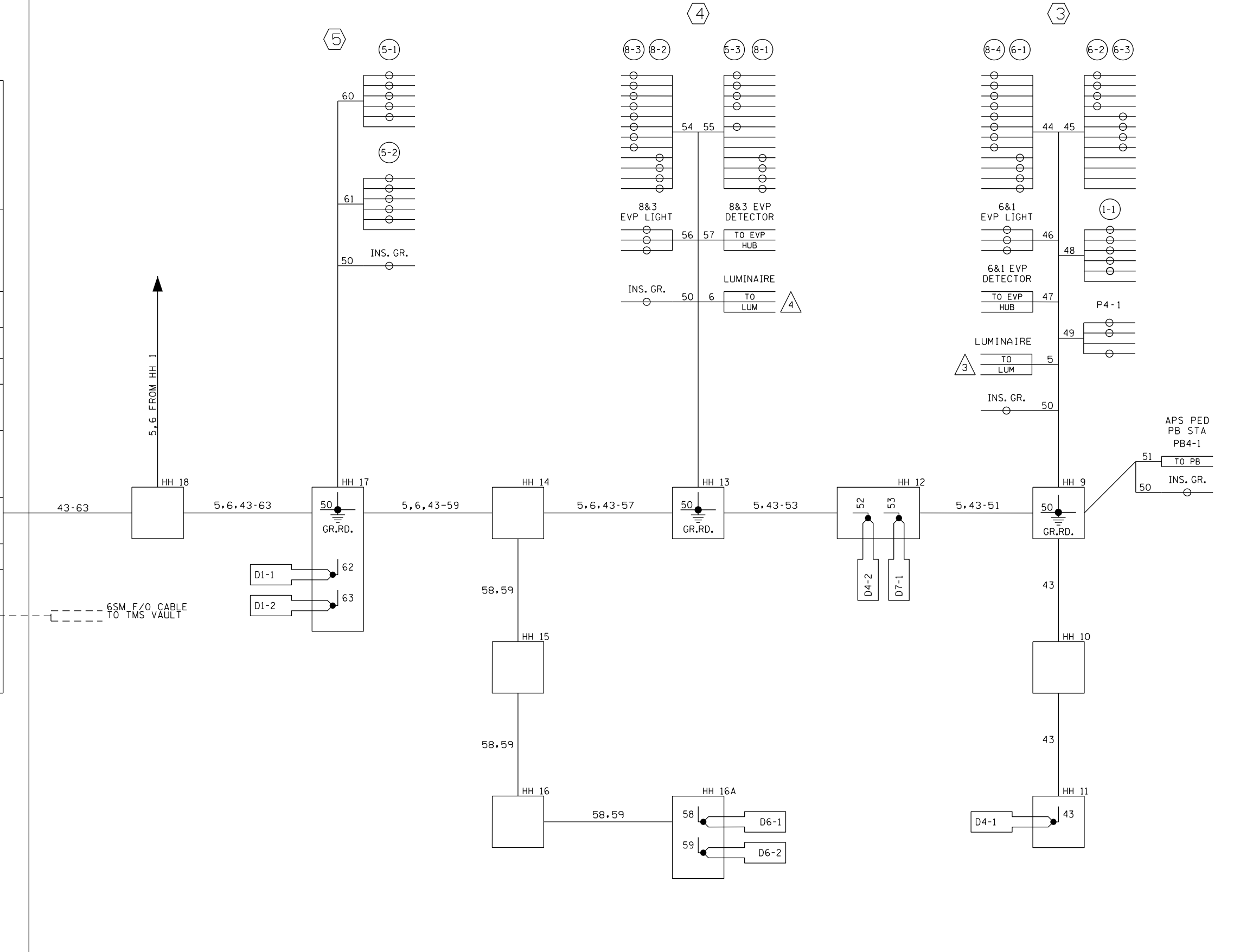
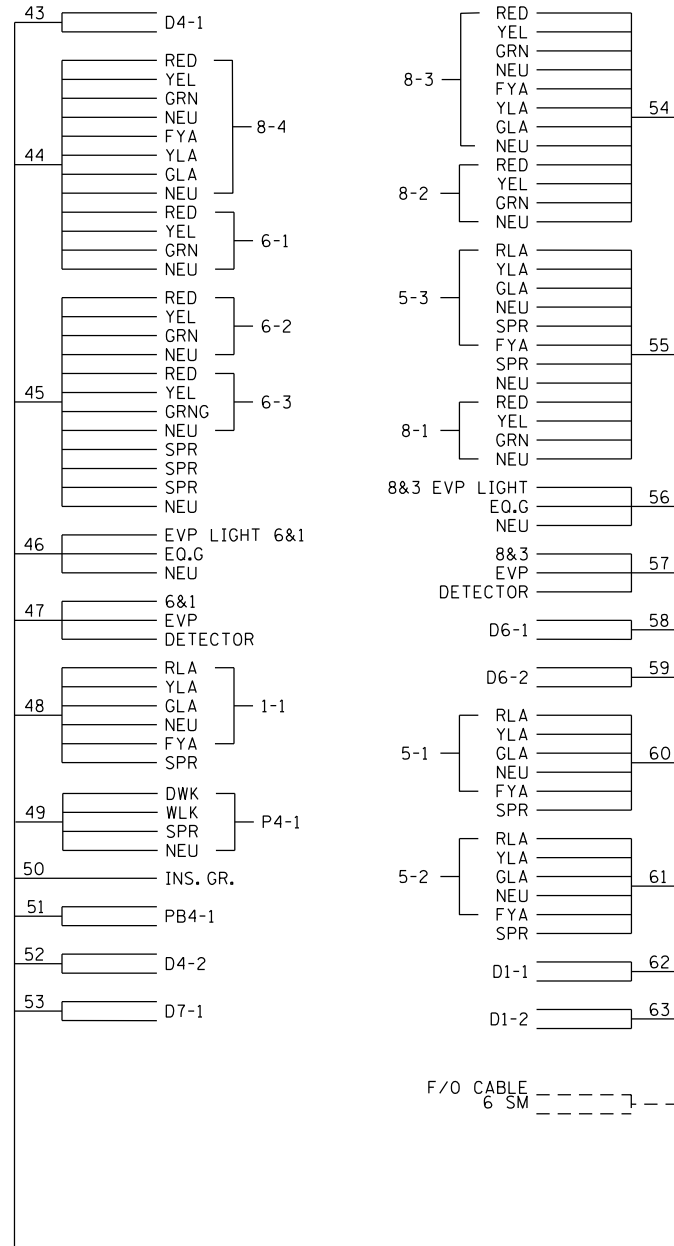
WIRING DIAGRAM (1 OF 2)  
 T.H. 55 AT T.H. 149, NORTH JUNCTION  
 IN EAGAN, DAKOTA COUNTY

CERTIFIED BY: *Michael P. Lubinsky*  
 (T.H. 55) LICENSED PROFESSIONAL ENGINEER LIC. NO. 19863 DATE: 1/16/14  
 DRAWN BY: MAS CKD BY: GAK DATE: 1/10/14  
 SHEET NO. 3 OF 5 SHEETS



# CONTROLLER CABINET

PLOTTED/REVISED: \$\$\$@DATE@\$\$\$\$



NOTES:  
 1. LUMINAIRES ARE UNMETERED.  
 2. SIGNAL SYSTEM INCLUDES BATTERY- BACKUP SERVICE CABINET (NO BATTERIES).  
 3. FOR CONDUCTOR COLOR CODE SEE TRAFFIC SIGNAL POLE WIRING CONNECTOR DETAIL.

DISTRICT #: \$@DISTRICT@  
 IPLOT NAME: \$\$\$@PLOT\$NAME@\$\$  
 PATH & FILENAME: \$\$\$@PATH\$FILENAME@\$\$\$\$

BY	DATE	REVISIONS	SYSTEM ID: 20925 T.E. 6030	WIRING DIAGRAM (2 OF 2)	DRAWN BY: MAS	CKD BY: GAK	DATE: 1/10/14
EJA	12-16-14	AS-BUILTS OF SP 1905-95 AND 8825-388	METER ADDRESS: 3261 HIGHWAY 55	T.H. 55 AT T.H. 149, NORTH JUNCTION	CERTIFIED BY <i>Michael P. Lubinsky</i> LIC. NO. 19863		DATE: 1/16/14
			MASTER ID: T.E.	IN EAGAN, DAKOTA COUNTY	(T.H. 55)		SHEET NO. 4 OF 5 SHEETS