

SIGNAL FACE CHART

FACE	R	Y	G
1-1, 1-2	←	←	←
2-1, 2-2, 2-3	○	○	○
4-1, 4-2, 4-3	○	○	○
6-1, 6-2, 6-3	○	○	○

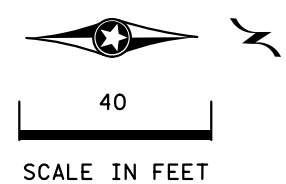
-ALL RED SIGNAL INDICATIONS ARE 12" LED
 -ALL YELLOW AND GREEN SIGNAL INDICATIONS ARE 12" GLASS
 -ALL SIGNAL HEADS HAVE BACKGROUND SHIELDS

4 PA100 POLE FOUNDATION
 TYPE PA100-A-40-D40-9 (DAVIT AT 350 DEG)
 3-ONE-WAY SIGNALS OVERHEAD AT 0', 11' AND 23'
 TYPE 10B POLE MOUNTED 180 DEG
 TYPE 30A POLE MOUNTED 90 DEG
 1-ONE WAY EVP DETECTOR AND CONFIRMATORY LIGHT (PHASES 1+6)
 LUMINAIRE-200W HPS
 1-PED PB AND SIGN
 EXTEND INTO HH 3:
 3" RSC
 2-12/C #12
 4-3/C #12
 1-3/C #12 (LUM)
 1-3/C #20

LOOP DETECTOR CHART

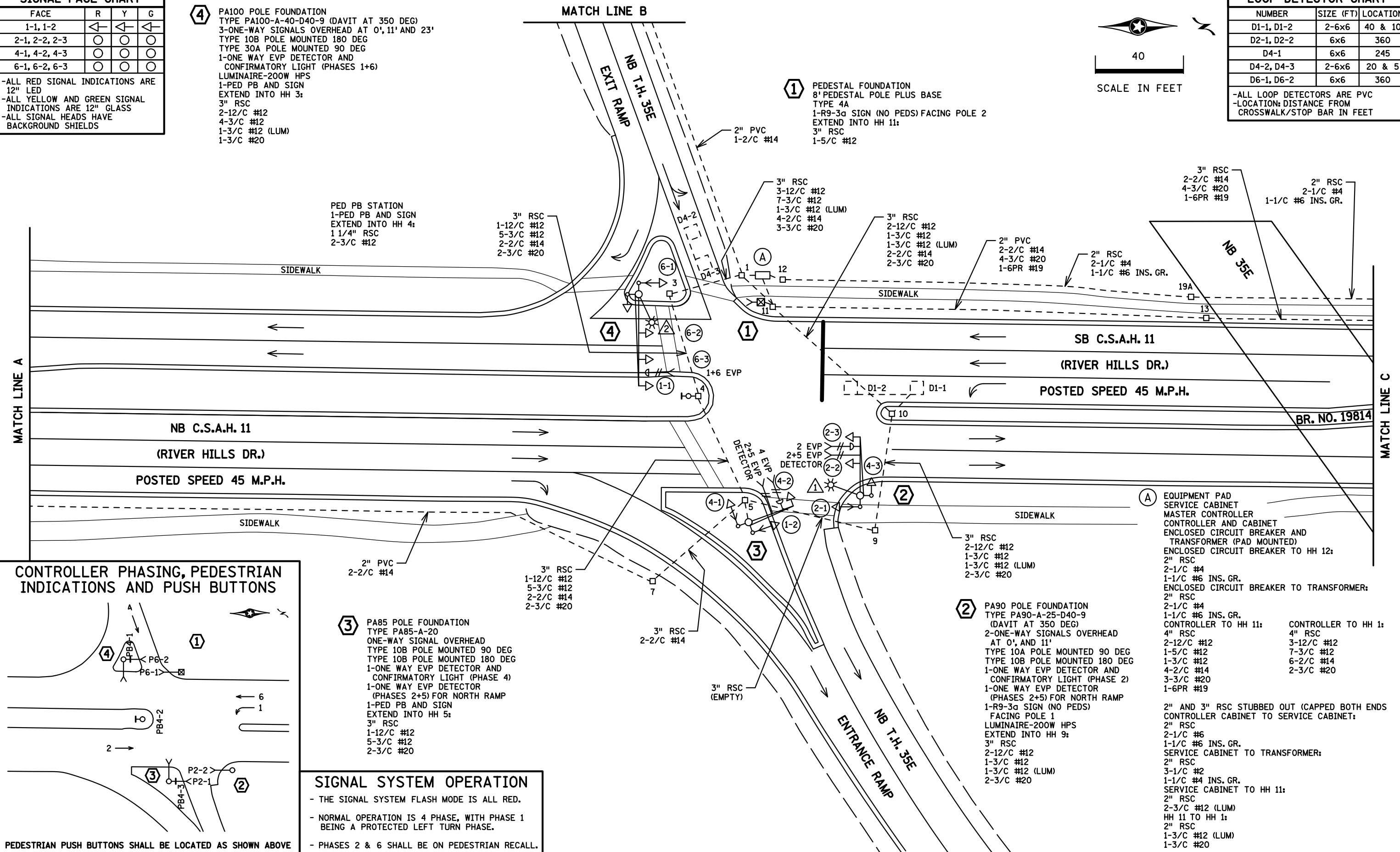
NUMBER	SIZE (FT)	LOCATION
D1-1, D1-2	2-6x6	40 & 10
D2-1, D2-2	6x6	360
D4-1	6x6	245
D4-2, D4-3	2-6x6	20 & 5
D6-1, D6-2	6x6	360

-ALL LOOP DETECTORS ARE PVC
 -LOCATION: DISTANCE FROM CROSSWALK/STOP BAR IN FEET

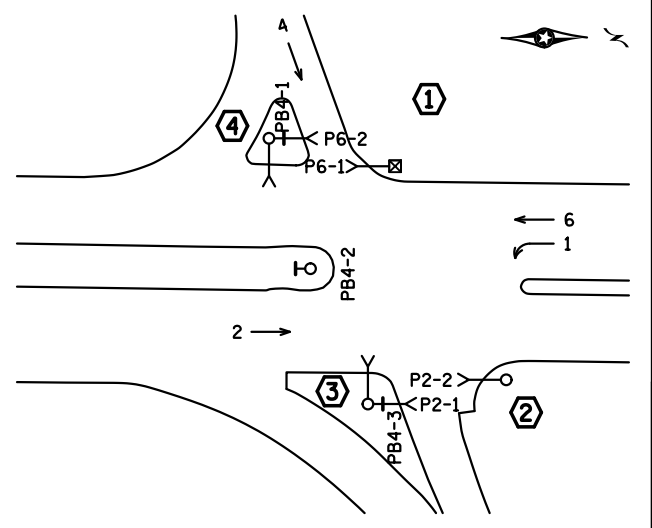


PLOTTED/REVISED: 3/19/2013

DISTRICT #: METRO
 IPLOT NAME: layout
 PATH & FILENAME: IP_PWP-d0783800V22219_sgl.dgn



CONTROLLER PHASING, PEDESTRIAN INDICATIONS AND PUSH BUTTONS

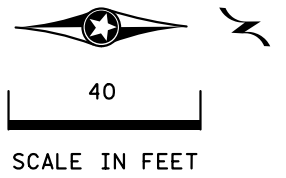


3 PA85 POLE FOUNDATION
 TYPE PA85-A-20
 ONE-WAY SIGNAL OVERHEAD
 TYPE 10B POLE MOUNTED 90 DEG
 TYPE 10B POLE MOUNTED 180 DEG
 1-ONE WAY EVP DETECTOR AND CONFIRMATORY LIGHT (PHASE 4)
 1-ONE WAY EVP DETECTOR (PHASES 2+5) FOR NORTH RAMP
 1-PED PB AND SIGN
 EXTEND INTO HH 5:
 3" RSC
 1-12/C #12
 5-3/C #12
 2-2/C #14
 2-3/C #20

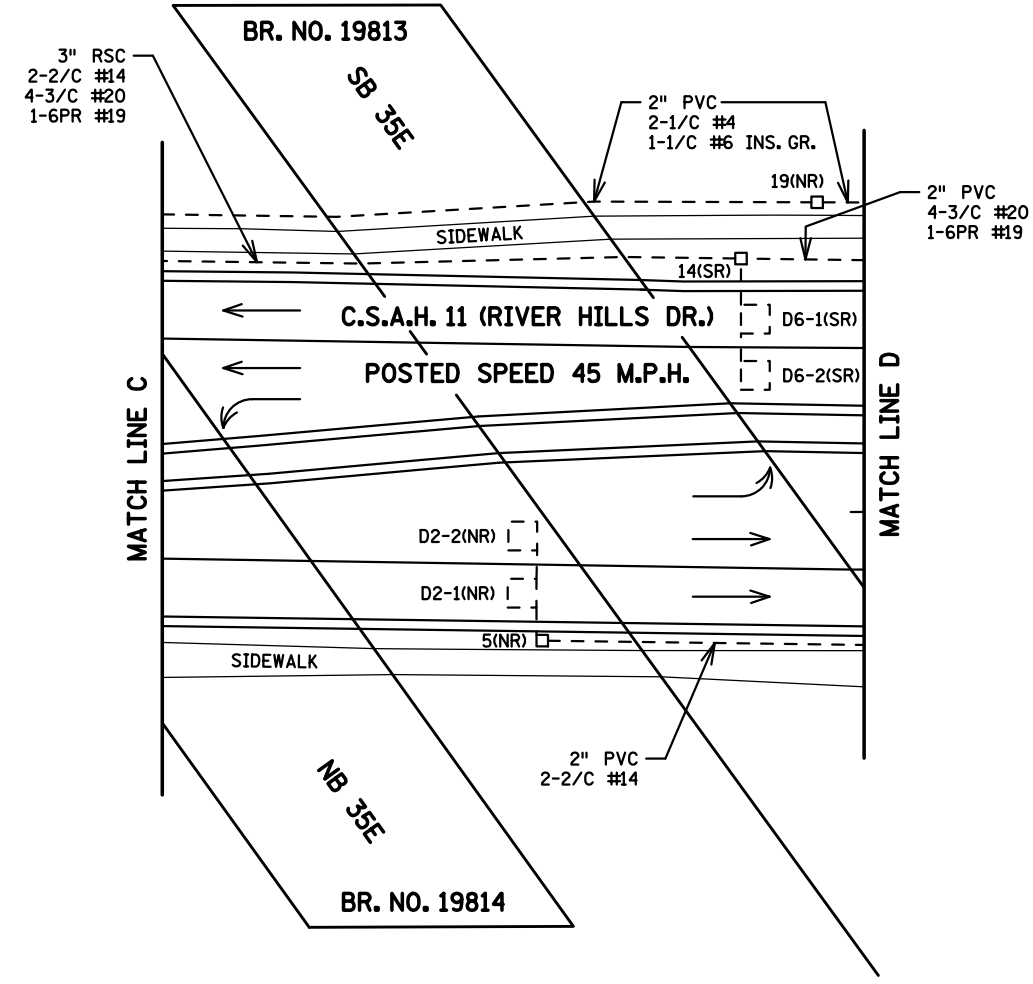
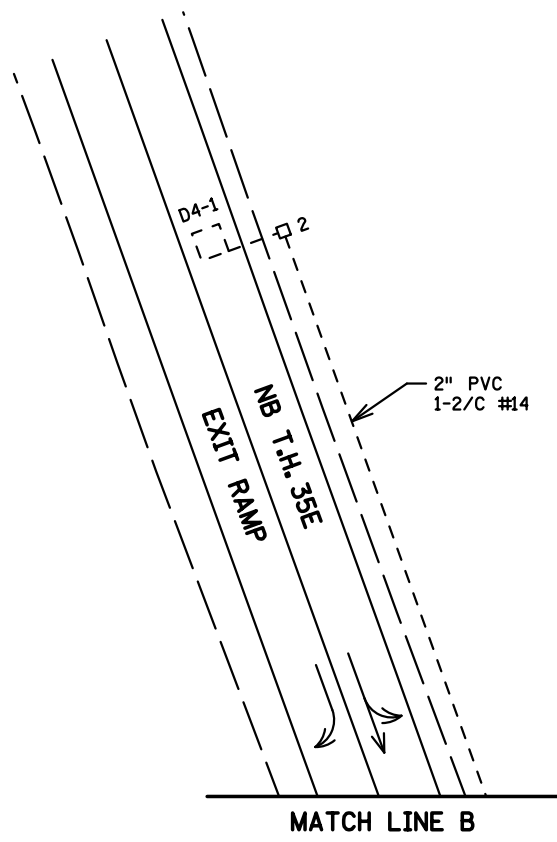
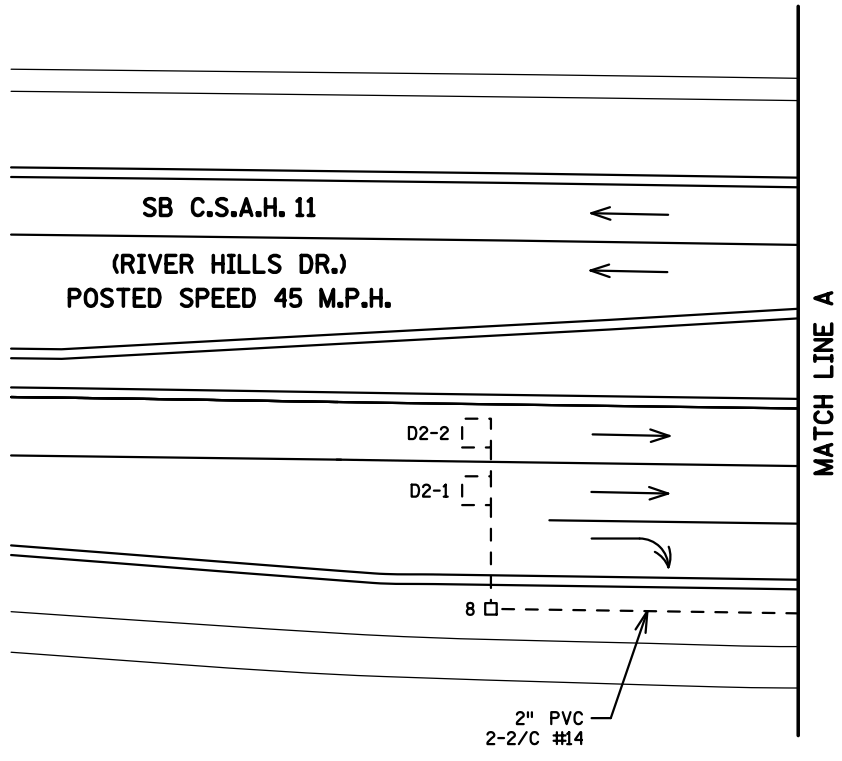
SIGNAL SYSTEM OPERATION
 - THE SIGNAL SYSTEM FLASH MODE IS ALL RED.
 - NORMAL OPERATION IS 4 PHASE, WITH PHASE 1 BEING A PROTECTED LEFT TURN PHASE.
 - PHASES 2 & 6 SHALL BE ON PEDESTRIAN RECALL.

PEDESTRIAN PUSH BUTTONS SHALL BE LOCATED AS SHOWN ABOVE

BY: GDS	DATE: 03-18-13	REVISIONS: AS BUILT OF 1982-125	SYSTEM ID: 22219	T.E.	INTERSECTION LAYOUT TRAFFIC CONTROL SIGNAL SYSTEM T.H. 35E AT C.S.A.H. 11 (RIVER HILLS DR.) S. RAMP IN BURNSVILLE & APPLE VALLEY, DAKOTA COUNTY	S.A.P. NO.	DRAWN BY:	CKD BY:	DATE:
			METER ADDRESS: 13550 COUNTY ROAD 11	T.E.		CERTIFIED BY:	LIC. NO.:	DATE:	
			MASTER ID: 22221			STATE PROJ. NO.:	(T.H. 35E)	SHEET NO. 1 OF 3 SHEETS	



PLOTTED/REVISED: 3/19/2013



DISTRICT #: METRO
 IPLOT NAME: match lines
 PATH & FILENAME: IP_PWP-d0783800\T22219_sgl.dgn

BY	DATE	REVISIONS	SYSTEM ID: 22219	T.E.	S.A.P. NO.	DRAWN BY:	CKD BY:	DATE:
GDS	03-18-13	AS BUILT OF 1982-125	METER ADDRESS: 13550 COUNTY ROAD 11		CERTIFIED BY _____	LIC. NO. _____	DATE: _____	
			MASTER ID: 22221	T.E.	STATE PROJ. NO.	(T.H. 35E)	SHEET NO. 2 OF 3 SHEETS	

**MATCH LINES LAYOUT
 TRAFFIC CONTROL SIGNAL SYSTEM
 T.H. 35E AT C.S.A.H. 11 (RIVER HILLS DR.) S. RAMP
 IN BURNSVILLE & APPLE VALLEY, DAKOTA COUNTY**

