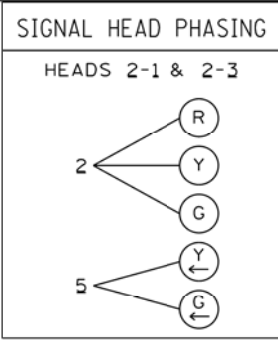


PLOTTED/REVISED: \$\$\$@DATE@\$\$\$

SIGNAL FACE CHART					
FACE	R	Y	G	Y	G
2-2	○	○	○		
2-1,2-3	○	○	○	←	←
4-1,4-2,4-3	○	○	○		
6-1,6-2	○	○	○		



PVC LOOP DETECTOR CHART

NUMBER	SIZE (FT)	LOCATION
D2-1, D6-1	2-6x6	120'
D4-1	3-6x6	250'
D4-2	3-6x6	120'
D4-3, D4-4	2-6x6	5', 20'
D4-5, D4-6	6x20	5'
D5-1	2-6x6	5', 20'
D5-2	2-6x6	-20', 0'

-LOCATION: DISTANCE FROM CROSSWALK/STOP BAR IN FEET

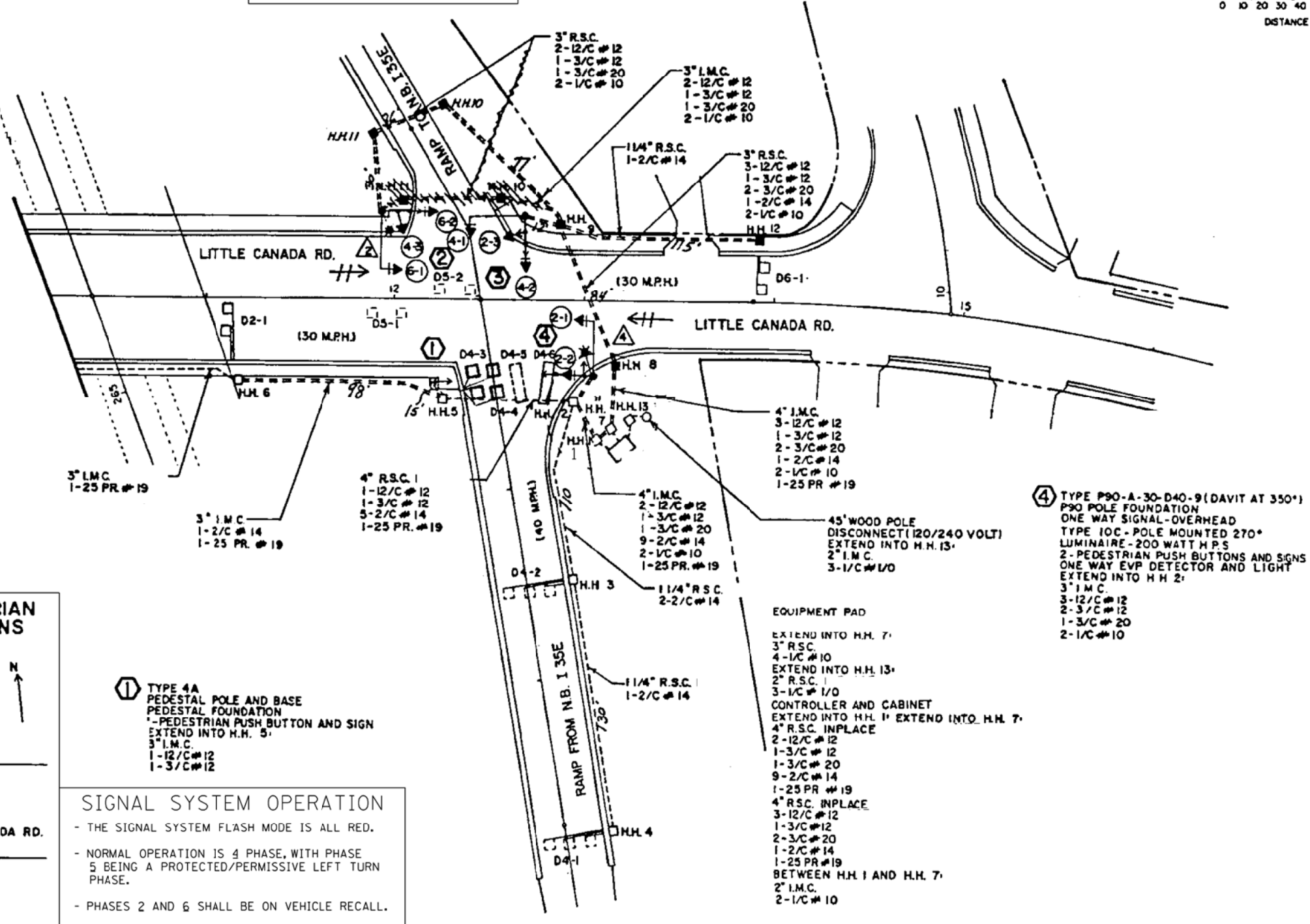
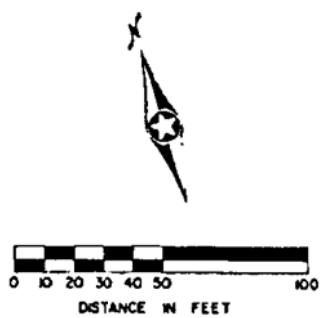
③ TYPE P80-A-30
P80 POLE FOUNDATION
ONE WAY SIGNAL - OVERHEAD
TYPE 20C - POLE MOUNTED 270°
2 - PEDESTRIAN PUSH BUTTONS AND SIGNS
EXTEND INTO H.H. 9:
3" I.M.C.
3-12/C #12
2-3/C #12
1-3/C #20

NOTES:

1) ALL PEDESTRIAN INDICATIONS ARE 9" X 9".

2) ALL SIGNAL FACES HAVE BACKGROUND SHIELDS EXCEPT FACE NO.'S 2-3 AND 4-3.

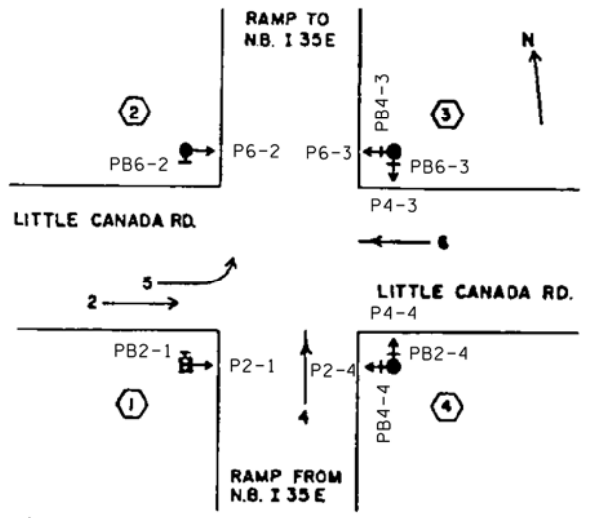
3) ALL SIGNAL FACES ARE 12" 3 SECTION R-Y-G EXCEPT FACE NO.'S 2-1 AND 2-3 WHICH ARE 12" 5 SECTION R-Y-G YLTA-GLTA.



② TYPE P90-A-30-D40-9 (DAVIT AT 350°)
P90 POLE FOUNDATION
ONE WAY SIGNAL - OVERHEAD
TYPE 20B - POLE MOUNTED 270°
LUMINAIRE - 200 WATT H.P.S.
1 - PEDESTRIAN PUSH BUTTON AND SIGN
ONE WAY EVP DETECTOR AND LIGHT
EXTEND INTO H.H. 11:
3" I.M.C.
2-12/C #12
1-3/C #12
1-3/C #20
2-1/C #10

④ TYPE P90-A-30-D40-9 (DAVIT AT 350°)
P90 POLE FOUNDATION
ONE WAY SIGNAL - OVERHEAD
TYPE 10C - POLE MOUNTED 270°
LUMINAIRE - 200 WATT H.P.S.
2 - PEDESTRIAN PUSH BUTTONS AND SIGNS
ONE WAY EVP DETECTOR AND LIGHT
EXTEND INTO H.H. 2:
3" I.M.C.
3-12/C #12
2-3/C #12
1-3/C #20
2-1/C #10

CONTROLLER PHASING, PEDESTRIAN INDICATIONS AND PUSH BUTTONS



① TYPE 4A
PEDESTAL POLE AND BASE
PEDESTAL FOUNDATION
1 - PEDESTRIAN PUSH BUTTON AND SIGN
EXTEND INTO H.H. 5:
3" I.M.C.
1-12/C #12
1-3/C #12

SIGNAL SYSTEM OPERATION

- THE SIGNAL SYSTEM FLASH MODE IS ALL RED.
- NORMAL OPERATION IS 4 PHASE, WITH PHASE 5 BEING A PROTECTED/PERMISSIVE LEFT TURN PHASE.
- PHASES 2 AND 6 SHALL BE ON VEHICLE RECALL.

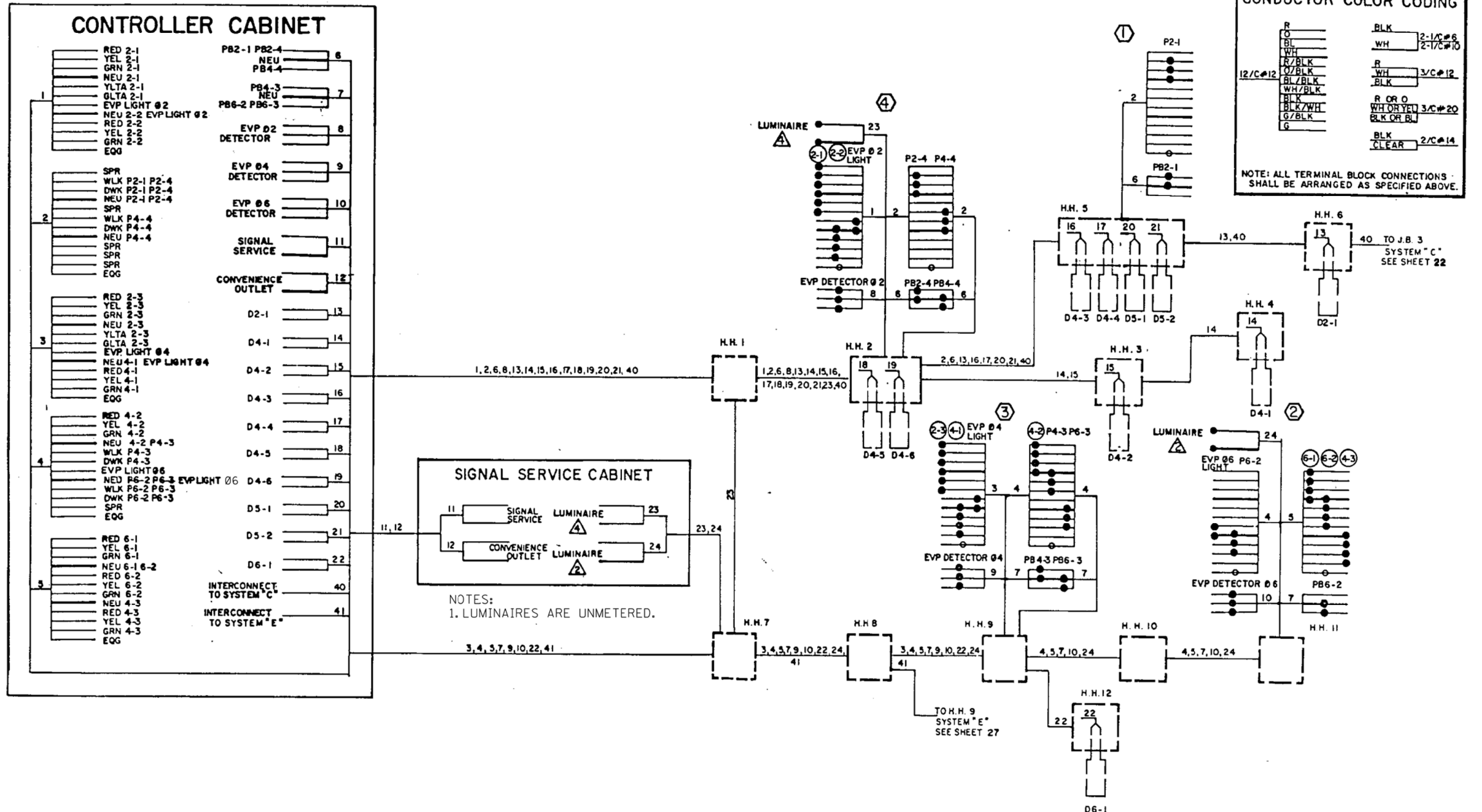
FIELD CHANGES AT MN/DOT BY GDS 8-2-2005:
1) LOOPS D4-3 AND D4-4 REPLACED WITH 2-6x6 PVC LOOPS BY MESU ON 7-30-1996.
2) LOOPS D5-1 AND D5-2 REPLACED WITH 2-6x6 PVC LOOPS BY MESU ON 7-19-1999.

PEDESTRIAN PUSH BUTTONS SHALL BE LOCATED AS SHOWN ABOVE.

DISTRICT #: \$@DISTRICT@
PLOT NAME: \$\$\$@PLOT\$NAME@
PATH & FILENAME: \$\$\$@PATH\$FILENAME@\$\$\$

BY	DATE	REVISIONS	SYSTEM ID: 20566	INTERSECTION LAYOUT	S.A.P. NO.	DRAWN BY: MAS	CKD BY: EJA	DATE: 10-21-08
MAS	10-20-08	AS-BUILT PB2-1, 2-4, 6-2 AND 6-3 ADDED	METER ADDRESS: 300 LITTLE CANADA RD., E.	I35E AT CSAH 21 (LITTLE CANADA RD.)	CERTIFIED BY _____	LIC. NO. _____	DATE: _____	
EJA	05-17-13	CORRECTED PLAN		EAST RAMPS	STATE PROJ. NO.			SHEET NO. 1 OF 2 SHEETS
				IN LITTLE CANADA, RAMSEY COUNTY				

DISTRICT #: \$DISTRICT\$
 PLOT NAME: \$PLOTNAME\$
 PATH & FILENAME: \$PATHFILENAME\$
 PLOTTED/REVISED: \$\$\$DATE\$\$\$



BY	DATE	REVISIONS	SYSTEM ID: 20566	FIELD WIRING DIAGRAM	S.A.P. NO.	DRAWN BY: MAS	CKD BY: EJA	DATE: 10-21-08
MAS	10-20-08	AS-BUILT PB2=1,2=4,6=2 AND 6=3 ADDED	METER ADDRESS: 300_LITTLE_CANADA_RD., E.	135E AT CSAH 21 (LITTLE CANADA RD.)	CERTIFIED BY			
EJA	05-17-13	CORRECTED PLAN		EAST RAMPS	LICENSED PROFESSIONAL ENGINEER			
				IN LITTLE CANADA, RAMSEY COUNTY	STATE PROJ. NO.			SHEET NO. 2 OF 2 SHEETS