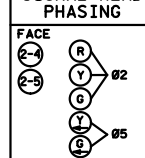


**PVC LOOP DETECTORS**

DESIGNATION	NO. OF LOOPS	LOCATION
D2-1	1	120'
D2-2	1	120'
D5-1	2	20', 50'
D5-2	2	5', 35'
D6-1, D6-2	1	120'
D8-1 (1)	1	400'
D8-2, D8-3, D8-4	1	120'
D8-5, D8-6	2	0', 15'
D8-7	2	-5', 10'

-LOCATION= DISTANCE FROM CROSSWALK/STOP LINE IN FEET  
 ① QUEUE DETECTOR

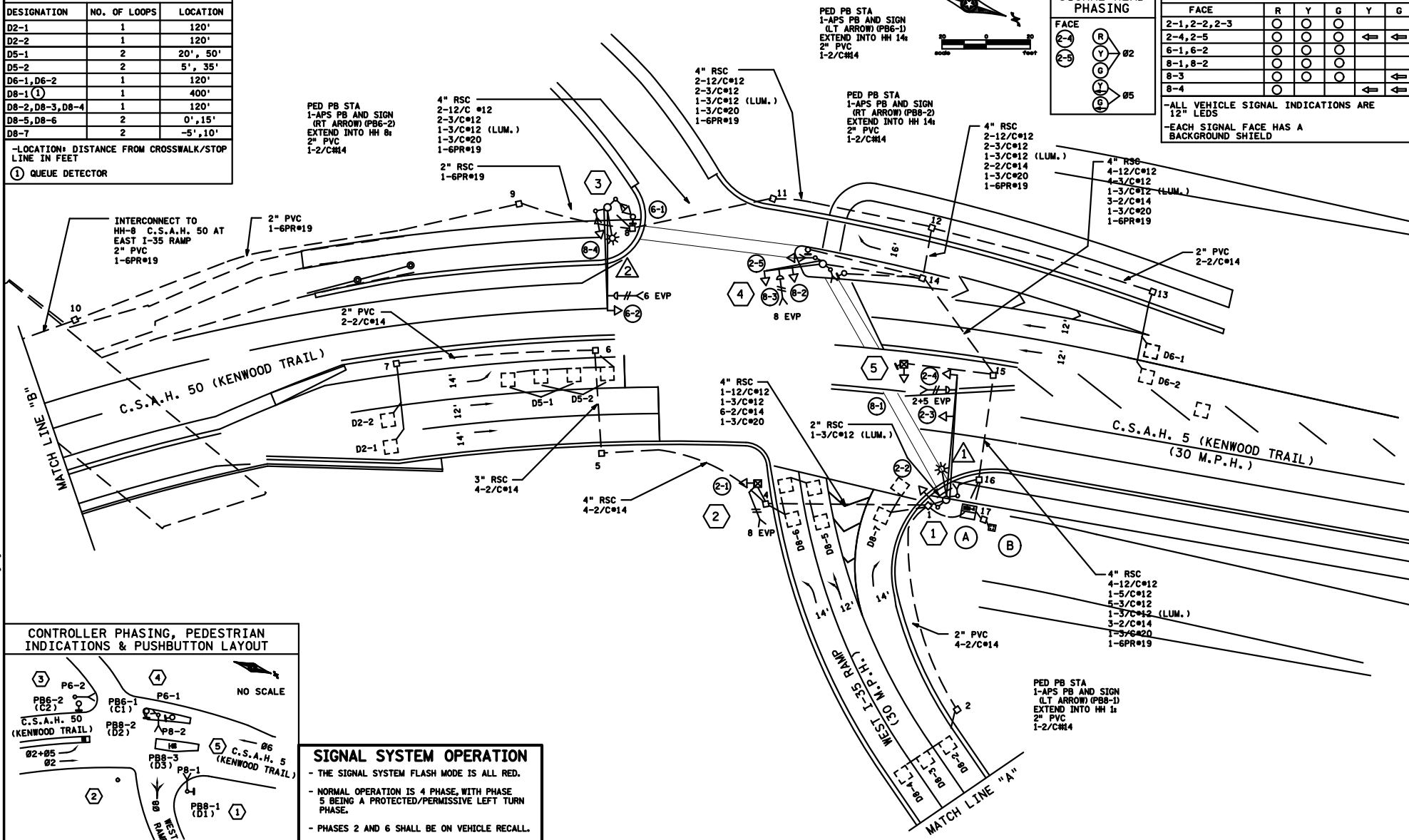
**SIGNAL HEAD PHASING**



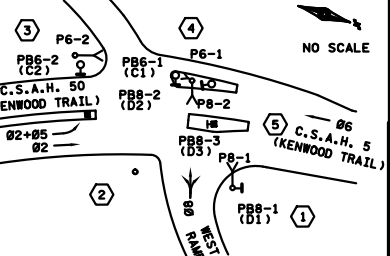
FACE	R	Y	G	Y	G
2-1, 2-2, 2-3	○	○	○		
2-4, 2-5	○	○	○	←	←
6-1, 6-2	○	○	○		
8-1, 8-2	○	○	○		
8-3	○	○	○		
8-4	○	○	○	←	←

-ALL VEHICLE SIGNAL INDICATIONS ARE 12" LEDS  
 -EACH SIGNAL FACE HAS A BACKGROUND SHIELD

PLOTTED/REVISED: 8/22/2014



**CONTROLLER PHASING, PEDESTRIAN INDICATIONS & PUSHBUTTON LAYOUT**



**SIGNAL SYSTEM OPERATION**

- THE SIGNAL SYSTEM FLASH MODE IS ALL RED.
- NORMAL OPERATION IS 4 PHASE, WITH PHASE 5 BEING A PROTECTED/PERMISSIVE LEFT TURN PHASE.
- PHASES 2 AND 6 SHALL BE ON VEHICLE RECALL.

DISTRICT #: METRO  
 I/PLOT NAME: layout  
 PATH & FILENAME: IP\_PWP-20780862T2051T\_spl.dgn

BY	DATE	REVISIONS
EJA	08-22-14	AS-BUILT OF SP 7080-51 APS & CD PEDS ADDED

SYSTEM ID: 20517	T.E. 5777
METER ADDRESS: 17296 KENWOOD TRAIL	
MASTER ID: 38243	T.E.

**INTERSECTION LAYOUT**  
 TH 35 AT C.S.A.H. 50 (KENWOOD TRAIL) /  
 CSAH 5 WEST RAMP  
 IN LAKEVILLE, DAKOTA COUNTY

S.A.P. NO.	DRAWN BY: SJK	CKD BY: EJA	DATE: 02-19-13
CERTIFIED BY: <i>Michael P. Sbrady</i>	LIC. NO. 19863	DATE: 03-21-13	
STATE PROJ. NO. (T.H.35)	SHEET NO. 1 OF 3 SHEETS		

PLOTTED/REVISED: 8/22/2014

DISTRICT #: METRO  
 IPLOT NAME: pole notes match lines  
 PATH & FILENAME: IP\_LWP-40780682T2051T\_sgl.dgn

1 PA100 POLE FOUNDATION  
 TYPE PA100-A-55-D40-9 (DAVIT AT 350 DEG)  
 LUMINAIRE-250 WATT H.P.S.  
 TYPE D SIGN  
 2-ONE WAY SIGNALS OVERHEAD AT 0 AND 17 FT  
 ONE WAY EVP DETECTOR AND CONFIRMATORY LIGHT (2+5)  
 R10-12 SIGN ADJACENT TO HEAD 2-4  
 ONE WAY SIGNAL AT 225 DEG  
 ONE WAY CD PED HEAD AT 45 DEG  
 1-APS PED PB BUTTON AND SIGN (PB8-1) (RT ARROW)  
 1-R9-3 SIGN (FACING POLE 2)  
 EXTEND INTO HH-1:  
 3" RSC  
 2-12/C#12  
 2-3/C#12  
 1-3/C#12 (LUM)  
 1-3/C#20

4 PA85 POLE FOUNDATION  
 TYPE PA85-A-25  
 TYPE D SIGN  
 2-ONE WAY SIGNALS OVERHEAD AT 0 AND 11 FT  
 ONE WAY EVP CONFIRMATORY LIGHT (8)  
 ONE WAY SIGNAL AT 45 DEG  
 2-ONE WAY CD PED HEADS AT 45 AND 225 DEG  
 EXTEND INTO HH-14:  
 3" RSC  
 2-12/C#12  
 2-3/C#12  
 1-2/C#14

2 PEDESTAL FOUNDATION  
 13' PEDESTAL (INCLUDES BASE)  
 1-PEDESTAL MOUNTED ONE WAY SIGNAL  
 ONE WAY EVP DETECTOR (PHASE 8)  
 1-R9-3(SIGN FACING POLE 3)  
 EXTEND INTO HH-4:  
 2" RSC  
 1-12/C#12  
 1-3/C#12  
 1-3/C#20

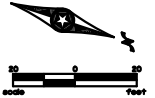
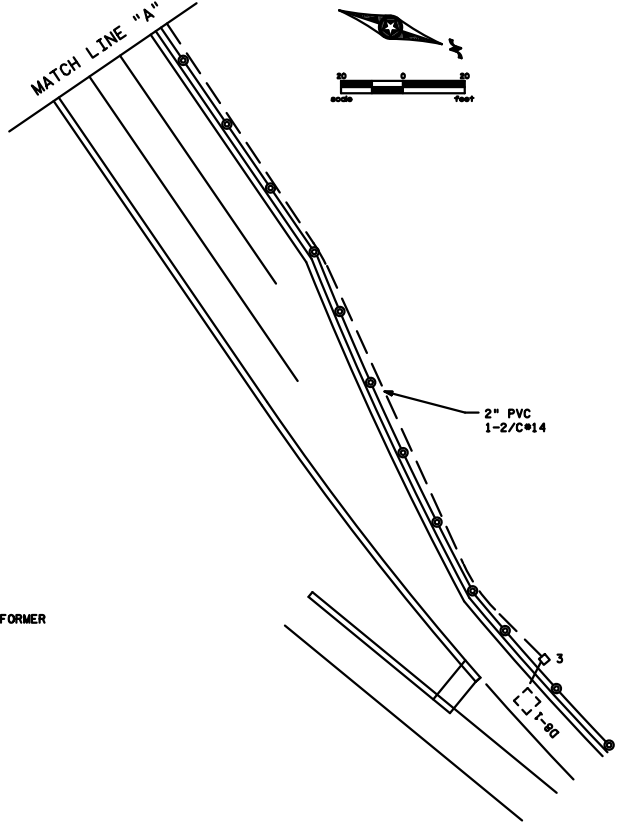
5 PEDESTAL FOUNDATION  
 13' PEDESTAL (INCLUDES BASE)  
 1-PEDESTAL MOUNTED ONE WAY SIGNAL  
 1-APS PED PB BUTTON AND SIGN (PB8-3) (DBL ARROW)  
 EXTEND INTO HH-15  
 2" RSC  
 1-5/C#12  
 1-3/C#12

3 PA100 POLE FOUNDATION  
 TYPE PA100-A-45-D40-9 (REVISIONS)  
 LUMINAIRE-250 WATT H.P.S.  
 TYPE D SIGN  
 ONE WAY SIGNAL OVERHEAD AT OFT  
 ONE WAY EVP DETECTOR AND CONFIRMATORY LIGHT (6)  
 2-ONE WAY SIGNALS AT 45 AND 225 DEG  
 ONE WAY CD PED HEAD AT 225 DEG  
 R9-3 SIGN (FACING POLE2)  
 EXTEND INTO HH-8:  
 3" RSC  
 2-12/C#12  
 2-3/C#12  
 1-3/C#12 (LUM)  
 1-3/C#20  
 1-2/C#14

A EQUIPMENT PAD - SEE DETAIL  
 CONTROLLER & CABINET  
 EXTEND 4" RSC INTO HH 1:  
 3-12/C#12  
 3-3/C#12  
 11-2/C#14  
 2-3/C#20  
 EXTEND 4" RSC INTO HH-16 WITH:  
 4-12/C#12  
 1-5/C#12  
 5-3/C#12  
 3-2/C#14  
 1-3/C#20  
 1-6PR#19

B SOURCE OF POWER  
 GROUND MOUNTED TRANSFORMER  
 2" RSC TO HH-17  
 3-1/C#2

3" RSC STUBBED OUT (THREADED AND CAPPED BOTH ENDS)  
 3/4" PVC STUBBED OUT (THREADED AND CAPPED BOTH ENDS)  
 2" RSC TO SERVICE CABINET  
 2-1/C#6  
 1-1/C#6 INS.GR.  
 SERVICE CABINET TO HH-16 WITH:  
 2" RSC  
 2-3/C#12 (LUM.)  
 SERVICE CABINET TO HH-17 WITH:  
 2" RSC  
 3-1/C#2

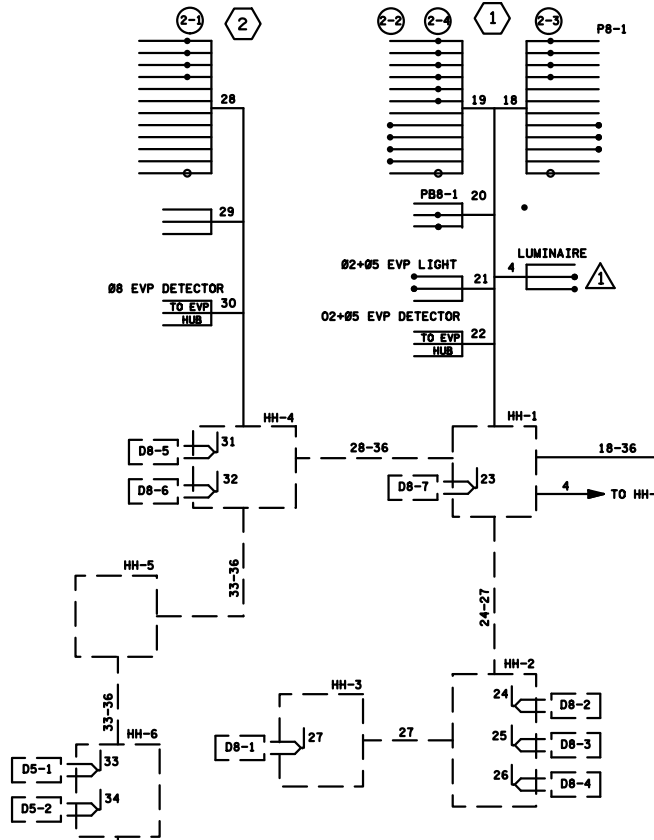


BY	DATE	REVISIONS
EJA	08-22-14	AS-BUILT OF SP 7080-51 APS & CD PEDS ADDED

SYSTEM ID: 20517	T.E. 5777
METER ADDRESS: 17296 KENWOOD TRAIL	
MASTER ID: 38243	T.E.

**MATCH LINES AND POLE NOTES**  
 TH 35 AT C.S.A.H. 50 (KENWOOD TRAIL)/  
 CSAH 5 WEST RAMP  
 IN LAKEVILLE, DAKOTA COUNTY

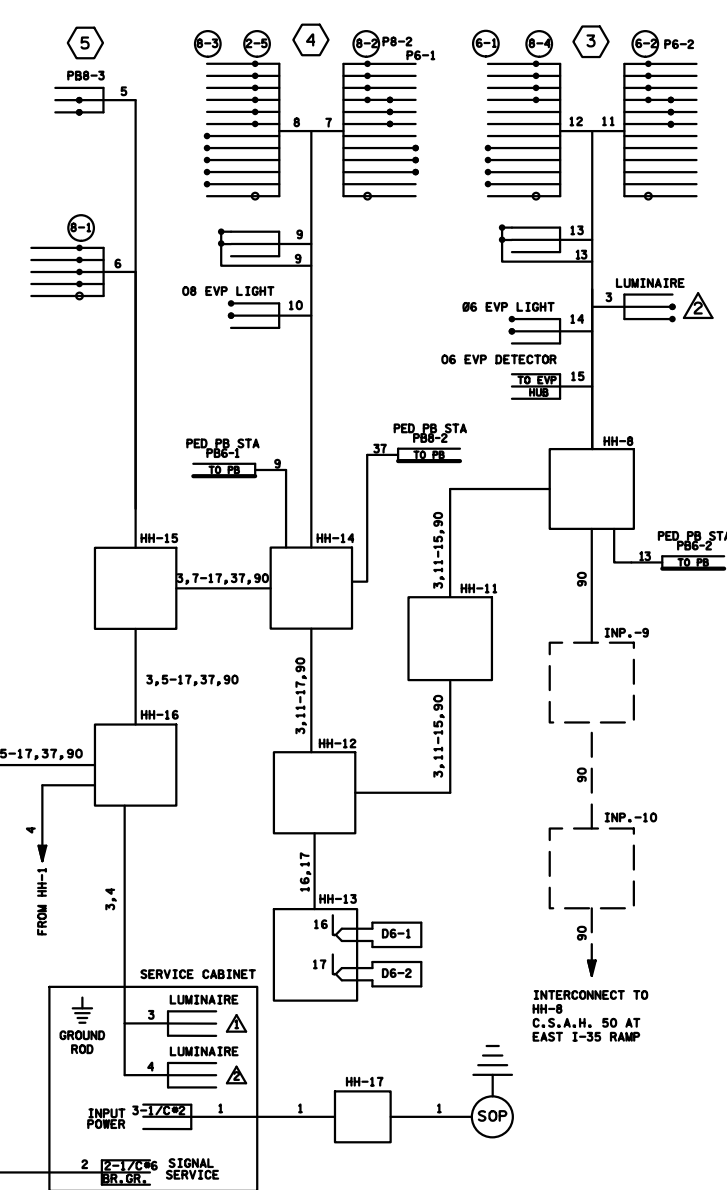
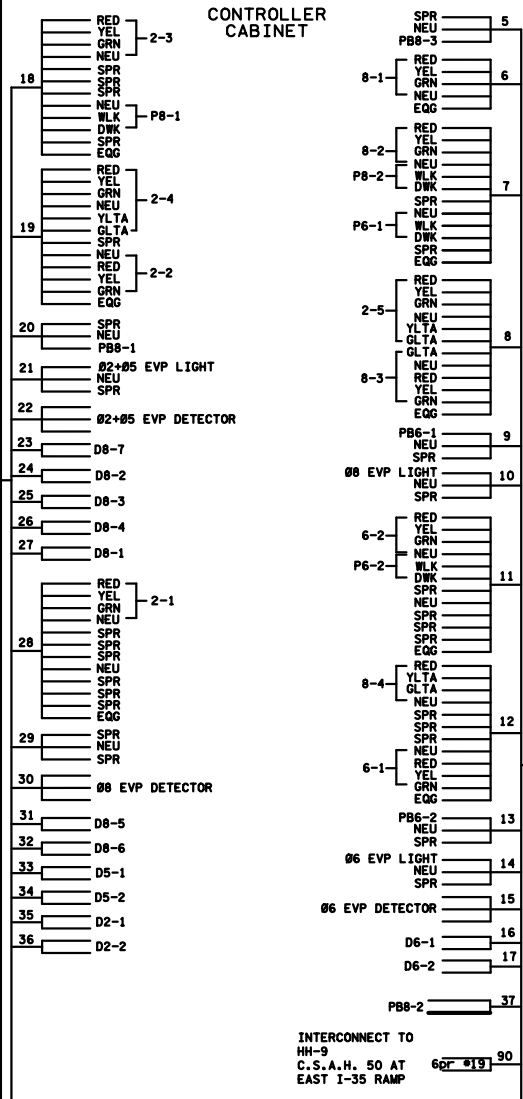
S.A.P. NO.	DRAWN BY: SJK	CKD BY: EJA	DATE: 02-19-13
CERTIFIED BY: <i>Michael P. Sbraly</i>	LIC. NO. 19863	DATE: 03-21-13	
STATE PROJ. NO.	(T.H.35)	SHEET NO.	2 OF 3 SHEETS



**CONDUCTOR COLOR CODING**

3/C*12	R	R	12/C*12
3/C*12	WH	BL	
(LUM)	BLK	WH	
3/C*20	R OR O	R/BLK	
	WH OR YEL	BL/BLK	
	BLK OR BL	WH/BLK	
		BLK	
2/C*14	BLK	BLK/WH	
	CLR	GR/BLK	
		C	
2-1/C*6	BLK	R	5/C*12
	WH	O	
		BL	
3-1/C*2	R	WH	
	WH	BLK	
	BLK	C	

NOTE: ALL TERMINAL BLOCK CONNECTIONS SHALL BE ARRANGED AS SPECIFIED ABOVE.



BY	DATE	REVISIONS	SYSTEM ID:	T.E.
EJA	08-22-14	AS-BUILT OF SP 7080-51 APS & CD PEDS ADDED	20517	5777
			METER ADDRESS: 17296 KENWOOD TRAIL	
			MASTER ID: 38243	T.E.

**WIRING DIAGRAM**  
 TH 35 AT C.S.A.H. 50 (KENWOOD TRAIL)/  
 CSAH 5 WEST RAMP  
 IN LAKEVILLE, DAKOTA COUNTY

S.A.P. NO.	DRAWN BY: SJK	CKD BY: EJA	DATE: 02-19-13
CERTIFIED BY: <i>Michael P. Sbraly</i>	L.I.C. NO. 19863	DATE: 03-21-13	
STATE PROJ. NO. (T.H.35) SHEET NO. 3 OF 3 SHEETS			