

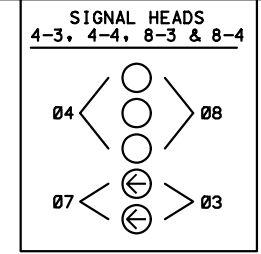
PLOTTED/REVISED: 28-JUL-2022

IPLOT NAME: layout PATH & FILENAME: Projects\DM_R05\01300000\Traffic\Signals\9172_126TH ST W\736133\T1736133.sgl.dgn

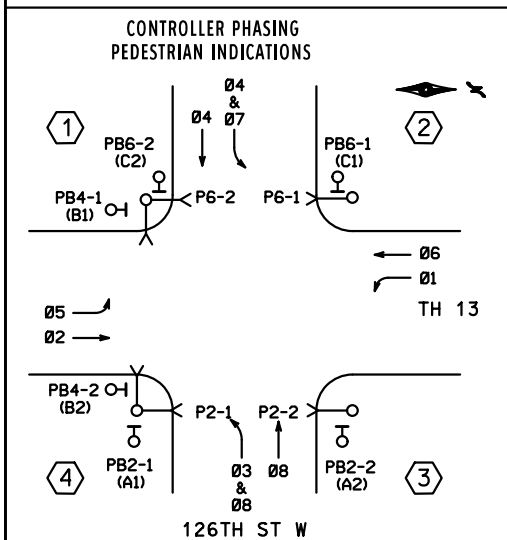
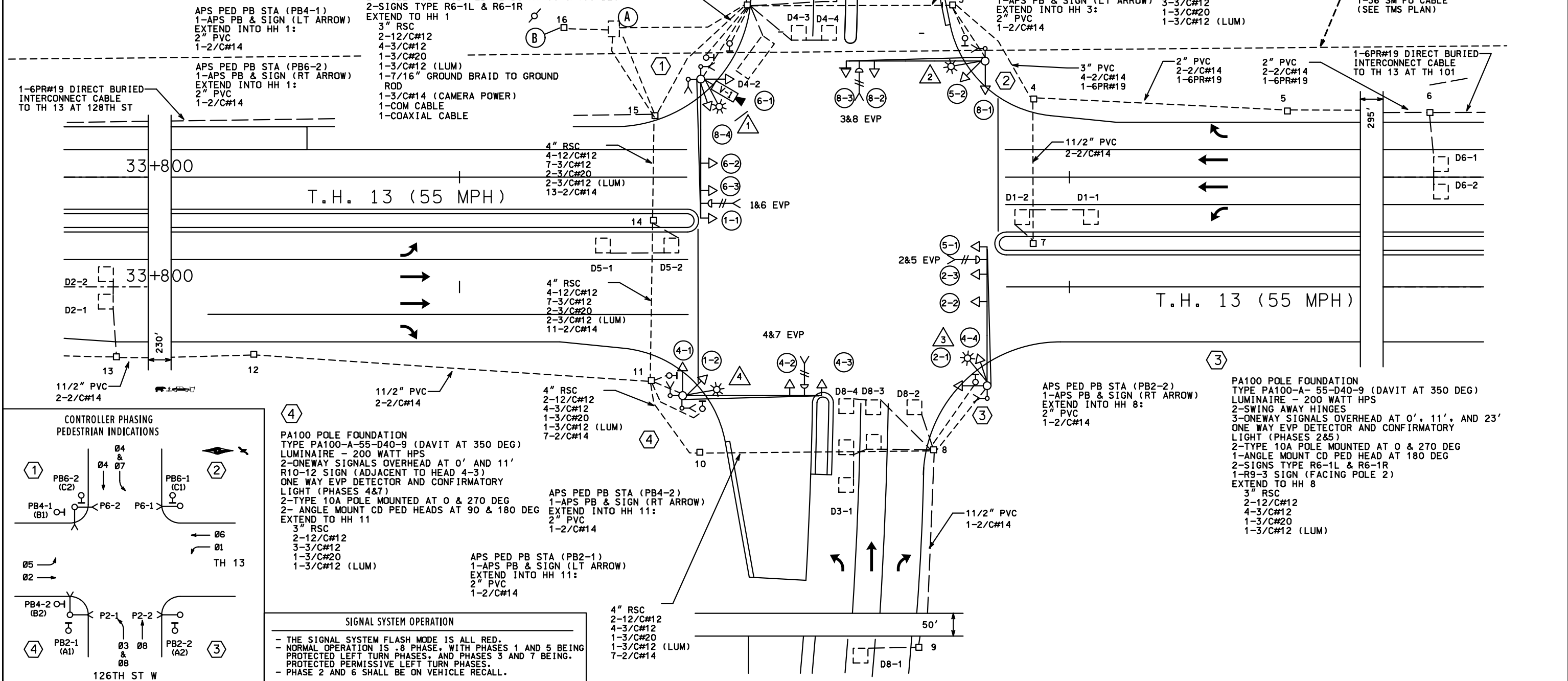
PVC LOOP DETECTOR CHART		
NUMBER	SIZE (FT)	LOCATION
D1-1 D1-2	6X6	10'&40'
D2-1 D2-2	6X6	475'
D3-1	2-6X6	AS-SHOWN
D4-1	6X6	180'
D4-2	6X15	AS-SHOWN
D4-3 D4-4	6X6	10'
D5-1 D5-2	6X6	10'&40'
D6-1 D6-2	6X6	475'
D7-1	6X15	50'
D8-1	6X6	180'
D8-2	6X6	AS-SHOWN
D8-3	2-6X6	AS-SHOWN
D8-4	6X6	AS-SHOWN

-LOCATION: DISTANCE FROM CROSSWALK/STOP BAR IN FEET

- (A) EQUIPMENT PAD (SEE DETAIL)
CONTROLLER AND CABINET
SERVICE CABINET (SEE DETAIL)
CONTROLLER CABINET TO HH 1
4" RSC
4-12/C#12
7-3/C#12
13-2/C#14
2-3/C#20
1-6PR#19
1-3/C#14 (CAMERA POWER)
1-COM CABLE
1-COAXIAL CABLE
CONTROLLER CABINET TO HH 15
4" RSC
4-12/C#12
7-3/C#12
13-2/C#14
1-6PR#19
2-3/C#20
- (B) S.O.P.
WOOD POLE AND TRANSFORMER
2" RSC TO SERVICE CABINET
3-1/C#4
- SERVICE CABINET TO CONTROLLER CABINET
1 1/2" RSC
2-1/C#6
1-1/C#6 INS GR
SERVICE CABINET TO HH 15
2" RSC
4-3/C#12 (LUM)
SERVICE CABINET TO HH 16
2" RSC
3-1/C#4



SIGNAL HEAD CHART						
FACE	R	Y	G	RLA	YLA	GLA
1-1						
1-2						
2-1						
2-2						
2-3						
4-1						
4-2						
4-3						
4-4						
5-1						
5-2						
6-1						
6-2						
8-1						
8-2						
8-3						
8-4						

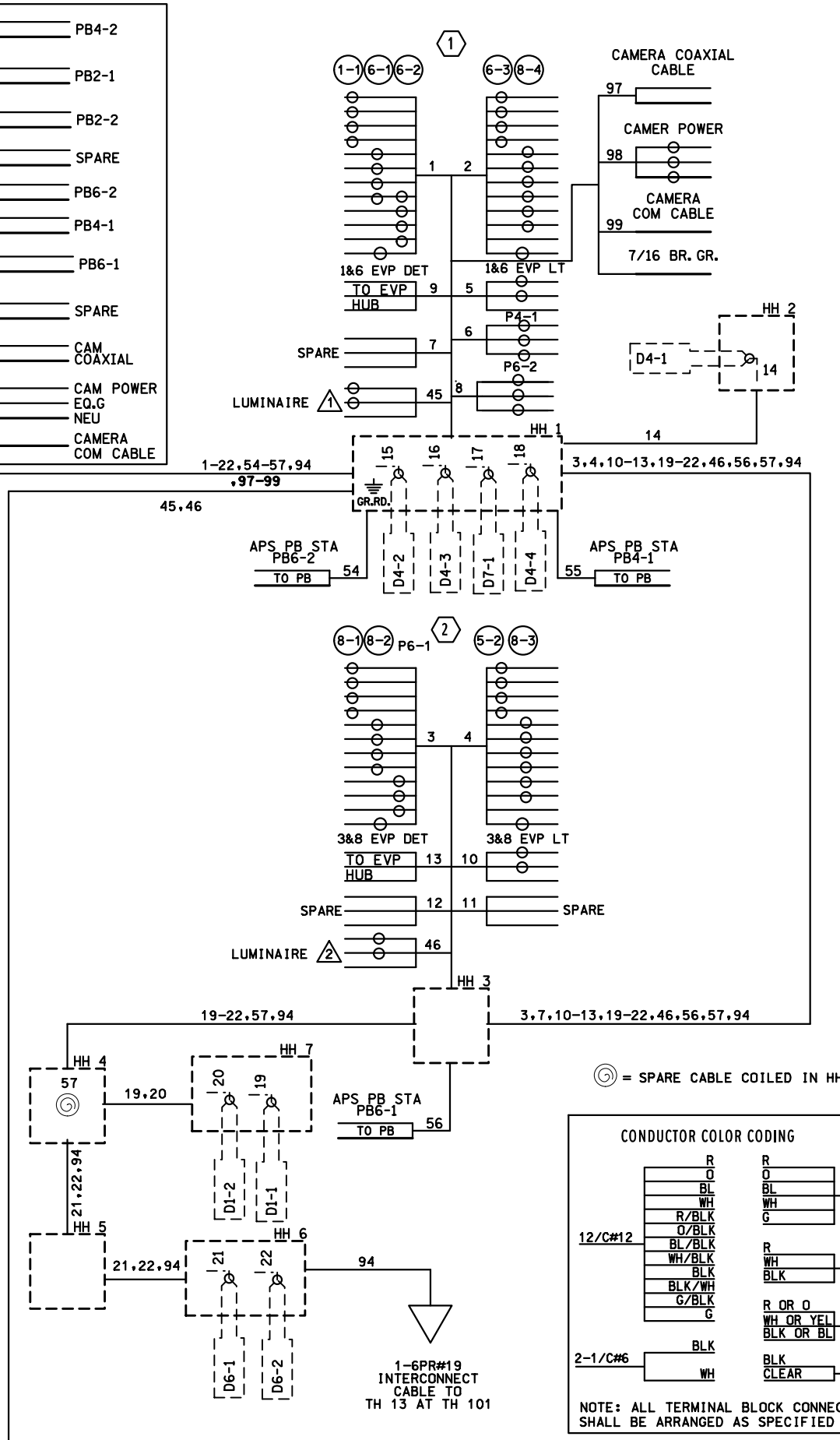
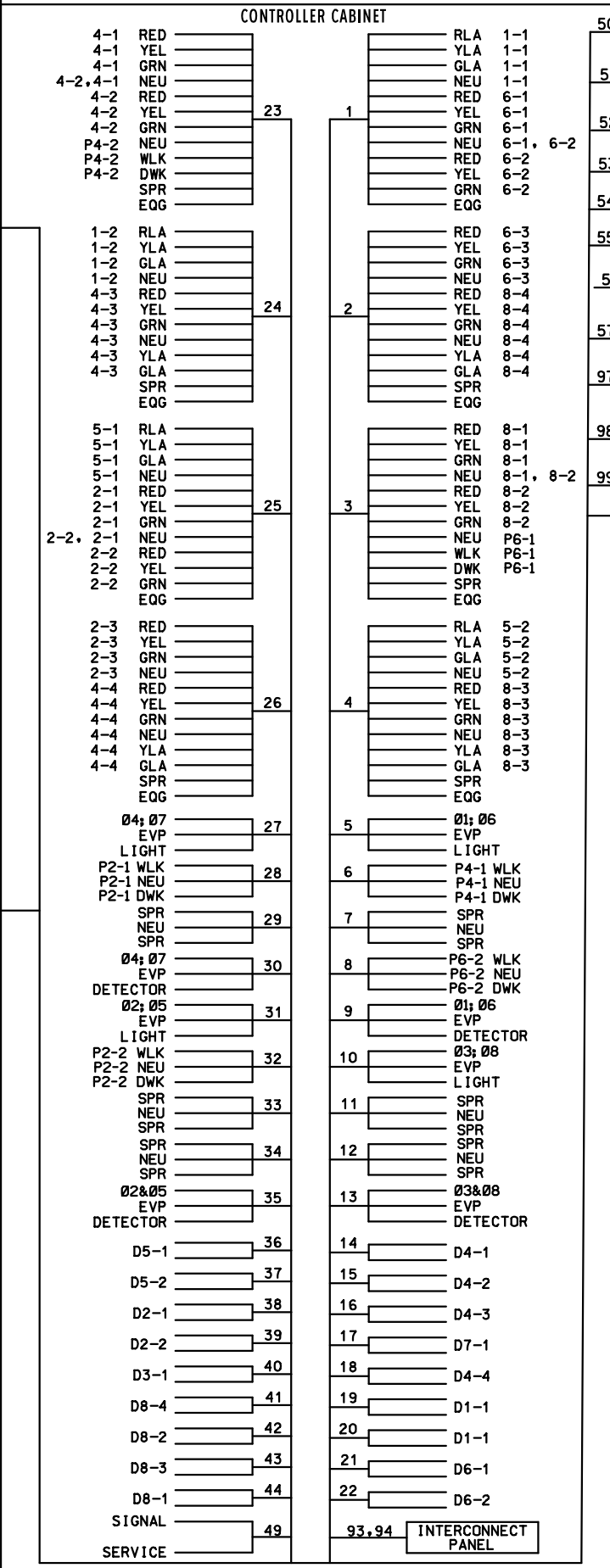
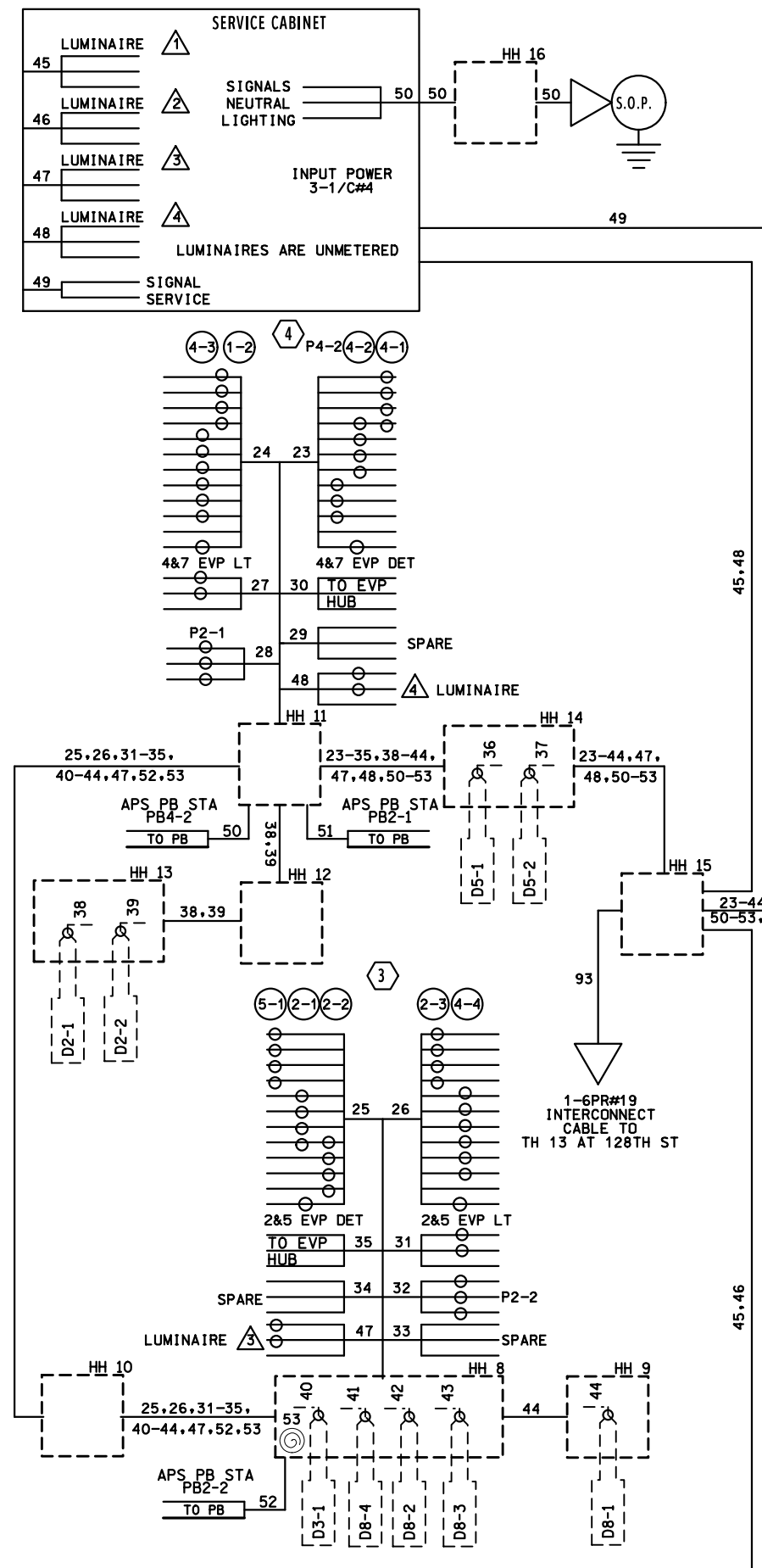


- (4) PA100 POLE FOUNDATION
TYPE PA100-A-55-D40-9 (DAVIT AT 350 DEG)
LUMINAIRE - 200 WATT HPS
2-ONEWAY SIGNALS OVERHEAD AT 0' AND 11'
R10-12 SIGN (ADJACENT TO HEAD 4-3)
ONE WAY EVP DETECTOR AND CONFIRMATORY LIGHT (PHASES 4&7)
2-TYPE 10A POLE MOUNTED AT 0 & 270 DEG
2- ANGLE MOUNT CD PED HEADS AT 90 & 180 DEG
EXTEND TO HH 11
3" RSC
2-12/C#12
3-3/C#12
1-3/C#20
1-3/C#12 (LUM)
- APS PED PB STA (PB4-2)
1-APS PB & SIGN (RT ARROW)
EXTEND INTO HH 11:
2" PVC
1-2/C#14
- APS PED PB STA (PB2-1)
1-APS PB & SIGN (LT ARROW)
EXTEND INTO HH 11:
2" PVC
1-2/C#14
- SIGNAL SYSTEM OPERATION
- THE SIGNAL SYSTEM FLASH MODE IS ALL RED.
 - NORMAL OPERATION IS .8 PHASE, WITH PHASES 1 AND 5 BEING PROTECTED LEFT TURN PHASES, AND PHASES 3 AND 7 BEING PROTECTED PERMISSIVE LEFT TURN PHASES.
 - PHASE 2 AND 6 SHALL BE ON VEHICLE RECALL.

BY	DATE	REVISIONS	SYSTEM ID: 1736133 T.E.	S.A.P. NO.	DRAWN BY:	CKD BY:	DATE:
SJK	7/25/22	UPDATE LOOP DETECTION PHASES 8&3	METER ADDRESS: HWY 13 @ W 126TH ST.	CERTIFIED BY _____	_____	_____	_____
			OLD ID: 22204 T.E.	STATE PROJ. NO. 8825-519 (TH 13)		SHEET NO. 1 OF 2 SHEETS	

PLOTTED/REVISED: 28-JUL-2022

PLOT NAME: wiring diagram
PATH & FILENAME: Projects\DM_POS\01300000\Traffic\Signals\9172_126TH ST W\1736133\1736133_sgl.dgn



CONDUCTOR COLOR CODING

R	R	
O	BL	5/C#12
BL	WH	
WH	G	
R/BLK	R	3/C#12
O/BLK	WH	
BL/BLK	BLK	
WH/BLK	R OR O	3/C#20
BLK/WH	WH OR YEL	
G/BLK	BLK OR BL	
G	BLK	2/C#14
BLK	CLEAR	

NOTE: ALL TERMINAL BLOCK CONNECTIONS SHALL BE ARRANGED AS SPECIFIED ABOVE

BY	DATE	REVISIONS	SYSTEM ID: 1736133 T.E.	FIELD WIRING DIAGRAM	S.A.P. NO.	DRAWN BY:	CKD BY:	DATE:
SJK	7/25/22	UPDATE LOOP DETECTION PHASES 8&3	METER ADDRESS: HWY 13 @ W 126TH ST.	T.H. 13 AT 126TH ST.	CERTIFIED BY _____			
			OLD ID: 22204	IN SAVAGE, SCOTT COUNTY	LICENSED PROFESSIONAL ENGINEER	LIC. NO. _____		DATE: _____
					STATE PROJ. NO. 8825-519 (TH 13)	SHEET NO. 2 OF 2 SHEETS		

PVC LOOP DETECTOR CHART

NUMBER	SIZE (FT)	LOCATION
D1-1 D1-2	6X6	10'&40'
D2-1 D2-2	6X6	475'
D3-1	6X15	50'
D4-1	6X6	180'
D4-2	6X15	AS-SHOWN
D4-3 D4-4	6X6	10'
D5-1 D5-2	6X6	10'&40'
D6-1 D6-2	6X6	475'
D7-1	6X15	50'
D8-1	6X6	180'
D8-2	6X15	AS-SHOWN
D8-3 D8-4	6X6	10'

-LOCATION: DISTANCE FROM CROSSWALK/STOP BAR IN FEET

(A) EQUIPMENT PAD (SEE DETAIL) CONTROLLER AND CABINET SERVICE CABINET (SEE DETAIL) CONTROLLER CABINET TO HH 1
 4" RSC
 4-12/C#12
 7-3/C#12
 13-2/C#14
 2-3/C#20
 1-6PR#19
 CONTROLLER CABINET TO HH 15
 4" RSC
 4-12/C#12
 7-3/C#12
 13-2/C#14
 1-6PR#19
 2-3/C#20

SERVICE CABINET TO CONTROLLER CABINET
 1 1/2" RSC
 2-1/C#6
 1-1/C#6 INS GR
 SERVICE CABINET TO HH 15
 2" RSC
 4-3/C#12 (LUM)
 SERVICE CABINET TO HH 16
 2" RSC
 3-1/C#4

(B) S.O.P. WOOD POLE AND TRANSFORMER
 2" RSC TO SERVICE CABINET
 3-1/C#4

(1) PA100 POLE FOUNDATION TYPE PA100-A-55-D40-9 (DAVIT AT 350 DEG)
 LUMINAIRE - 200 WATT HPS
 2-SWING AWAY HINGES
 3-ONEWAY SIGNALS OVERHEAD AT 0', 11', AND 23'
 ONE WAY EVP DETECTOR AND CONFIRMATORY LIGHT (PHASES 6&1)
 2-TYPE 10A POLE MOUNTED AT 0 & 270 DEG
 2-ANGLE MOUNT CD PED HEADS AT 90 & 180 DEG
 2-SIGNS TYPE R6-1L & R6-1R
 EXTEND TO HH 1
 3" RSC
 2-12/C#12
 4-3/C#12
 1-3/C#20
 1-3/C#12 (LUM)

APS PED PB STA (PB4-1)
 1-APS PB & SIGN (LT ARROW)
 EXTEND INTO HH 1:
 2" PVC
 1-2/C#14

APS PED PB STA (PB6-2)
 1-APS PB & SIGN (RT ARROW)
 EXTEND INTO HH 1:
 2" PVC
 1-2/C#14

(4) PA100 POLE FOUNDATION TYPE PA100-A-55-D40-9 (DAVIT AT 350 DEG)
 LUMINAIRE - 200 WATT HPS
 2-ONEWAY SIGNALS OVERHEAD AT 0' AND 11'
 R10-12 SIGN (ADJACENT TO HEAD 4-3)
 ONE WAY EVP DETECTOR AND CONFIRMATORY LIGHT (PHASES 4&7)
 2-TYPE 10A POLE MOUNTED AT 0 & 270 DEG
 2-ANGLE MOUNT CD PED HEADS AT 90 & 180 DEG
 EXTEND TO HH 11
 3" RSC
 2-12/C#12
 3-3/C#12
 1-3/C#20
 1-3/C#12 (LUM)

APS PED PB STA (PB4-2)
 1-APS PB & SIGN (RT ARROW)
 EXTEND INTO HH 11:
 2" PVC
 1-2/C#14

APS PED PB STA (PB2-1)
 1-APS PB & SIGN (LT ARROW)
 EXTEND INTO HH 11:
 2" PVC
 1-2/C#14

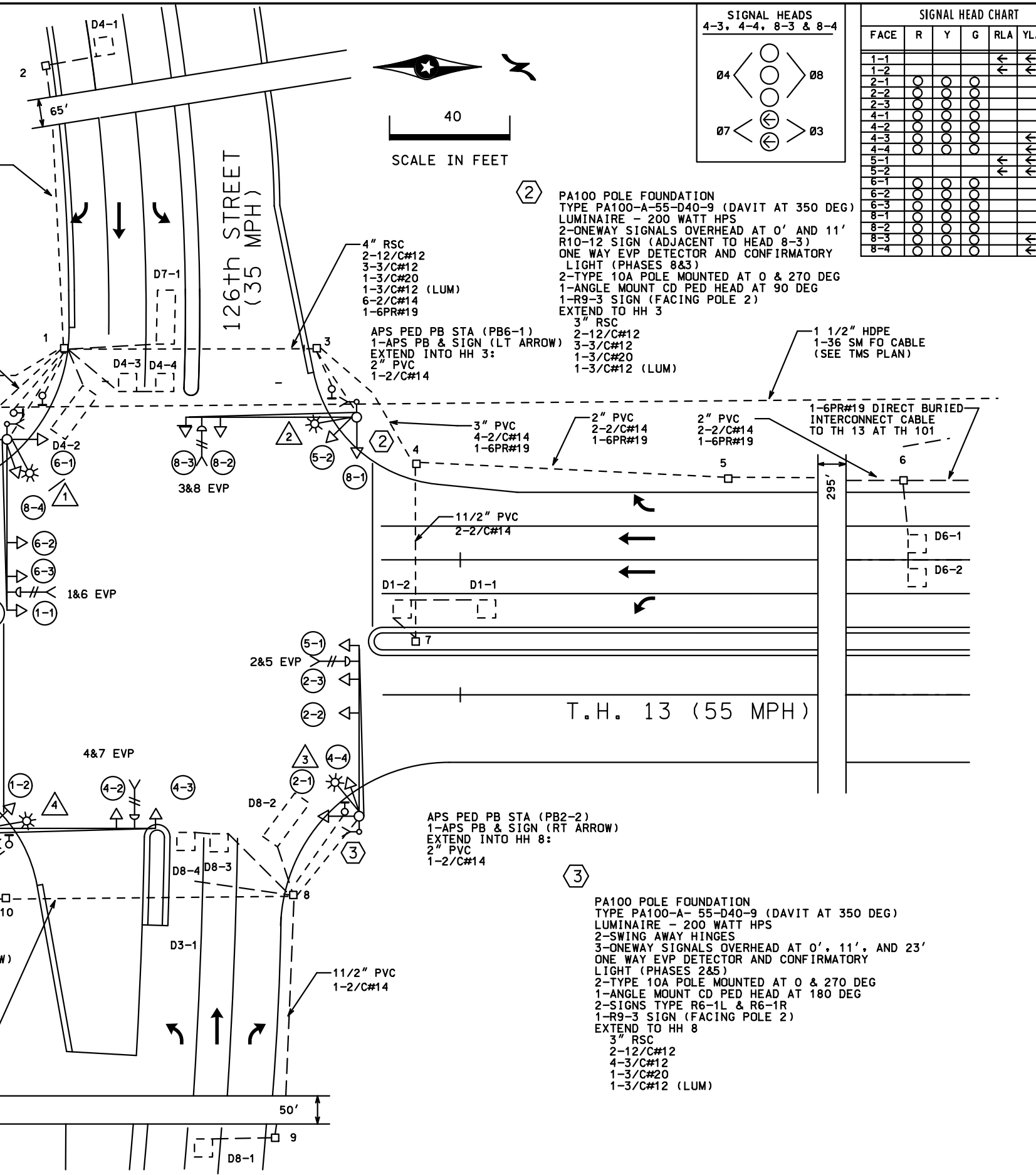
(3) PA100 POLE FOUNDATION TYPE PA100-A-55-D40-9 (DAVIT AT 350 DEG)
 LUMINAIRE - 200 WATT HPS
 2-SWING AWAY HINGES
 3-ONEWAY SIGNALS OVERHEAD AT 0', 11', AND 23'
 ONE WAY EVP DETECTOR AND CONFIRMATORY LIGHT (PHASES 2&5)
 2-TYPE 10A POLE MOUNTED AT 0 & 270 DEG
 1-ANGLE MOUNT CD PED HEAD AT 180 DEG
 2-SIGNS TYPE R6-1L & R6-1R
 1-R9-3 SIGN (FACING POLE 2)
 EXTEND TO HH 8
 3" RSC
 2-12/C#12
 4-3/C#12
 1-3/C#20
 1-3/C#12 (LUM)

APS PED PB STA (PB2-2)
 1-APS PB & SIGN (RT ARROW)
 EXTEND INTO HH 8:
 2" PVC
 1-2/C#14

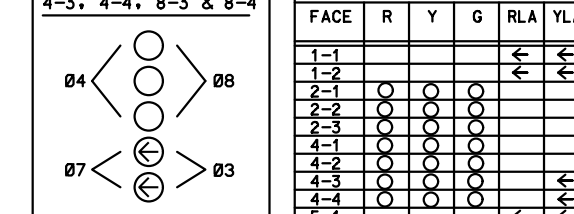
(2) PA100 POLE FOUNDATION TYPE PA100-A-55-D40-9 (DAVIT AT 350 DEG)
 LUMINAIRE - 200 WATT HPS
 2-ONEWAY SIGNALS OVERHEAD AT 0' AND 11'
 R10-12 SIGN (ADJACENT TO HEAD 8-3)
 ONE WAY EVP DETECTOR AND CONFIRMATORY LIGHT (PHASES 8&3)
 2-TYPE 10A POLE MOUNTED AT 0 & 270 DEG
 1-ANGLE MOUNT CD PED HEAD AT 90 DEG
 1-R9-3 SIGN (FACING POLE 2)
 EXTEND TO HH 3
 3" RSC
 2-12/C#12
 3-3/C#12
 1-3/C#12 (LUM)

SIGNAL SYSTEM OPERATION

- THE SIGNAL SYSTEM FLASH MODE IS ALL RED.
- NORMAL OPERATION IS .8 PHASE, WITH PHASES 1 AND 5 BEING PROTECTED LEFT TURN PHASES, AND PHASES 3 AND 7 BEING PROTECTED PERMISSIVE LEFT TURN PHASES.
- PHASE 2 AND 6 SHALL BE ON VEHICLE RECALL.



SIGNAL HEADS
 4-3, 4-4, 8-3 & 8-4



SIGNAL HEAD CHART

FACE	R	Y	G	RLA	YLA	GLA
1-1						
1-2						
2-1						
2-2						
2-3						
4-1						
4-2						
4-3						
4-4						
5-1						
5-2						
6-1						
6-2						
6-3						
8-1						
8-2						
8-3						
8-4						

PLOTTED/REVISED: 9/17/2015

DISTRICT #: METRO
 IPLOT NAME: layout
 PATH & FILENAME: IP_PWP-d07803161722204-ssl.dgn

BY	DATE	REVISIONS
SJK	11-28-12	CLEANED UP PRINT
EJA	09-17-15	AS-BUILT OF SP 7001-103

SYSTEM ID: 22204 T.E.
 METER ADDRESS: HWY 13 @ W 126 ST
 MASTER ID: T.E.

**INTERSECTION LAYOUT
 TH 13 AT 126TH STREET
 IN SAVAGE, SCOTT COUNTY**

S.A.P. NO. _____ DRAWN BY: _____ CKD BY: _____ DATE: _____
 CERTIFIED BY _____ LIC. NO. _____ DATE: _____
 STATE PROJ. NO. (T.H.13) SHEET NO. 1 OF 2 SHEETS

SEE SHEET 89

SEE SHEET 91

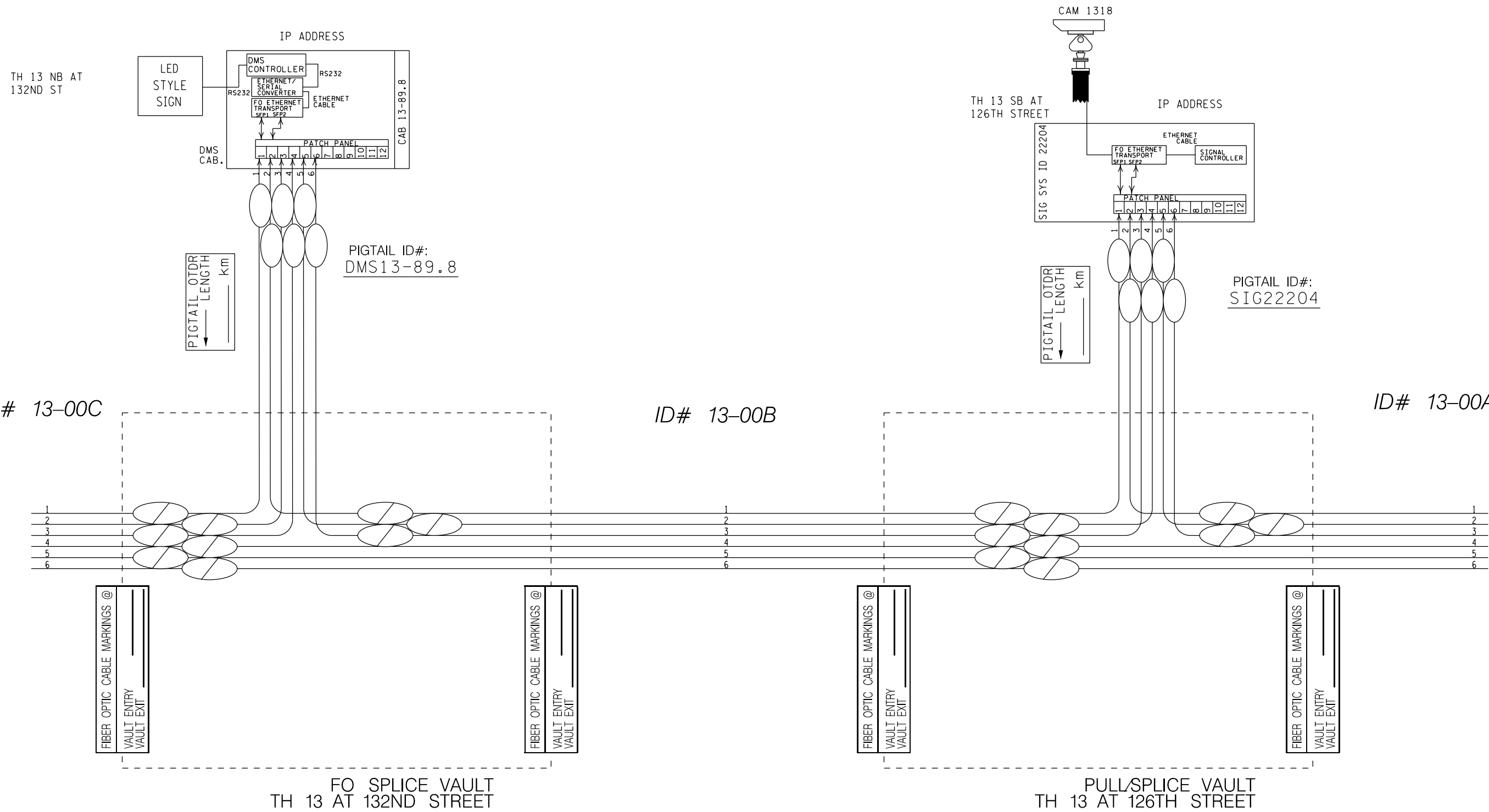
ID# 13-00C

ID# 13-00B

ID# 13-00A

SOUTH

NORTH



NO.	DATE	BY	CHK	REVISIONS

Design By: MF
 Plan By: MF
 Checked By: ES
 Approved By: SD

I HEREBY CERTIFY THAT THIS PLAN, SPECIFICATION, OR REPORT WAS PREPARED BY OR UNDER MY DIRECT SUPERVISION AND THAT I AM A DULY LICENSED PROFESSIONAL ENGINEER UNDER THE LAWS OF THE STATE OF MINNESOTA.

PRINT NAME: SEAN DELMORE, PE
 DATE: 9/7/2023 LICENSE #: 40145



Fish Point Road at TH 13 Intersection Improvements

CITY OF PRIOR LAKE, MINNESOTA
 FIBER TESTING SHEETS
TRAFFIC CONTROL SIGNAL PLAN
 SP 7001-139 (TH 13) & SAP 201-105-109

SHEET 90 OF 91 SHEETS