

PLOTTED/REVISED: 6-APR-2023

DISTRICT *: Metro
 PLOT NAME: Street_59
 FILENAME: Project\DM_FOS\013\0000\Traffic\Signal\8675_144\160TH_ST&SASH MAIN AVE-1735098-PENDING\GT 20285.dgn

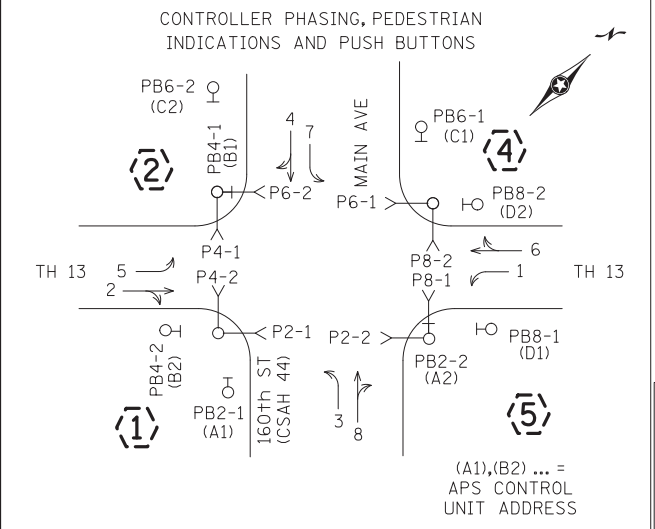
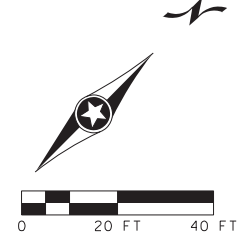
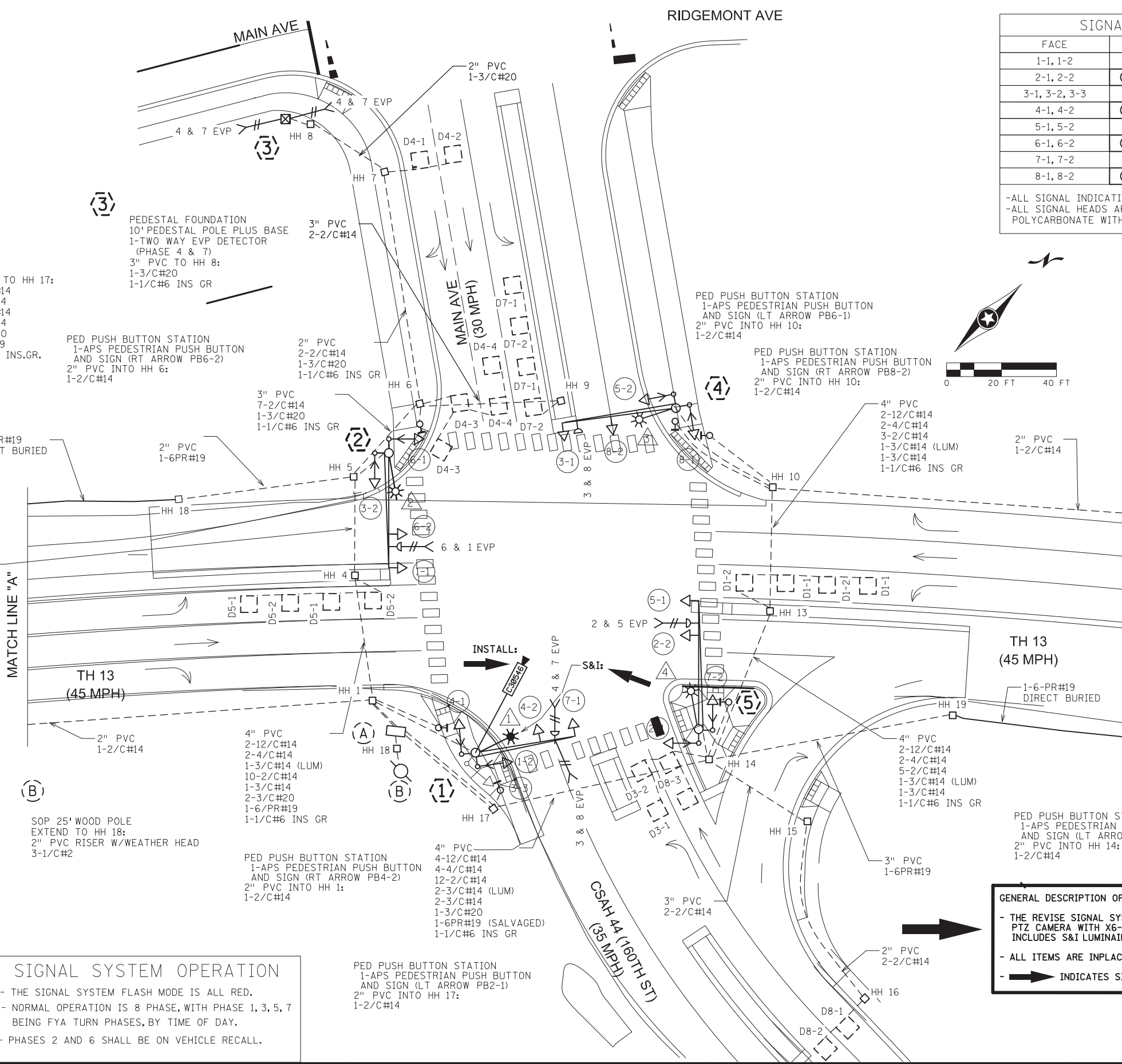
LOOP DETECTOR CHART		
NUMBER	SIZE (FT)	LOCATION
D1-1, D5-1, D7-1	2-6x6	20 & 50
D1-2, D5-2, D7-2	2-6x6	5 & 35
D2-1, D6-1	6x6	300
D3-1	6x6	20
D3-2	6x6	5
D4-1, D4-2	6x6	120
D4-3	2-6x6	-5 & 5
D4-4	2-6x6	5 & 20
D8-1, 8-2	6x6	180
D8-3	2-6x6	5 & 20

-ALL LOOP DETECTORS SHALL BE PVC
 -LOCATION: DISTANCE FROM CROSSWALK/STOP BAR IN FEET

SIGNAL HEAD CHART							
FACE	R	Y	G	RLA	YLA	FYA	GLA
1-1, 1-2				←	←	←	←
2-1, 2-2	○	○	○				
3-1, 3-2, 3-3				←	←	←	←
4-1, 4-2	○	○	○				
5-1, 5-2				←	←	←	←
6-1, 6-2	○	○	○				
7-1, 7-2				←	←	←	←
8-1, 8-2	○	○	○				

-ALL SIGNAL INDICATIONS ARE 12" LED
 -ALL SIGNAL HEADS ARE BLACK POLYCARBONATE WITH BACKGROUND SHIELDS

- (A) EQUIPMENT PAD - SEE DETAIL
 SERVICE CABINET CONTROLLER AND CABINET
 4" PVC TO HH 1:
 3-12/C#14
 2-4/C#14
 4" PVC TO HH 1:
 2-12/C#14
 2-4/C#14
 1-3/C#14
 2-3/C#20
 11-2/C#14
 1-6PR#19 (SALVAGED)
 1-1/C#6 INS.GR.
- 4" PVC TO HH 1:
 3-12/C#14
 2-4/C#14
 1-3/C#14
 2-3/C#20
 1-2/C#14
F&I: 1-COM CABLE (CAT5E)(PTZ)
 1-1/C#6 INS. GR.
- 4" PVC TO HH 17:
 4-12/C#14
 4-4/C#14
 13-2/C#14
 2-3/C#14
 1-3/C#20
 1-6PR#19
 1-1/C#6 INS.GR.
- 3" PVC STUBBED OUT - CAPPED BOTH ENDS
- 3/4" PVC STUBBED OUT CAPPED FOR TELEPHONE LINE
- 2" PVC TO SERVICE CABINET
 2-1/C#6
 1-1/C#6 INS. GR.
- 2-2" PVC STUBBED OUT AND CAPPED BOTH ENDS (ONE FROM CONTROLLER CABINET, ONE FROM SERVICE CABINET)
- 2" PVC TO SERVICE CABINET (COMMS)
 SERVICE CABINET TO HH 18:
 2" PVC
 3-1/C #2
- 4" PVC
 2-12/C#14
 2-4/C#14
 1-3/C#14 (LUM)
 8-2/C#14
 1-3/C#14
 2-3/C#20
 1-6/PR#19
 1-1/C#6 INS GR
- SERVICE CABINET TO HH 1:
 2" PVC
 2-3/C #14 (LUM)
- SERVICE CABINET TO HH 17:
 2" PVC
 2-3/C#14 (LUM)



SIGNAL SYSTEM OPERATION

- THE SIGNAL SYSTEM FLASH MODE IS ALL RED.
- NORMAL OPERATION IS 8 PHASE, WITH PHASE 1, 3, 5, 7 BEING FYA TURN PHASES, BY TIME OF DAY.
- PHASES 2 AND 6 SHALL BE ON VEHICLE RECALL.

GENERAL DESCRIPTION OF THE SIGNAL REVISION WORK:

- THE REVISE SIGNAL SYSTEM WORK CONSISTS OF INSTALLING A PTZ CAMERA WITH X6-350/CAM 400 EXTENSION. THE WORK INCLUDES S&I LUMINAIRE, AND F&I CAT5E CABLE (PTZ).
- ALL ITEMS ARE INPLACE UNLESS OTHERWISE INDICATED.
- INDICATES SIGNAL REVISION WORK TO BE COMPLETED.

BY	DATE	REVISIONS

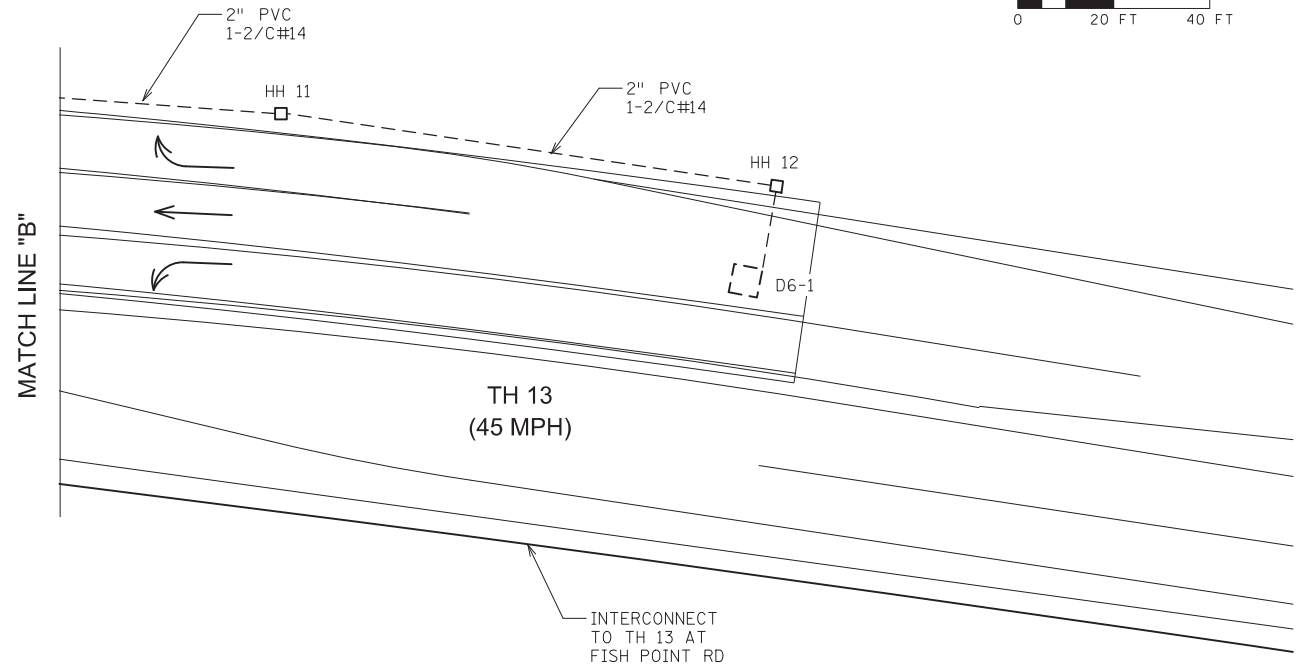
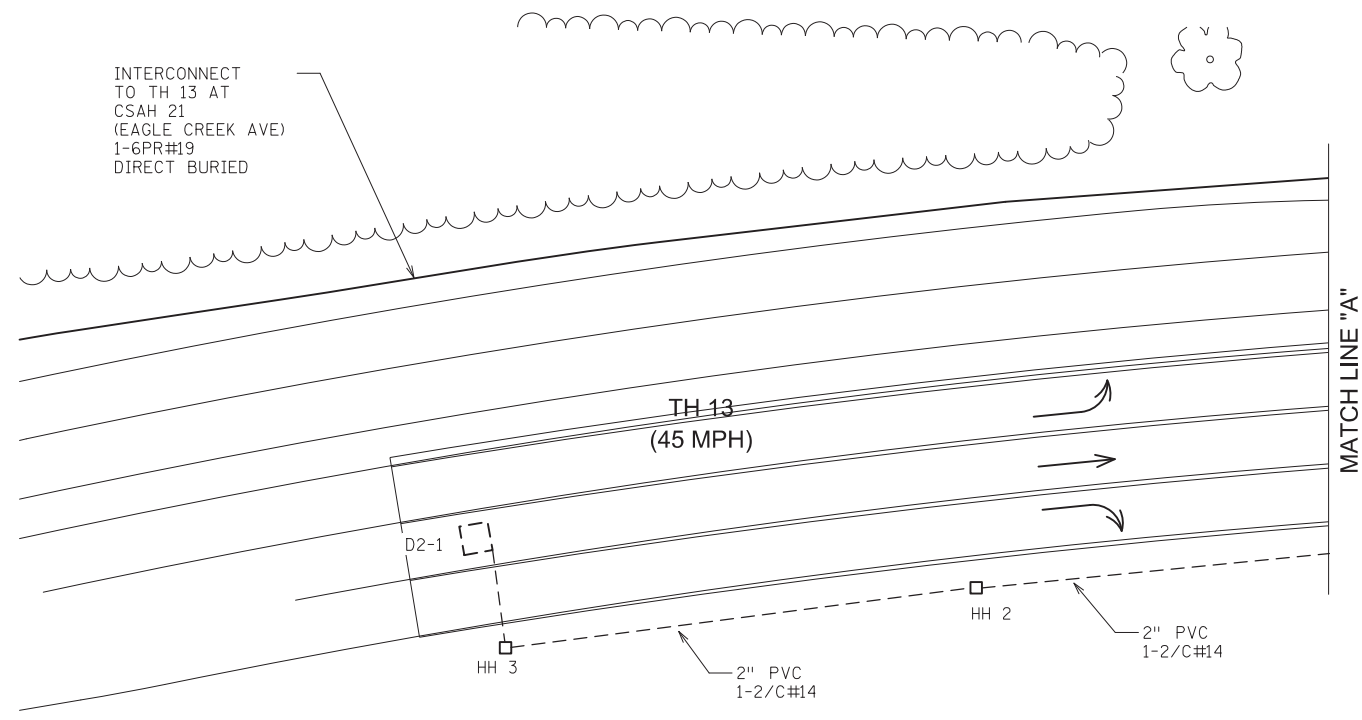
SYSTEM ID: 1735098 T.E. 92833
 METER ADDRESS:
 OLD SYSTEM ID: 20285

**REVISE SIGNAL SYSTEM "Q"
 INTERSECTION LAYOUT
 TH 13 AT CSAH 44 (160TH ST)/MAIN AVE
 IN PRIOR LAKE, SCOTT COUNTY**

S.A.P. NO. _____ DRAWN BY:HRL CKD BY:CDB DATE:03/31/23
 CERTIFIED BY LIC. NO. 26829 DATE: 04/04/23
 STATE PROJ.NO. 8825-1025(T.H.999) SHEET NO. 59 OF 121 SHEETS

PLOTTED/REVISED: 6-APR-2023

DISTRICT *: Metro
 IPLOT NAME: Sheet_60
 FILENAME: Projects\DM_FROSO\13\000007\Traffic\Signals\8675_144\160TH_ST&slashtMAIN_AVE-1735098-PENDING\T 20285.dgn



- (2) PA90 POLE FOUNDATION
 PA90 SWING AWAY HINGES
 TYPE PA90-A-40-D32-9 (DAVIT AT 350 DEG)
 1-ANGLE MOUNT SIGNAL AT 0'
 1-STRAIGHT MOUNT SIGNAL AT 12'
 2-ANGLE MOUNT SIGNALS
 AT 90 AND 180 DEG
 2-ANGLE MOUNT CD PED HEADS
 AT 90 AND 180 DEG
 1-APS PEDESTRIAN PB AND SIGN
 (LT ARROW PB4-1)
 1-ONE WAY EVP DETECTOR AND CONFIRMATORY
 LIGHT (PHASES 1 & 6)
 LED LUMINAIRE
 2-TYPE D SIGNS
 1-R10-X12 SIGN (ADJACENT TO HEAD 1-1)
 1-ELECTRICAL OUTLET
 3" PVC TO HH 5:
 2-12/C#14
 2-4/C#14
 1-3/C#14 (LUM)
 1-3/C#14
 1-3/C#20
 1-2/C#14
 1-1/C#6 INS GR

- (1) PA90 POLE FOUNDATION
 TYPE PA90-A-35
 1-D32-9 (DAVIT AT 350 DEG) (CITY STYLE)
 1-X6-350/CAM 400 EXTENTION (STATE FURNISHED) (MOUNTED
 AT 350 DEG) (INCLUDES LIGHTNING ROD, 7/16" GROUND
 BRAID AND GROUND ROD)
 S&I: 1-ELECTRICAL OUTLET ON LUMINAIRE EXTENTION
 INSTALL: 1-PTZ VIDEO CAMERA C30546 (STATE FURNISHED)
 1-ANGLE MOUNT SIGNAL AT 0'
 1-STRAIGHT MOUNT SIGNAL AT 12'
 3-ANGLE MOUNT SIGNALS
 AT 45, 135 AND 225 DEG
 2-ANGLE MOUNT CD PED HEADS
 AT 90 AND 180 DEG
 1-ONE WAY EVP DETECTOR (PHASES 3 & 8)
 1-ONE WAY EVP CONFIRMATORY LIGHT
 (PHASES 4 & 7)
 S&I: 1-LED LUMINAIRE (CITY STYLE)
 1-TYPE D SIGN
 1-R10-X12 SIGN (ADJACENT TO HEAD 7-1)
 1-ELECTRICAL OUTLET
 3" PVC TO HH 1:
 3-12/C#14
 2-4/C#14
 1-3/C#14 (LUM)
 1-3/C#14
 2-3/C#20
 F&I: 1-COM CABLE (CAT 5E)(PTZ)
 1-1/C#6 INS GR

- (4) PA90 POLE FOUNDATION
 TYPE PA90-A-40-D32-9 (DAVIT AT 350 DEG)
 1-ANGLE MOUNT SIGNAL AT 0'
 1-STRAIGHT MOUNT SIGNAL AT 17'
 2-ANGLE MOUNT SIGNALS AT 90 AND 180 DEG
 2-ANGLE MOUNT CD PED HEADS
 AT 90 AND 180 DEG
 1-ONE WAY EVP CONFIRMATORY
 LIGHT (PHASES 3 & 8)
 LED LUMINAIRE
 1-TYPE D SIGN
 1-R10-X12 SIGN (ADJACENT TO HEAD 3-1)
 1-ELECTRICAL OUTLET
 3" PVC TO HH 10:
 2-12/C#14
 2-4/C#14
 1-3/C#14 (LUM)
 1-3/C#14
 1-1/C#6 INS GR

- (5) PA100 POLE FOUNDATION
 PA100 SWING AWAY HINGES
 TYPE PA100-A-45-D32-9 (DAVIT AT 350 DEG)
 1-ANGLE MOUNT SIGNAL AT 0'
 1-STRAIGHT MOUNT SIGNAL AT 12'
 2-ANGLE MOUNT SIGNALS AT 90 AND 180 DEG
 2-ANGLE MOUNT CD PED HEADS
 AT 90 AND 180 DEG
 1-APS PEDESTRIAN PB AND SIGN
 (RT ARROW PB2-2)
 1-ONE WAY EVP DETECTOR AND CONFIRMATORY
 LIGHT (PHASES 2 & 5)
 LED LUMINAIRE
 2-TYPE D SIGNS
 1-R10-X12 SIGN (ADJACENT TO HEAD 5-1)
 1-ELECTRICAL OUTLET
 3" PVC TO HH 14:
 2-12/C#14
 2-4/C#14
 1-3/C#14 (LUM)
 1-3/C#14
 1-3/C#20
 1-2/C#14
 1-1/C#6 INS GR

GENERAL DESCRIPTION OF THE SIGNAL REVISION WORK:

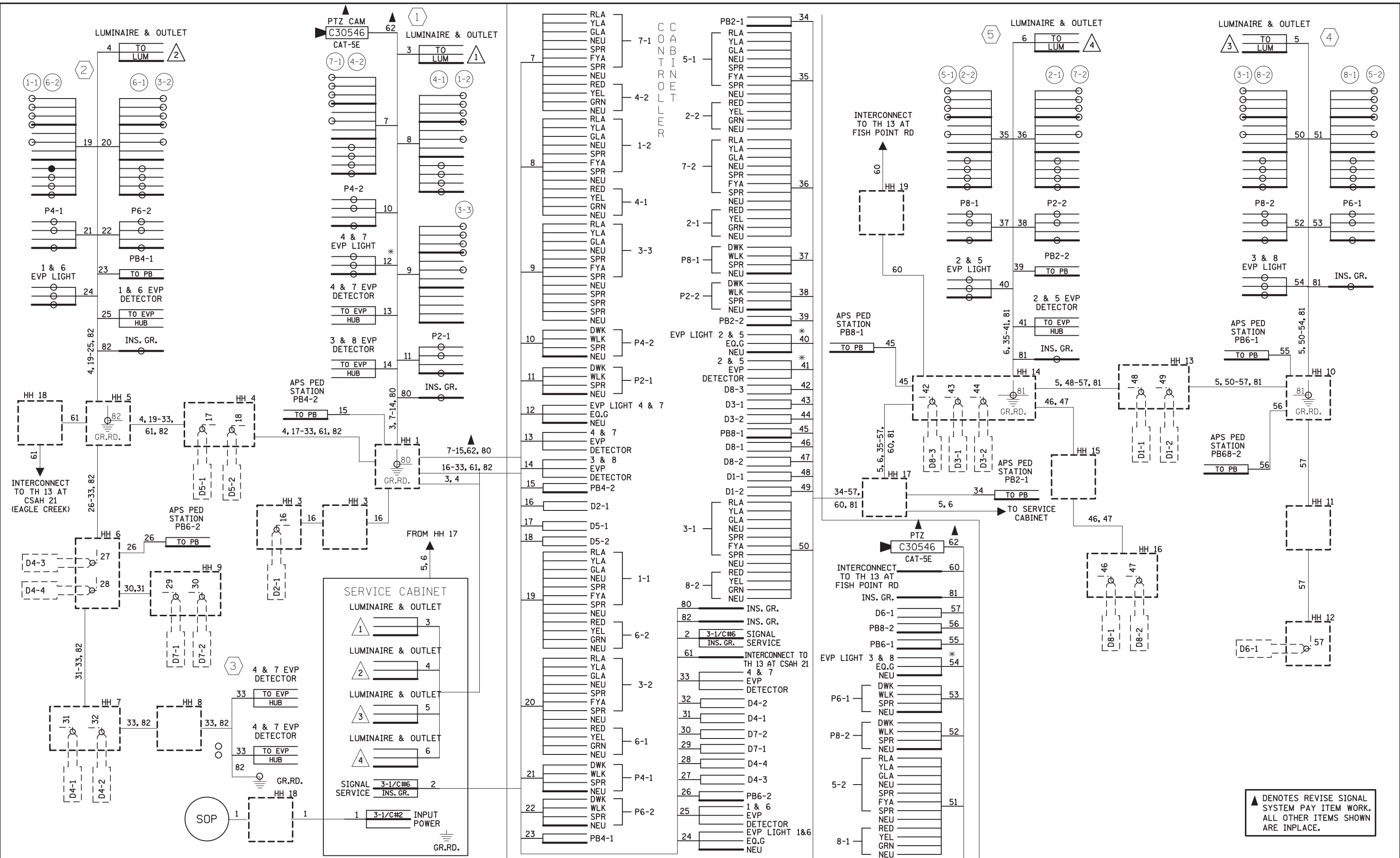
- THE REVISE SIGNAL SYSTEM WORK CONSISTS OF INSTALLING A PTZ CAMERA WITH X6-350/CAM 400 EXTENSION. THE WORK INCLUDES S&I LUMINAIRE, AND F&I CAT5E CABLE (PTZ).
- ALL ITEMS ARE INPLACE UNLESS OTHERWISE INDICATED.
- INDICATES SIGNAL REVISION WORK TO BE COMPLETED.

BY	DATE	REVISIONS	SYSTEM ID: 1735098	T.E. 92833	S.A.P. NO.	DRAWN BY: HRL	CKD BY: CDB	DATE: 03/31/23
			METER ADDRESS:		CERTIFIED BY	LIC. NO. 26829	DATE: 04/04/23	
			OLD SYSTEM ID: 20285		STATE PROJ. NO. 8825-1025 (T.H. 999) SHEET NO. 60 OF 121 SHEETS			

**REVISE SIGNAL SYSTEM "Q"
 POLE NOTES AND MATCHLINE LAYOUT
 TH 13 AT CSAH 44 (160TH ST)/MAIN AVE
 IN PRIOR LAKE, SCOTT COUNTY**

PLOTTED/REVISED: 6-APR-2023

DISTRICT *: Metro
PLOT NAME: Street.GI
FILENAME: Projects\DM_FOS\013\0000\Traffic\Signals\8675_144\160TH_ST&slashMAIN_AVE-1735098-PENDING\T 20285.dgn



▲ DENOTES REVISE SIGNAL SYSTEM PAY ITEM WORK. ALL OTHER ITEMS SHOWN ARE INPLACE.

BY	DATE	REVISIONS

SYSTEM ID: 1735098 T.E. 92833
 METER ADDRESS:
 OLD SYSTEM ID: 20285

**REVISE SIGNAL SYSTEM "Q"
 WIRING DIAGRAM
 TH 13 AT CSAH 44 (160TH ST)/MAIN AVE
 IN PRIOR LAKE, SCOTT COUNTY**

S.A.P. NO. _____
 DRAWN BY: HRL CKD BY: CDB DATE: 03/31/23
 CERTIFIED BY: *Gregory Ken* LIC. NO. 26829 DATE: 04/04/23
 STATE PROJ. NO. 8825-1025 (T.H. 999) SHEET NO. 61 OF 121 SHEETS

LOOP DETECTOR CHART		
NUMBER	SIZE (FT)	LOCATION
D1-1, D5-1, D7-1	2-6x6	20 & 50
D1-2, D5-2, D7-2	2-6x6	5 & 35
D2-1, D6-1	6x6	300
D3-1	6x6	20
D3-2	6x6	5
D4-1, D4-2	6x6	120
D4-3	2-6x6	-5 & 5
D4-4	2-6x6	5 & 20
D8-1, 8-2	6x6	180
D8-3	2-6x6	5 & 20

-ALL LOOP DETECTORS SHALL BE PVC
-LOCATION: DISTANCE FROM CROSSWALK/STOP BAR IN FEET

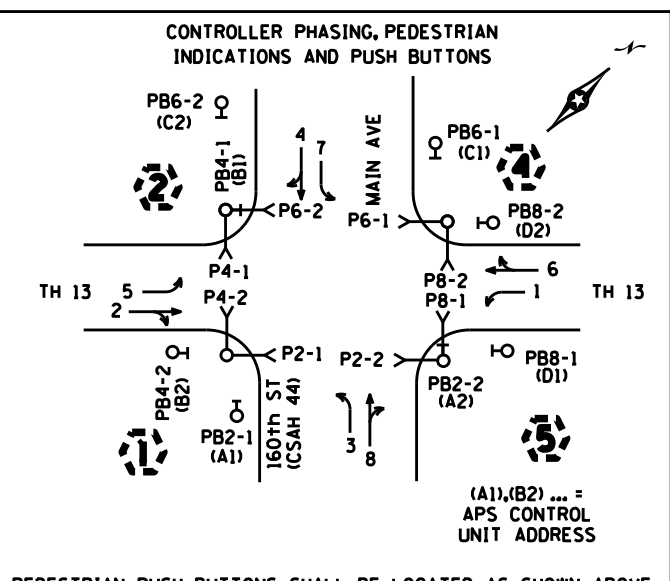
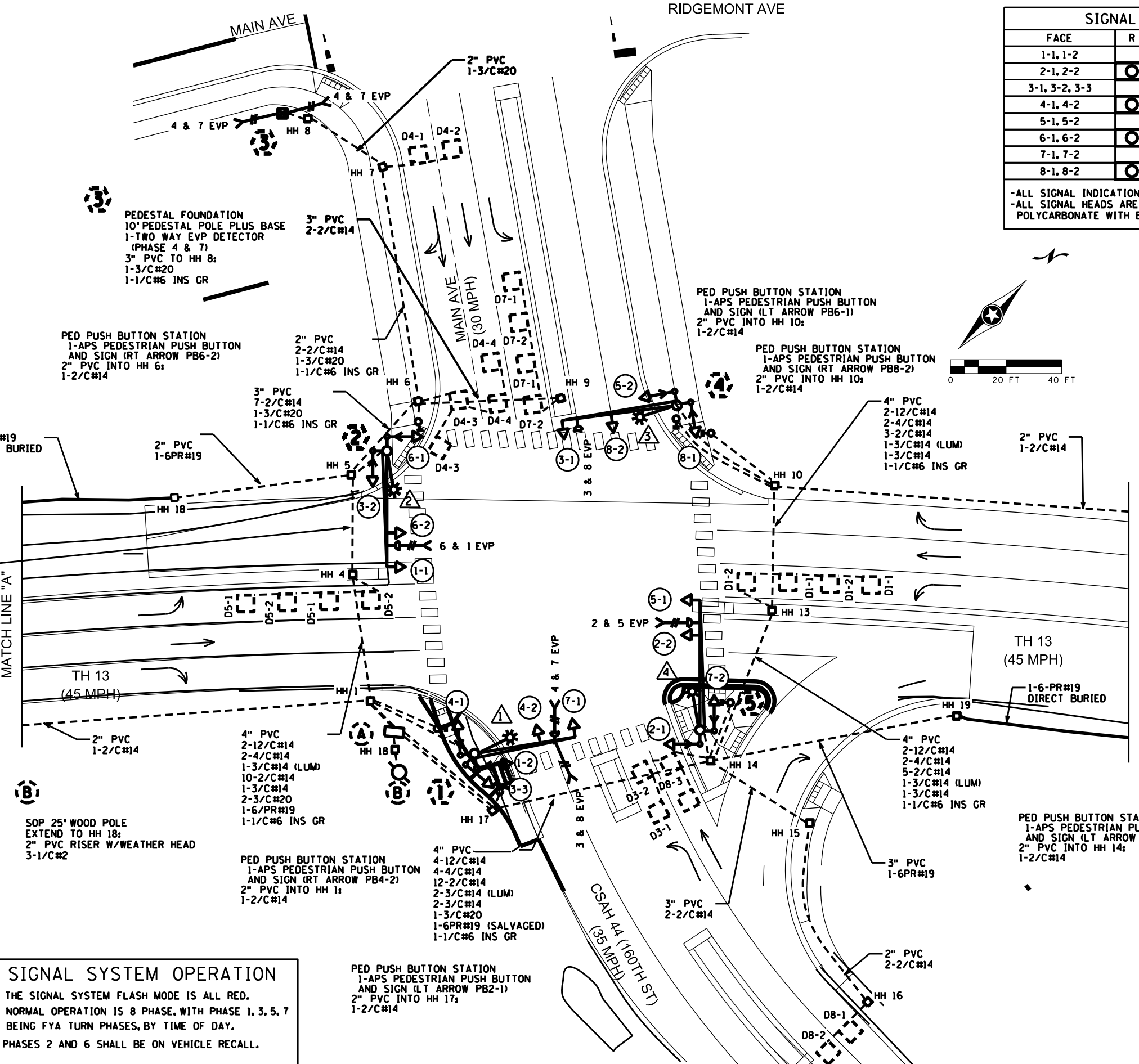
SIGNAL HEAD CHART							
FACE	R	Y	G	RLA	YLA	FYA	GLA
1-1, 1-2				←	←	←	←
2-1, 2-2	○	○	○				
3-1, 3-2, 3-3				←	←	←	←
4-1, 4-2	○	○	○				
5-1, 5-2				←	←	←	←
6-1, 6-2	○	○	○				
7-1, 7-2				←	←	←	←
8-1, 8-2	○	○	○				

-ALL SIGNAL INDICATIONS ARE 12" LED
-ALL SIGNAL HEADS ARE BLACK POLYCARBONATE WITH BACKGROUND SHIELDS

PLOTTED/REVISED: sss@DATE/sss

EQUIPMENT PAD - SEE DETAIL
SERVICE CABINET CONTROLLER AND CABINET
4" PVC TO HH 1: 4" PVC TO HH 17:
2-12/C#14 4-12/C#14
2-4/C#14 4-4/C#14
1-3/C#14 13-2/C#14
2-3/C#20 2-3/C#14
11-2/C#14 1-3/C#20
1-6PR#19 (SALVAGED) 1-6PR#19
1-1/C#6 INS.GR. 1-1/C#6 INS.GR.
4" PVC TO HH 1: 1-1/C#6 INS.GR.
3-12/C#14
2-4/C#14
1-3/C#14
2-3/C#20
1-2/C#14
1-1/C#6 INS.GR.
3" PVC STUBBED OUT - CAPPED BOTH ENDS
3/4" PVC STUBBED OUT CAPPED FOR TELEPHONE LINE
2" PVC TO SERVICE CABINET
2-1/C#6
1-1/C#6 INS.GR.
2-2" PVC STUBBED OUT AND CAPPED BOTH ENDS (ONE FROM CONTROLLER CABINET, ONE FROM SERVICE CABINET)
2" PVC TO SERVICE CABINET (COMMS)
SERVICE CABINET TO HH 18:
2" PVC
3-1/C #2
SERVICE CABINET TO HH 1:
2" PVC
2-3/C #14 (LUM)
SERVICE CABINET TO HH 17:
2" PVC
2-3/C#14 (LUM)

4" PVC 2-12/C#14
2-4/C#14
1-3/C#14 (LUM)
8-2/C#14
1-3/C#14
2-3/C#20
1-6/PR#19
1-1/C#6 INS GR



SIGNAL SYSTEM OPERATION

- THE SIGNAL SYSTEM FLASH MODE IS ALL RED.
- NORMAL OPERATION IS 8 PHASE, WITH PHASE 1, 3, 5, 7 BEING FYA TURN PHASES, BY TIME OF DAY.
- PHASES 2 AND 6 SHALL BE ON VEHICLE RECALL.

BY	DATE	REVISIONS
EJA	09-09-15	AS-BUILT PLAN OF SP 7001-108

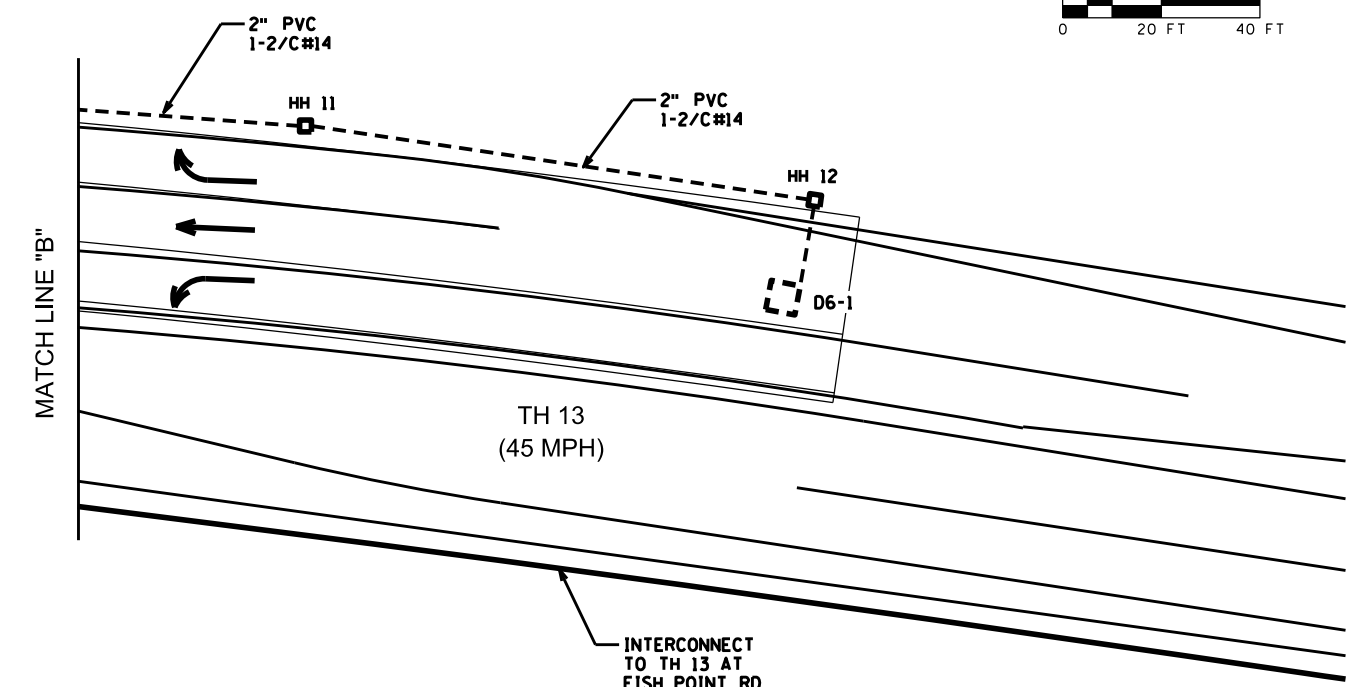
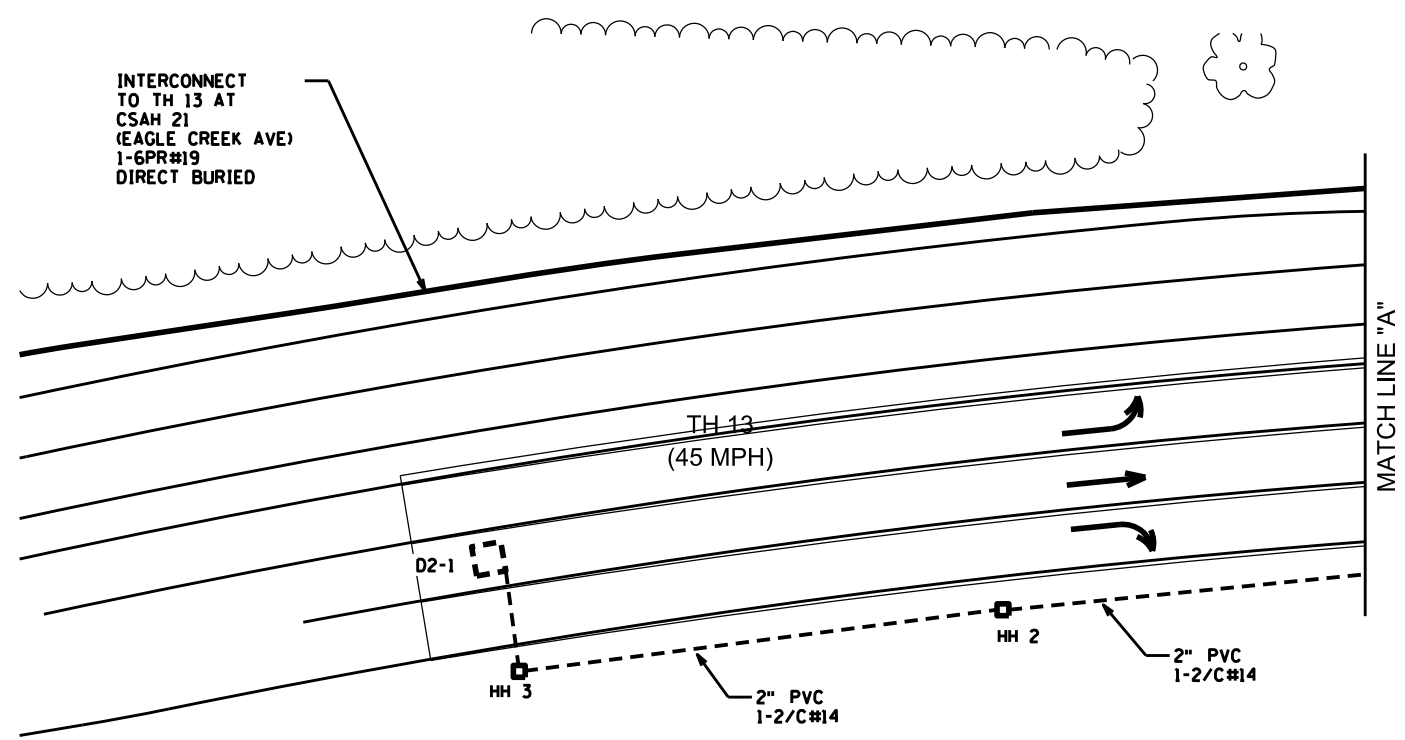
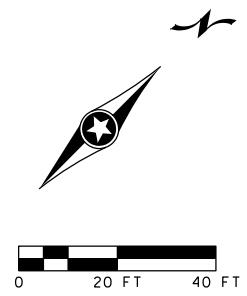
SYSTEM ID: 20205 T.E.
METER ADDRESS: 4995 160TH ST SE
MASTER ID: T.E.

INTERSECTION LAYOUT
TH 13 AT CSAH 44 (160TH ST)/MAIN AVE
IN PRIOR LAKE, SCOTT COUNTY

S.A.P. NO. _____
DRAWN BY: _____
CERTIFIED BY: _____ LIC. NO. _____ DATE: _____
STATE PROJ. NO. (T.H.13) SHEET NO. 1 OF 5 SHEETS

PLOTTED/REVISED: \$\$\$DATE\$\$\$\$

DISTRICT: \$\$\$DISTRICT\$\$\$
PLOT NAME: \$\$\$PLOTNAME\$\$\$
PATH & FILENAME: \$\$\$PATHFILENAME\$\$\$



- ② PA90 POLE FOUNDATION
PA90 SWINGE AWAY HINGES
TYPE PA90-A-40-D32-9 (DAVIT AT 350 DEG)
1-ANGLE MOUNT SIGNAL AT 0'
1-STRAIGHT MOUNT SIGNAL AT 12'
2-ANGLE MOUNT SIGNALS
AT 90 AND 180 DEG
2-ANGLE MOUNT CD PED HEADS
AT 90 AND 180 DEG
1-APS PEDESTRIAN PB AND SIGN
(LT ARROW PB4-1)
1-ONE WAY EVP DETECTOR AND CONFIRMATORY
LIGHT (PHASES 1 & 6)
LED LUMINAIRE
2-TYPE D SIGNS
1-R10-X12 SIGN (ADJACENT TO HEAD 1-1)
1-ELECTRICAL OUTLET
3" PVC TO HH 5:
2-12/C#14
2-4/C#14
1-3/C#14 (LUM)
1-3/C#14
1-3/C#20
1-2/C#14
1-1/C#6 INS GR

- ③ PA90 POLE FOUNDATION
TYPE PA90-A-35-D32-9 (DAVIT AT 350 DEG)
1-ANGLE MOUNT SIGNAL AT 0'
1-STRAIGHT MOUNT SIGNAL AT 12'
3-ANGLE MOUNT SIGNALS
AT 45, 135 AND 225 DEG
2-ANGLE MOUNT CD PED HEADS
AT 90 AND 180 DEG
1-ONE WAY EVP DETECTOR (PHASES 3 & 8)
1-ONE WAY EVP CONFIRMATORY LIGHT
(PHASES 4 & 7)
LED LUMINAIRE
1-TYPE D SIGN
1-R10-X12 SIGN (ADJACENT TO HEAD 7-1)
1-ELECTRICAL OUTLET
3" PVC TO HH 1:
3-12/C#14
2-4/C#14
1-3/C#14 (LUM)
1-3/C#14
2-3/C#20
1-1/C#6 INS GR

- ④ PA90 POLE FOUNDATION
TYPE PA90-A-40-D32-9 (DAVIT AT 350 DEG)
1-ANGLE MOUNT SIGNAL AT 0'
1-STRAIGHT MOUNT SIGNAL AT 17'
2-ANGLE MOUNT SIGNALS AT 90 AND 180 DEG
2-ANGLE MOUNT CD PED HEADS
AT 90 AND 180 DEG
1-ONE WAY EVP CONFIRMATORY
LIGHT (PHASES 3 & 8)
LED LUMINAIRE
1-TYPE D SIGN
1-R10-X12 SIGN (ADJACENT TO HEAD 3-1)
1-ELECTRICAL OUTLET
3" PVC TO HH 10:
2-12/C#14
2-4/C#14
1-3/C#14 (LUM)
1-3/C#14
1-1/C#6 INS GR

- ⑤ PA100 POLE FOUNDATION
PA100 SWINGE AWAY HINGES
TYPE PA100-A-45-D32-9 (DAVIT AT 350 DEG)
1-ANGLE MOUNT SIGNAL AT 0'
1-STRAIGHT MOUNT SIGNAL AT 12'
2-ANGLE MOUNT SIGNALS AT 90 AND 180 DEG
2-ANGLE MOUNT CD PED HEADS
AT 90 AND 180 DEG
1-APS PEDESTRIAN PB AND SIGN
(RT ARROW PB2-2)
1-ONE WAY EVP DETECTOR AND CONFIRMATORY
LIGHT (PHASES 2 & 5)
LED LUMINAIRE
2-TYPE D SIGNS
1-R10-X12 SIGN (ADJACENT TO HEAD 5-1)
1-ELECTRICAL OUTLET
3" PVC TO HH 14:
2-12/C#14
2-4/C#14
1-3/C#14 (LUM)
1-3/C#14
1-3/C#20
1-2/C#14
1-1/C#6 INS GR

BY	DATE	REVISIONS
EJA	09-09-15	AS-BUILT PLAN OF SP 7001-100

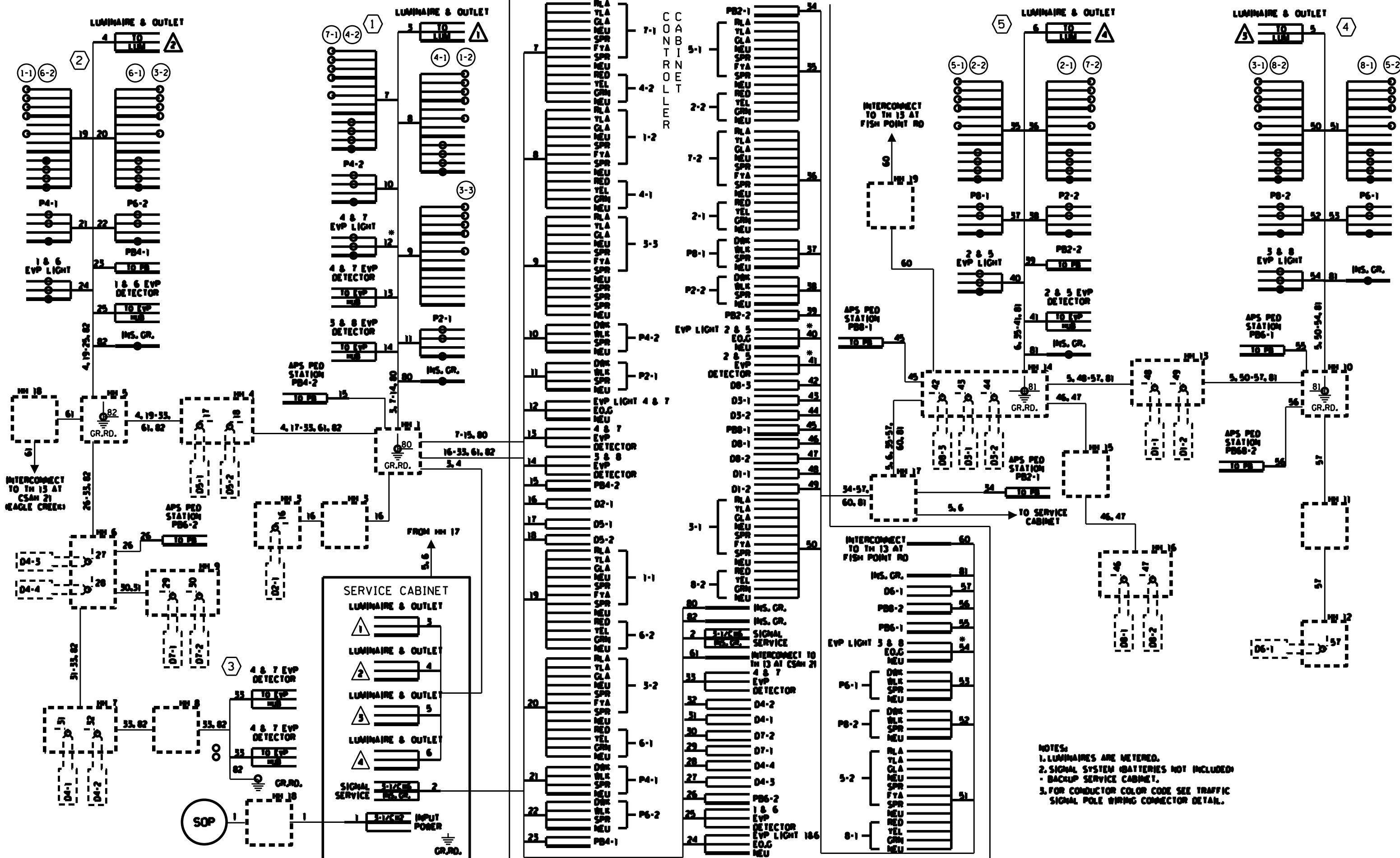
SYSTEM ID: 20205	T.E.
METER ADDRESS: 4995 160TH ST SE	
MASTER ID:	T.E.

POLE NOTES AND MATCHLINE LAYOUT
TH 13 AT CSAH 44 (160TH ST)/MAIN AVE
IN PRIOR LAKE, SCOTT COUNTY

S.A.P. NO.	DRAWN BY:	C&D BY:	DATE:
CERTIFIED BY: _____	LIC. NO. _____	DATE: _____	
STATE PROJ. NO.	(T.H. 13)	SHEET NO.	2 OF 5 SHEETS

PLOTTED/REVISED: ssssp@DATE: ssssp

DISTRICT: sssDISTRICT.es
IPLLOT NAME: sssIPLLOTNAME.es
PATH & FILENAME: sssPATH/FILENAME.es



NOTES:
 1. LUMINAIRES ARE METERED.
 2. SIGNAL SYSTEM (BATTERIES NOT INCLUDED) - BACKUP SERVICE CABINET.
 3. FOR CONDUCTOR COLOR CODE SEE TRAFFIC SIGNAL POLE WIRING CONNECTOR DETAIL.

BY	DATE	REVISIONS
EJA	09-09-15	AS-BUILT PLAN OF SP 7001-108

SYSTEM ID: 20205
 METER ADDRESS: 4995 160TH ST SE
 MASTER ID:

WIRING DIAGRAM
 TH 13 AT CSAH 44 (160TH ST)/MAIN AVE
 IN PRIOR LAKE, SCOTT COUNTY

S.A.P. NO.	DRAWN BY:	CHKD BY:	DATE:

CERTIFIED BY: _____ LIC. NO. _____ DATE: _____

STATE PROJ. NO. (T.H.13) SHEET NO. 4 OF 5 SHEETS

PLOTTED/REVISED: \$\$\$@DATE\$\$\$\$

DISTRICT: se0DISTRICT.es
 I/PLOT NAME: \$\$\$@PLOTNAME\$\$\$\$
 PATH & FILENAME: \$\$\$@PATHFILENAME\$\$\$\$

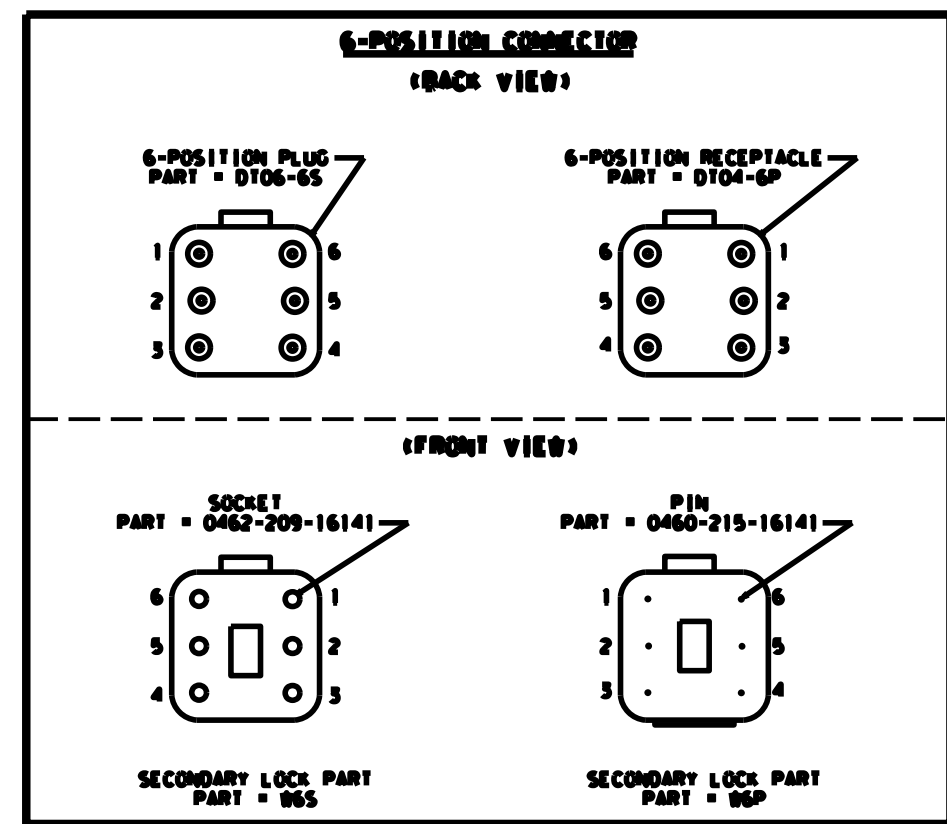
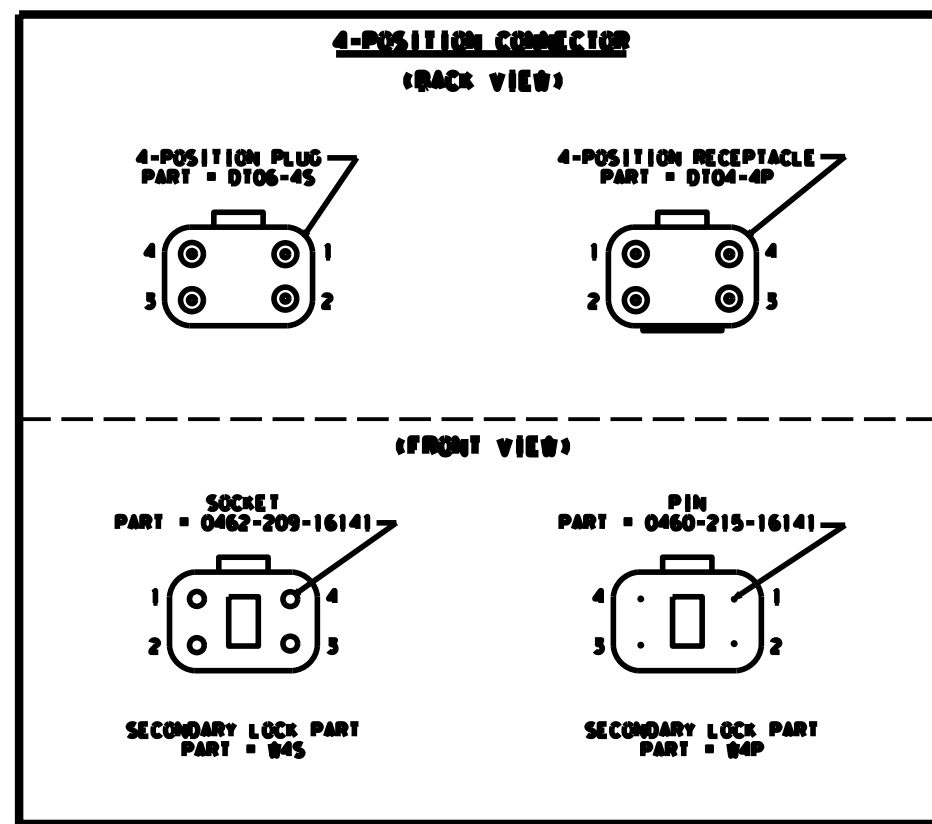
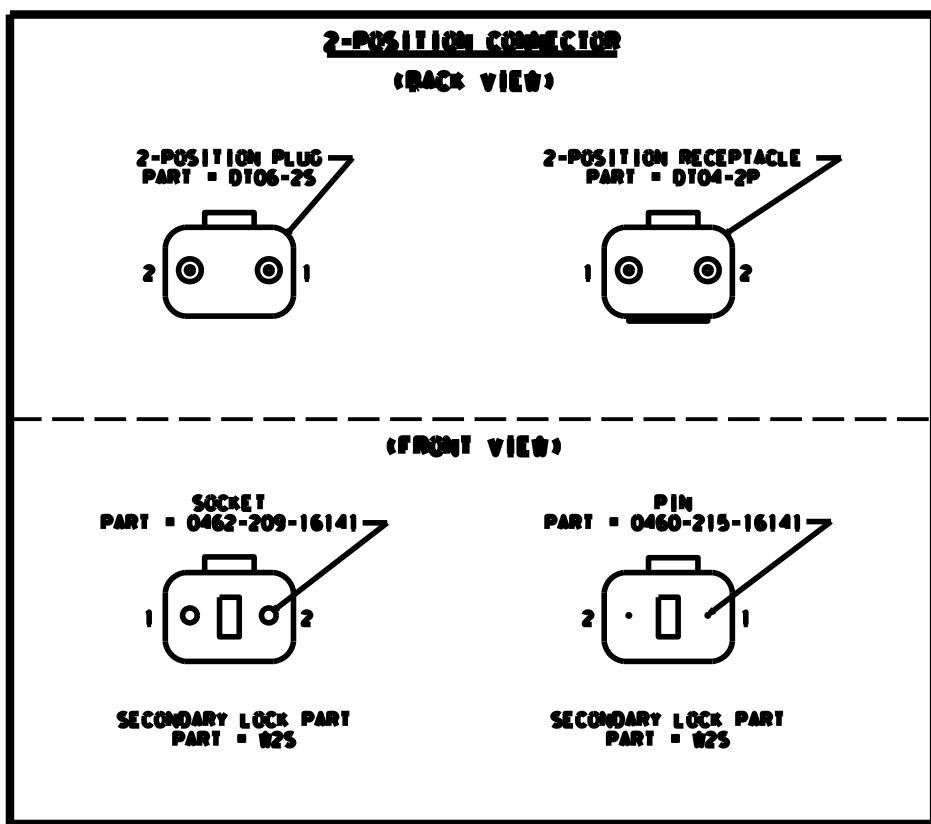


TABLE 1 2 Position DT Connector (As Needed)

Wire to Control Cabinet	Connector pin #	Wire to Signal Indication	Signal Indication
BLK	1	BLK	PB (if Required)
WH or CL	2	WH or CL	NEU

TABLE 2a 4 Position DT Connector (3 Section Head/DM/BLK)

Wire to Control Cabinet	Connector pin #	Wire to Signal Indication	Signal Indication
R or R/BLK or BLK	1	R	RED or DMK
O or O/BLK or BLK/WH or BLK	2	BLK/R	YEL or BLK
BL or BL/BLK or BLK/R or BLK	3	BLK	GRN or SPR
WH or WH/BLK or WH/R	4	WH	NEU

TABLE 3 6 Position DT Connector (4 and 5 Section Heads)

Wire to Control Cabinet	Connector pin #	Wire to Signal Indication	Signal Indication
R	1	R	RED
O	2	O	YEL
BL	3	BL	GRN
WH	4	WH	NEU
O/BLK or BLK/R (5/C)	5	BLK/R	YLA or FYA
BL/BLK or BLK (5/C)	6	BLK	GLA

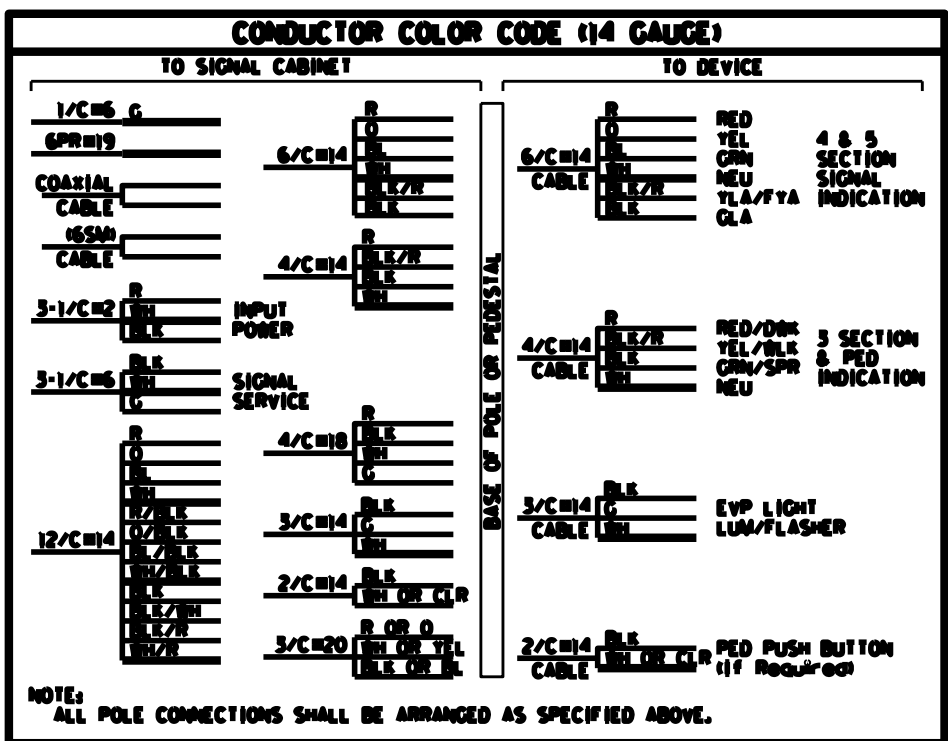


TABLE 2b 4 Position DT Connector (EVP LHT/LUM/Flasher)

Wire to Control Cabinet	Connector pin #	Wire to Signal Indication	Signal Indication
BLK	1	BLK	EVP LHT or LUM or RED or YEL
(NOT USED)	2	(NOT USED)	(NOT USED) (See Note 8b)
G	3	G	E.O.G
WH	4	WH	NEU

- NOTES:**
- DT04-P RECEPTACLE SHALL BE TERMINATED TO THE WIRING HARNESS RUNNING FROM THE BASE/JUNCTION BOX OF THE POLE TO SIGNAL INDICATIONS.
 - DT06-.5 PLUG SHALL BE TERMINATED TO THE CABLES RUNNING FROM THE TRAFFIC SIGNAL CABINET TO THE BASE/JUNCTION BOX OF THE POLE.
 - THERE SHALL BE A MINIMUM OF 24 INCHES OF SLACK ON EACH CABLE IN EVERY POLE BASE/JUNCTION BOX.
 - STRIP A MAXIMUM OF 6 INCHES OF THE OUTER JACKET OF EACH SIGNAL CABLE.
 - STRIP .250 INCHES OF INSULATION FROM EACH INDIVIDUAL CONDUCTOR.
 - CRIMP PINS OR SOCKETS USING RATCHETING TYPE CRIMPING TOOL MDT-48-00. NO OTHER CRIMPING TOOL WILL BE ALLOWED.
 - WIRES MUST BE TERMINATED AS DETAILED IN TABLES 1 THRU 3 DEPENDING ON WIRE COUNT.
 - ANY UNUSED PIN MUST HAVE A SEALING PLUG PLACED IN BOTH THE PLUG & RECEPTACLE (PART = 114017).
 - LABEL EACH HALF OF THE CONNECTOR (PLUG AND RECEPTACLE) WITH THE DEVICE DESIGNATION (AS INDICATED IN THE WIRING DIAGRAM) USING A PERMANENT BLACK MARKER.

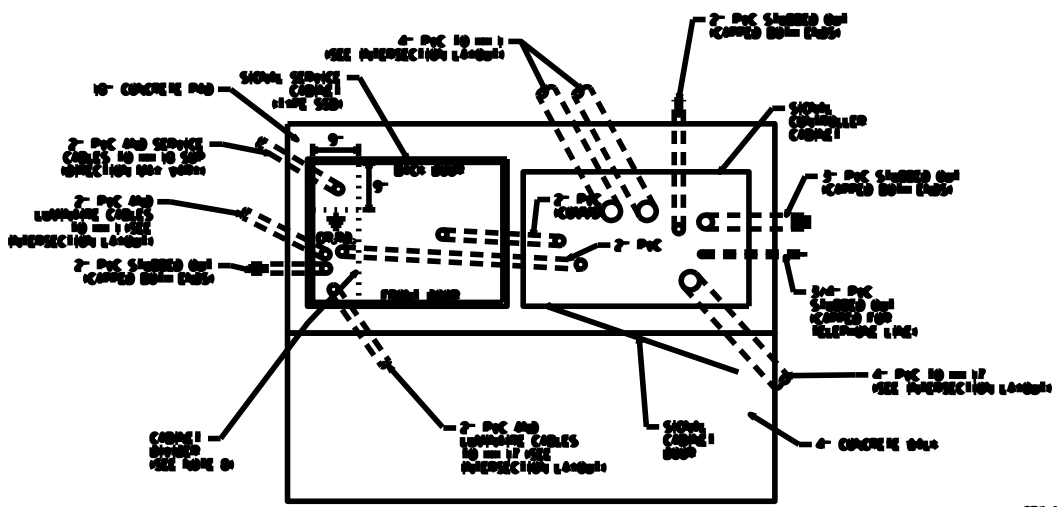
Wire Color Code Key

R	Red
O	Orange
BL	Blue
WH	White
BLK	Black
BRN	Brown
CL	Clear
G	Green
R/BLK	Red with Black Stripe
O/BLK	Orange with Black Stripe
BL/BLK	Blue with Black Stripe
WH/BLK	White with Black Stripe
WH/R	White with Red Stripe
BLK/WH	Black with White Stripe
BLK/R	Black with Red Stripe

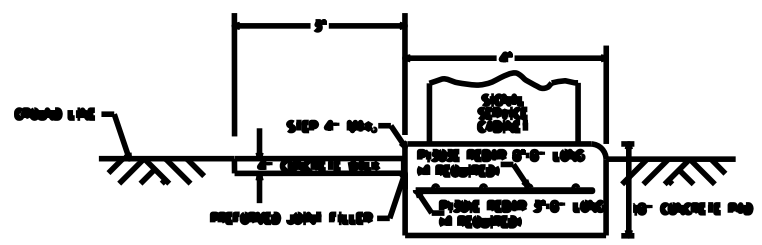
EQUIPMENT PAD WITH CONTROLLER CABINET AND SERVICE CABINET

PLAN VIEW

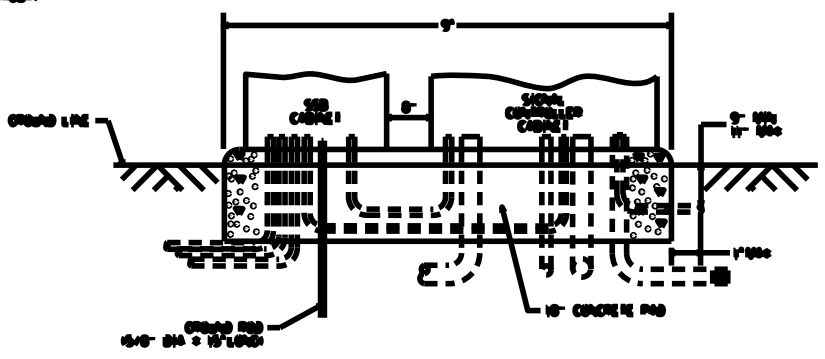
SEE INSPECTION LABEL FOR CABLE INFORMATION AND TO SCALE



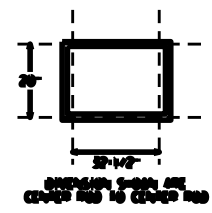
SIDE VIEW



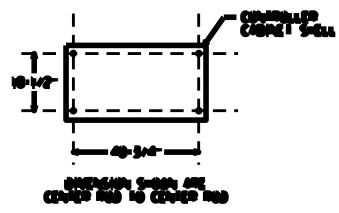
FRONT VIEW



S.S.B. SERVICE CABLE BOLT PATTERN



CONTROLLER CABINET TYPE - P & R BOLT PATTERN



PLOTTED/REVISED: 08/04/2005

DISTRICT 3: SUBCONTRACTOR
PLOT NAME: SUBPLOT-NAME.GES
PATH & FILENAME: SUBPLOT-FILENAME.GES

NO.	DATE	REVISIONS	DESIGNED BY	CHECKED BY	DATE	SCALE	PROJECT NO.	SHEET NO.	TOTAL SHEETS
1									
2									
3									

EQUIPMENT PAD LAYOUT
 10 1/2" DIA. CONCRETE PAD
 2" CONCRETE BASE
 10" DIA. CONCRETE PAD

S.S.B. Inc. 11.11.13 SHEET NO. 5 OF 5 SHEETS