

PLOTTED/REVISED: 2-MAY-2023

DISTRICT *: Metro
 PLOT NAME: layout
 FILENAME: Projects\DM_FROSO07\000007TrafficSignals\87_30 TH7 @ WOODLAND-TONKAWOOD RD IT34994\IT34994.sgl

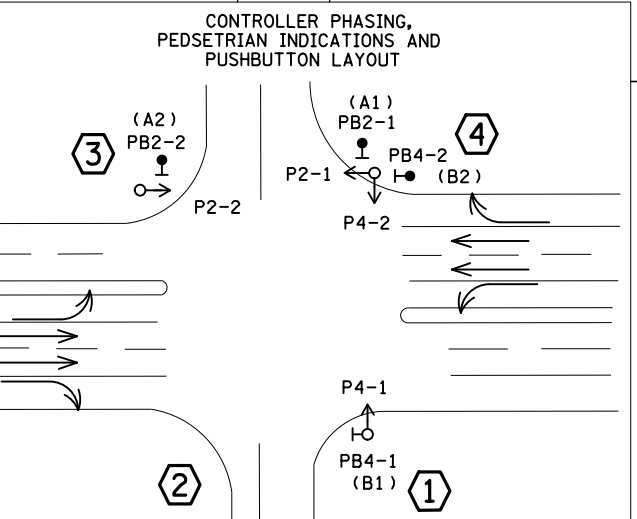
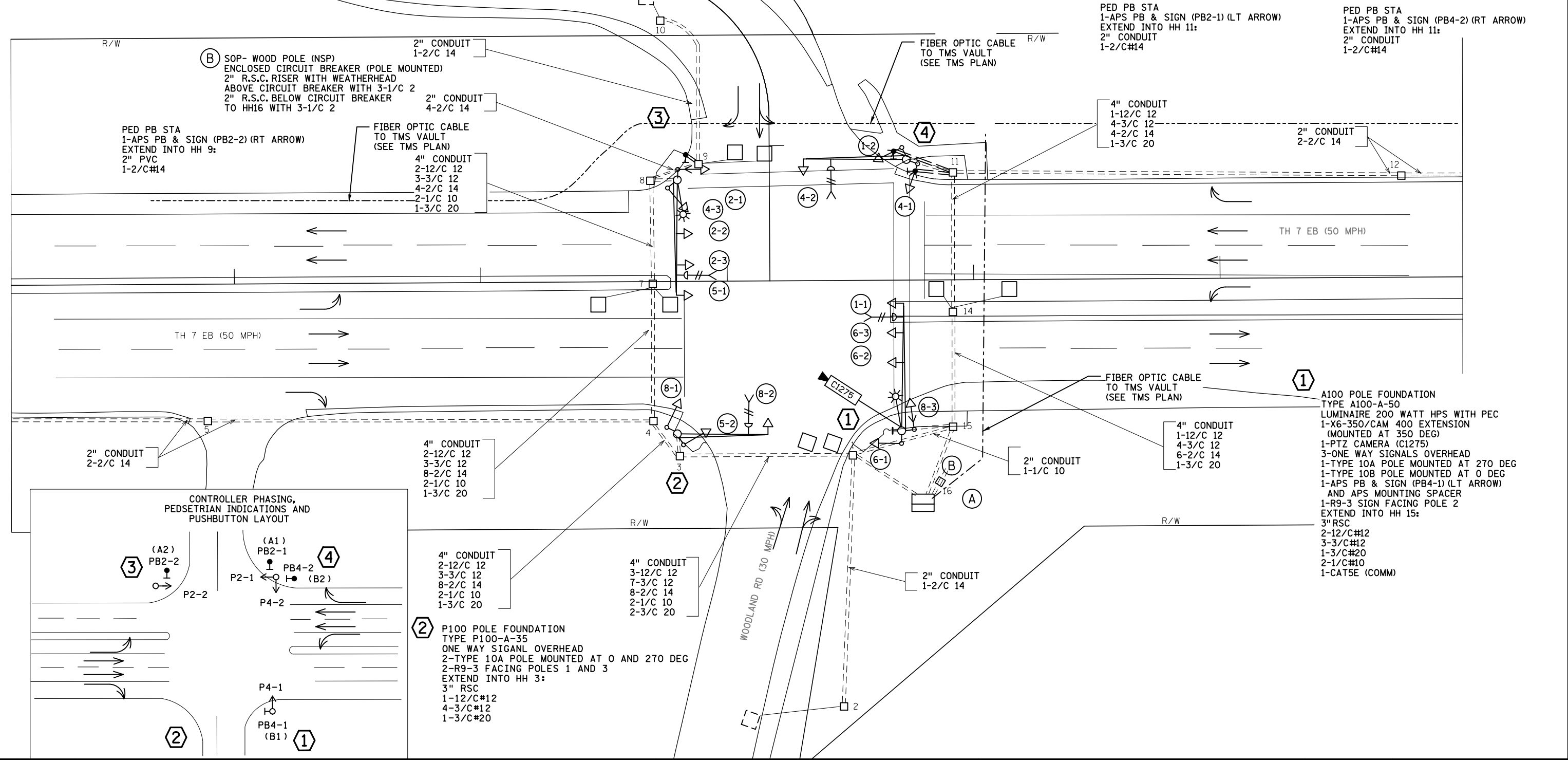
PVC LOOP DETECTOR CHART			DISTANCE FROM STOP BAR
DESIGNATION	PHASE	SIZE IN FT.	
D1-1, D1-2	1	6X6	5' AND 35'
D5-1, D5-2	5	6X6	5' AND 35'
D2-1, D2-2	2	6X6	400'
D6-1, D6-2	6	6X6	400'
D4-1	4	6X6	120'
D4-2	4	6X6	5'
D4-3	4	6X6	5'
D8-1	8	6X6	90'
D8-2	8	6X6	5'
D8-3	8	6X6	5'

4 P100 POLE FOUNDATION
 TYPE P100-A-40
 ONE WAY SIGNAL (OVERHEAD)
 2-TYPE 10B (POLE MOUNTED AT 0° AND 270°)
 2-C.D. PEDESTRIAN HEADS
 EXTEND INTO HH 11:
 3" R.S.C.
 1-12/C 12
 4-3/C 12
 1-3/C 20

A EQUIPMENT PAD (SEE DETAILS)
 SERVICE CABINET (SSB) W/ BATTERY BACKUP SYSTEM AND BATTERIES
 CONTROLLER AND CABINET
 SERVICE EQUIPMMT (PAD MOUNTED)
 STUB OUT AND CAP 3" R.S.C. EAST AND WEST
 CABINET TO HH1
 4" CONDUIT
 3-12/C 12
 7-3/C 12
 11-2/C 14
 2-3/C 20
 METER TO HH16
 2" R.S.C.
 3-1/C 2
 LOAD CENTER TO CABINET
 1 1/4" R.S.C.
 2-1/C 6
 1-1/C 6 BR. GR.
 LOAD CENTER TO HH15
 1 1/4" R.S.C.
 4-1/C 10
 CABINET TO HH15
 4" CONDUIT
 3-12/C 12
 7-3/C 12
 6-2/C 14
 2-3/C 20
 1-CATE5 (COMM)

3 A100 POLE FOUNDATION
 TYPE A100-A-45-D40-9 (DAVIT AT 355°)
 LUMINAIRE 200 WATT HPS WITH PEC
 3-ONE WAY SIGNALS OVERHEAD
 1-TYPE 10A POLE MOUNTED AT 0 DEG
 1-TYPE 10B POLE MOUNTED AT 270 DEG
 1-C.D. PEDESTRIAN HEAD
 1-R9-3 FACING POLE #2
 EXTEND INTO HH 15:
 3" RSC
 2-12/C#12
 3-3/C#12
 1-3/C#20
 2-1/C#10

SIGNAL HEAD CHART			
FACE	R	Y	G
1-1,1-2	←	←	←
2-1,2-2,2-3	●	●	●
4-1,4-2,4-3	●	●	●
5-1,5-2	←	←	←
6-1,6-2,6-3	●	●	●
8-1,8-2,8-3	●	●	●



2 P100 POLE FOUNDATION
 TYPE P100-A-35
 ONE WAY SIGNAL OVERHEAD
 2-TYPE 10A POLE MOUNTED AT 0 AND 270 DEG
 2-R9-3 FACING POLES 1 AND 3
 EXTEND INTO HH 3:
 3" RSC
 1-12/C#12
 4-3/C#12
 1-3/C#20

1 A100 POLE FOUNDATION
 TYPE A100-A-50
 LUMINAIRE 200 WATT HPS WITH PEC
 1-X6-350/CAM 400 EXTENSION (MOUNTED AT 350 DEG)
 1-PTZ CAMERA (C1275)
 3-ONE WAY SIGNALS OVERHEAD
 1-TYPE 10A POLE MOUNTED AT 270 DEG
 1-TYPE 10B POLE MOUNTED AT 0 DEG
 1-APS PB & SIGN (PB4-1) (LT ARROW) AND APS MOUNTING SPACER
 1-R9-3 SIGN FACING POLE 2
 EXTEND INTO HH 15:
 3" RSC
 2-12/C#12
 3-3/C#12
 1-3/C#20
 2-1/C#10
 1-CAT5E (COMM)

BY	DATE	REVISIONS
MJB	3/17/22	AS BUILT OF SP 2706-239
MJB	3/17/22	ADDED BATTERY BACKUP TO CABINET NOTES
SJK	5/2/23	PTZ CAMERA UPGRADE SP 8825-890

SYSTEM ID: 1734994 T.E.
 METER ADDRESS: 4800 WOODLAND ROAD
 OLD SYSTEM ID: 20138

**INTERSECTION LAYOUT
 T.H. 7 AT WOODLAND RD./TONKAWOOD RD.
 IN MINNETONKA, HENNEPIN COUNTY**

S.A.P. NO. 216-111-005	DRAWN BY:	CKD BY:	DATE:
CERTIFIED BY _____	LIC. NO. _____	DATE: _____	
STATE PROJ. NO. 2706-239 (T.H.7)		SHEET NO. 1 OF 2 SHEETS	

PLOTTED/REVISED: 2-MAY-2023

DISTRICT *: Metro
PLOT NAME: wiring diagram
FILENAME: Projects\DM_PROS\007\0000\Traffic\Signals\187.30 TH7 @ WOODLAND-TONKAWOOD RD IT34994\IT34994.sgl

CONDUCTOR COLOR CODING

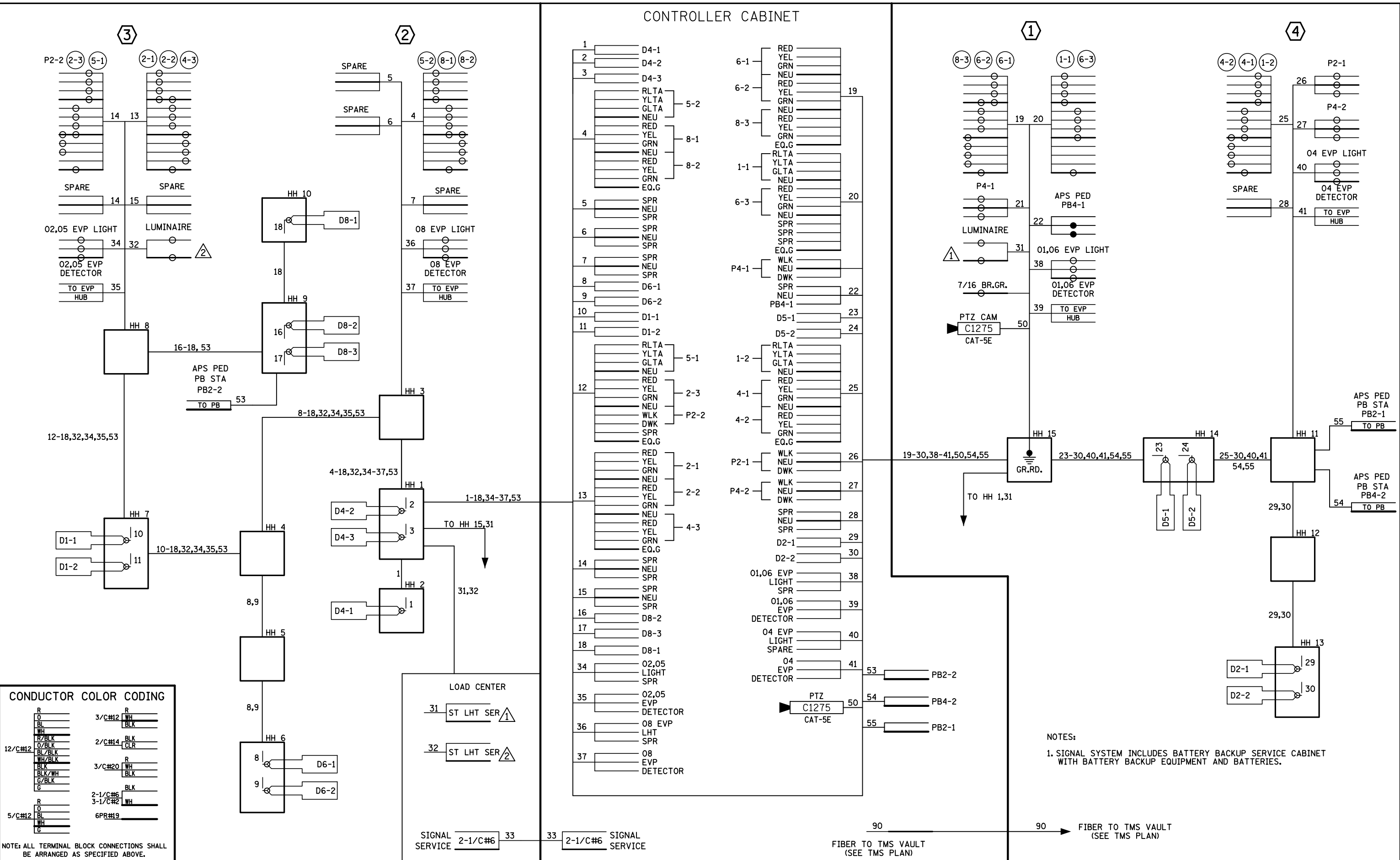
R		R
O	3/C#12	WH
BL		BLK
WH		BLK
R/BLK	2/C#14	BLK
O/BLK		CLR
BL/BLK		CLR
WH/BLK		CLR
BLK	3/C#20	R
BLK/WH		WH
G/BLK		BLK
G		WH
R	2-1/C#6	BLK
O	3-1/C#2	WH
BL		BLK
WH		WH
G	6PR#19	

NOTE: ALL TERMINAL BLOCK CONNECTIONS SHALL BE ARRANGED AS SPECIFIED ABOVE.

BY	DATE	REVISIONS
MJB	3/17/22	AS BUILT OF SP 2706-239
MJB	3/17/22	ADDED BATTERY BACKUP NOTES TO DIAGRAM
SJK	5/2/23	PTZ CAMERA UPGRADE

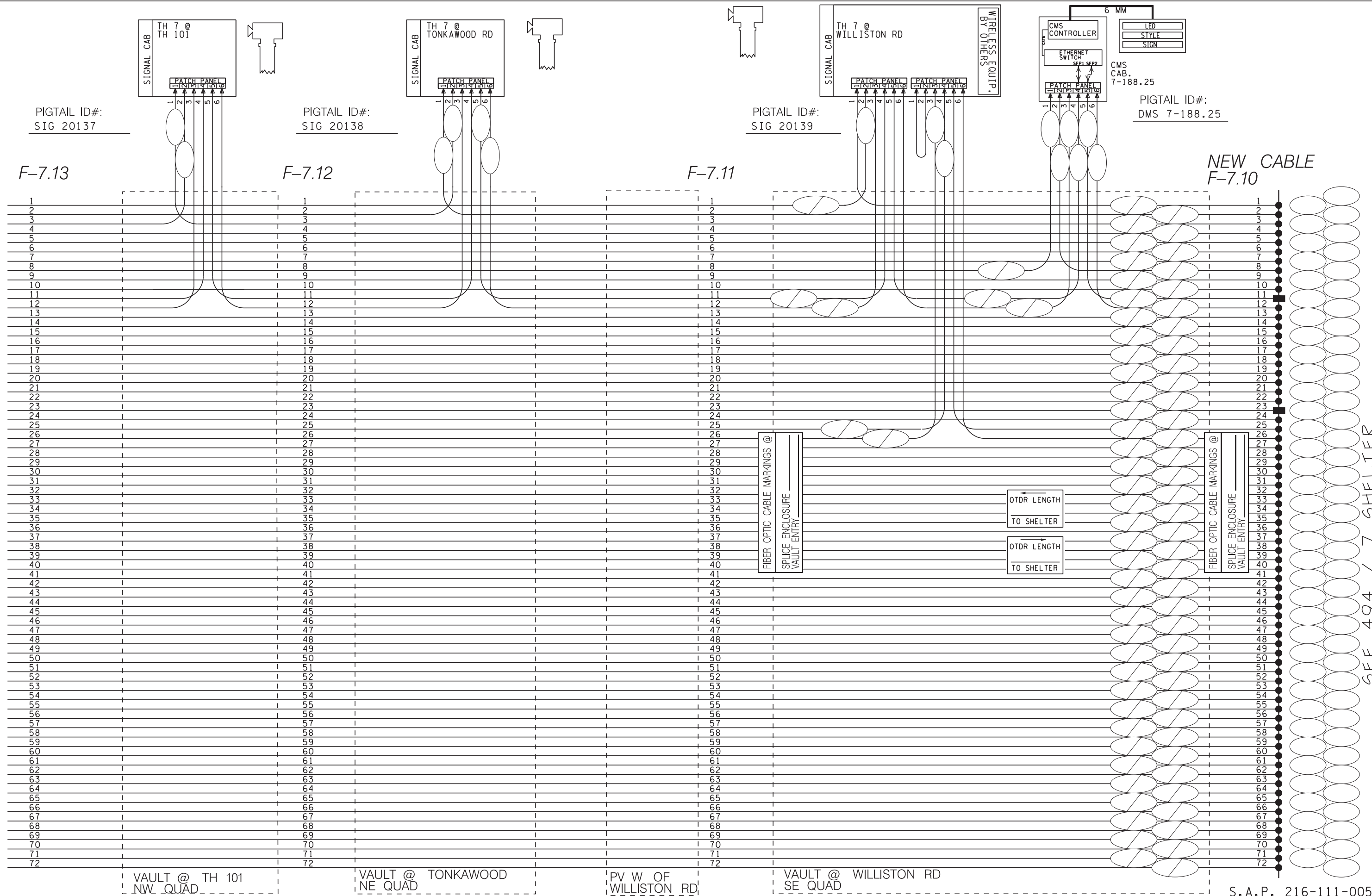
SYSTEM ID: 1734994	T.E.
METER ADDRESS: 4800 WOODLAND ROAD	
OLD SYSTEM ID: 20138	

WIRING DIAGRAM T.H. 7 AT WOODLAND RD./TONKAWOOD RD. IN MINNETONKA, HENNEPIN COUNTY



NOTES:
1. SIGNAL SYSTEM INCLUDES BATTERY BACKUP SERVICE CABINET WITH BATTERY BACKUP EQUIPMENT AND BATTERIES.

S.A.P. NO. 216-111-005	DRAWN BY:	CKD BY:	DATE:
CERTIFIED BY _____	LIC. NO. _____	DATE: _____	
STATE PROJ. NO. 2706-239 (T.H.7)		SHEET NO. 2 OF 2 SHEETS	



SEE 494 / 7 SHELTER

S.A.P. 216-111-005

PLOTTED/REVISED: 2/5/2014

PVC LOOP DETECTOR CHART			DISTANCE FROM STOP BAR
DESIGNATION	PHASE	SIZE IN FT.	
D1-1, D1-2	1	6x6	5' AND 35'
D5-1, D5-2	5	6x6	5' AND 35'
D2-1, D2-2	2	6x6	400'
D6-1, D6-2	6	6x6	400'
D4-1	4	6x6	120'
D4-2	4	6x6	5'
D4-3	4	6x6	5'
D8-1	8	6x6	90'
D8-2	8	6x6	5'
D8-3	8	6x6	5'

- (1) CALL AND EXTEND
- (2) DELAY CALL, IMMEDIATE EXTEND
- (3) EXTEND ONLY

④ P100 POLE FOUNDATION
 TYPE P100-A-40
 ONE WAY SIGNAL (OVERHEAD)
 2-TYPE 10B (POLE MOUNTED AT 0° AND 270°)
 2-C.D. PEDESTRIAN HEADS

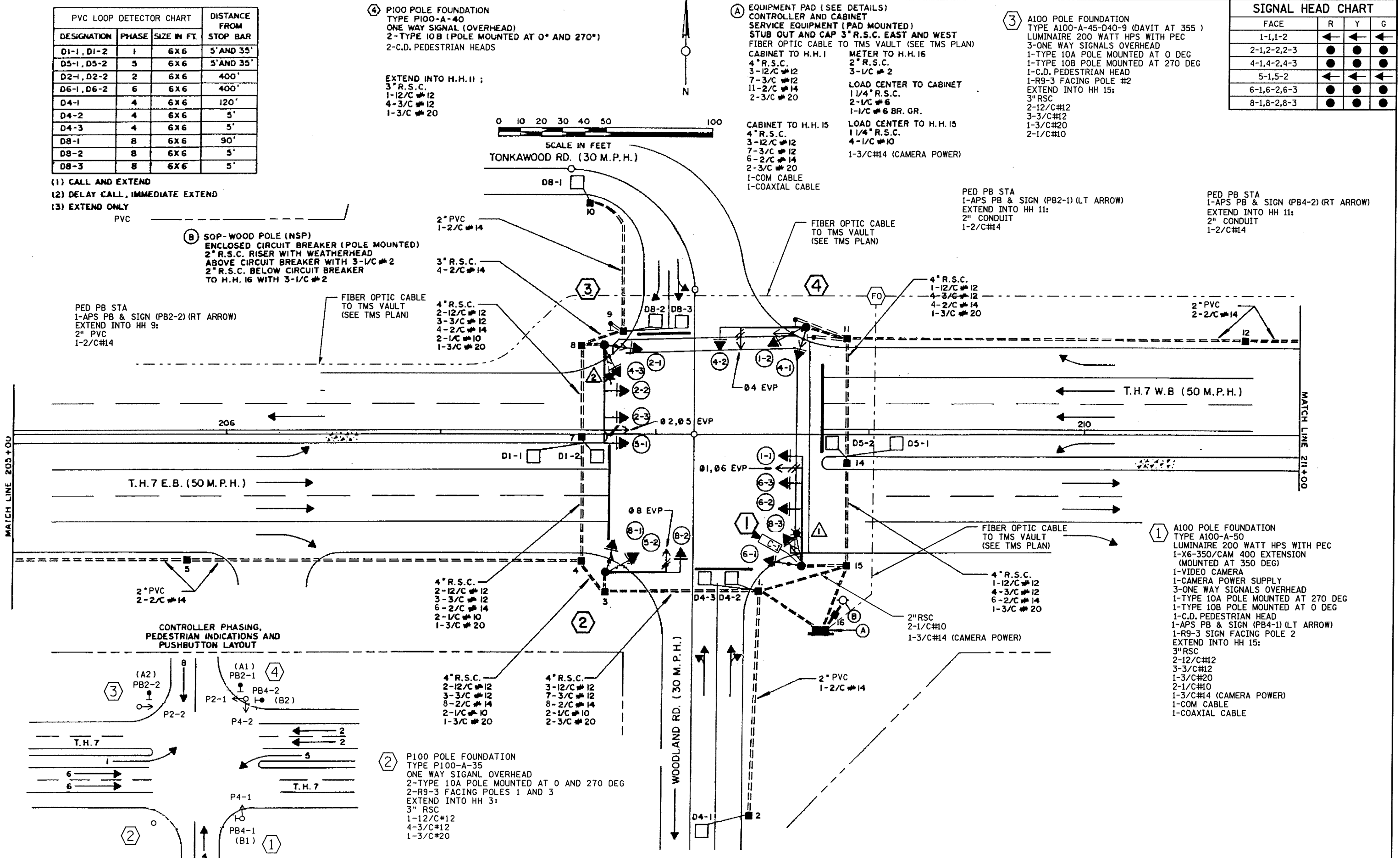
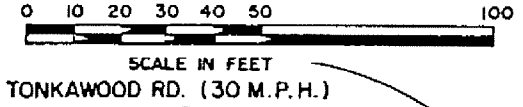
EXTEND INTO H.H. 11;
 3" R.S.C.
 1-12/C #12
 4-3/C #12
 1-3/C #20

⑤ EQUIPMENT PAD (SEE DETAILS)
 CONTROLLER AND CABINET
 SERVICE EQUIPMENT (PAD MOUNTED)
 STUB OUT AND CAP 3" R.S.C. EAST AND WEST
 FIBER OPTIC CABLE TO TMS VAULT (SEE TMS PLAN)
 CABINET TO H.H. 1 METER TO H.H. 16
 4" R.S.C.
 3-12/C #12
 7-3/C #12
 11-2/C #14
 2-3/C #20

CABINET TO H.H. 15
 4" R.S.C.
 3-12/C #12
 7-3/C #12
 6-2/C #14
 2-3/C #20
 1-COM CABLE
 1-COAXIAL CABLE

③ A100 POLE FOUNDATION
 TYPE A100-A-45-D40-9 (DAVIT AT 355°)
 LUMINAIRE 200 WATT HPS WITH PEC
 3-ONE WAY SIGNALS OVERHEAD
 1-TYPE 10A POLE MOUNTED AT 0 DEG
 1-TYPE 10B POLE MOUNTED AT 270 DEG
 1-C.D. PEDESTRIAN HEAD
 1-R9-3 FACING POLE #2
 EXTEND INTO HH 15:
 3" RSC
 2-12/C #12
 3-3/C #12
 1-3/C #20
 2-1/C #10

SIGNAL HEAD CHART			
FACE	R	Y	G
1-1,1-2	←	←	←
2-1,2-2,2-3	●	●	●
4-1,4-2,4-3	●	●	●
5-1,5-2	←	←	←
6-1,6-2,6-3	●	●	●
8-1,8-2,8-3	●	●	●



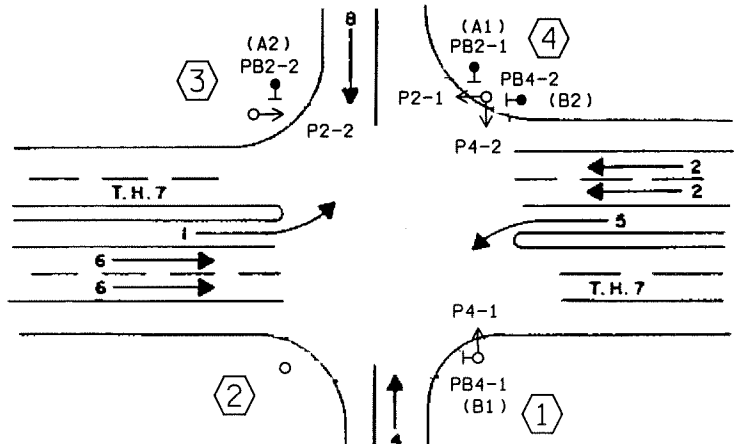
PED PB STA
 1-APS PB & SIGN (PB2-2) (RT ARROW)
 EXTEND INTO HH 9:
 2" PVC
 1-2/C #14

② SOP WOOD POLE (NSP)
 ENCLOSED CIRCUIT BREAKER (POLE MOUNTED)
 2" R.S.C. RISER WITH WEATHERHEAD
 ABOVE CIRCUIT BREAKER WITH 3-1/C #2
 2" R.S.C. BELOW CIRCUIT BREAKER
 TO H.H. 16 WITH 3-1/C #2

PED PB STA
 1-APS PB & SIGN (PB2-1) (LT ARROW)
 EXTEND INTO HH 11:
 2" CONDUIT
 1-2/C #14

PED PB STA
 1-APS PB & SIGN (PB4-2) (RT ARROW)
 EXTEND INTO HH 11:
 2" CONDUIT
 1-2/C #14

CONTROLLER PHASING,
 PEDESTRIAN INDICATIONS AND
 PUSHBUTTON LAYOUT



② P100 POLE FOUNDATION
 TYPE P100-A-35
 ONE WAY SIGNAL OVERHEAD
 2-TYPE 10A POLE MOUNTED AT 0 AND 270 DEG
 2-R9-3 FACING POLES 1 AND 3
 EXTEND INTO HH 3:
 3" RSC
 1-12/C #12
 4-3/C #12
 1-3/C #20

① A100 POLE FOUNDATION
 TYPE A100-A-50
 LUMINAIRE 200 WATT HPS WITH PEC
 1-X6-350/CAM 400 EXTENSION
 (MOUNTED AT 350 DEG)
 1-VIDEO CAMERA
 1-CAMERA POWER SUPPLY
 3-ONE WAY SIGNALS OVERHEAD
 1-TYPE 10A POLE MOUNTED AT 270 DEG
 1-TYPE 10B POLE MOUNTED AT 0 DEG
 1-C.D. PEDESTRIAN HEAD
 1-APS PB & SIGN (PB4-1) (LT ARROW)
 1-R9-3 SIGN FACING POLE 2
 EXTEND INTO HH 15:
 3" RSC
 2-12/C #12
 3-3/C #12
 1-3/C #20
 2-1/C #10
 1-3/C #14 (CAMERA POWER)
 1-COM CABLE
 1-COAXIAL CABLE

DISTRICT #: METRO
 PLOT NAME: T20138MLR_sgl
 PATH & FILENAME: IP_PWP-90779756.T20138MLR_sgl.dgn

BY: SJK	DATE: 02-06-14	REVISIONS: AS-BUILT PLAN SP 8825-445	SYSTEM ID: 20138	T.E. 5814	S.A.P. NO.	DRAWN BY: MAS	CKD BY: GAK	DATE: 4-12-13
			METER ADDRESS: 4800 WOODLAND ROAD		CERTIFIED BY: _____	LIC. NO. 26829		DATE: _____
			MASTER ID: T.E.		STATE PROJ. NO.		SHEET NO. 1 OF 2 SHEETS	

PLOTTED/REVISED: 2/4/2014

DISTRICT #: METRO
IPLOT NAME: T20138MLR_sgl
PATH & FILENAME: IP_PWP-90779756T20138MLR_sgl.dgn

CONTROLLER CABINET

