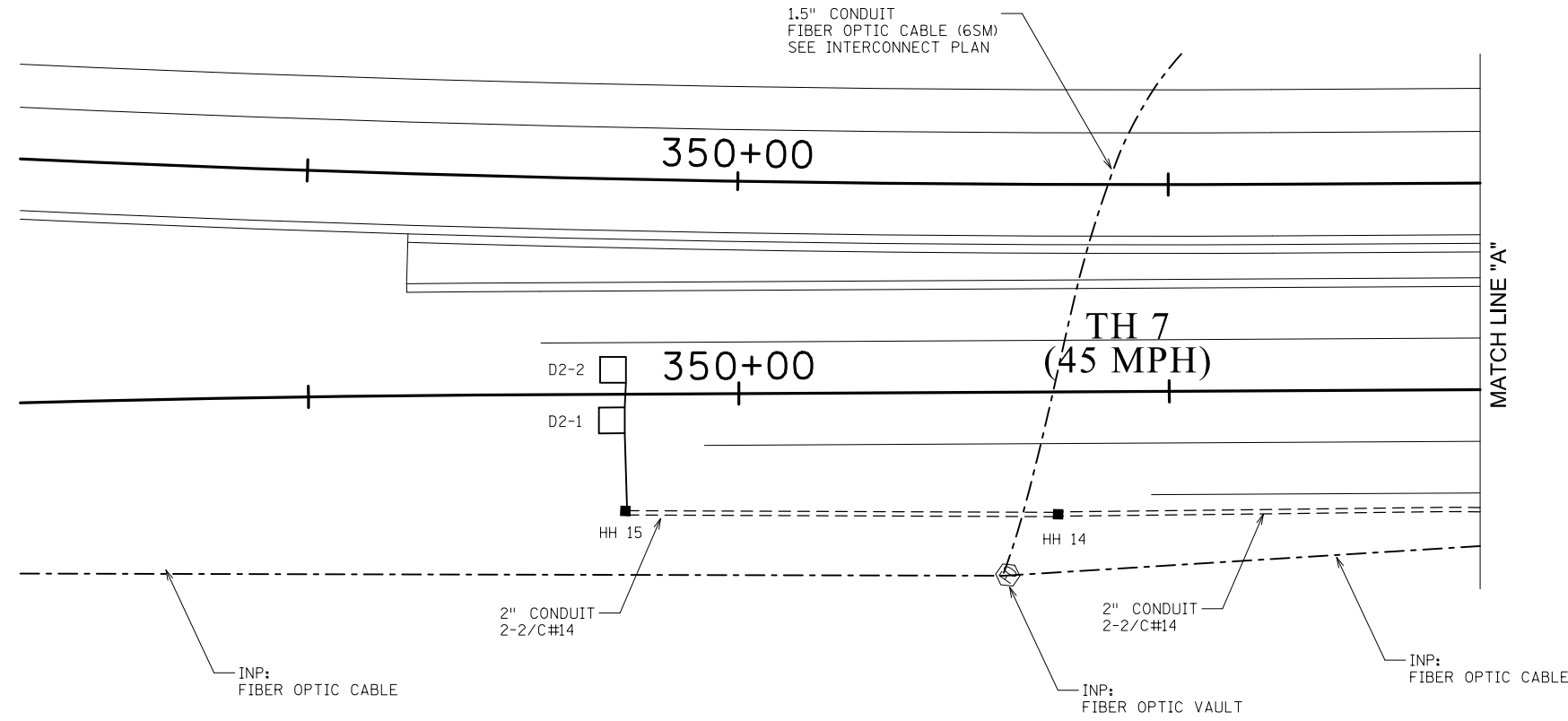
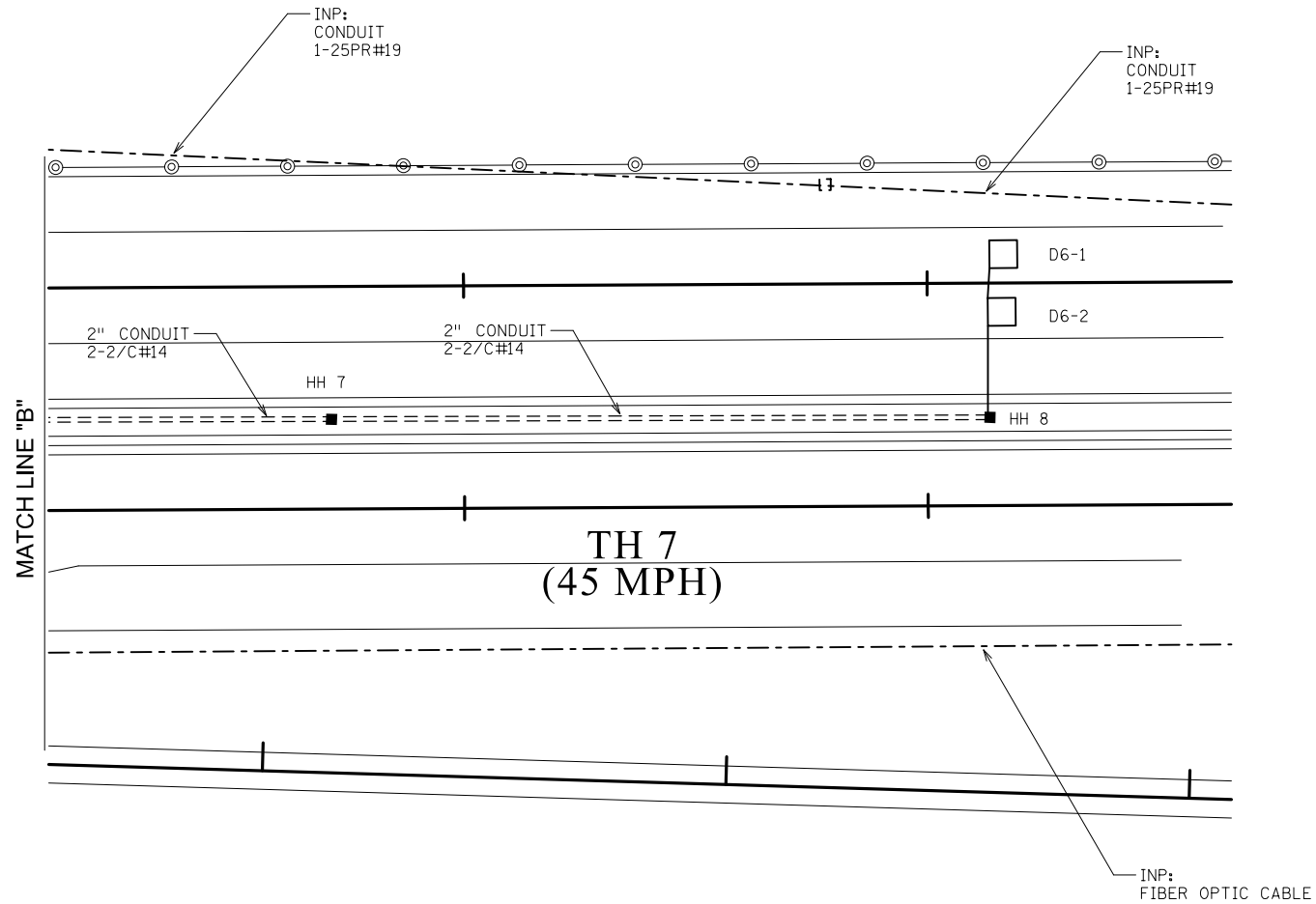




PLOTTED/REVISED: 24-MAY-2023

DISTRICT \*: Metro  
 IPLOT NAME: match lines  
 FILENAME: Projects\DM\_PROS\007\0000\Traffic\Signals\90\JO TH7 @ (61) SHADY OAK RD 1734996\T17-34996\_sgl.dgn



BY	DATE	REVISIONS
SJK	5/24/23	PTZ CAMERA UPGRADE

SYSTEM ID: 1734996 T.E.  
 METER ADDRESS: 4050 SHADY OAK RD  
 OLD SYSTEM ID:

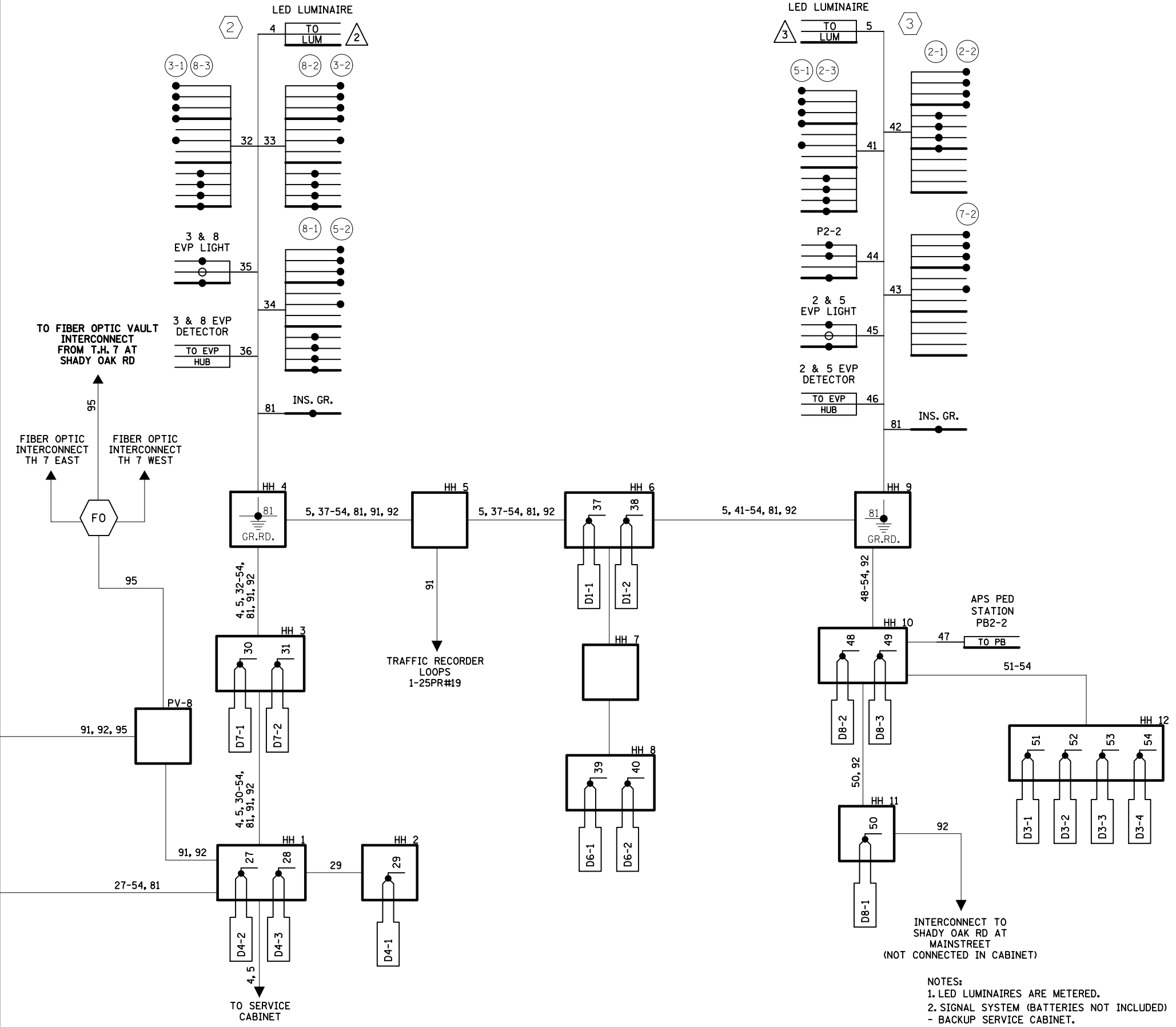
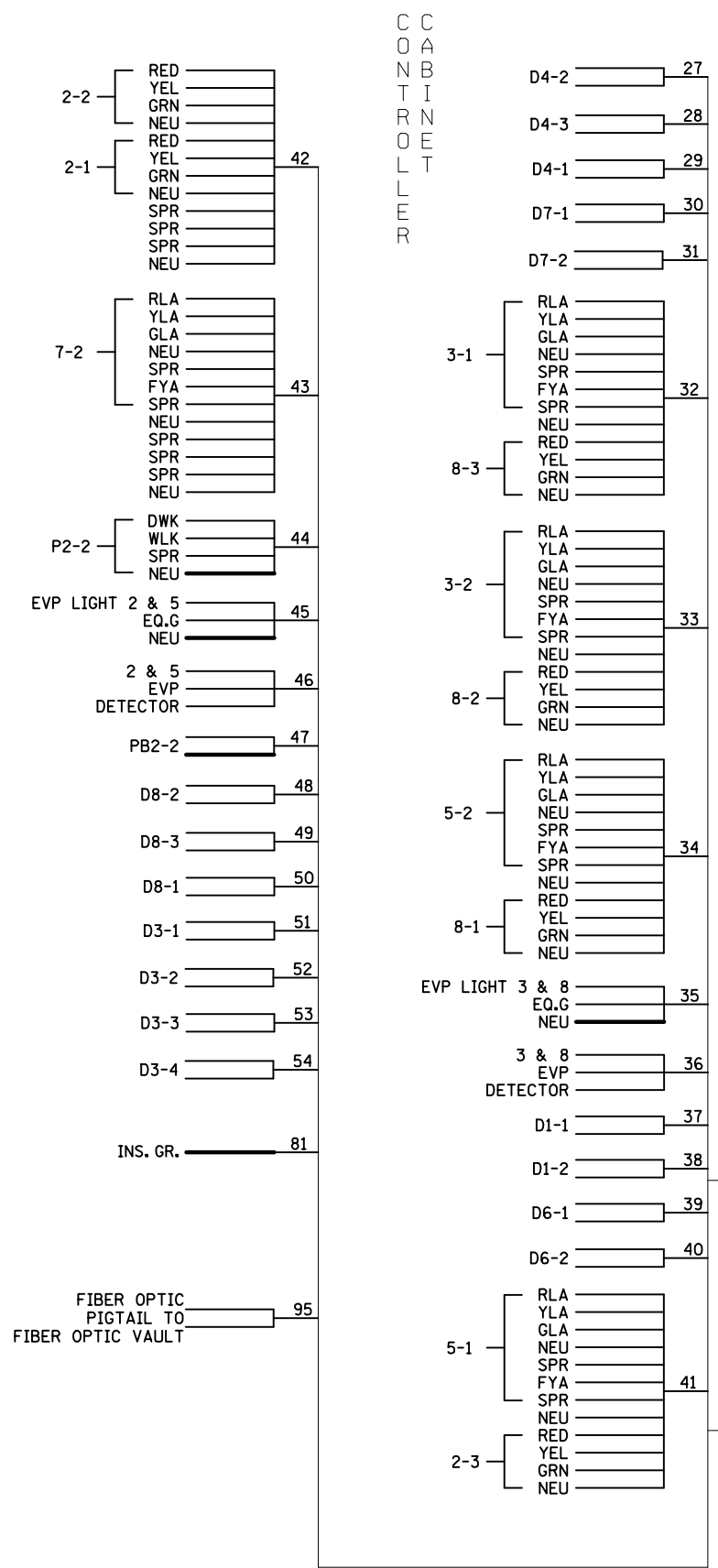
**MATCH LINES  
 TH 7 AT SHADY OAK RD  
 IN MINNETONKA, HENNEPIN COUNTY**

S.A.P. NO.	DRAWN BY:	CKD BY:	DATE:
CERTIFIED BY _____	LIC. NO. _____	DATE: _____	
STATE PROJ. NO.	(T.H.7)	SHEET NO.	2 OF 4 SHEETS



PLOTTED/REVISED: 24-MAY-2023

DISTRICT \*: Metro  
 IPLOT NAME: wire 2  
 FILENAME: Projects\DM\_FOS\007\00000\Traffic\Signal\90\JO TH 7 @ (61) SHADY OAK RD 1734996\T7-34996.sgl.dgn



NOTES:  
 1. LED LUMINAIRE ARE METERED.  
 2. SIGNAL SYSTEM (BATTERIES NOT INCLUDED) - BACKUP SERVICE CABINET.

BY	DATE	REVISIONS
SJK	5/24/23	PTZ CAMERA UPGRADE

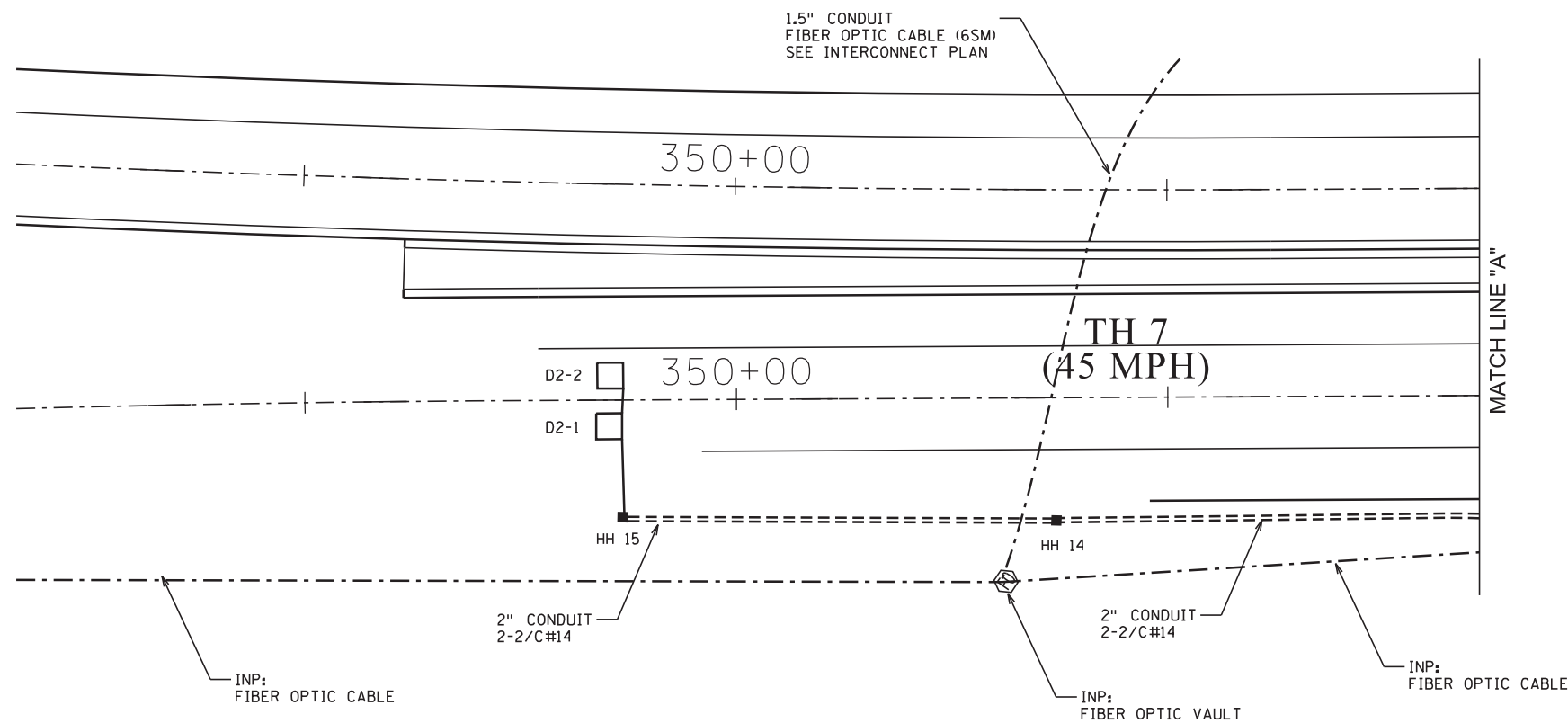
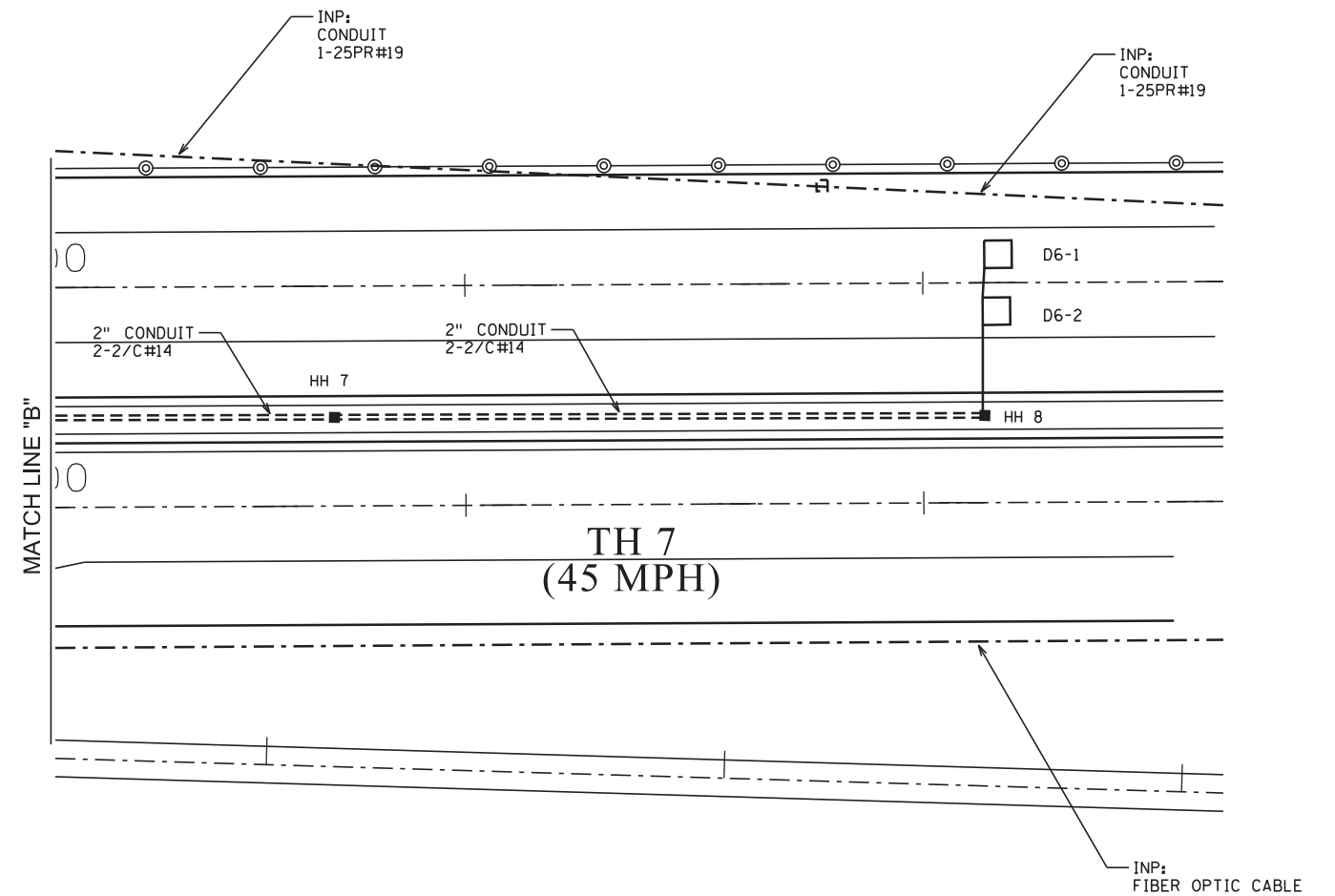
SYSTEM ID: 1734996 T.E.  
 METER ADDRESS: 4050 SHADY OAK RD  
 OLD SYSTEM ID:

**FIELD WIRING DIAGRAM 2 OF 2**  
**TH 7 AT SHADY OAK RD**  
**IN MINNETONKA, HENNEPIN COUNTY**

S.A.P. NO.	DRAWN BY:	CKD BY:	DATE:
CERTIFIED BY _____	LIC. NO. _____	DATE: _____	
STATE PROJ. NO.	(T.H.7)	SHEET NO.	4 OF 4 SHEETS







SYSTEM ID #: 20140  
 TE#: 5148  
 METER ADDRESS: 4050 SHADY OAK RD



I HEREBY CERTIFY THAT THIS PLAN WAS PREPARED BY ME OR UNDER MY DIRECT SUPERVISION AND THAT I AM A DULY LICENSED PROFESSIONAL ENGINEER UNDER THE LAWS OF THE STATE OF MINNESOTA.

*Sean Delmore*  
 SEAN DELMORE, PROFESSIONAL ENGINEER

40945 12/19/2013  
 LICENSE NO. DATE

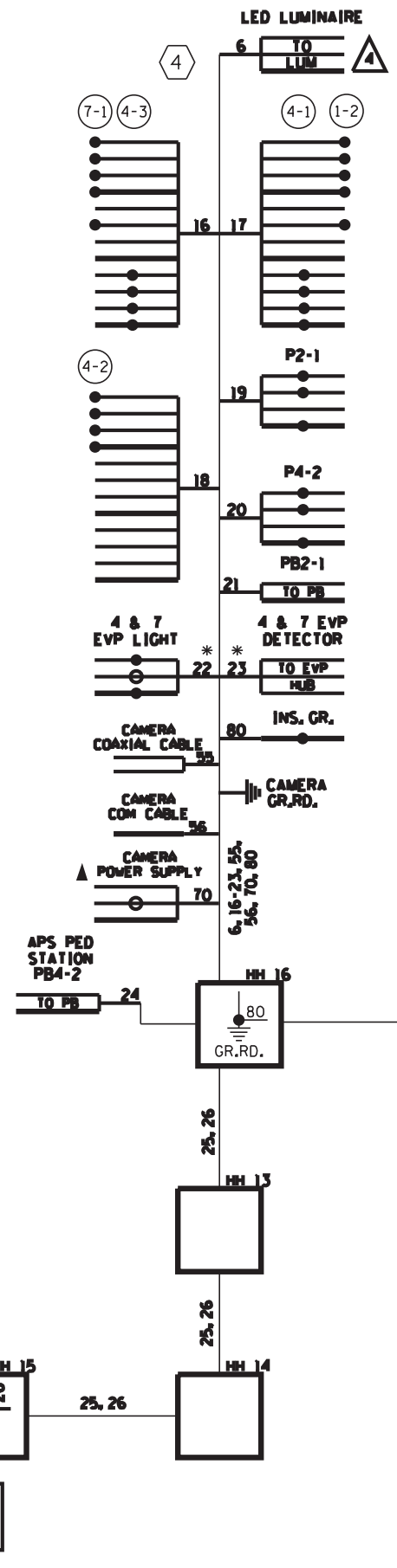
DESIGN BY: MAS  
 CAD BY: MAS  
 CHECKED BY: SDD  
 LAST REVISION:

TRAFFIC CONTROL SIGNAL SYSTEM - "C" TH 7 @ SHADY OAK RD

C.S.A.H. 61 / HENNEPIN COUNTY PROJECT 9112  
 S.P. 2706-235 (TH 7) / S.P. 027-661-046

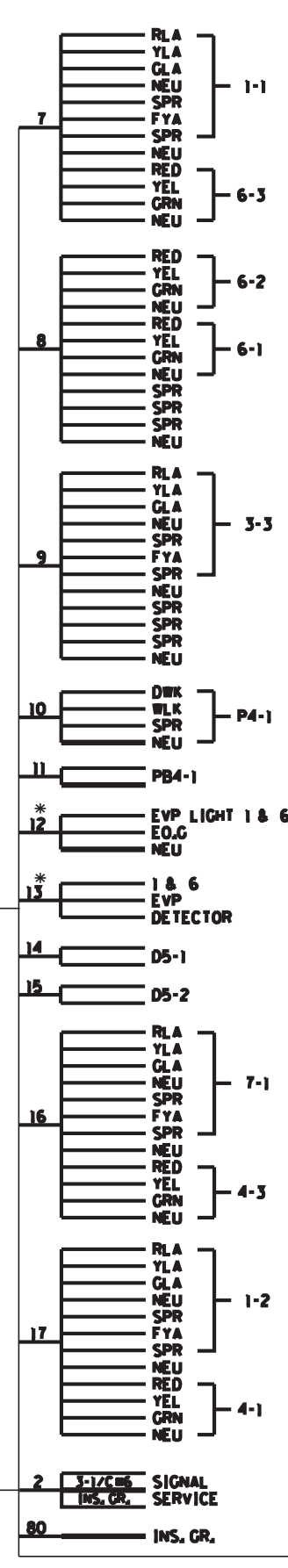
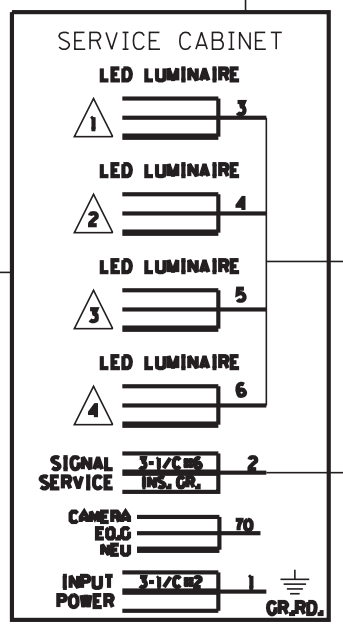
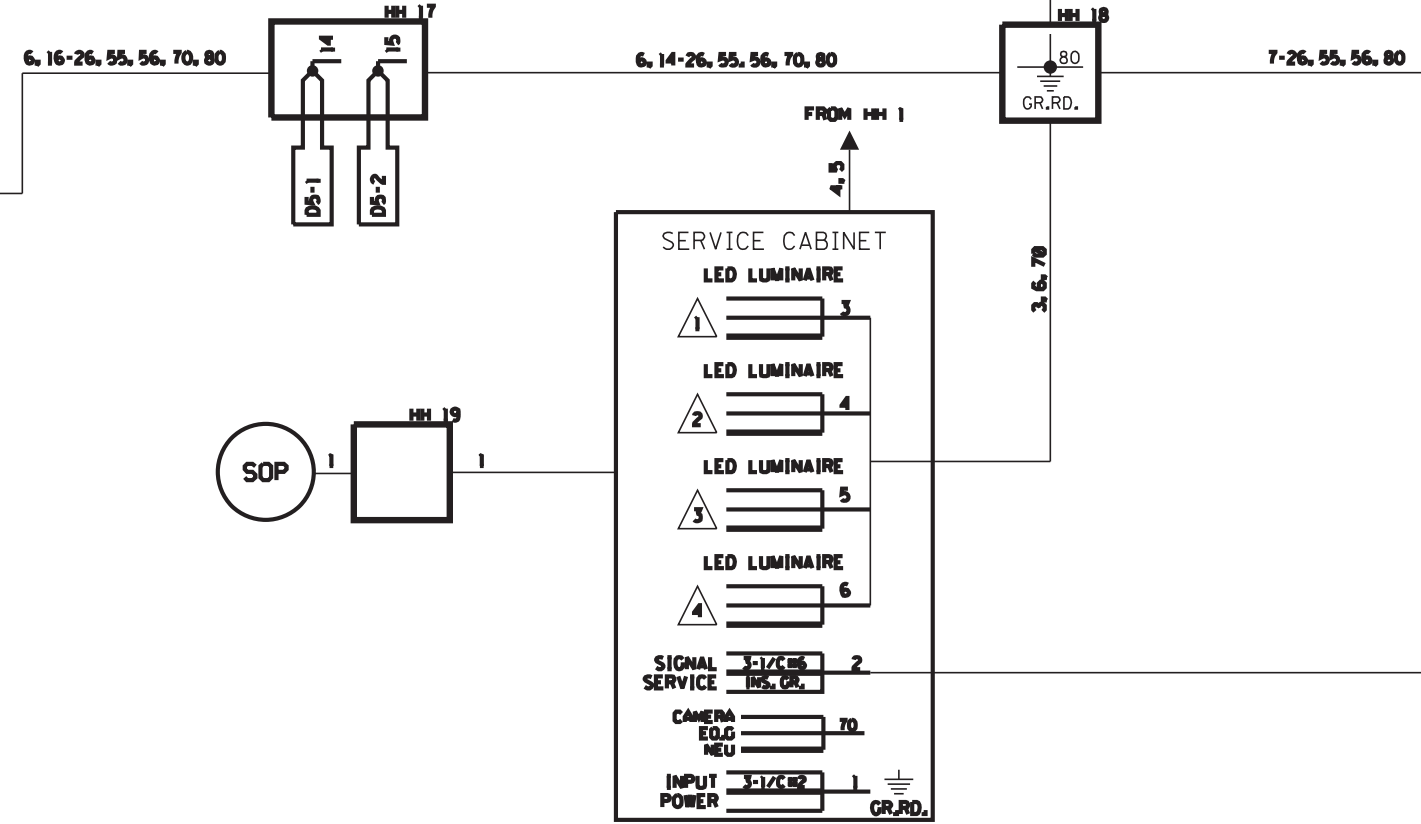
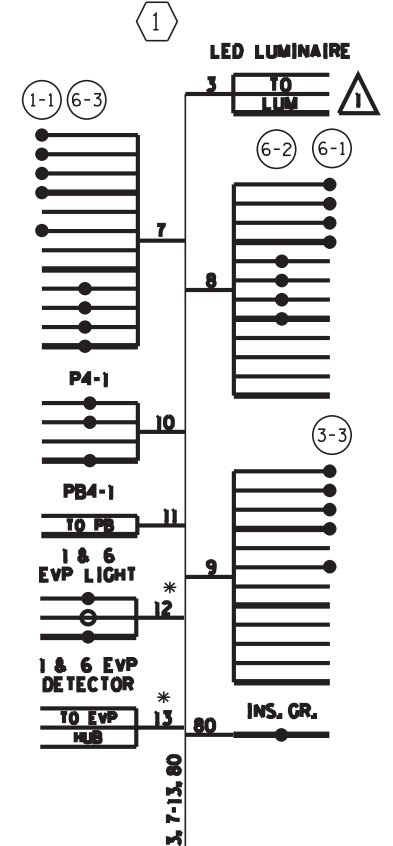
SHEET

362  
 460

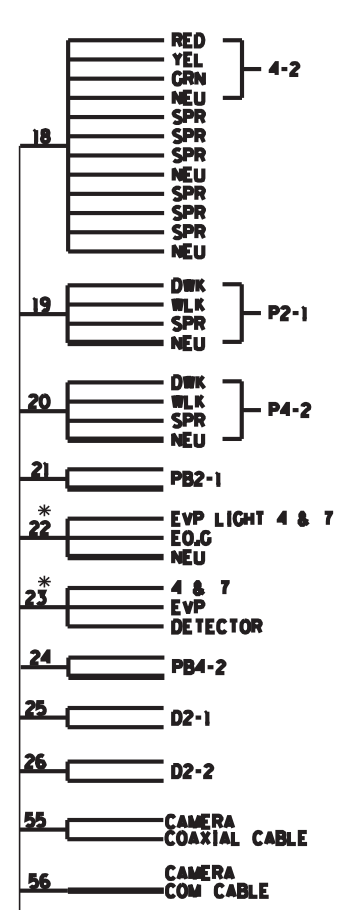


▲ DENOTES SALVAGED ITEMS FROM TH 7 AT SHADY OAK RD

- NOTES:
- LED LUMINAIRE ARE METERED.
  - SIGNAL SYSTEM (BATTERIES NOT INCLUDED) - BACKUP SERVICE CABINET.
  - FOR CONDUCTOR COLOR CODE SEE TRAFFIC SIGNAL POLE WIRING CONNECTOR DETAIL.
  - ITEMS DENOTED WITH AN ● ARE INCLUDED IN PAYMENT FOR THE EVP SYSTEM PAY ITEM.
  - ITEMS DENOTED WITH AN ○○ ARE INCLUDED IN PAYMENT FOR THE INTERCONNECT SYSTEM PAY ITEM.

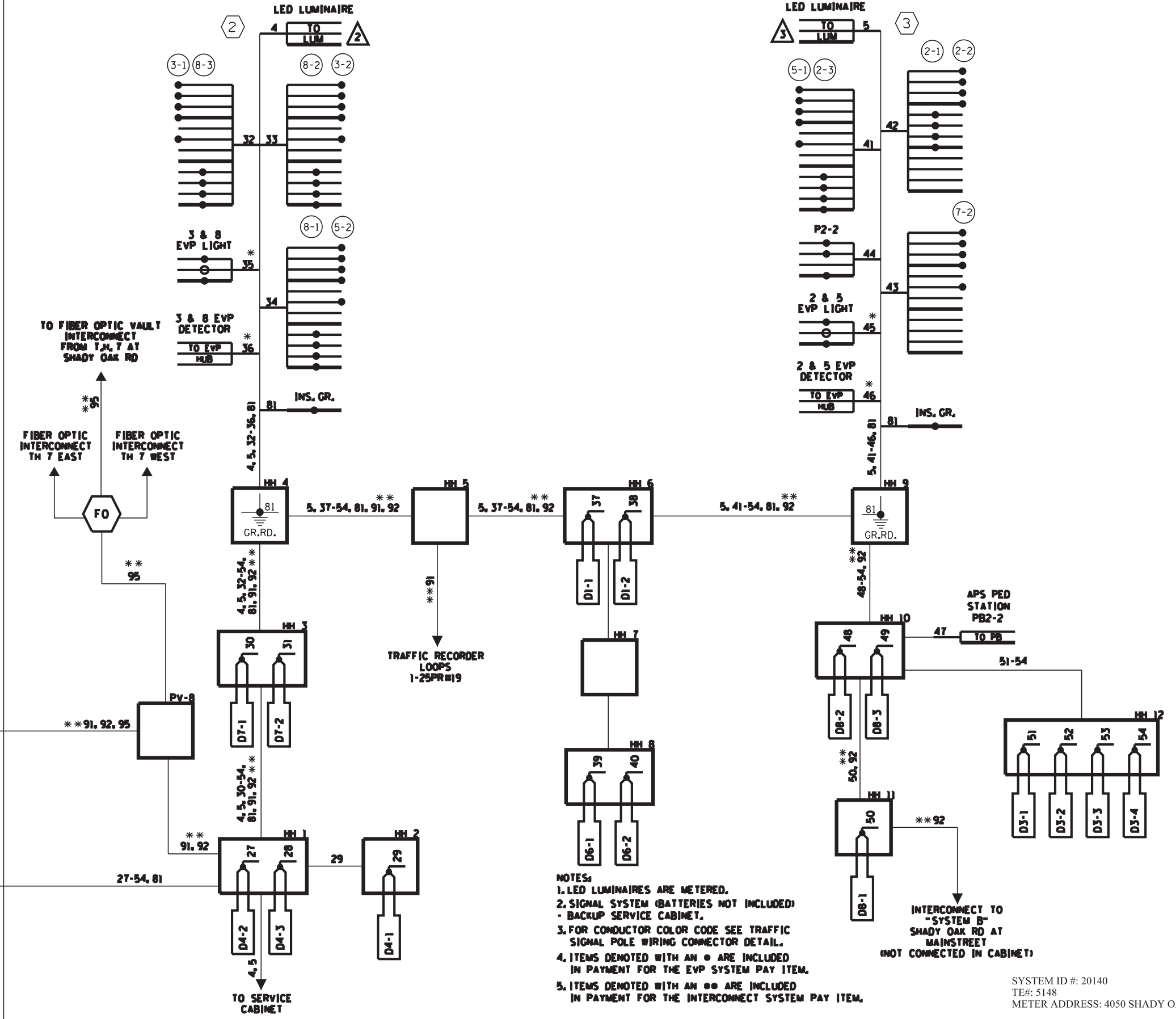
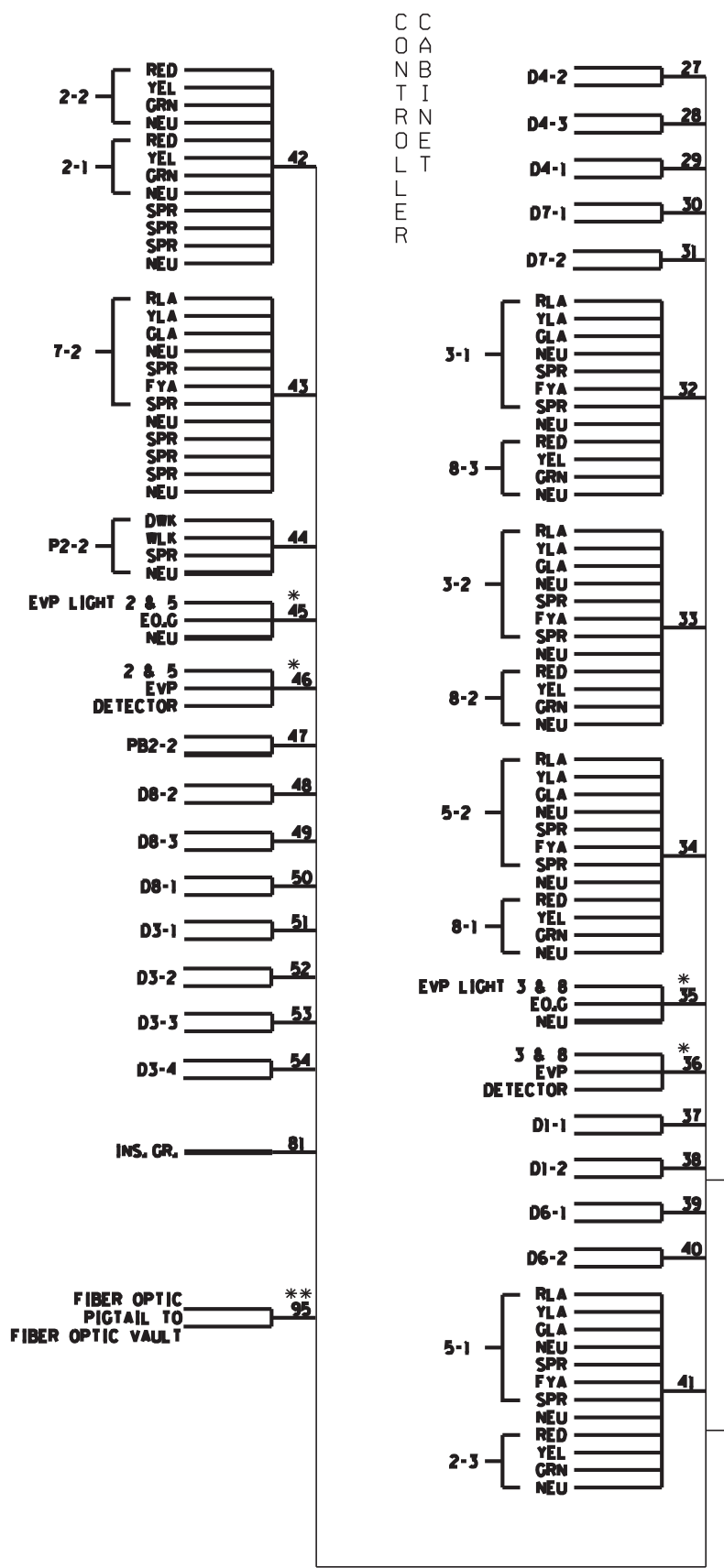


COMBINATION



SYSTEM ID #: 20140  
TE#: 5148  
METER ADDRESS: 4050 SHADY OAK RD

Date Printed: 2/19/2014      WSB Filename: K:\01538-130\Cad\Plan\1538s13l.dgn



- NOTES:
- LED LUMINAIRES ARE METERED.
  - SIGNAL SYSTEM (BATTERIES NOT INCLUDED) - BACKUP SERVICE CABINET.
  - FOR CONDUCTOR COLOR CODE SEE TRAFFIC SIGNAL POLE WIRING CONNECTOR DETAIL.
  - ITEMS DENOTED WITH AN \* ARE INCLUDED IN PAYMENT FOR THE EVP SYSTEM PAY ITEM.
  - ITEMS DENOTED WITH AN \*\* ARE INCLUDED IN PAYMENT FOR THE INTERCONNECT SYSTEM PAY ITEM.
- INTERCONNECT TO "SYSTEM B" SHADY OAK RD AT MAINSTREET (NOT CONNECTED IN CABINET)

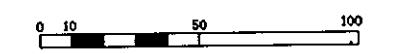
SYSTEM ID #: 20140  
TE#: 5148  
METER ADDRESS: 4050 SHADY OAK RD

	I HEREBY CERTIFY THAT THIS PLAN WAS PREPARED BY ME OR UNDER MY DIRECT SUPERVISION AND THAT I AM A DULY LICENSED PROFESSIONAL ENGINEER UNDER THE LAWS OF THE STATE OF MINNESOTA.		DESIGN BY: MAS	TRAFFIC CONTROL SIGNAL SYSTEM - "C" TH 7 @ SHADY OAK RD	SHEET 364 460
	 SEAN DELMORE, PROFESSIONAL ENGINEER		CAD BY: MAS CHECKED BY: SDD LAST REVISION:		
	40945	12/19/2013	LICENSE NO.      DATE		

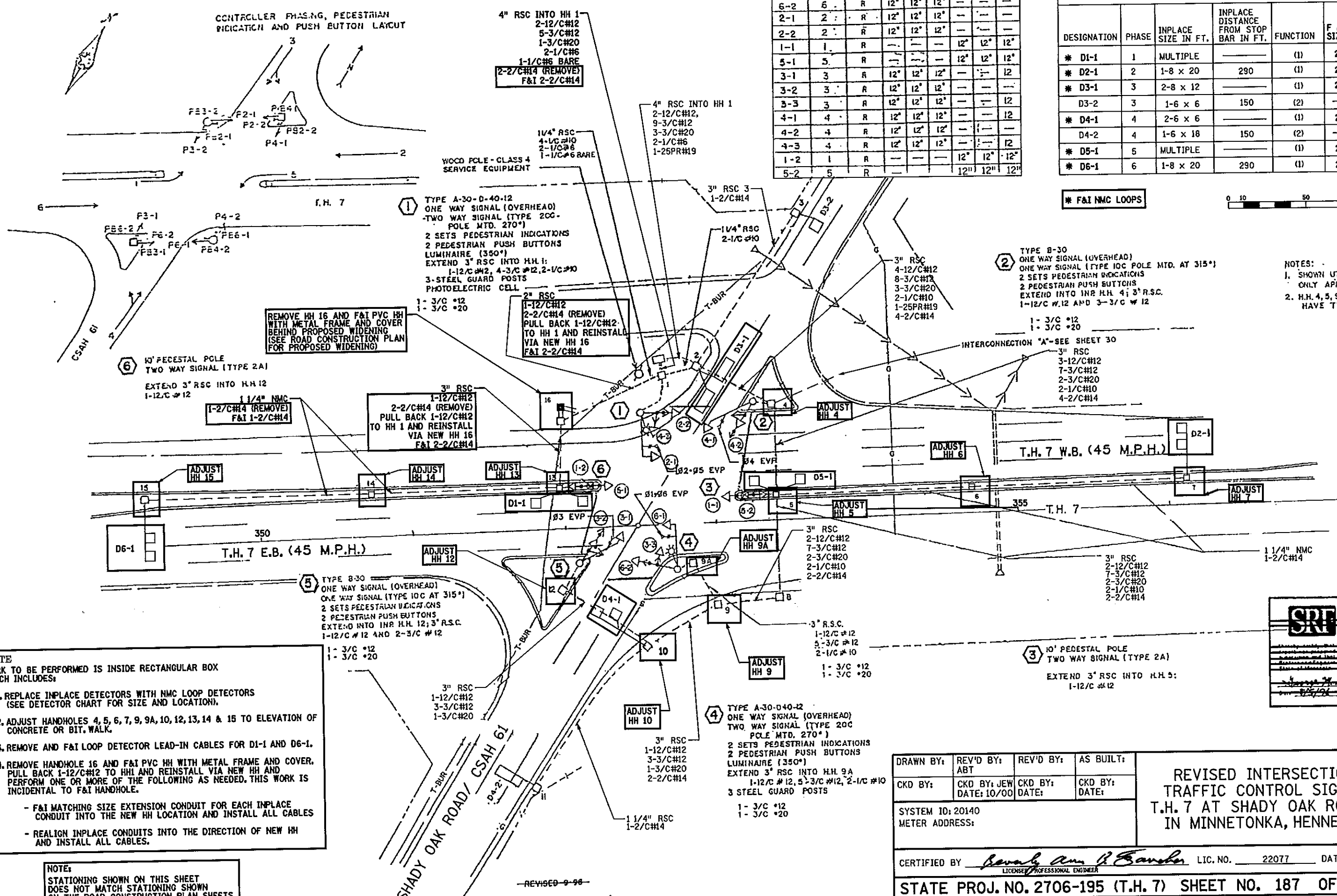


FACE	PHASE	FLASH	LOCATION SIZE					
			R	Y	G	+R	+Y	+G
6-1	E	R	12'	12'	12'			
6-2	S	R	12'	12'	12'			
2-1	2	R	12'	12'	12'			
2-2	2	R	12'	12'	12'			
1-1	1	R				12'	12'	12'
5-1	5	R				12'	12'	12'
3-1	3	R	12'	12'	12'			12'
3-2	3	R	12'	12'	12'			12'
3-3	3	R	12'	12'	12'			12'
4-1	4	R	12'	12'	12'			12'
4-2	4	R	12'	12'	12'			12'
4-3	4	R	12'	12'	12'			12'
1-2	1	R				12'	12'	12'
5-2	5	R				12'	12'	12'

DESIGNATION	PHASE	INPLACE SIZE IN FT.	DISTANCE FROM STOP BAR IN FT.	FUNCTION	F & I SIZE IN FT.	F & I DISTANCE FROM STOP BAR IN FT.
* D1-1	1	MULTIPLE		(1)	2-6 x 6	5' AND 35'
* D2-1	2	1-8 x 20	290	(1)	2-6 x 6	290
* D3-1	3	2-8 x 12		(1)	2-6 x 15	0' AND 24'
D3-2	3	1-6 x 6	150	(2)		
* D4-1	4	2-6 x 6		(1)	2-6 x 6	AS SHOWN
D4-2	4	1-6 x 18	150	(2)		
* D5-1	5	MULTIPLE		(1)	2-6 x 6	5' AND 35'
* D6-1	6	1-8 x 20	290	(1)	2-6 x 6	290



NOTES:  
 1. SHOWN UTILITIES ARE ONLY APPROXIMATE.  
 2. H.H. 4, 5, 9A, 12, 13 HAVE TYPE L.O. COVERS.



**NOTE**  
 WORK TO BE PERFORMED IS INSIDE RECTANGULAR BOX WHICH INCLUDES:

1. REPLACE INPLACE DETECTORS WITH NMC LOOP DETECTORS (SEE DETECTOR CHART FOR SIZE AND LOCATION).
2. ADJUST HANDHOLES 4, 5, 6, 7, 9, 9A, 10, 12, 13, 14 & 15 TO ELEVATION OF CONCRETE OR BIT. WALK.
3. REMOVE AND F&I LOOP DETECTOR LEAD-IN CABLES FOR D1-1 AND D6-1.
4. REMOVE HANDHOLE 16 AND F&I PVC HH WITH METAL FRAME AND COVER. PULL BACK 1-12/C#12 TO HH1 AND REINSTALL VIA NEW HH AND PERFORM ONE OR MORE OF THE FOLLOWING AS NEEDED. THIS WORK IS INCIDENTAL TO F&I HANDHOLE.
  - F&I MATCHING SIZE EXTENSION CONDUIT FOR EACH INPLACE CONDUIT INTO THE NEW HH LOCATION AND INSTALL ALL CABLES
  - REALIGN INPLACE CONDUITS INTO THE DIRECTION OF NEW HH AND INSTALL ALL CABLES.

**NOTE:**  
 STATIONING SHOWN ON THIS SHEET DOES NOT MATCH STATIONING SHOWN ON THE ROAD CONSTRUCTION PLAN SHEETS.

DRAWN BY: REVD BY: REVD BY: AS BUILT:  
 CKD BY: CKD BY: CKD BY: CKD BY:  
 DATE: 10/00 DATE: DATE: DATE:

SYSTEM ID: 20140  
 METER ADDRESS:

**REVISED INTERSECTION LAYOUT  
 TRAFFIC CONTROL SIGNAL SYSTEM  
 T.H. 7 AT SHADY OAK ROAD / CSAH 61  
 IN MINNETONKA, HENNEPIN COUNTY**

CERTIFIED BY: *Devaly Ann P. Banda* LIC. NO. 22077 DATE 2-27-01  
 LICENSED PROFESSIONAL ENGINEER

STATE PROJ. NO. 2706-195 (T.H. 7) SHEET NO. 187 OF 282 SHEETS

State Proj. No. 2706-25 (T.H. 7-12) Sheet No. 5 of 25 Sheets

