

SPECIFIC NOTES:
 (A) LIGHT BASE SHALL BE POTHOLED DUE TO POTENTIAL UTILITY CONFLICTS

EXISTING CITY FEED POINT					
NO.	STATION	L	R	LOCATION	LIGHT TYPE
F5	704+32	X		BRUNSWICK AVE	SALVAGED
F6	702+97	X		BRUNSWICK AVE	SALVAGED
F7	701+61	X		BRUNSWICK AVE	SALVAGED

FEED POINT J3B					
NO.	STATION	L	R	LOCATION	LIGHT TYPE
8	1009+54		X	E.B. T.H. 7	9-40
9	1011+98		X	E.B. T.H. 7	9-40
12	1011+12	X		W.B. T.H. 7	9-40
13	1008+54	X		W.B. T.H. 7	9-40
14	1005+98	X		W.B. T.H. 7	9-40

PROPOSED CITY FEED POINT					
NO.	STATION	L	R	LOCATION	LIGHT TYPE
B7	605+43		X	EB7WOOD	SPECIAL 1
B8	603+89		X	EB7WOOD	SPECIAL 1
B9	602+30		X	EB7WOOD	SPECIAL 1
B10	600+82		X	EB7WOOD	SPECIAL 1

- GENERAL NOTES:**
- ALL CONDUIT SHALL BE 2" NMC (UNLESS OTHERWISE NOTED)
 - ALL DISTRIBUTION CABLE SHALL BE 3-1/C #4 WITH 1-1/C #4 GROUND (UNLESS OTHERWISE NOTED)
 - DIRECT BURRIED CABLE SHALL BE ARMORED CABLE 4-1/C #4 CONDUCTORS
 - ALL DIRECT BURRIED CABLE PASSING UNDER A ROADWAY SHALL UTILIZE A 3" NMC SLEEVE THAT SHALL BE INSTALLED PERPENDICULAR TO THE ROADWAY
 - OFFSET OF CITY LIGHT BASE SHALL BE 2' FROM BACK OF CURB TO CENTER OF LIGHT BASE (UNLESS OTHERWISE NOTED)
 - ALL ELECTRICAL EQUIPMENT SHALL BE STAKED AND VERIFIED BY FIELD ENGINEER

MATCHLINE STA. 1012+70.00
SEE SHEET NO. 143

3:41:49 PM 6/17/2009 ...\\6048\h\l-mu\p\lan\6048_1101.dgn

NO.	DATE	BY	CHKD	APPR	REVISION

I hereby certify that this plan, specification, or report was prepared by me or under my direct supervision and that I am a duly Licensed Professional Engineer under the laws of the State of Minnesota.
 Print Name: **Brian D. Holt**
 Date: **6-22-09** License #: **21428**

STATE PROJECT NO. 2706-222
 S.P. 163-280-20
 CITY PROJECT NO. 2004-1700

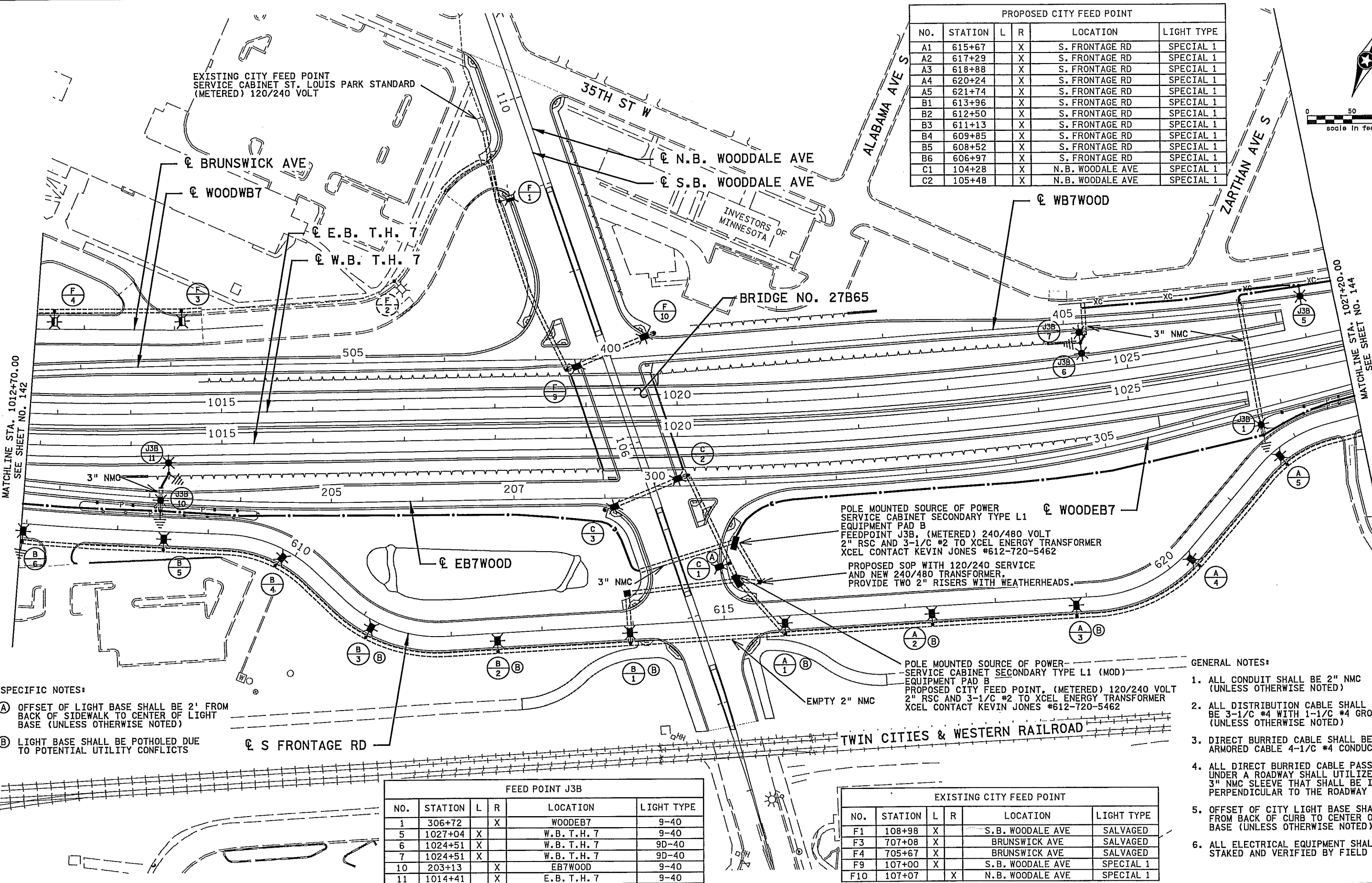
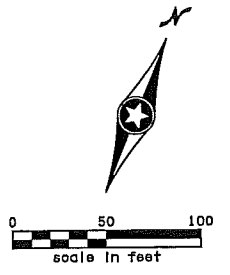
DRAWN BY J. KRUSE
 DESIGNED BY J. KRUSE
 CHECKED BY B. HOLT
 COMM. NO. 6048



CITY OF ST. LOUIS PARK
 LIGHTING PLANS
 T.H. 7 / WOODDALE AVENUE
 S.P. 2706-222 (T.H. 7)

SHEET 142 OF 213

PROPOSED CITY FEED POINT					
NO.	STATION	L	R	LOCATION	LIGHT TYPE
A1	615+67	X		S. FRONTAGE RD	SPECIAL 1
A2	617+29	X		S. FRONTAGE RD	SPECIAL 1
A3	618+88	X		S. FRONTAGE RD	SPECIAL 1
A4	620+24	X		S. FRONTAGE RD	SPECIAL 1
A5	621+74	X		S. FRONTAGE RD	SPECIAL 1
B1	613+96	X		S. FRONTAGE RD	SPECIAL 1
B2	612+50	X		S. FRONTAGE RD	SPECIAL 1
B3	611+13	X		S. FRONTAGE RD	SPECIAL 1
B4	609+85	X		S. FRONTAGE RD	SPECIAL 1
B5	608+52	X		S. FRONTAGE RD	SPECIAL 1
B6	606+97	X		S. FRONTAGE RD	SPECIAL 1
C1	104+28	X		N.B. WOODDALE AVE	SPECIAL 1
C2	105+48	X		N.B. WOODDALE AVE	SPECIAL 1



POLE MOUNTED SOURCE OF POWER
 SERVICE CABINET SECONDARY TYPE L1
 EQUIPMENT PAD B
 FEEDPOINT J3B, (METERED) 240/480 VOLT
 2" RSC AND 3-1/2" #2 TO XCEL ENERGY TRANSFORMER
 XCEL CONTACT KEVIN JONES #612-720-5462
 PROPOSED SOP WITH 120/240 SERVICE
 AND NEW 240/480 TRANSFORMER.
 PROVIDE TWO 2" RISERS WITH WEATHERHEADS.

POLE MOUNTED SOURCE OF POWER—
 SERVICE CABINET SECONDARY TYPE L1 (MOD)
 EQUIPMENT PAD B
 PROPOSED CITY FEED POINT, (METERED) 120/240 VOLT
 2" RSC AND 3-1/2" #2 TO XCEL ENERGY TRANSFORMER
 XCEL CONTACT KEVIN JONES #612-720-5462

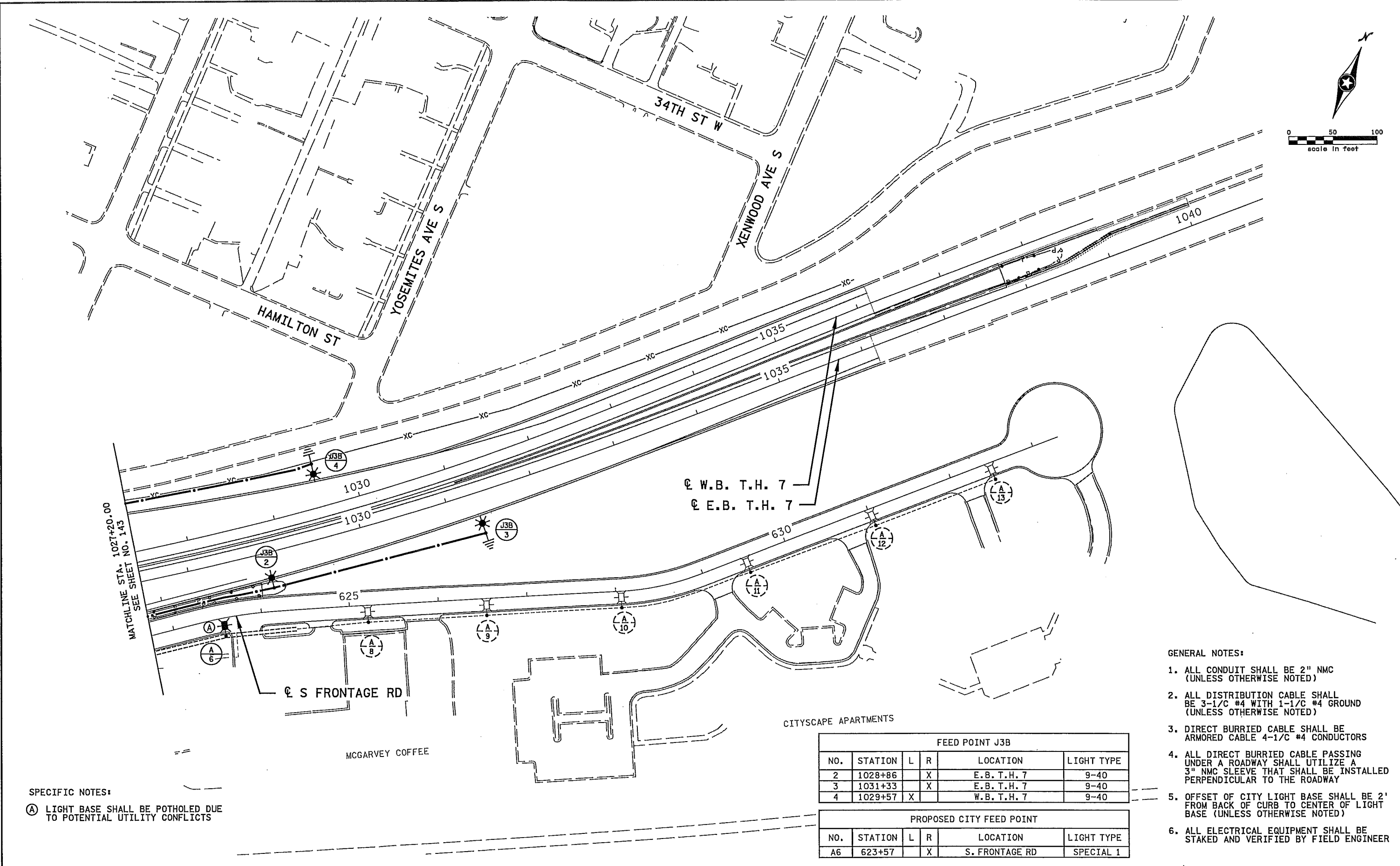
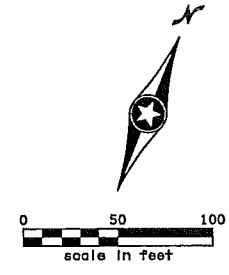
- GENERAL NOTES:
1. ALL CONDUIT SHALL BE 2" NMC (UNLESS OTHERWISE NOTED)
 2. ALL DISTRIBUTION CABLE SHALL BE 3-1/2" #4 WITH 1-1/2" #4 GROUND (UNLESS OTHERWISE NOTED)
 3. DIRECT BURRIED CABLE SHALL BE ARMORED CABLE 4-1/2" #4 CONDUCTORS
 4. ALL DIRECT BURRIED CABLE PASSING UNDER A ROADWAY SHALL UTILIZE A 3" NMC SLEEVE THAT SHALL BE INSTALLED PERPENDICULAR TO THE ROADWAY
 5. OFFSET OF CITY LIGHT BASE SHALL BE 2' FROM BACK OF CURB TO CENTER OF LIGHT BASE (UNLESS OTHERWISE NOTED)
 6. ALL ELECTRICAL EQUIPMENT SHALL BE STAKED AND VERIFIED BY FIELD ENGINEER

- SPECIFIC NOTES:
- (A) OFFSET OF LIGHT BASE SHALL BE 2' FROM BACK OF SIDEWALK TO CENTER OF LIGHT BASE (UNLESS OTHERWISE NOTED)
 - (B) LIGHT BASE SHALL BE POTHOLED DUE TO POTENTIAL UTILITY CONFLICTS

FEED POINT J3B					
NO.	STATION	L	R	LOCATION	LIGHT TYPE
1	306+72		X	WOODEB7	9-40
5	1027+04	X		W.B. T.H. 7	9-40
6	1024+51	X		W.B. T.H. 7	9D-40
7	1024+51	X		W.B. T.H. 7	9D-40
10	203+13		X	EB7WOOD	9-40
11	1014+41		X	E.B. T.H. 7	9-40

EXISTING CITY FEED POINT					
NO.	STATION	L	R	LOCATION	LIGHT TYPE
F1	108+98	X		S.B. WOODDALE AVE	SALVAGED
F3	707+08	X		BRUNSWICK AVE	SALVAGED
F4	705+67	X		BRUNSWICK AVE	SALVAGED
F9	107+00	X		S.B. WOODDALE AVE	SPECIAL 1
F10	107+07	X		N.B. WOODDALE AVE	SPECIAL 1

NO. DATE BY CKD APPR REVISION	I hereby certify that this plan, specification, or report was prepared by me or under my direct supervision and that I am a duly Licensed Professional Engineer under the laws of the State of Minnesota. Pr Int: Brian D. Holt Date: 6-22-09 License #: 21428	STATE PROJECT NO. 2706-222 S.P. 163-280-20 CITY PROJECT NO. 2004-1700	DRAWN BY J. KRUSE DESIGNED BY J. KRUSE CHECKED BY B. HOLT COMM. NO. 6048	SRF CONSULTING GROUP, INC.	CITY OF ST. LOUIS PARK LIGHTING PLANS T.H. 7 / WOODDALE AVENUE S.P. 2706-222 (T.H. 7)	SHEET 143 OF 213
	3:41:51 PM 6/17/2009 ...\\6048\h1-mu\p\an\6048-1102.dgn					



SPECIFIC NOTES:
 (A) LIGHT BASE SHALL BE POTHOLED DUE TO POTENTIAL UTILITY CONFLICTS

- GENERAL NOTES:**
- ALL CONDUIT SHALL BE 2" NMC (UNLESS OTHERWISE NOTED)
 - ALL DISTRIBUTION CABLE SHALL BE 3-1/C #4 WITH 1-1/C #4 GROUND (UNLESS OTHERWISE NOTED)
 - DIRECT BURRIED CABLE SHALL BE ARMORED CABLE 4-1/C #4 CONDUCTORS
 - ALL DIRECT BURRIED CABLE PASSING UNDER A ROADWAY SHALL UTILIZE A 3" NMC SLEEVE THAT SHALL BE INSTALLED PERPENDICULAR TO THE ROADWAY
 - OFFSET OF CITY LIGHT BASE SHALL BE 2' FROM BACK OF CURB TO CENTER OF LIGHT BASE (UNLESS OTHERWISE NOTED)
 - ALL ELECTRICAL EQUIPMENT SHALL BE STAKED AND VERIFIED BY FIELD ENGINEER

FEED POINT J3B					
NO.	STATION	L	R	LOCATION	LIGHT TYPE
2	1028+86		X	E.B. T.H. 7	9-40
3	1031+33		X	E.B. T.H. 7	9-40
4	1029+57	X		W.B. T.H. 7	9-40

PROPOSED CITY FEED POINT					
NO.	STATION	L	R	LOCATION	LIGHT TYPE
A6	623+57		X	S. FRONTAGE RD	SPECIAL 1

3:41:53 PM 6/17/2009 R:\proj\ecrs\6048\1-m\p\an\6048-1103.dgn

NO.	DATE	BY	CHKD	APPR	REVISION

I hereby certify that this plan, specification, or report was prepared by me or under my direct supervision and that I am a duly Licensed Professional Engineer under the laws of the State of Minnesota.
 Print Name: **BRIAN D. HOLT**
Brian D Holt
 Date: 6-22-09 License #: 21428

STATE PROJECT NO. 2706-222
 S.P. 163-280-20
 CITY PROJECT NO. 2004-1700
 DRAWN BY J. KRUSE
 DESIGNED BY J. KRUSE
 CHECKED BY B. HOLT
 COMM. NO. 6048



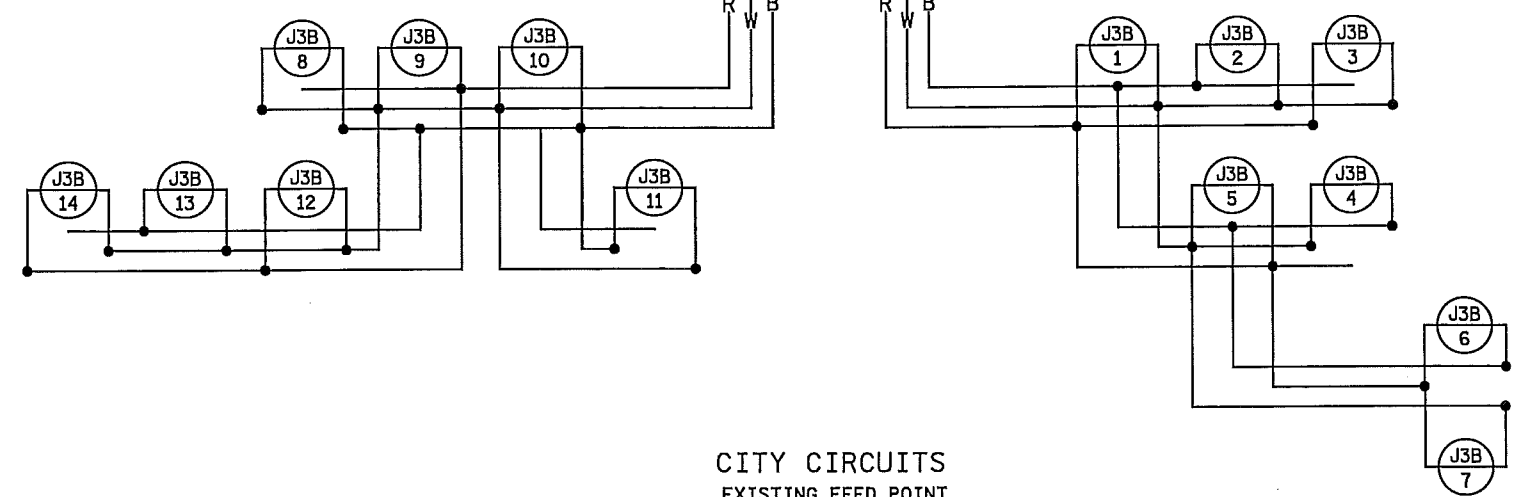
CITY OF ST. LOUIS PARK
 LIGHTING PLANS
 T.H. 7 / WOODDALE AVENUE
 S.P. 2706-222 (T.H. 7)

SHEET 144 OF 213

MNDOT CIRCUITS
FEED POINT "J3B"
240/480 VOLT

F&I 2-2 POLE
CIRCUIT BREAKERS
20A 20A

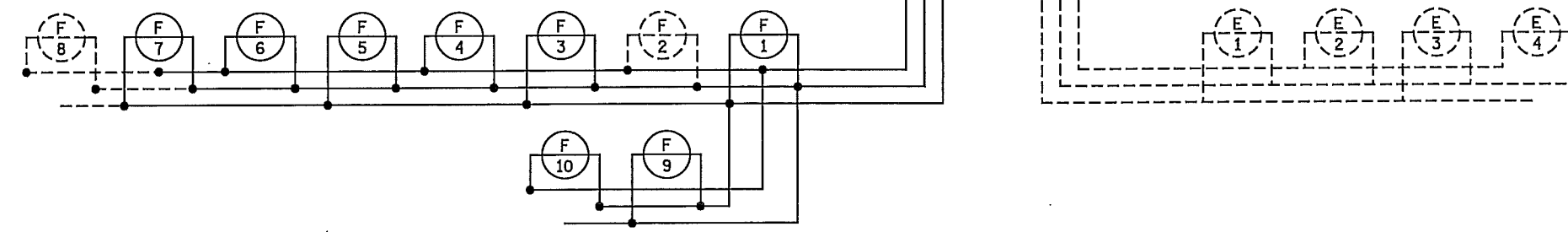
B AND R DENOTE CURRENT CARRYING CONDUCTORS
W DENOTES NEUTRAL CONDUCTOR
GROUND NOT SHOWN



CITY CIRCUITS
EXISTING FEED POINT
120/240 VOLT

F&I 1-2 POLE
CIRCUIT BREAKERS
20A

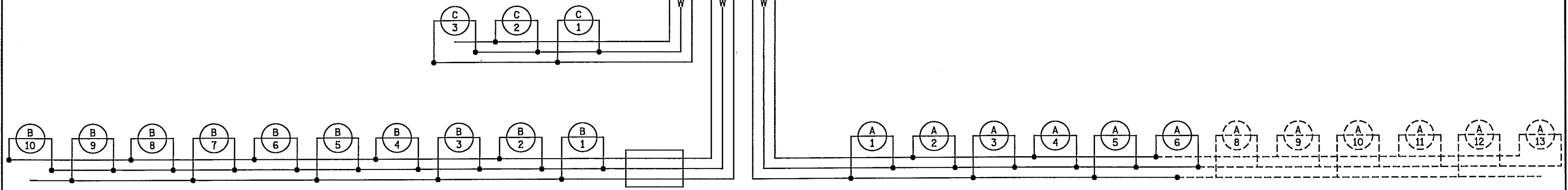
B AND R DENOTE CURRENT CARRYING CONDUCTORS
W DENOTES NEUTRAL CONDUCTOR
GROUND NOT SHOWN



CITY CIRCUITS
NEW CITY FEED POINT
120/240 VOLT

F&I 3-2 POLE
CIRCUIT BREAKERS
20A 20A 20A

B AND R DENOTE CURRENT CARRYING CONDUCTORS
W DENOTES NEUTRAL CONDUCTOR
GROUND NOT SHOWN



3:41:54 PM 6/17/2009 n:\p\proj\6048\h1-m\p1an\6048_1104.dgn

NO	DATE	BY	CHKD	APPR	REVISION

I hereby certify that this plan, specification, or report was prepared by me or under my direct supervision and that I am a duly Licensed Professional Engineer under the laws of the State of Minnesota.
Print Name: **Brian D. Holt**
Date: 6-22-09 License #: 21428

STATE PROJECT NO. 2706-222
S.P. 163-280-20
CITY PROJECT NO. 2004-1700

DRAWN BY J. KRUSE
DESIGNED BY J. KRUSE
CHECKED BY B. HOLT
COMM. NO. 6048



CITY OF ST. LOUIS PARK
LIGHTING PLANS
T.H. 7 / WOODDALE AVENUE
S.P. 2706-222 (T.H. 7)

SHEET 145 OF 213